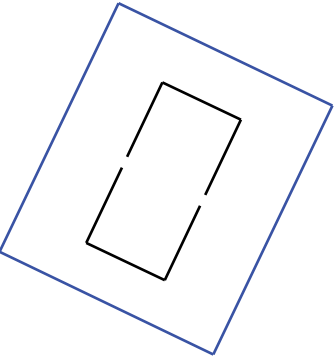
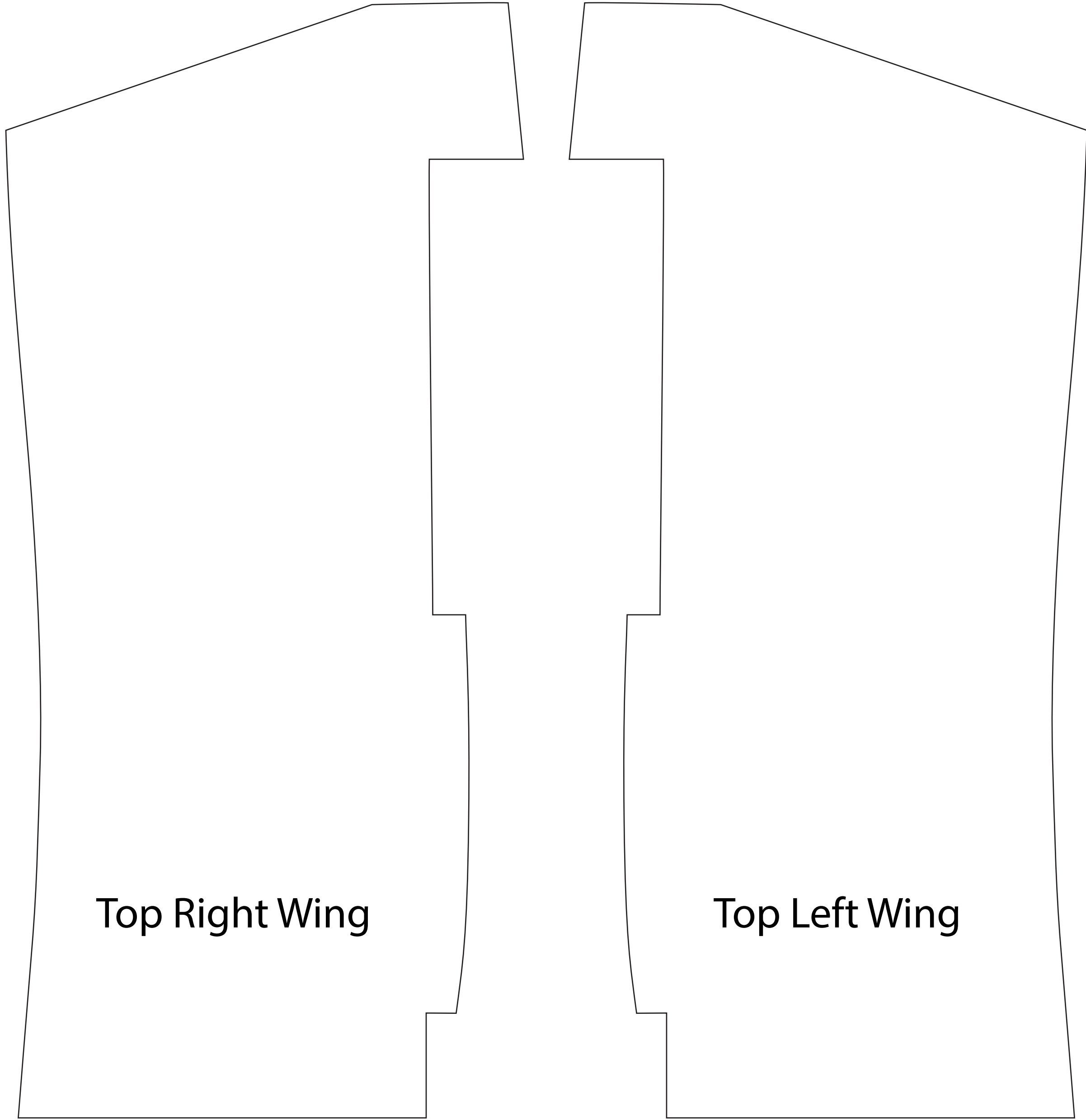


Top Right Wing

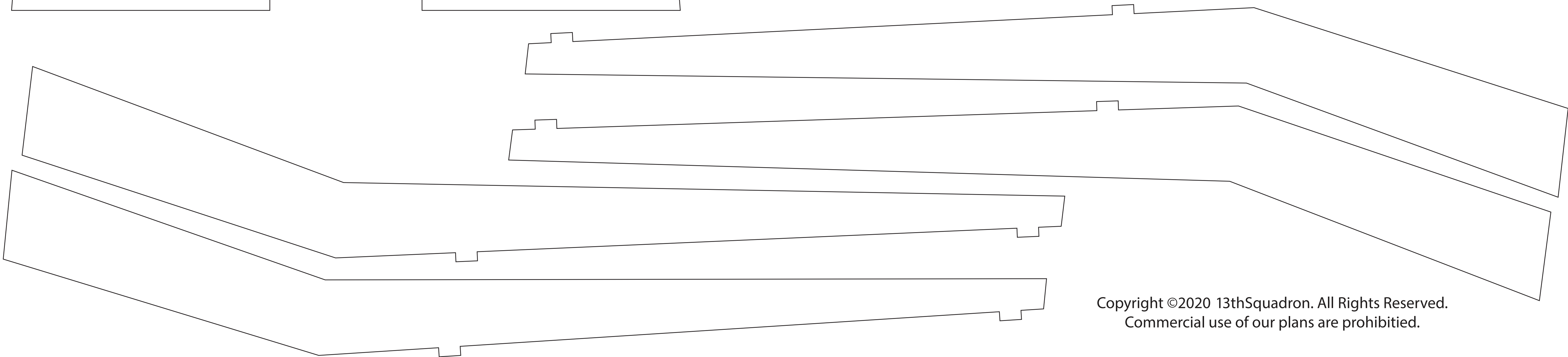
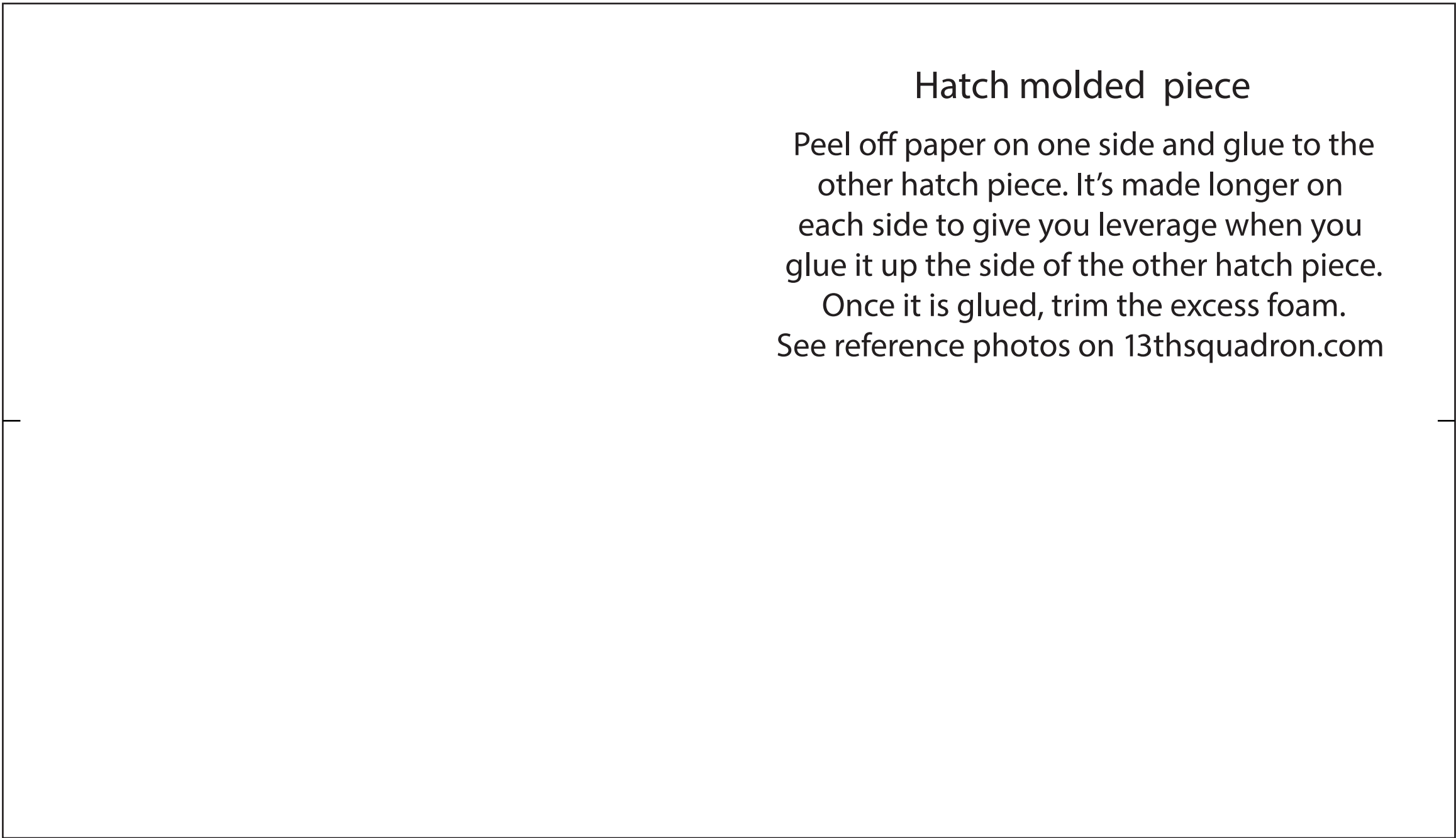
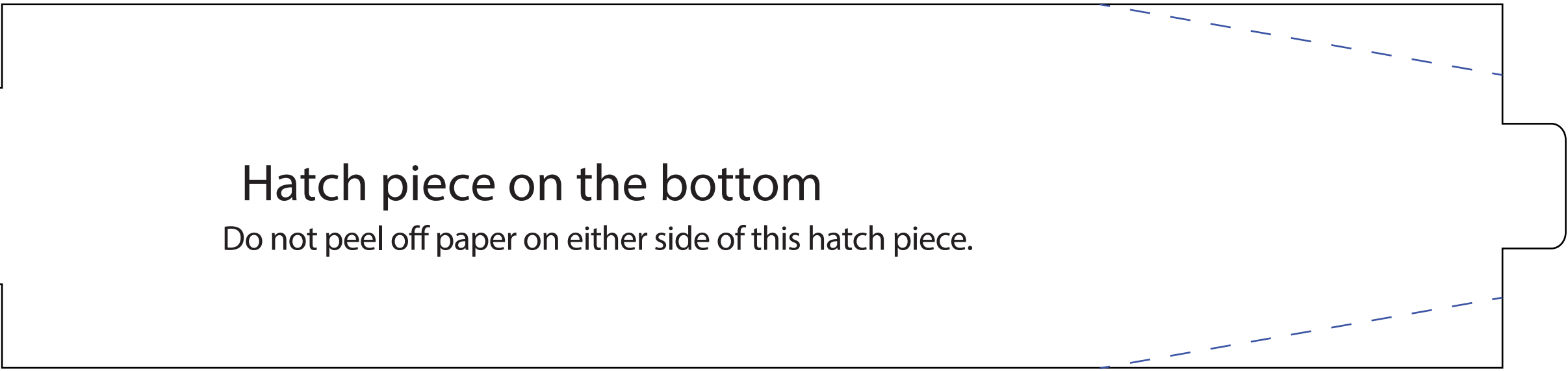
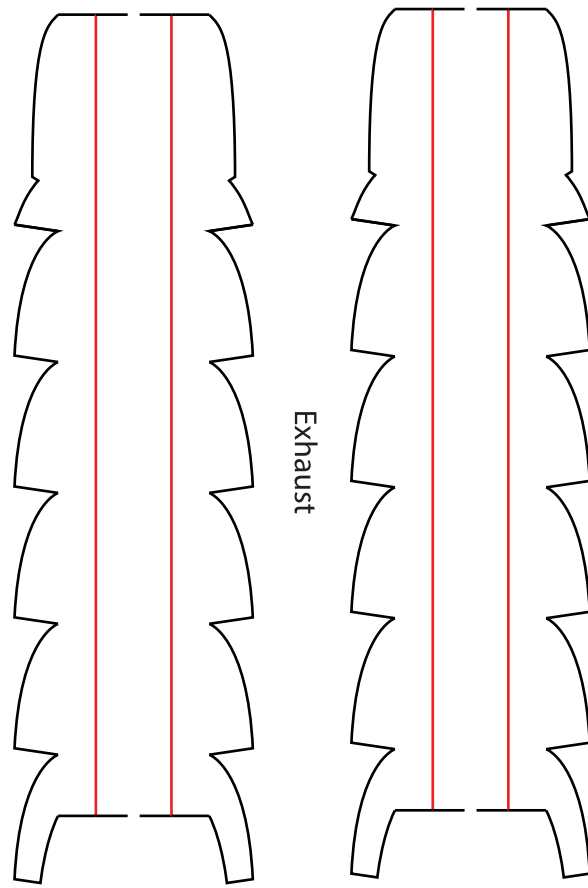
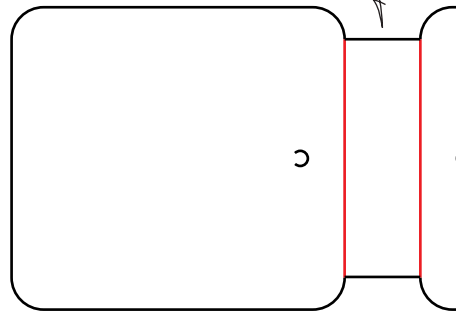
Bottom Right Wing

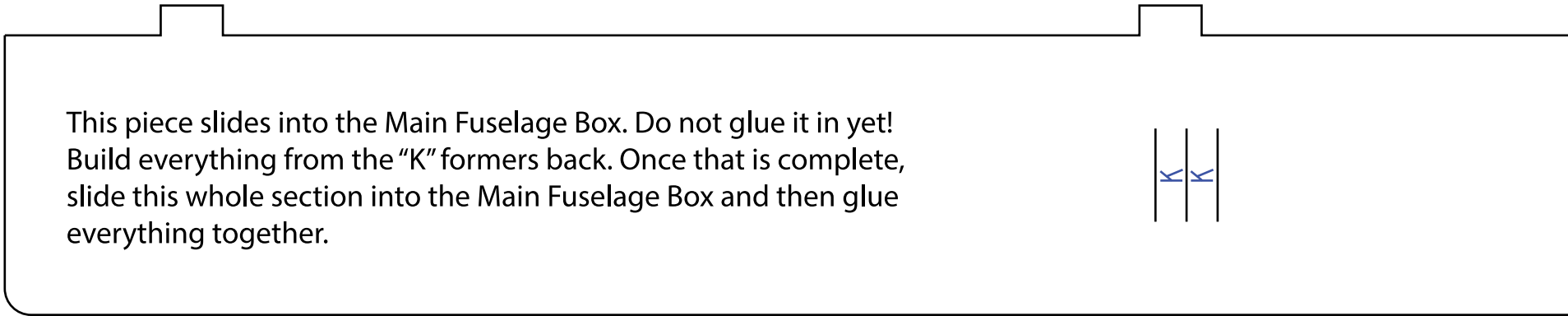
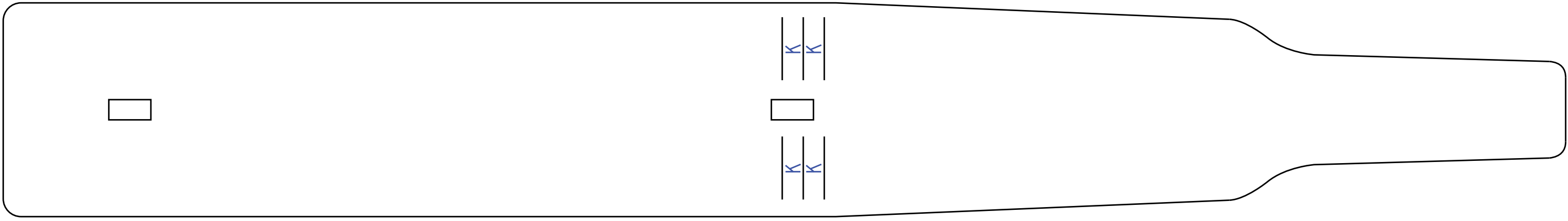
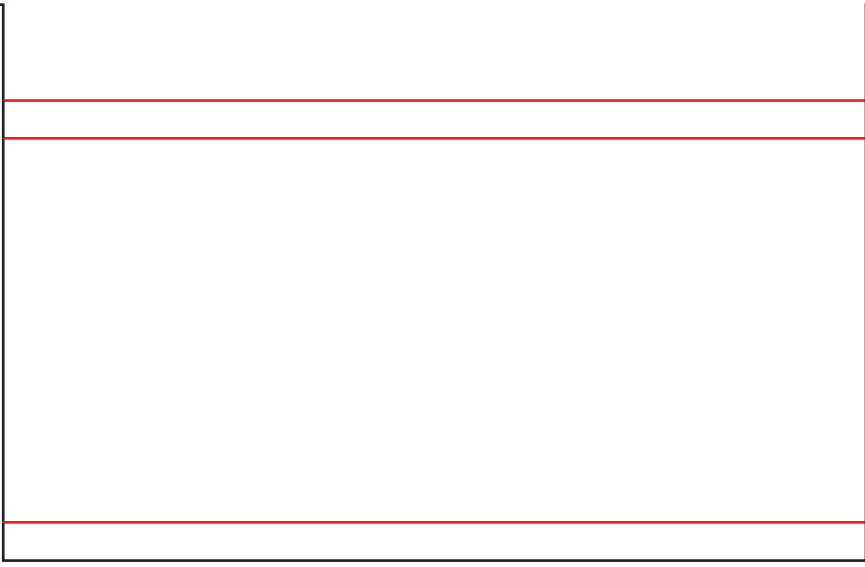
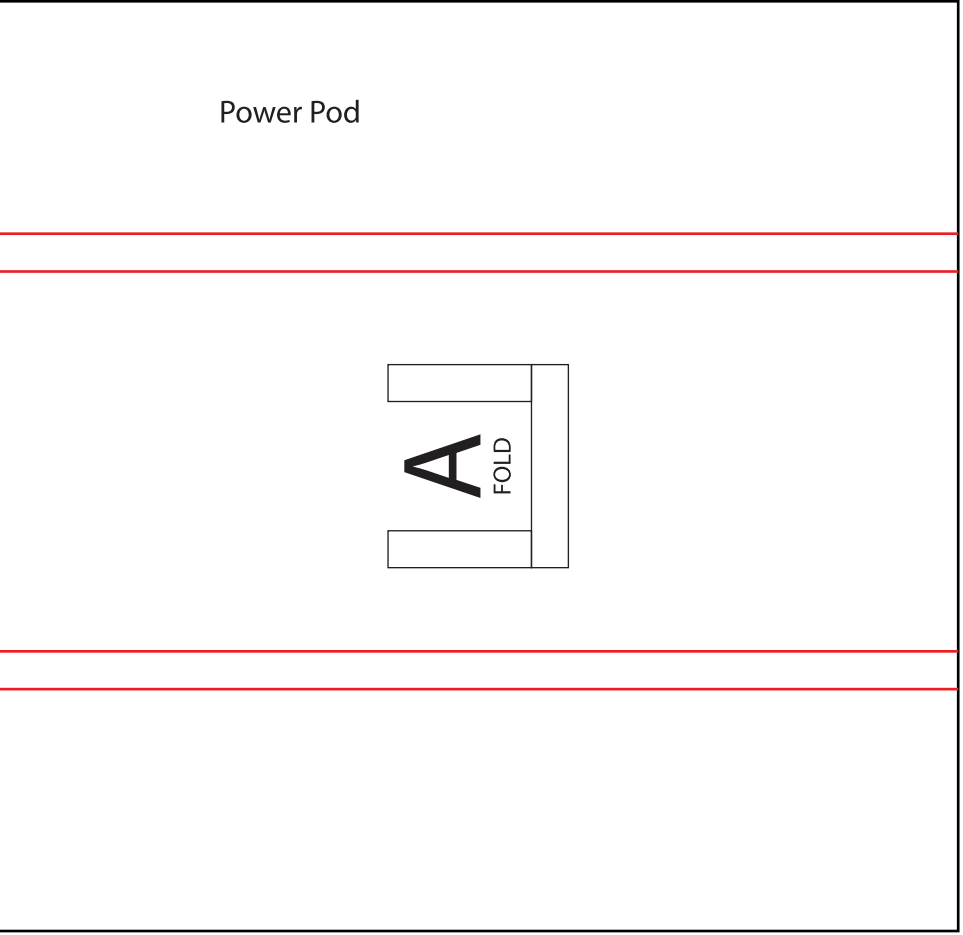
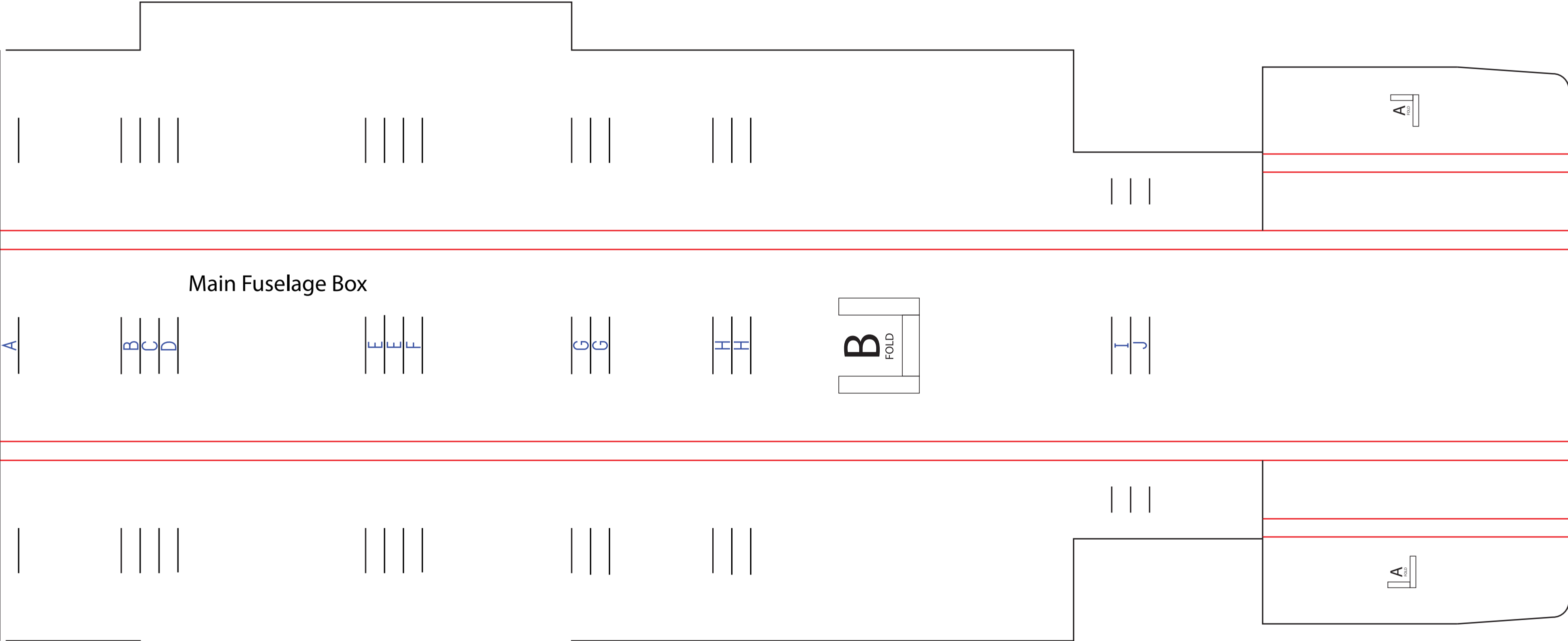
Landing gear
hole.





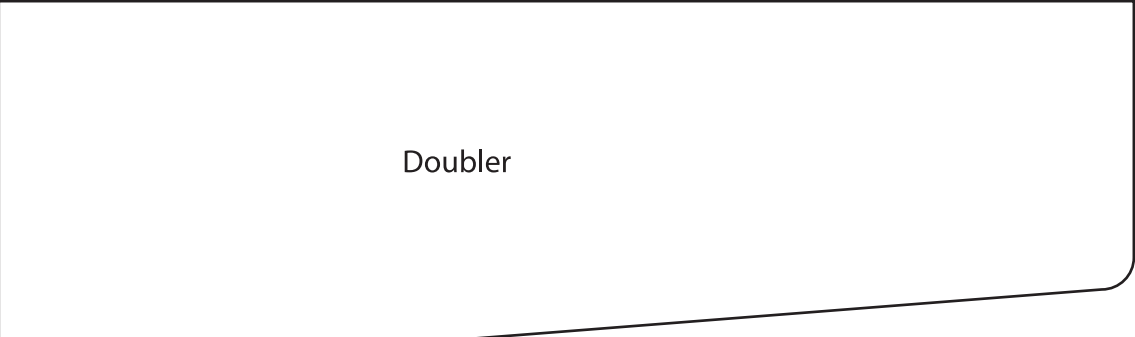
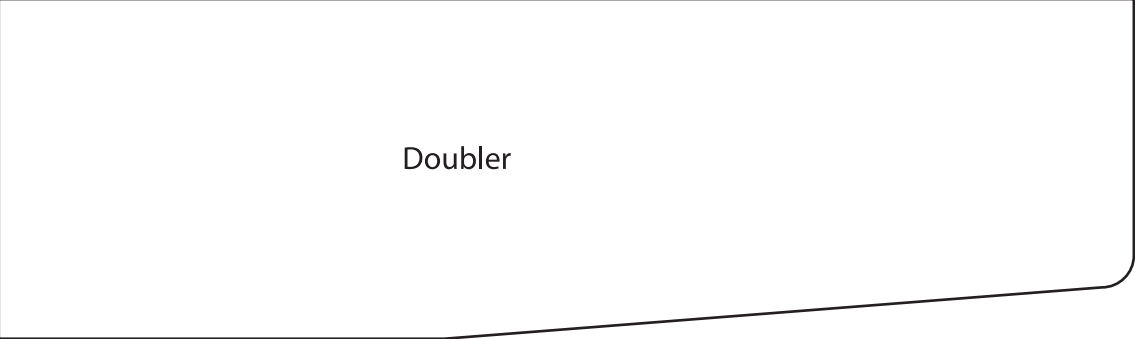
"C" fold here. Cut out the foam, leave the paper, fold over and glue.



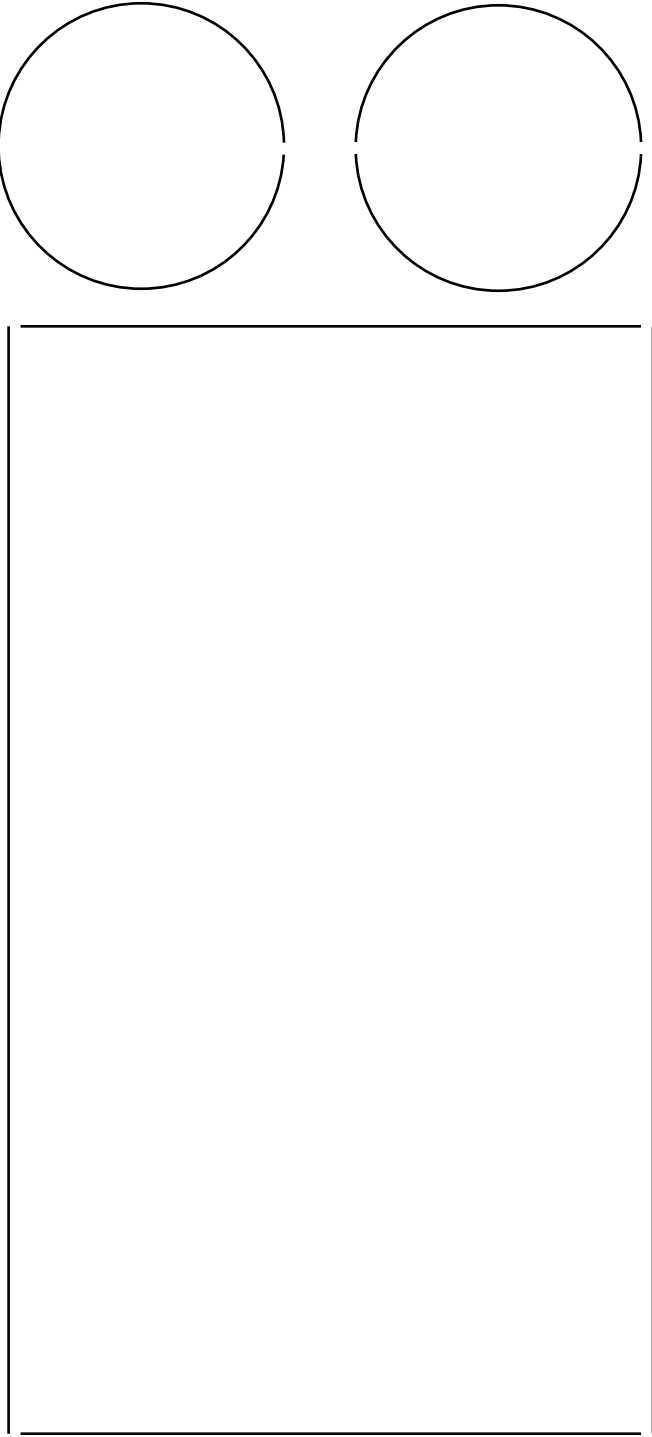
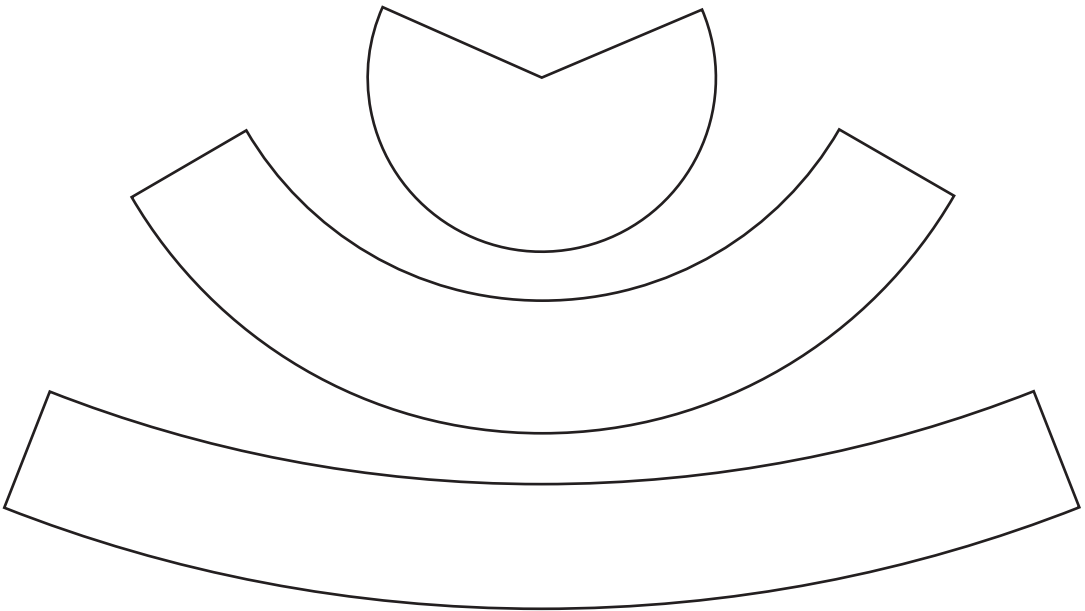
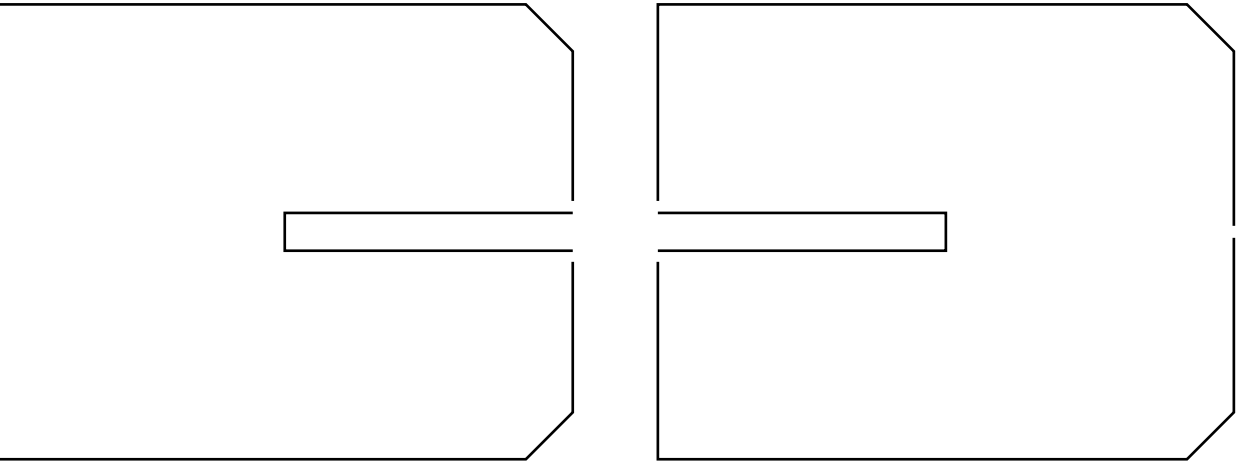
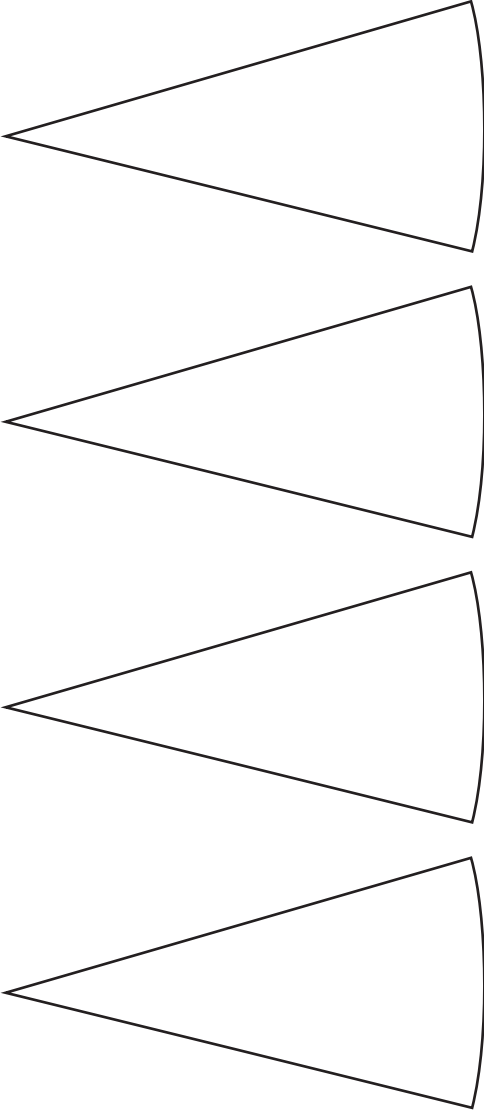
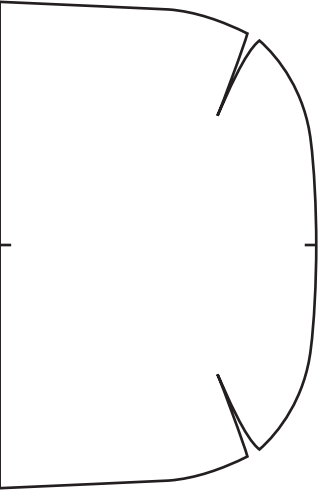
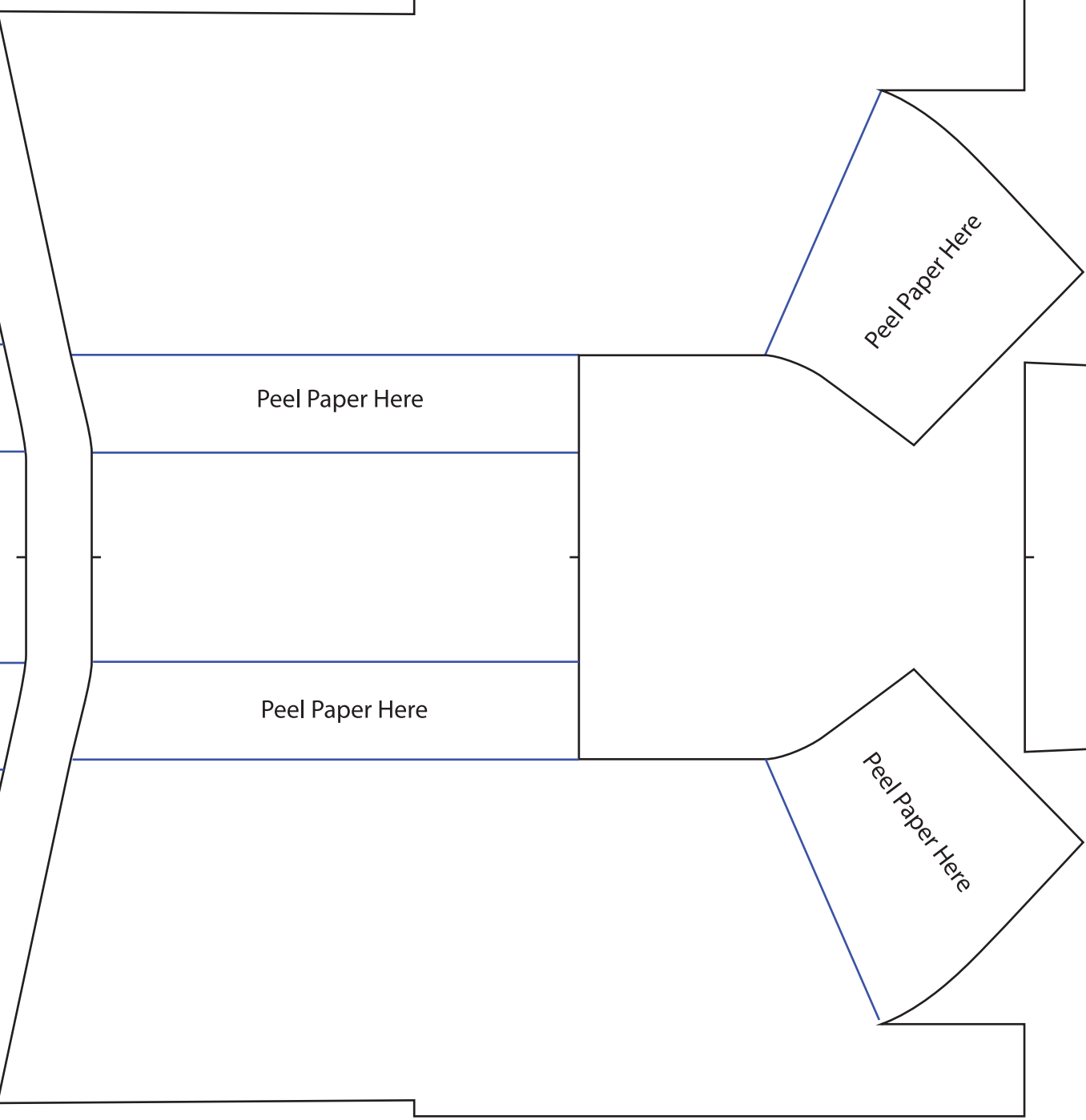
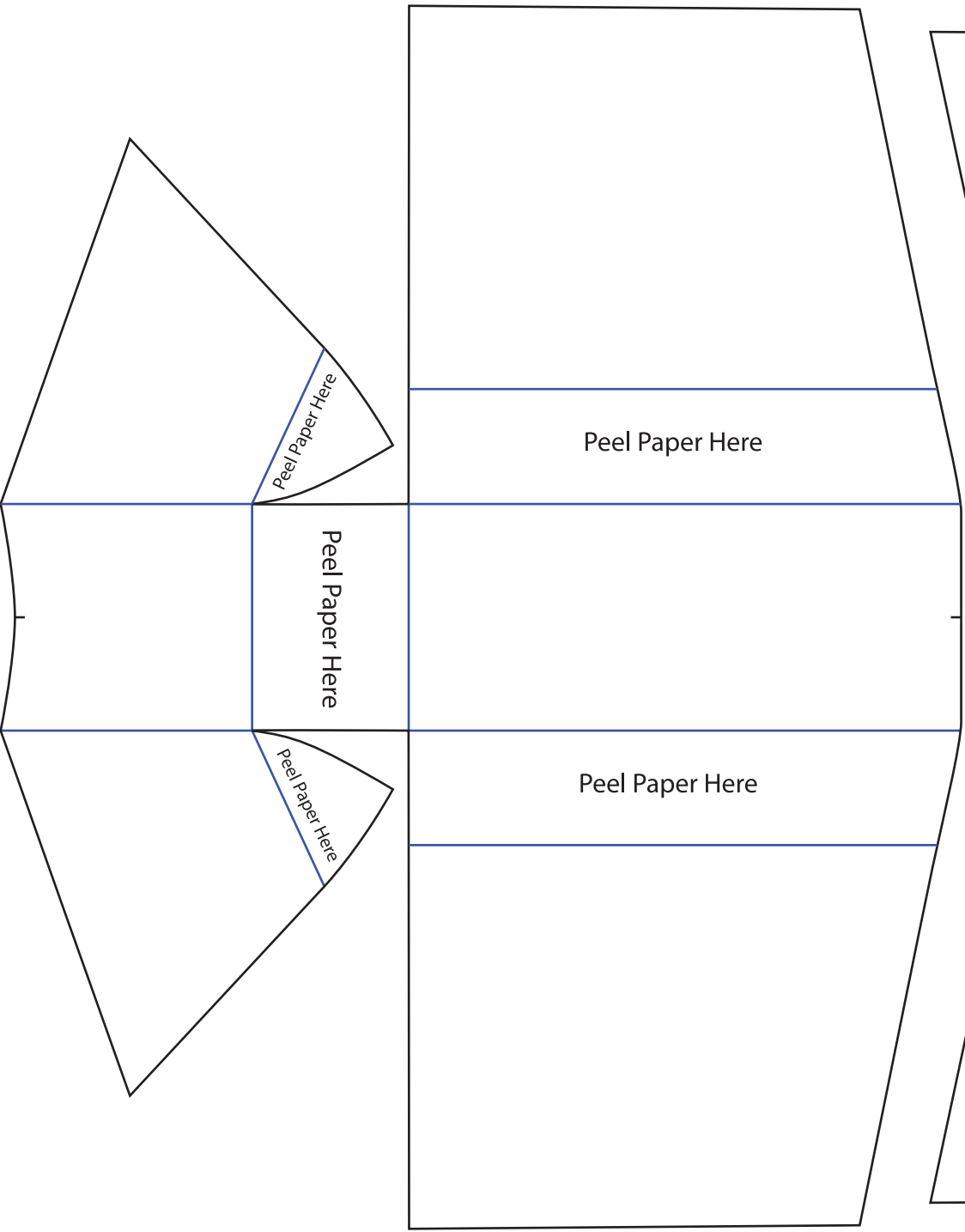


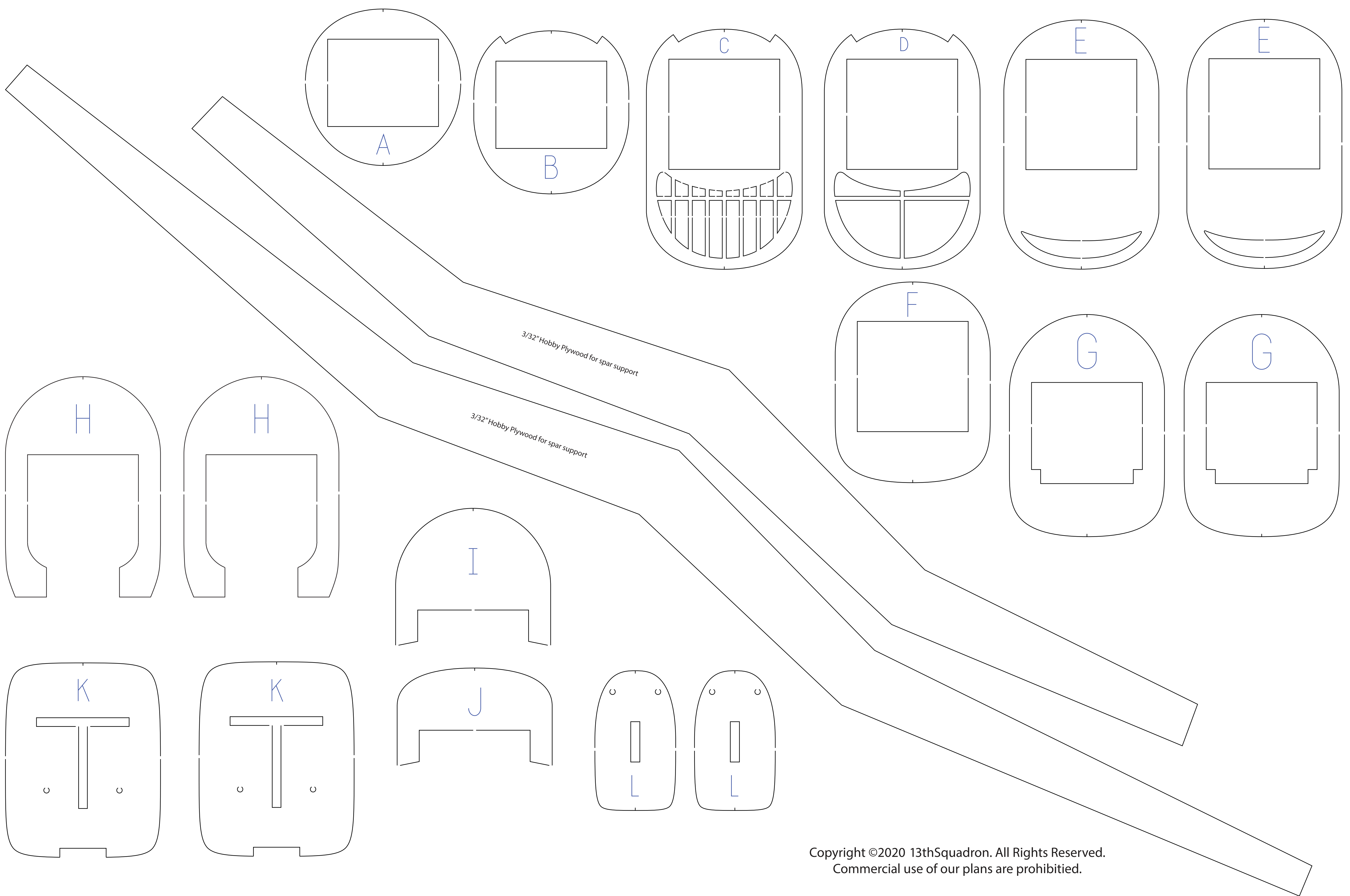
This piece slides into the Main Fuselage Box. Do not glue it in yet!
Build everything from the "K" formers back. Once that is complete,
slide this whole section into the Main Fuselage Box and then glue
everything together.

Rudder piece slides into here
after "Doubler" pieces are glued
to each side.



Goes here





Copyright ©2020 13thSquadron. All Rights Reserved.
Commercial use of our plans are prohibited.

Top Left Wing

Bottom Left Wing

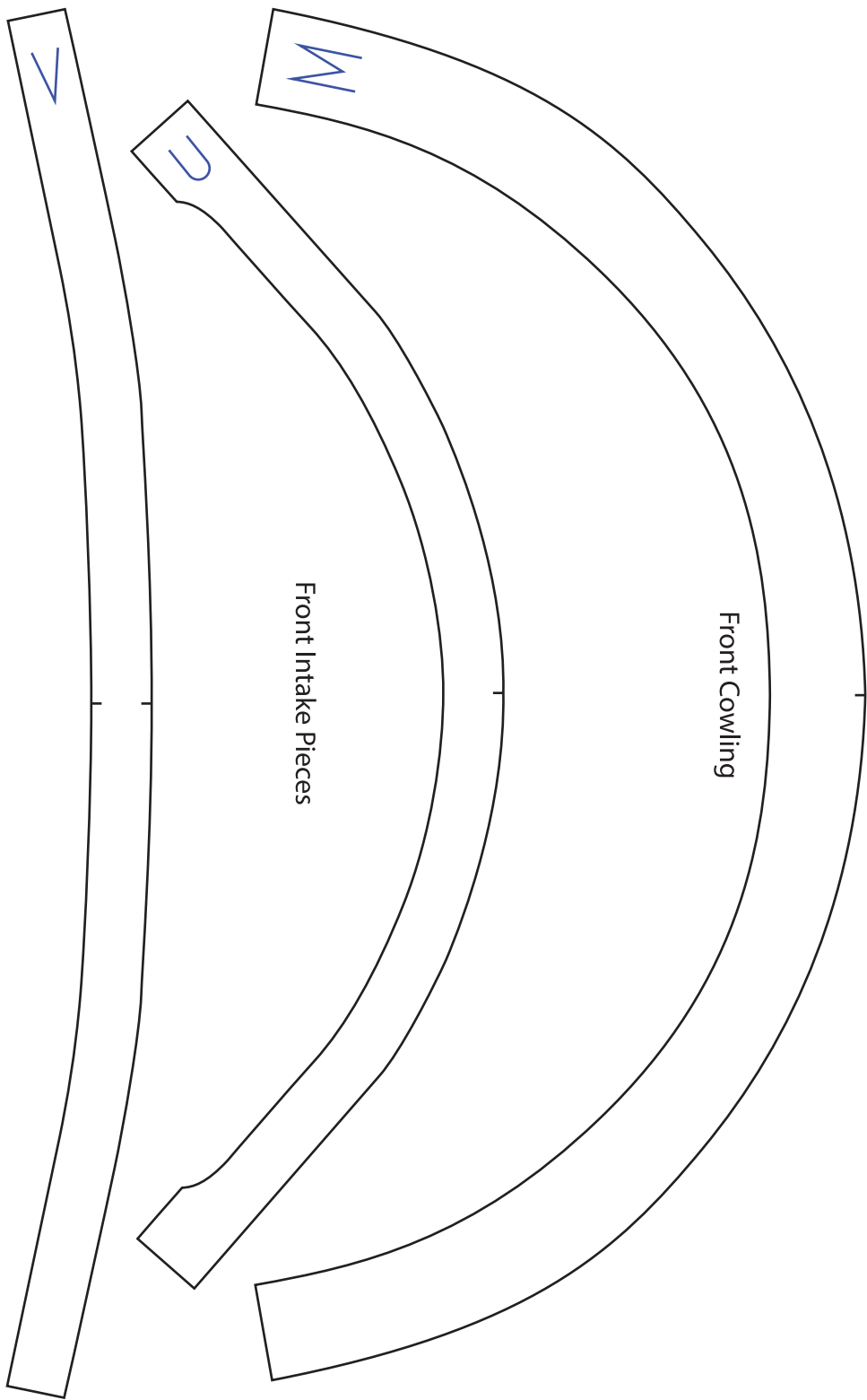
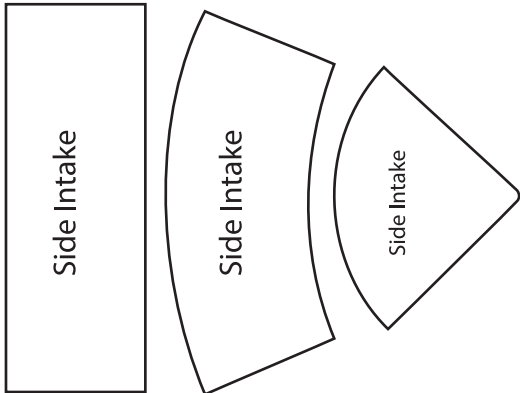
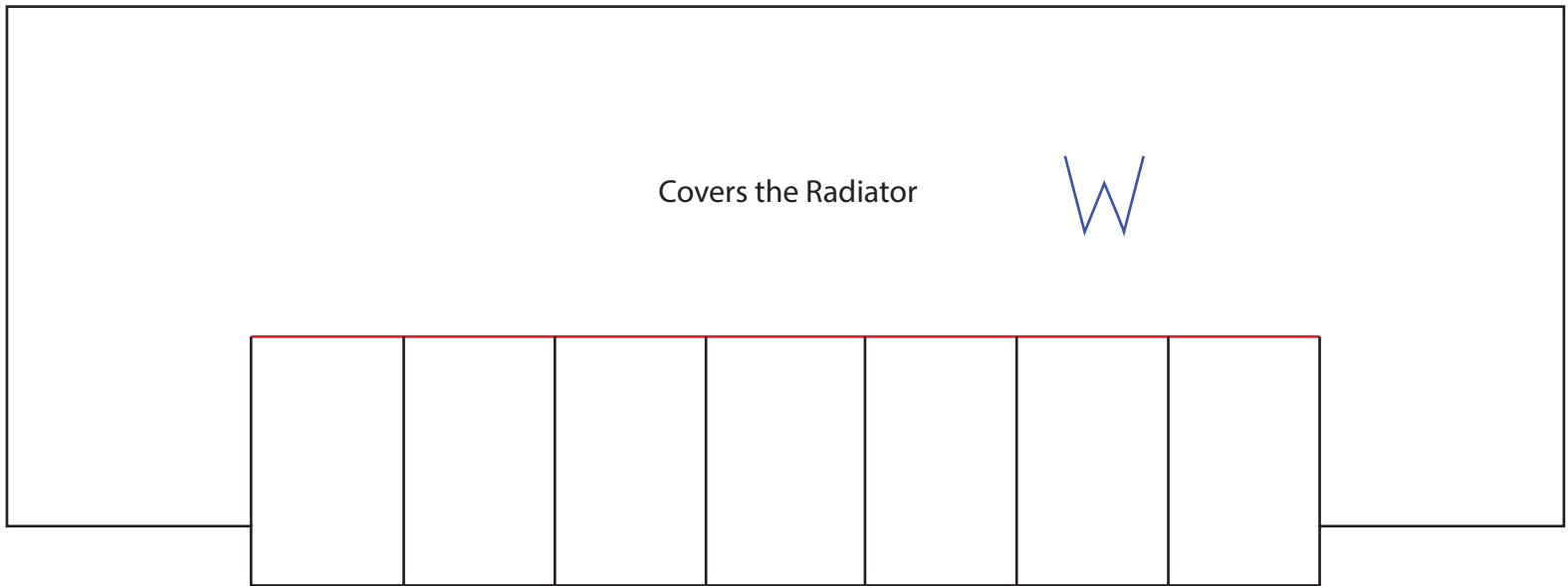
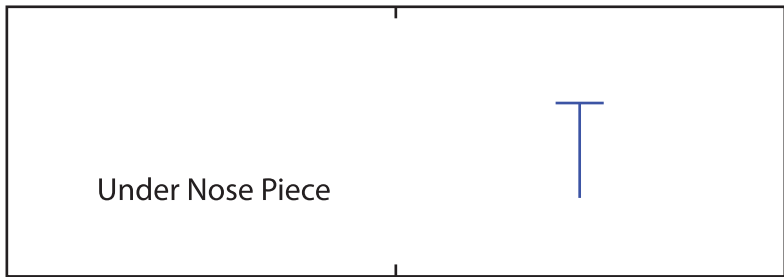
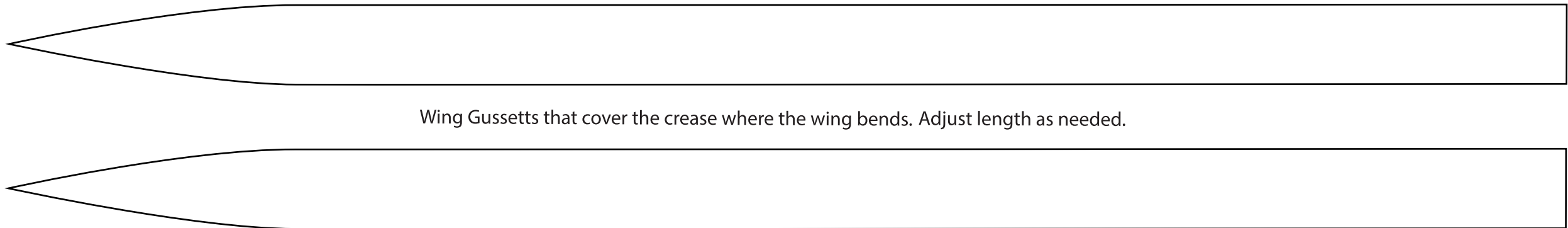
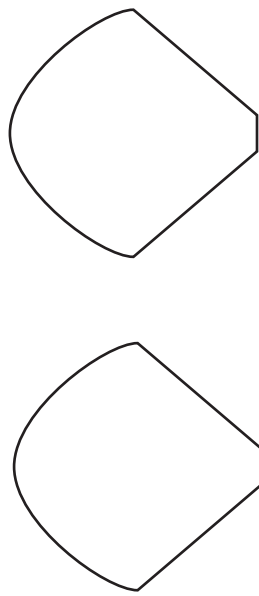
Wing Fairing

Wing Fairing

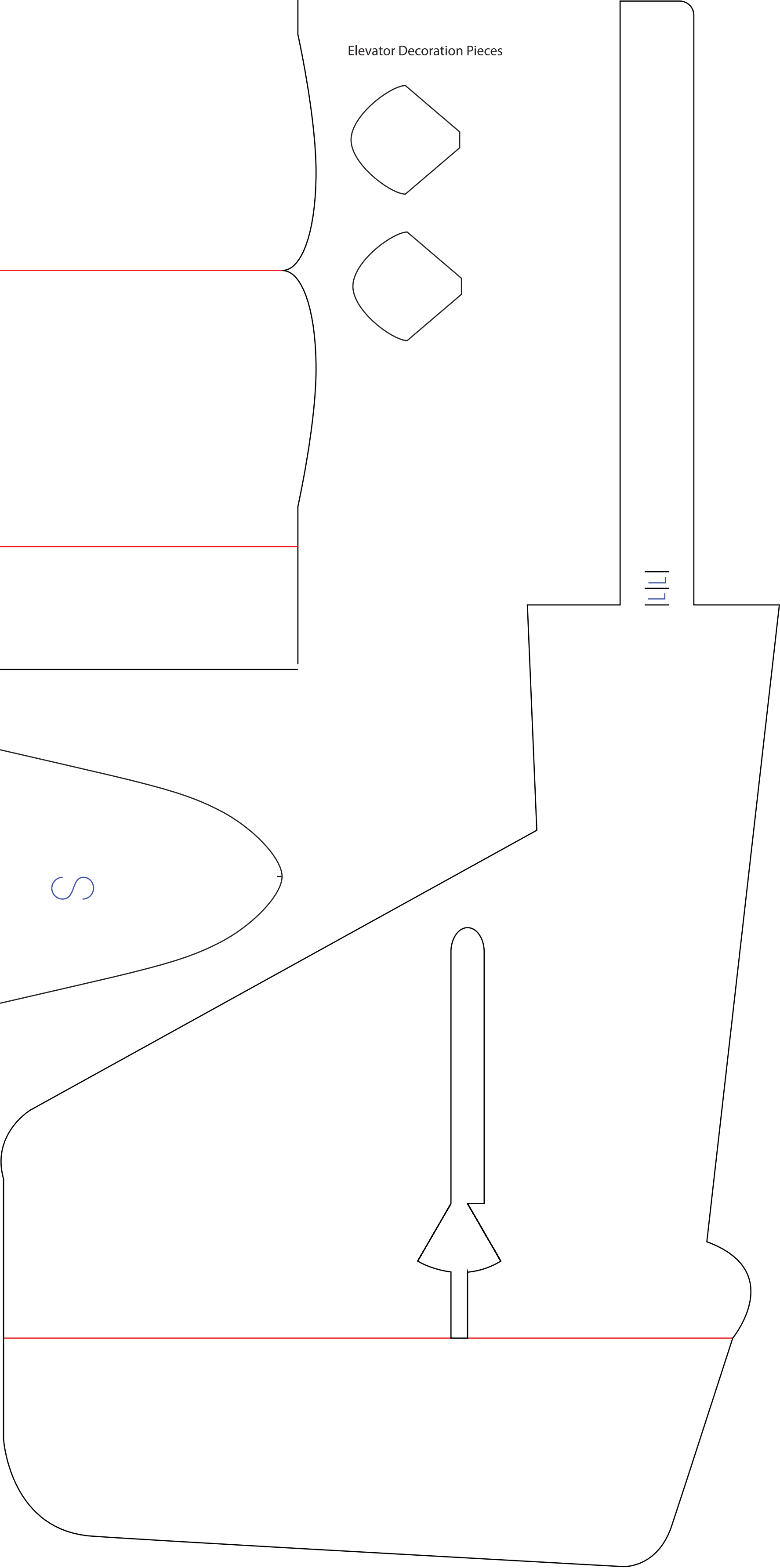
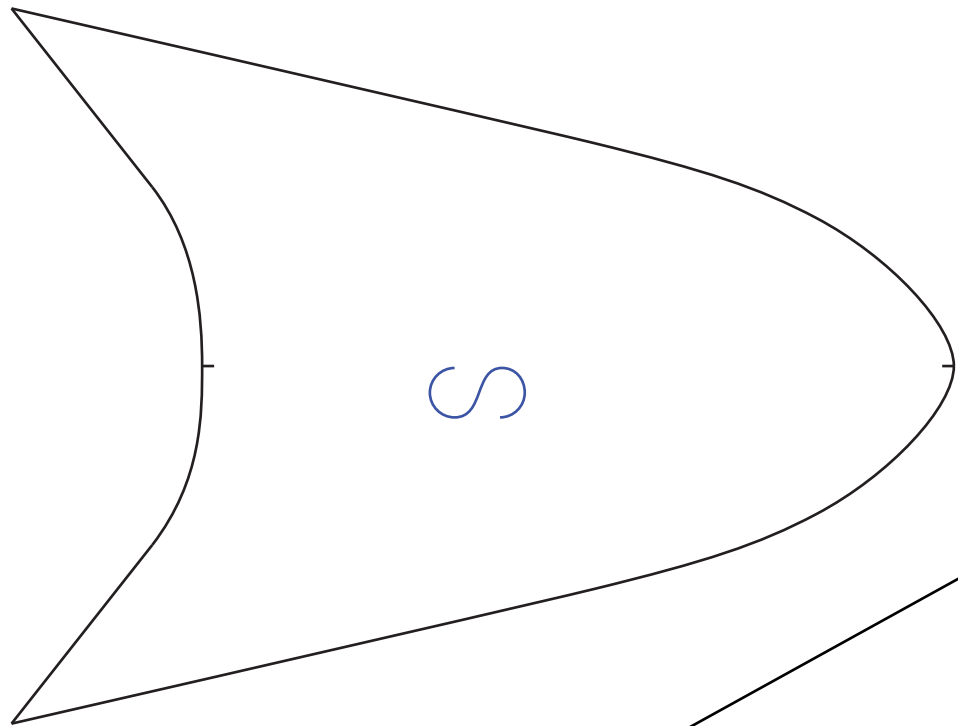
Landing gear
hole.



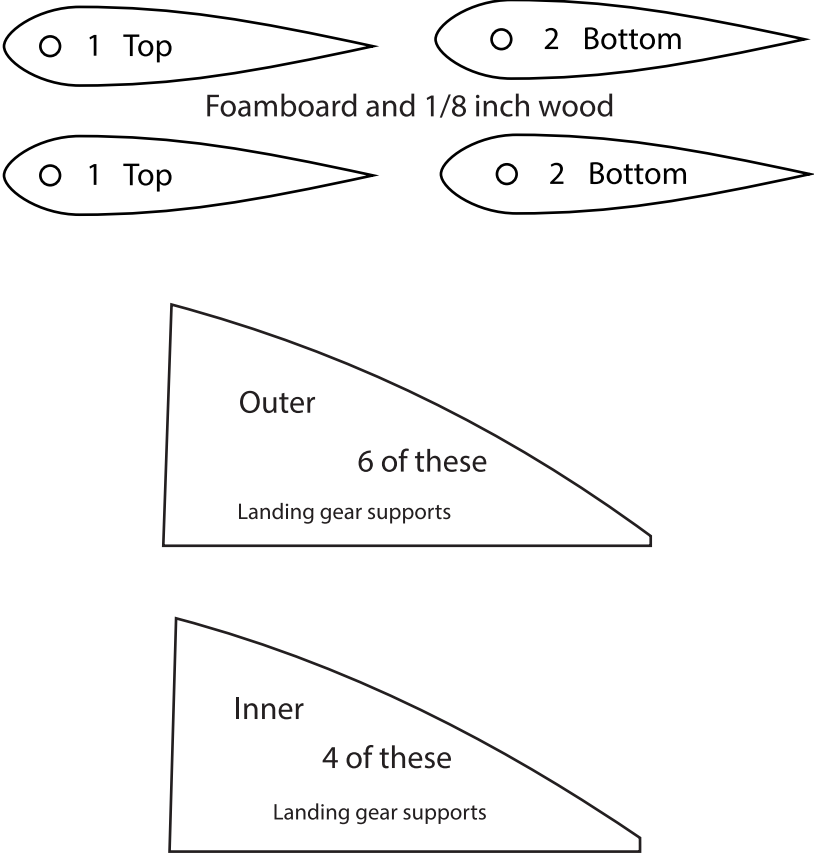
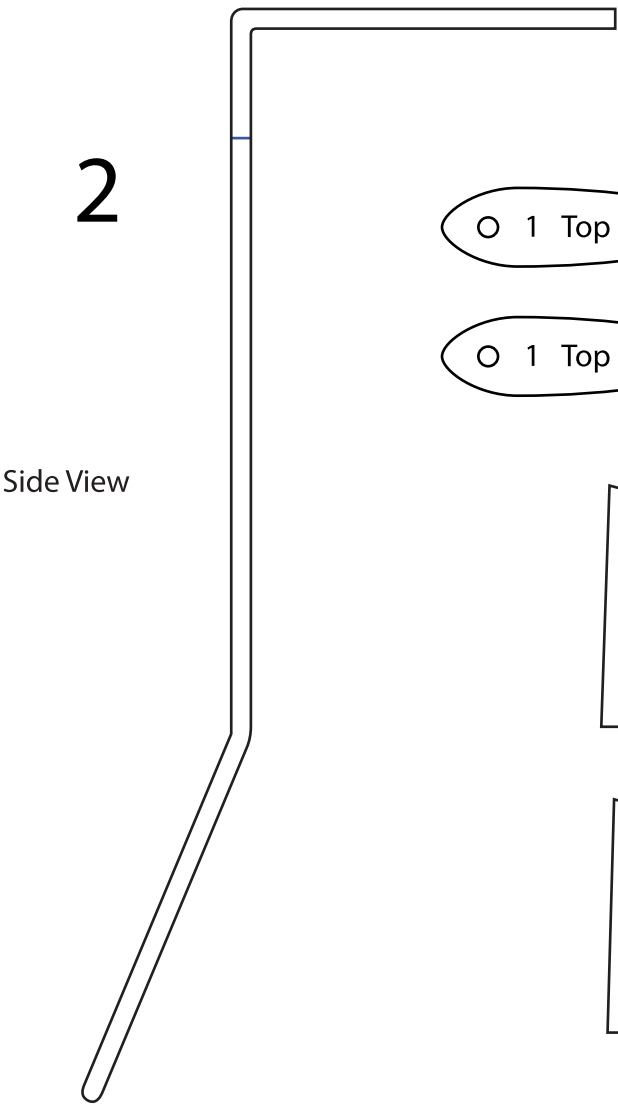
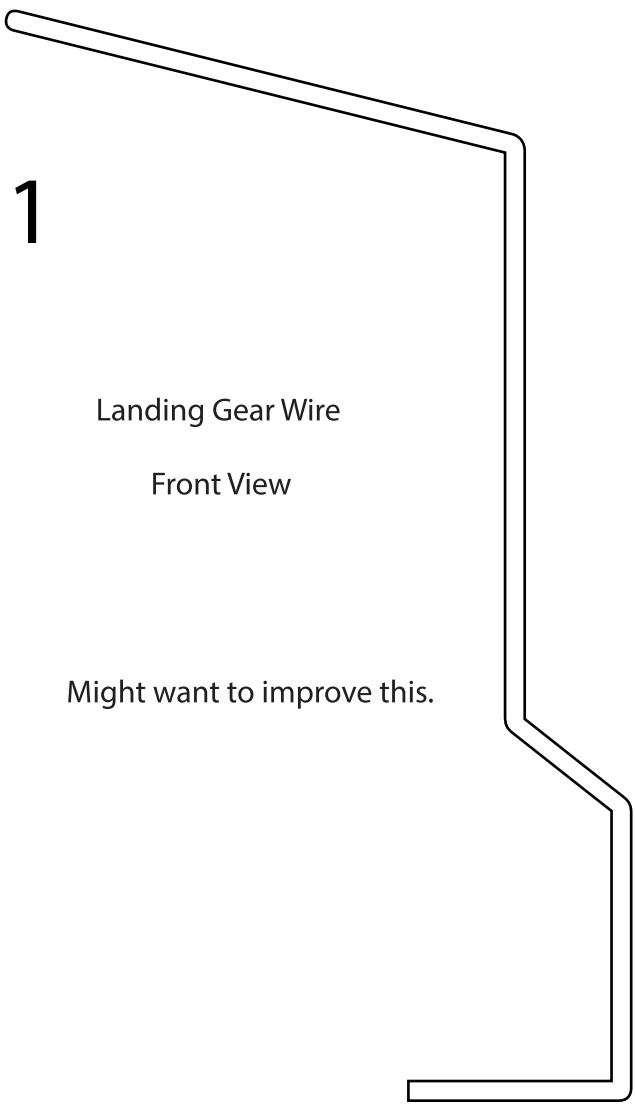
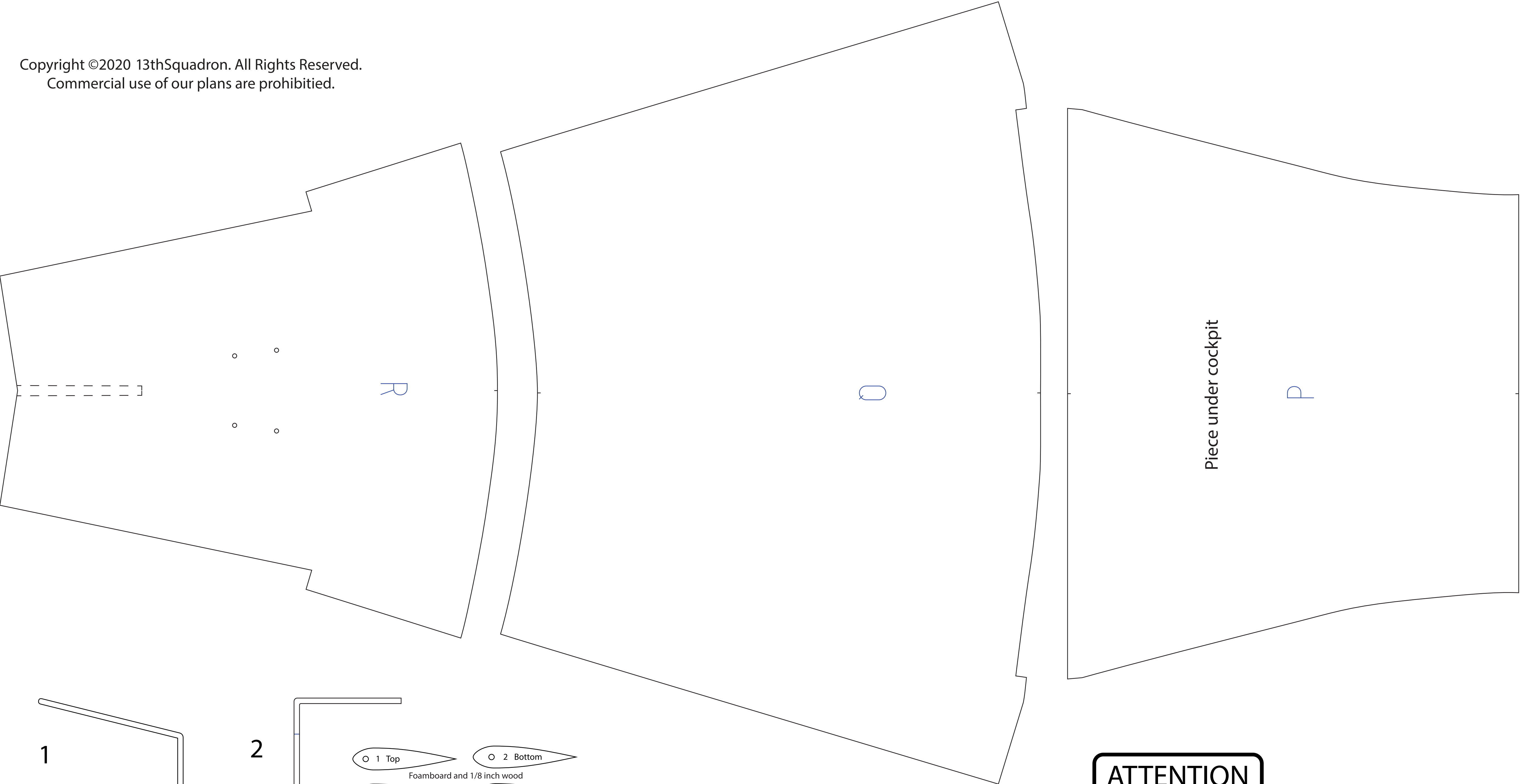
Elevator Decoration Pieces



Copyright ©2020 13thSquadron. All Rights Reserved.
Commercial use of our plans are prohibited.



Copyright ©2020 13thSquadron. All Rights Reserved.
Commercial use of our plans are prohibited.



ATTENTION

Please keep in mind that these are Beta Plans. We haven't made a second plane yet to find out if all of these parts are correct but these are the pieces we used to make our Stuka. We assume that if you are challenging yourself to make this plane, you probably have the knowledge to fix any imperfections we haven't figured out yet. Good luck with the build and we hope you enjoy the plane!

