

S2

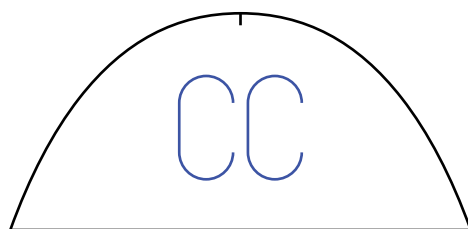
Aluminum Spar (1/16 x 1/2 x 42.5 in)

The order for the spars in order from front of the plane to the back goes:
Aluminum Spar, S1. then S2

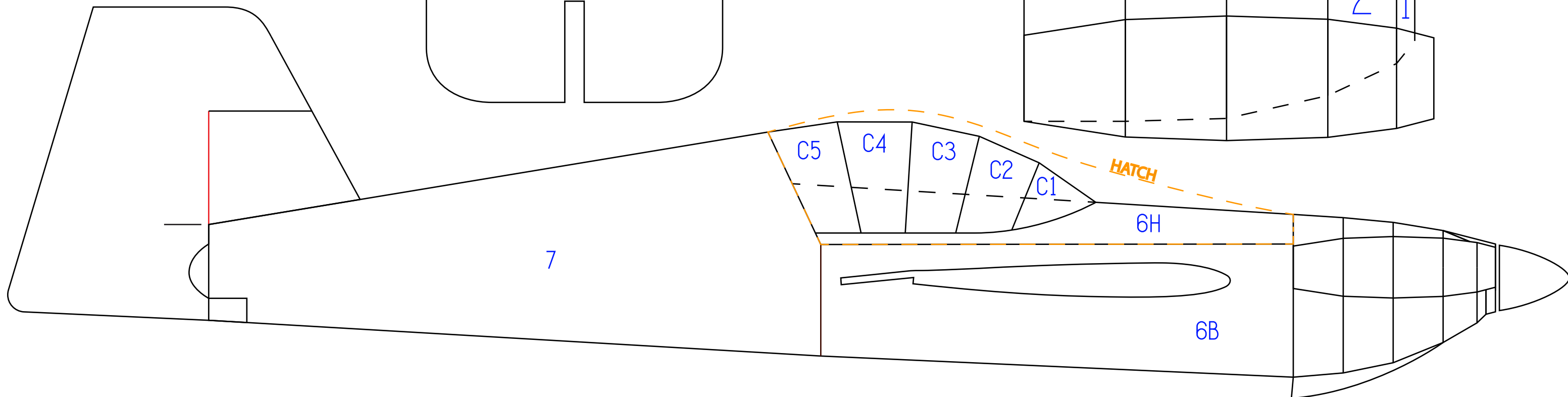
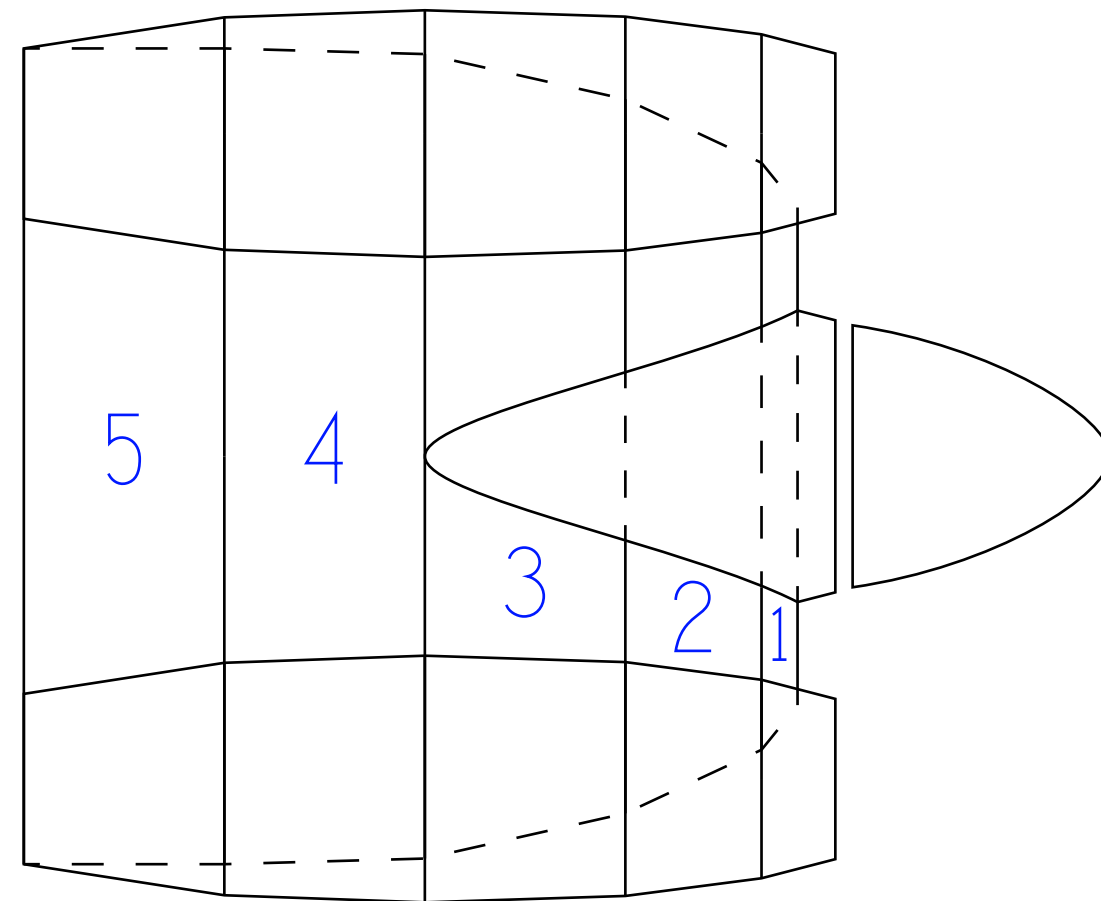
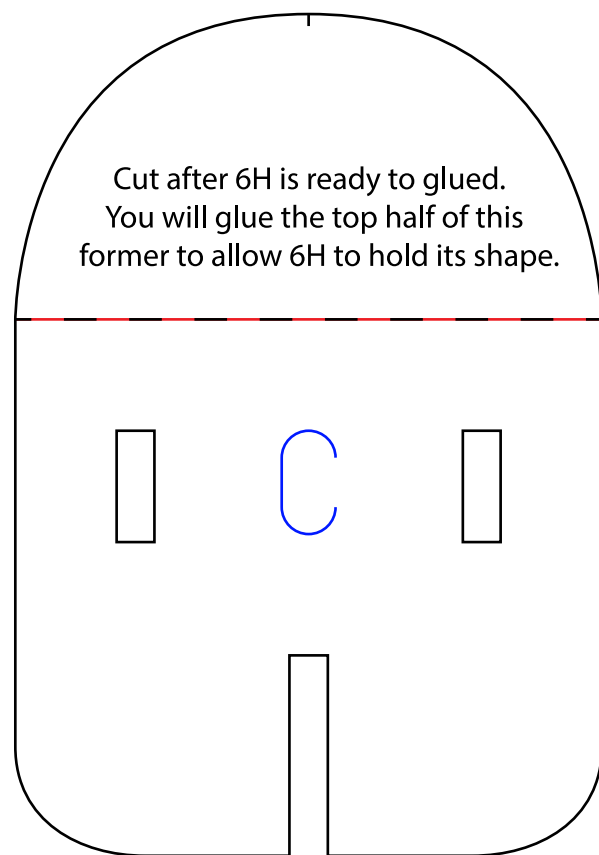
20"

(Two of these)

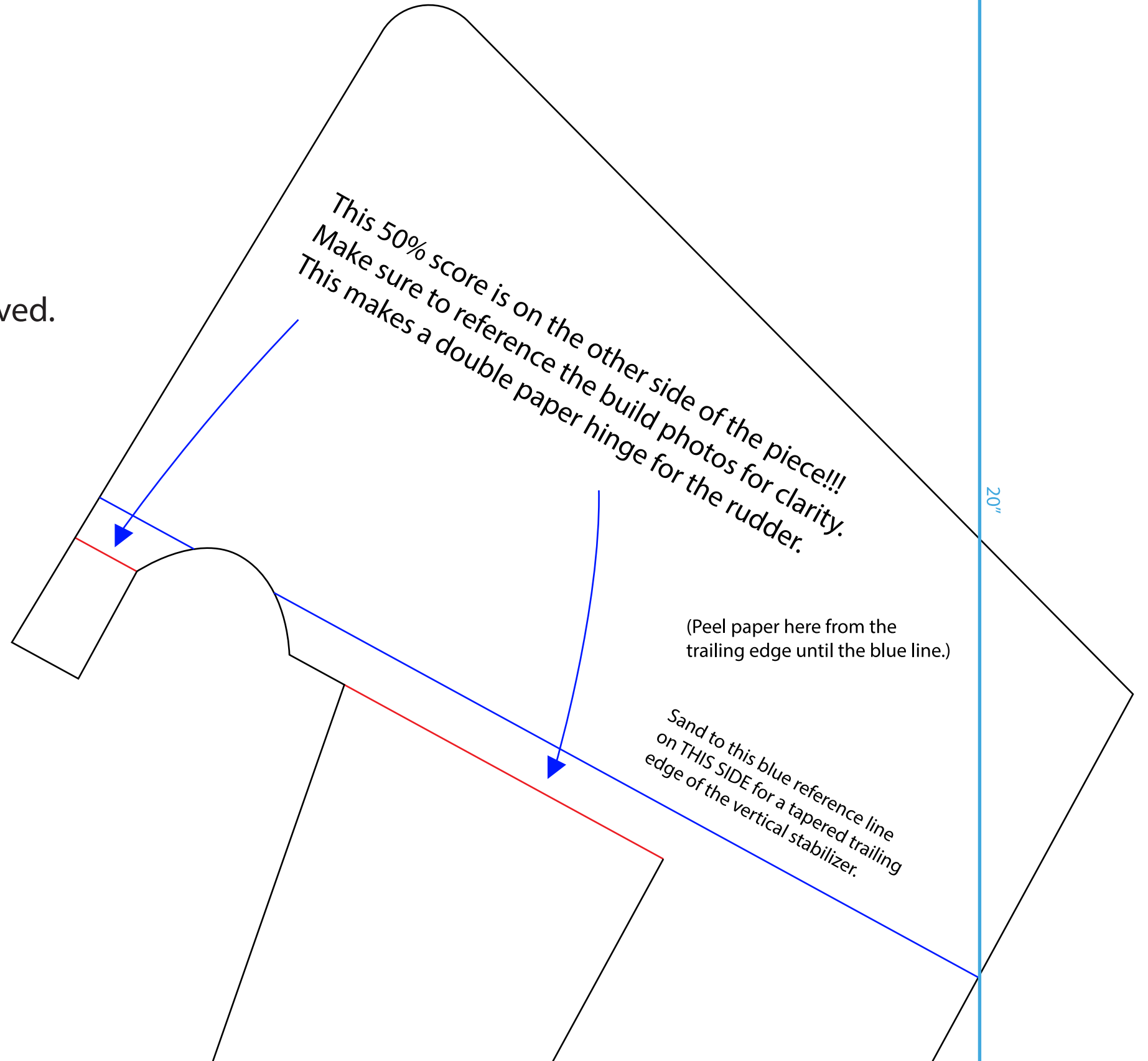
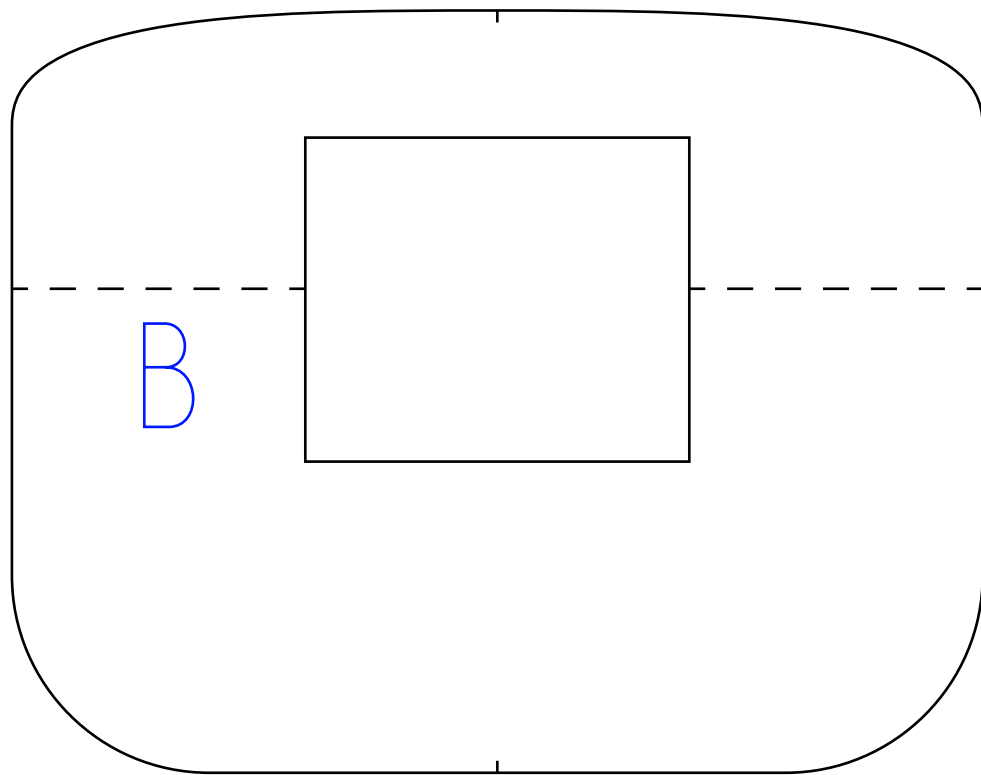
S1



Former for C5 piece to give the canopy it's shape.



Copyright ©2023 13thSquadron. All Rights Reserved.
Commercial use of our plans are prohibited.





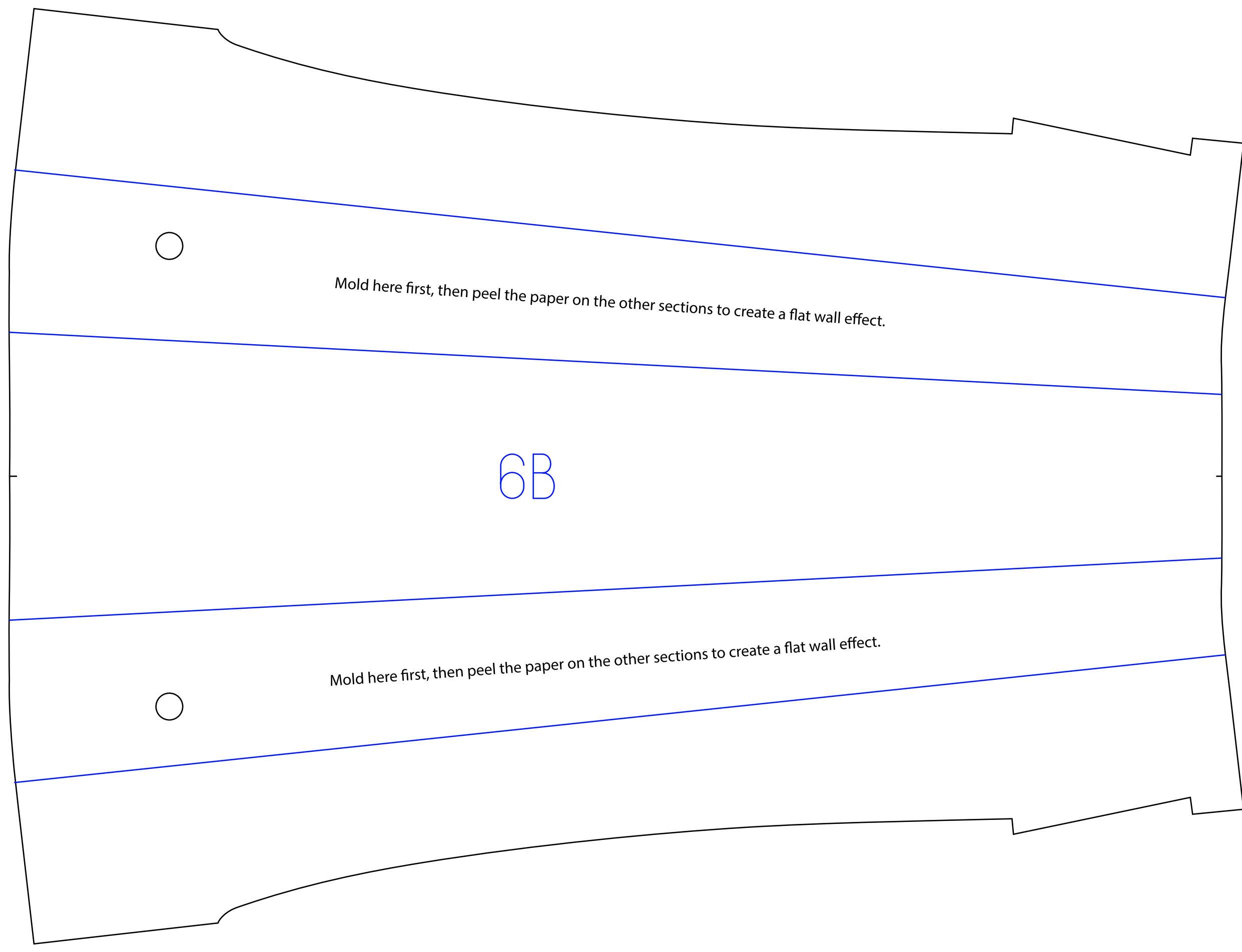
Peel all the paper off here.

20"



This blue/red reference line is for you to bevel to to allow more throw for the aileron and to make sure the bottom trailing edge lines up with. This makes sure that your wing is symmetrical and even on both sides.



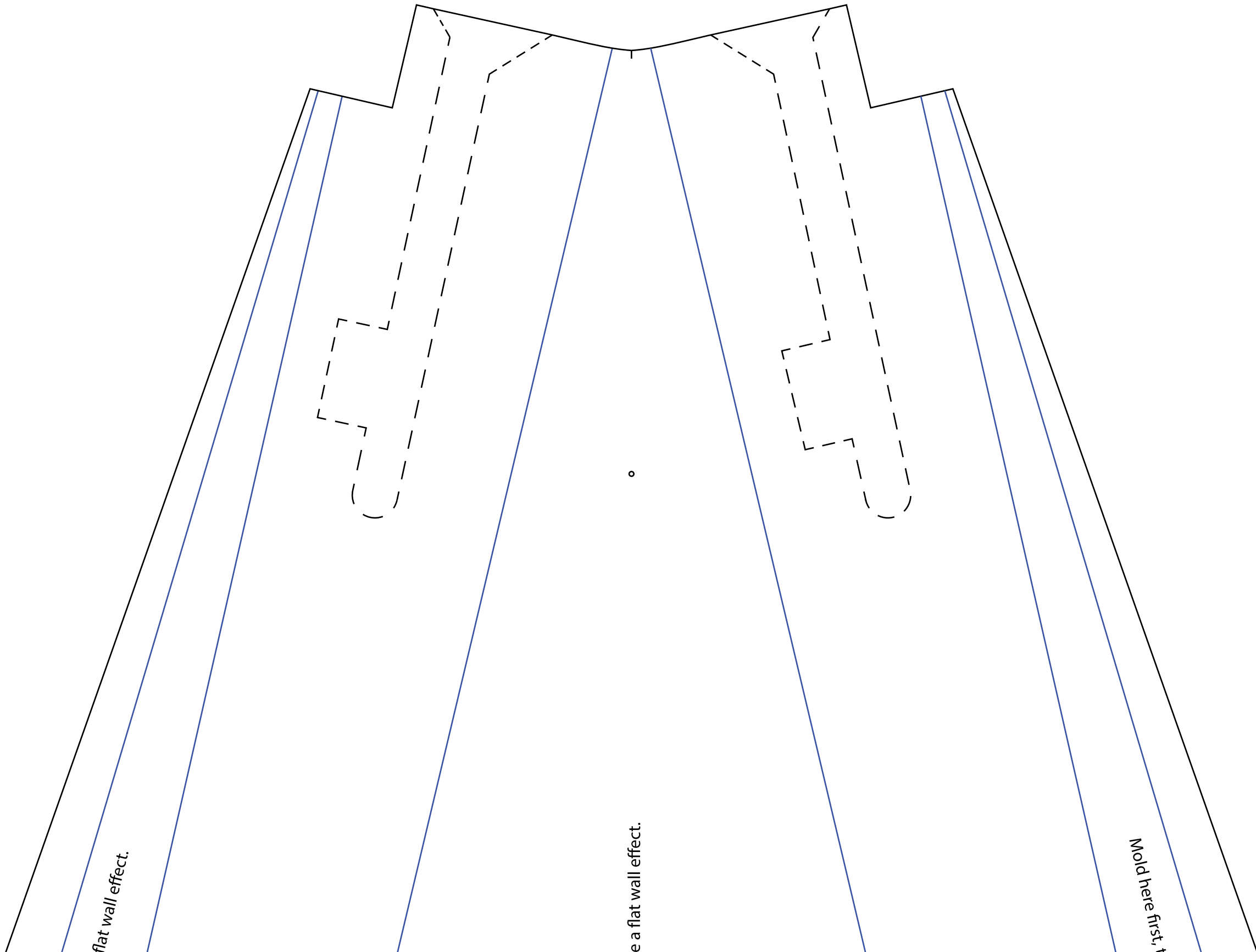


Mold here first, then peel the paper on the other sections to create a flat wall effect.

6B



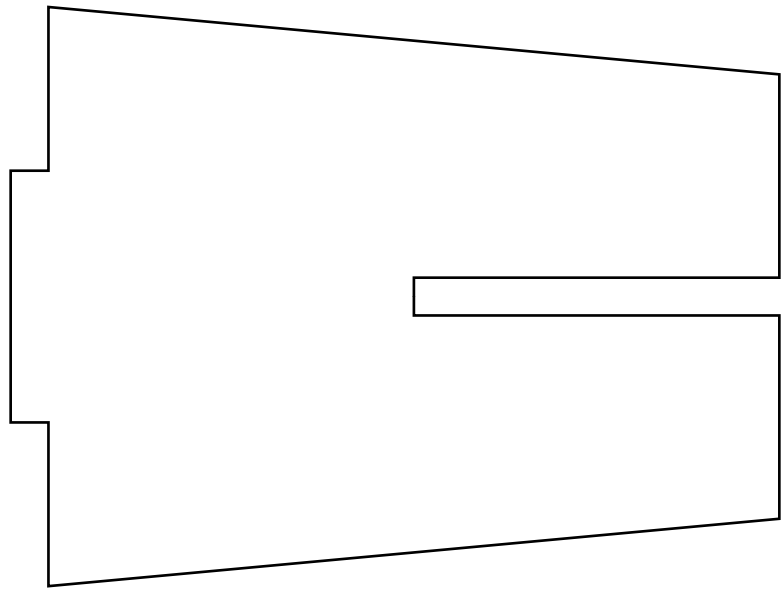
Mold here first, then peel the paper on the other sections to create a flat wall effect.



flat wall effect.

e a flat wall effect.

Mold here first,

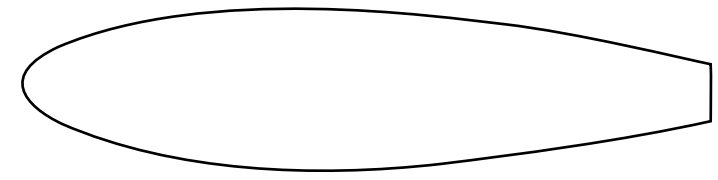


C

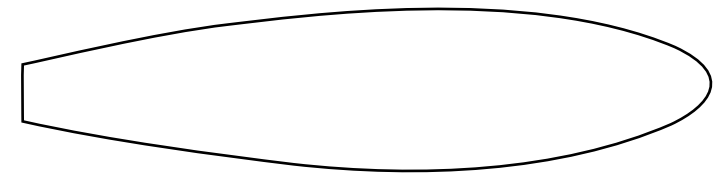


Landing Gear Mount Location

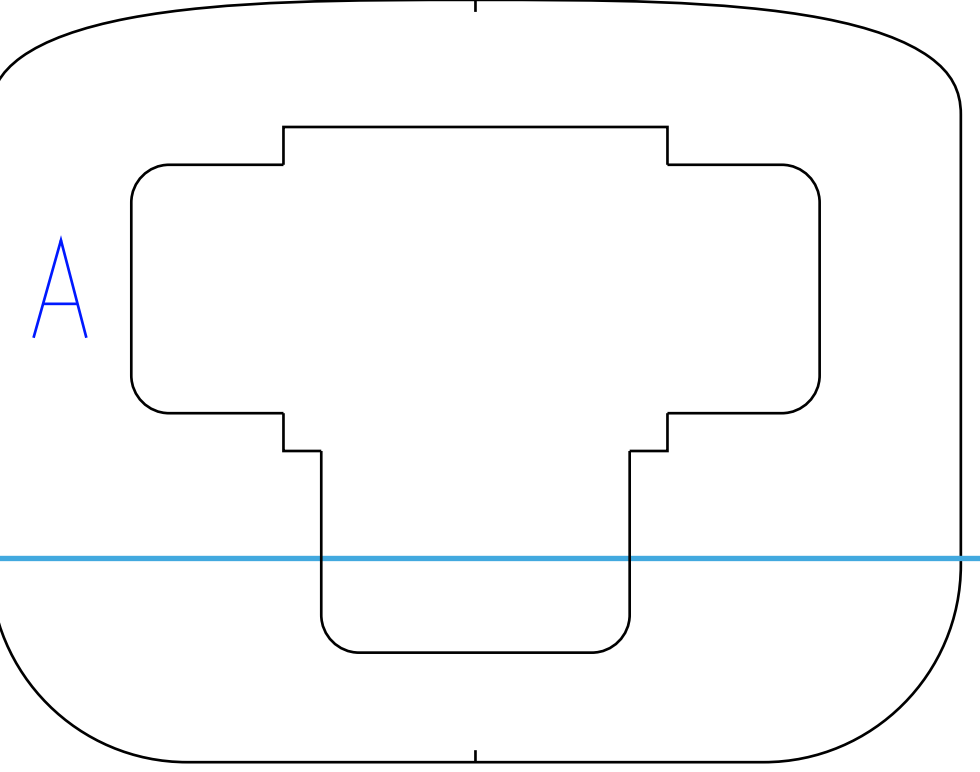
C



Wing Endplates (Posterboard)



20"



A

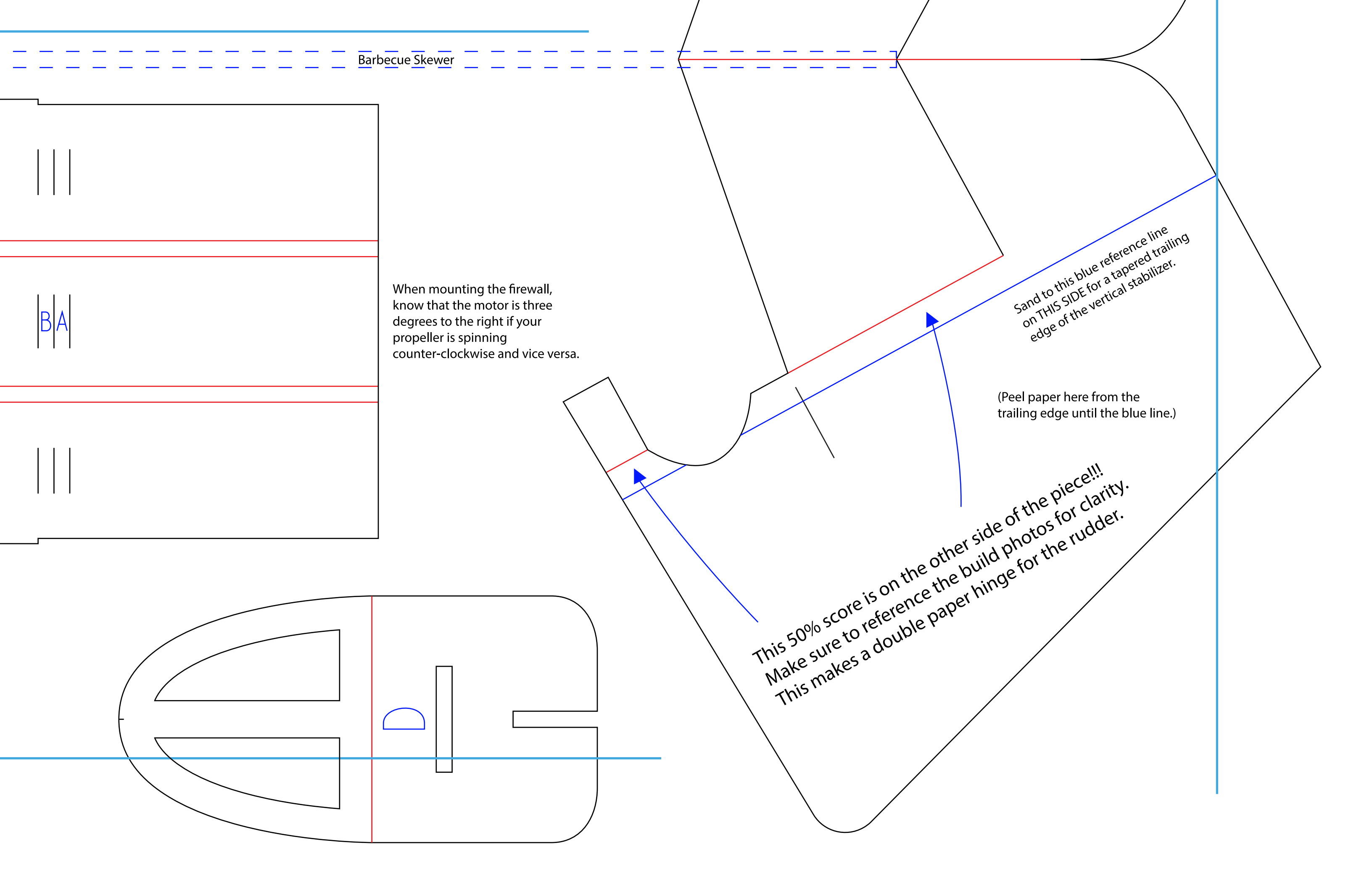
Barbecue Skewer

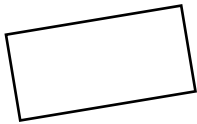
When mounting the firewall, know that the motor is three degrees to the right if your propeller is spinning counter-clockwise and vice versa.

Sand to this blue reference line on THIS SIDE for a tapered trailing edge of the vertical stabilizer.

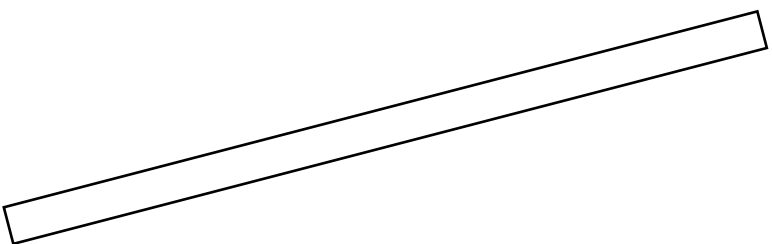
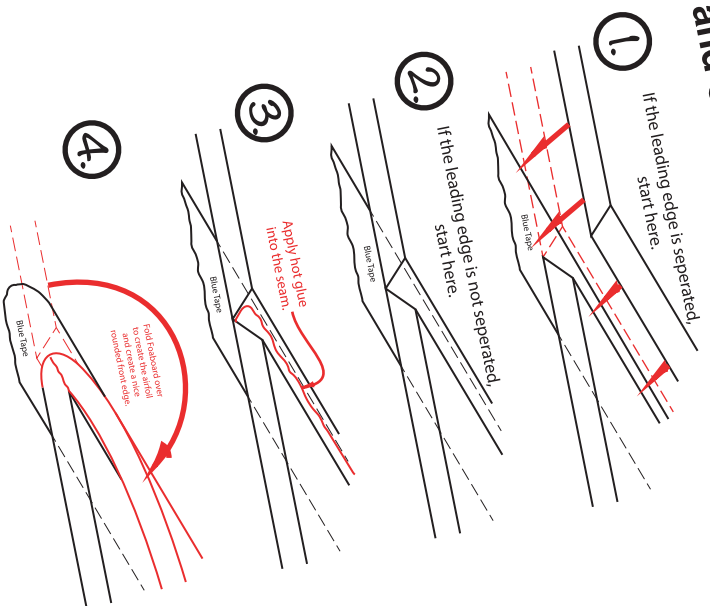
(Peel paper here from the trailing edge until the blue line.)

This 50% score is on the other side of the piece!!!
Make sure to reference the build photos for clarity.
This makes a double paper hinge for the rudder.





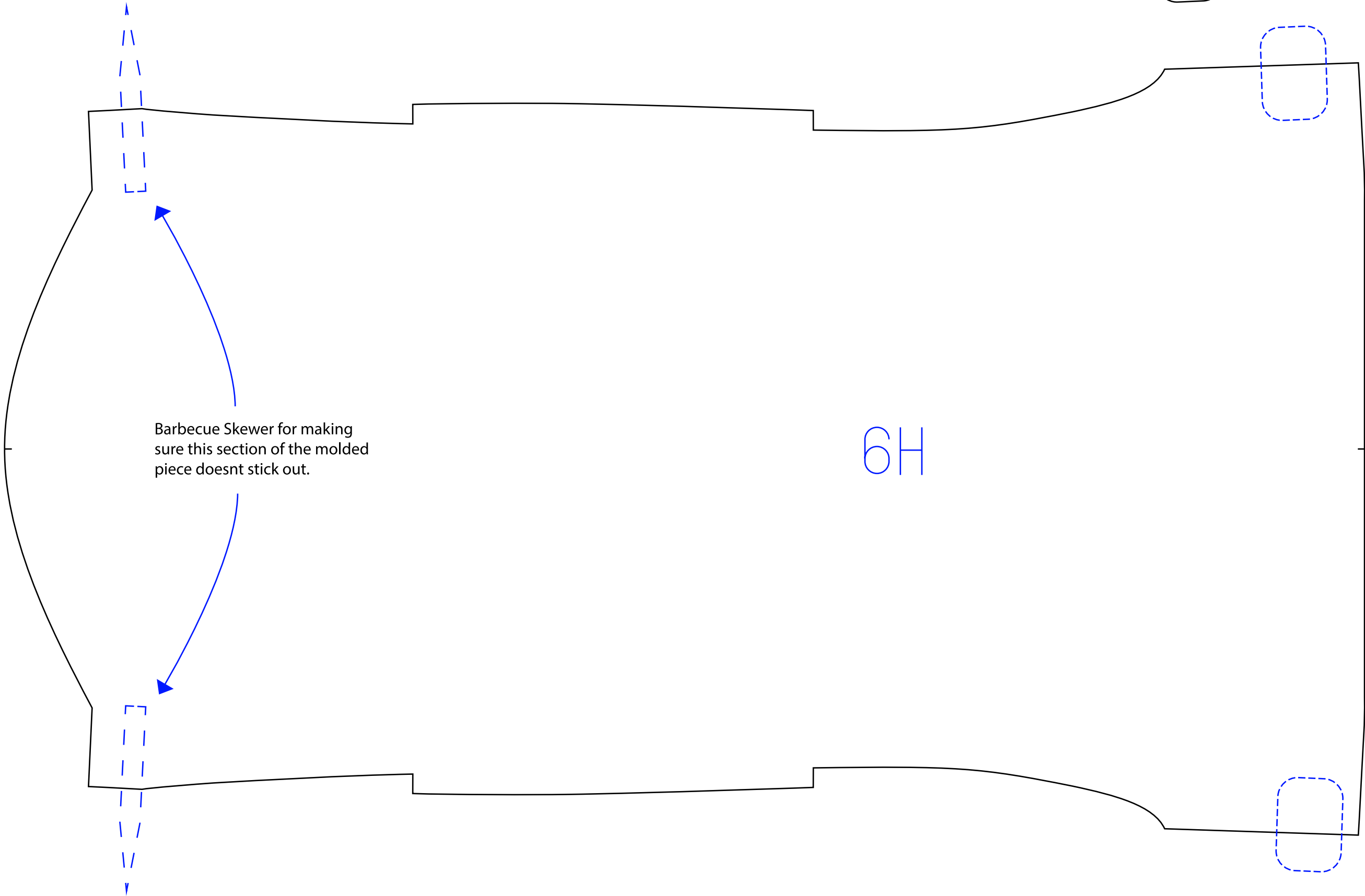
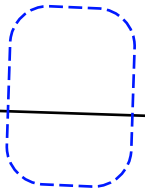
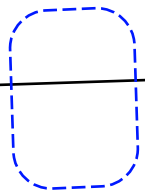
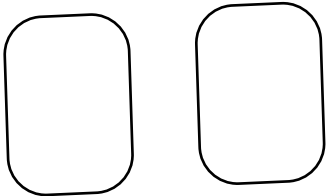
How to do the Leading Edges of the wings and elevator.



Peel paper up till this line.

(Leave paper here)

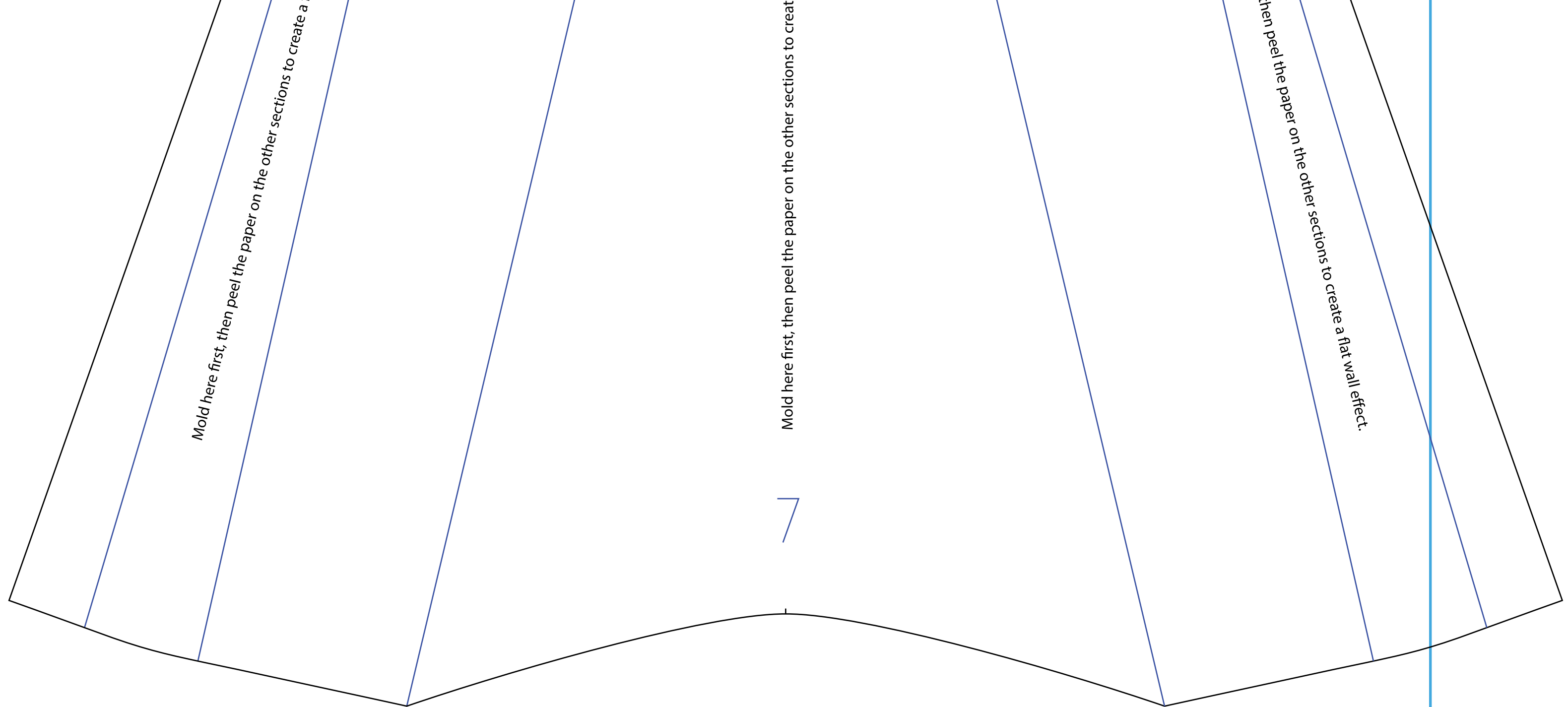
Copyright ©2023 13thSquadron. All Rights Reserved.
Commercial use of our plans are prohibited.



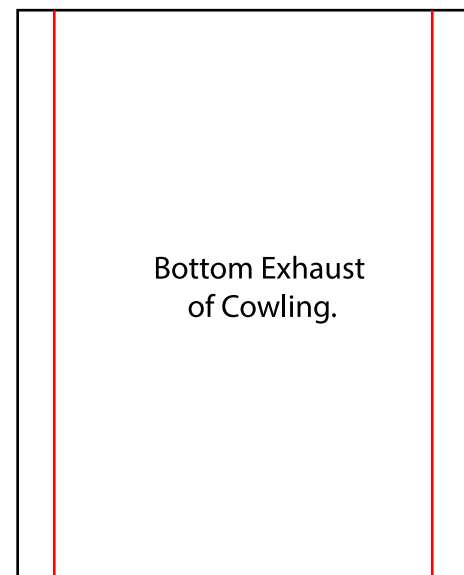
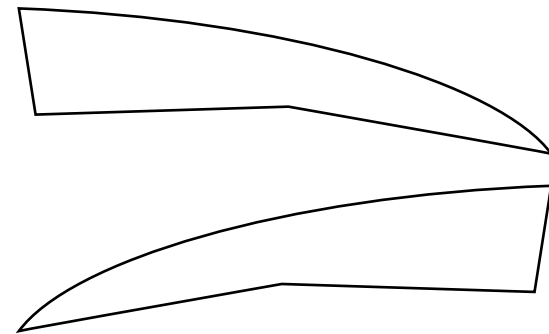
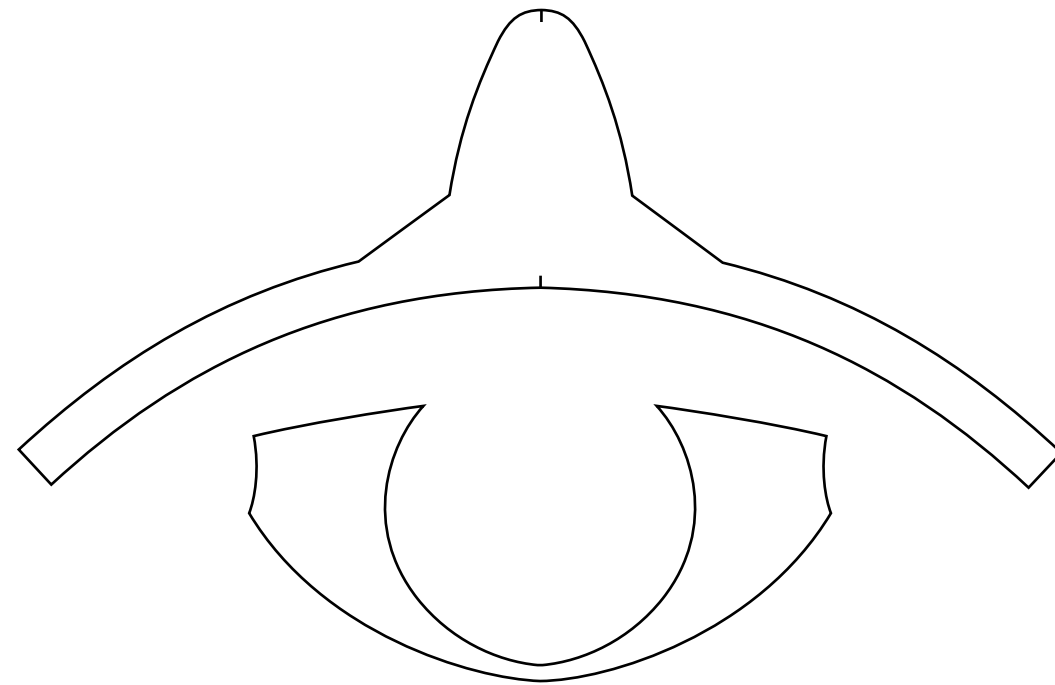
Barbecue Skewer for making
sure this section of the molded
piece doesnt stick out.

6H

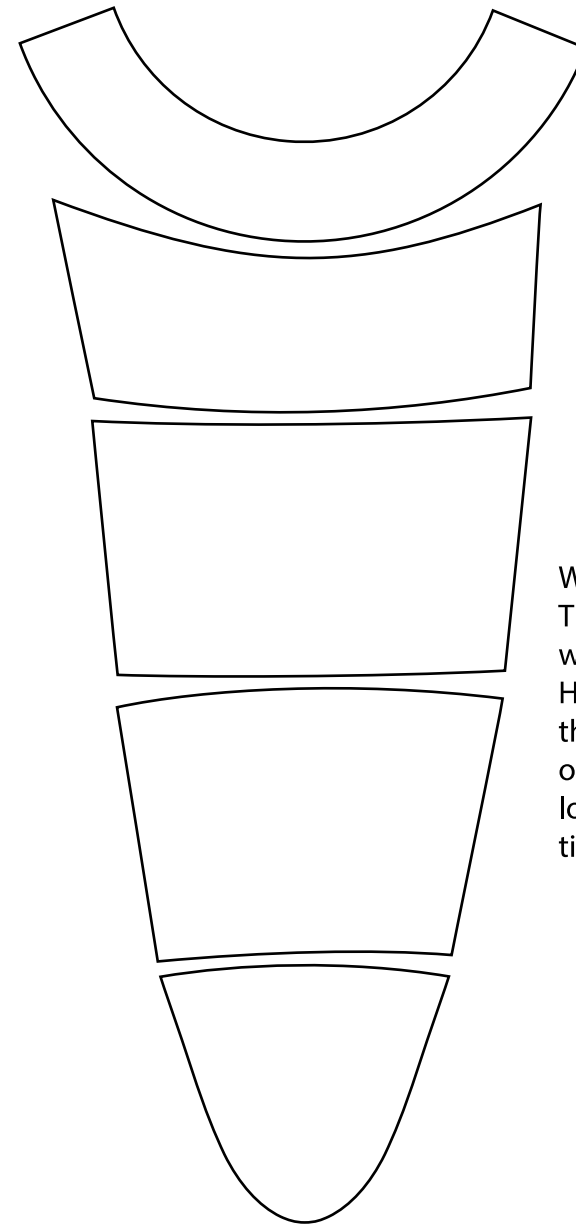
20"



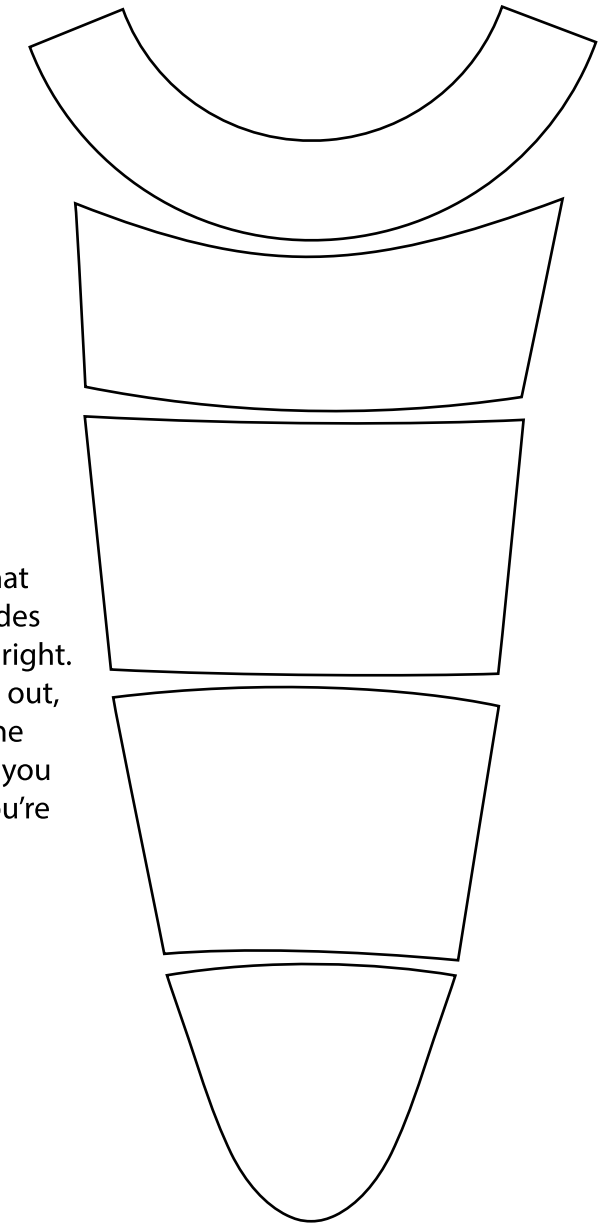
Copyright ©2023 13thSquadron. All Rights Reserved.
Commercial use of our plans are prohibited.



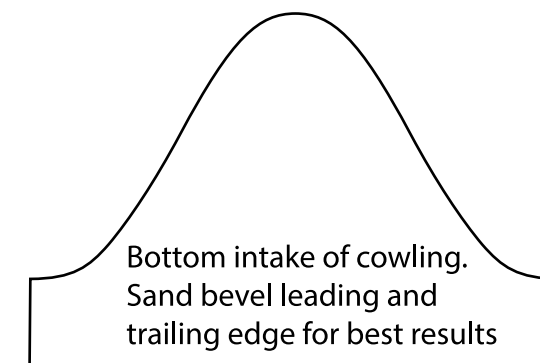
From the cockpits perspective
Left side

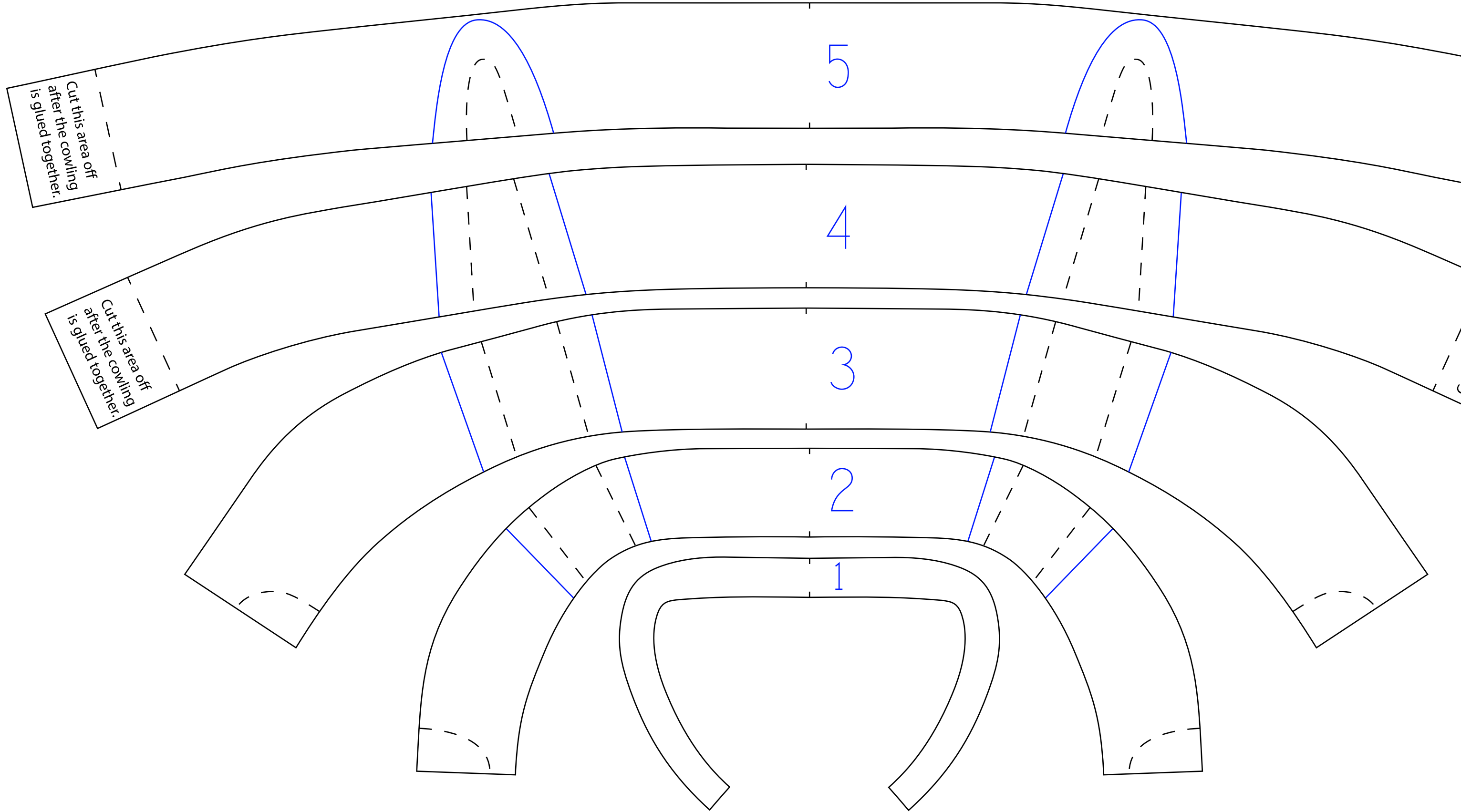


From the cockpits perspective
Right side



With these two side intakes, know that they are slightly different on each side which is why I labeled them left and right. However, when you cut these pieces out, these pieces get glued together in the orientation they are here. As long as you look at reference photos and take your time they will turn out beautiful.



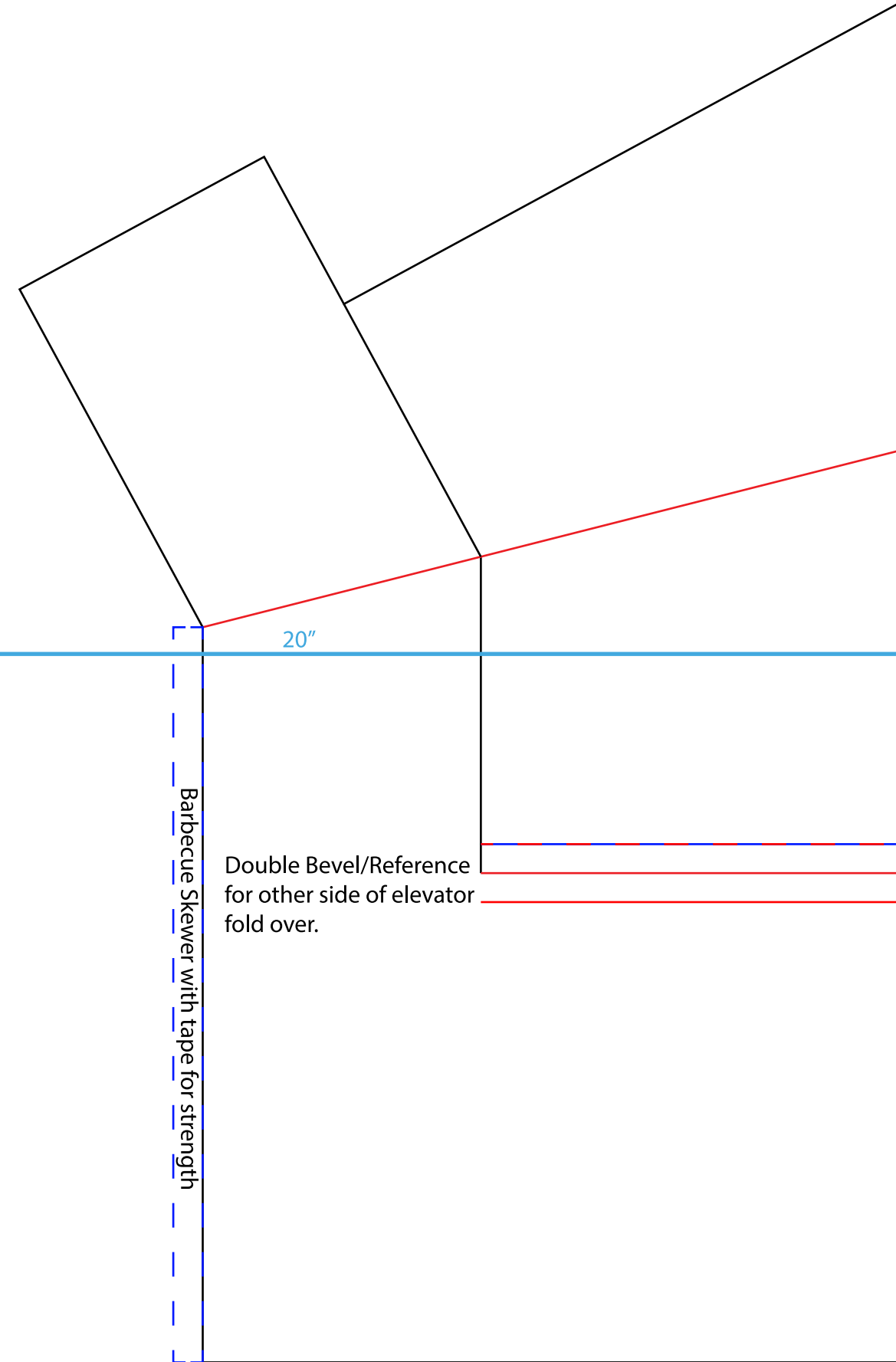
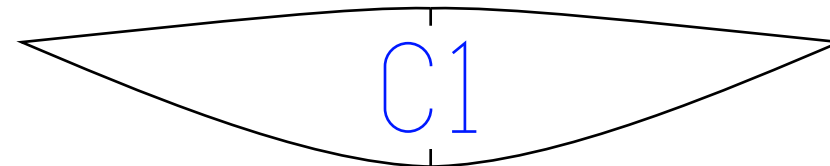
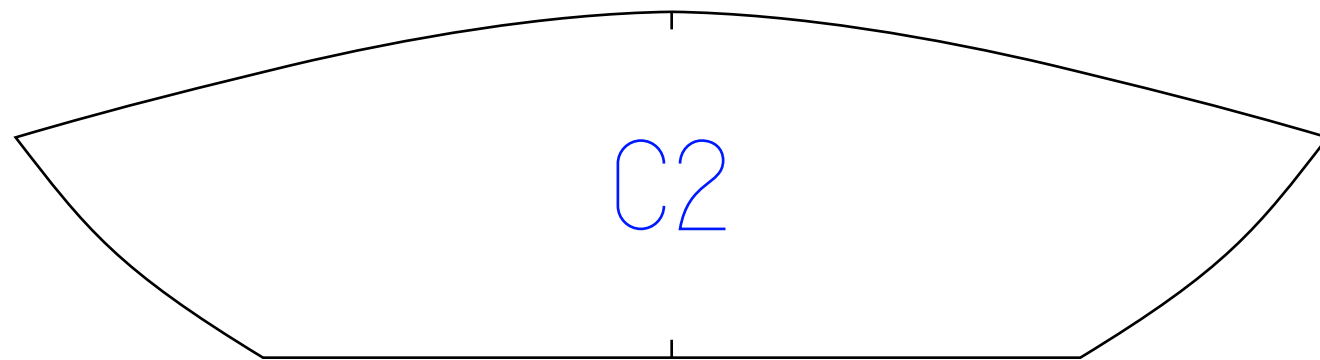
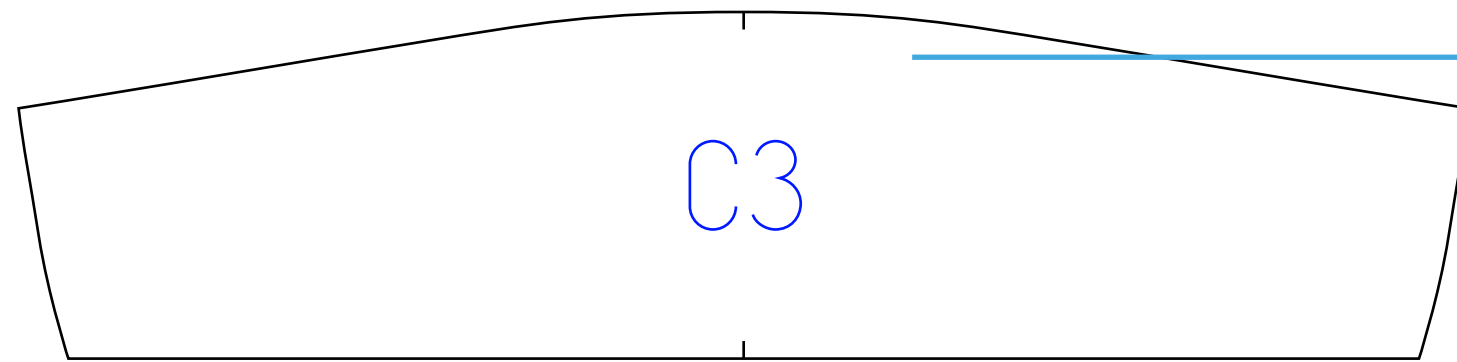
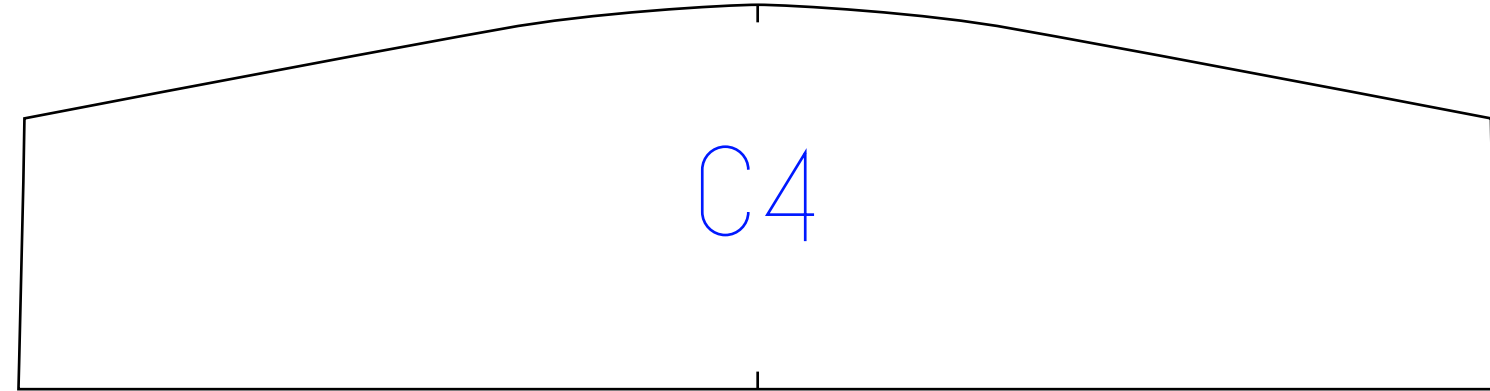
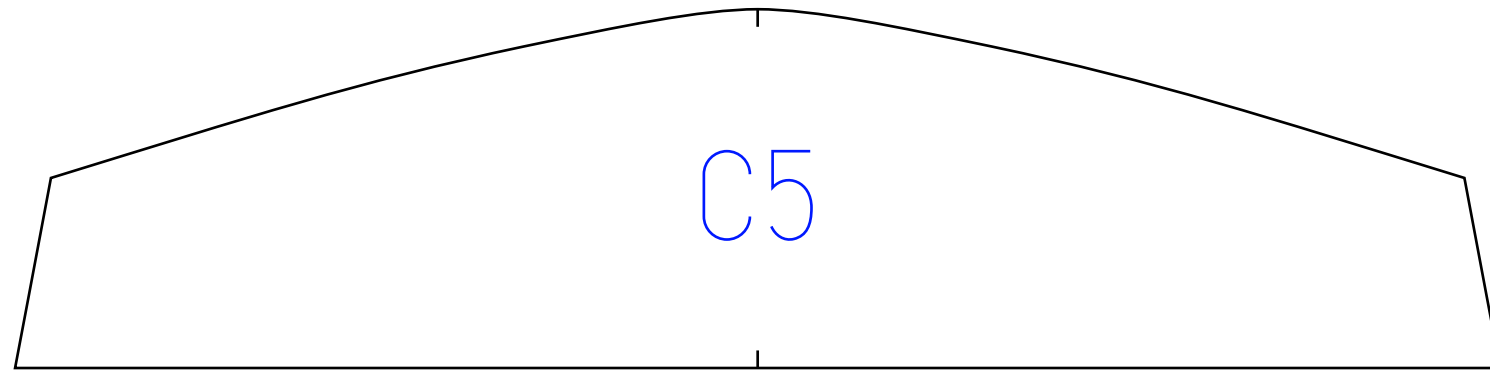


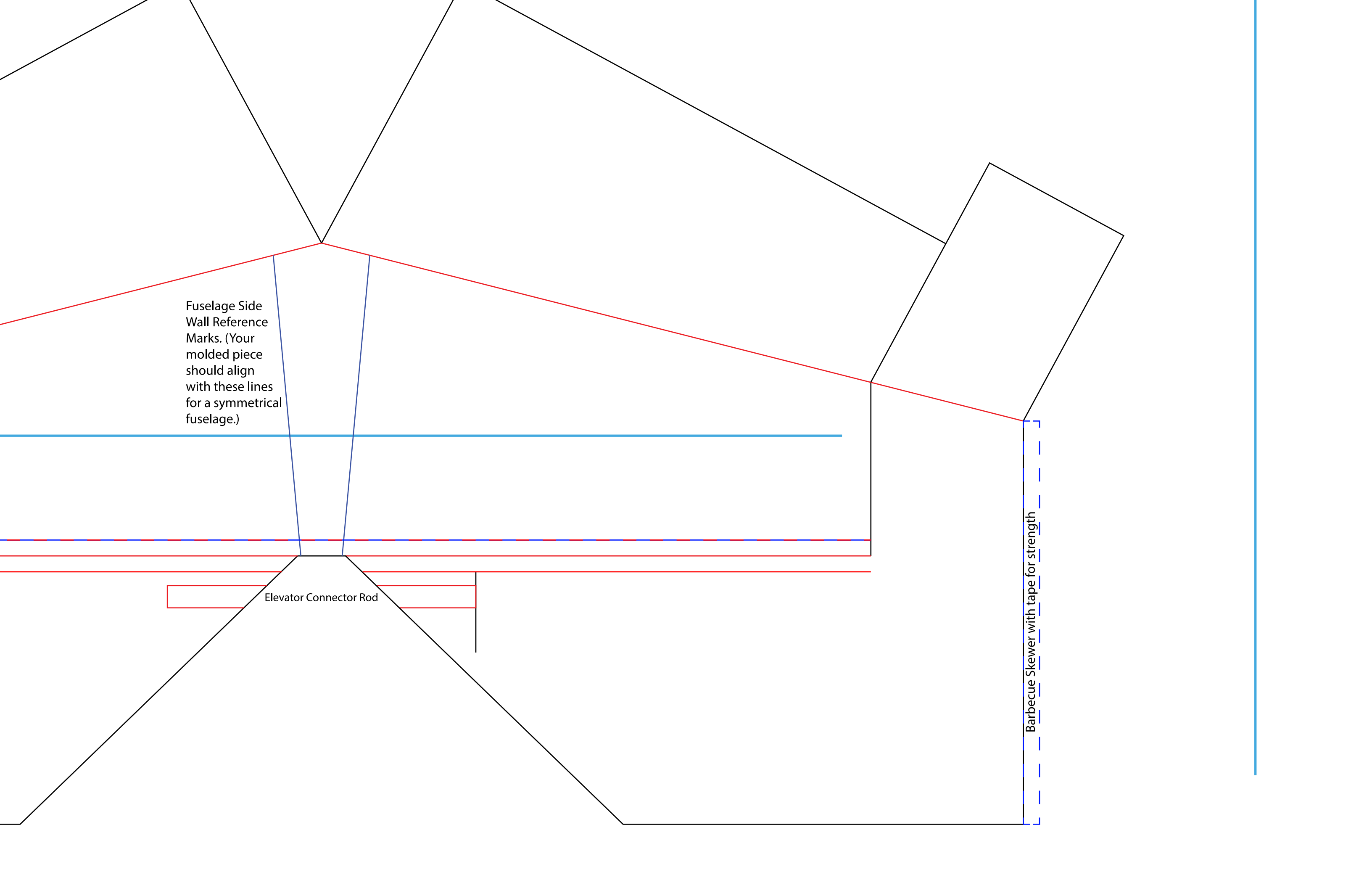
Cut this area off
after the cowling
is glued together.

Cut this area off
after the cowling
is glued together.

Cut this area off
after the cowling
is glued together.

Cut this area off
after the cowling
is glued together.





Fuselage Side Wall Reference Marks. (Your molded piece should align with these lines for a symmetrical fuselage.)

Elevator Connector Rod

Barbecue Skewer with tape for strength

Side Force Generators

