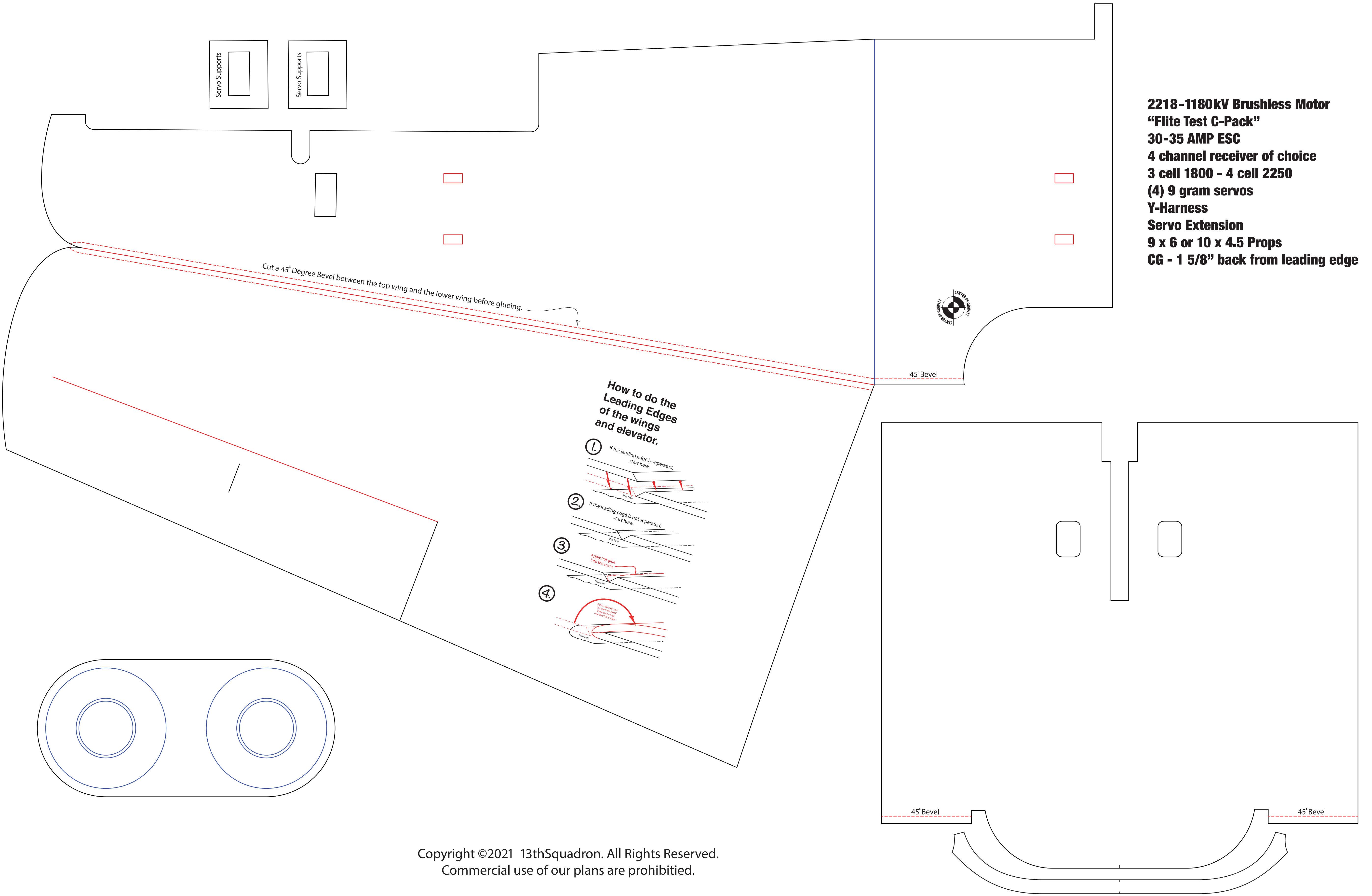
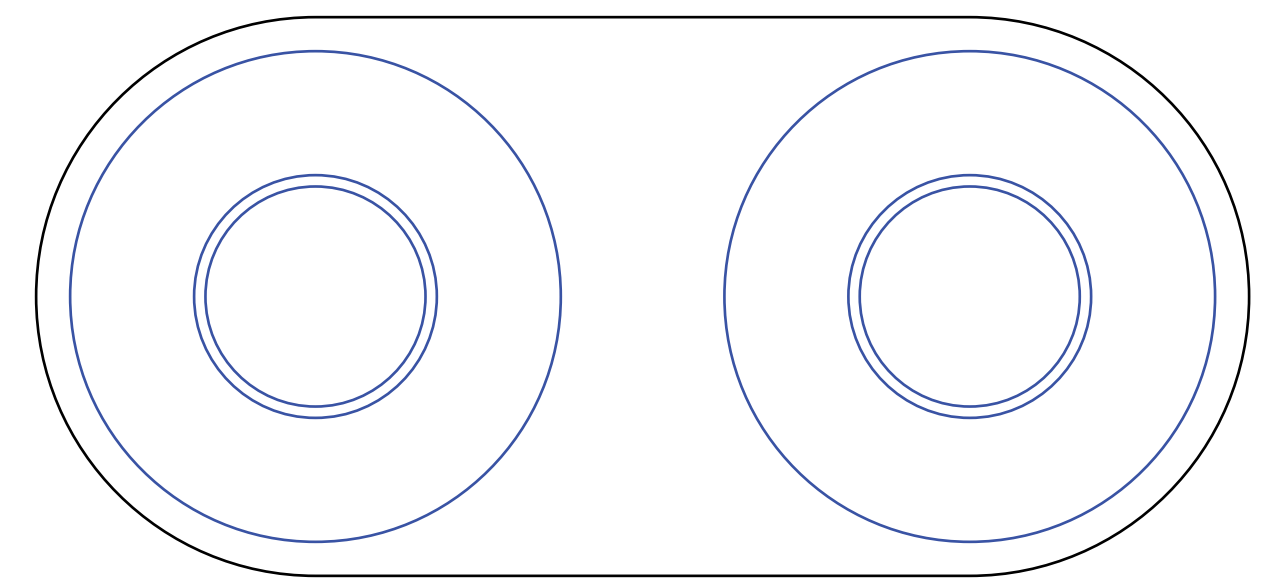
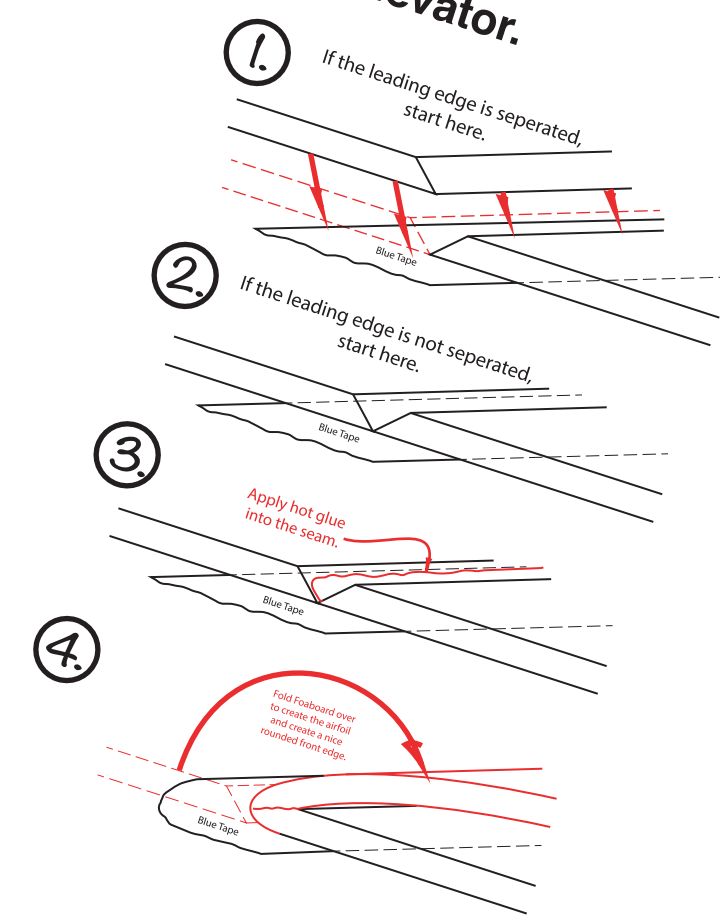


- 2218-1180kV Brushless Motor**
- "Flite Test C-Pack"**
- 30-35 AMP ESC**
- 4 channel receiver of choice**
- 3 cell 1800 - 4 cell 2250**
- (4) 9 gram servos**
- Y-Harness**
- Servo Extension**
- 9 x 6 or 10 x 4.5 Props**
- CG - 1 5/8" back from leading edge**

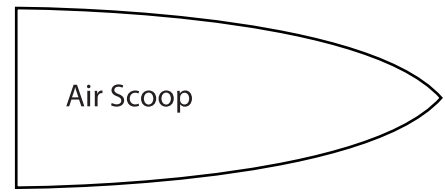
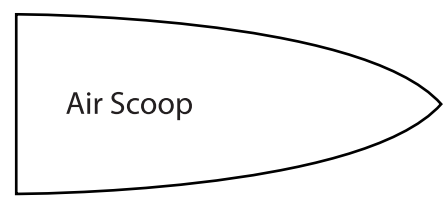


How to do the Leading Edges of the wings and elevator.

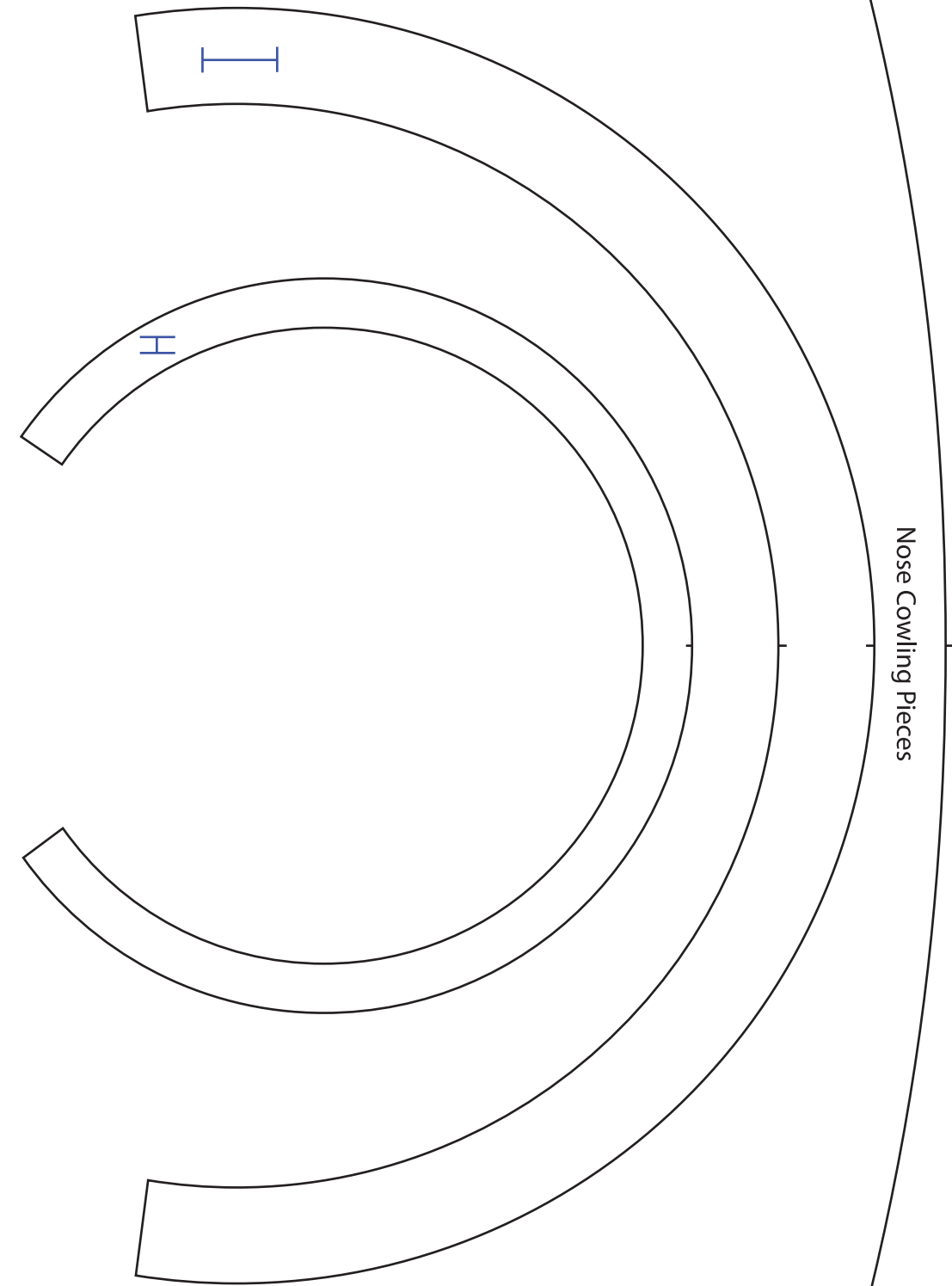


Side View of Top Air Scoop

Trim the foam here on the top piece of the Air scoop to help give it its shape.



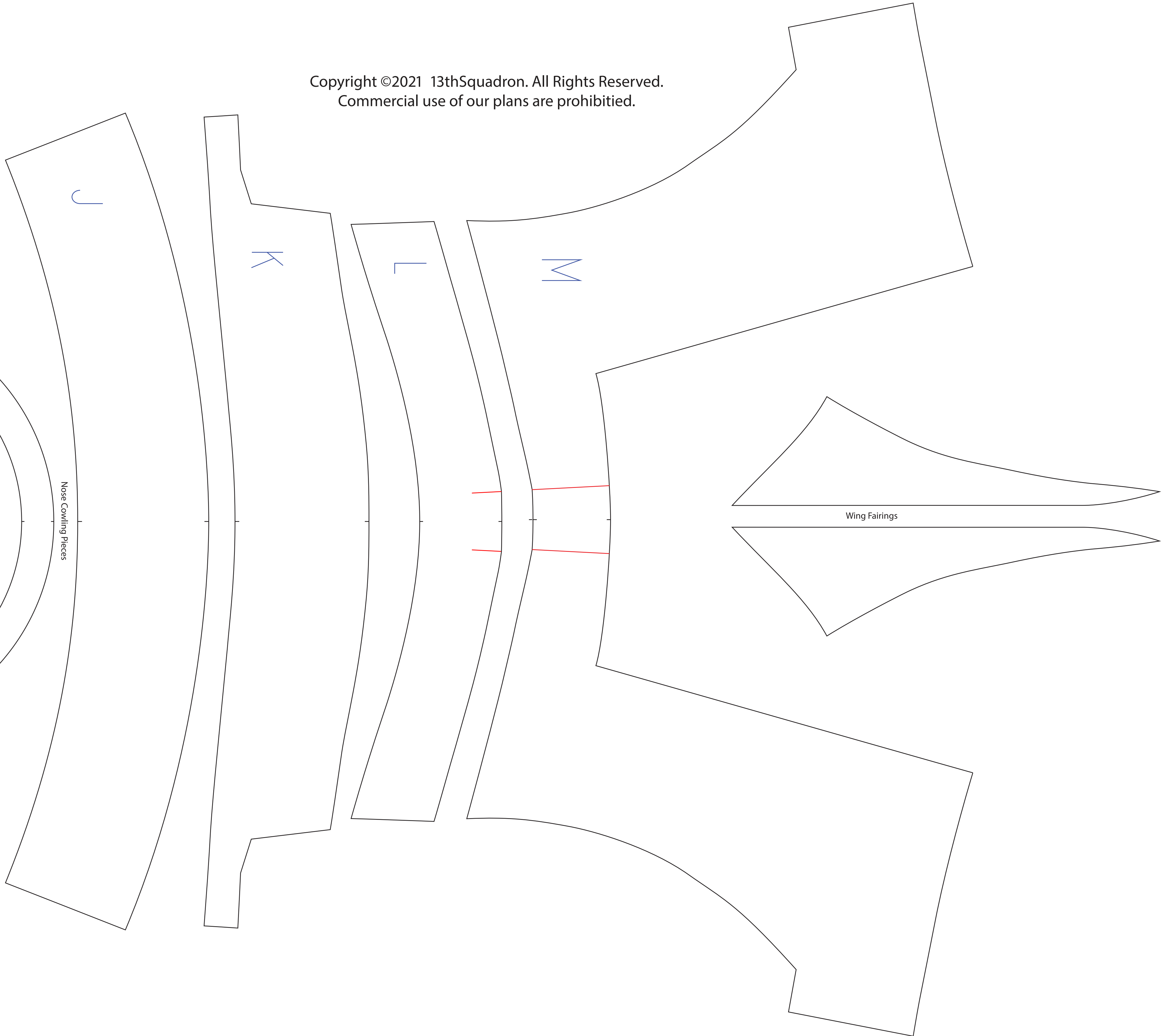
Copyright ©2021 13thSquadron. All Rights Reserved.
Commercial use of our plans are prohibited.



Nose Cowling Pieces

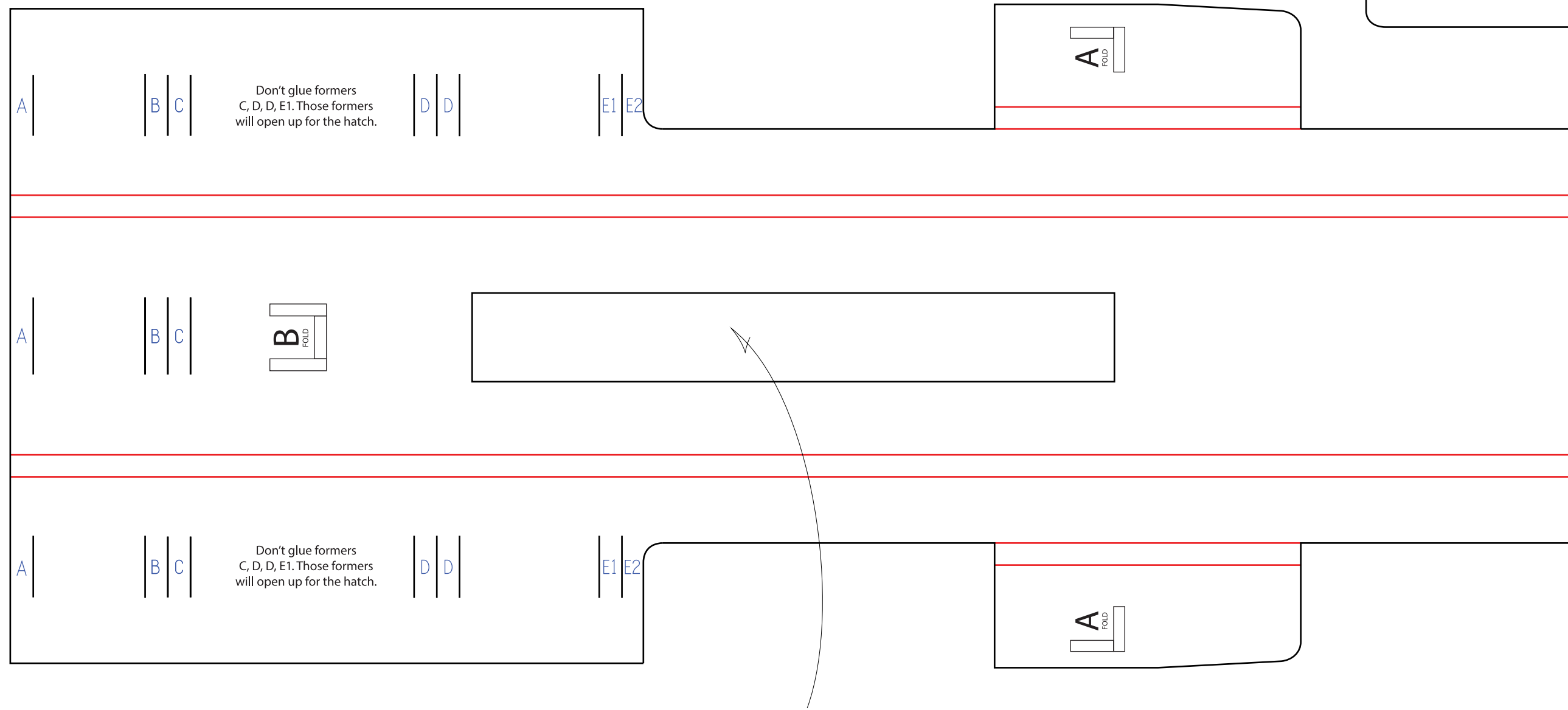
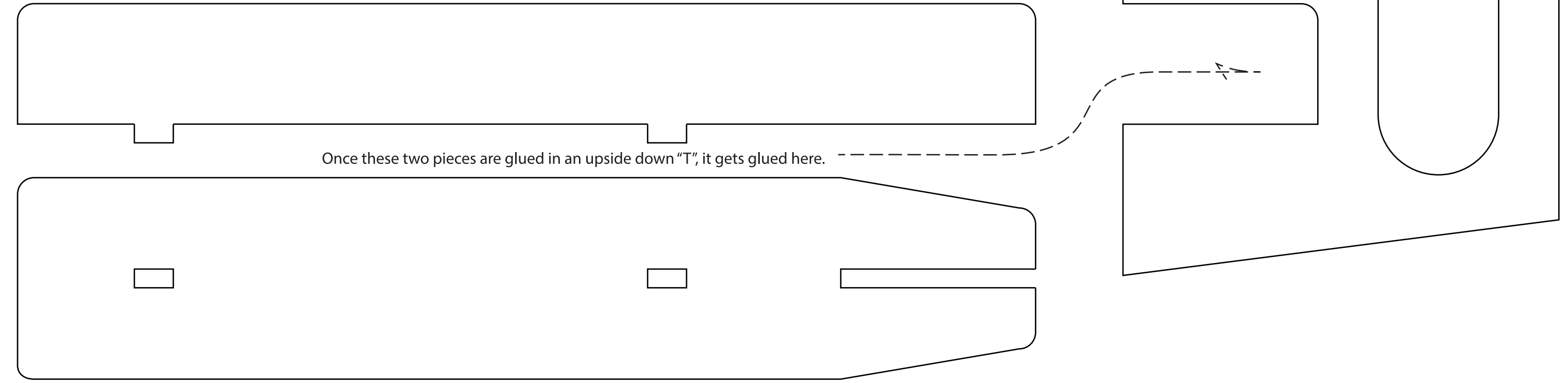


Piece needed for the Hatch

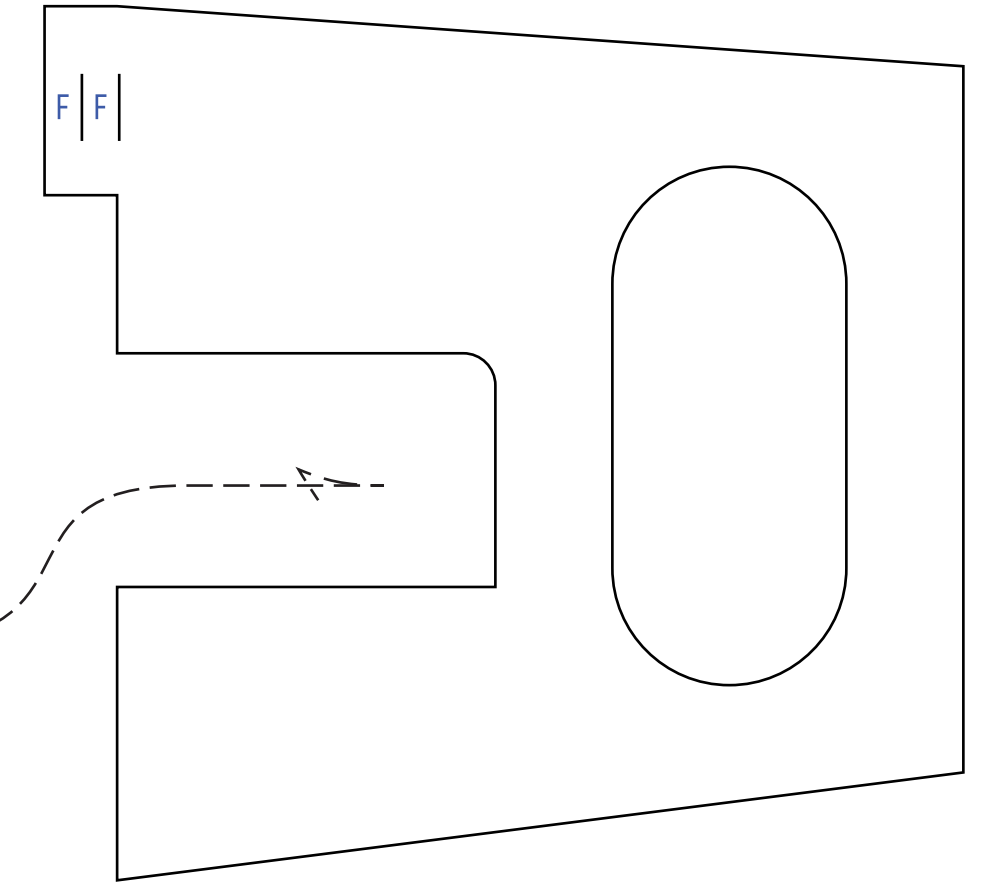
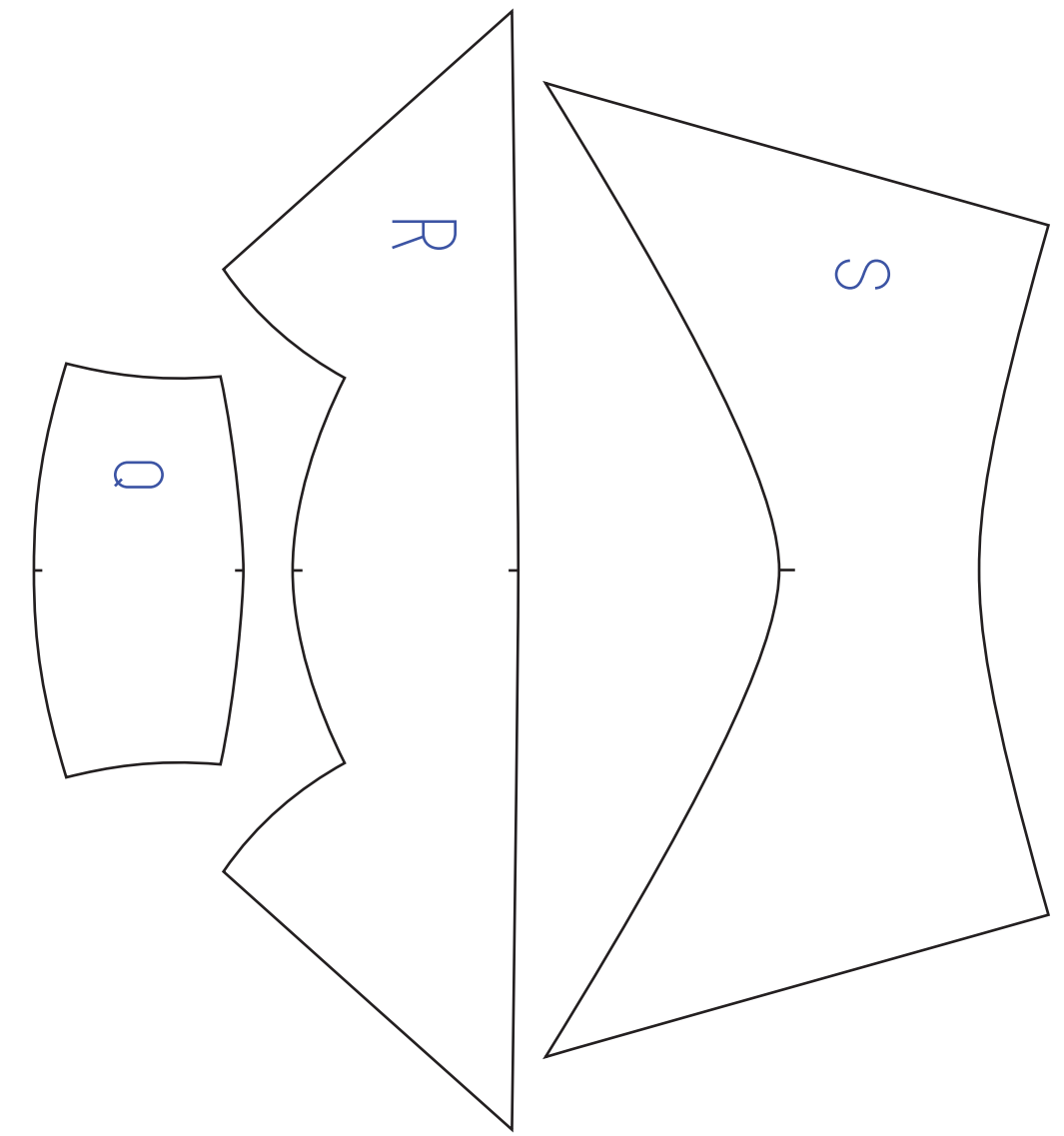
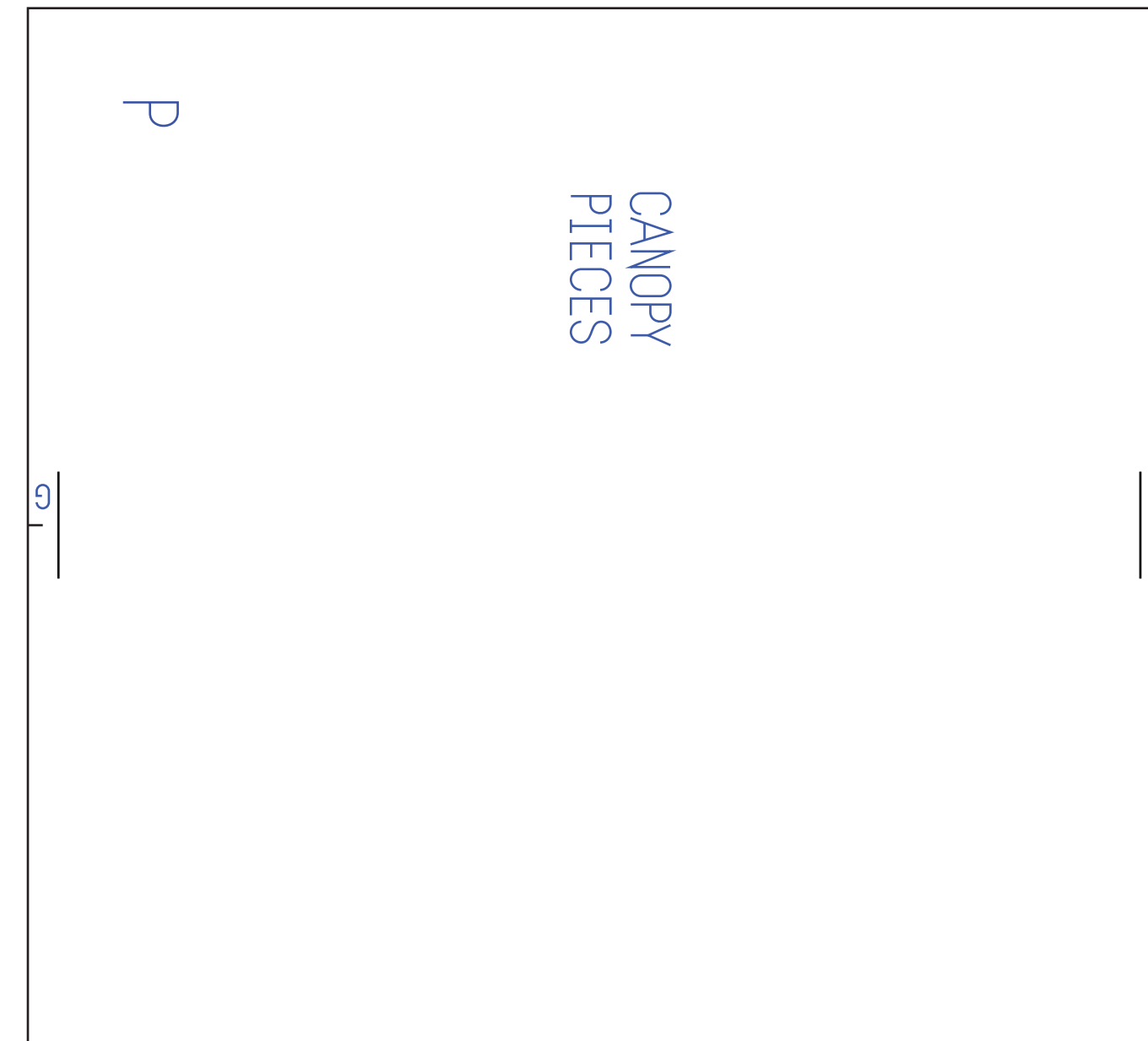
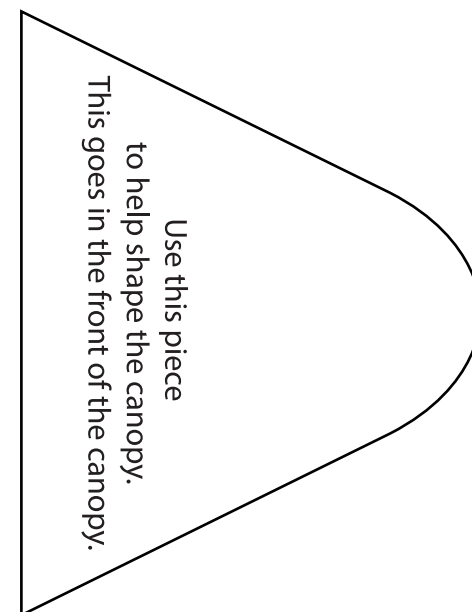
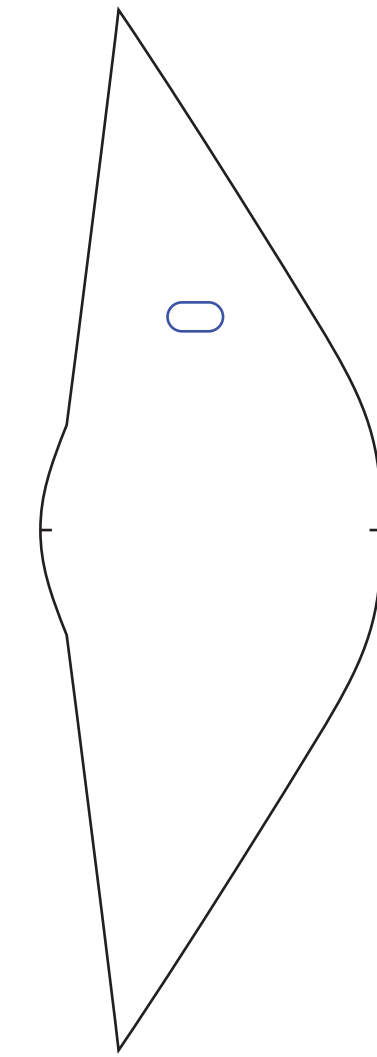
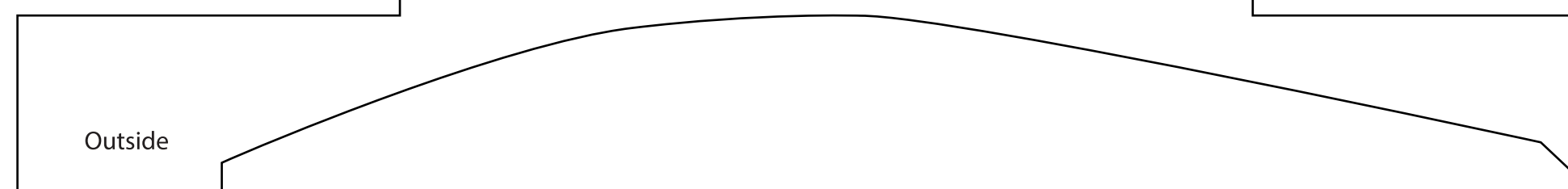
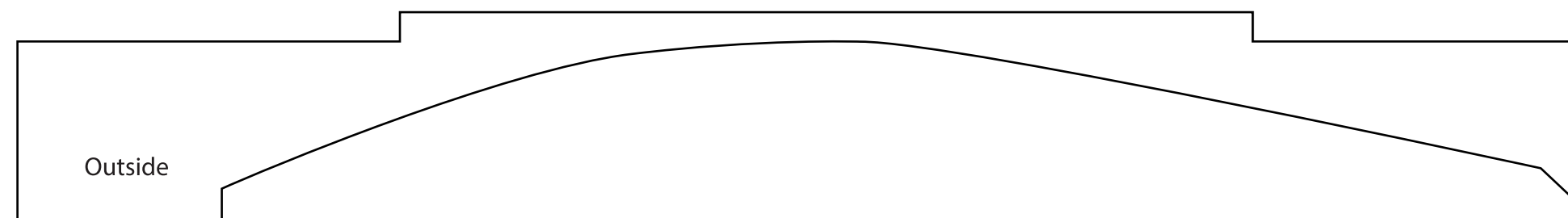
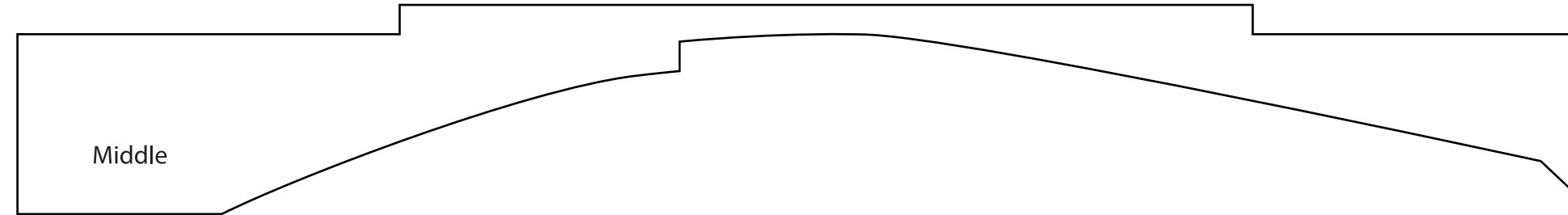
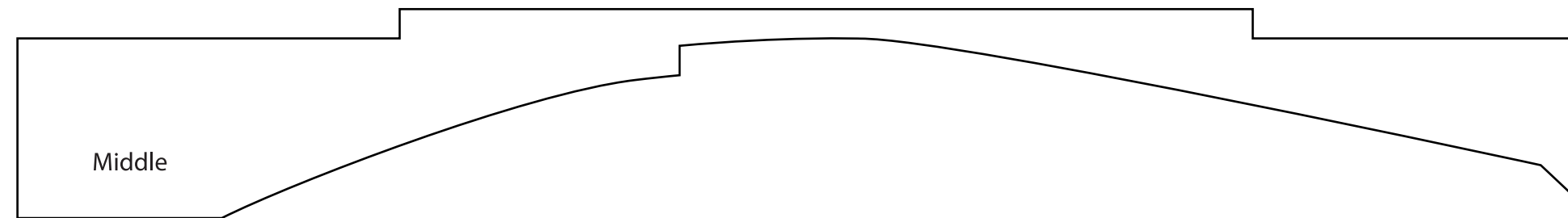


Wing Fairings

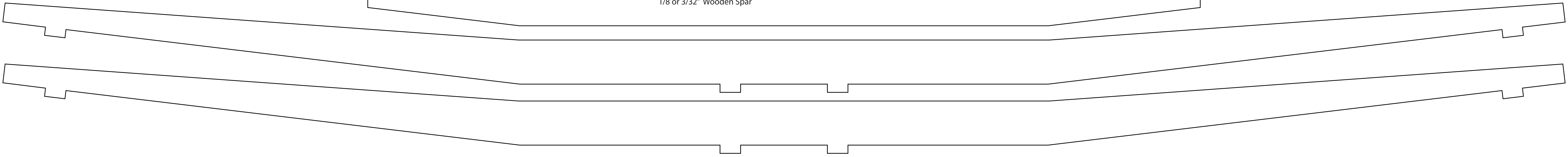
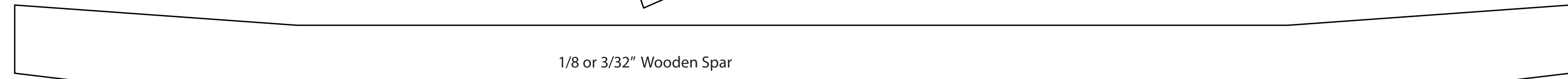
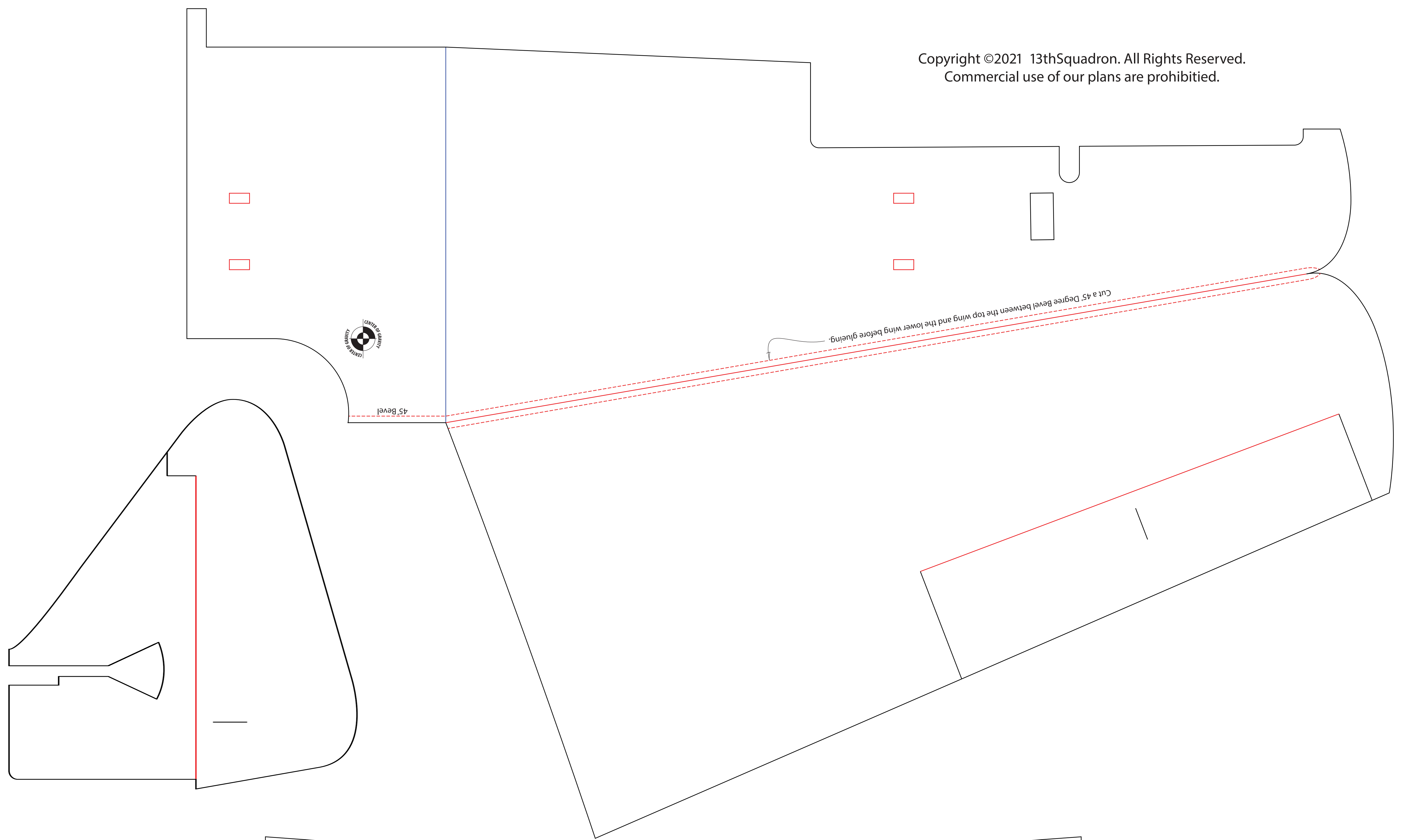
Copyright ©2021 13thSquadron. All Rights Reserved.
Commercial use of our plans are prohibited.



These pieces get glued together, and then gets glued here to the bottom of the box, to attach to the wing/airfoil.

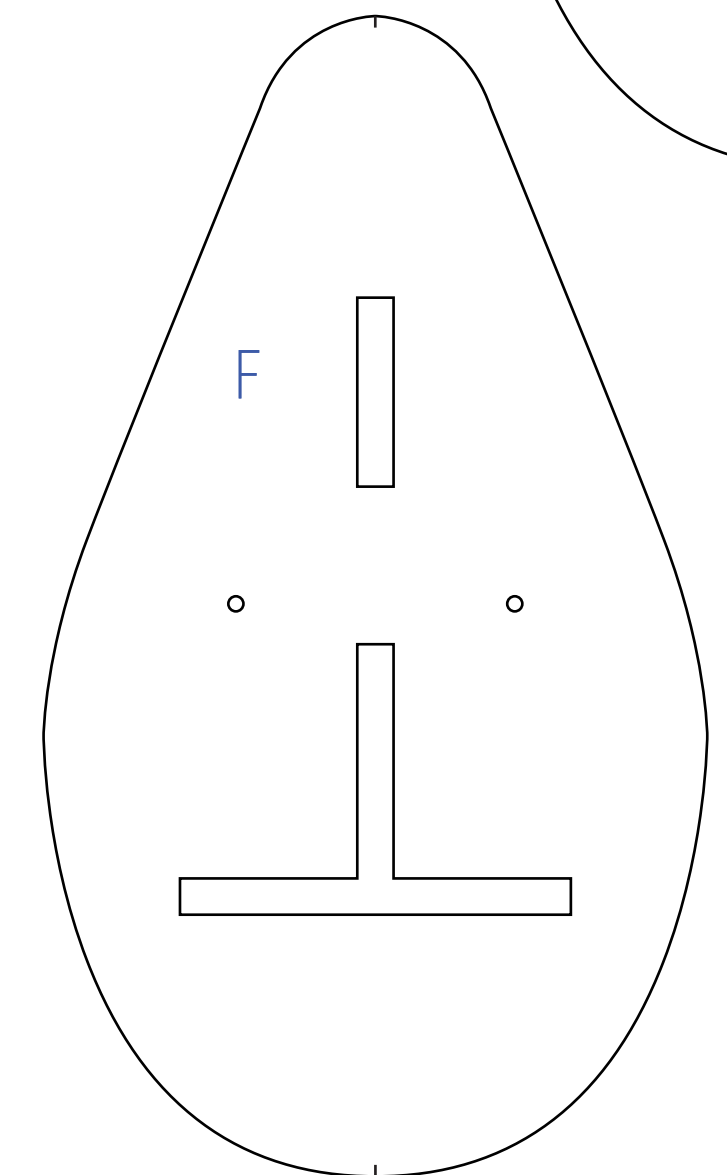
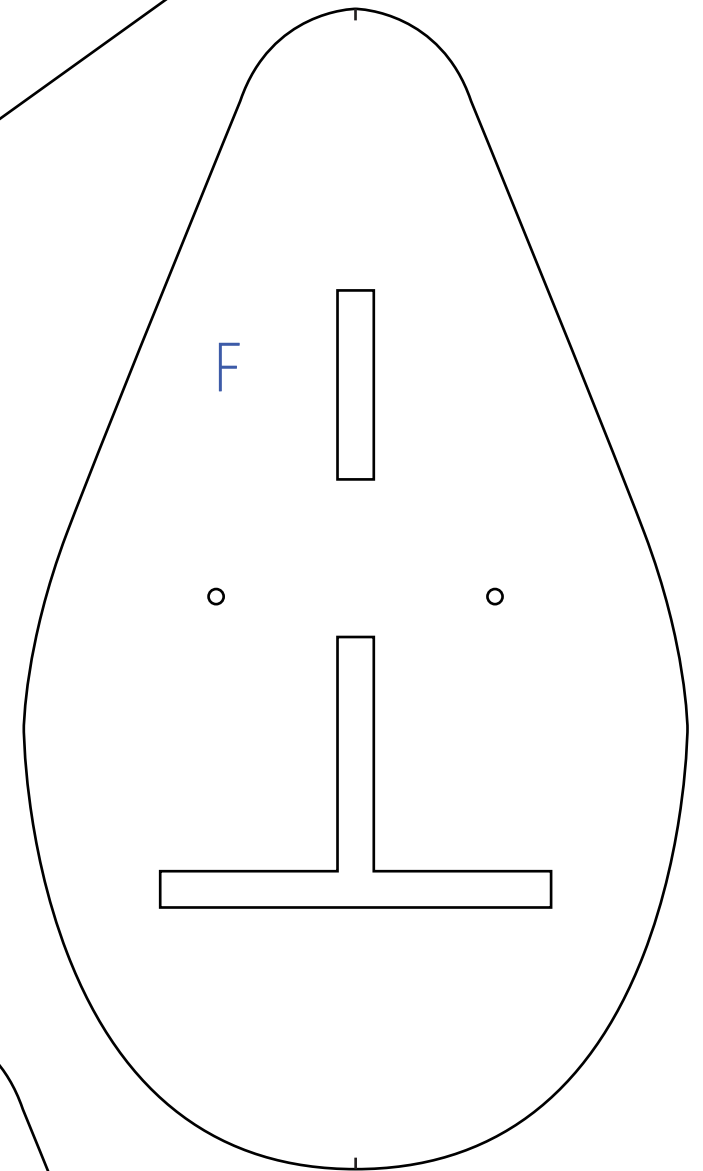
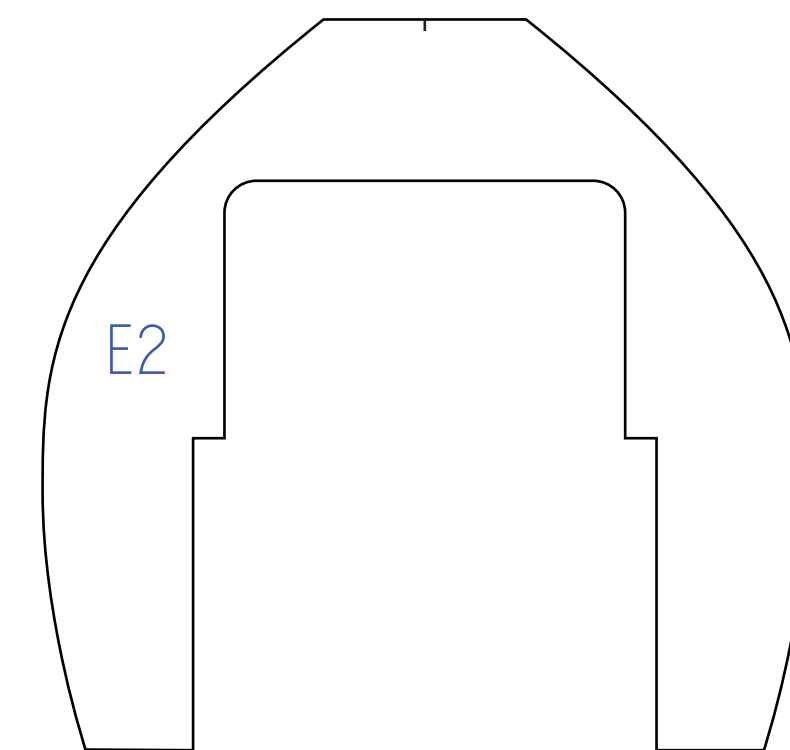
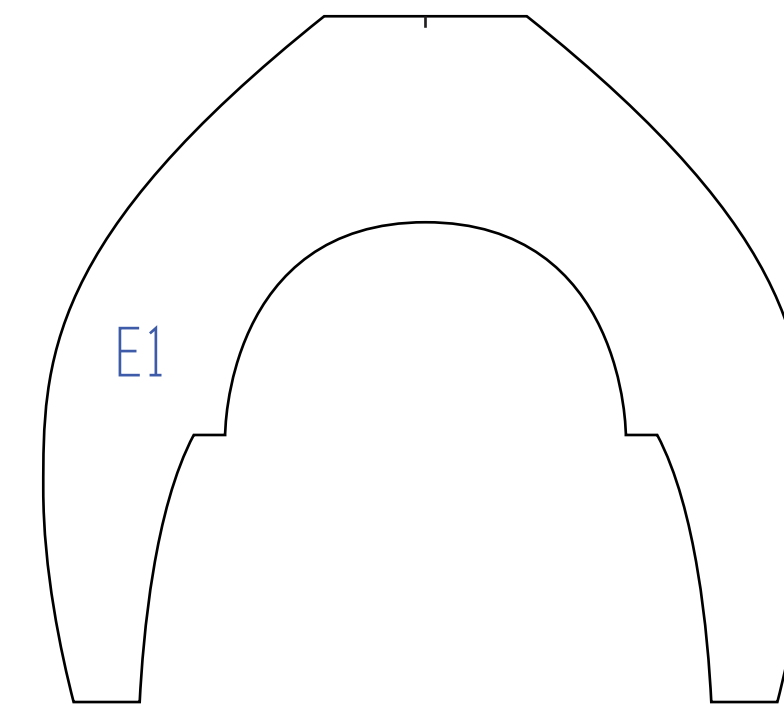
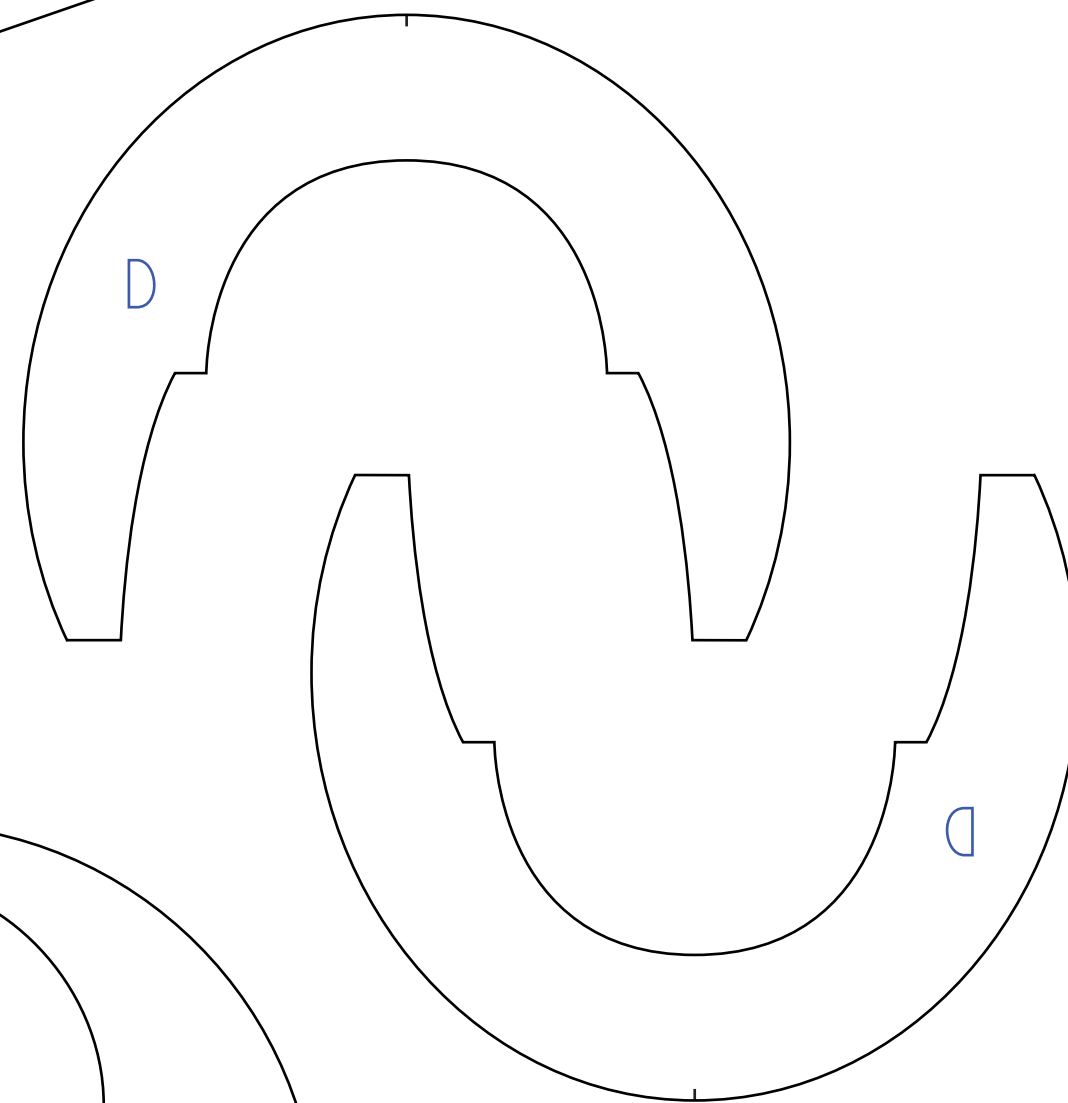
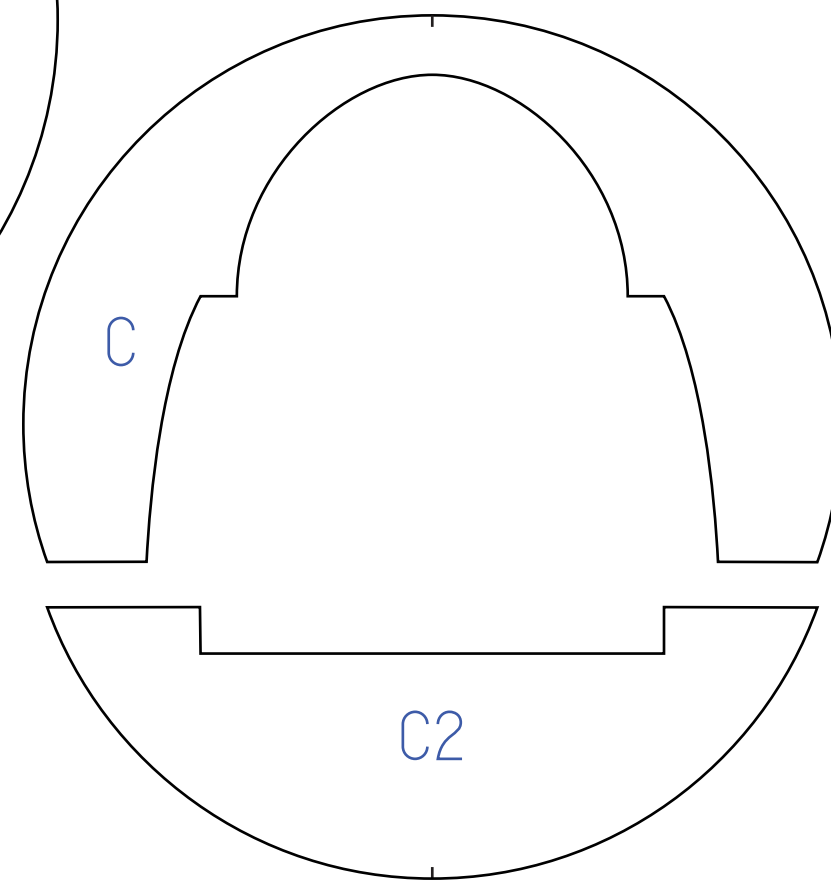
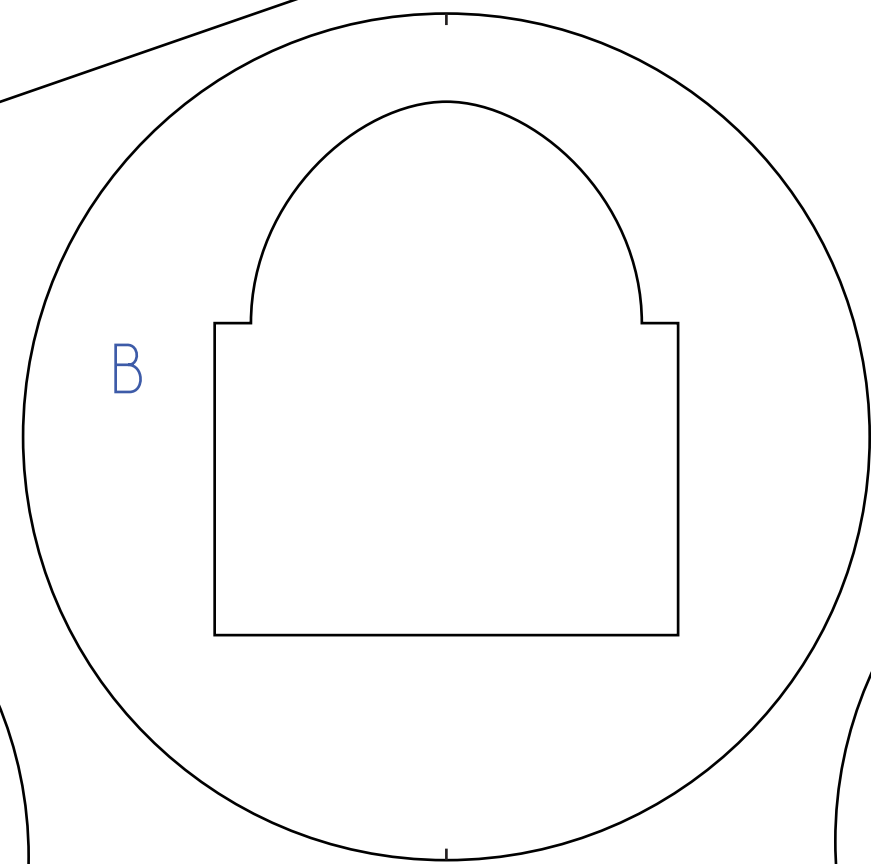
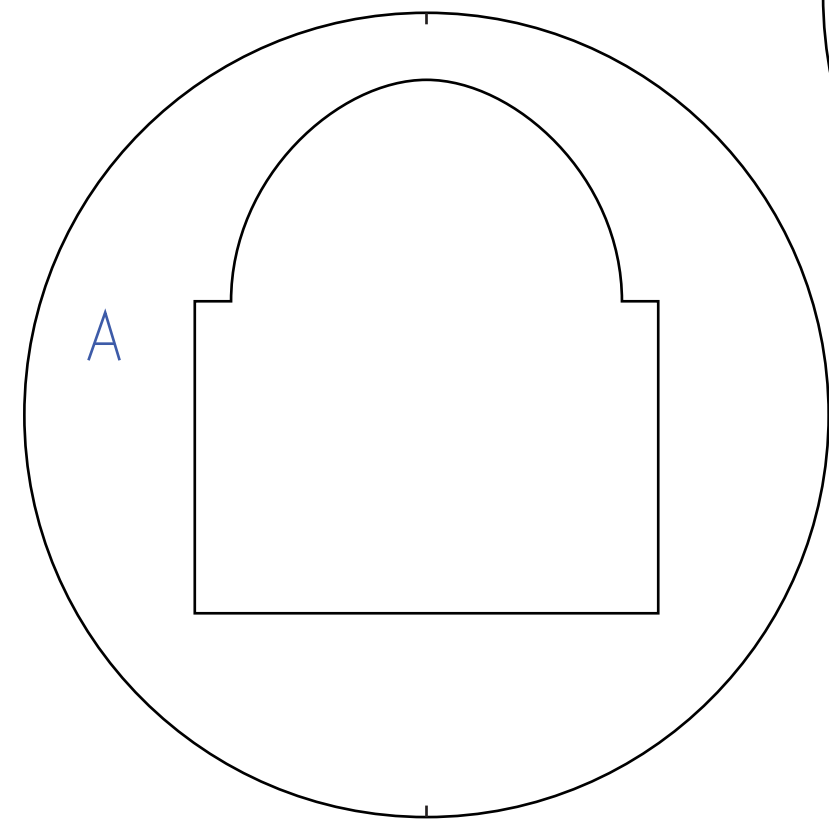
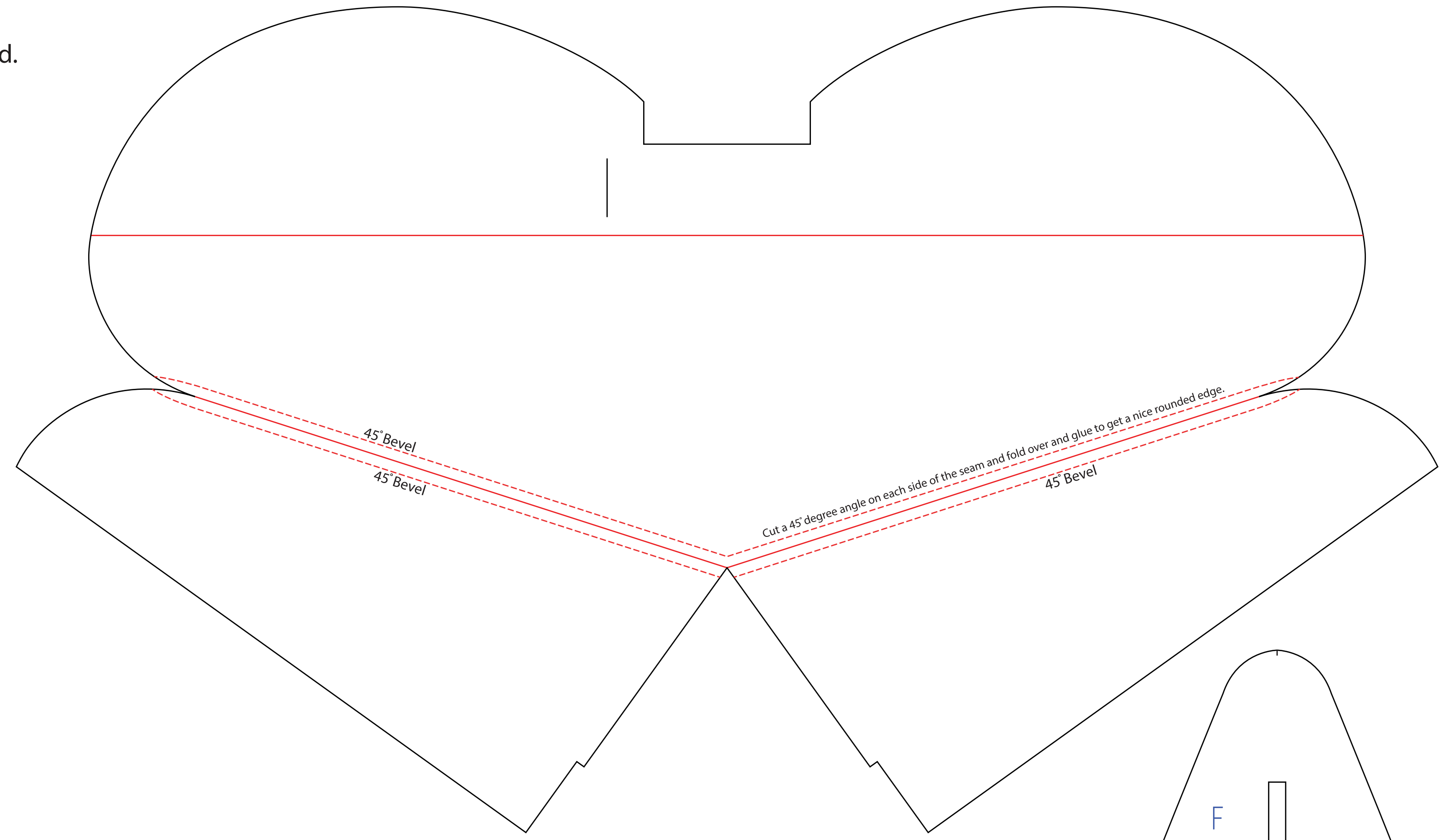
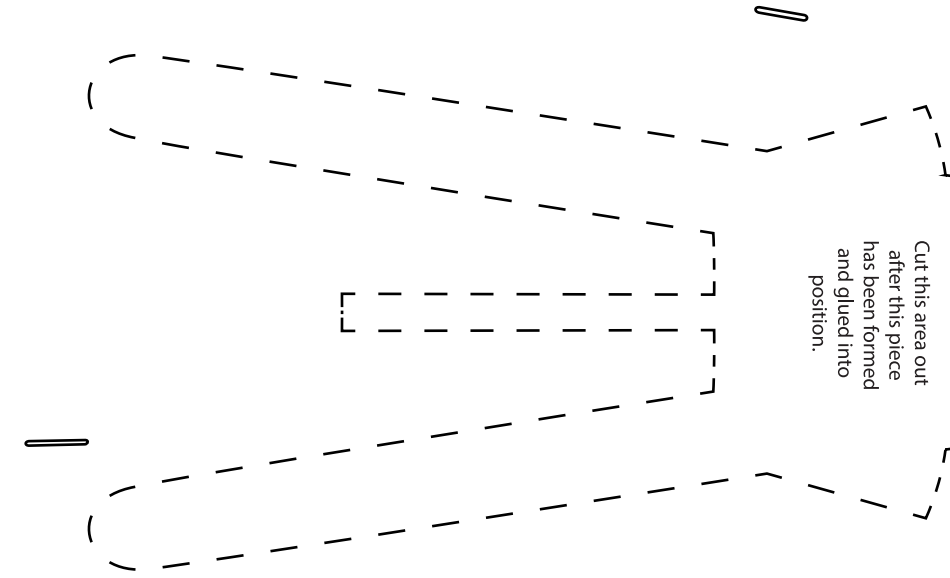


Copyright ©2021 13thSquadron. All Rights Reserved.
Commercial use of our plans are prohibited.



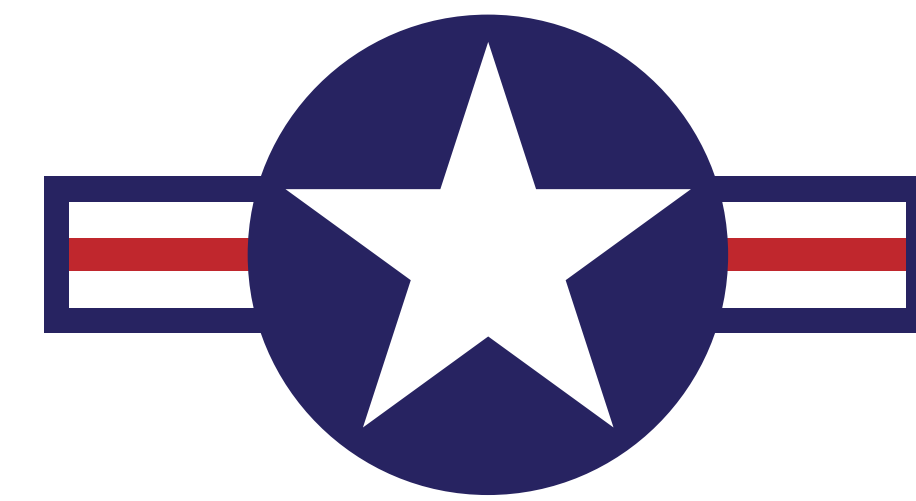
Copyright ©2021 13thSquadron. All Rights Reserved.
Commercial use of our plans are prohibited.

N



Lettering and Insignias you can use to put on your plane.

USAF
ARMY
13



JN

0123456789

ABCDEFGHIJKLMNOPQRSTUVWXYZ 1234567890

