

Cut a 45 degree angle on each side of the seam and fold over and glue to get a nice rounded edge.

How to glue the leading edges of the wings.

1. Bevel the inside leading edge of each wing.
2. Apply hot glue into the seam.
3. Fold flap over to create the arched and create a nice rounded front edge.

Notch out after wing is put together

Notch out after wing is put together

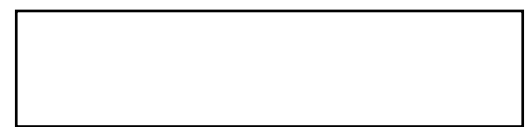
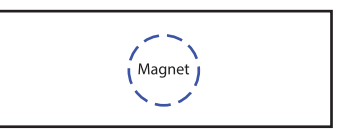
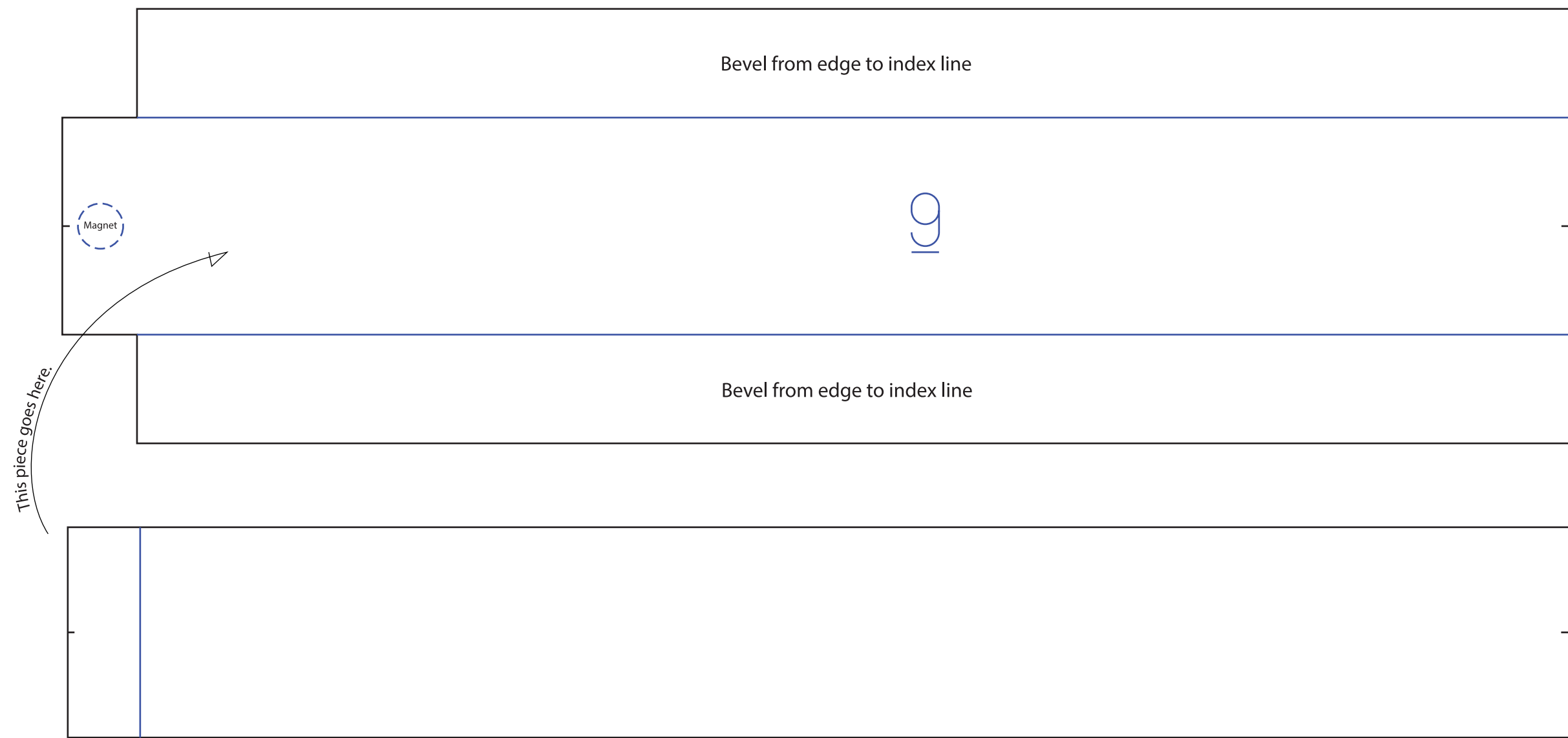
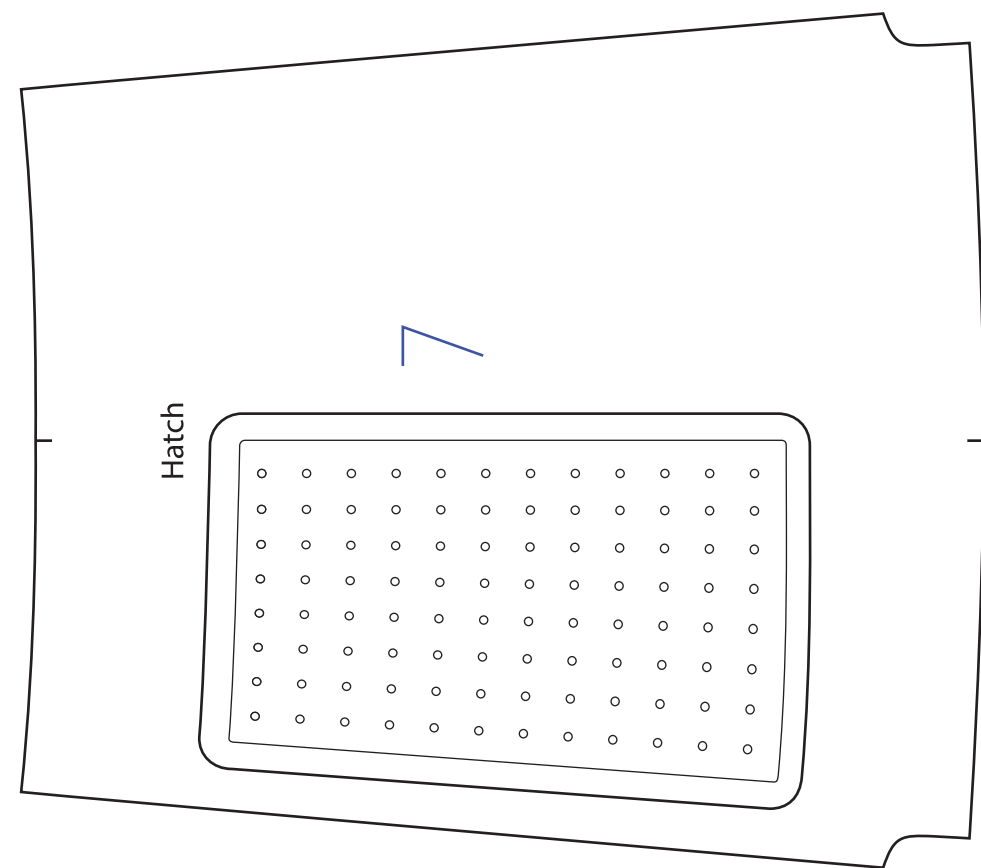
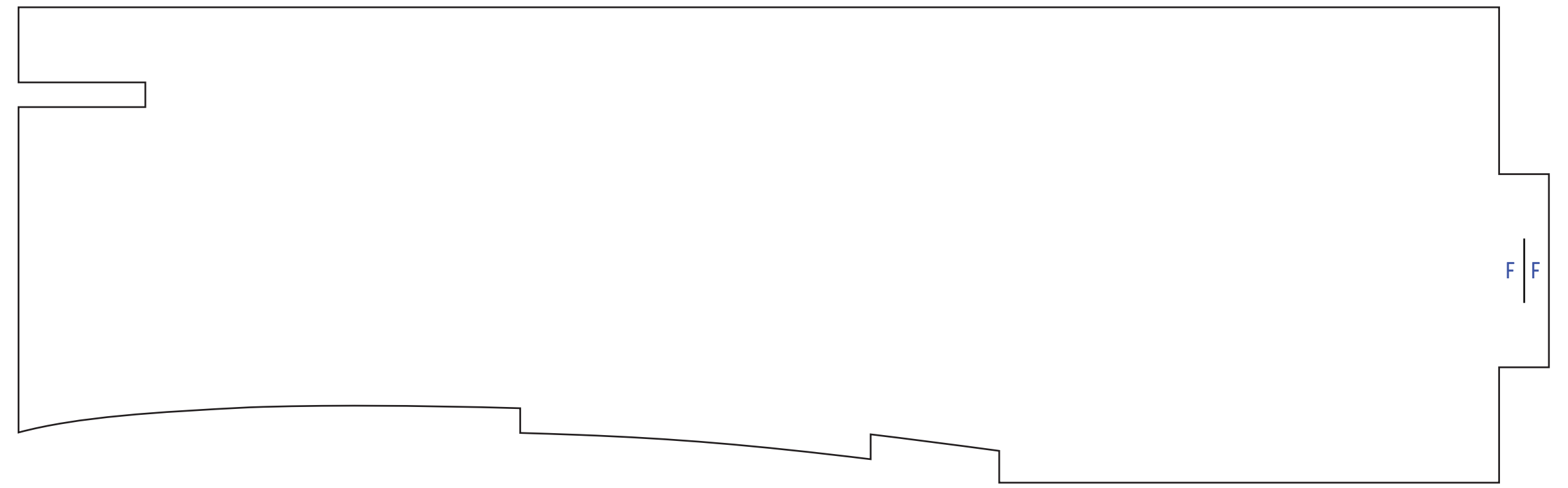
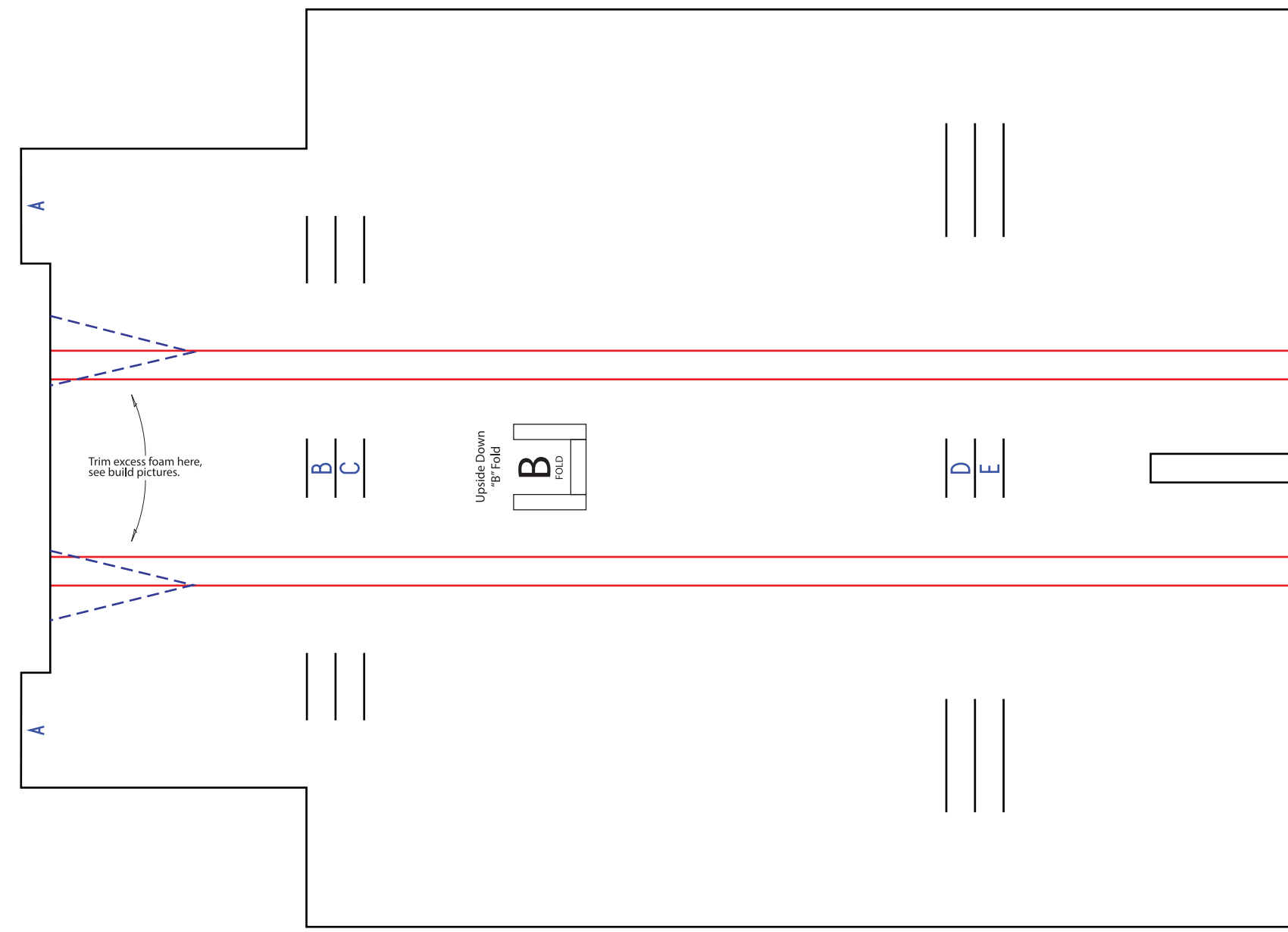
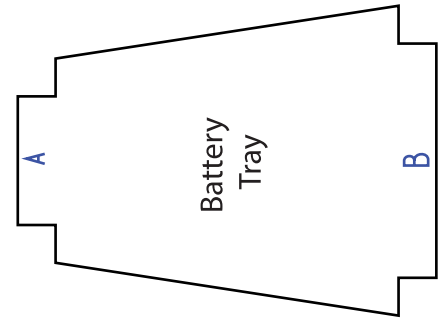
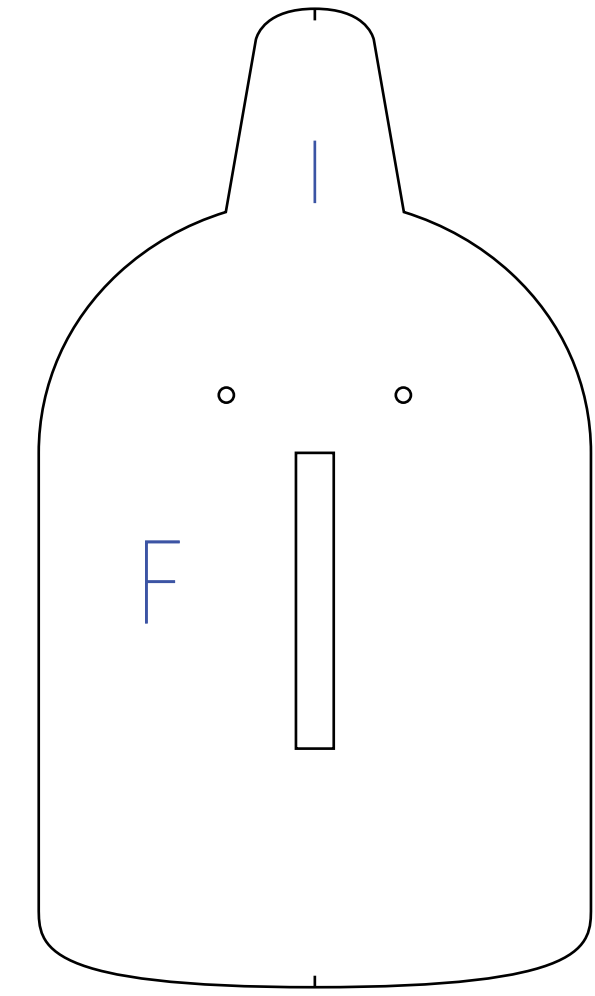
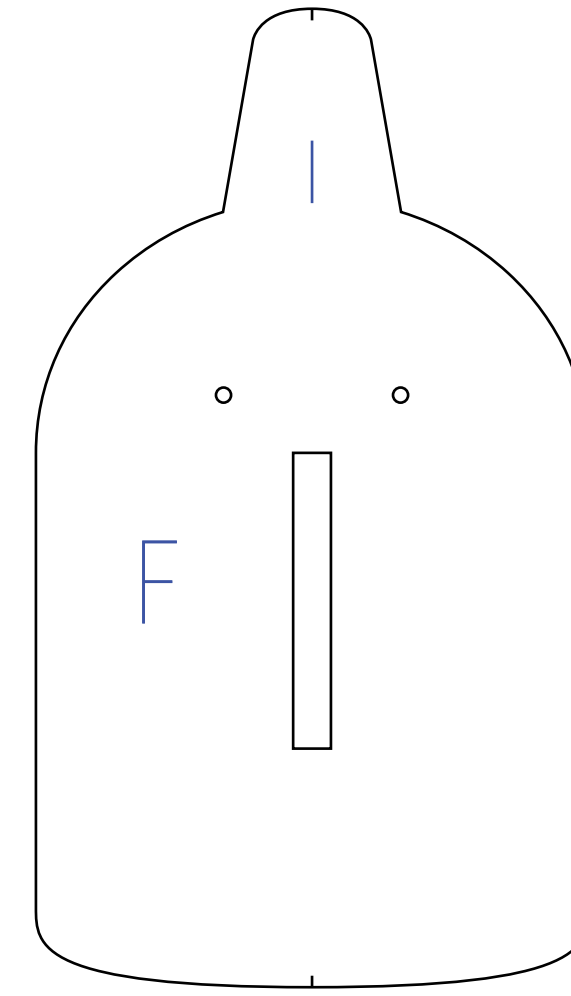
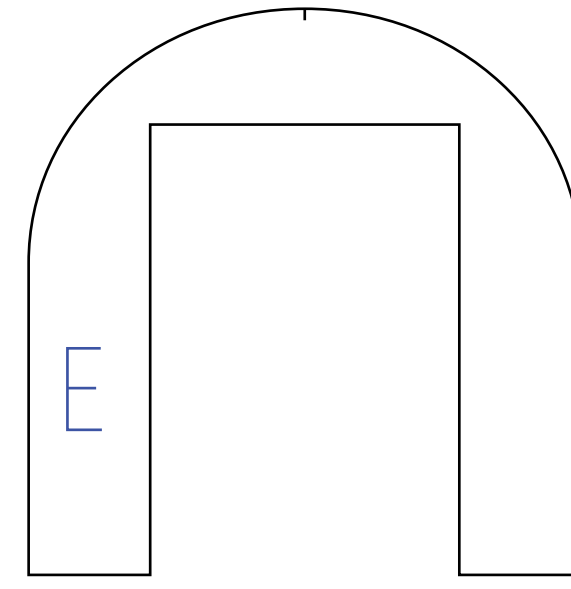
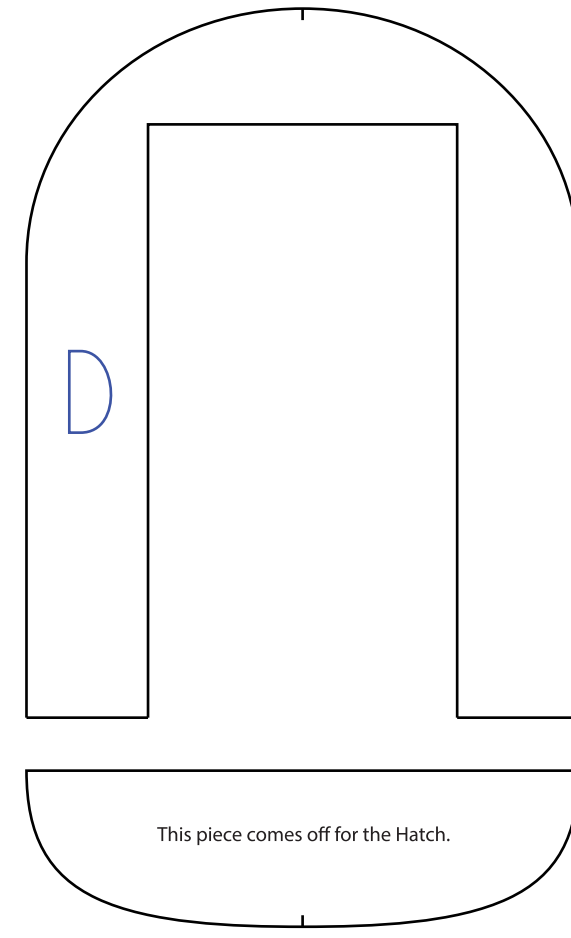
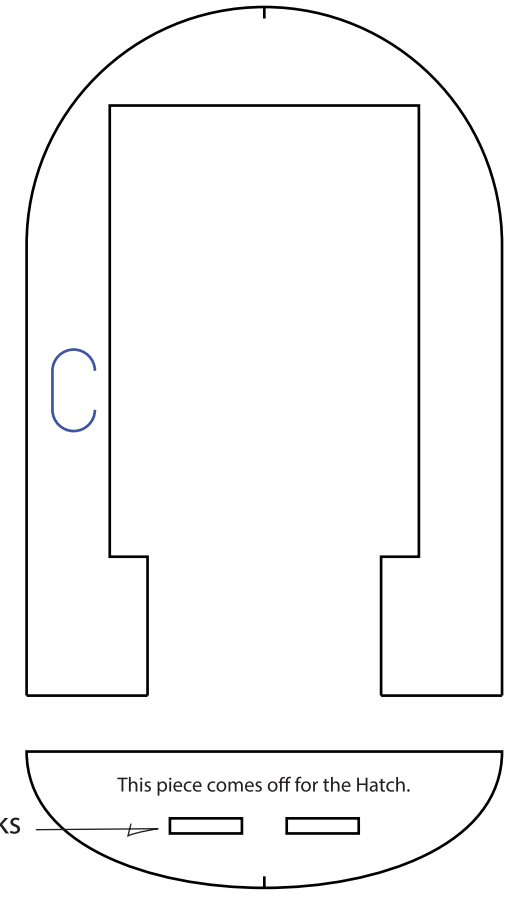
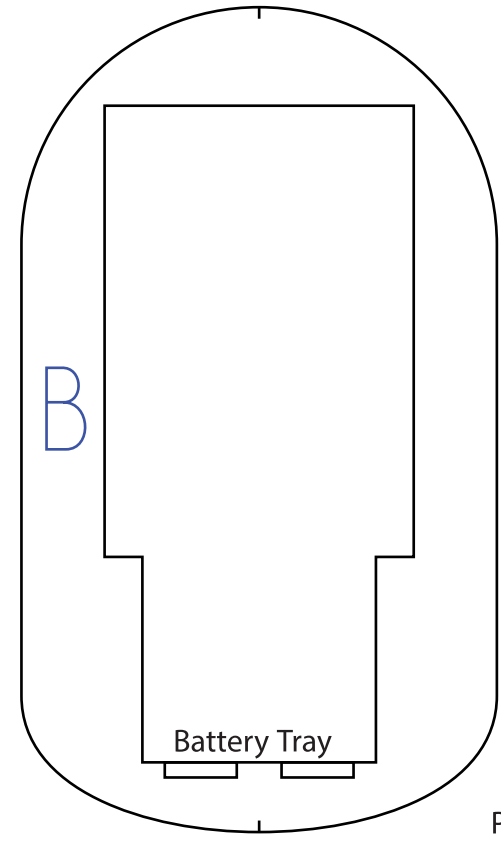
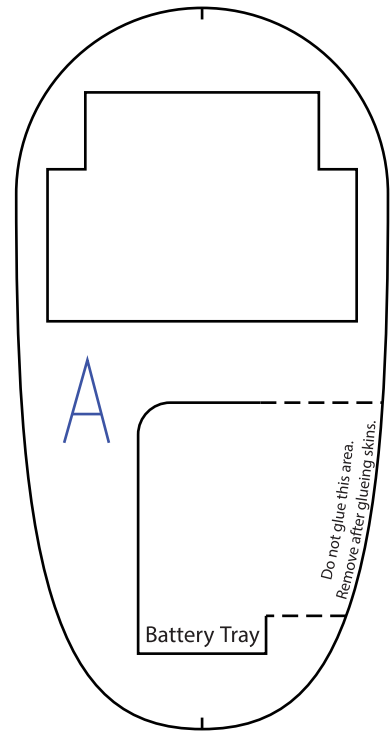
Cut a 45 degree angle on each side of the seam and fold over and glue to get a nice rounded edge.

Wing Spar

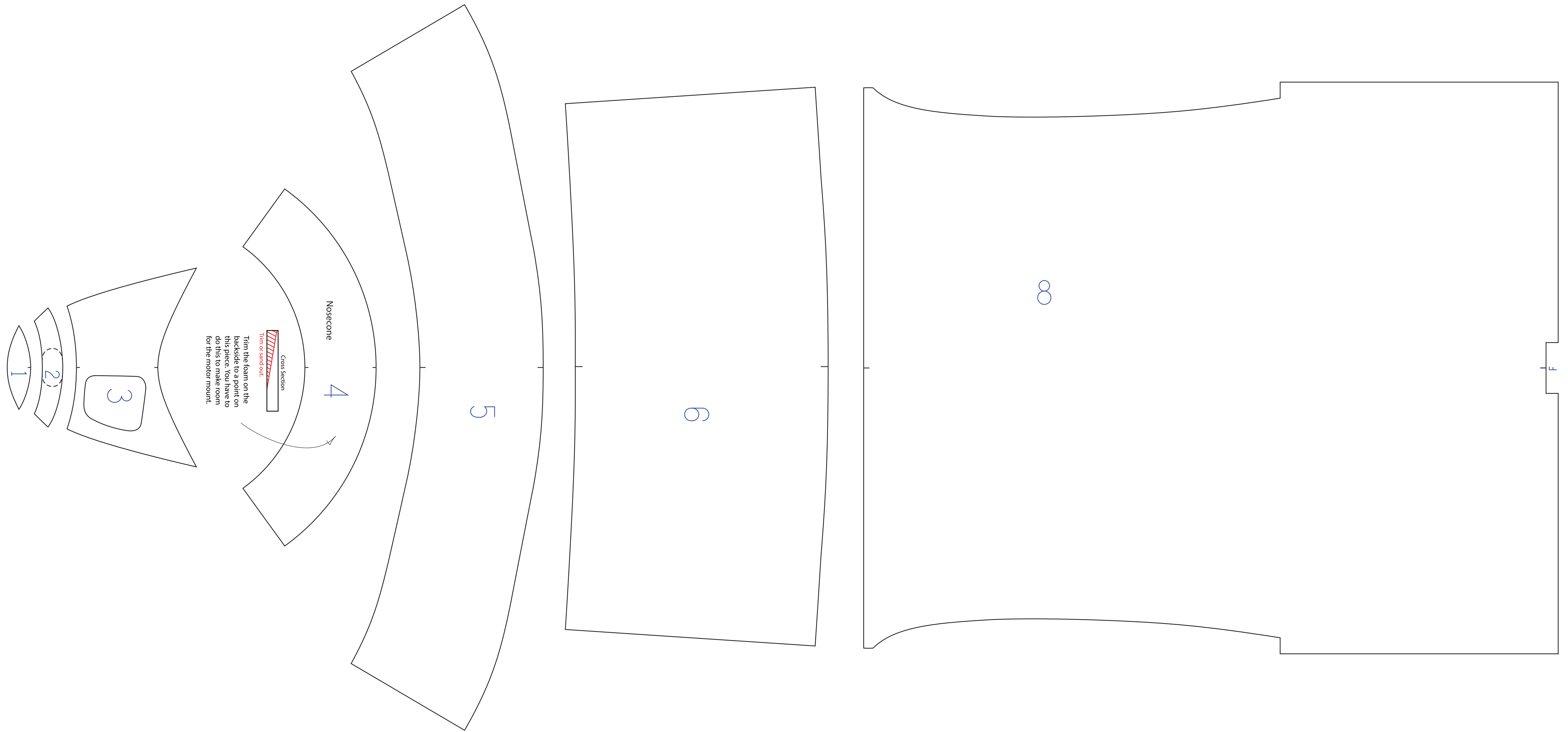
Servo Placement

Servo Placement

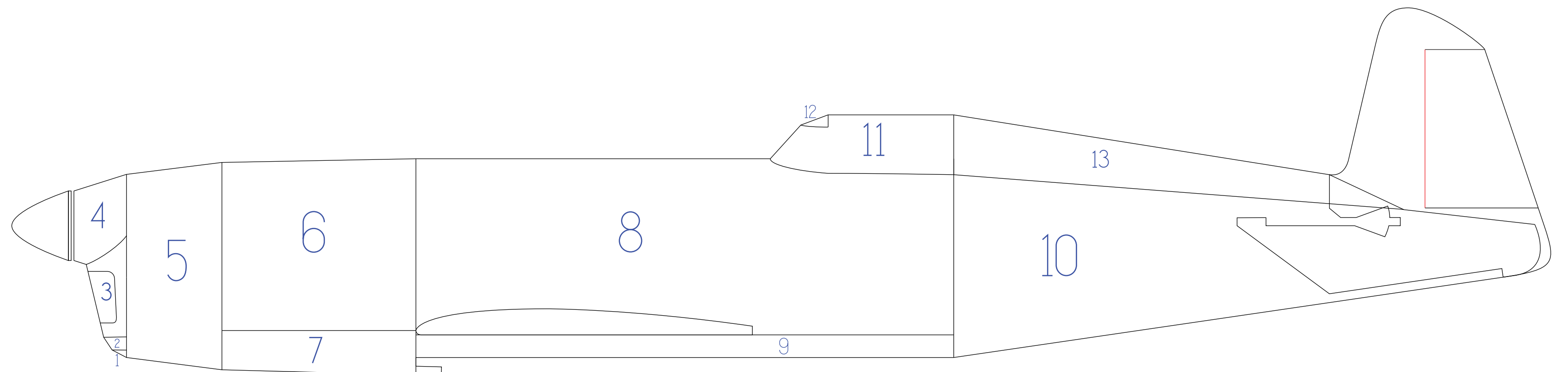
Wing Spar



Popsicle stick reinforcer
(Look at build photos for reference)

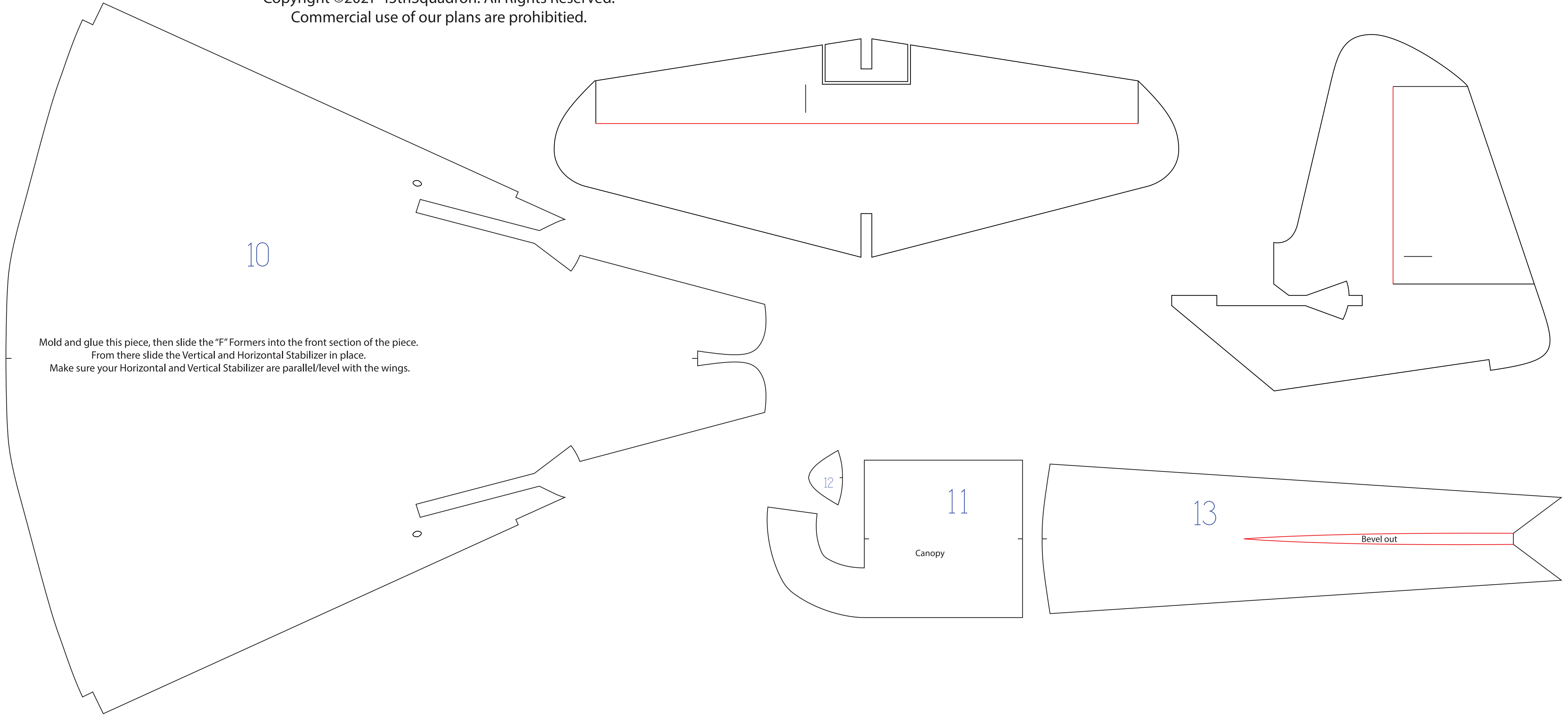


Copyright ©2021 13thSquadron. All Rights Reserved.
 Commercial use of our plans are prohibited.



Parts Guide

Copyright ©2021 13thSquadron. All Rights Reserved.
Commercial use of our plans are prohibited.



10

Mold and glue this piece, then slide the "F" Formers into the front section of the piece.
From there slide the Vertical and Horizontal Stabilizer in place.
Make sure your Horizontal and Vertical Stabilizer are parallel/level with the wings.

12

11

Canopy

13

Bevel out