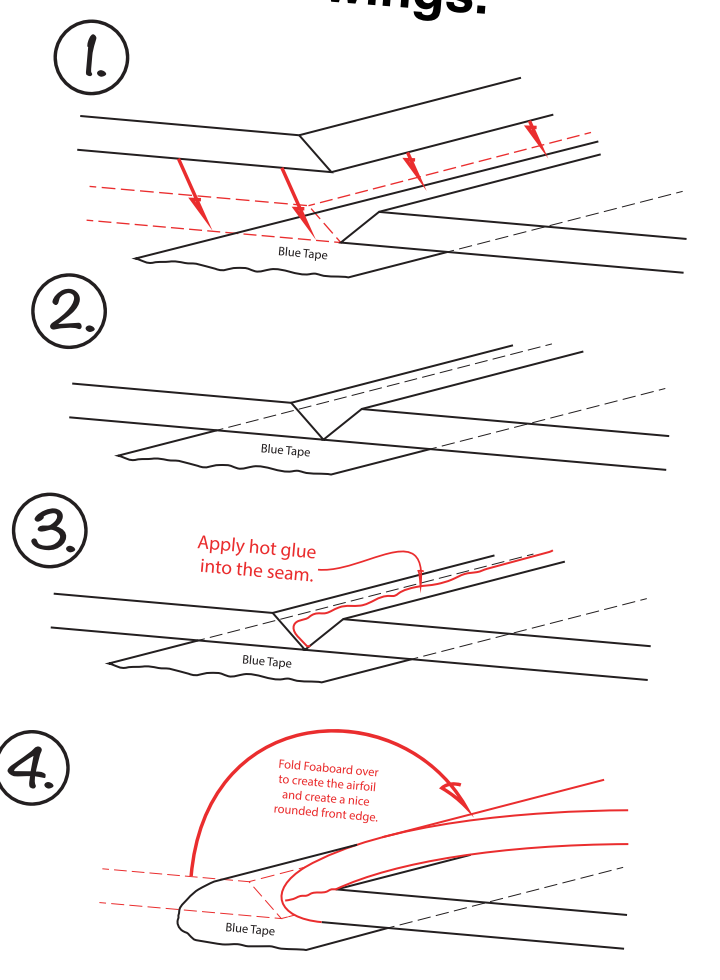
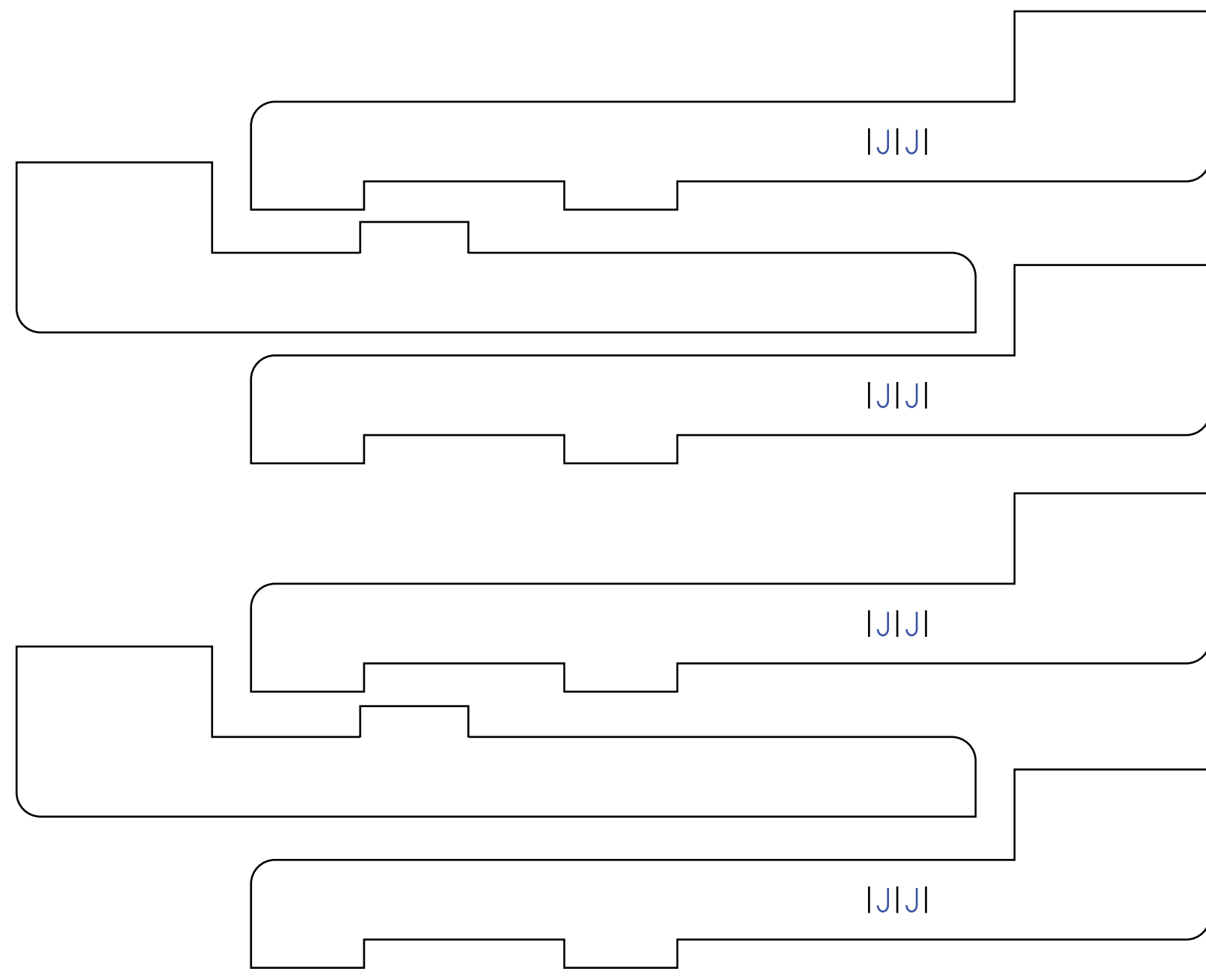


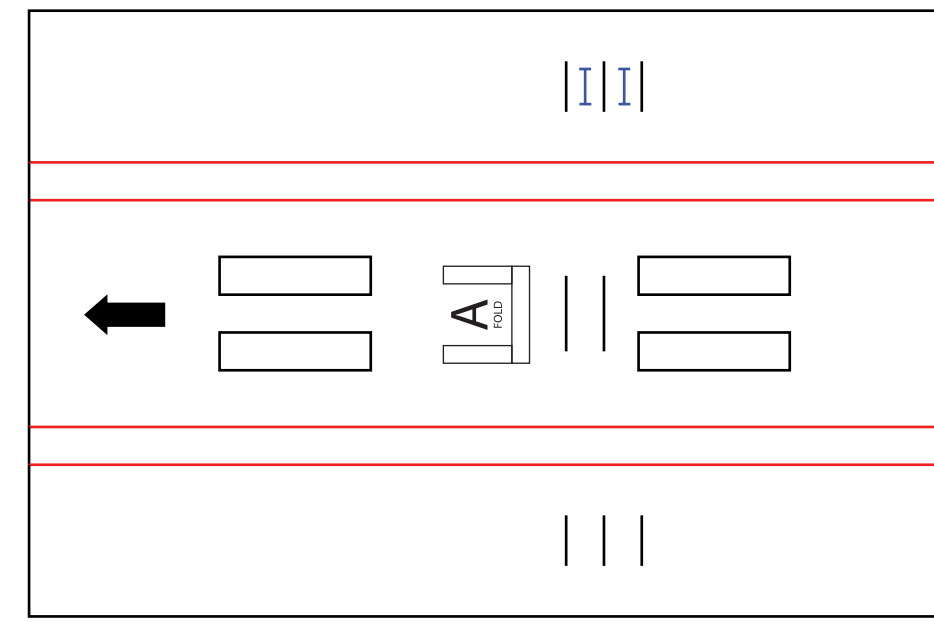
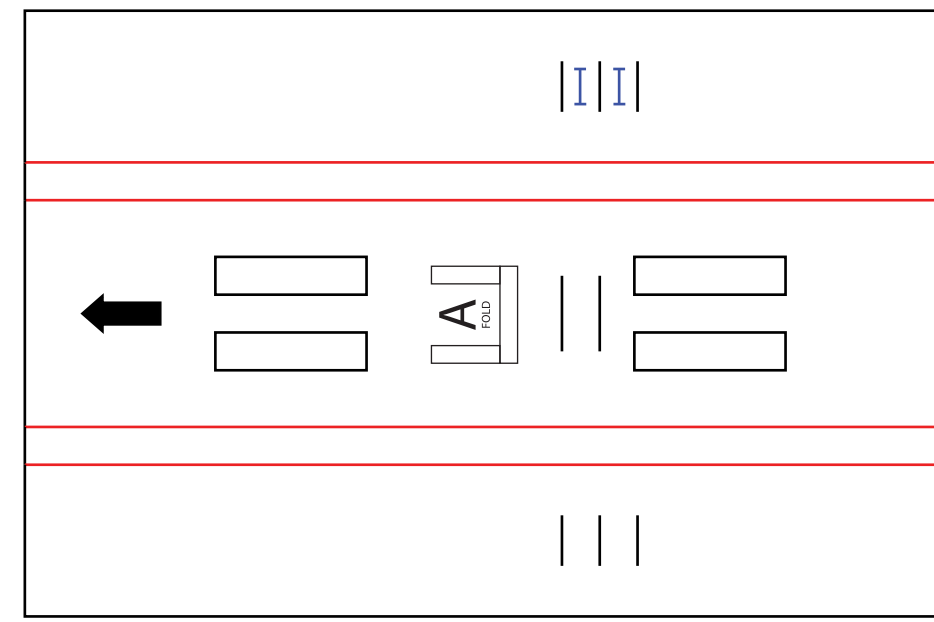
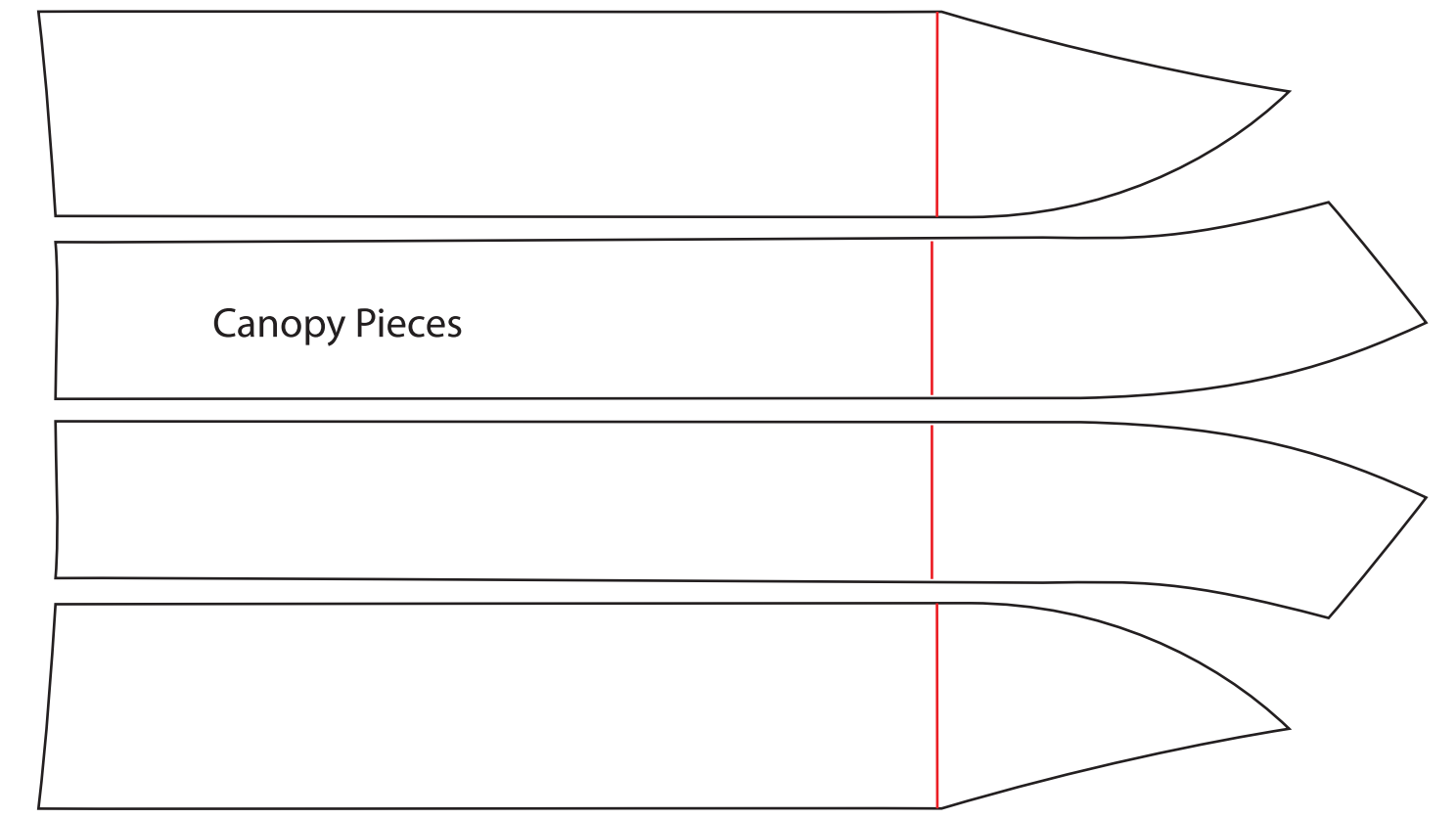
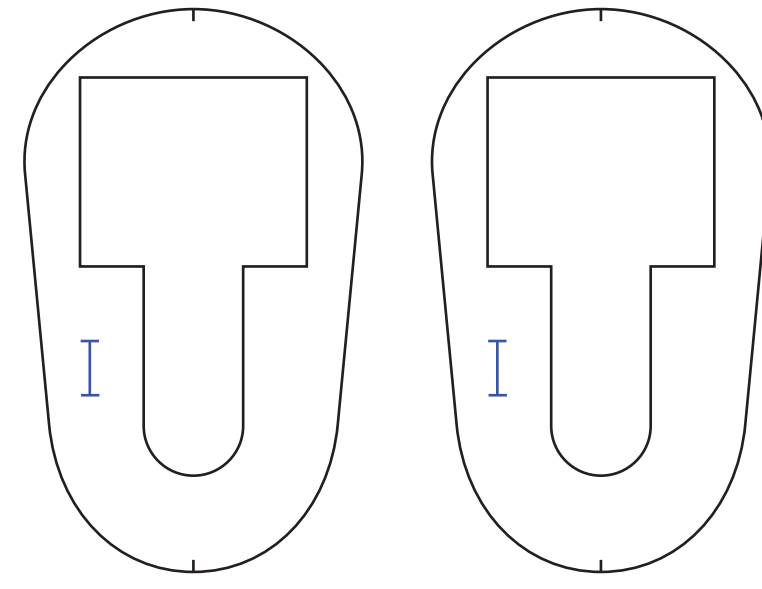
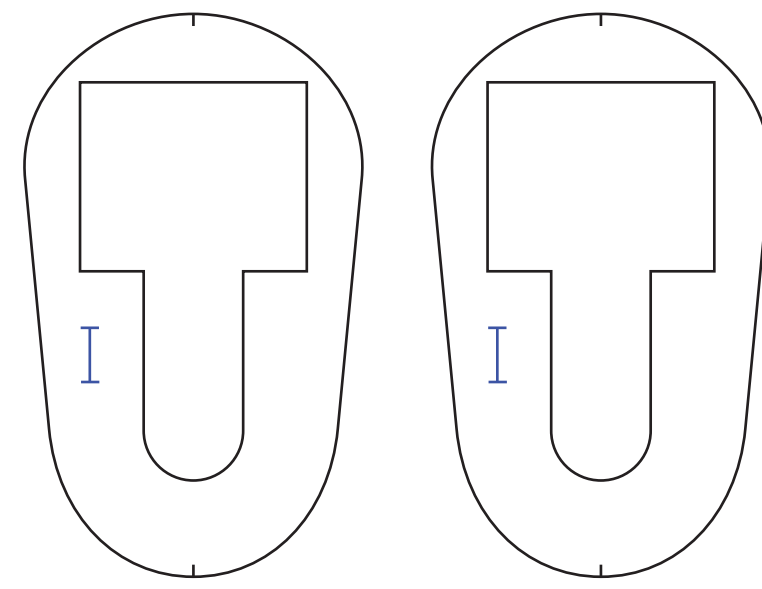
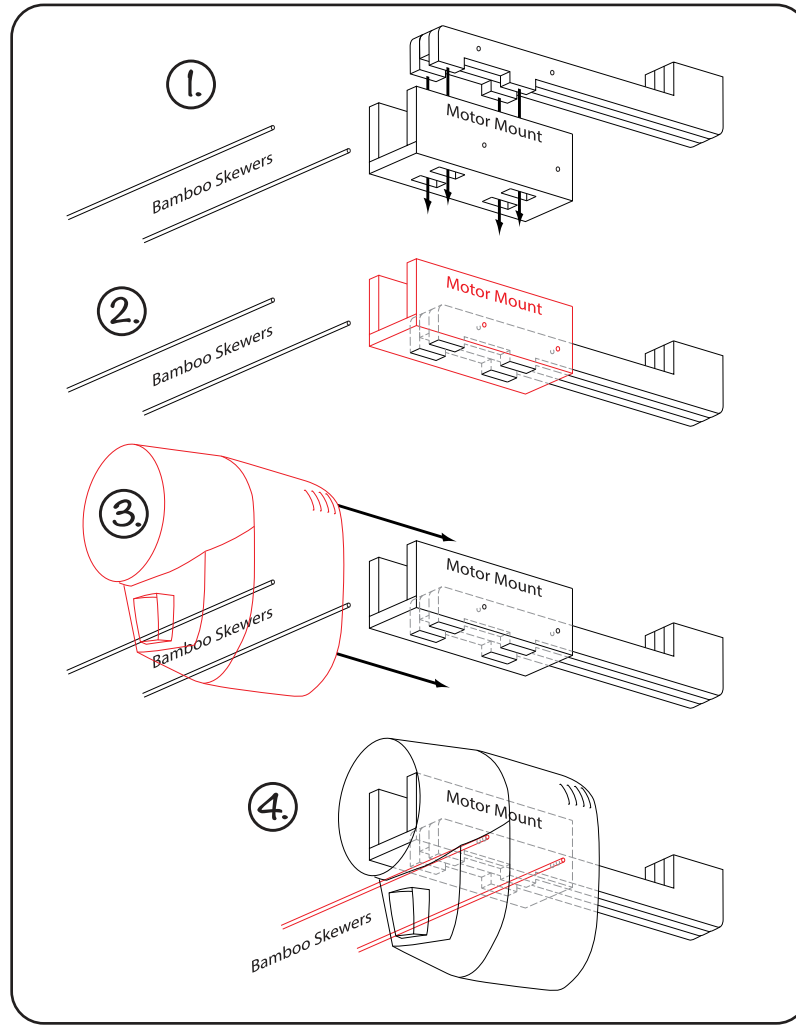
How to glue the leading edges of the wings.



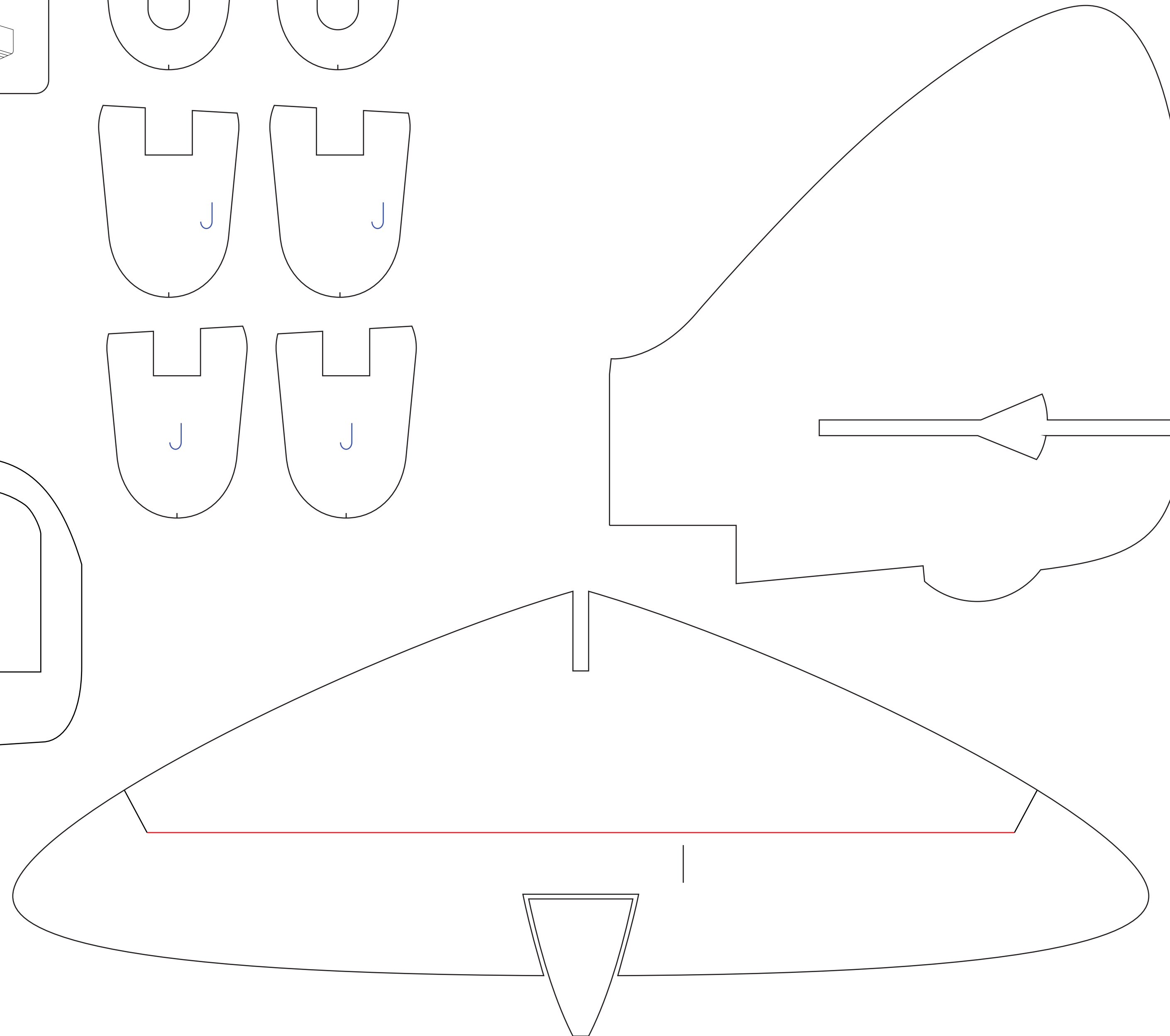
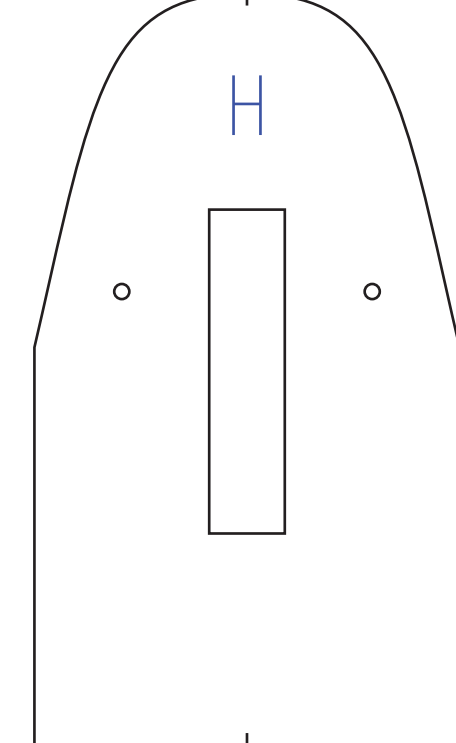
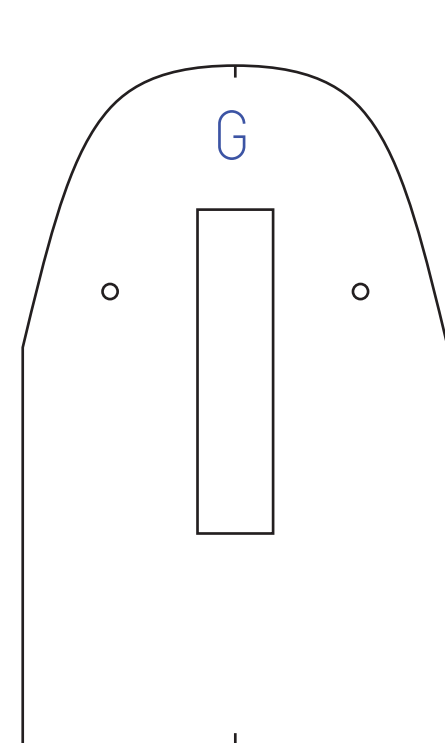
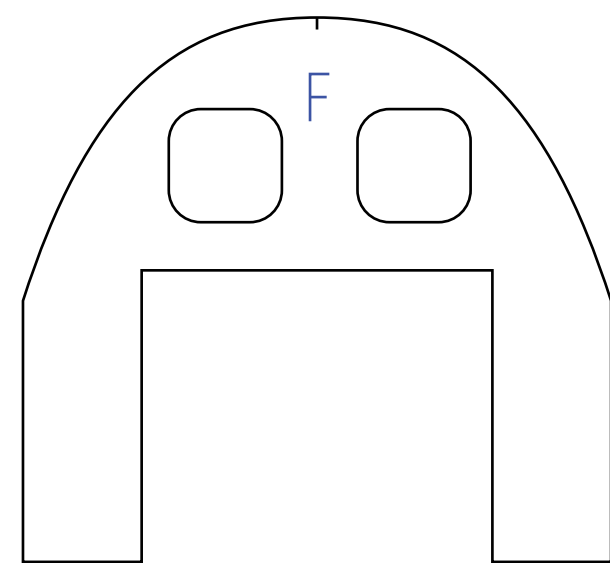
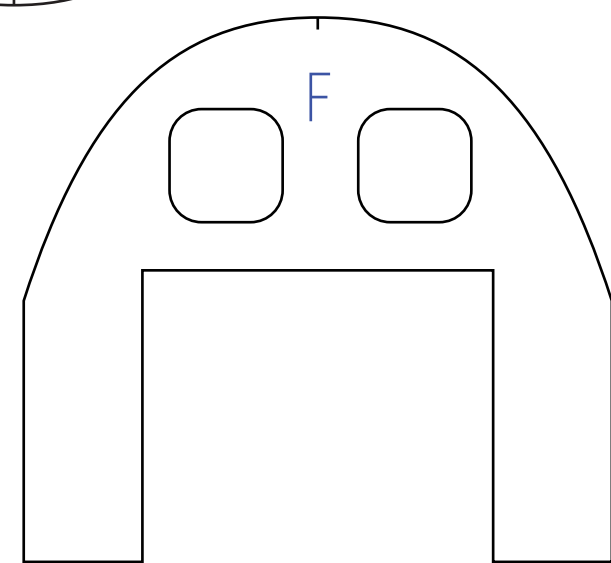
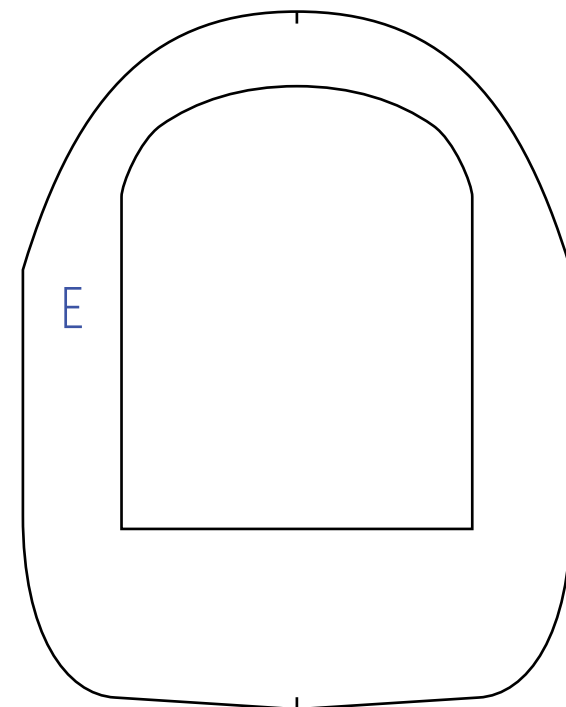
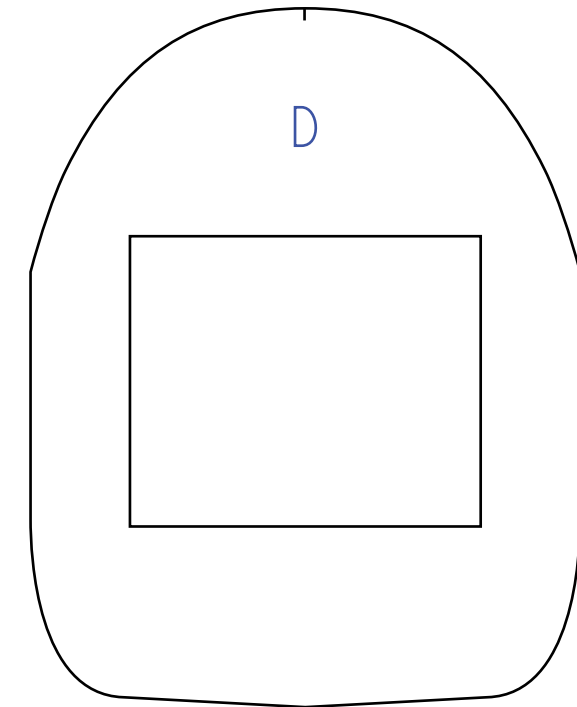
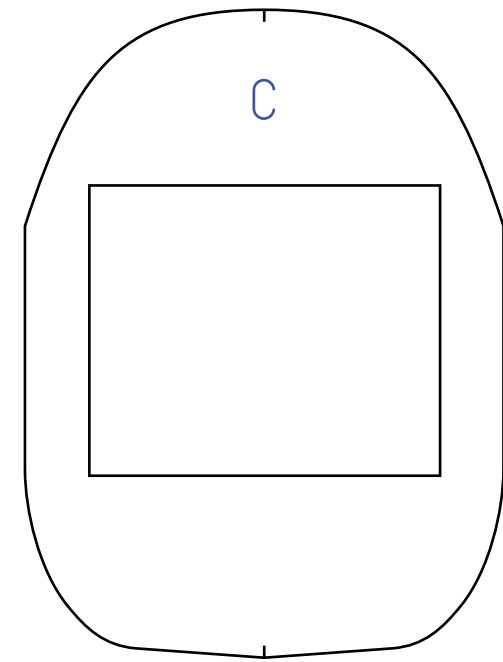
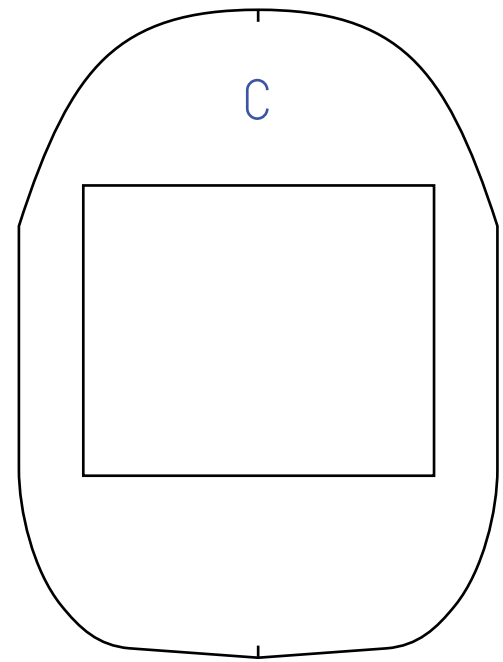
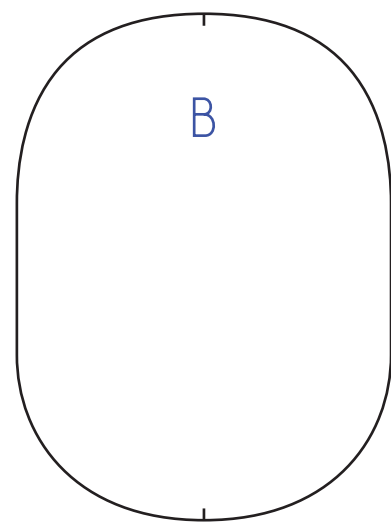
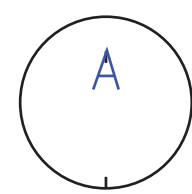
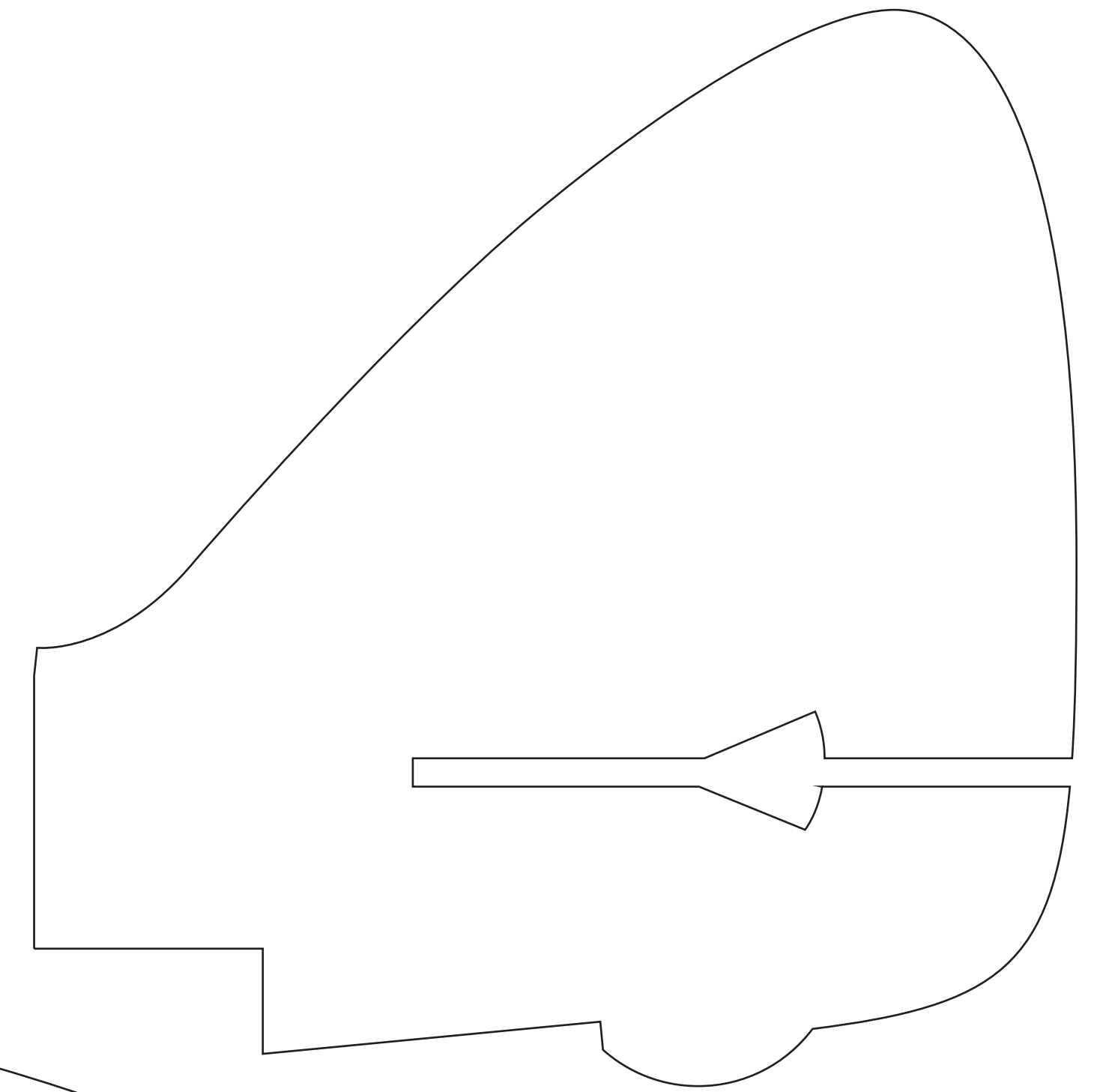
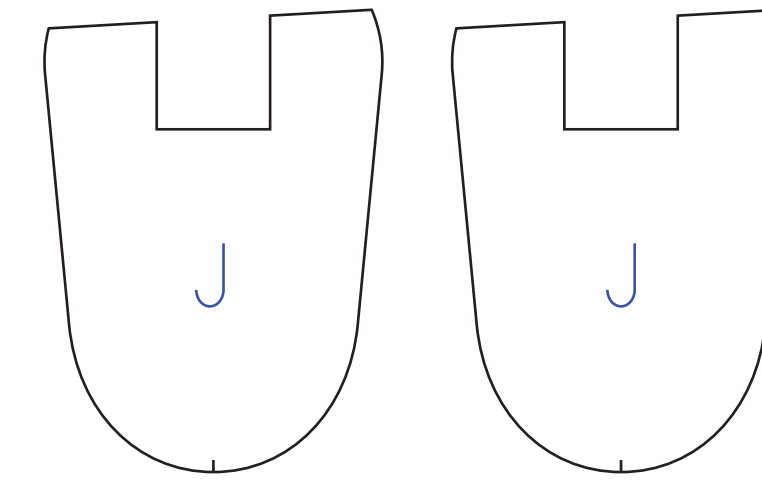
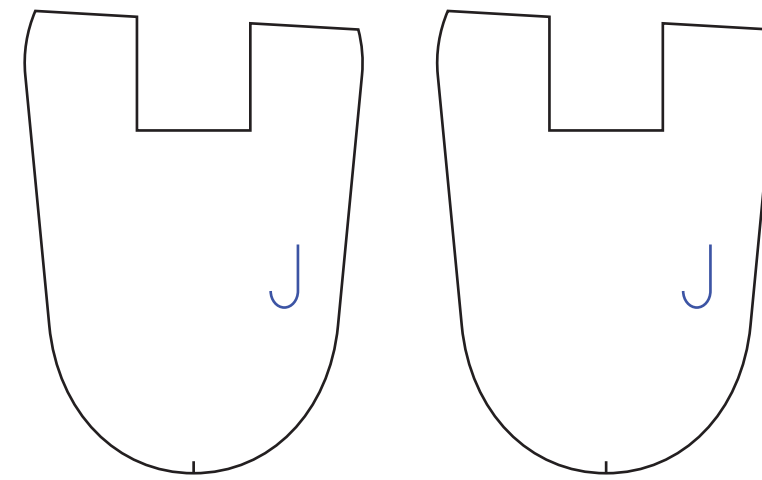
You'll have excess foam here once you glue this piece to the top wing. Just trim it off once it has been glued.



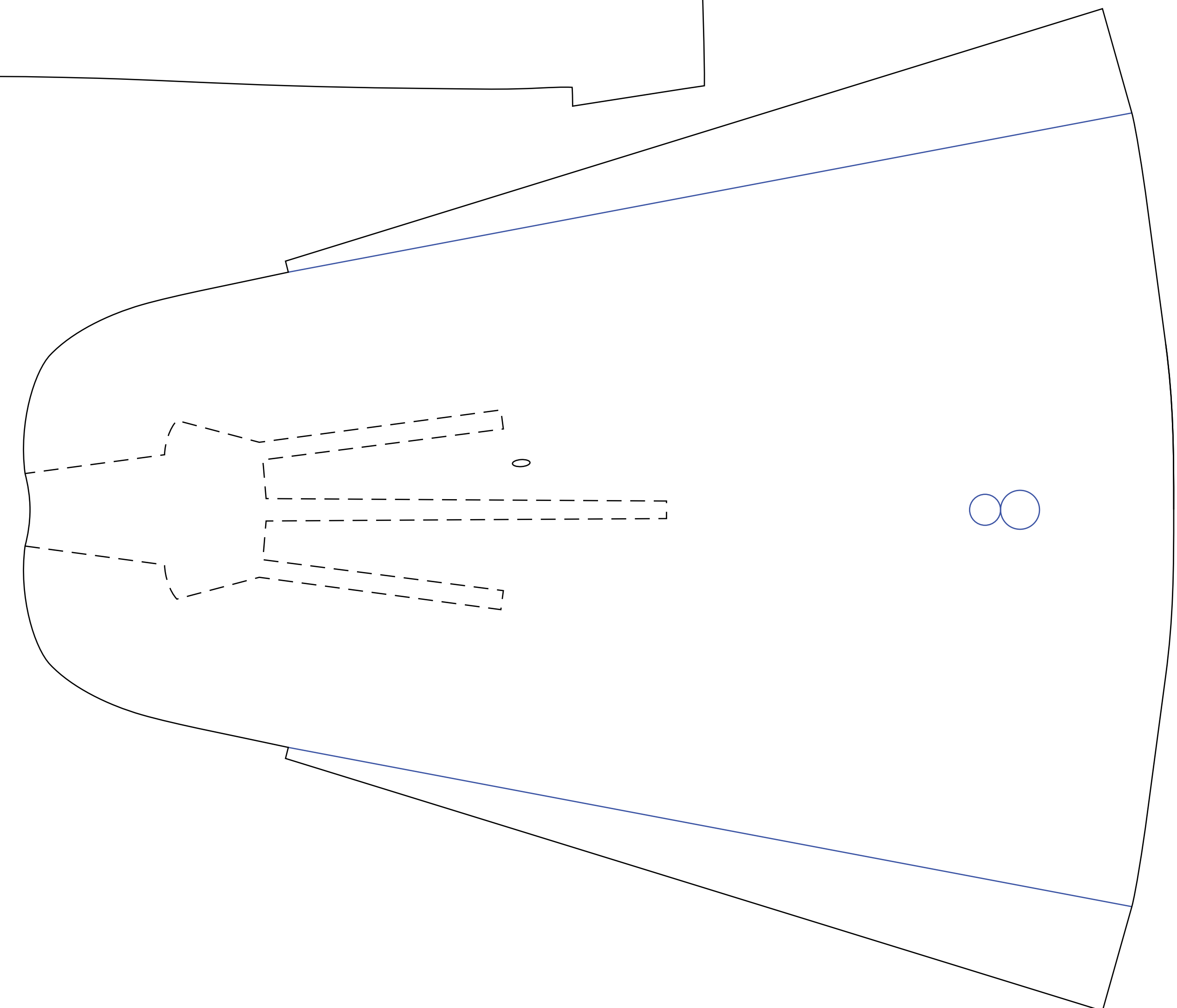
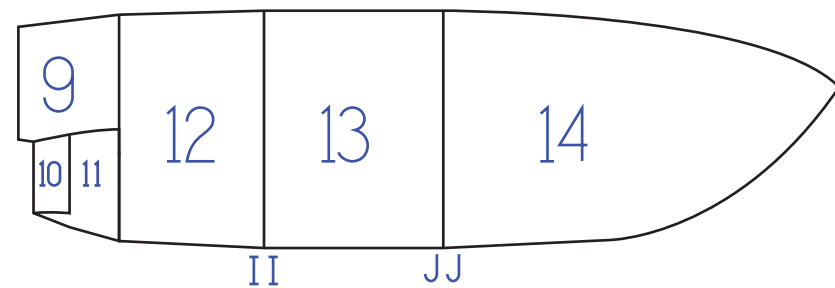
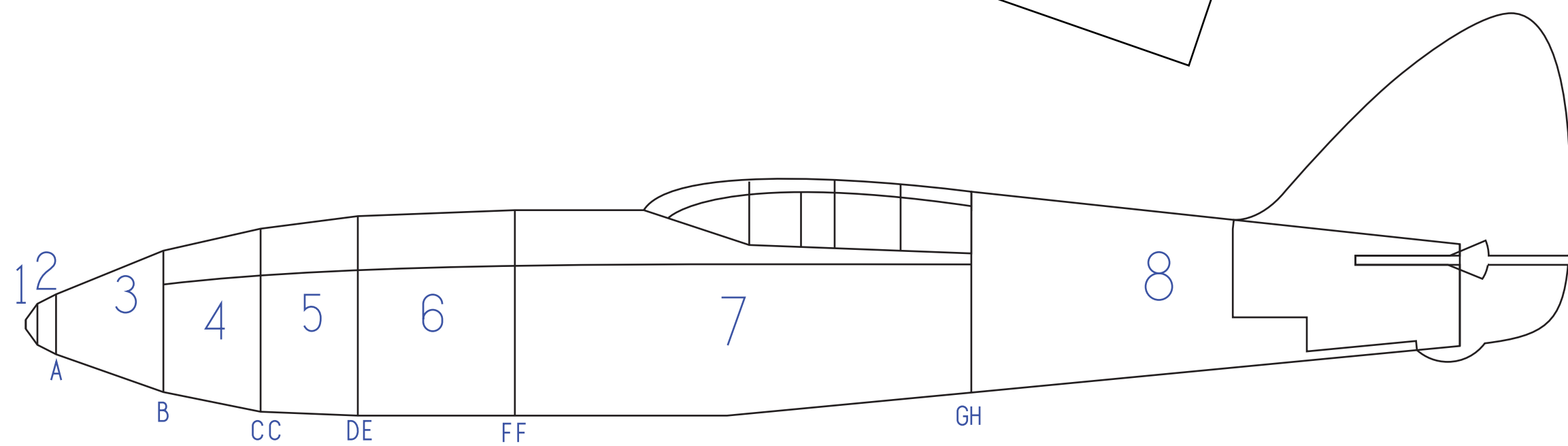
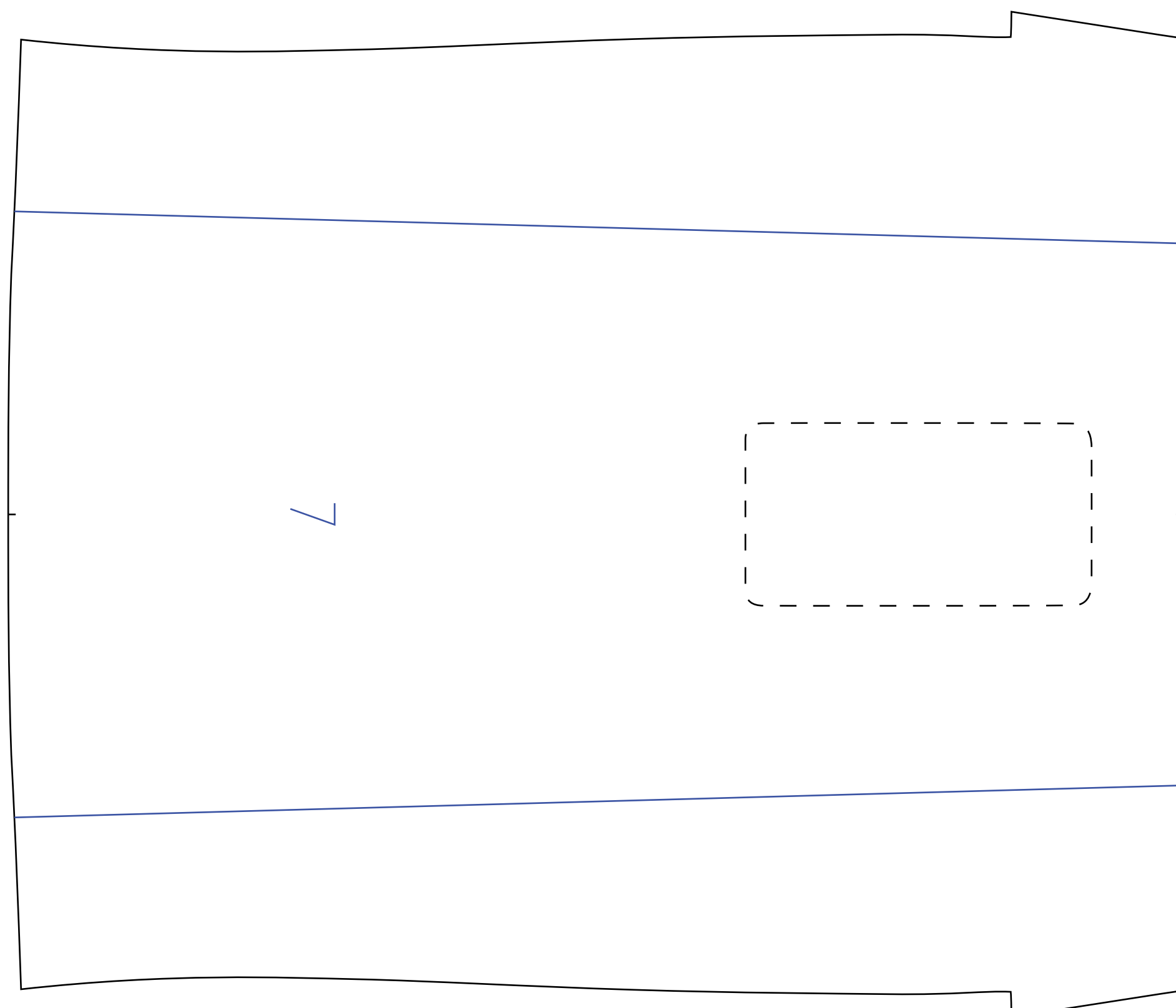
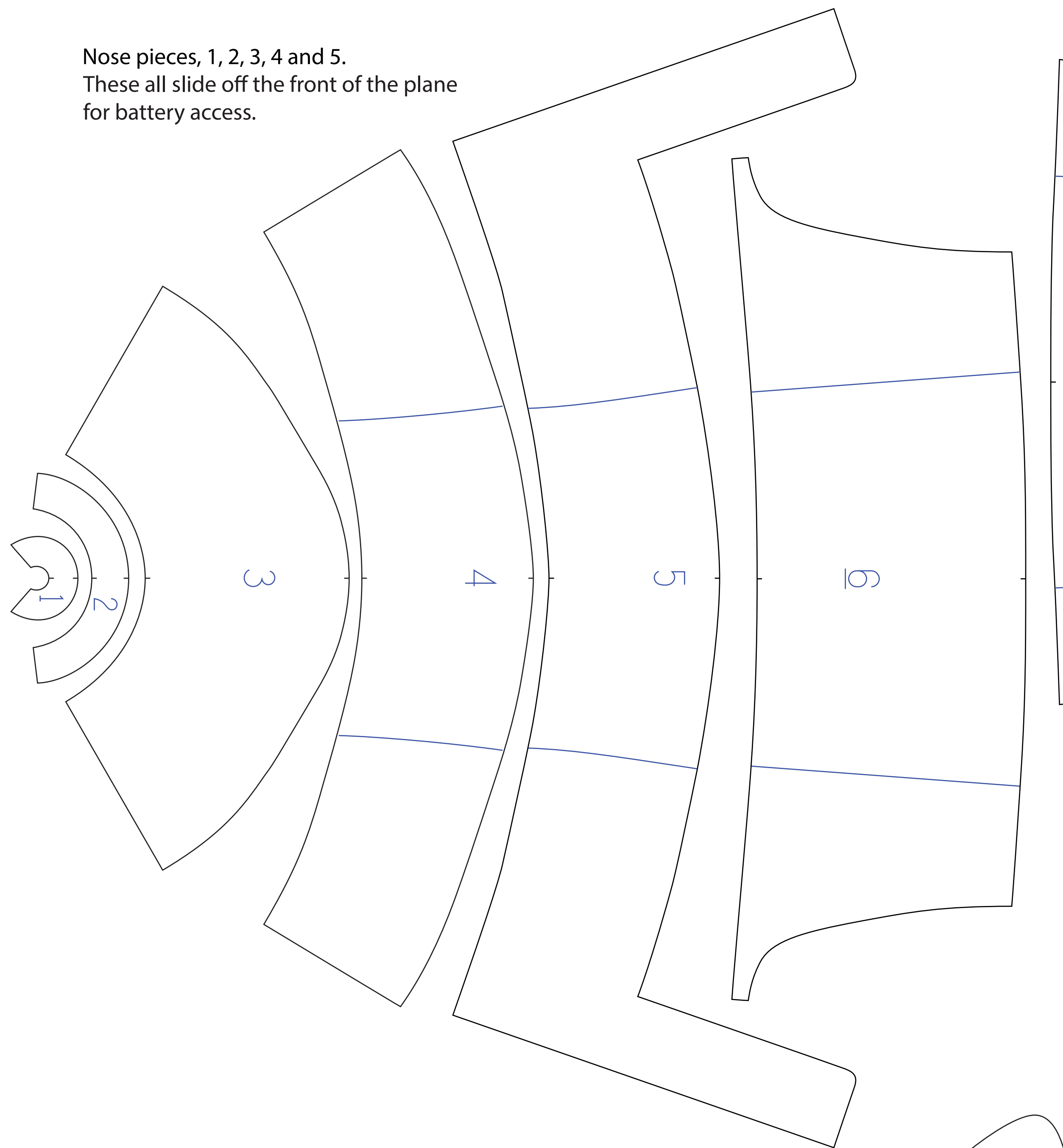
If you'd like to make your plane swappable, then follow the directions below. If you don't care to make it have swappable engines, then just glue all of the pieces together.

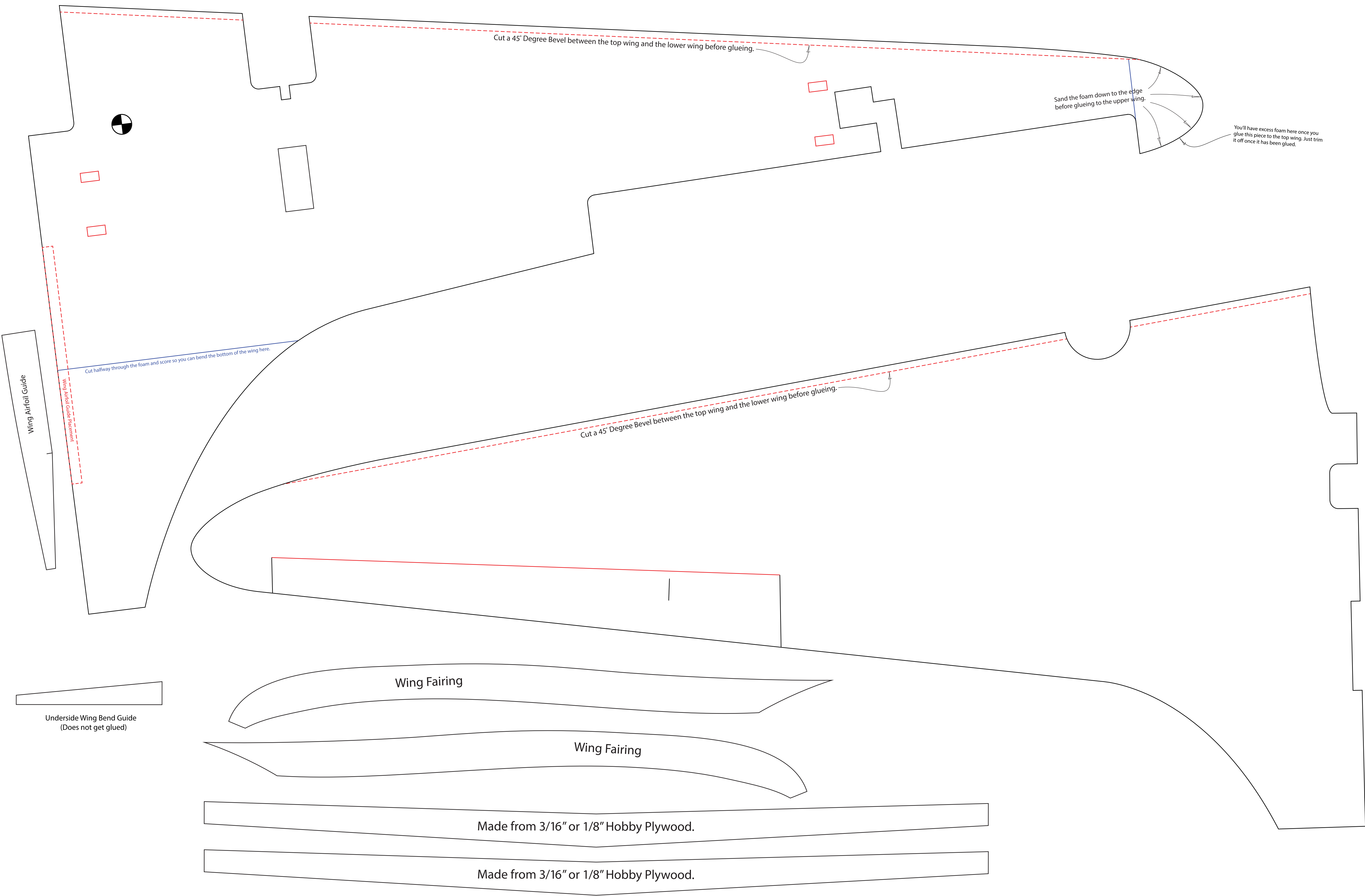


Do not glue the "I" formers to the engine mount if you are making it swappable.



Nose pieces, 1, 2, 3, 4 and 5.
These all slide off the front of the plane
for battery access.





Cut a 45 Degree Bevel between the top wing and the lower wing before glueing.

Sand the foam down to the edge before glueing to the upper wing.

You'll have excess foam here once you glue this piece to the top wing. Just trim it off once it has been glued.

Cut halfway through the foam and score so you can bend the bottom of the wing here.

Cut a 45 Degree Bevel between the top wing and the lower wing before glueing.

Wing Fairing

Wing Fairing

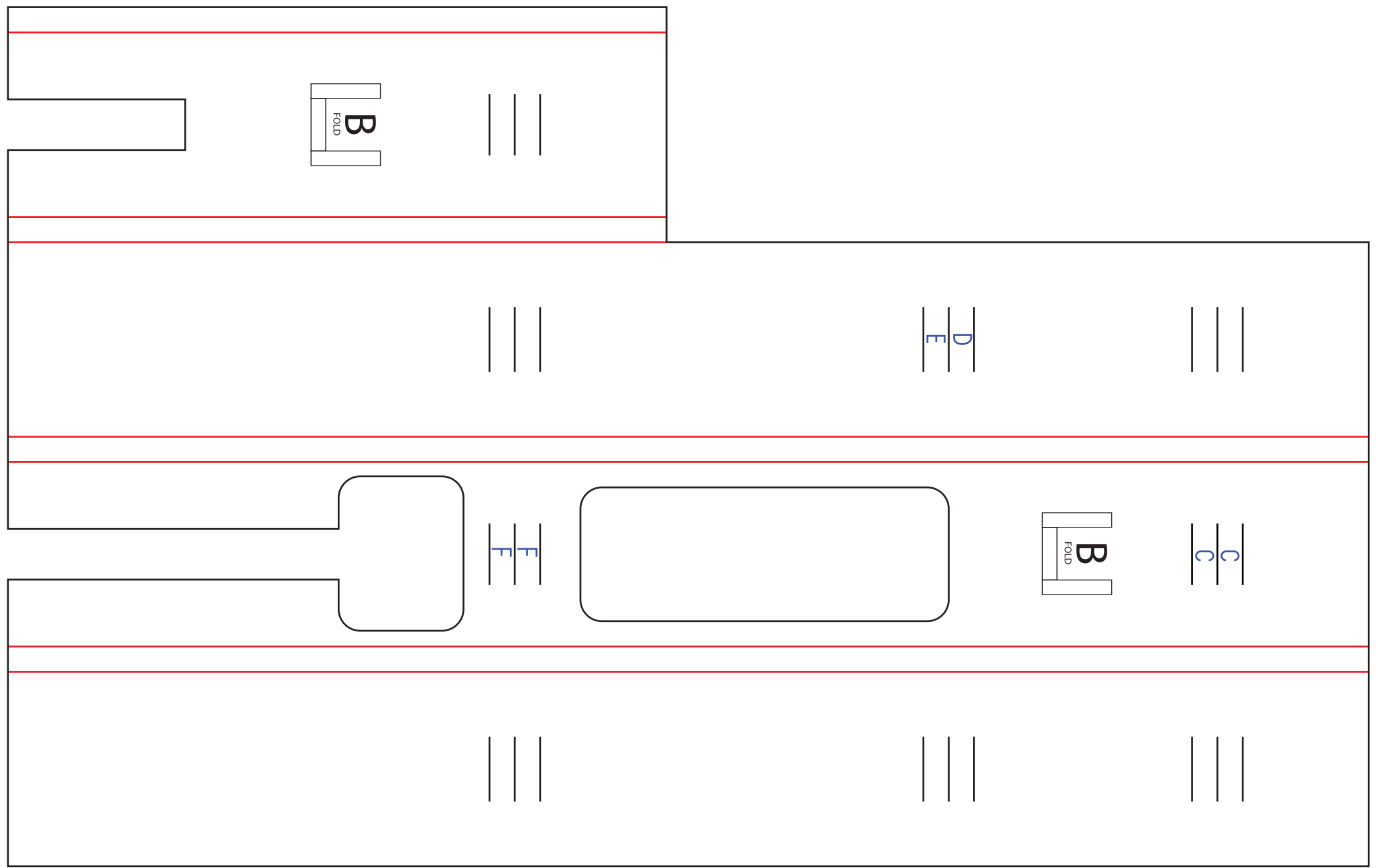
Made from 3/16" or 1/8" Hobby Plywood.

Made from 3/16" or 1/8" Hobby Plywood.

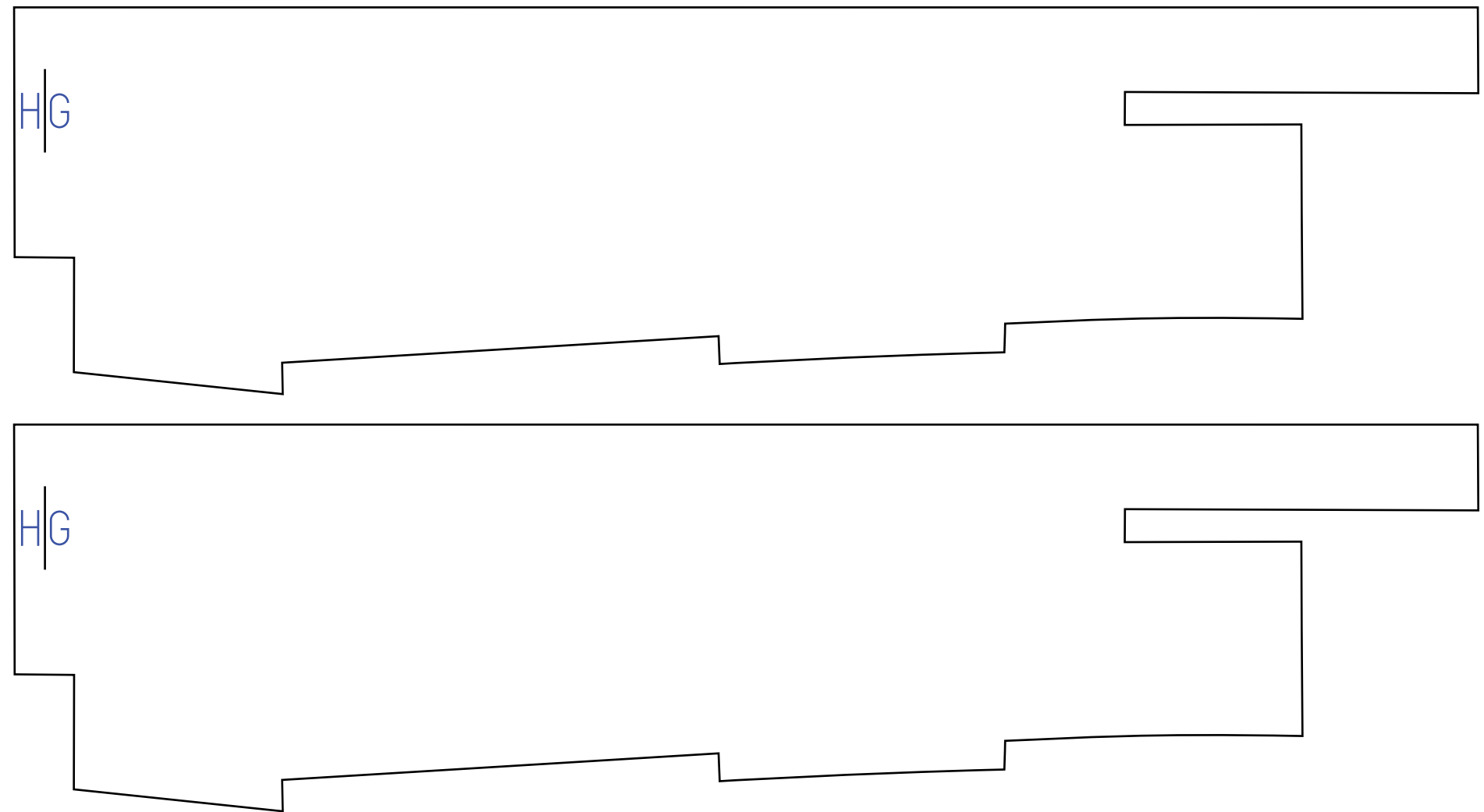
Wing Airfoil Guide

Wing Airfoil Guide Placement

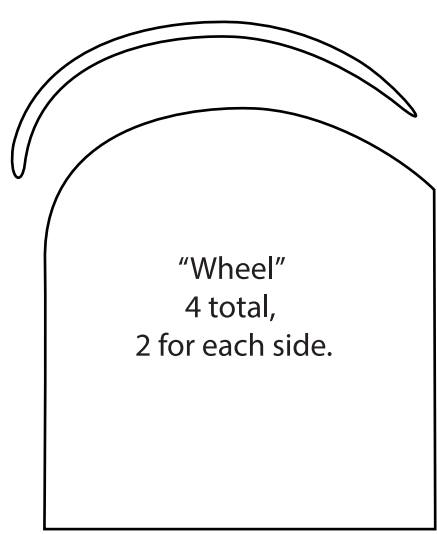
Underside Wing Bend Guide
(Does not get glued)



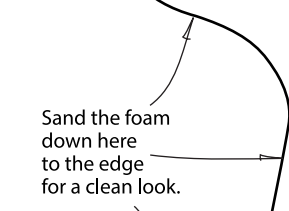
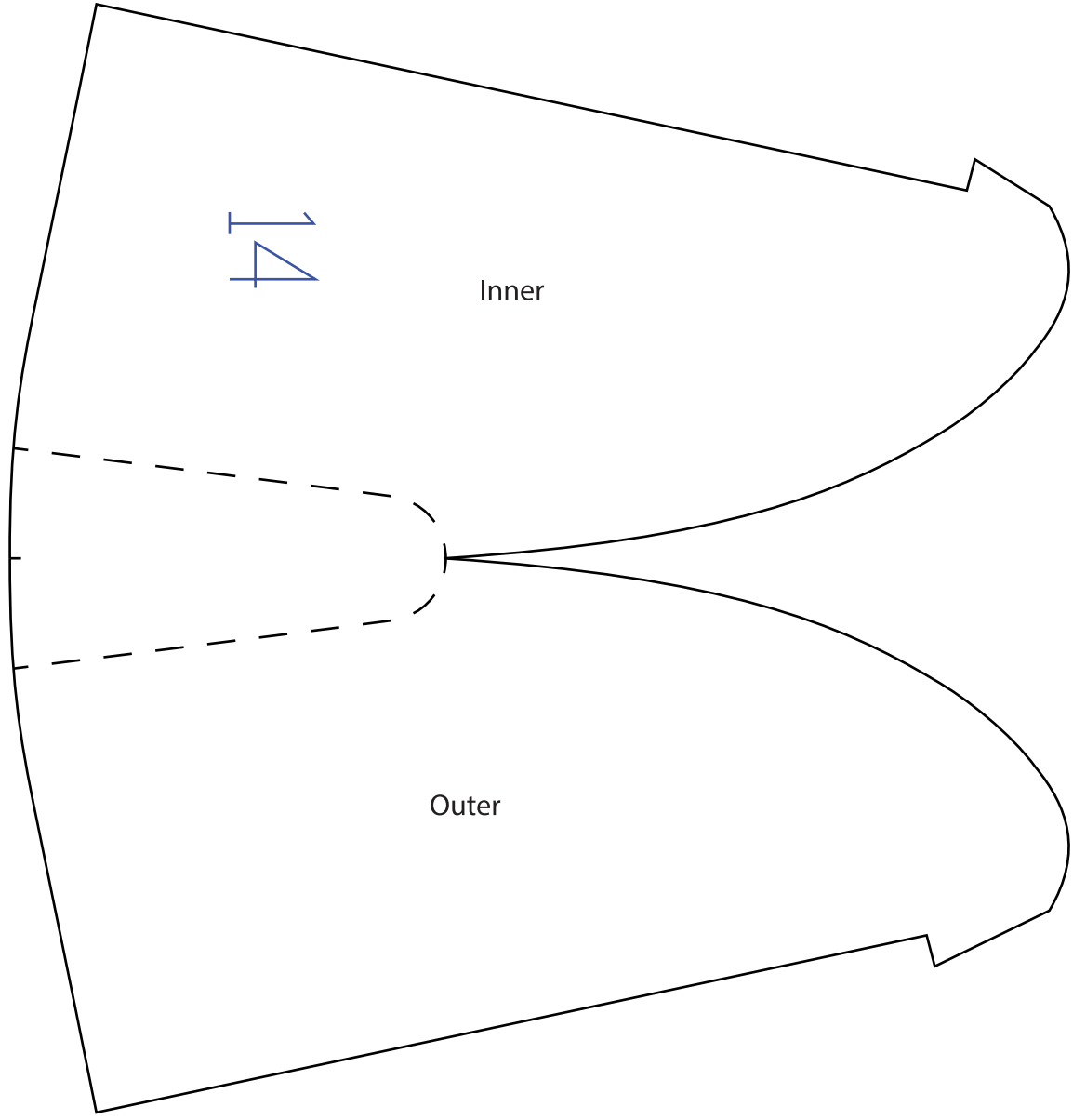
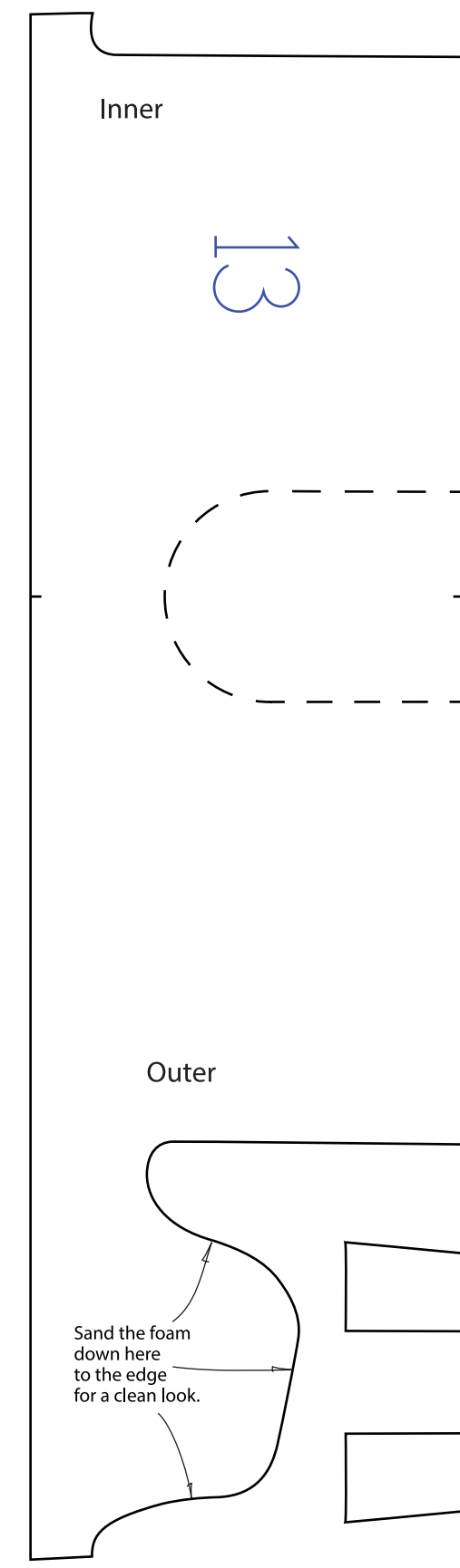
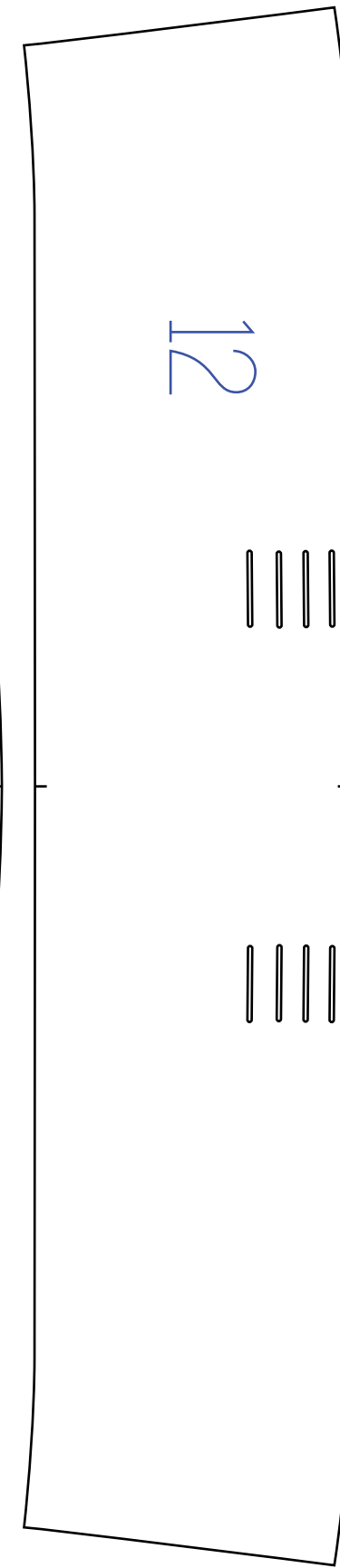
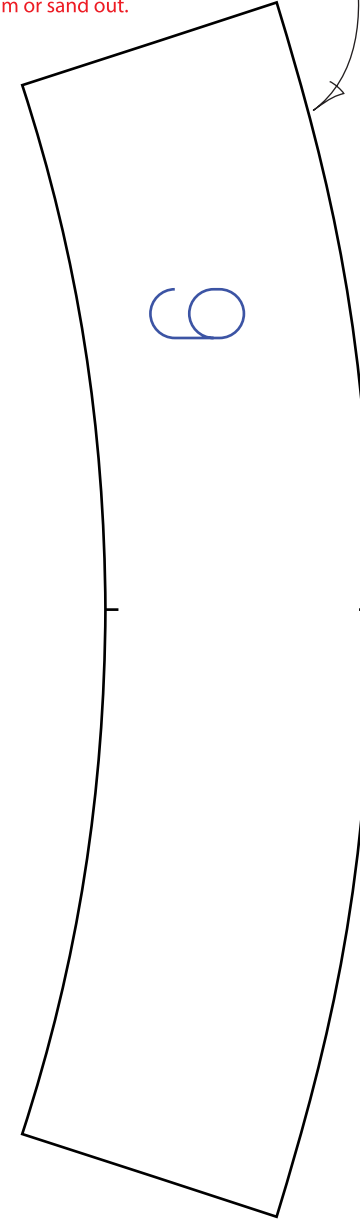
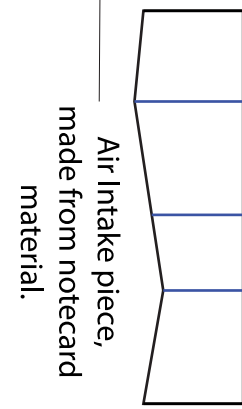
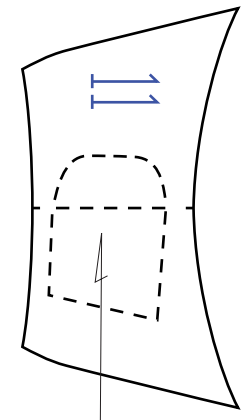
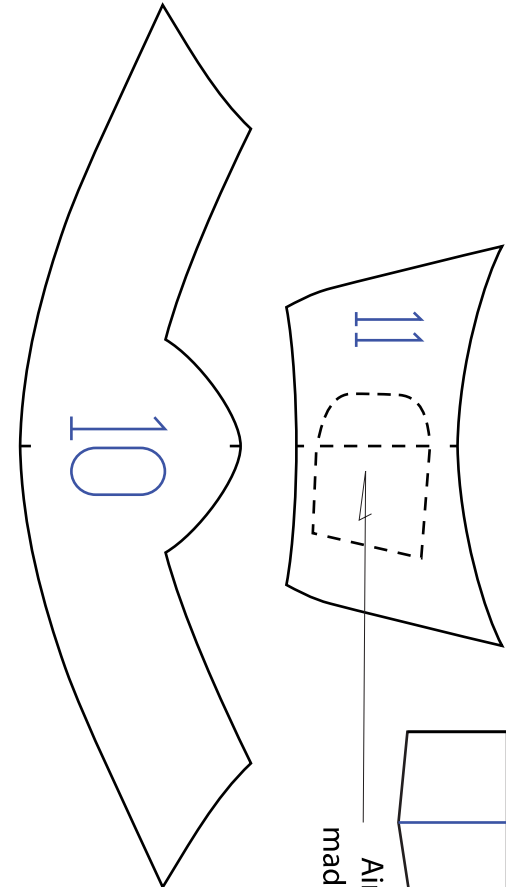
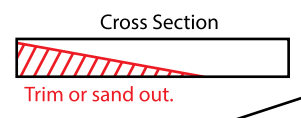
Do not glue the formers, "C & D," to the box frame because those are the formers from the nose that slides off for battery access.



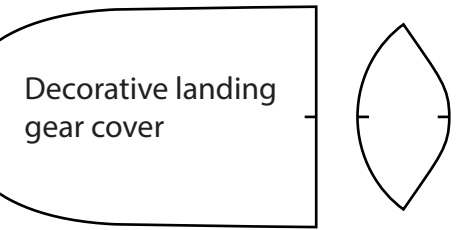
We made a "skid" here out of wood that we cut on a jigsaw and glued to the foamboard.



Trim the foam on the backside to a point on this piece. You have to do this to make room for the motor mount.



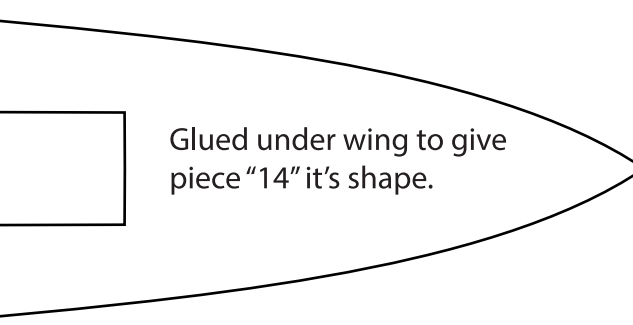
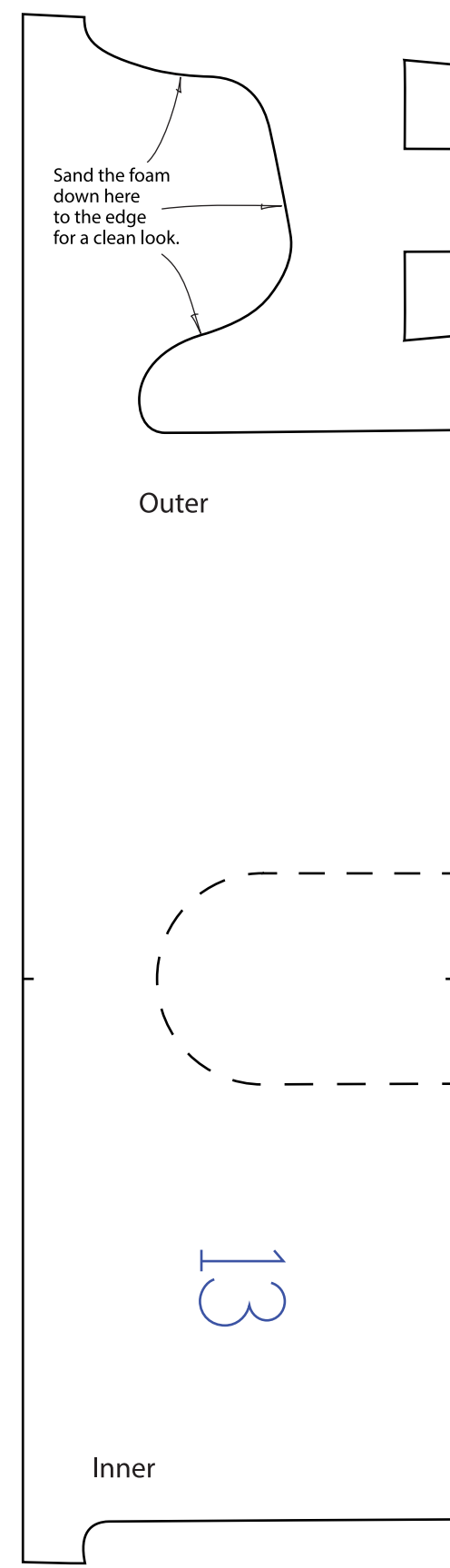
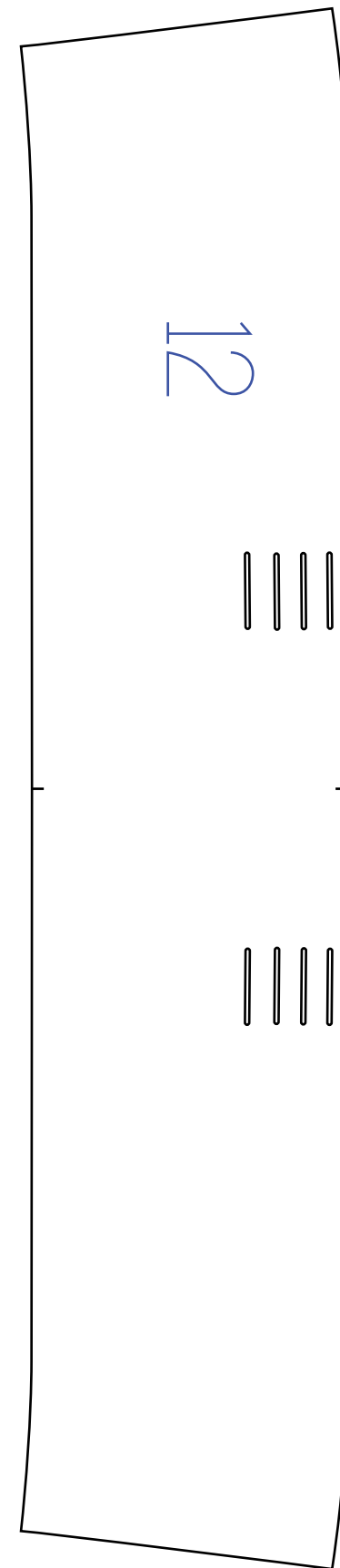
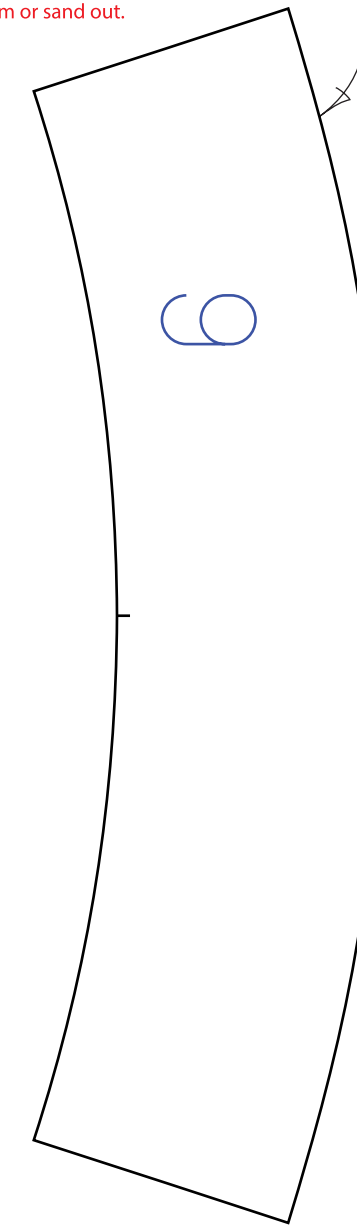
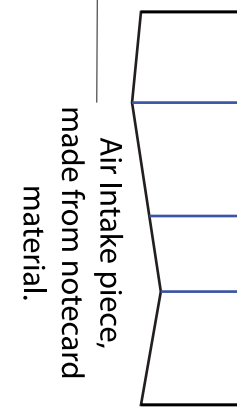
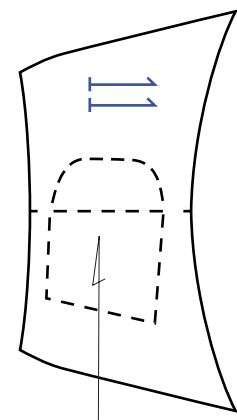
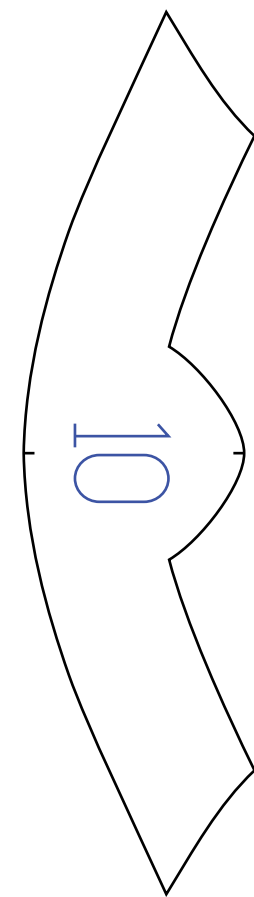
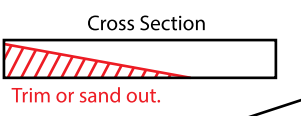
Glued under wing to give piece "14" it's shape.



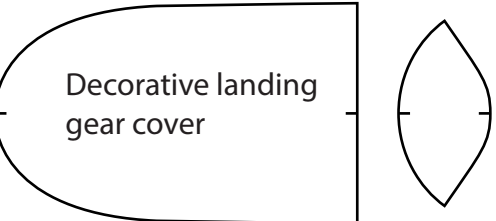
We made a "skid" here out of wood that we cut on a jigsaw and glued to the foamboard.



Trim the foam on the backside to a point on this piece. You have to do this to make room for the motor mount.



Glued under wing to give piece "14" it's shape.



Top Wing Letters

G - A C S S S

Bottom Wing Letters

G - A C S S S

G - A C S S S

THIRTEENTH SQUADRON
GROSVENOR HOUSE

Use all of these letters here as guides if you are making decals for your plane.

G - A C S S S

13 13