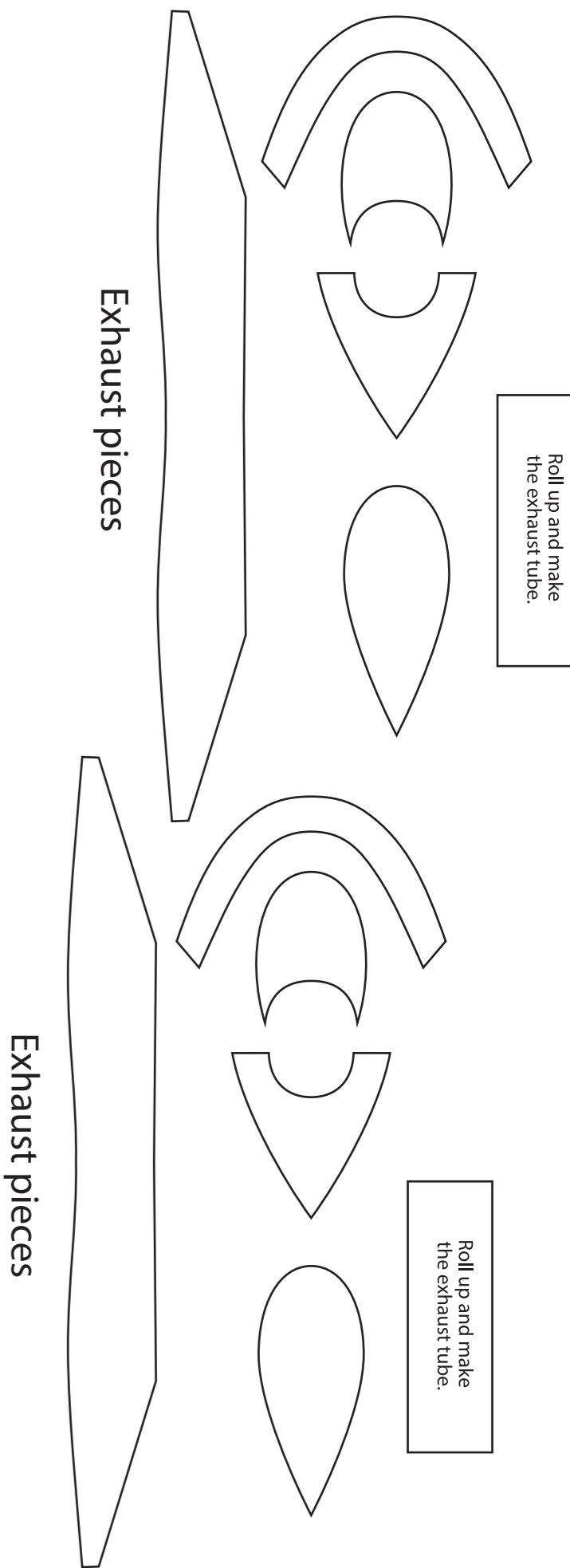
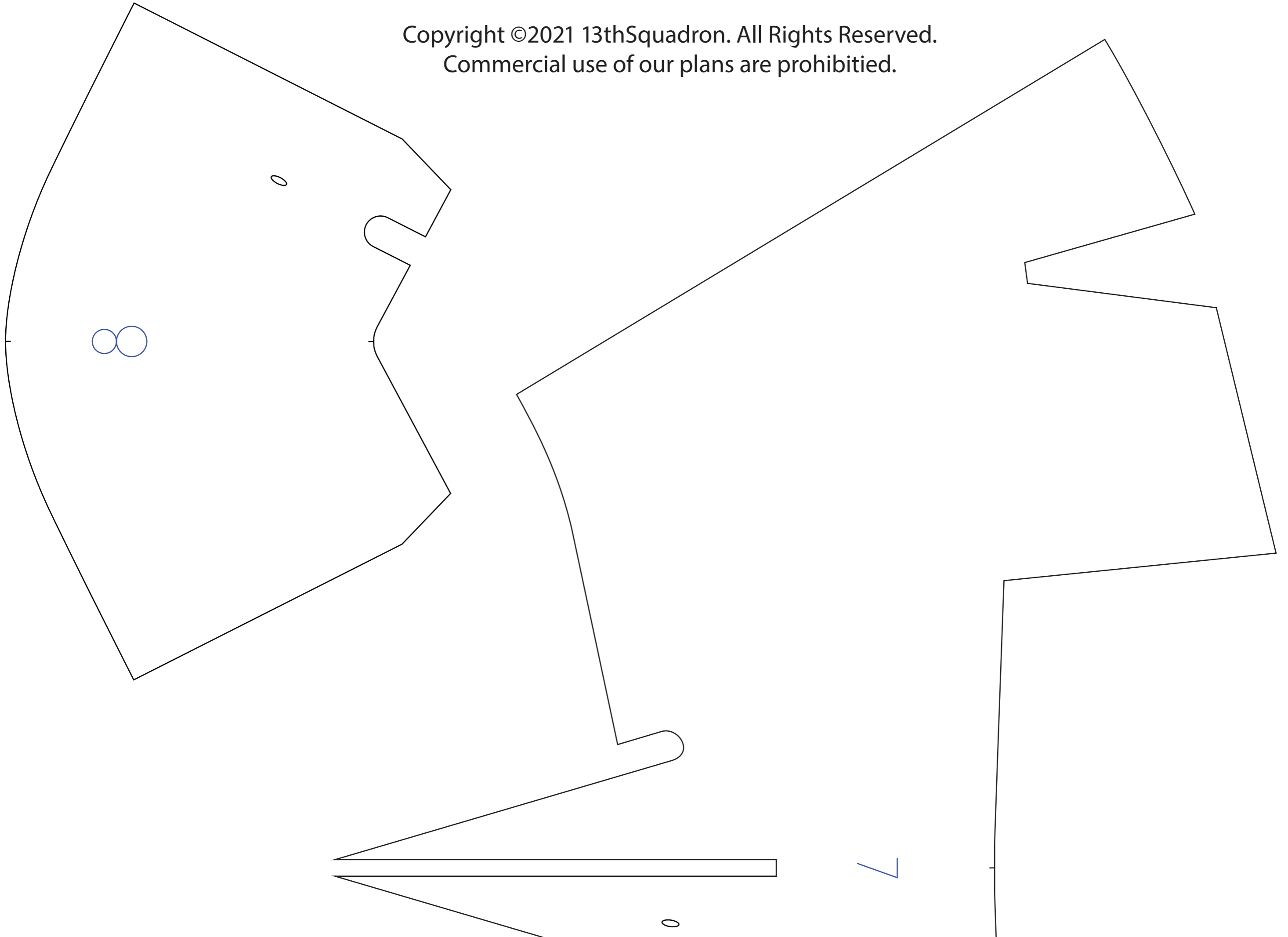


Copyright ©2021 13thSquadron. All Rights Reserved.
Commercial use of our plans are prohibited.



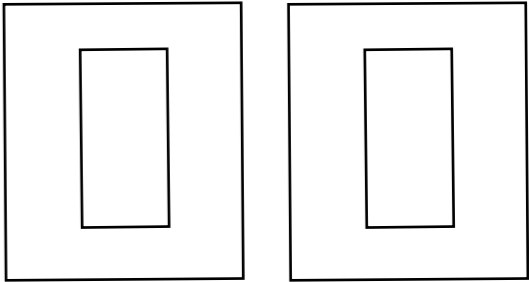
Copyright ©2021 13thSquadron. All Rights Reserved.
Commercial use of our plans are prohibited.



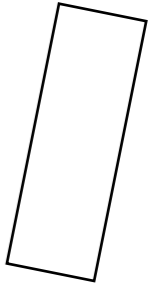
Copyright ©2021 13thSquadron. All Rights Reserved.
Commercial use of our plans are prohibited.



Servo Doublers

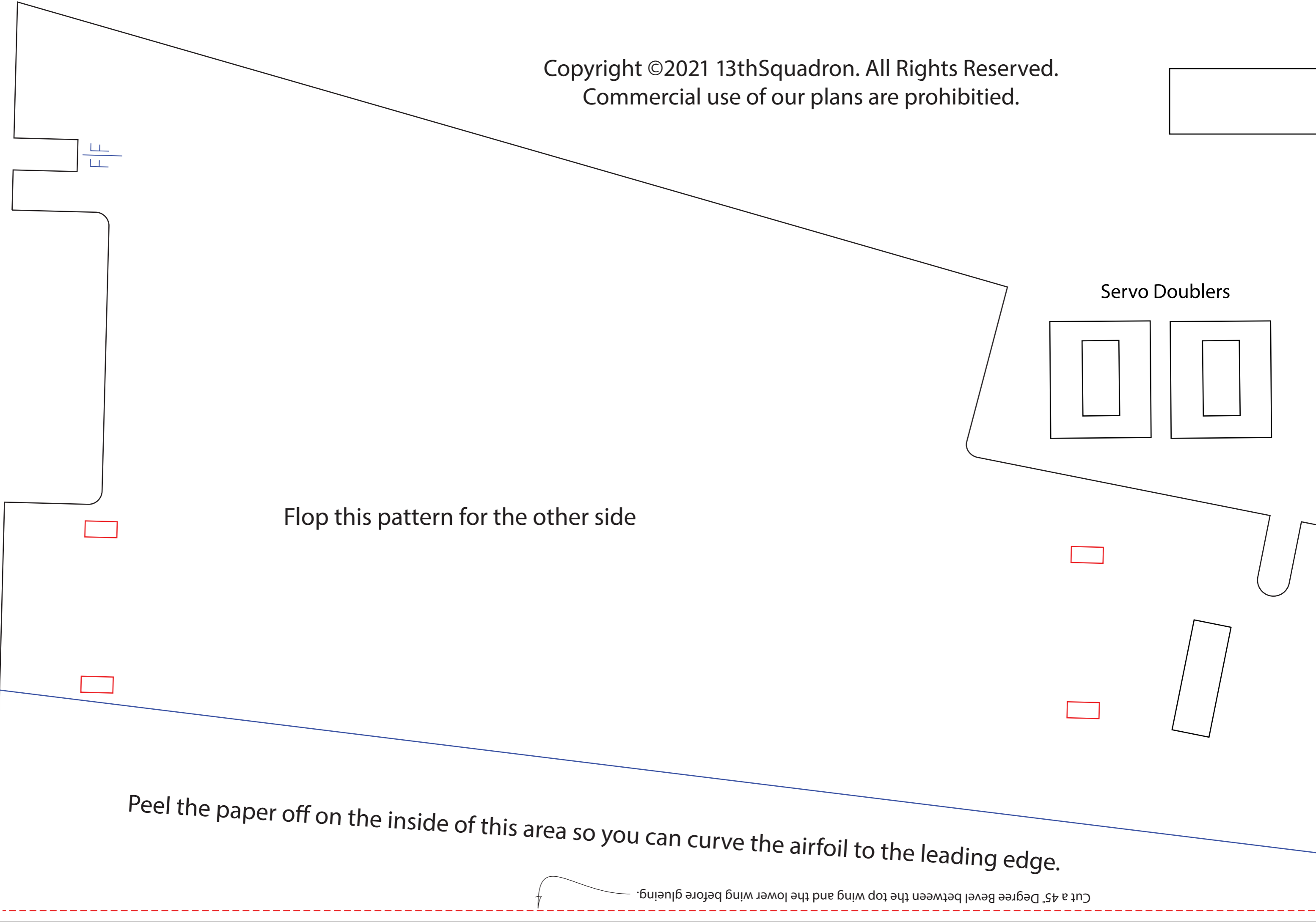


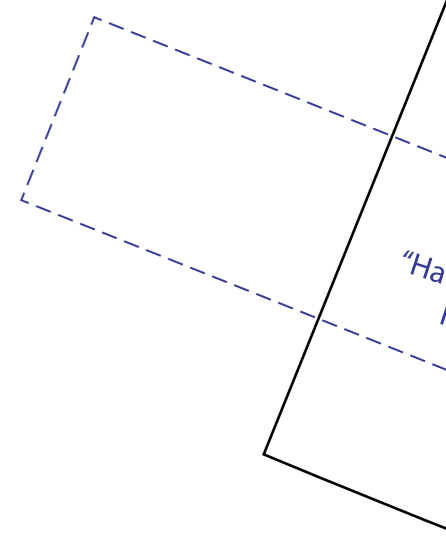
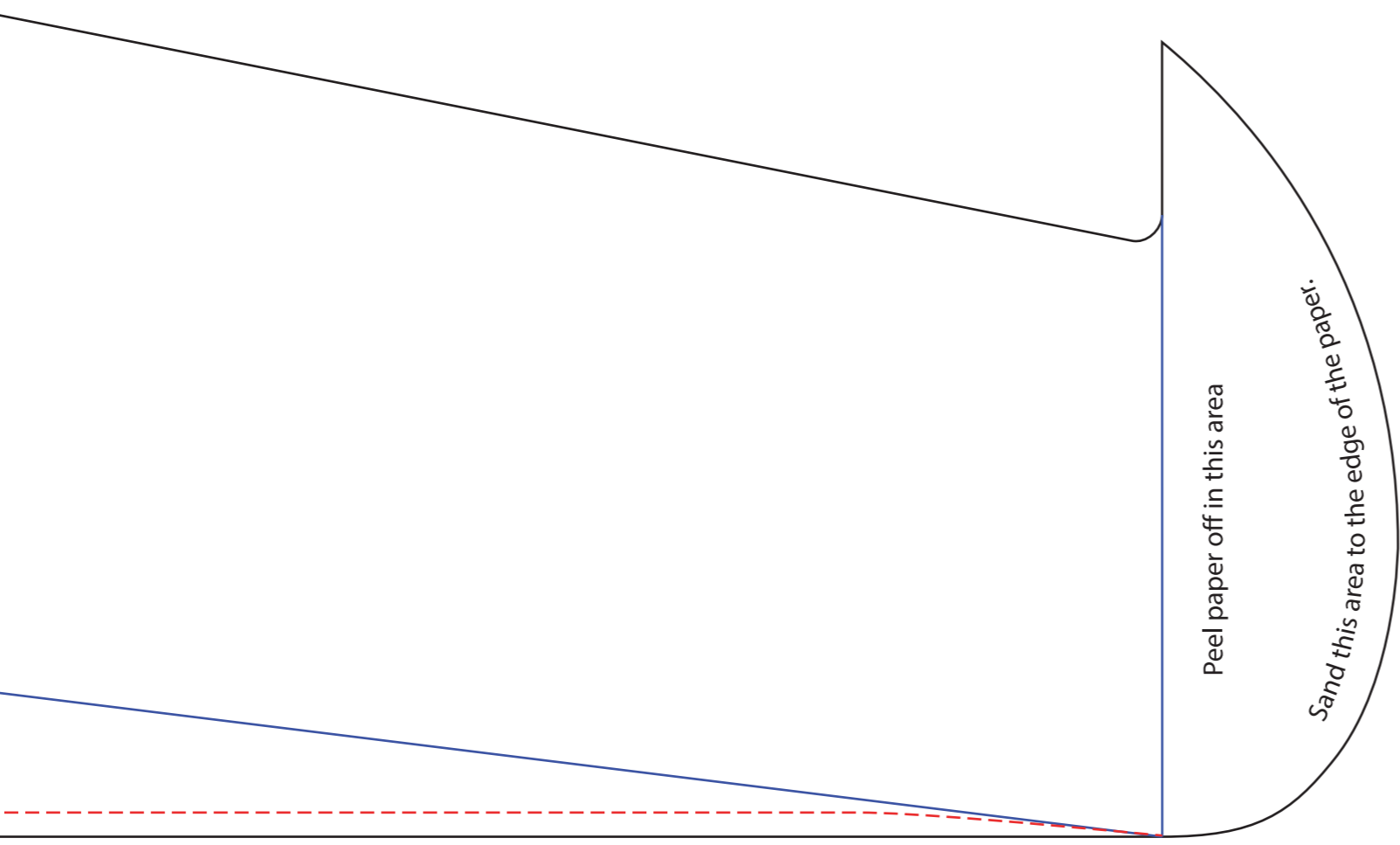
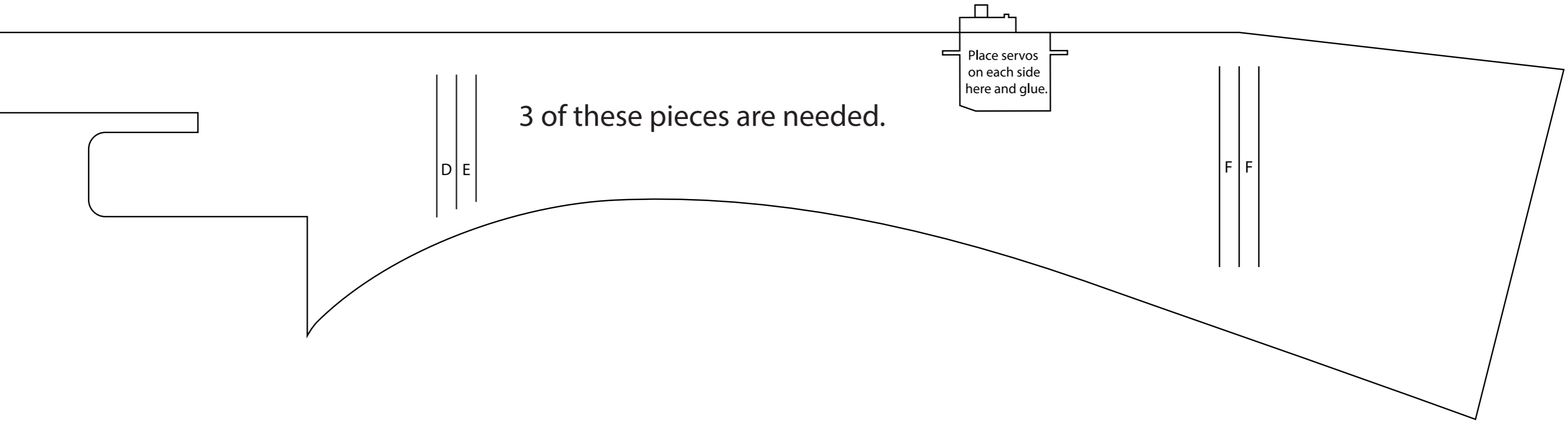
Flop this pattern for the other side



Peel the paper off on the inside of this area so you can curve the airfoil to the leading edge.

Cut a 45° Degree Bevel between the top wing and the lower wing before gluing.





Copyright ©2021 13thSquadron. All Rights Reserved.
Commercial use of our plans are prohibited.

This piece is used for the hatch

This piece is used for the hatch

Exhaust Port Location
Do not glue this one

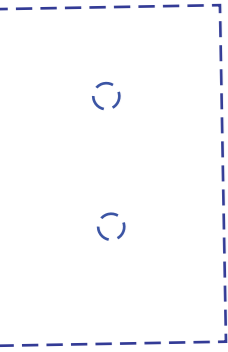
Exhaust Port Location
glue this one

Glue
"Hatch piece"
here.

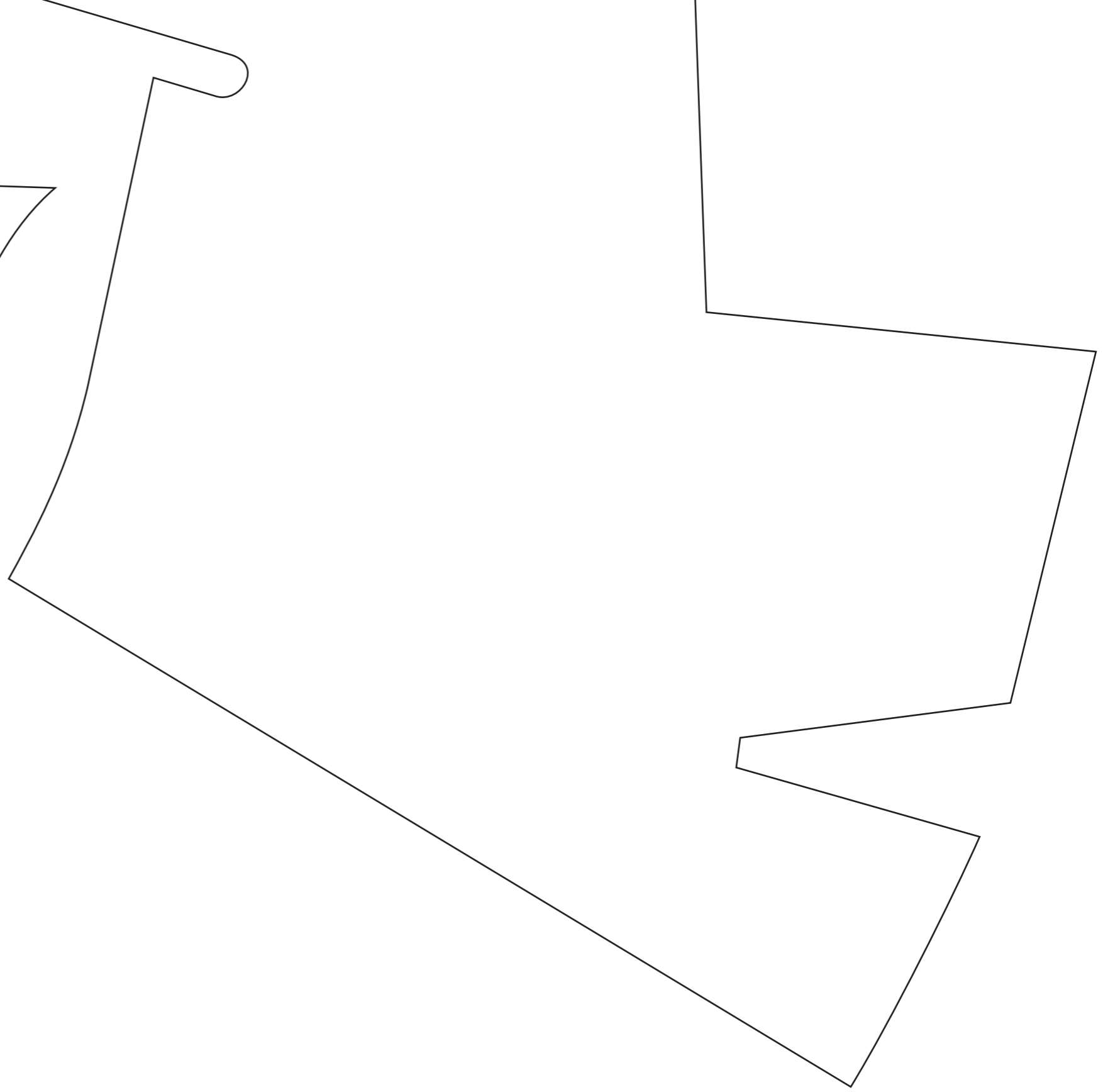
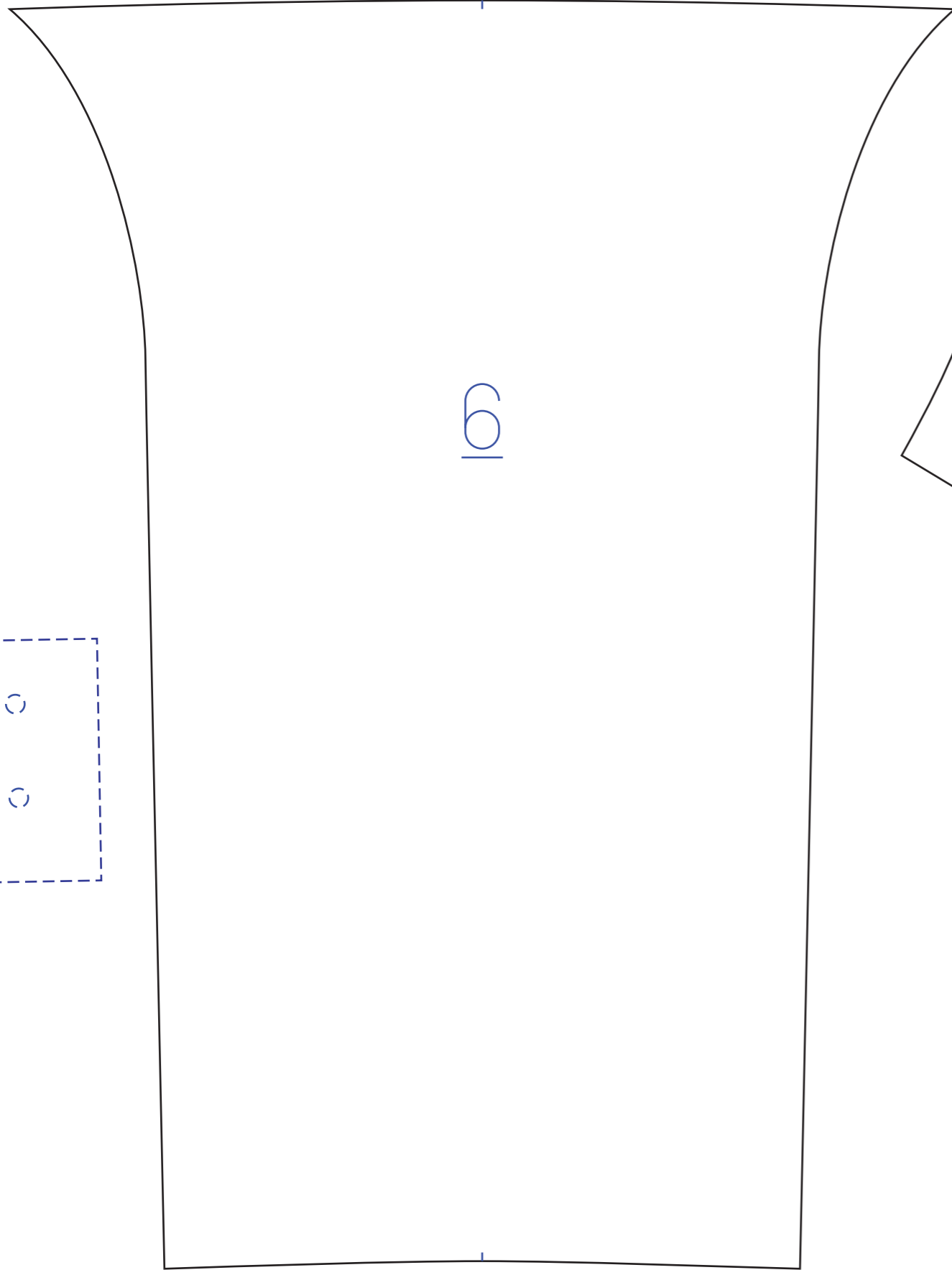
Glue
"Hatch piece"
here.

This will be the hinge for the hatch.

57



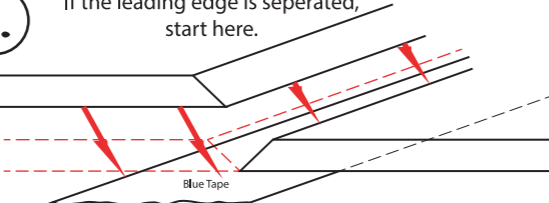
101

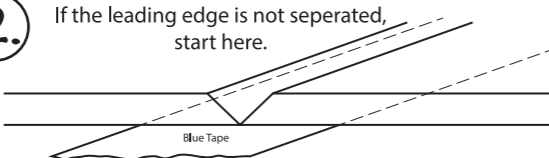


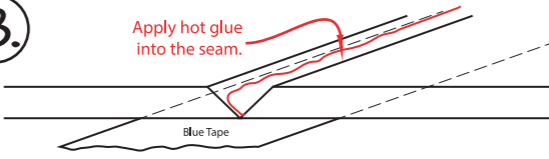
Cut a 45° Degree Bevel between the top wing and the lower wing before glueing.

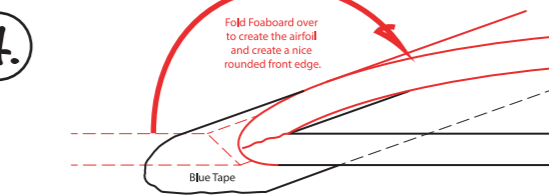
How to do the Leading Edges of the wings and elevator.

1. If the leading edge is seperated, start here.

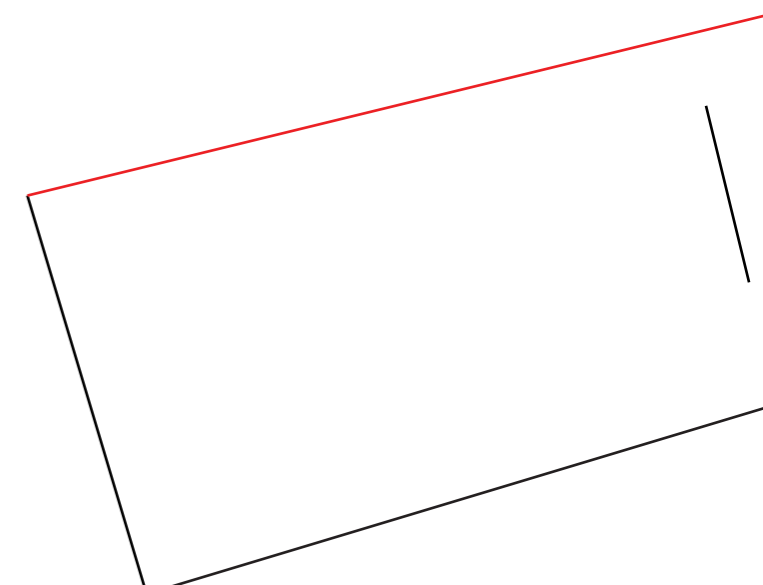

2. If the leading edge is not seperated, start here.

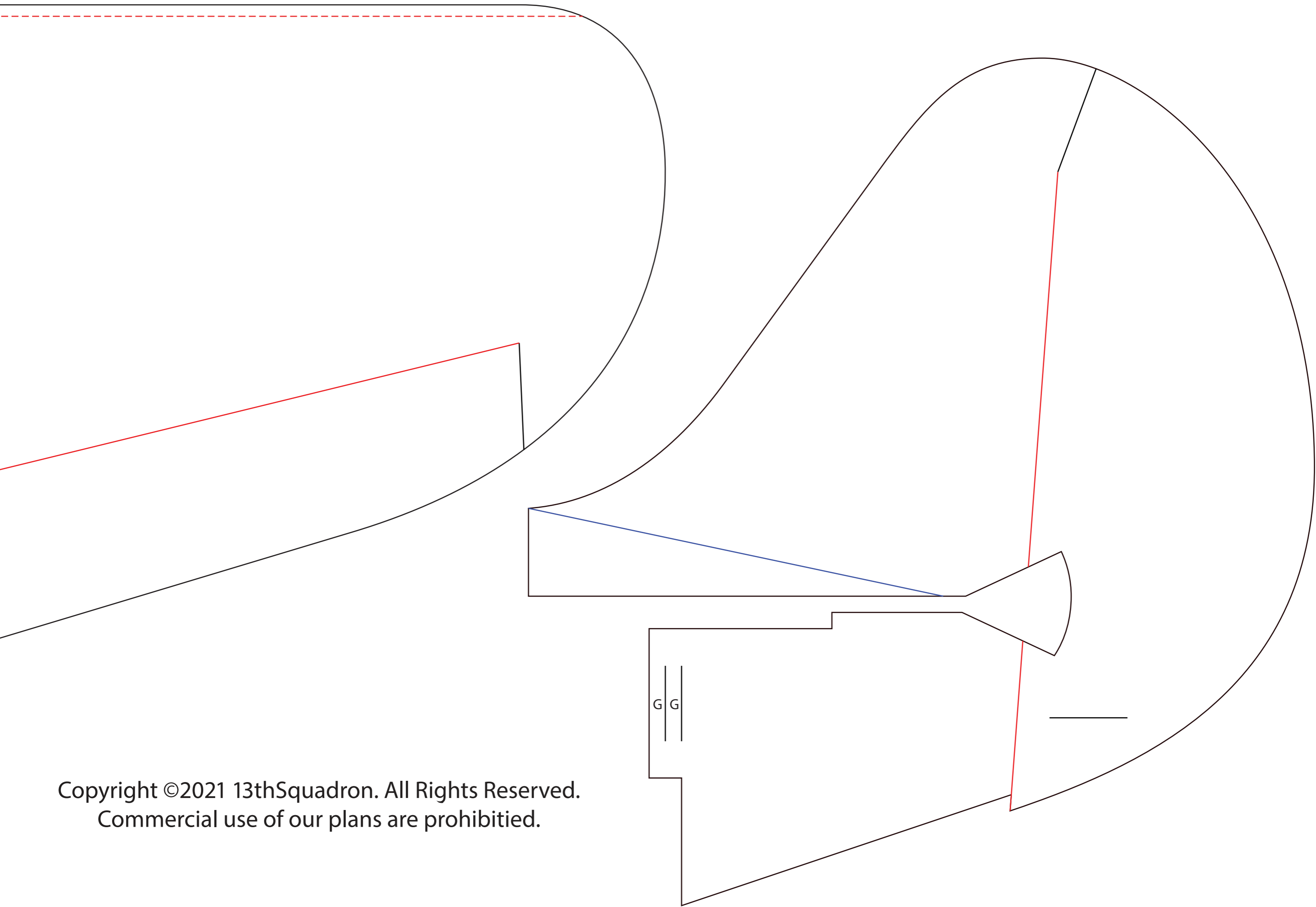

3. Apply hot glue into the seam.


4. Fold Foaboard over to create the airfoil and create a nice rounded front edge.

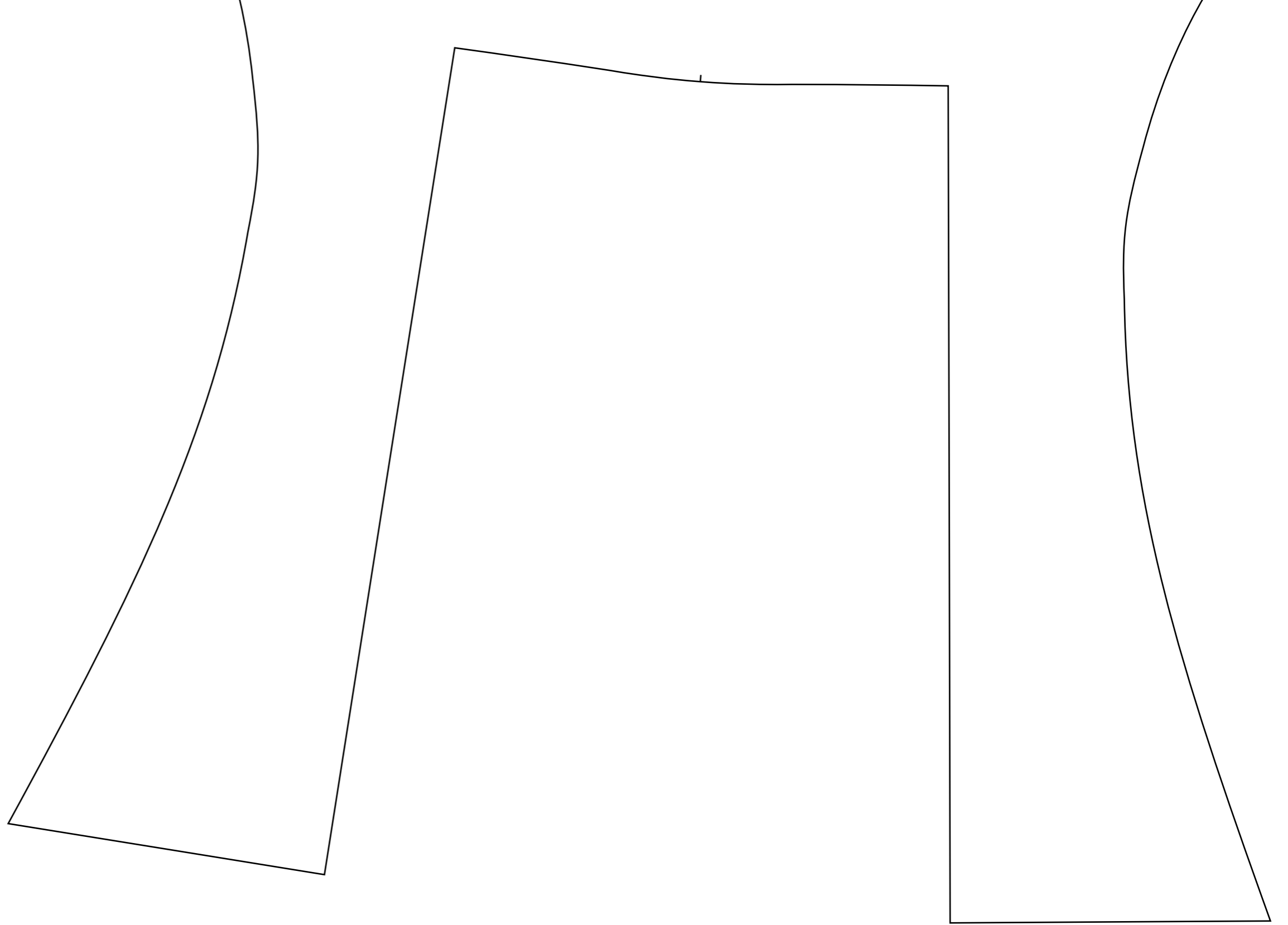


Flop this pattern for the other side

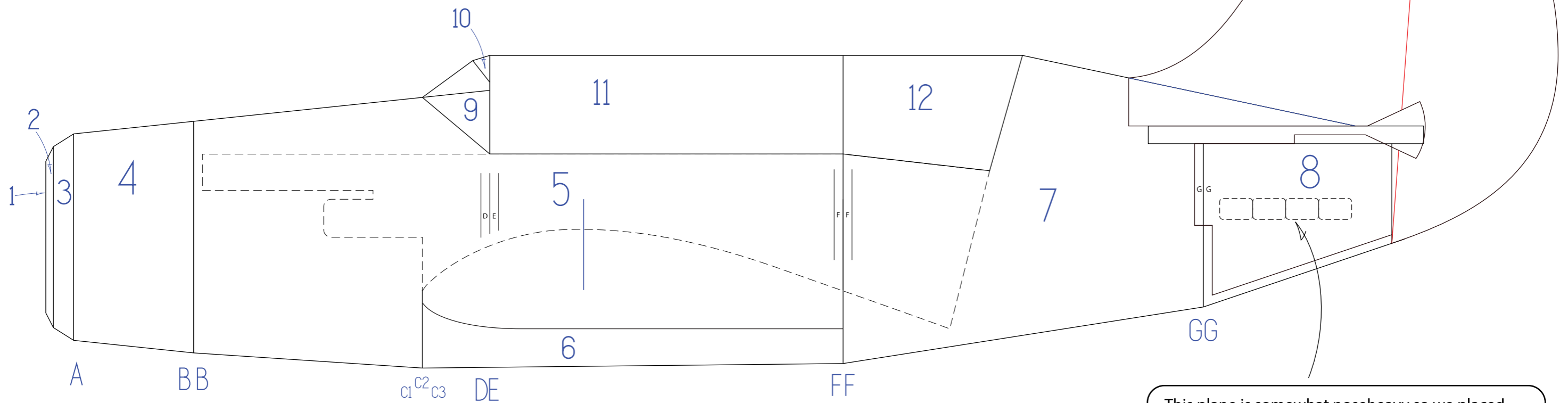




Copyright ©2021 13thSquadron. All Rights Reserved.
Commercial use of our plans are prohibited.



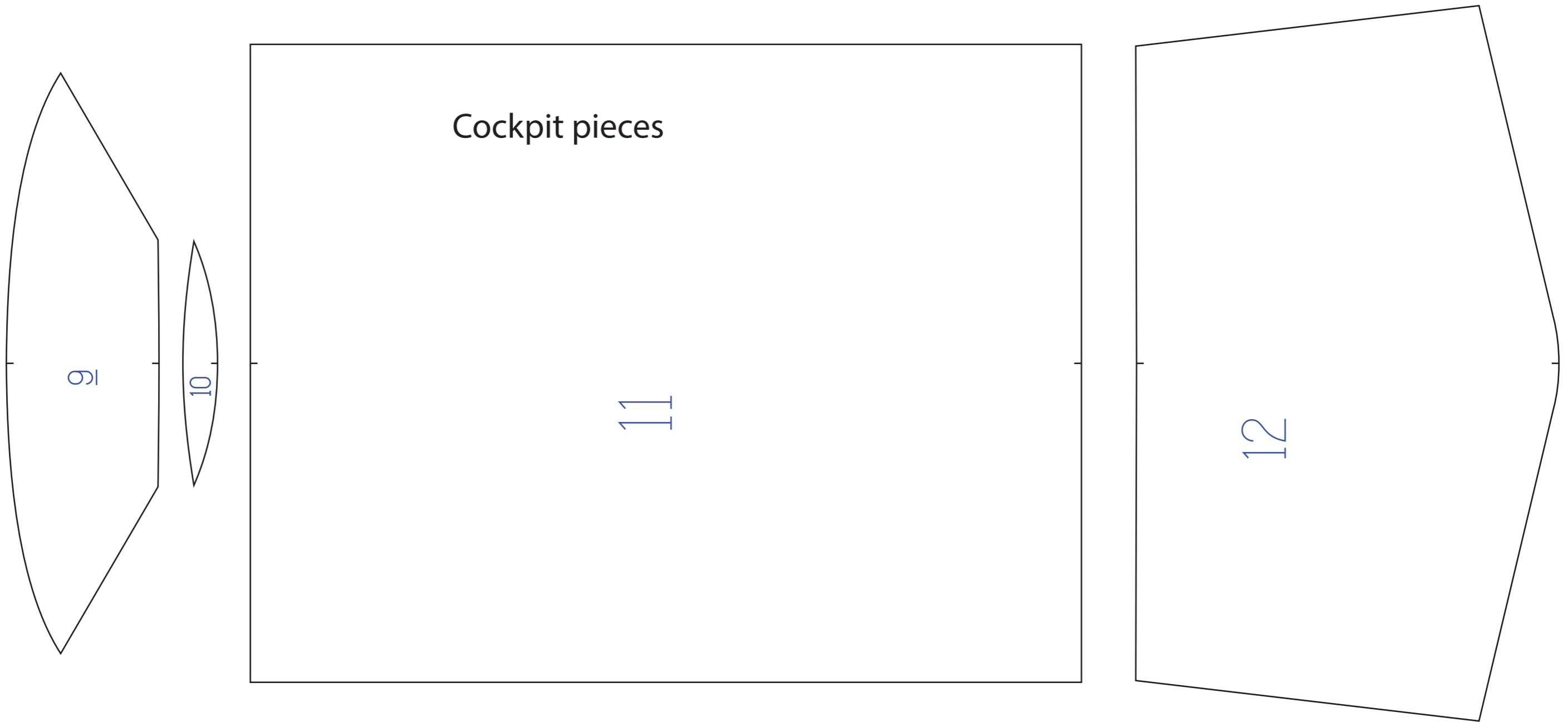
Follow the guide below to help you assemble the Helldiver. Please note that we only made one of these planes so far so keep in mind that some of the exterior "skin" pieces might not fit perfectly. We always recommend to "dry fit" the pieces first before glueing them into place. If they do not fit perfectly, we would suggest to make the adjustments accordingly and replace it with the new piece that you made.

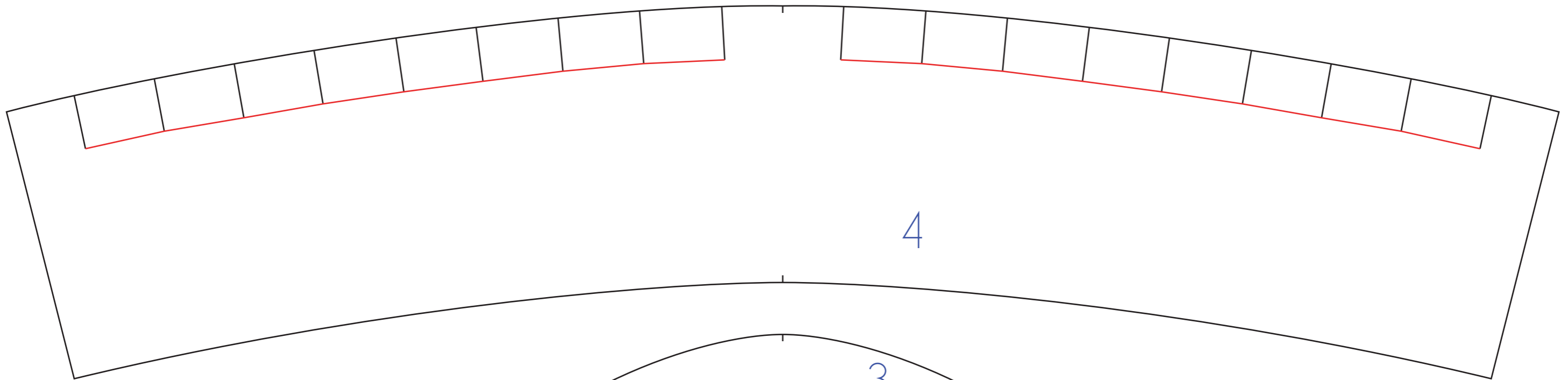


This plane is somewhat noseheavy so we placed four "Tire weights" here on each side to make the CG work. You might want to figure out the CG before glueing this piece on.

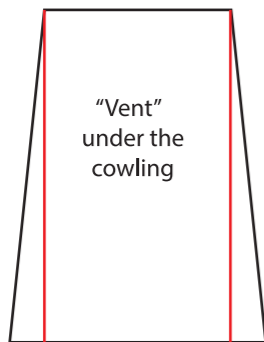
Each weight weighs .25 oz = 2 oz total of tailweight.

Copyright ©2021 13thSquadron. All Rights Reserved.
Commercial use of our plans are prohibited.

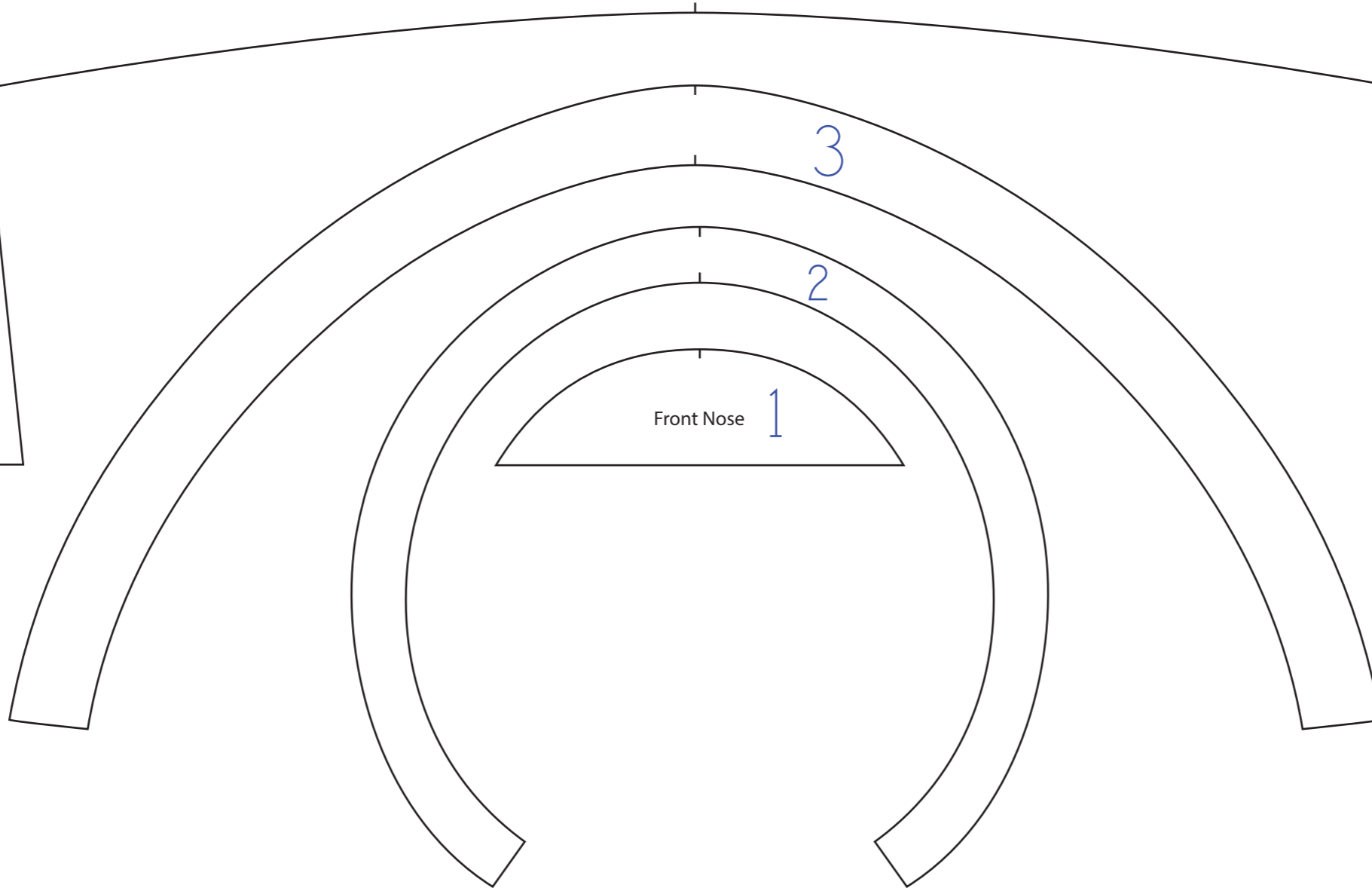




4



"Vent"
under the
cowling



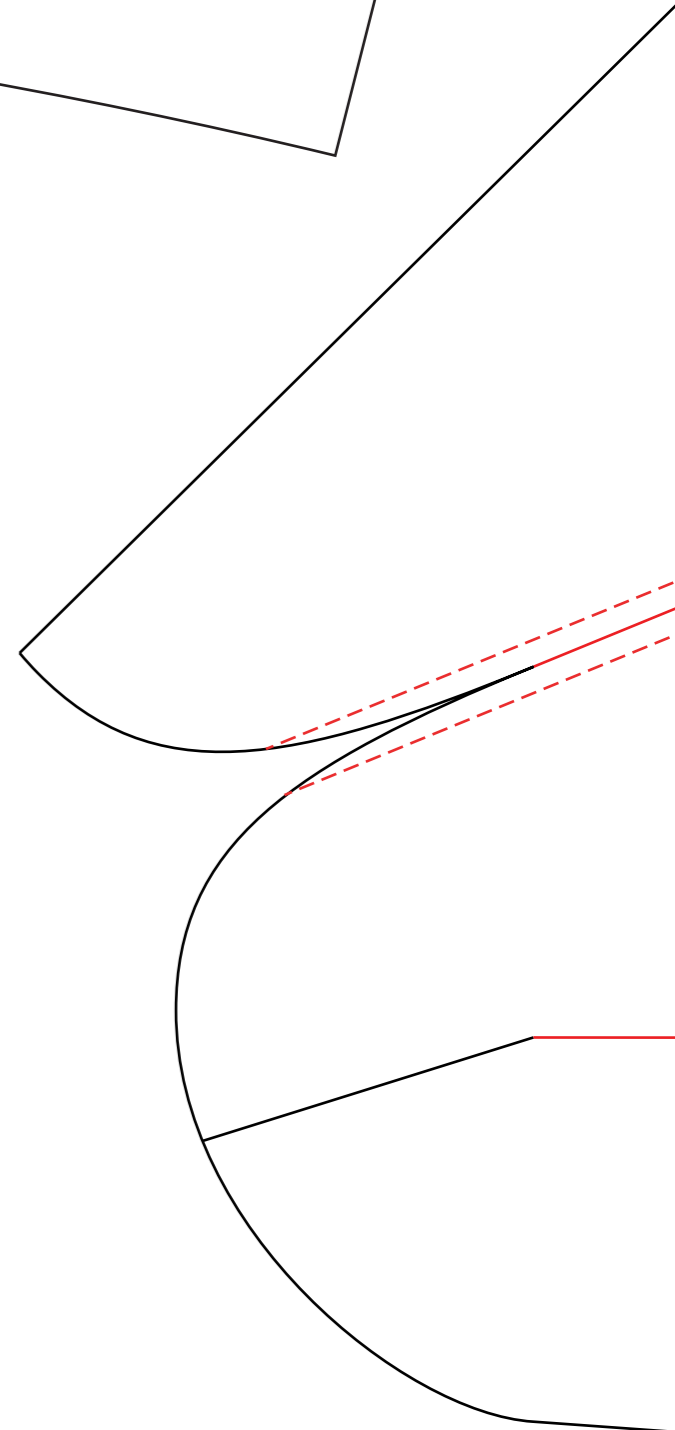
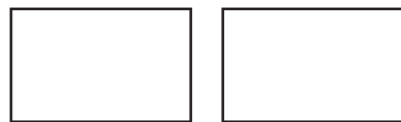
Front Nose

1

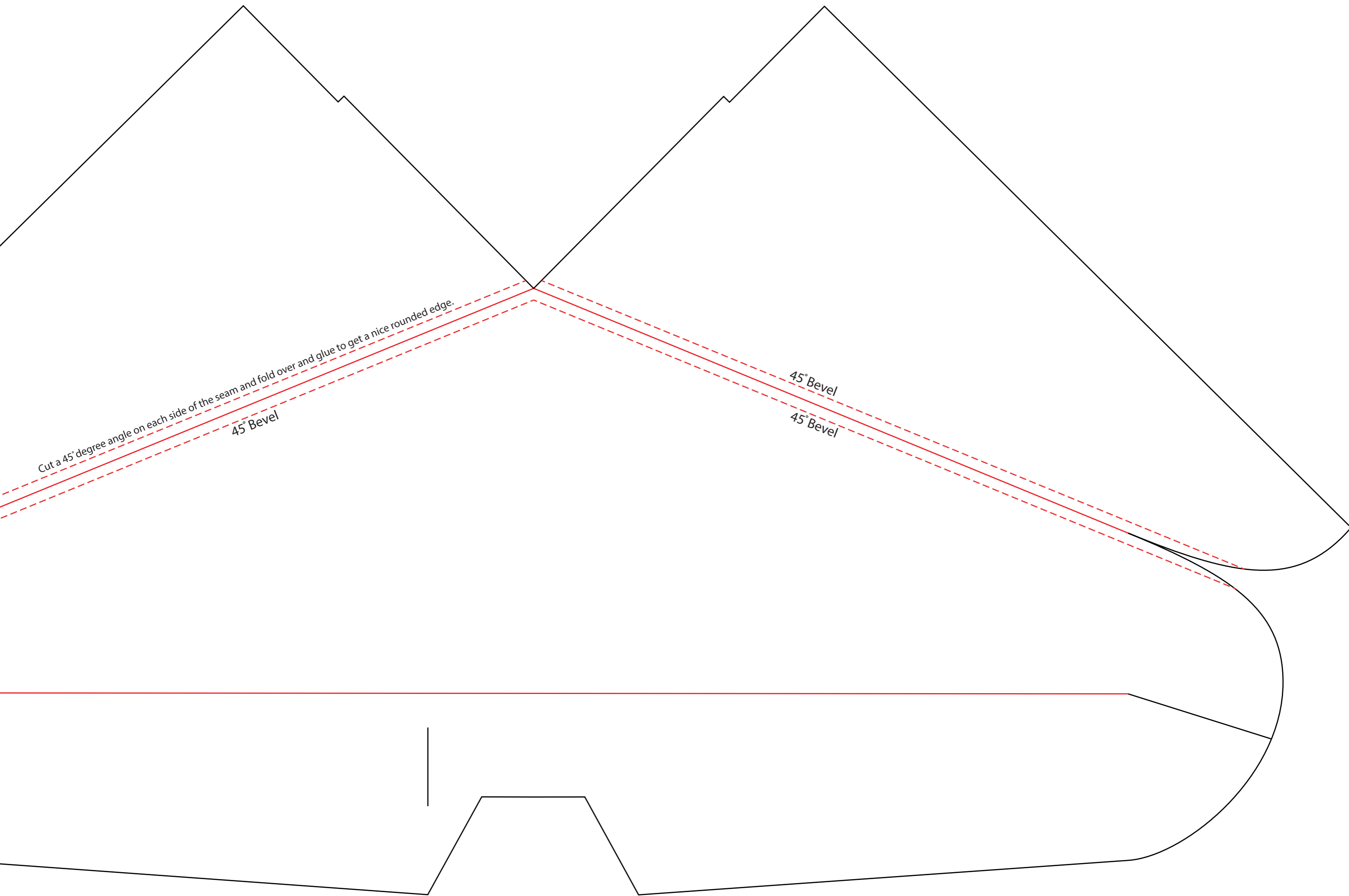
2

3

Engine Flaps
under the cowling



Copyright ©2021 13thSquadron. All Rights Reserved.
Commercial use of our plans are prohibited.



Cut a 45° degree angle on each side of the seam and fold over and glue to get a nice rounded edge.

45° Bevel

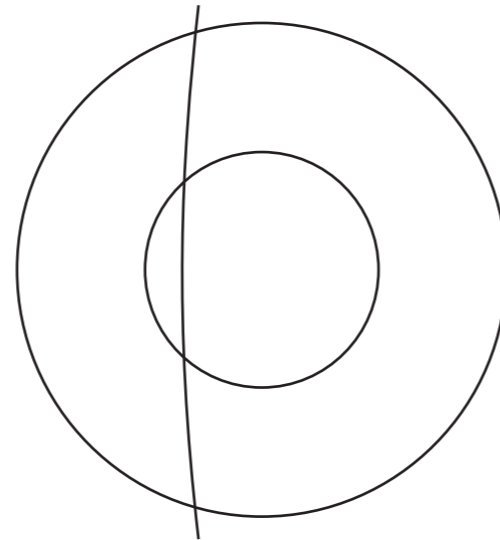
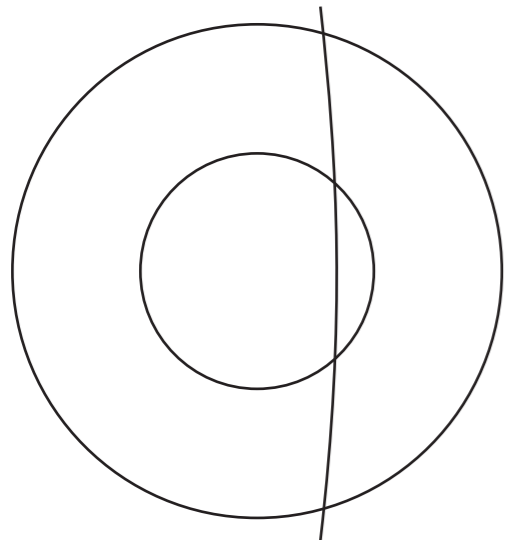
45° Bevel

45° Bevel

Fuselage Insignia



Wing Insignia



0123456789

Landing Gear Numbers

0123456789

Front Cowling Numbers

0123456789

Vertical Stab Numbers