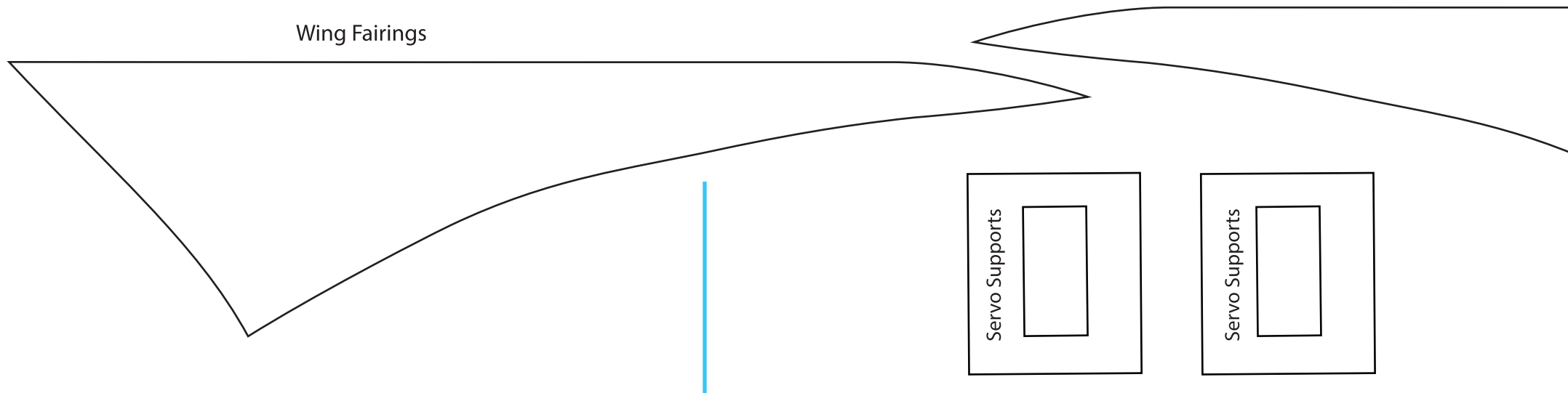
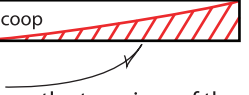


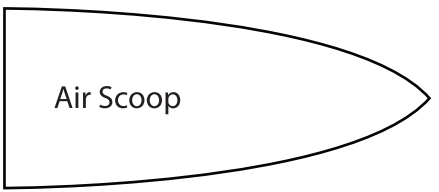
Wing Fairings



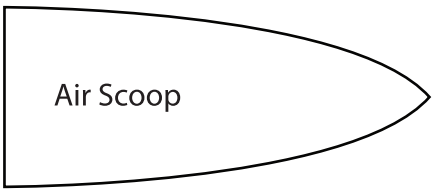
Side View of Top Air Scoop



Trim the foam here on the top piece of the Air scoop to help give it its shape.



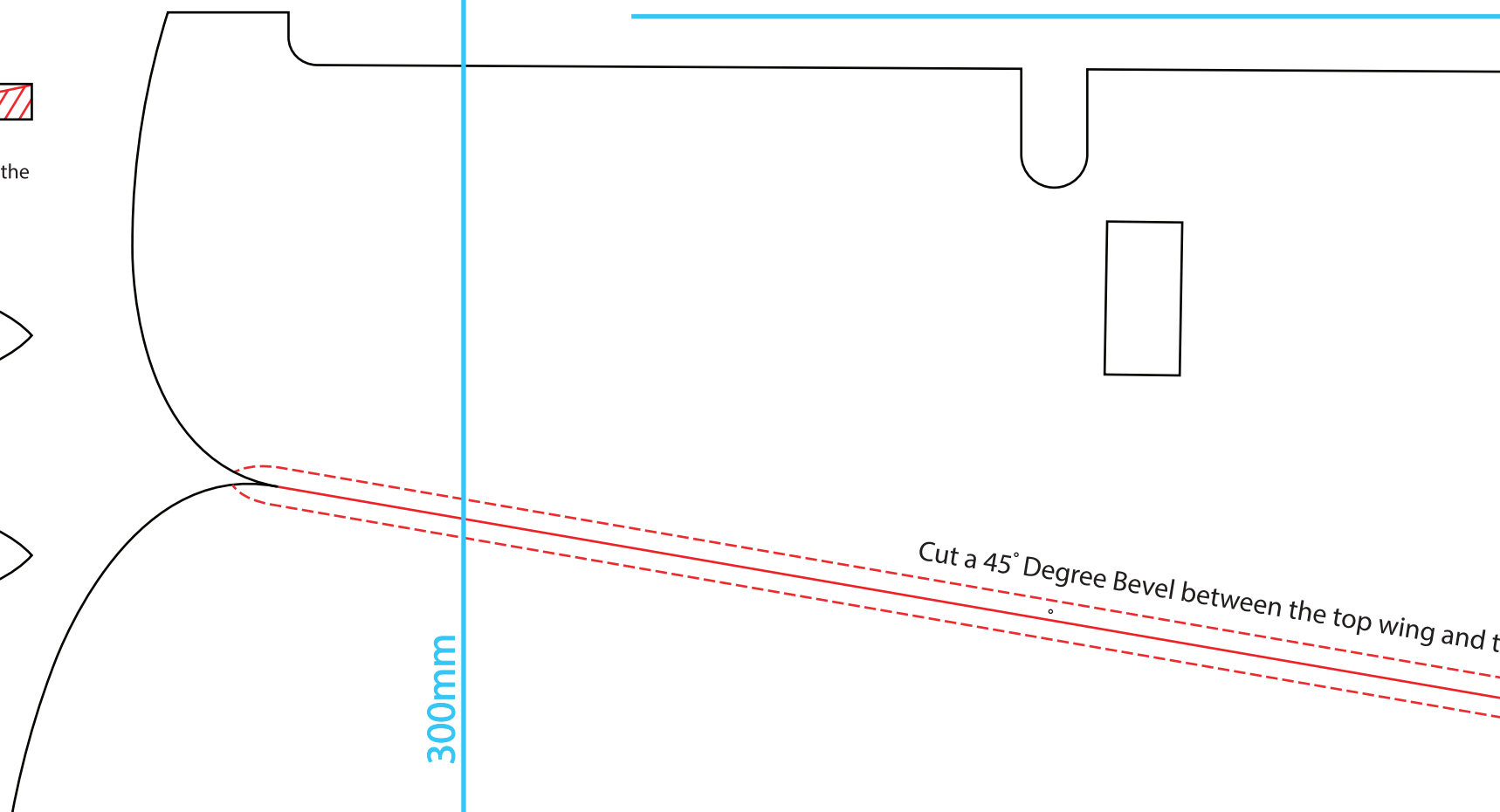
Air Scoop

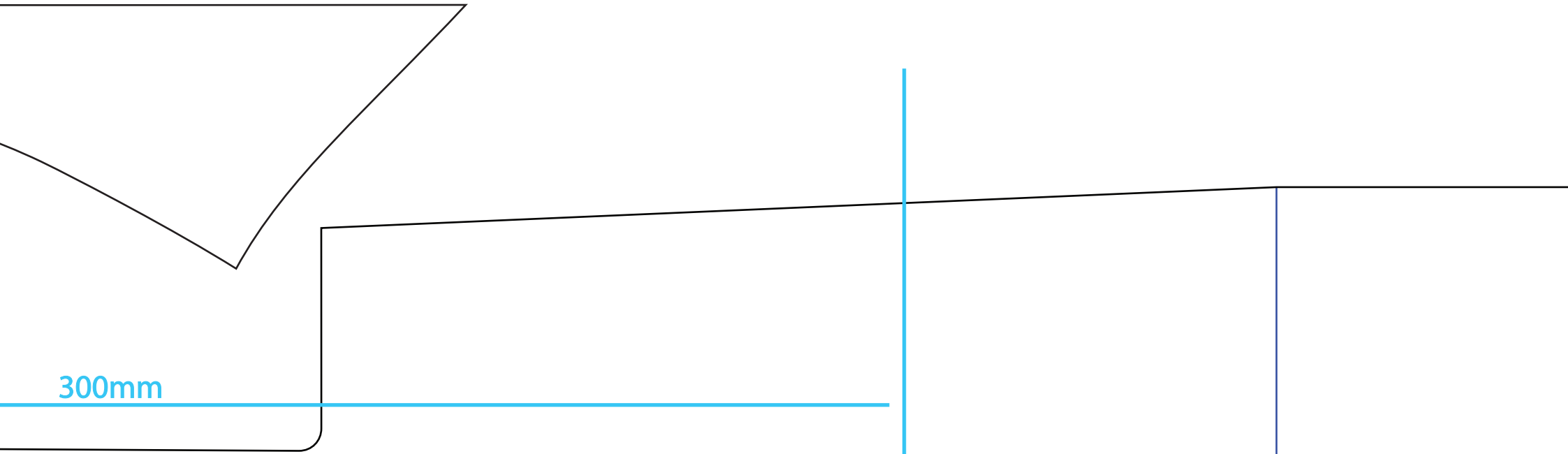


Air Scoop

300mm

Cut a 45° Degree Bevel between the top wing and t



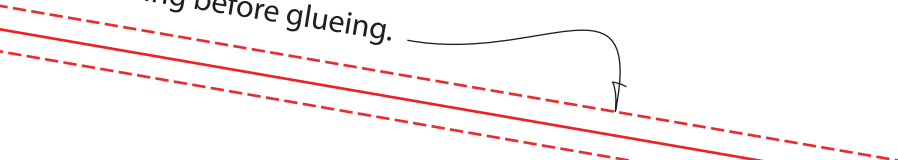
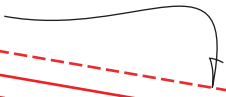


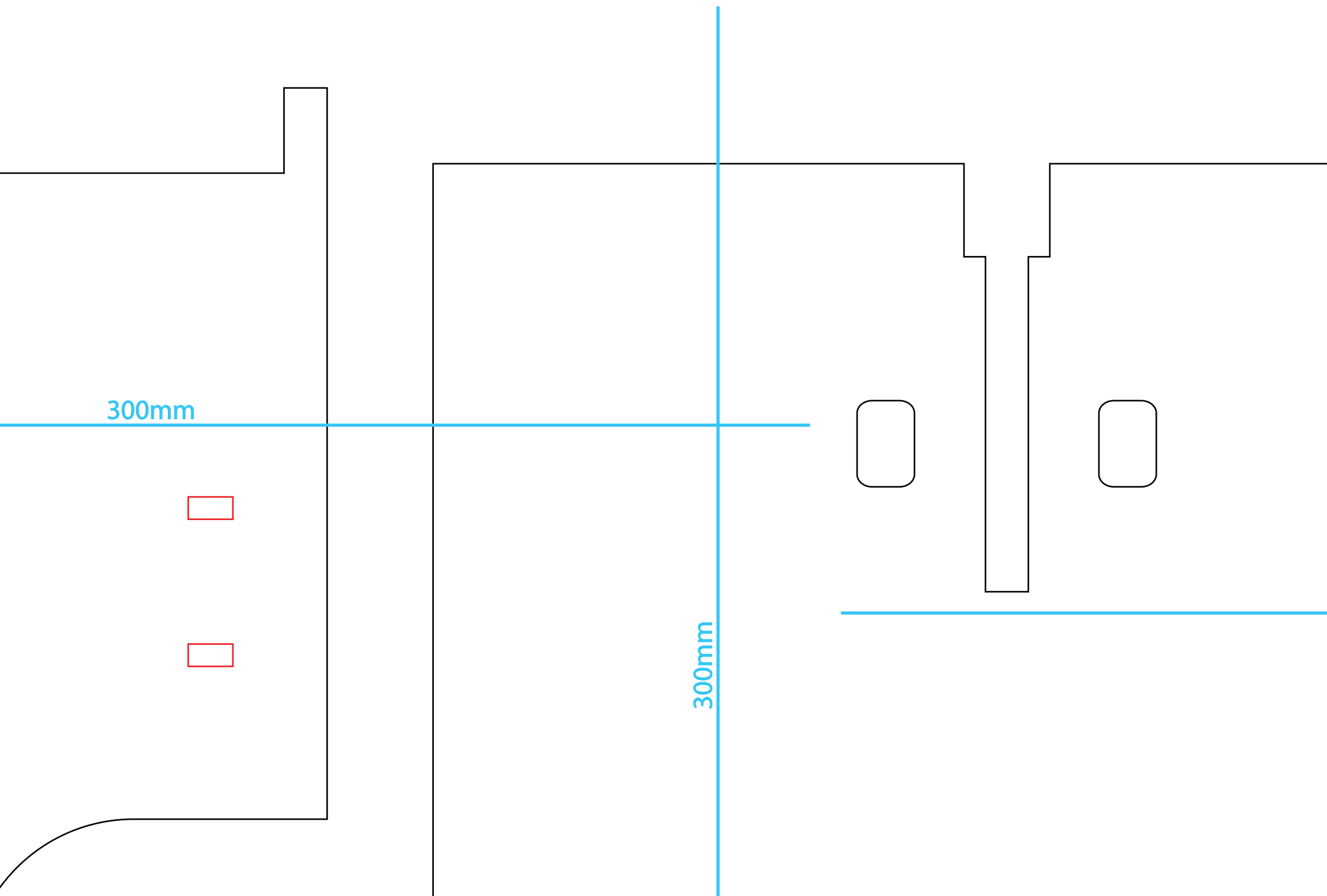
300mm



300mm

the lower wing before glueing.





300mm

Piece
needed
for the
Hatch

G

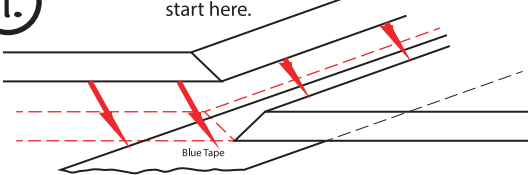
Use this piece
to help shape the canopy.
This goes in the front of the canopy.

J

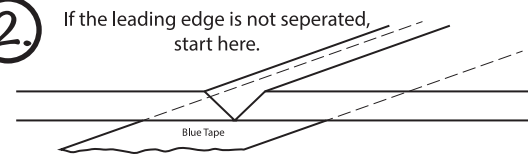
K

How to do the Leading Edges of the wings and elevator.

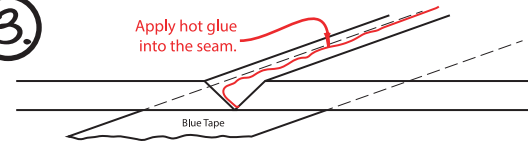
1. If the leading edge is seperated, start here.



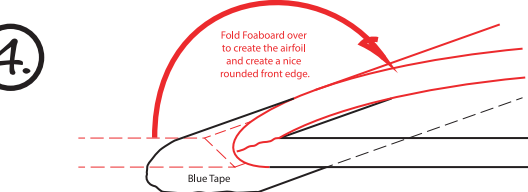
Blue Tape
2. If the leading edge is not seperated, start here.



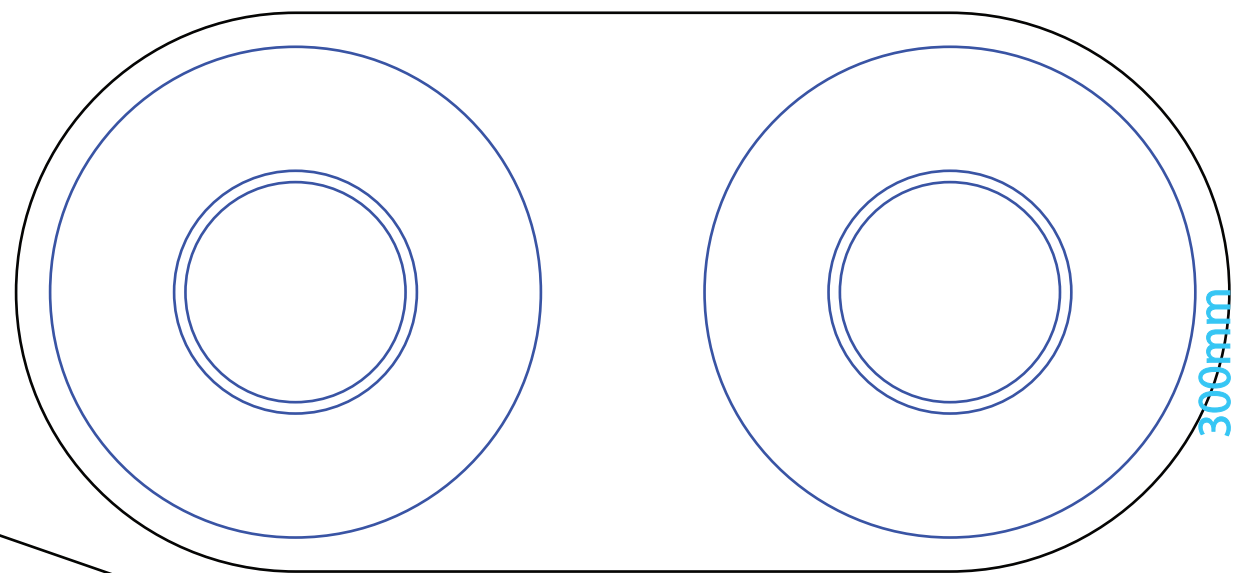
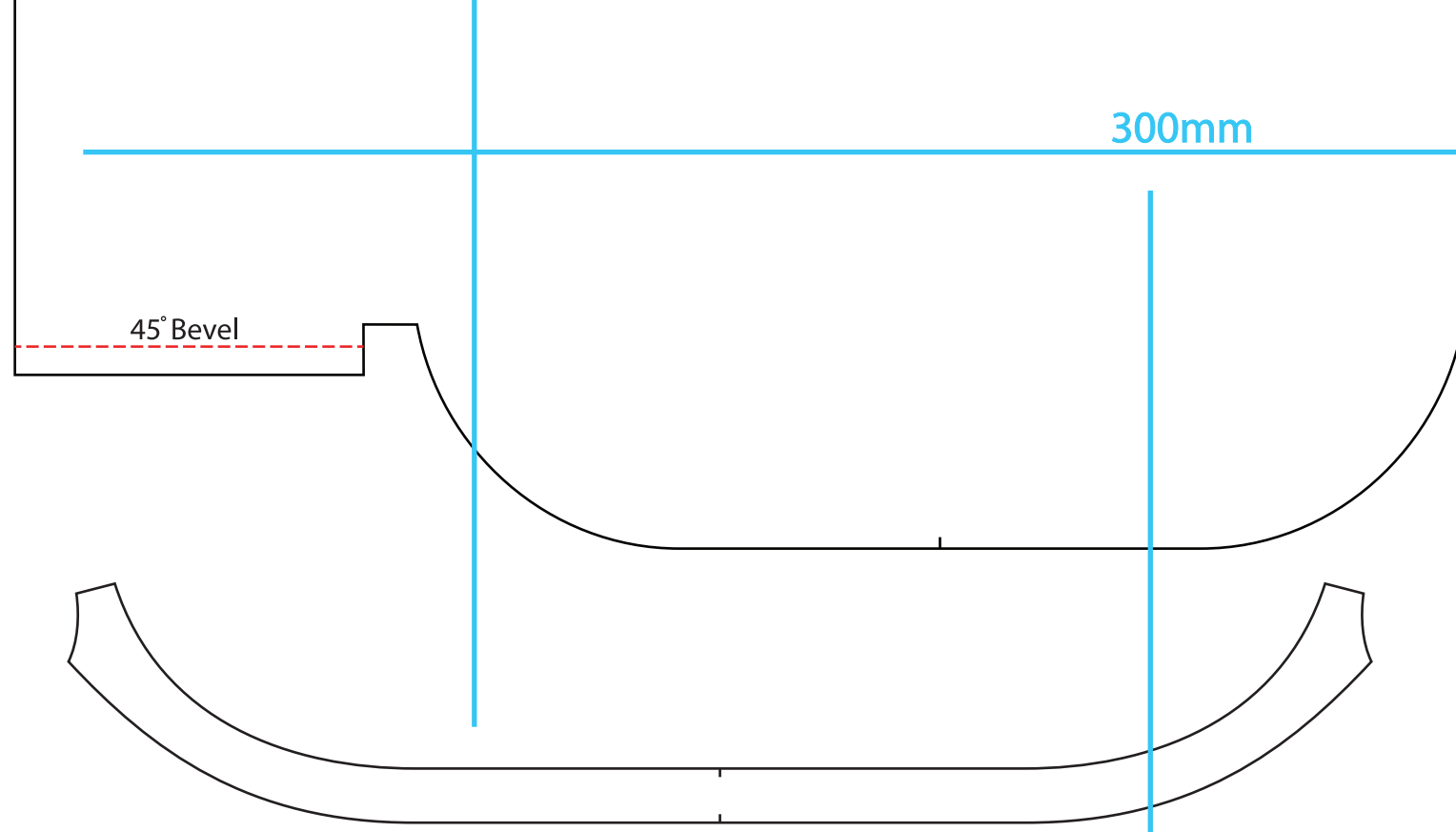
Blue Tape
3. Apply hot glue into the seam.

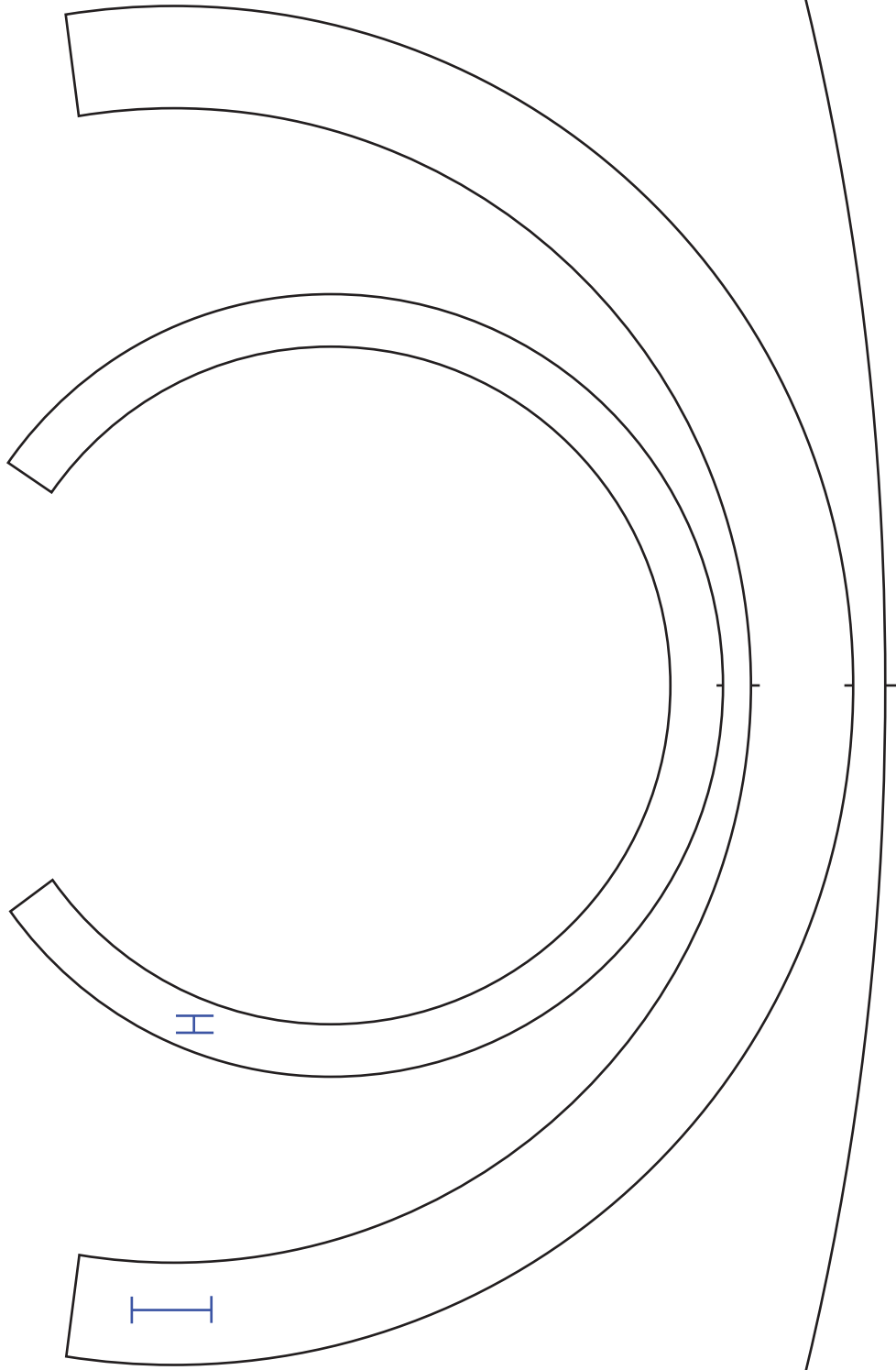


Blue Tape
4. Fold Fusboard over to create the airfoil and create a nice rounded front edge.



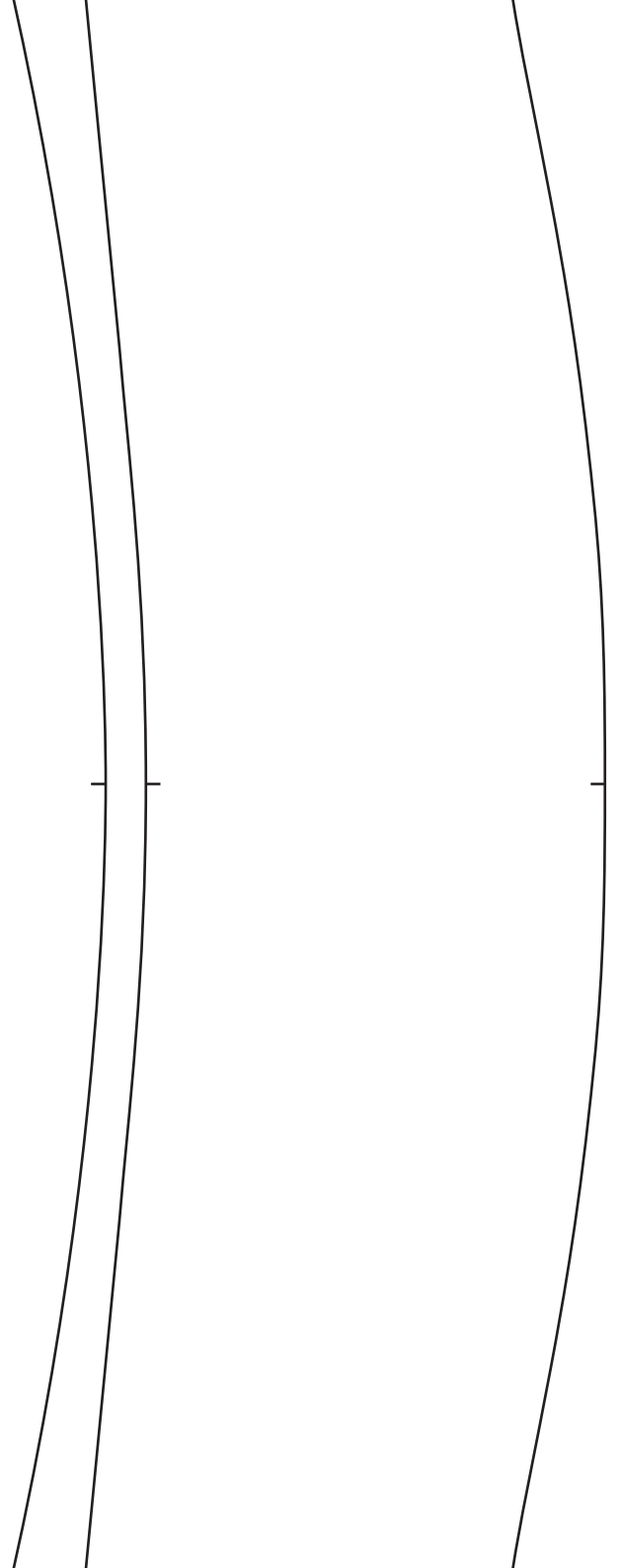
Blue Tape

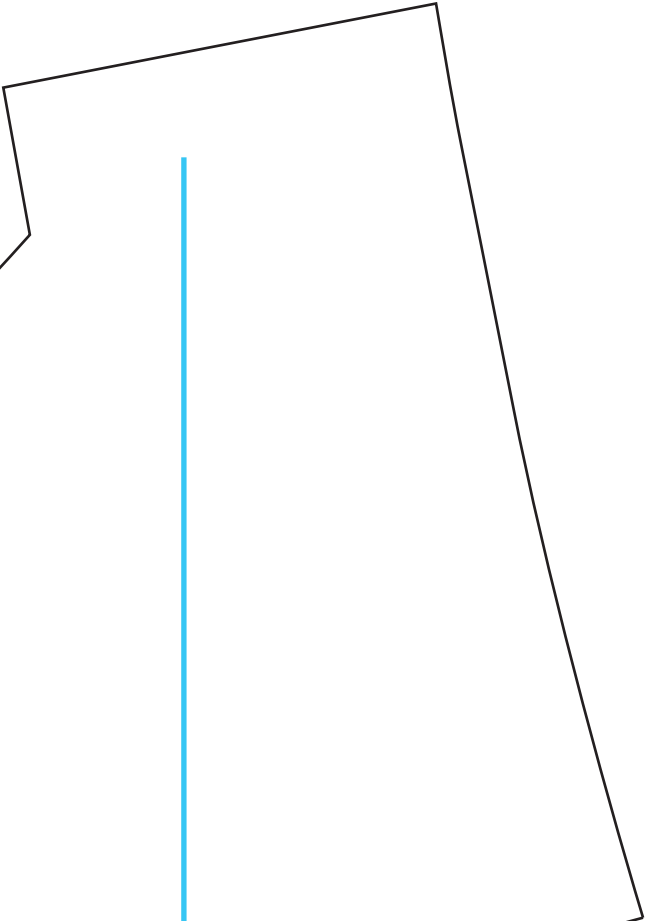
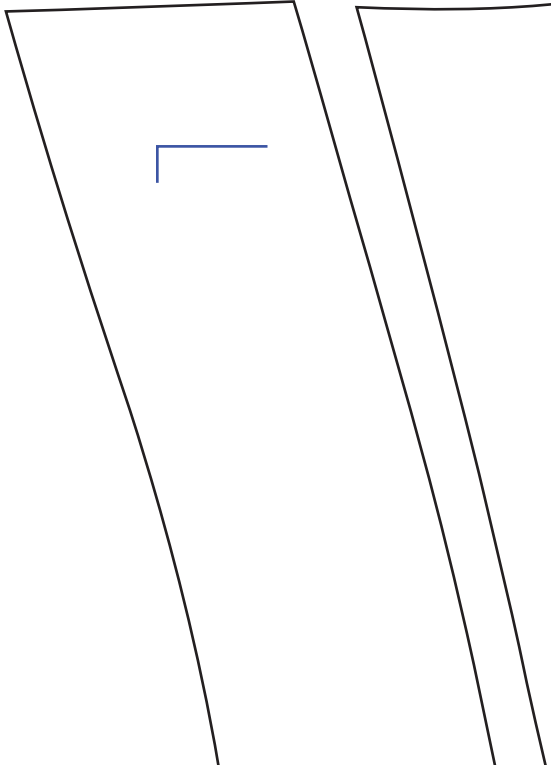




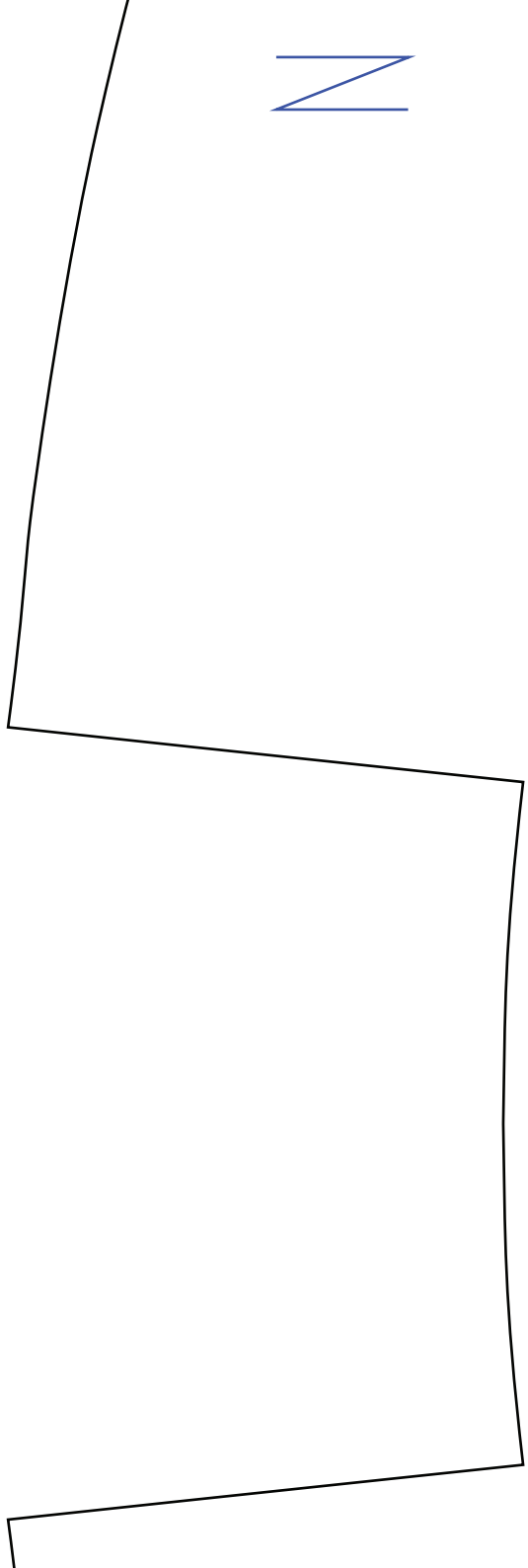
300mm

300mm

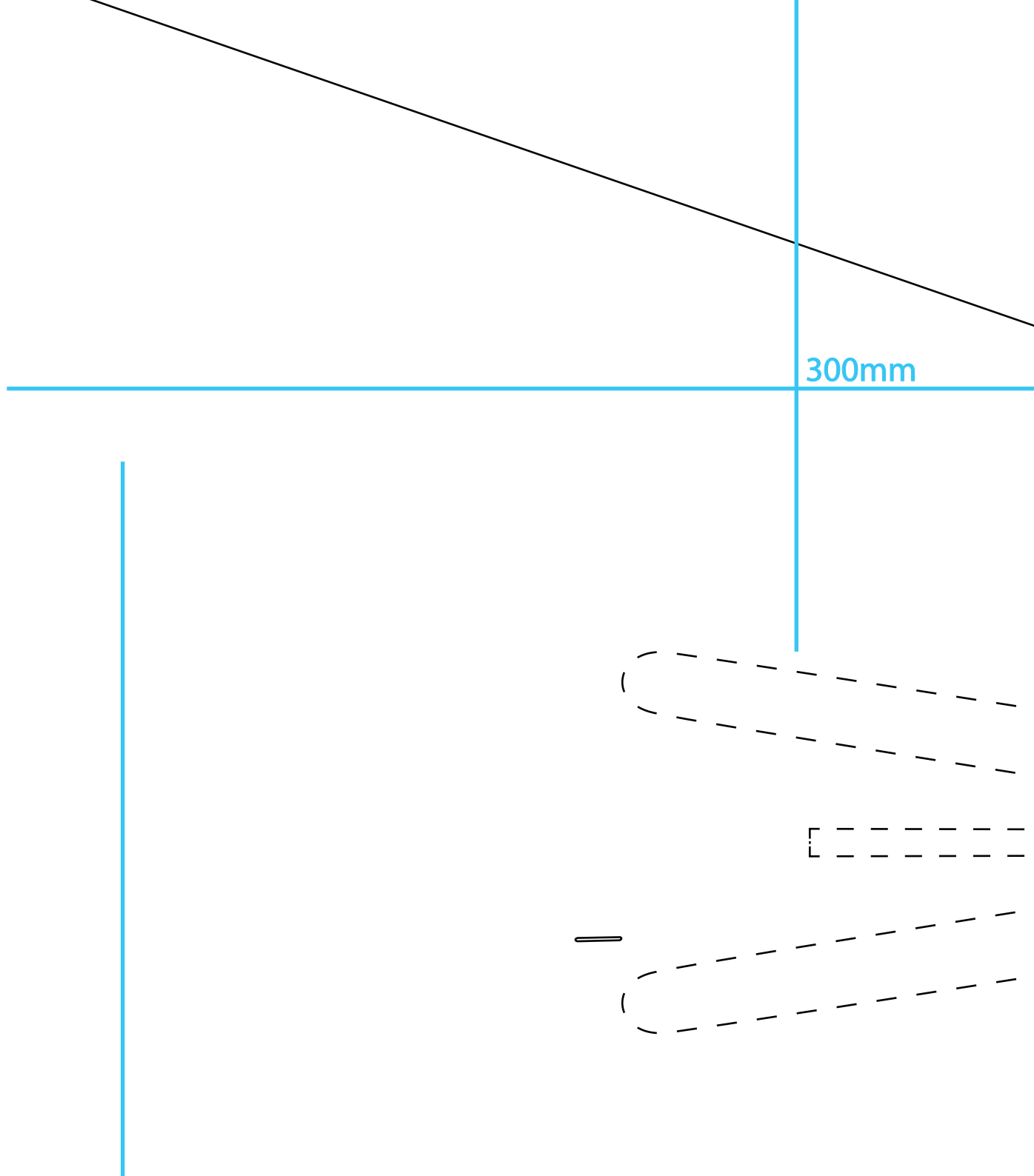




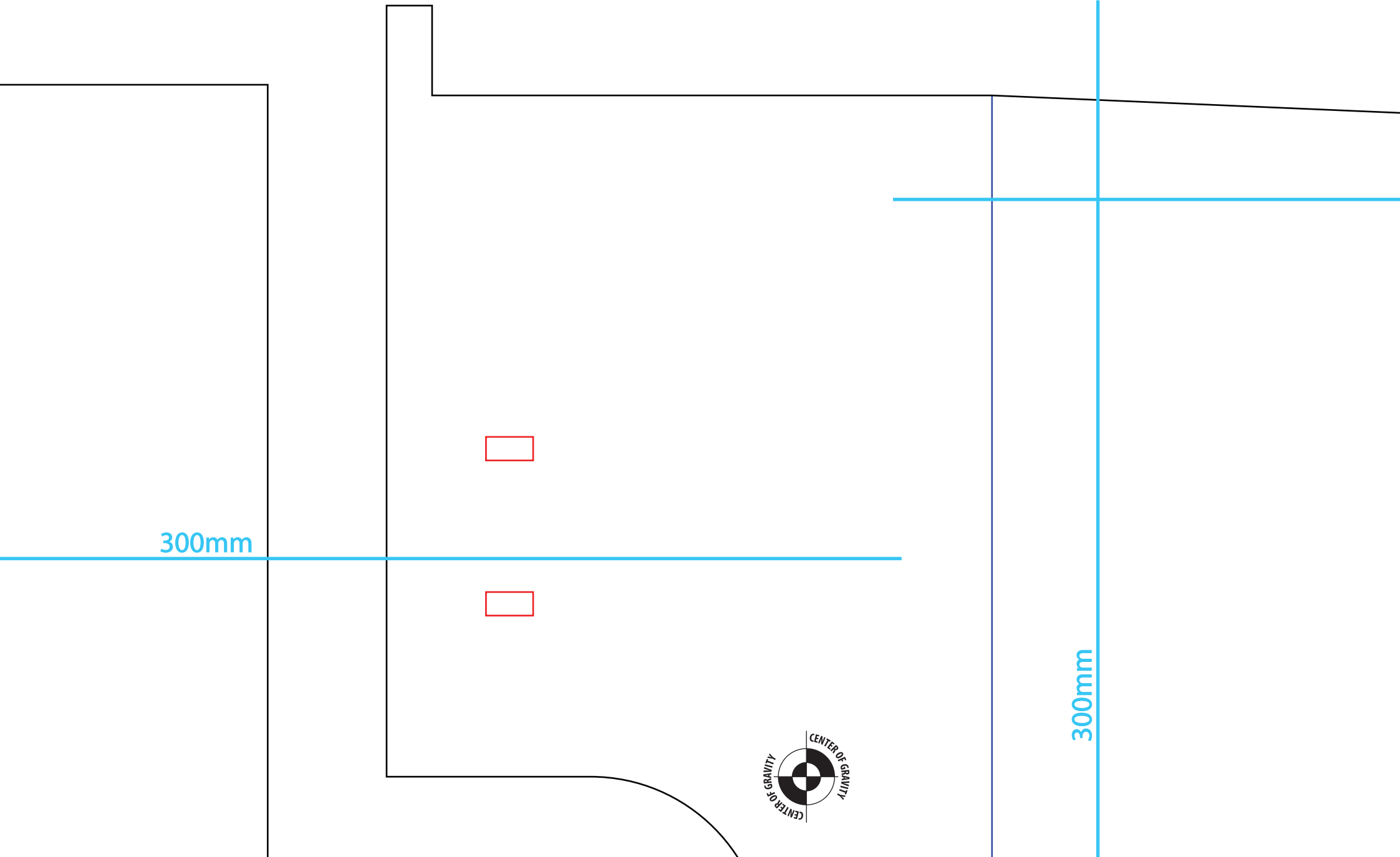
300mm



Z



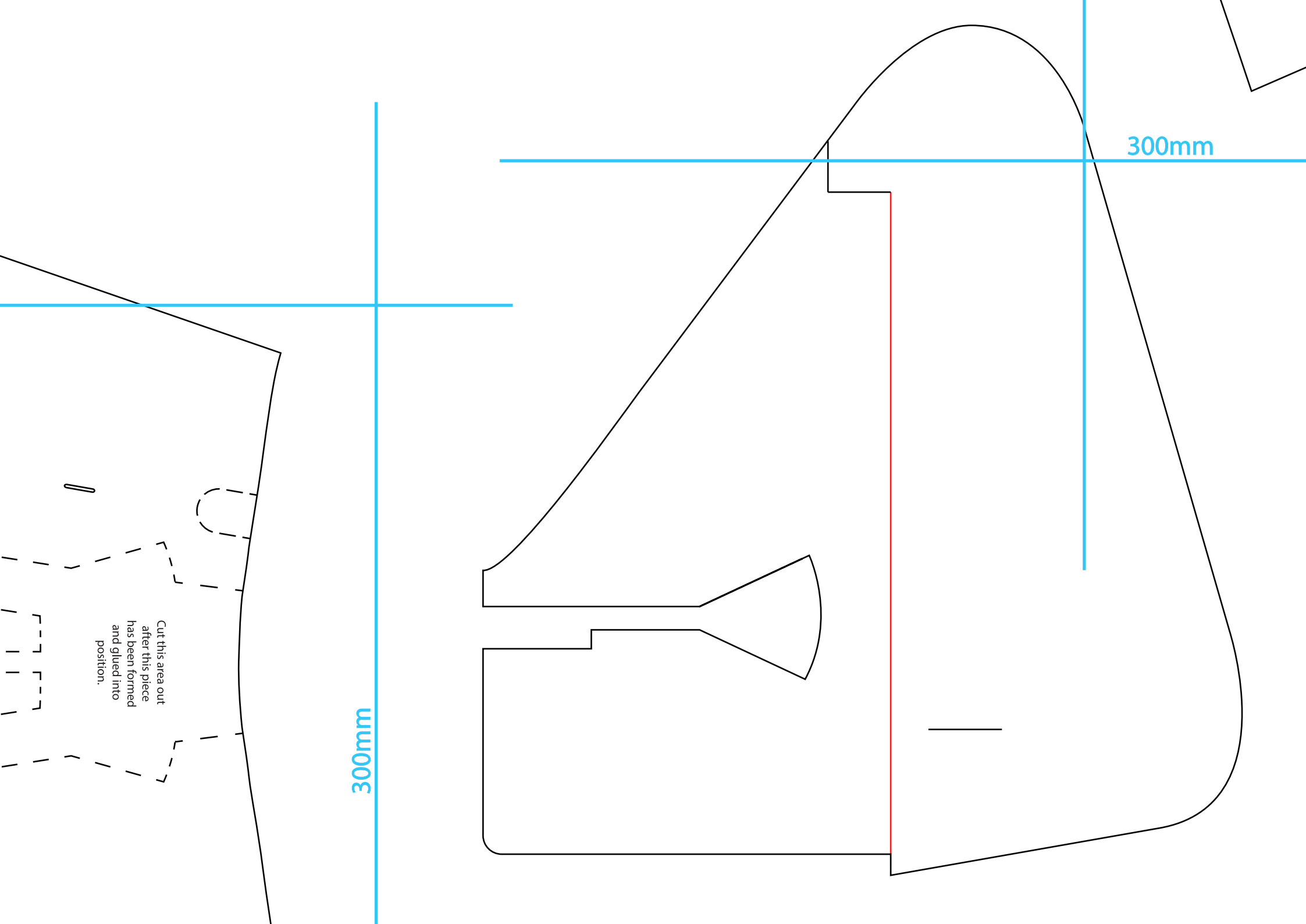
300mm



300mm

300mm

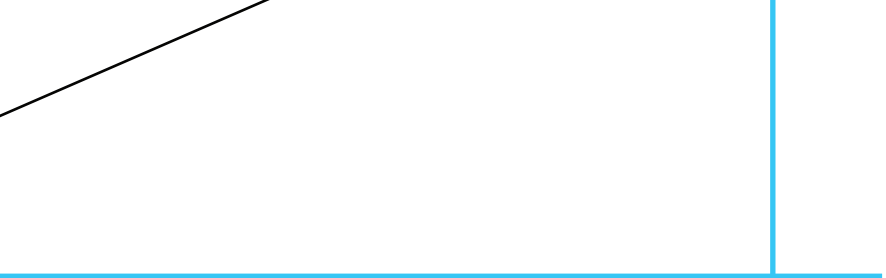




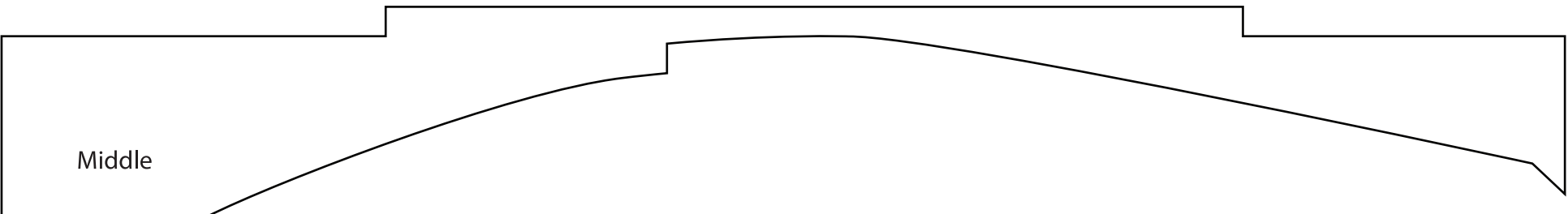
300mm

300mm

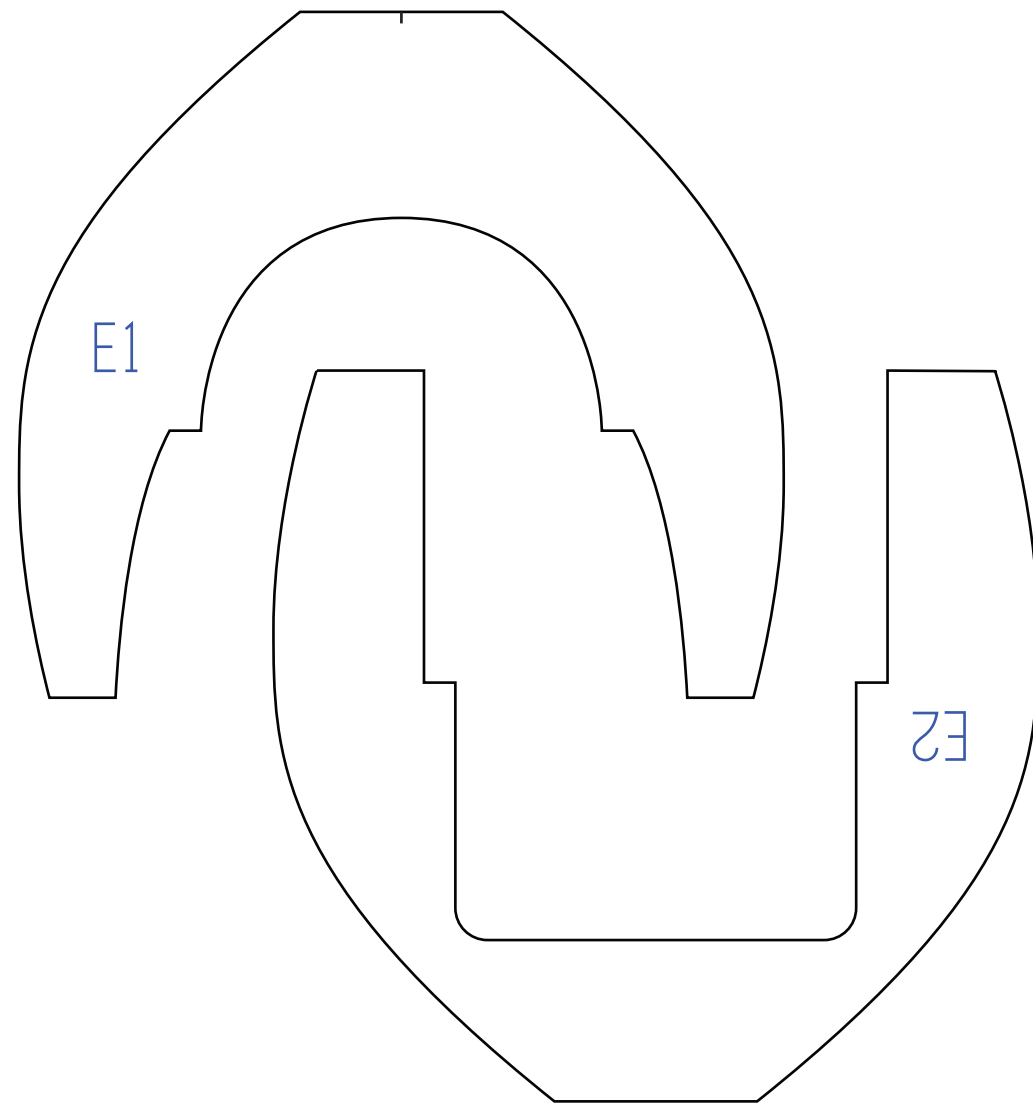
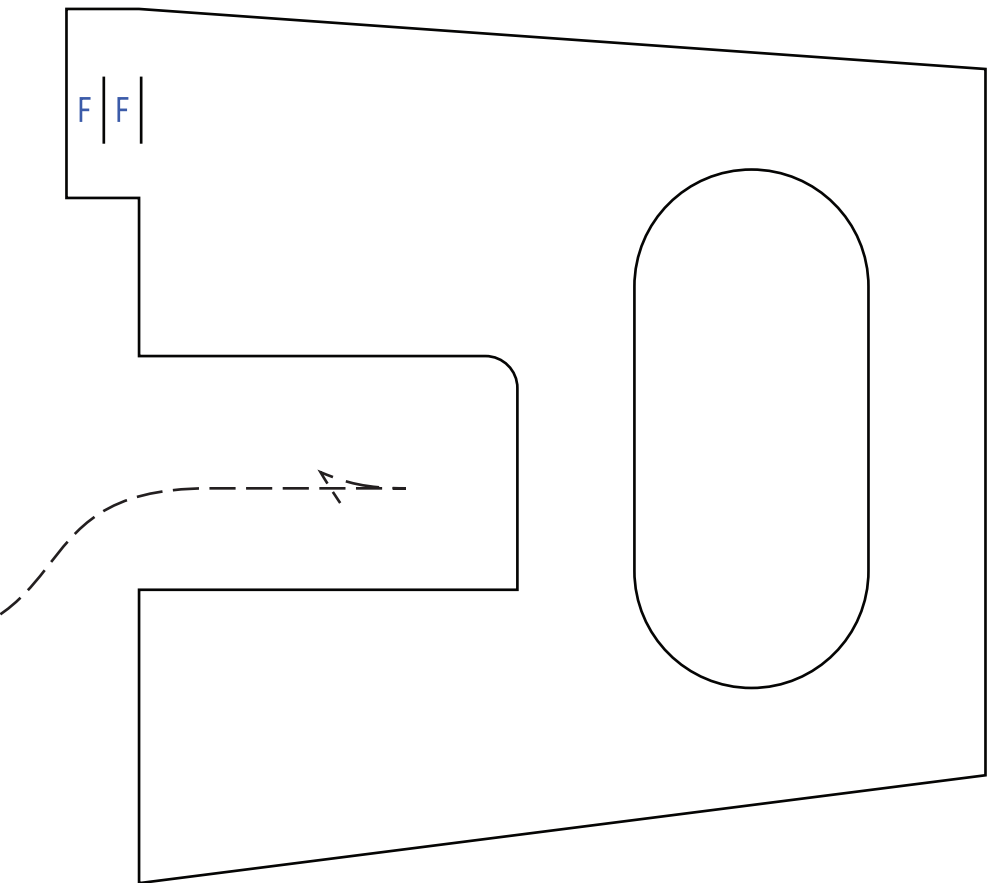
Cut this area out
after this piece
has been formed
and glued into
position.

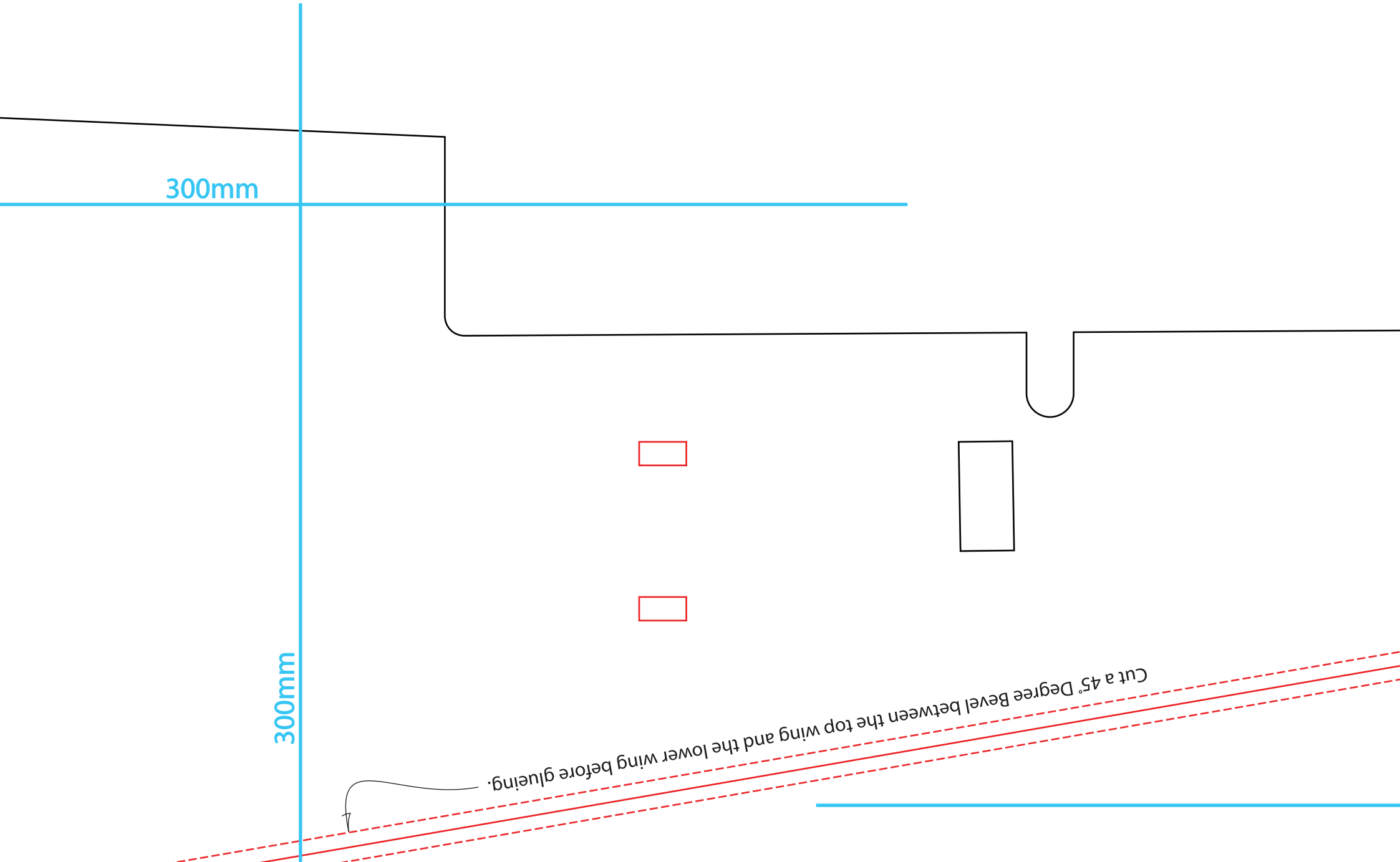


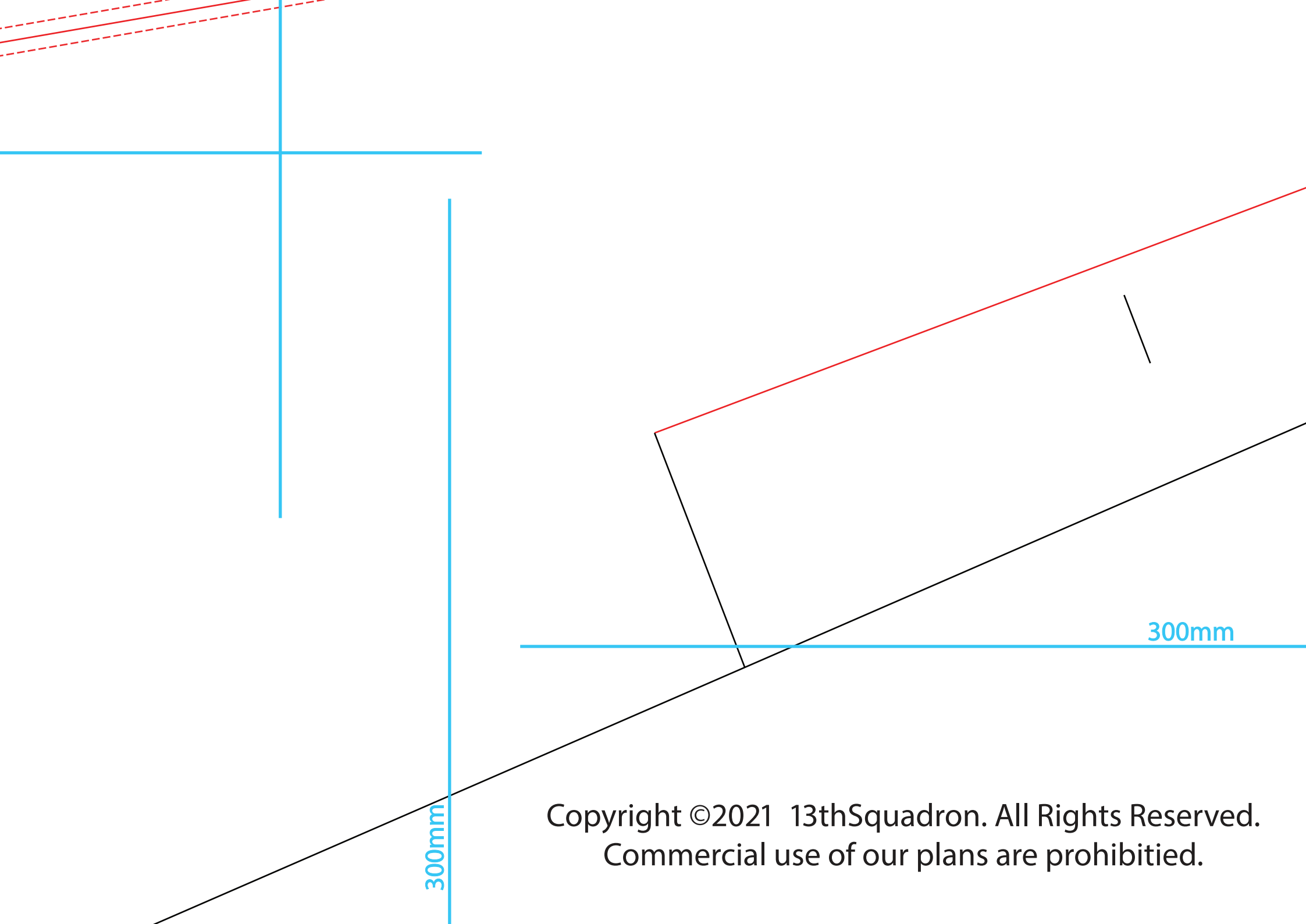
Once these two pieces are glued in an upside down "T", it gets glued here. -----



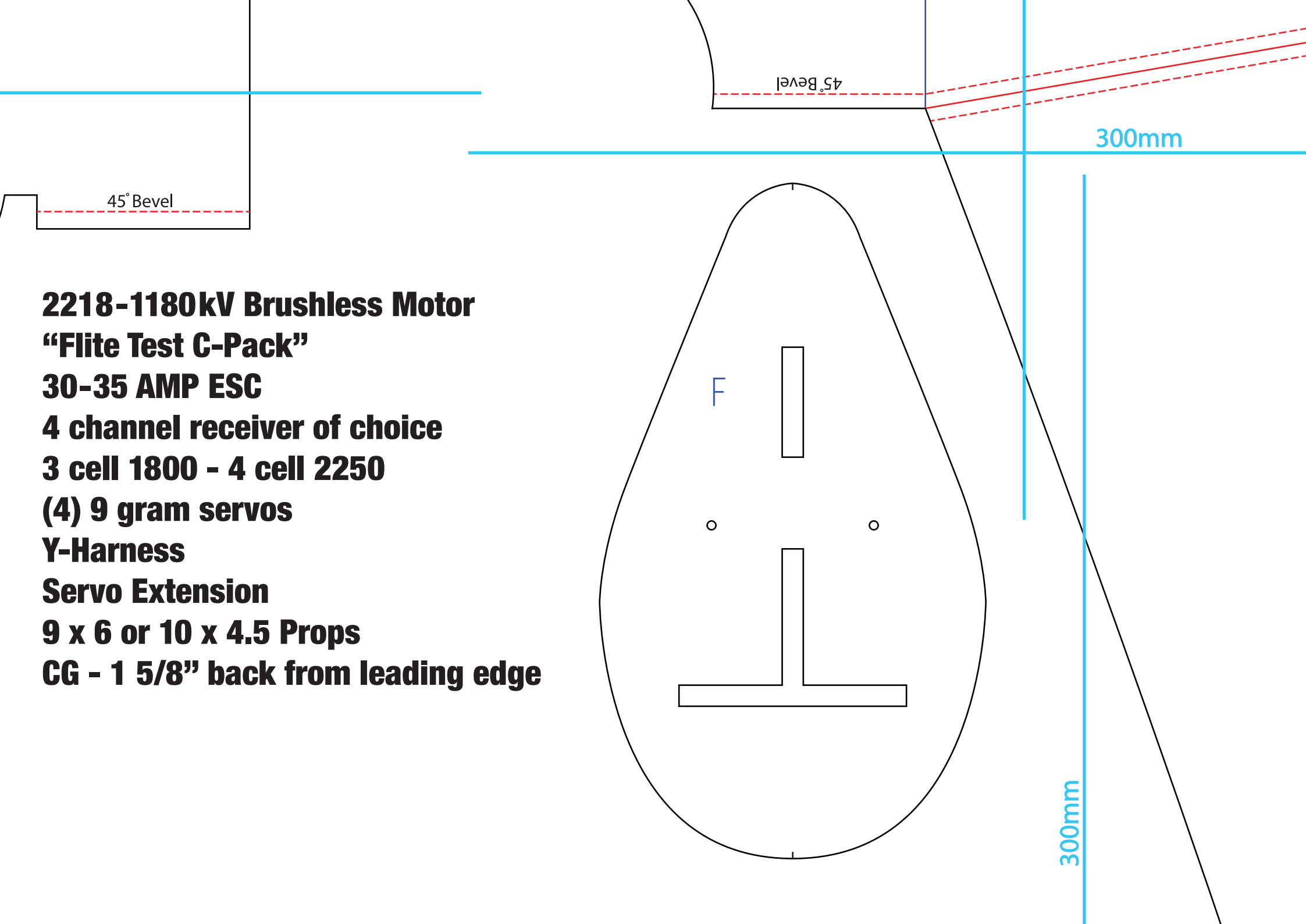
Middle



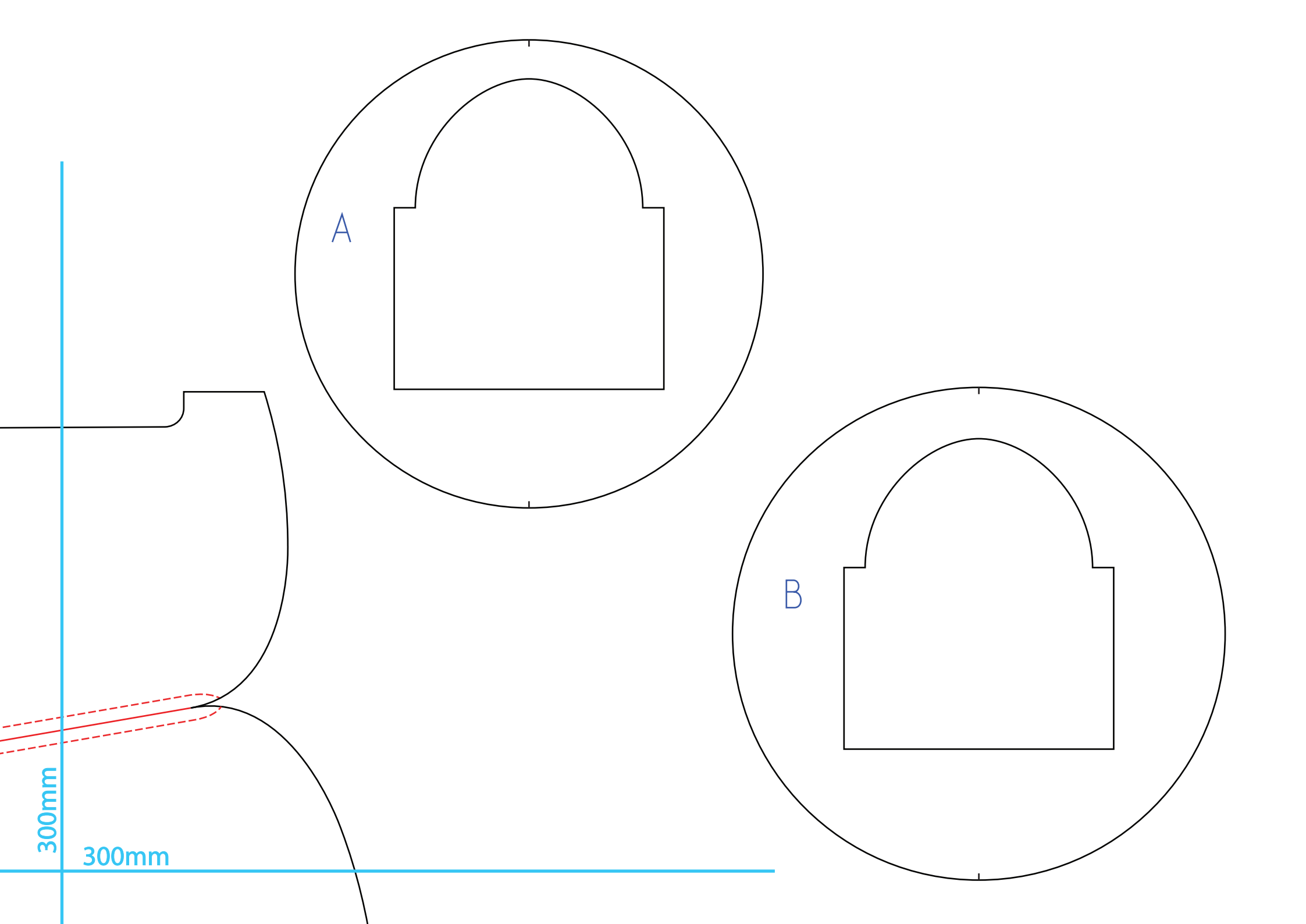


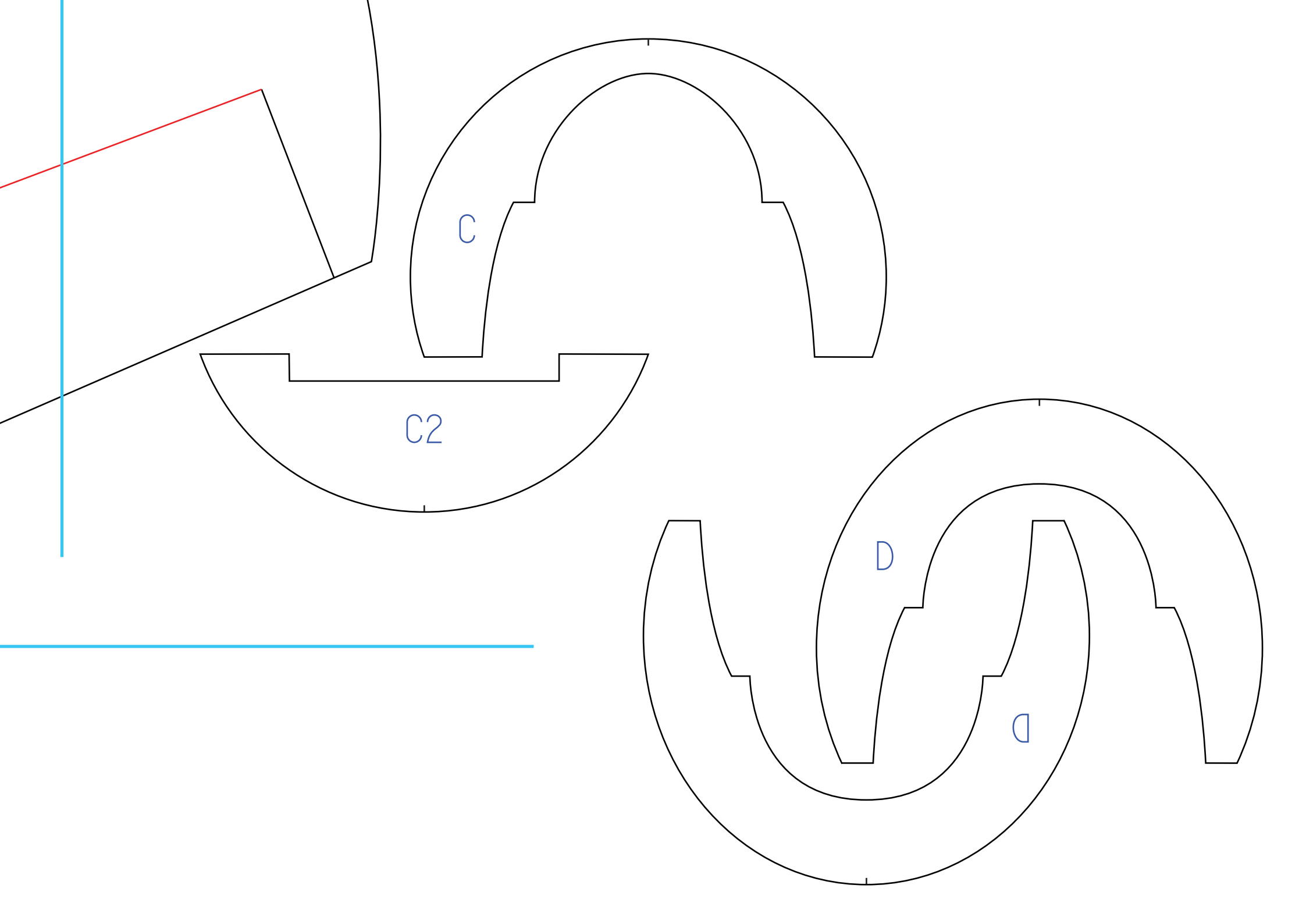


Copyright ©2021 13thSquadron. All Rights Reserved.
Commercial use of our plans are prohibited.

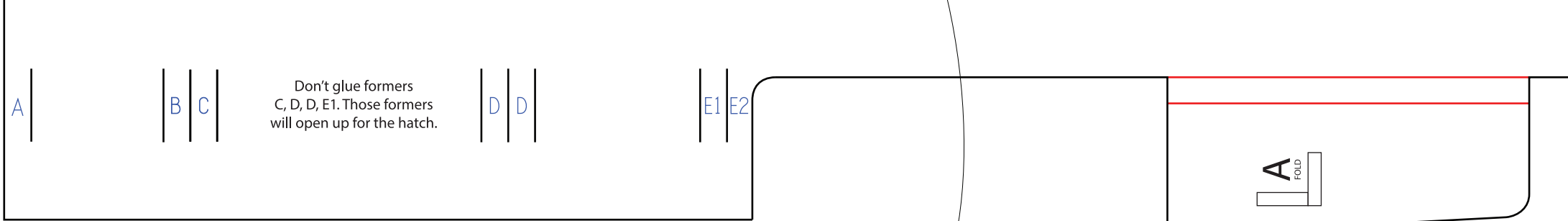
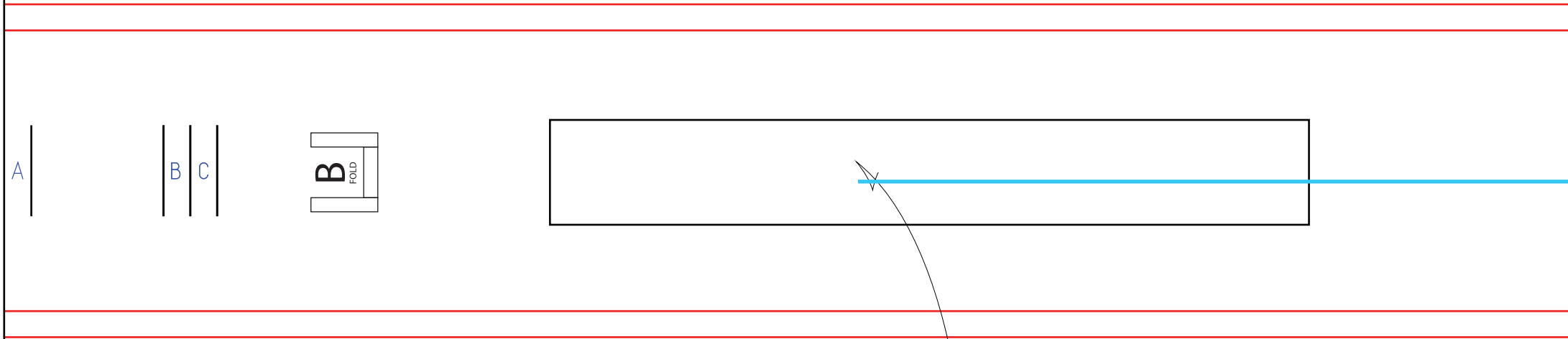
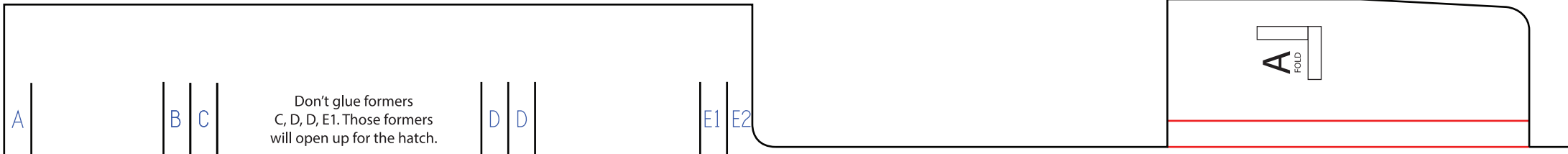
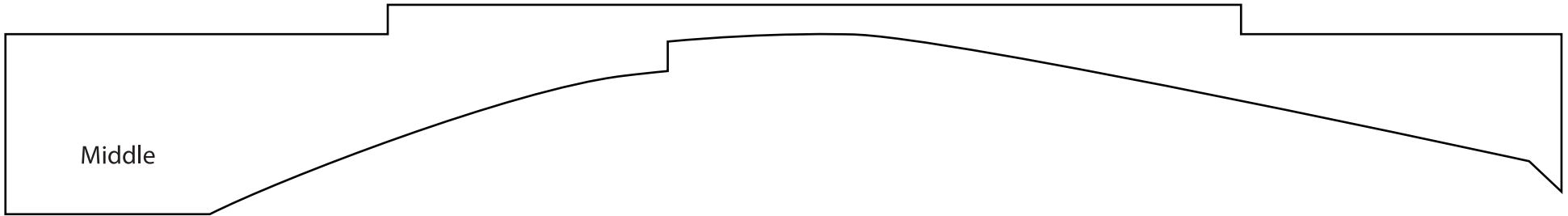


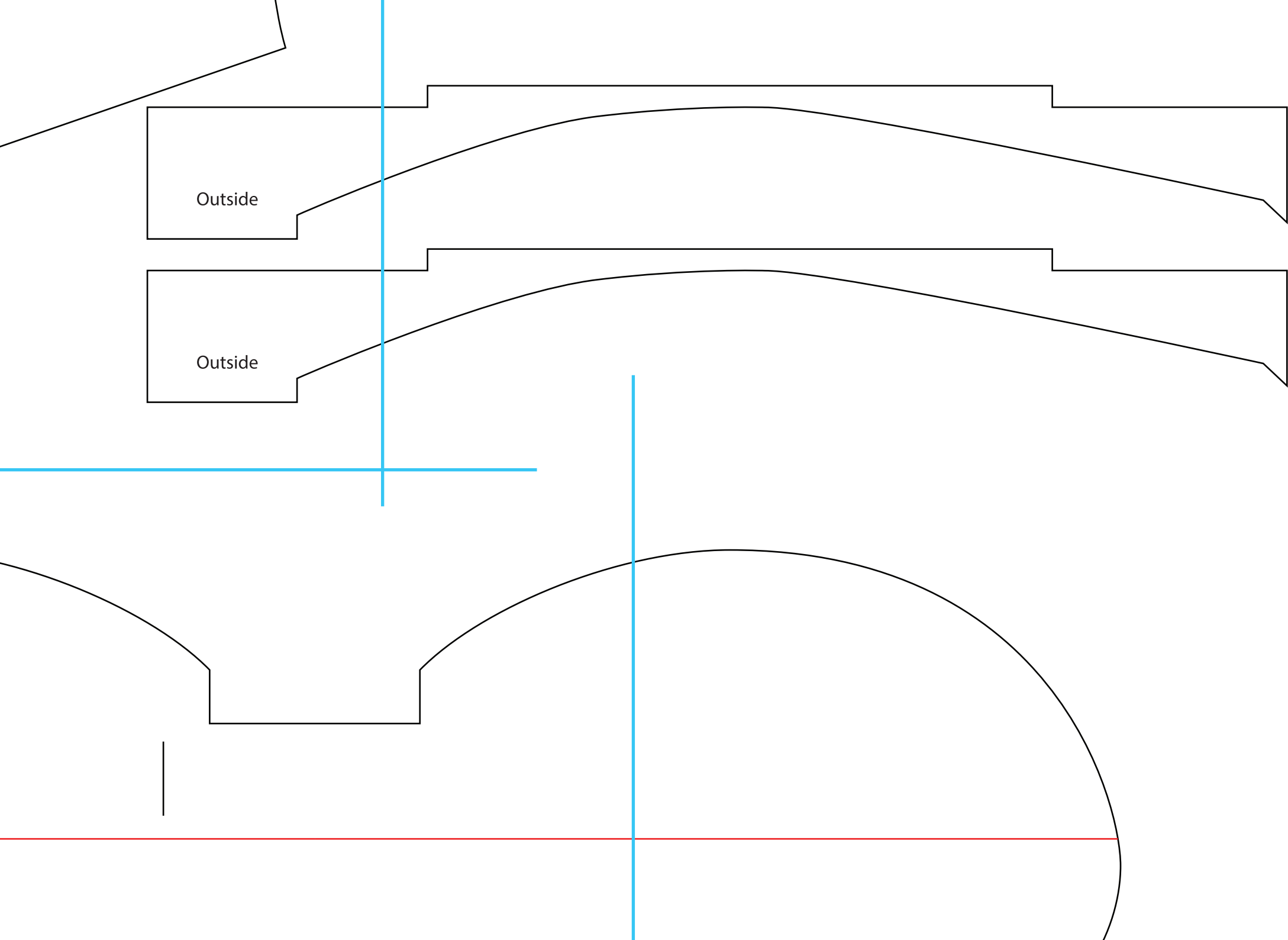
- 2218-1180kV Brushless Motor**
- “Flite Test C-Pack”**
- 30-35 AMP ESC**
- 4 channel receiver of choice**
- 3 cell 1800 - 4 cell 2250**
- (4) 9 gram servos**
- Y-Harness**
- Servo Extension**
- 9 x 6 or 10 x 4.5 Props**
- CG - 1 5/8” back from leading edge**





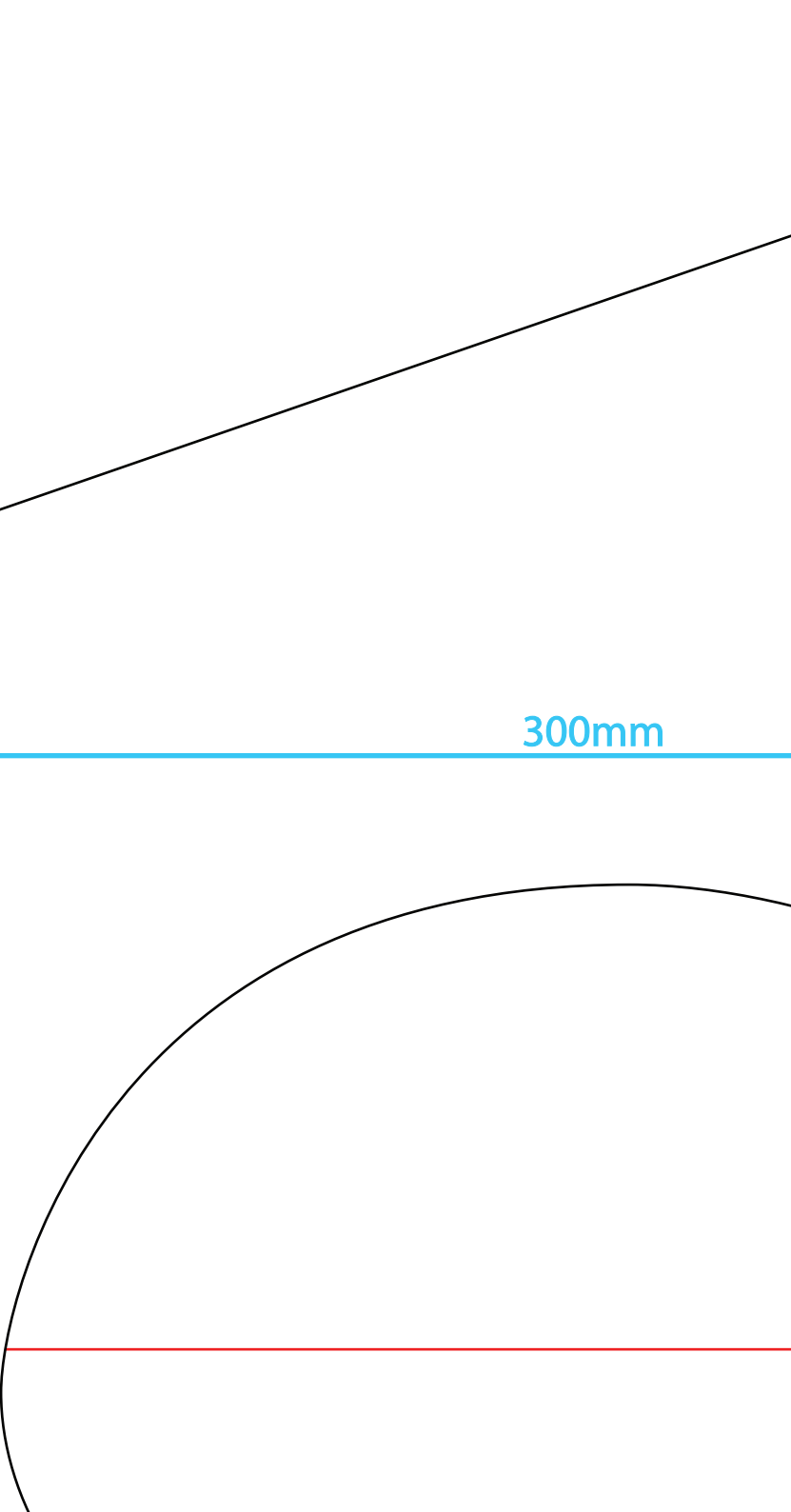
These pieces get glued together, and then gets glued here to the bottom of the box, to attach to the wing/airfoil.





Outside

Outside

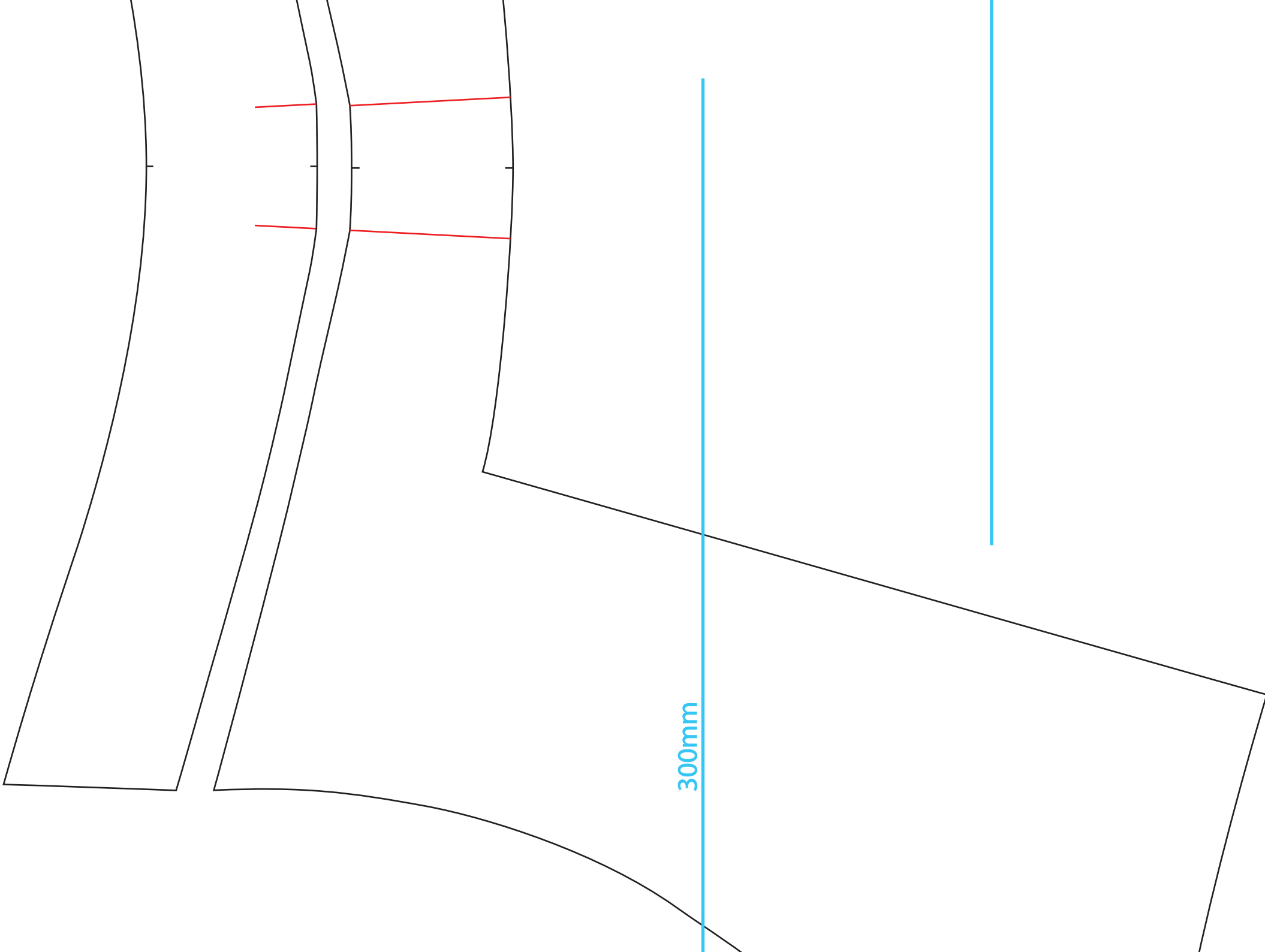


300mm

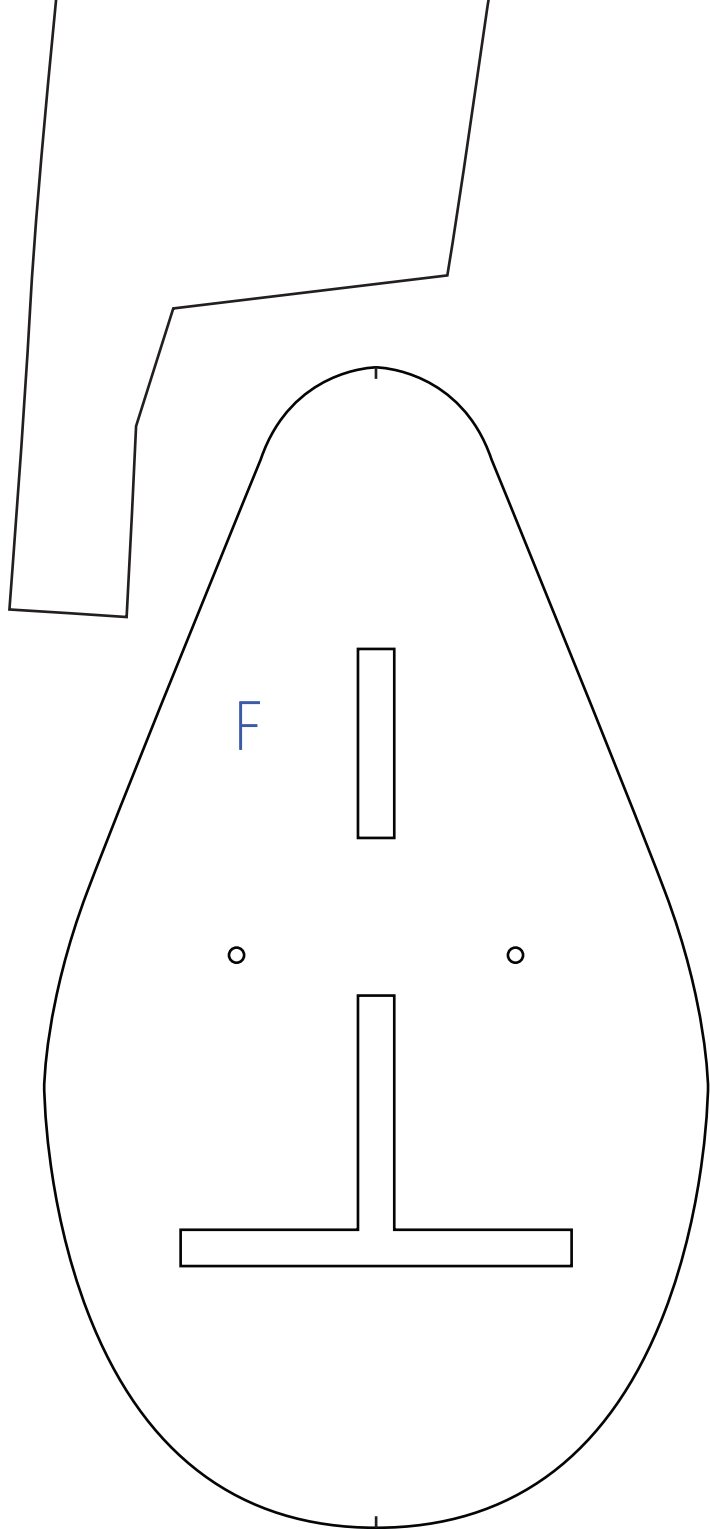
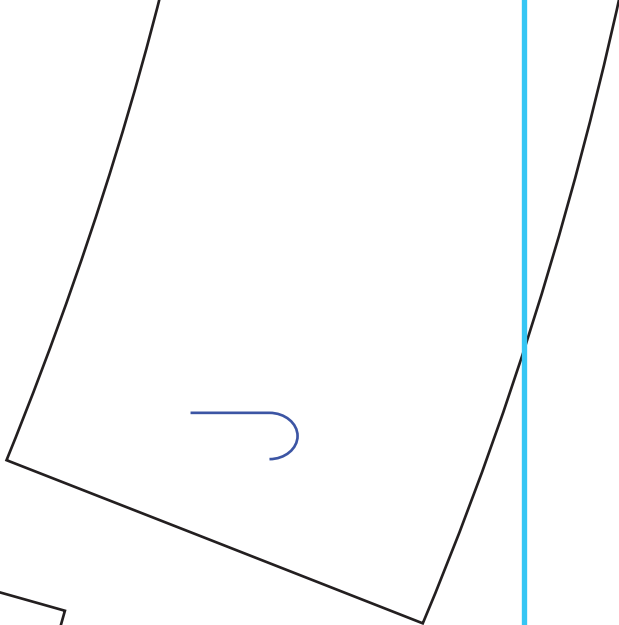
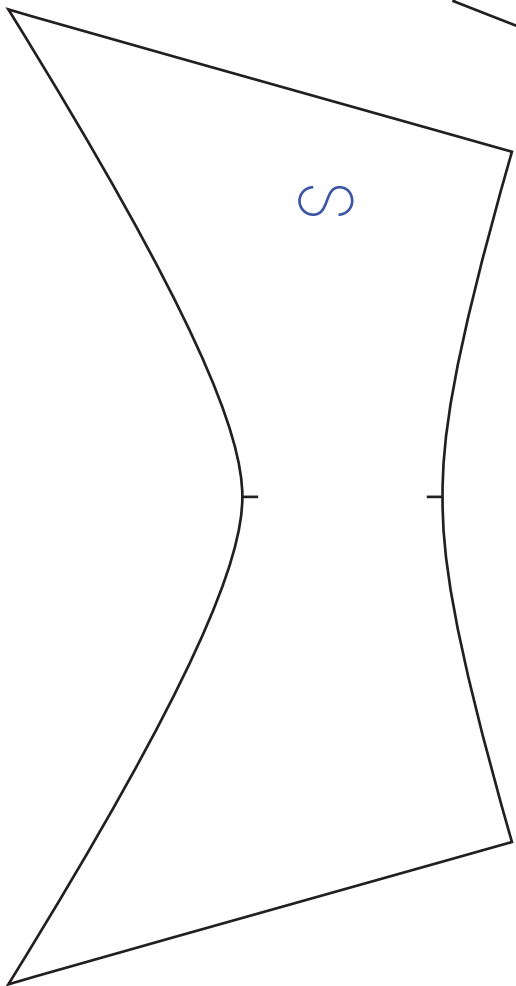
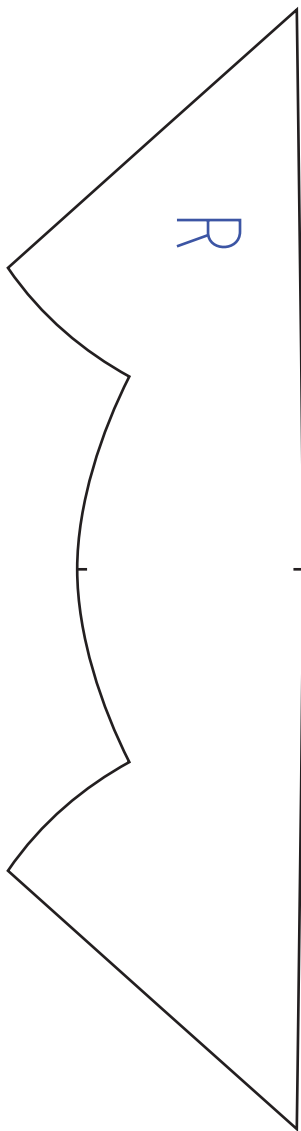
300mm

m

Copyright ©2021 13thSquadron. All Rights Reserved.
Commercial use of our plans are prohibited.



300mm



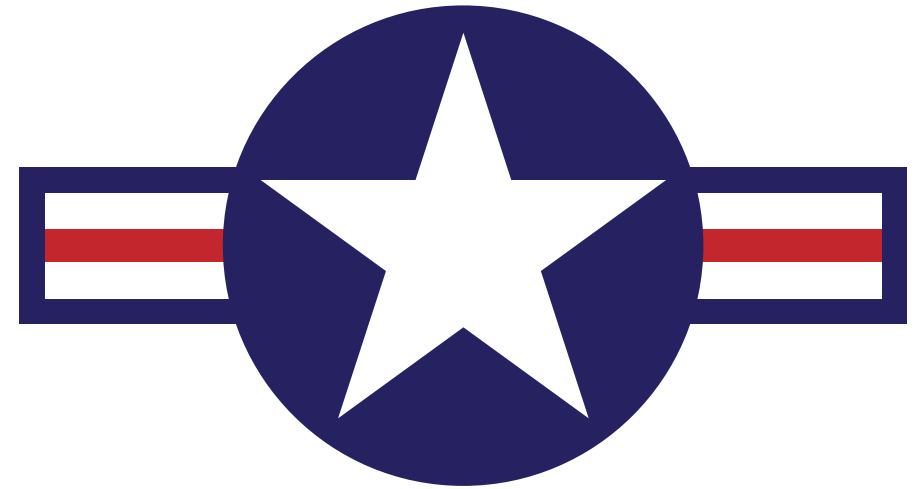


1/8 or 3/32" Wooden Spar

300mm

Lettering and Insignias you can use to put on your plane.

USAF



ARMY

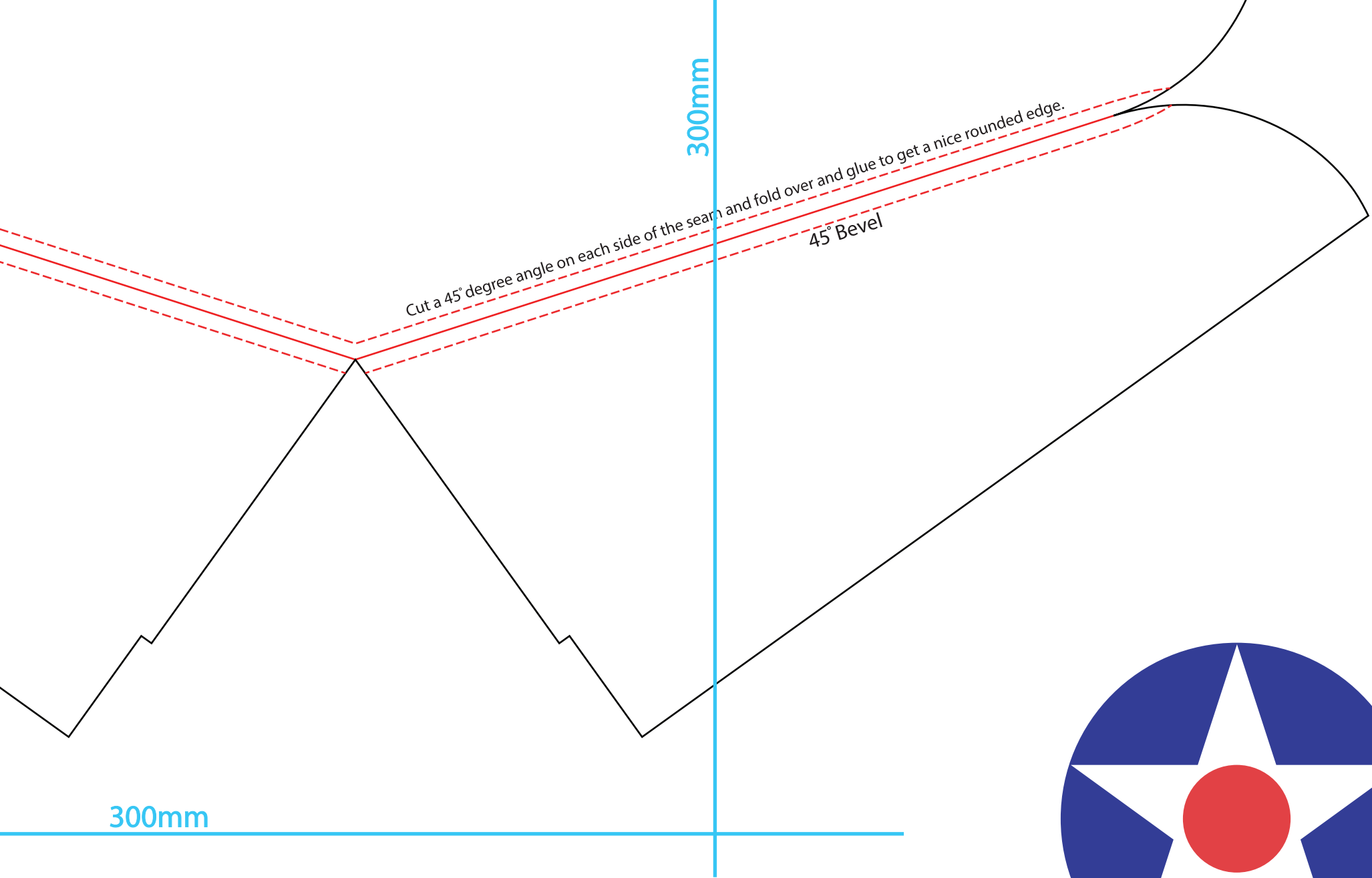
JN

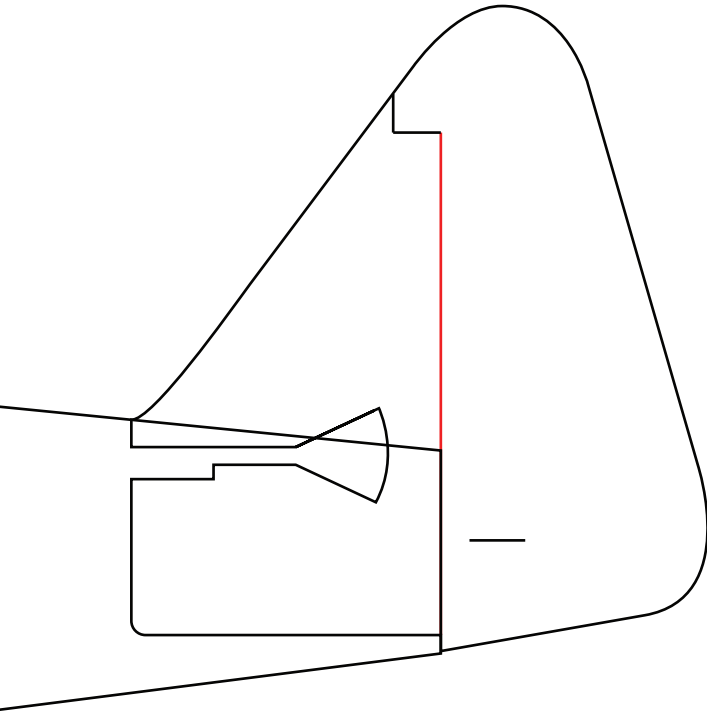
13

0123456789

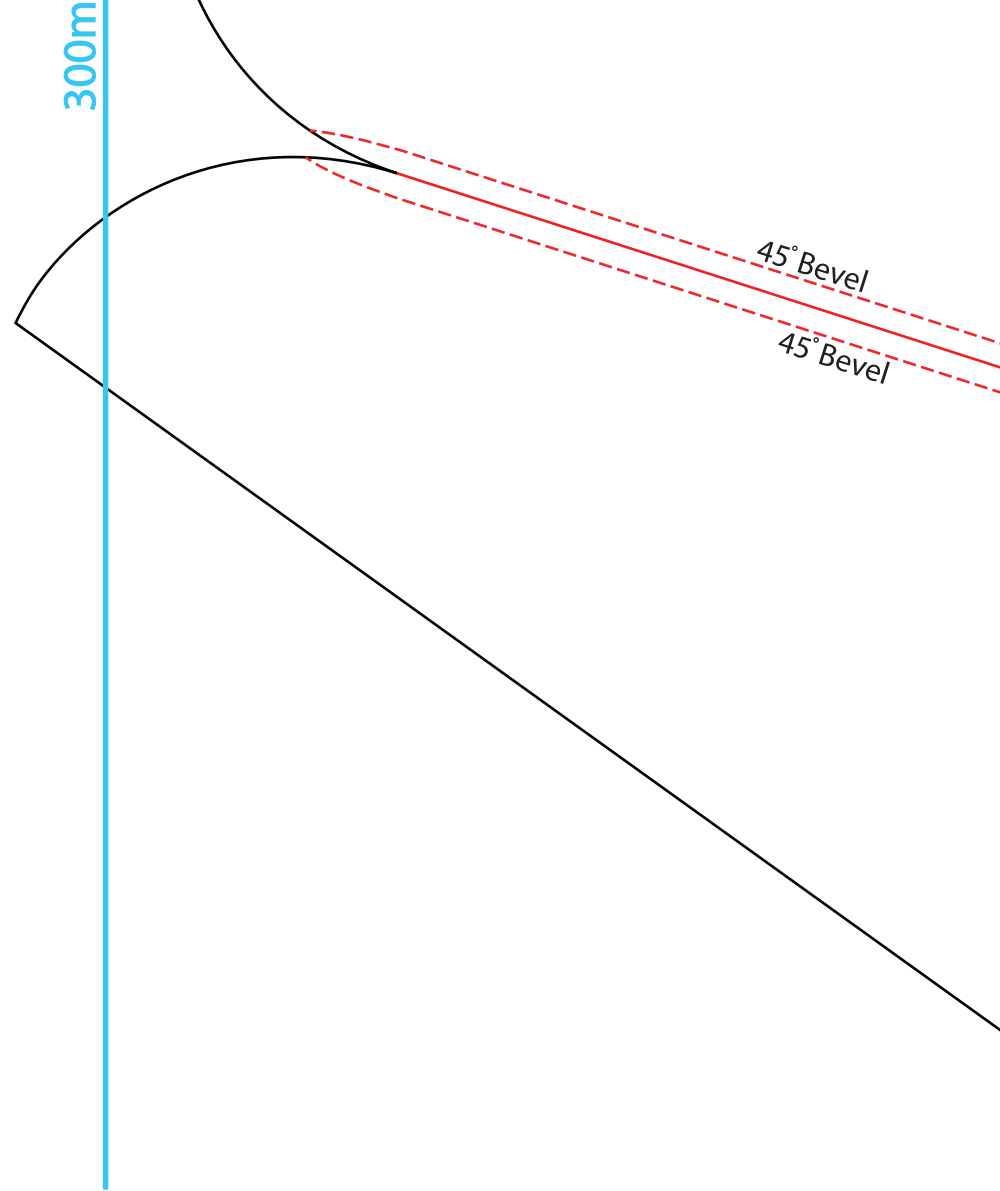
ABCDEFGHIJKLMN O P Q R

STUVWXYZ 1234567890





300mm

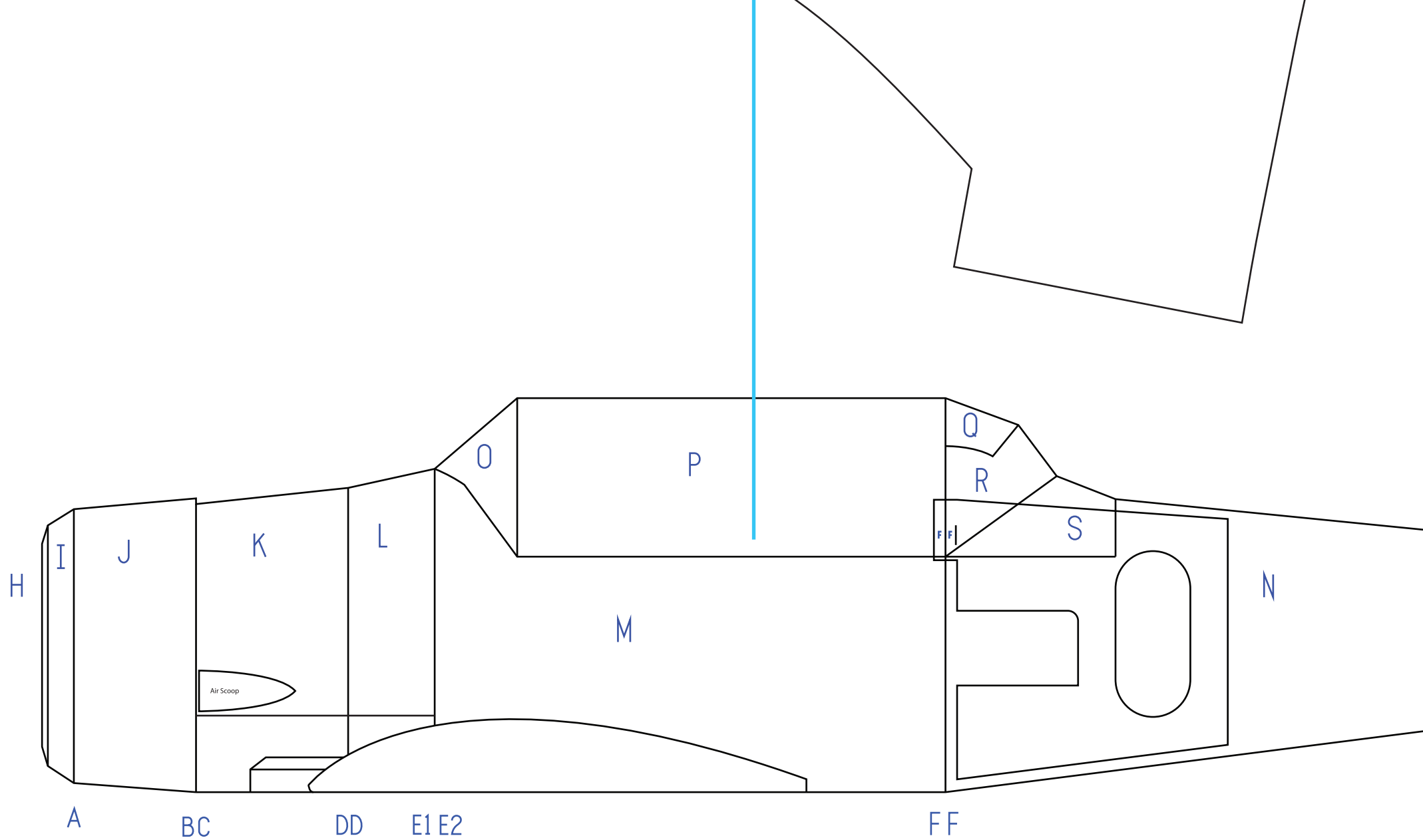


300m

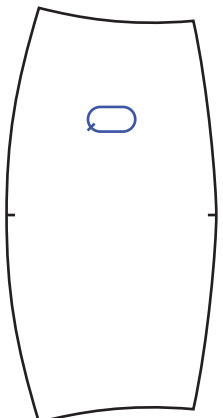
45° Bevel

45° Bevel

300mm



Copyright ©2021 13thSquadron. All Rights Reserved.
Commercial use of our plans are prohibited.

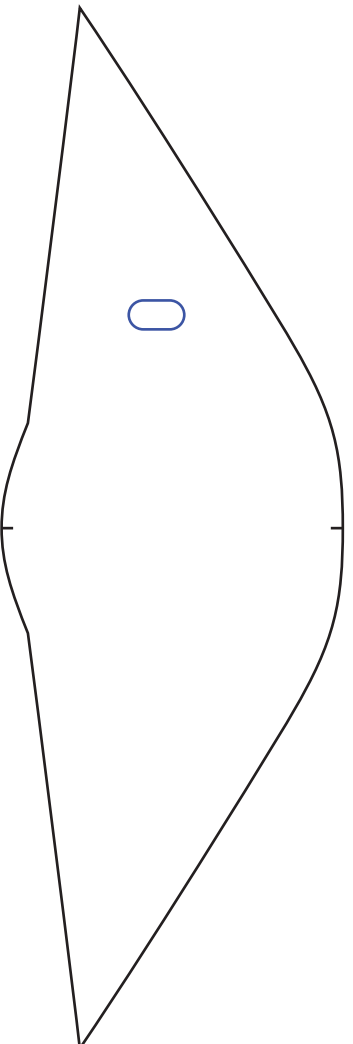


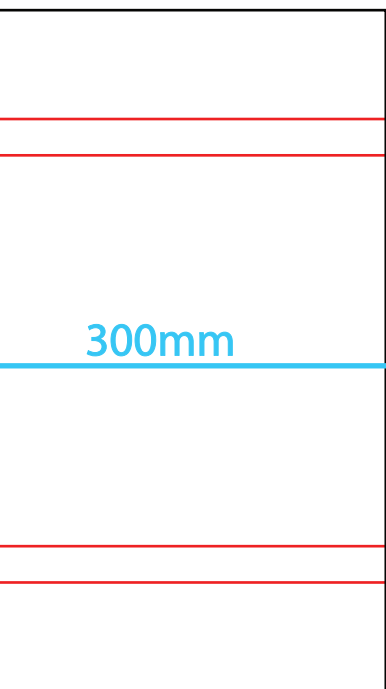
T

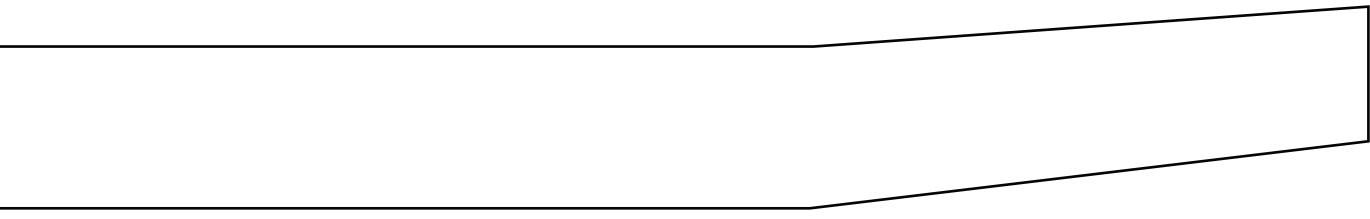
CANOPY
PIECES

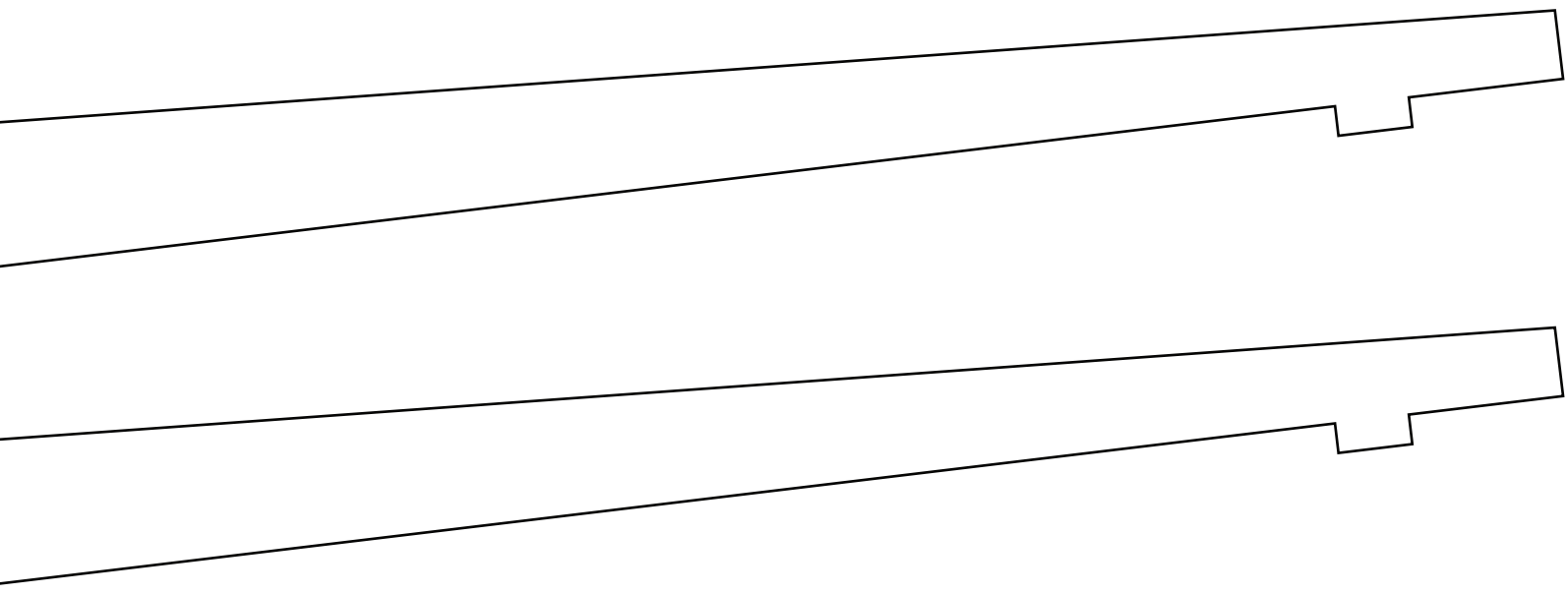
P

G









300mm

