

LEAVE THE PAPER ON THE ALLERON.

Vertical Stab piece  
slides in here.

Elevator and Rudder servo's go here  
on each side for tail surface control.

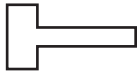
Wingtip String Guide



Tabbed Spar goes in front



Cut a 45° Degree Bevel between the top wing and the lower wing before glueing.



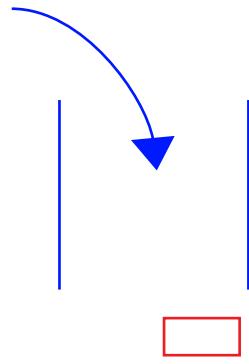
Peel off the paper here.



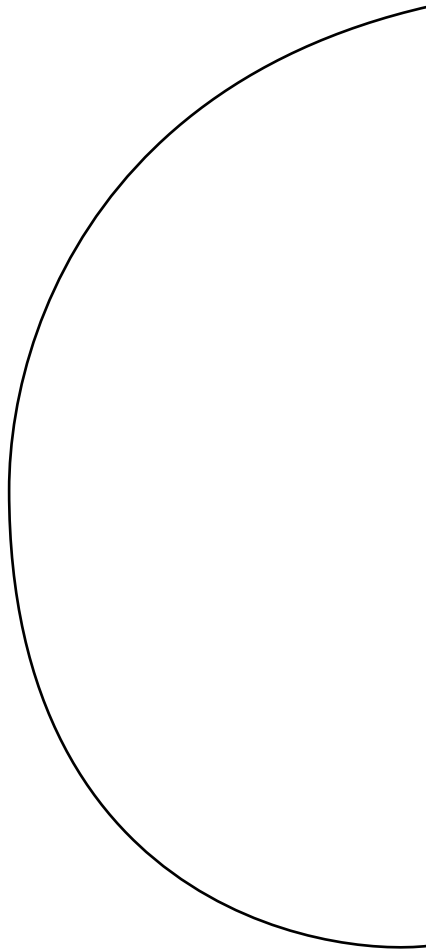
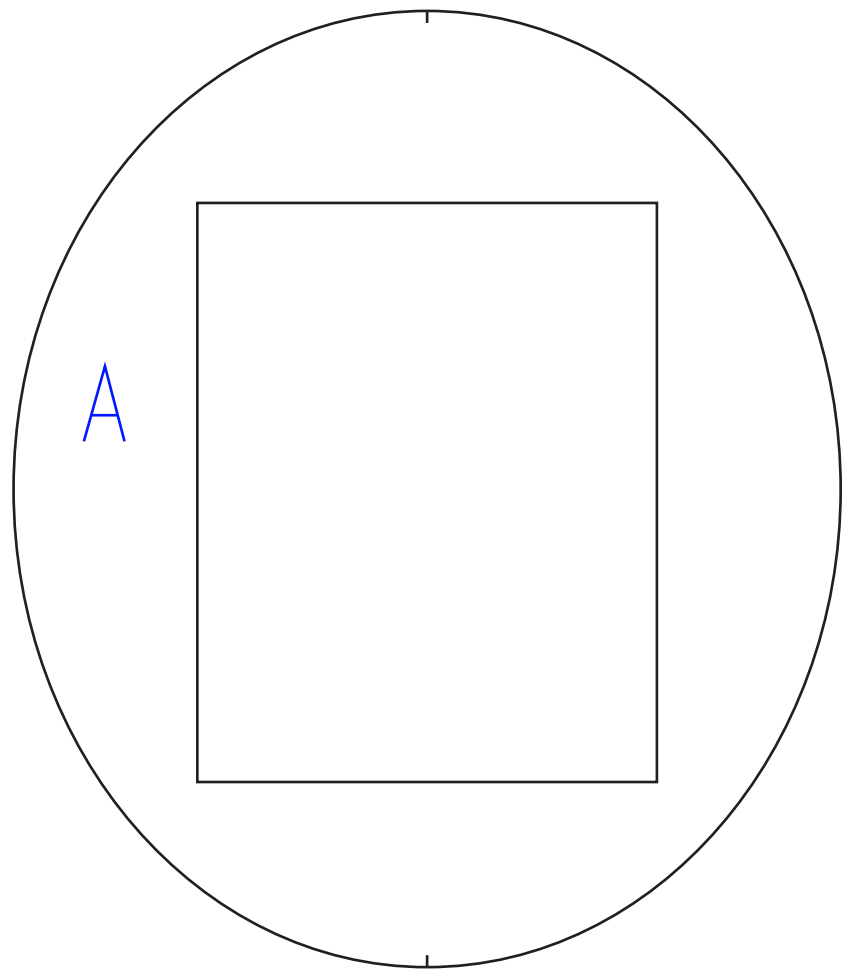
30"



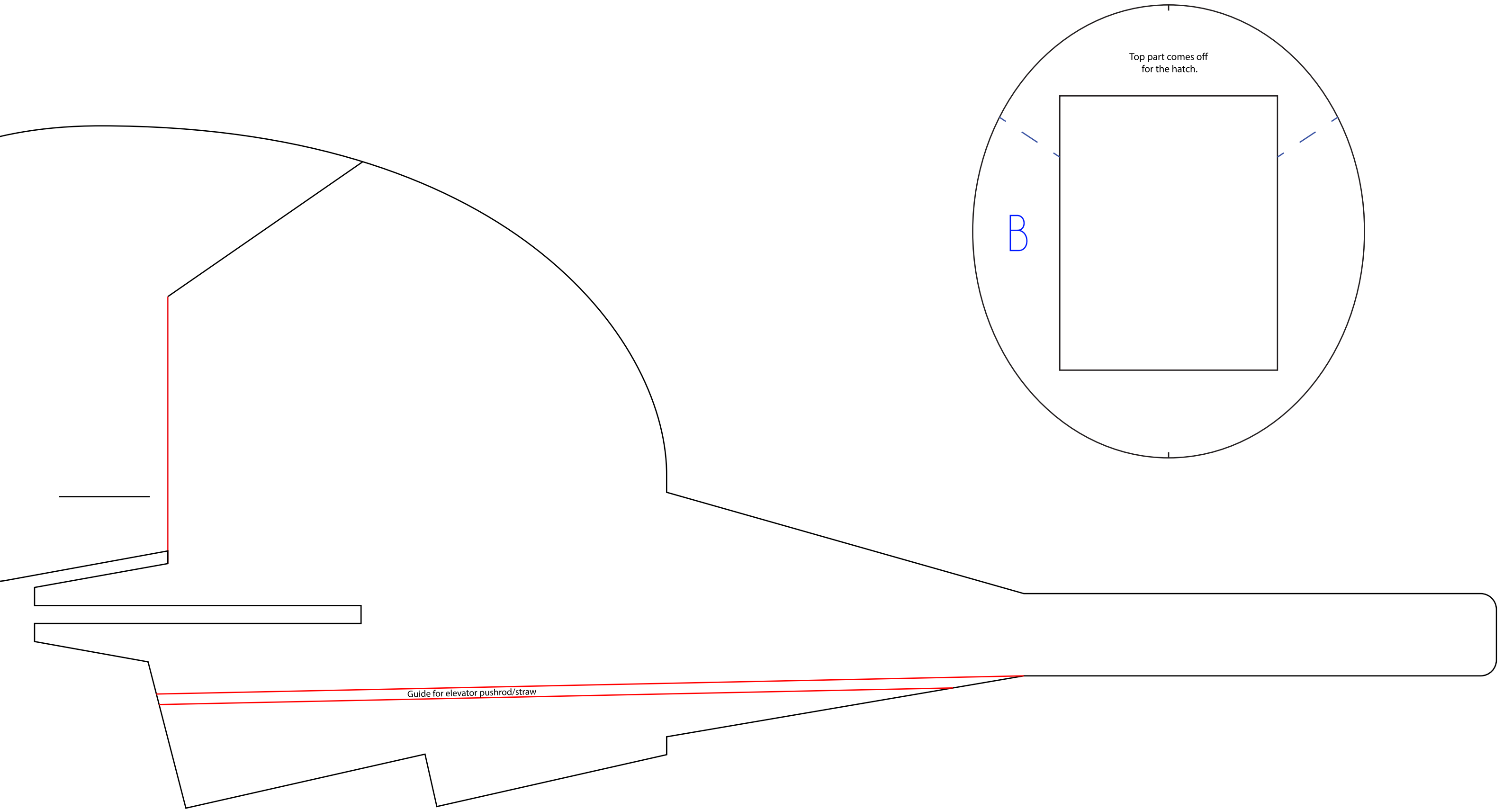
Space for "Bottom Center Wing Flyby Wire Mount"  
It will vary depending on much you bevel the leading edge. It corresponds with the on the top side of the wing.

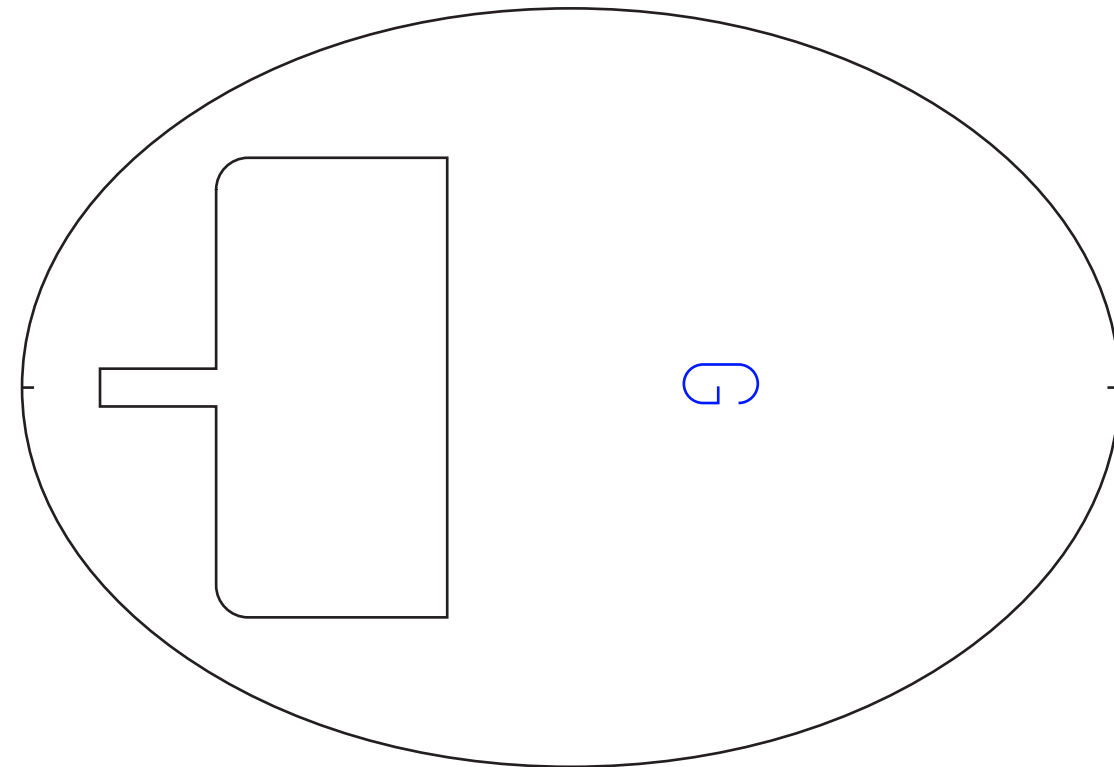
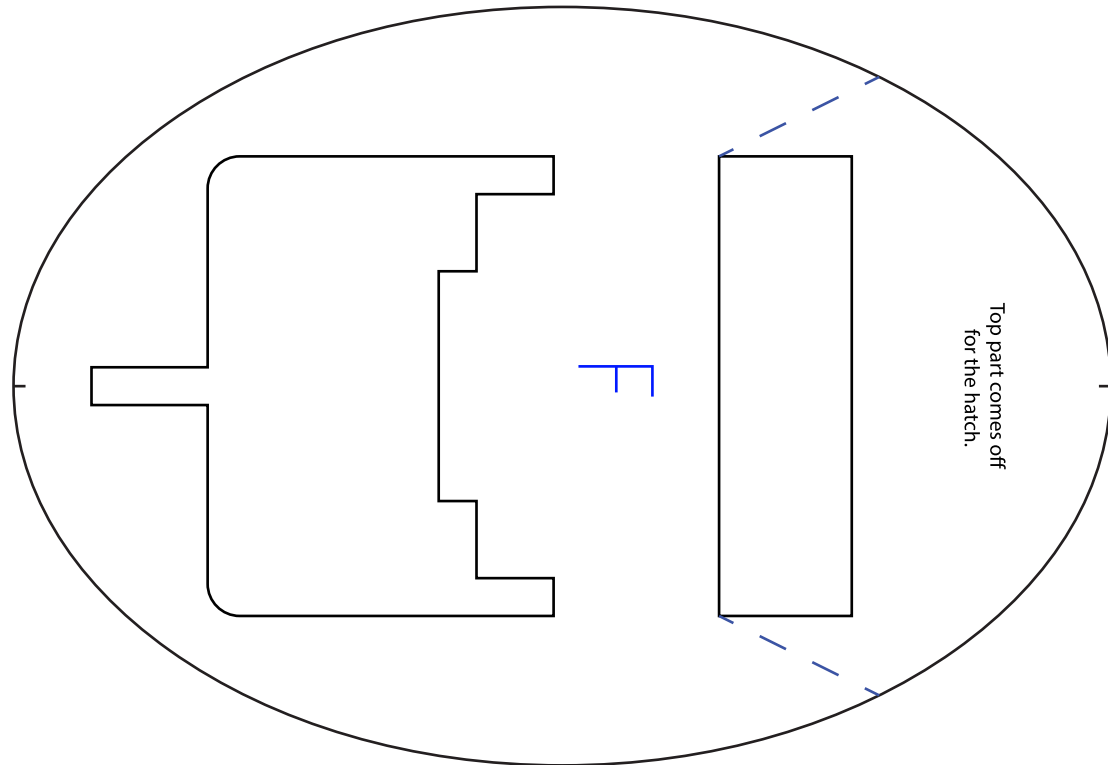
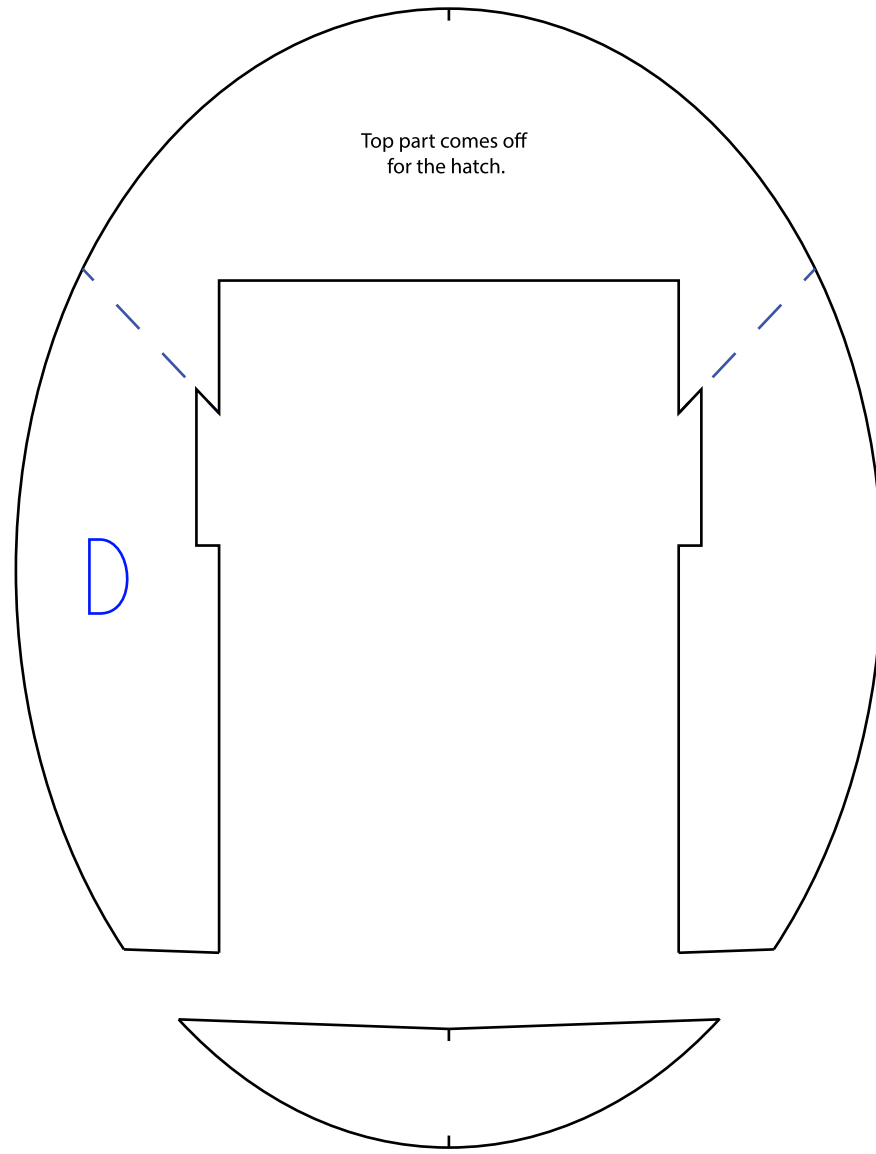
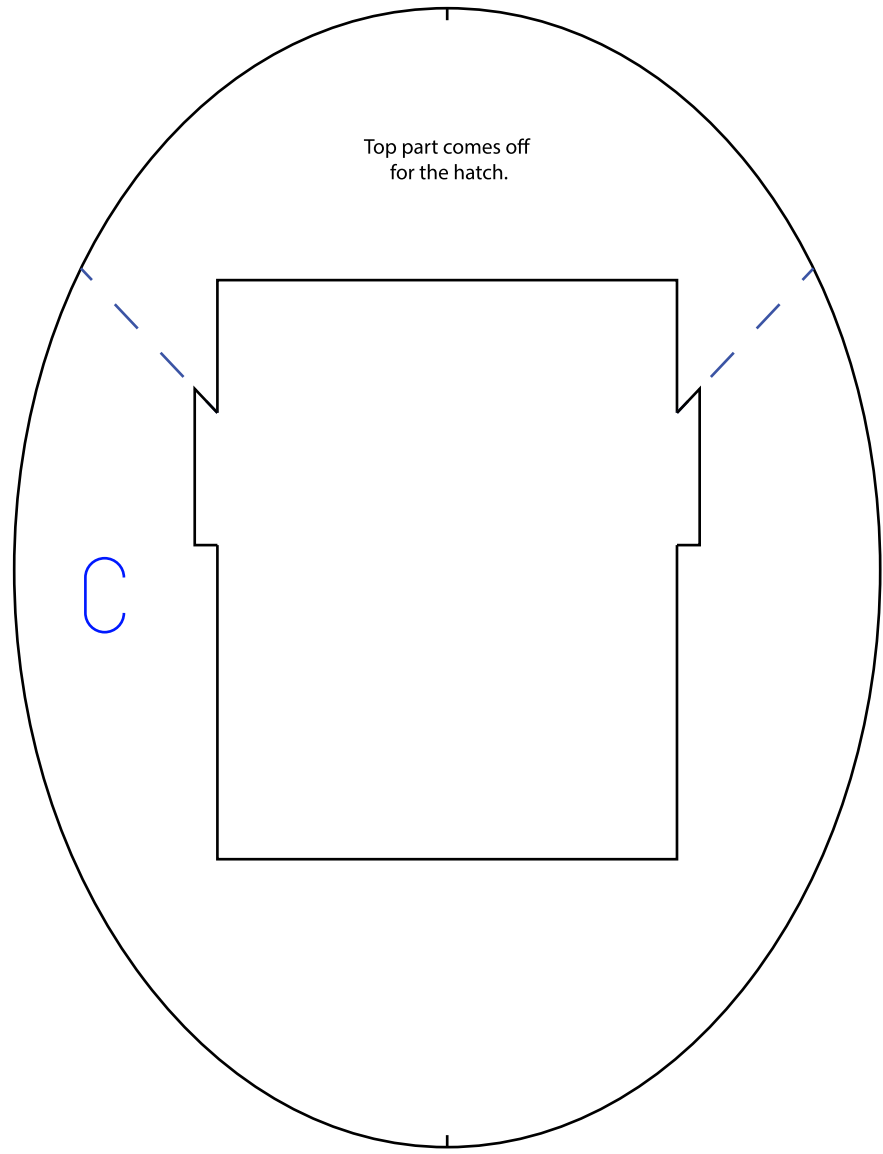


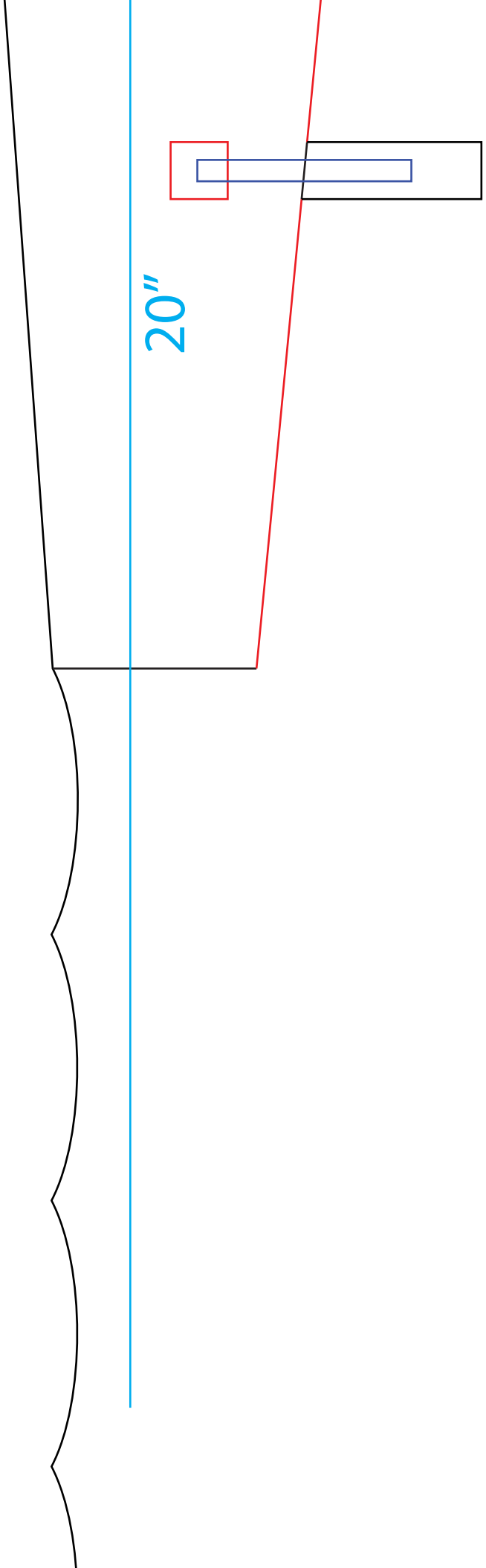
Center String Guide



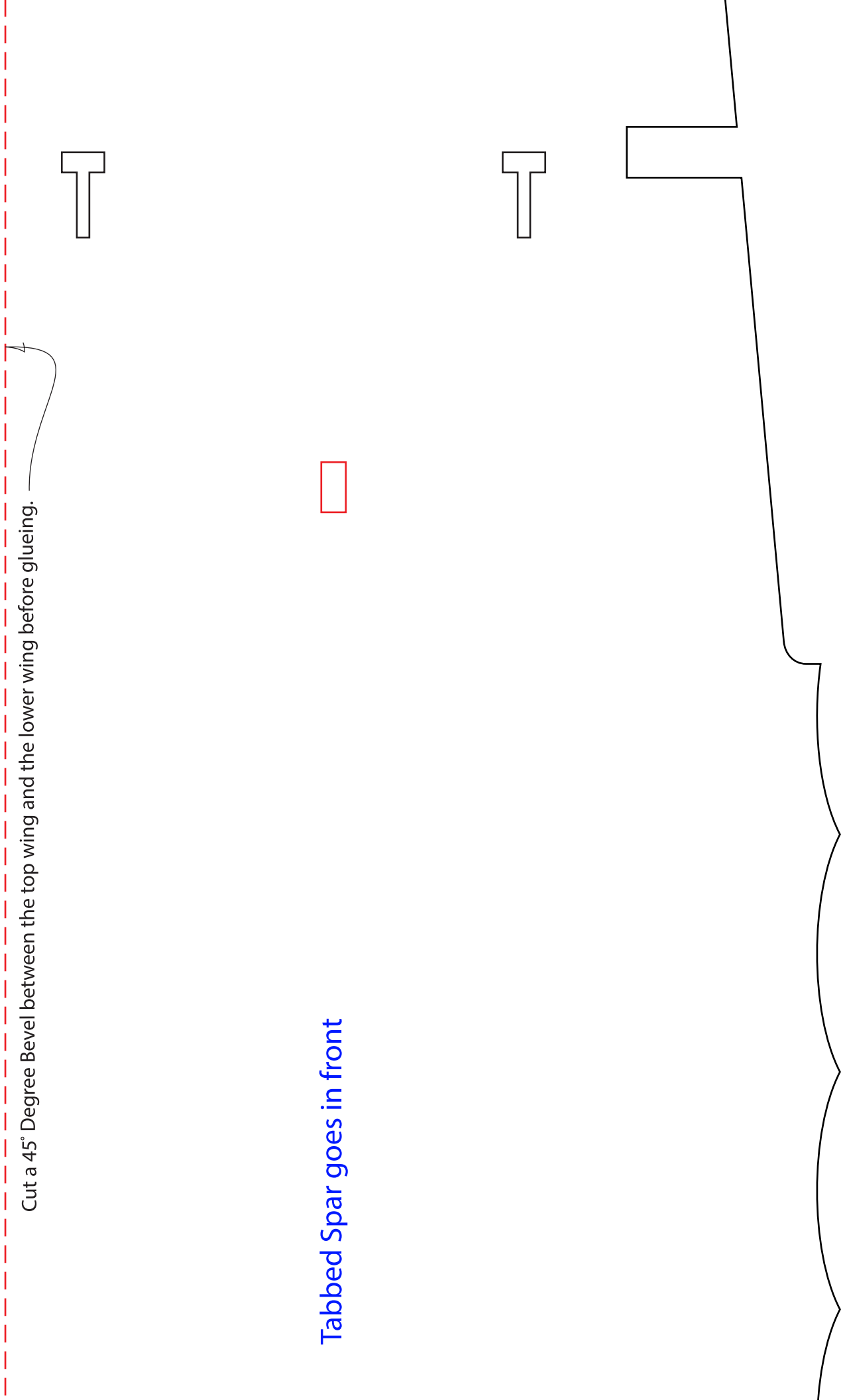
20"



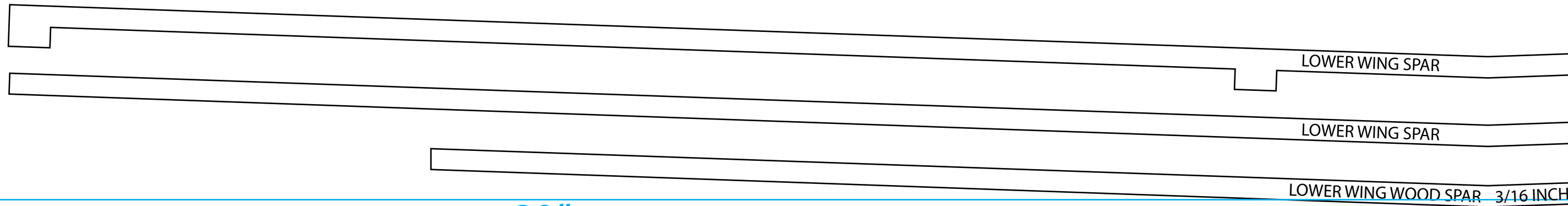




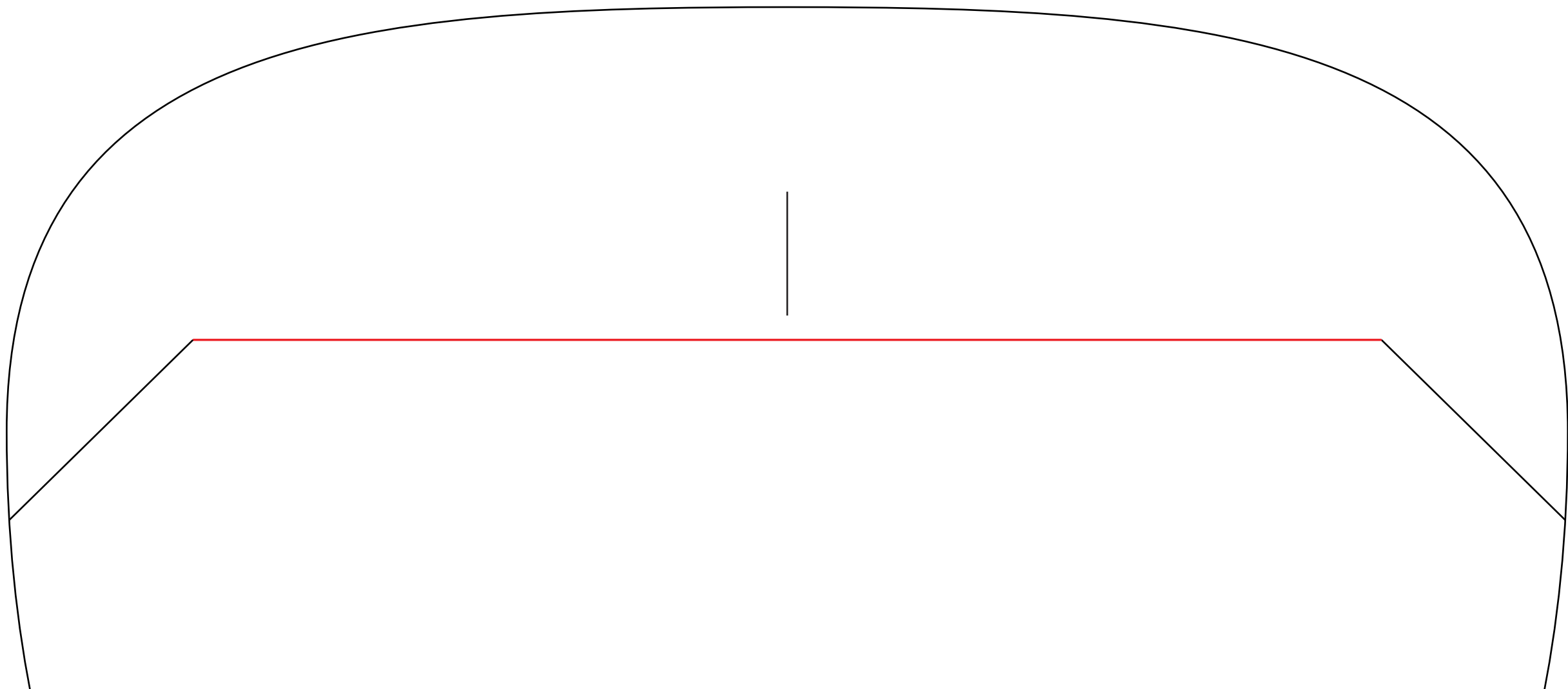
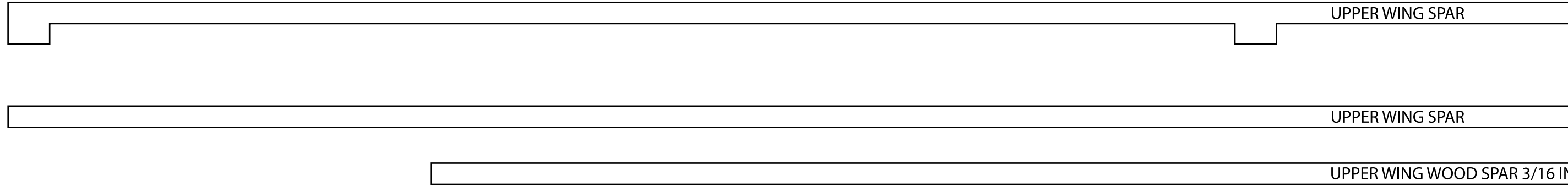
Peel off the paper here.

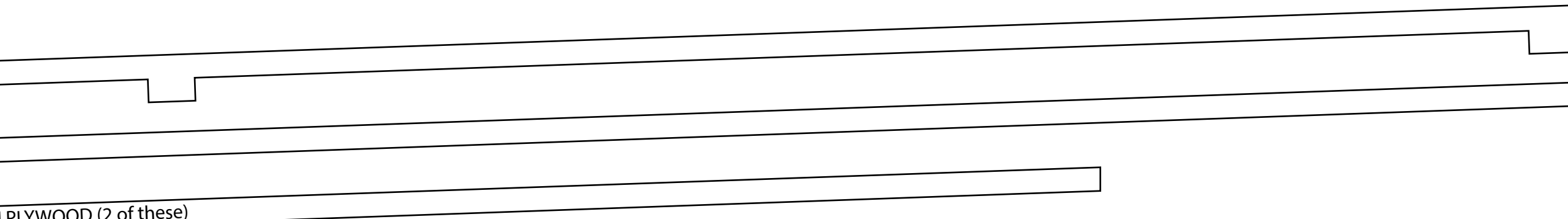


Tabbed Spar goes in front



30"

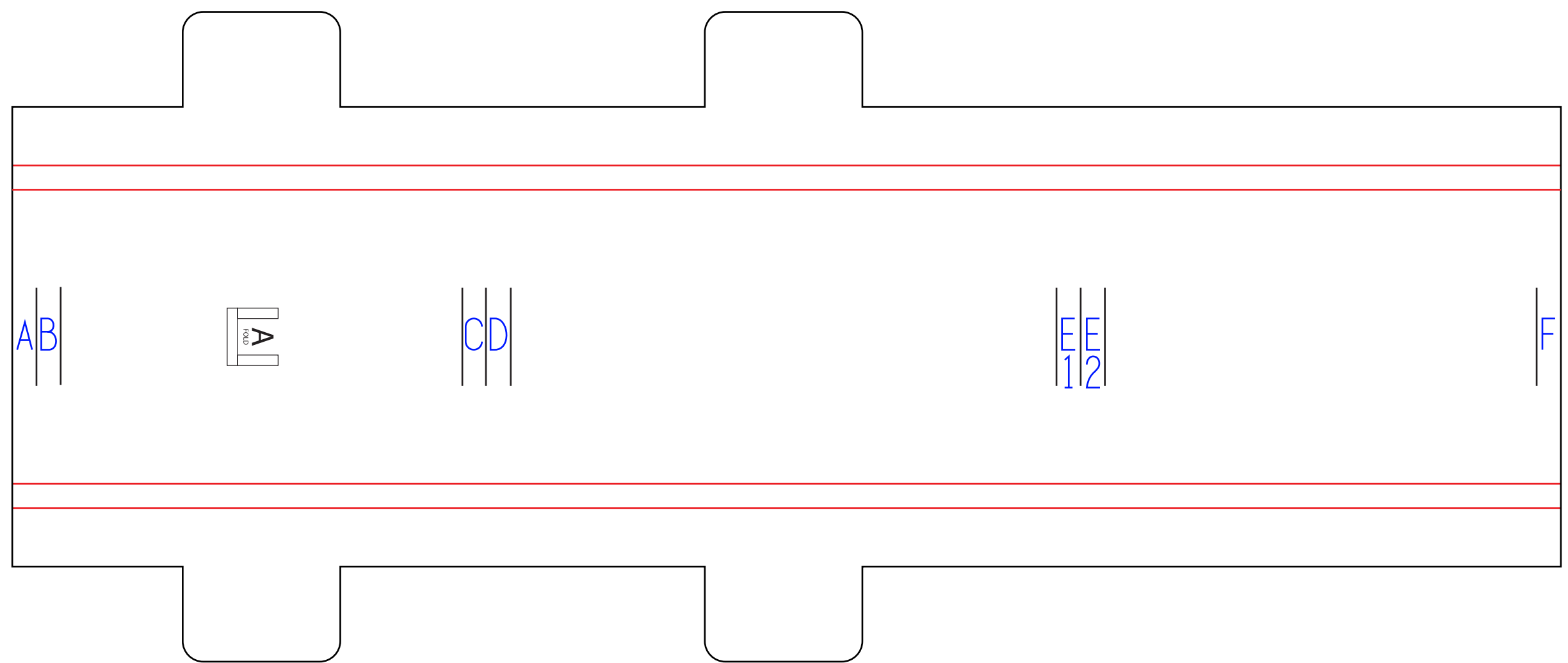
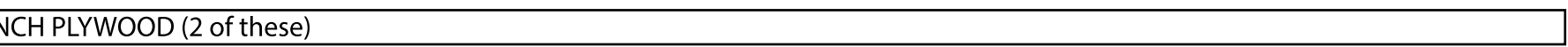




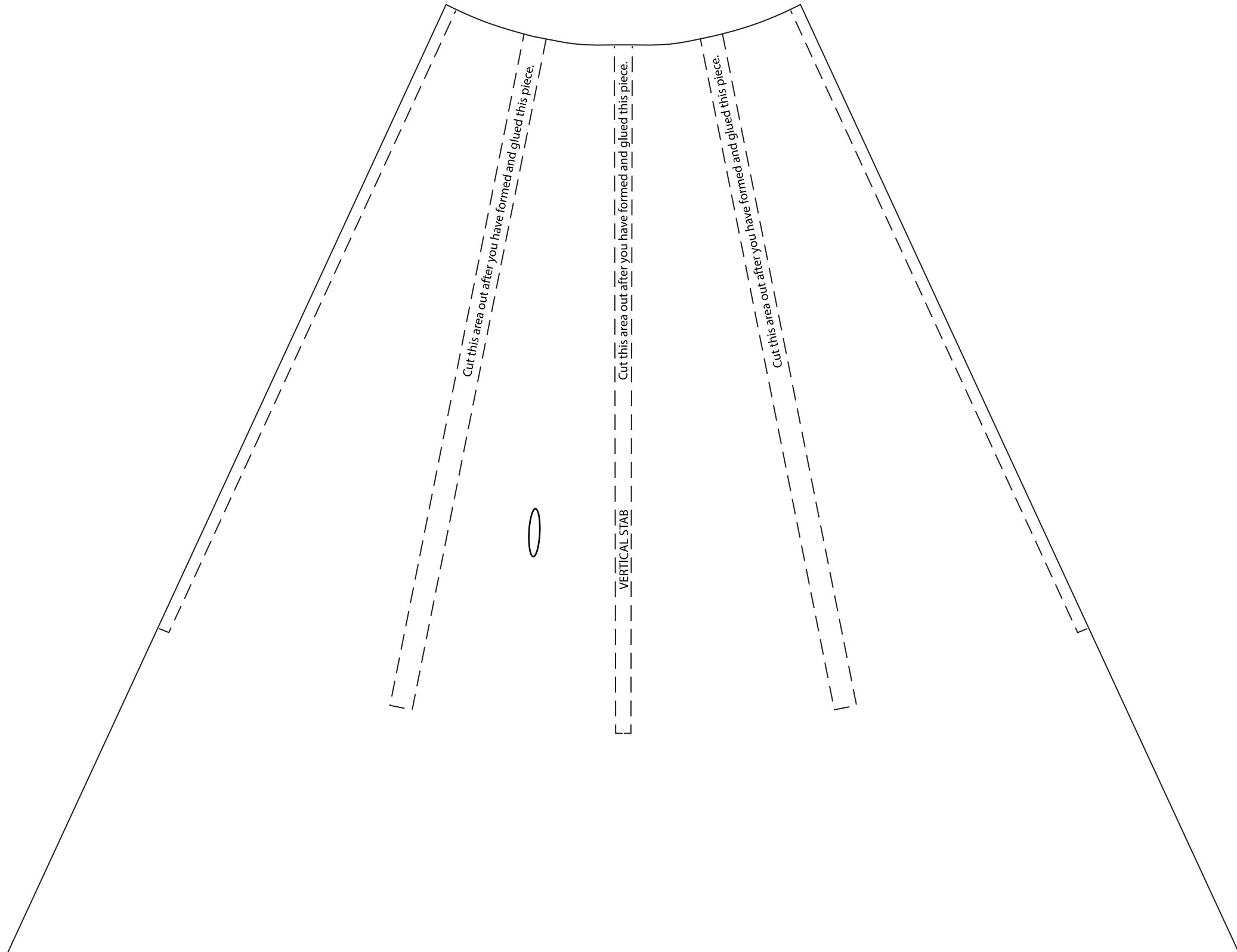
PLYWOOD (2 of these)



THIN PLYWOOD (2 of these)



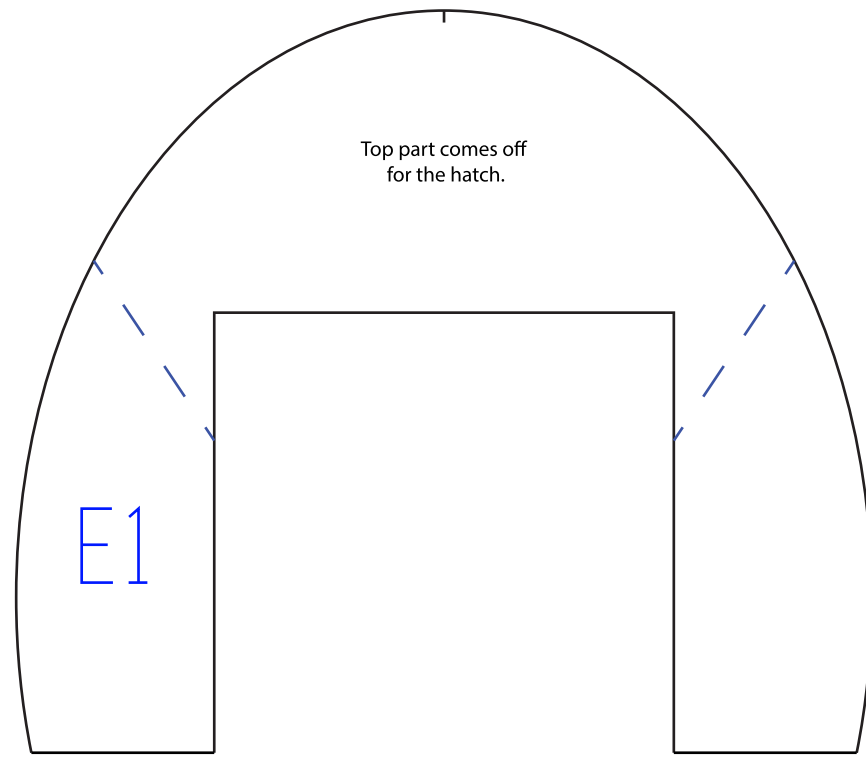
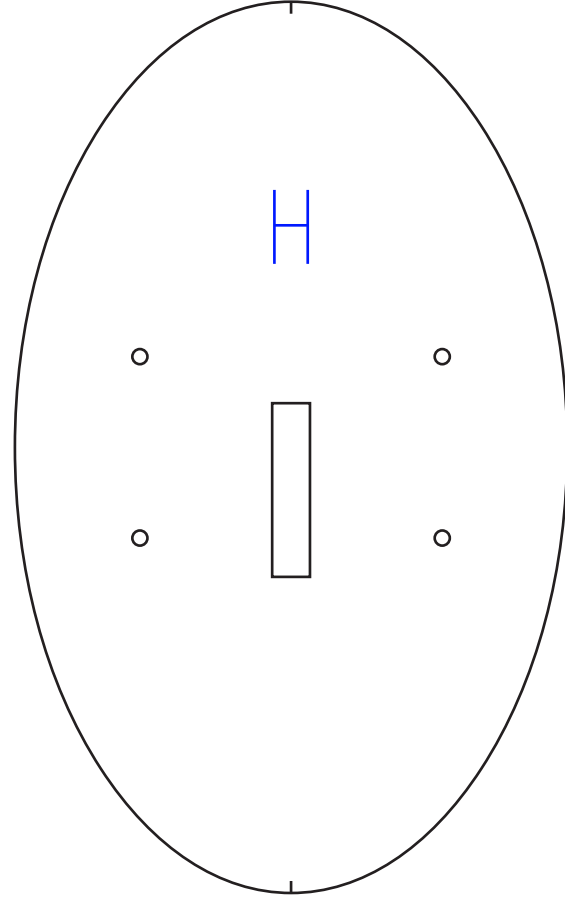
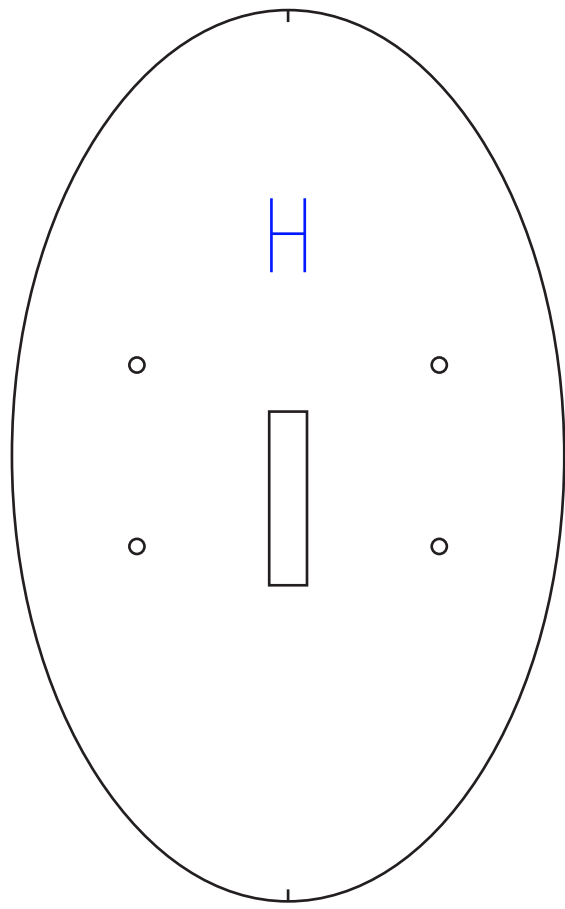




Cut this area out after you have formed and glued this piece.

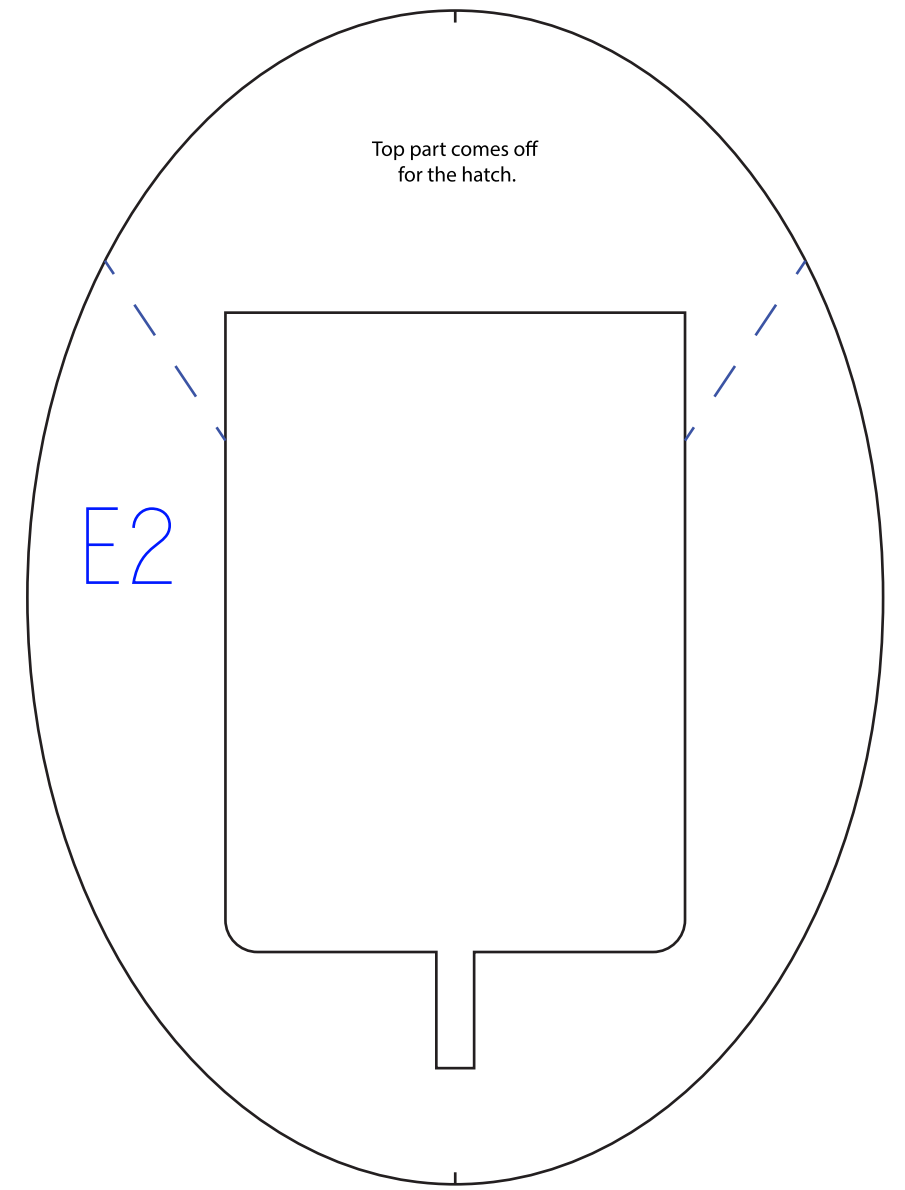
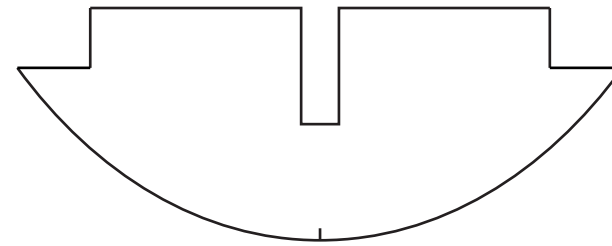
VERTICAL STAB

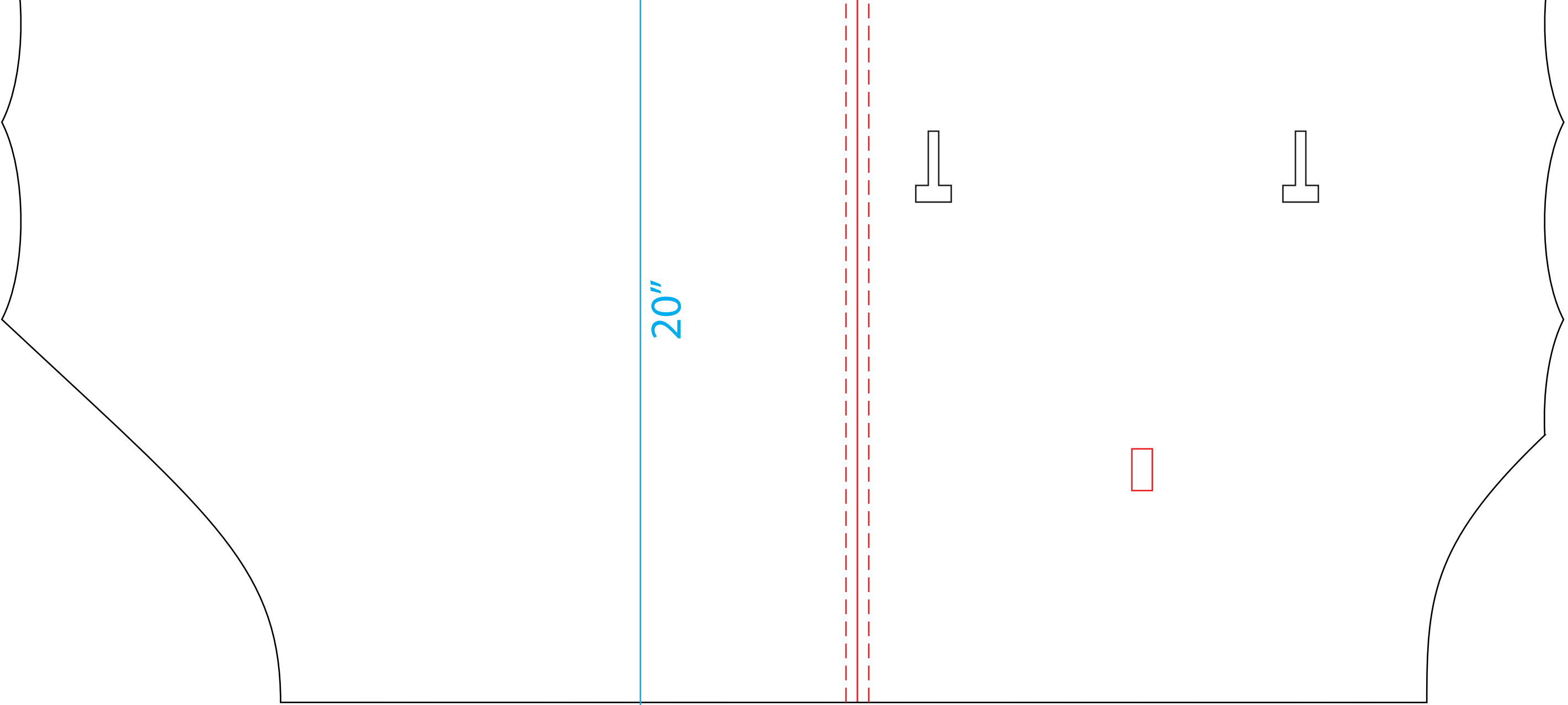
Cut this area out after you have formed and glued this piece.



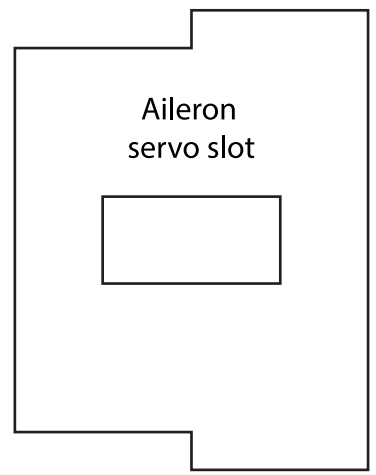
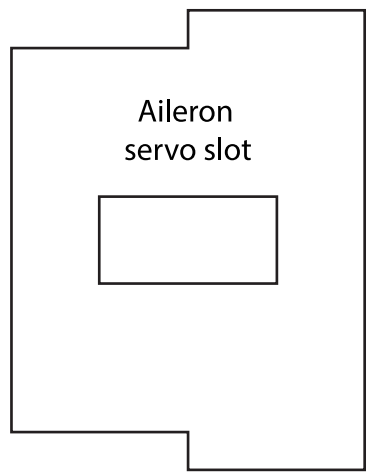
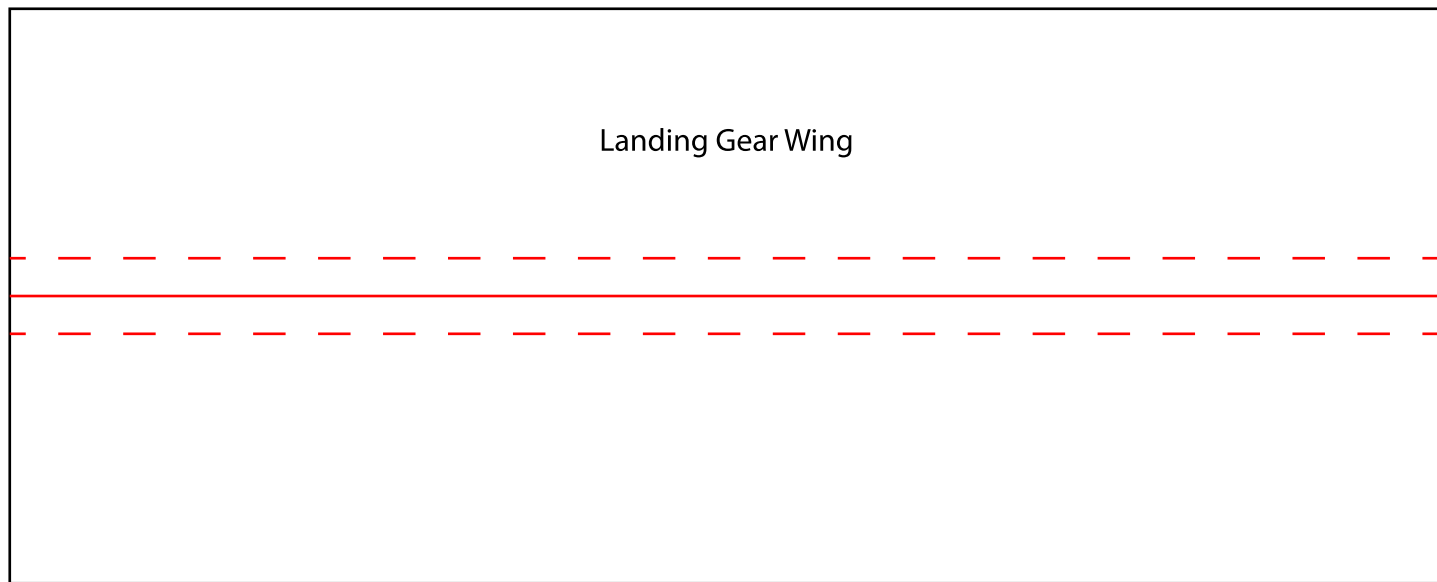
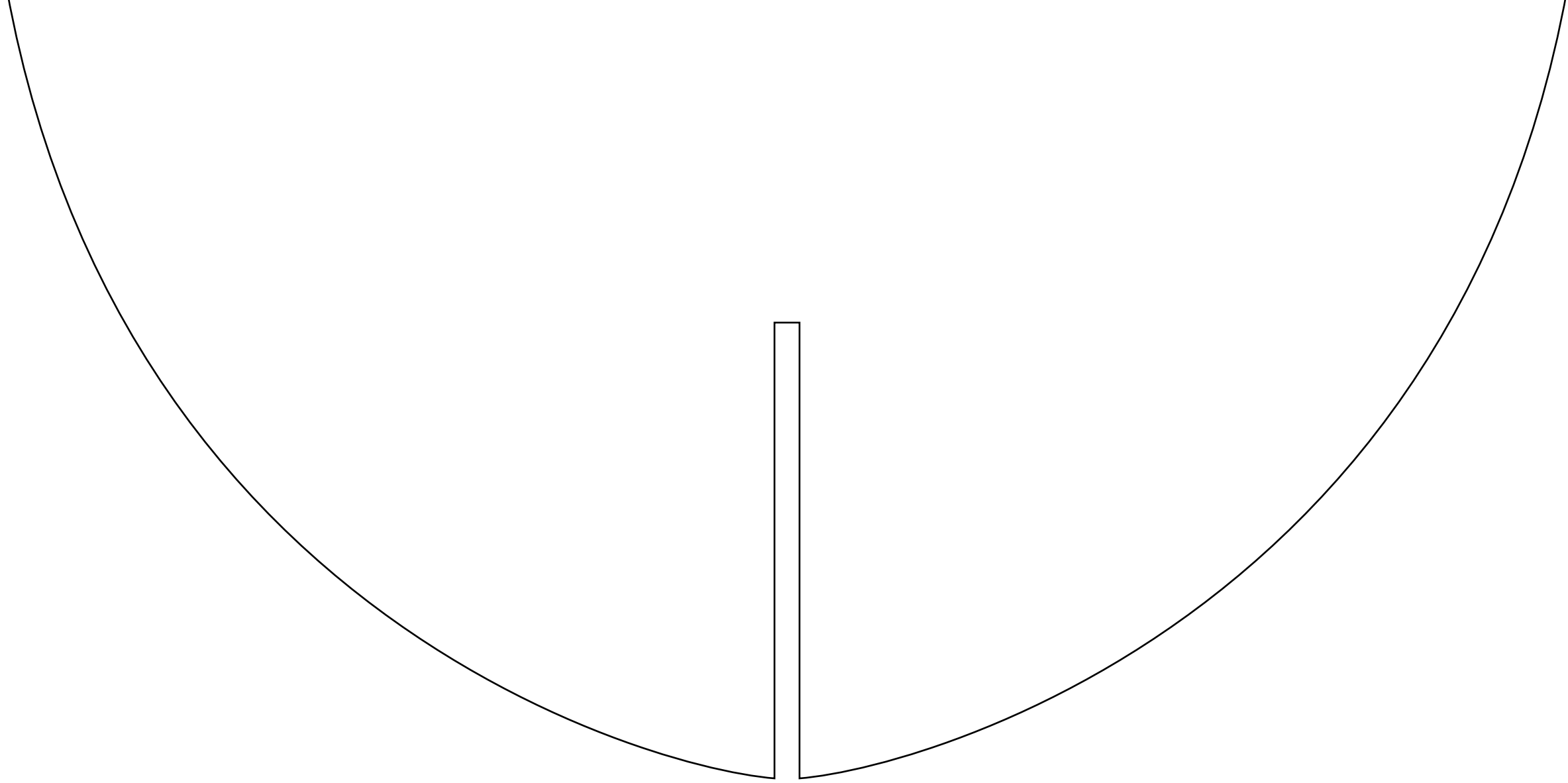
Space for  
Rear Landing  
Gear Mount

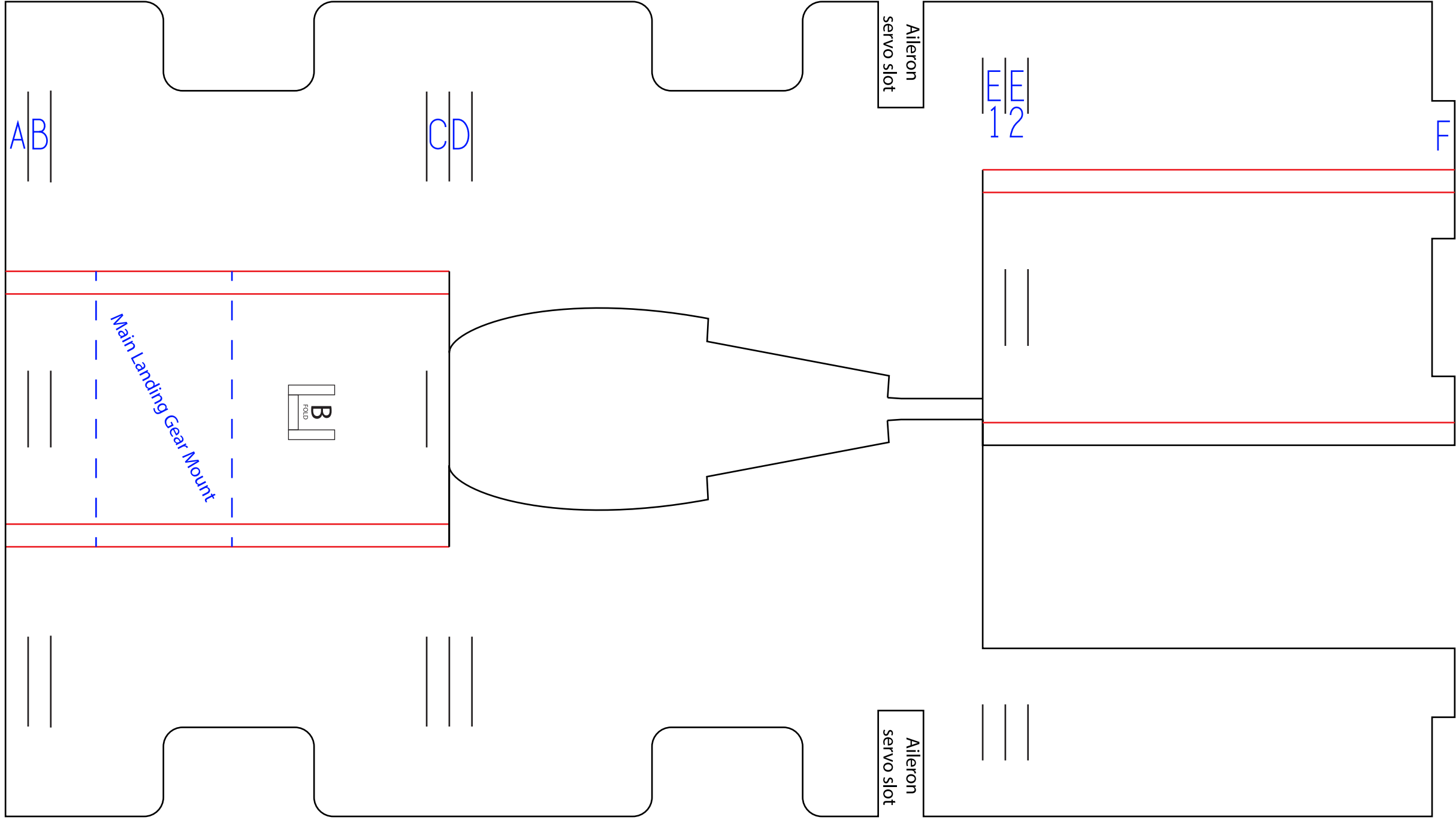
Space for  
Rear Landing  
Gear Mount





20"



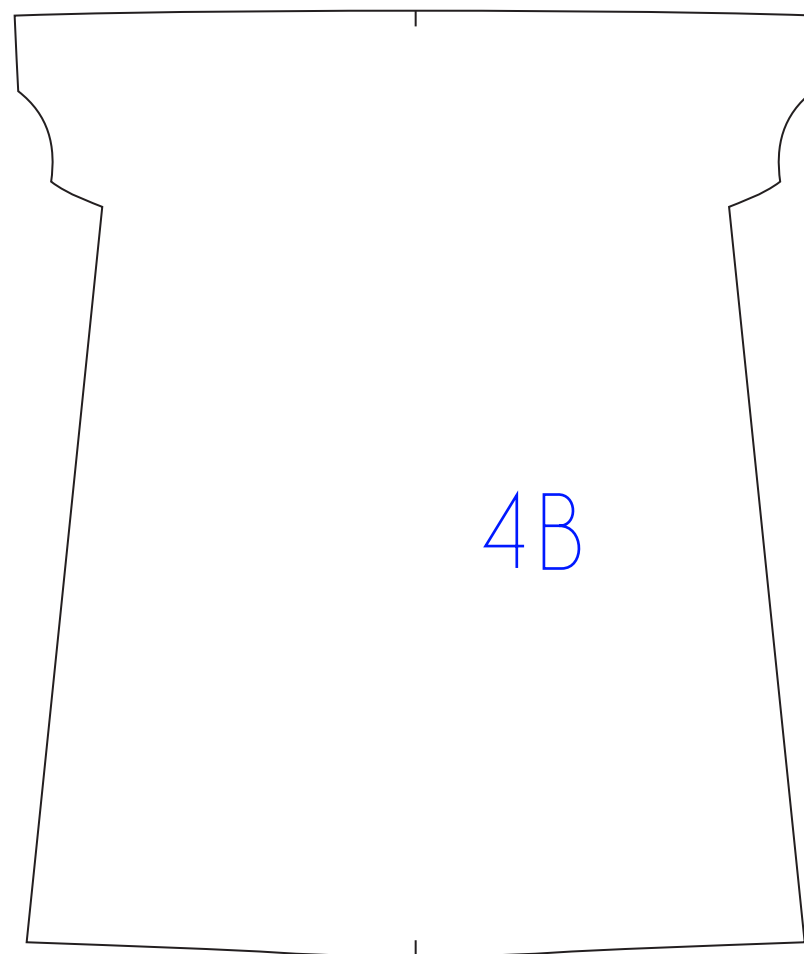
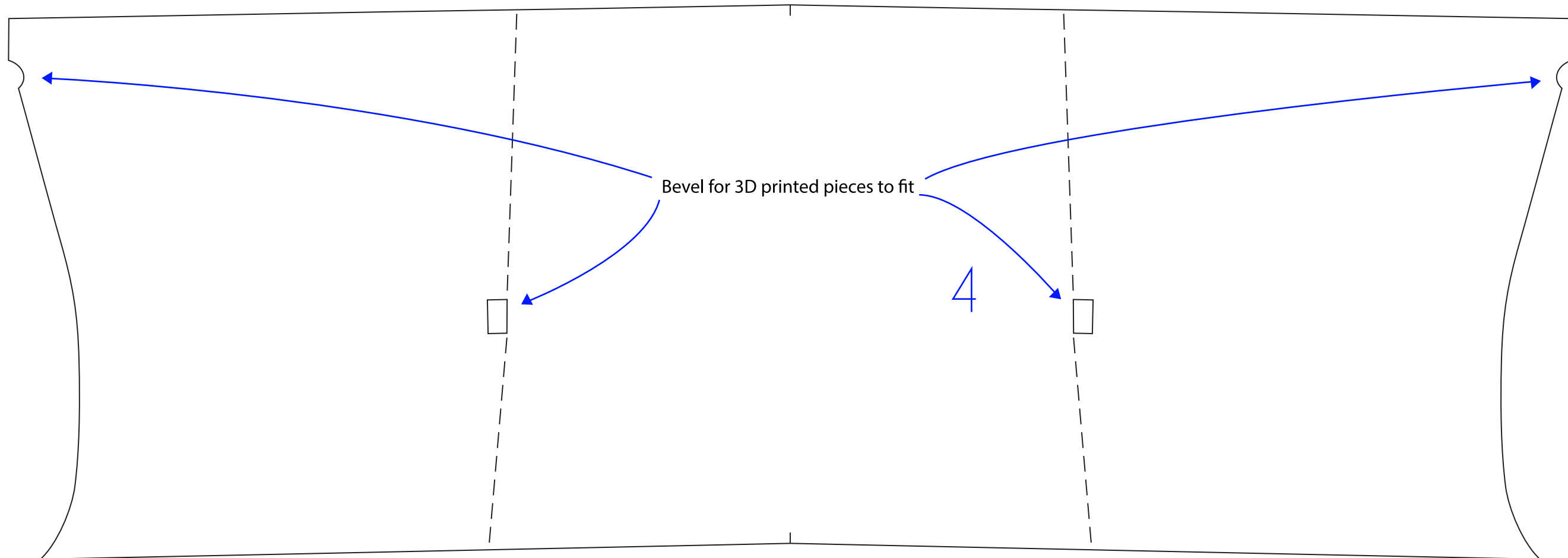




7



6



Holes on Molded Piece two are for  
Engine Cowling Flyby Wire Mount

