

LOWER WING SPAR

LOWER WING SPAR

LOWER WING WOOD SPAR 3/16 INCH PLYWOOD (2 of these)

UPPER WING SPAR

UPPER WING SPAR

UPPER WING WOOD SPAR 3/16 INCH PLYWOOD (2 of these)

Aileron servo slot

Aileron servo slot

Landing Gear Wing

Tabbed Spar goes in front

Cut a 45 Degree Bevel between the top wing and the lower wing before glueing.

Peel off the paper here.

Space for "Bottom Center Wing Flyby Wire Mount" It will vary depending on much you bevel the leading edge. It corresponds with the on the top side of the wing.

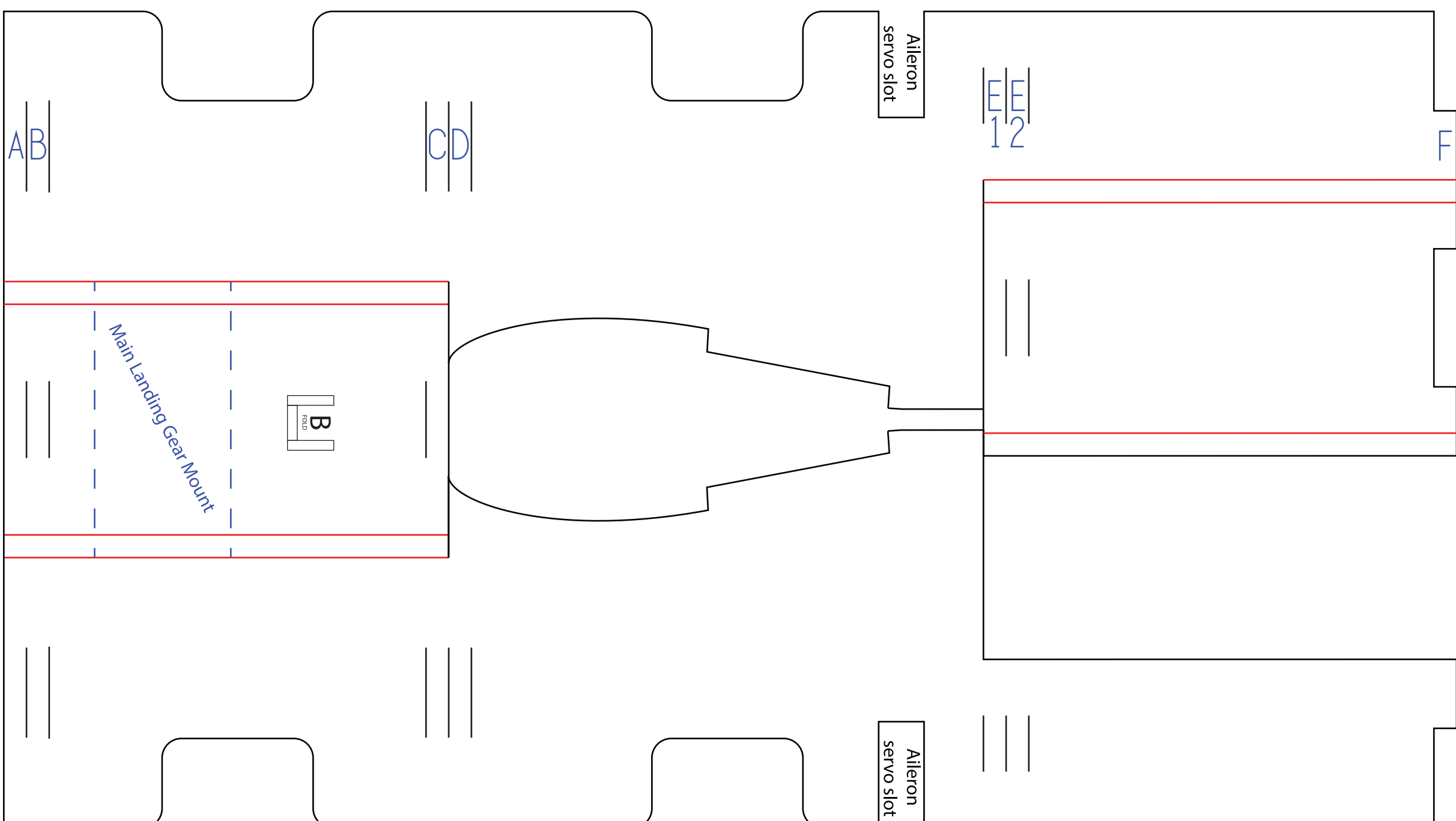
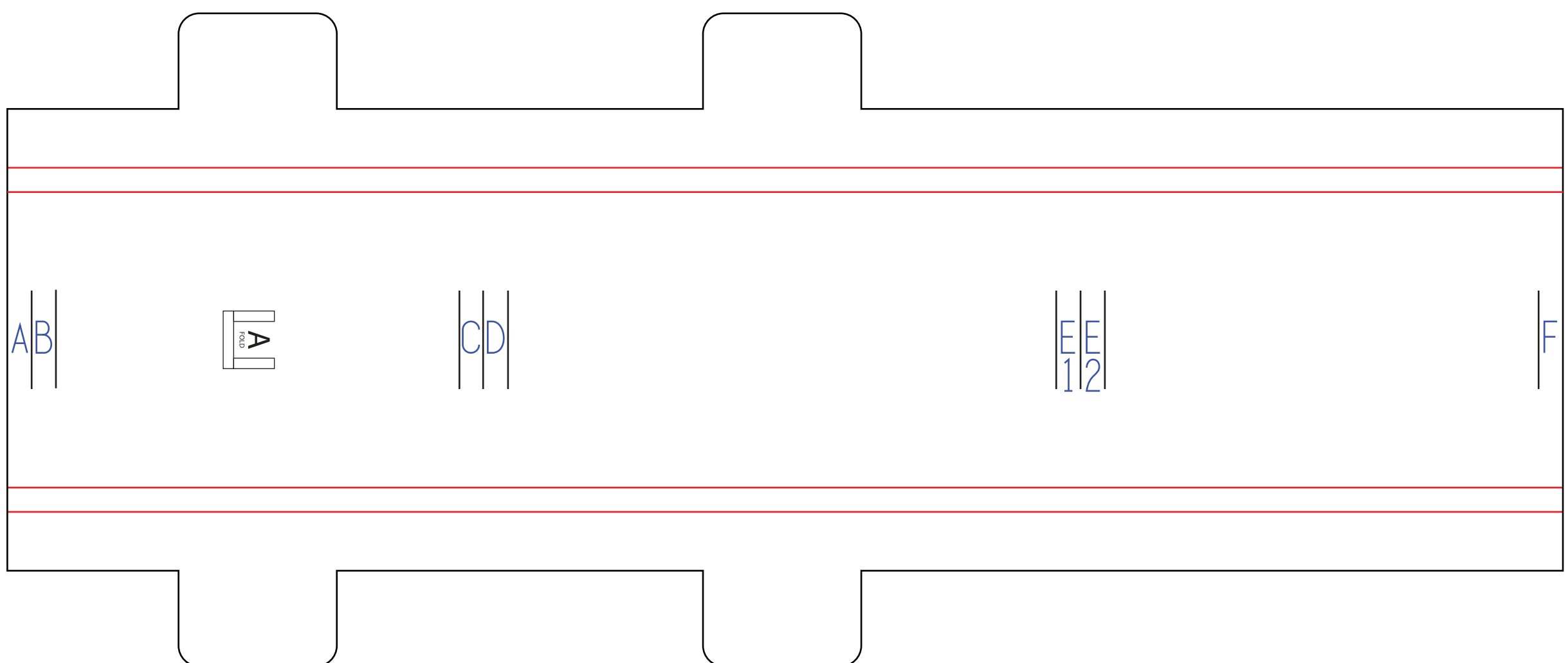
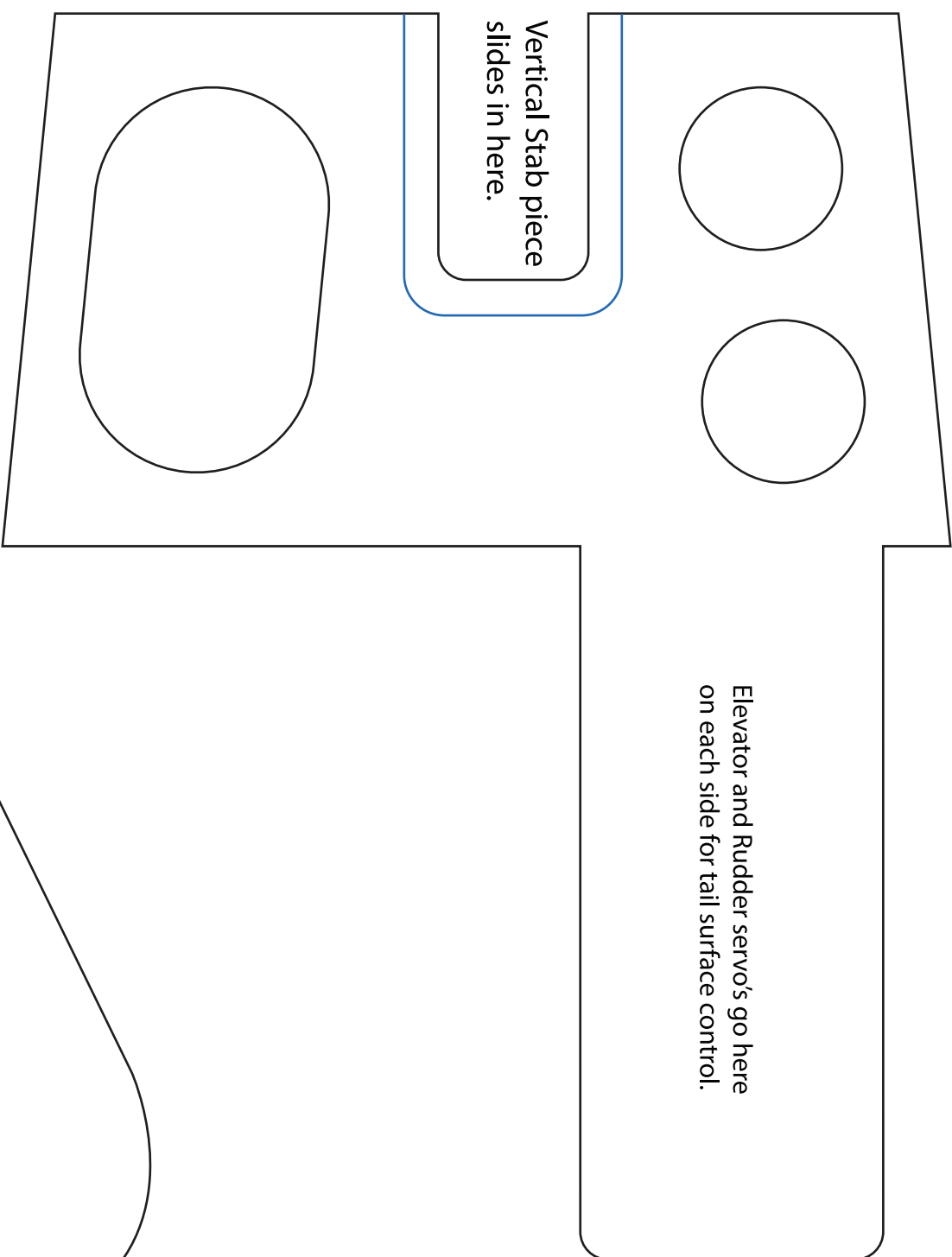
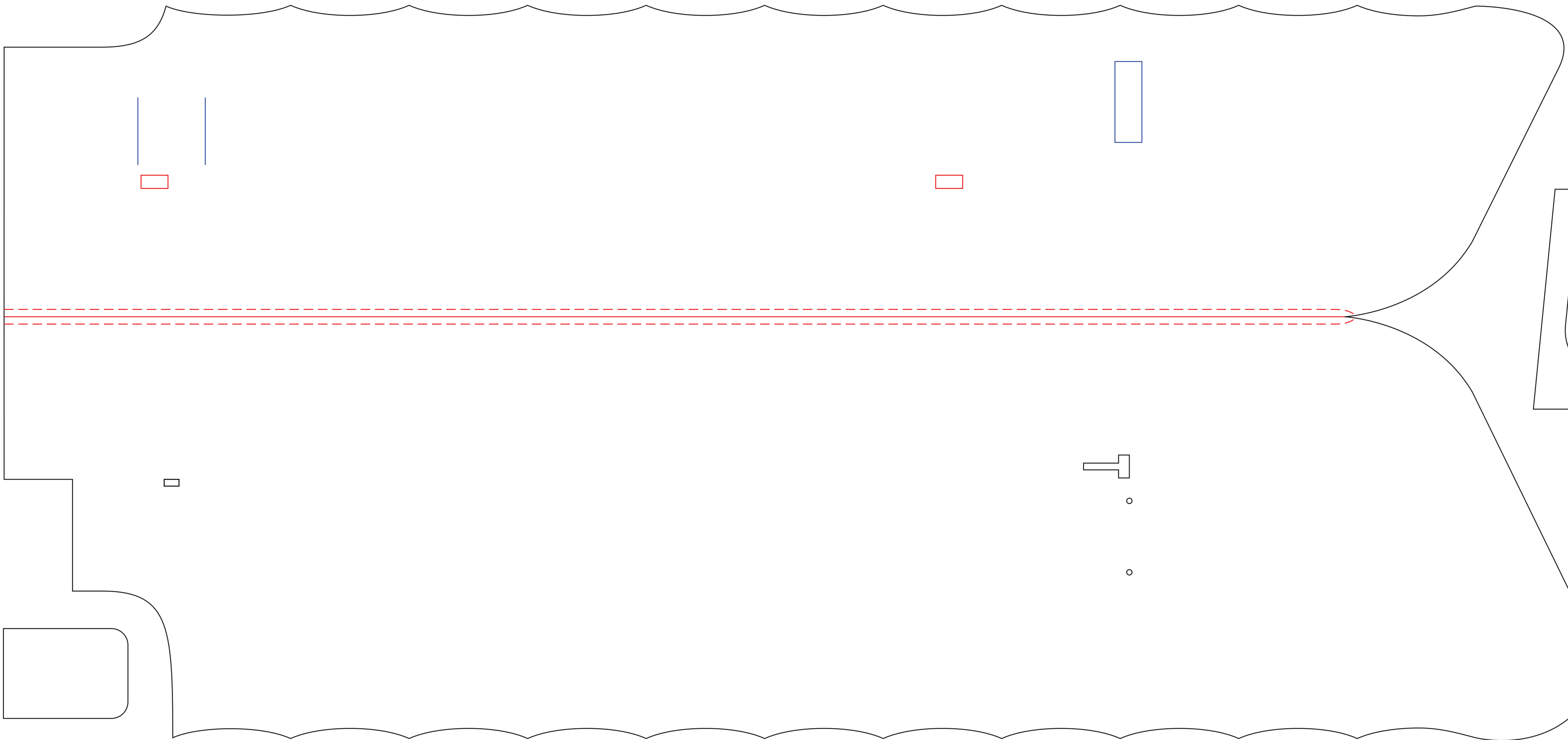
Wingtip String Guide

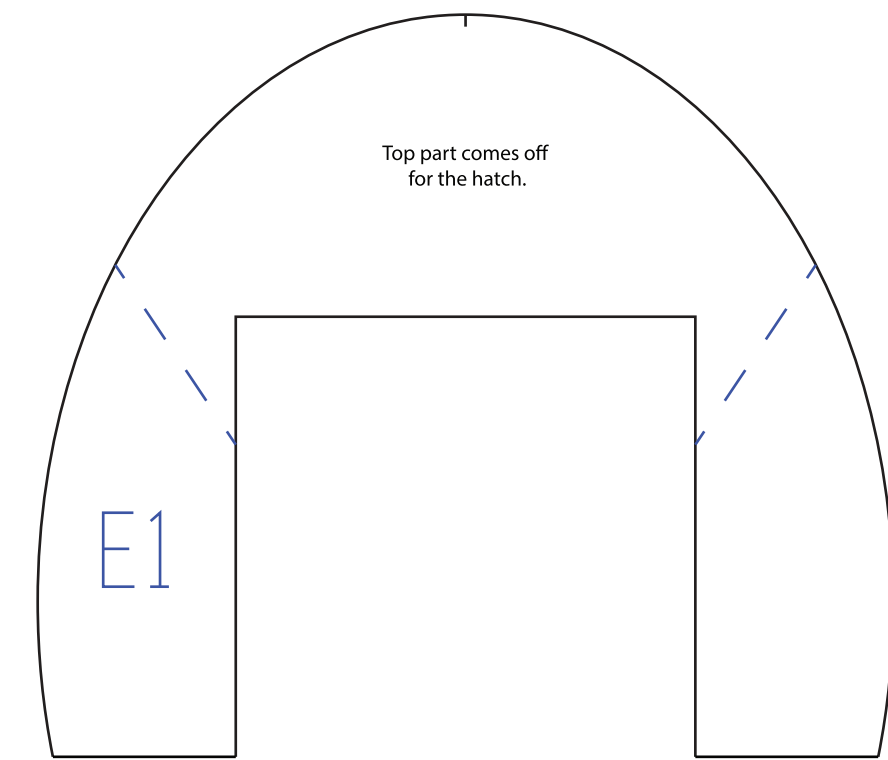
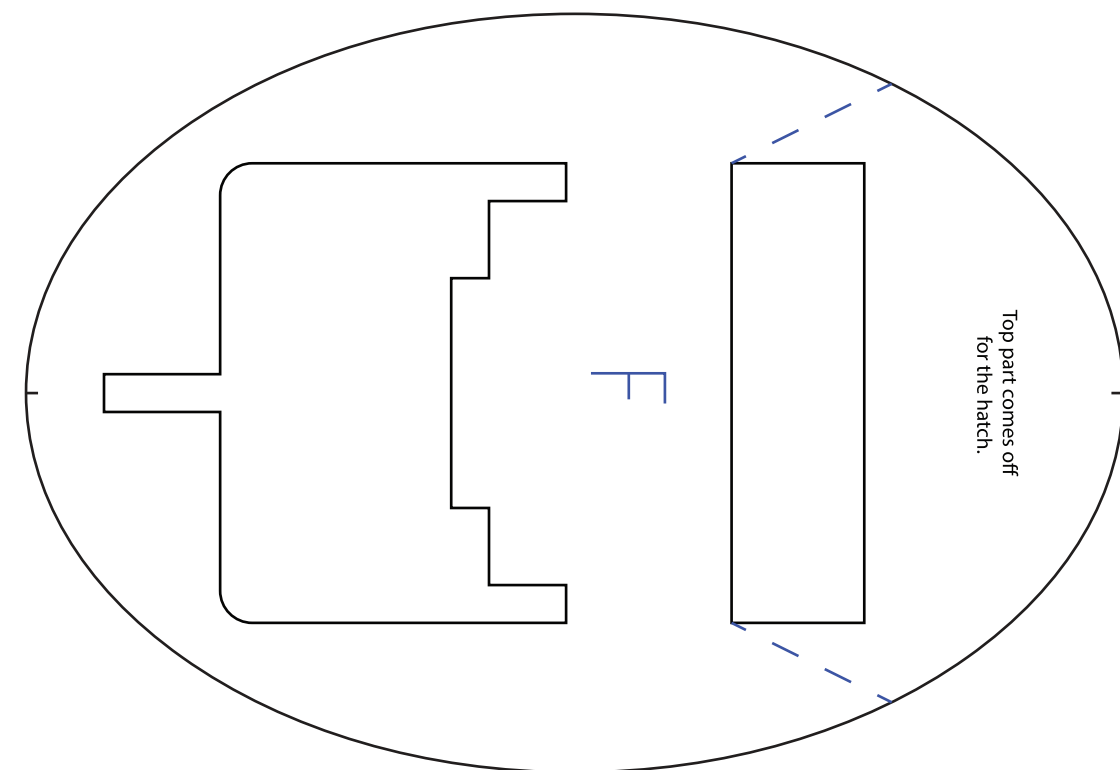
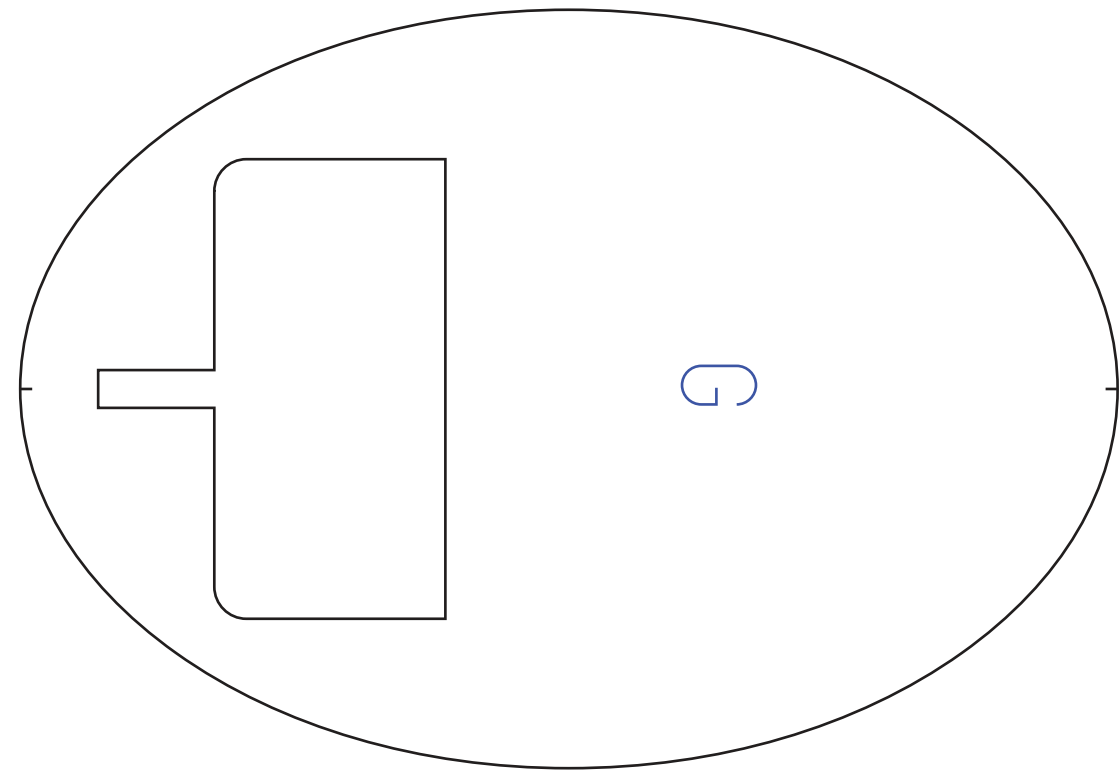
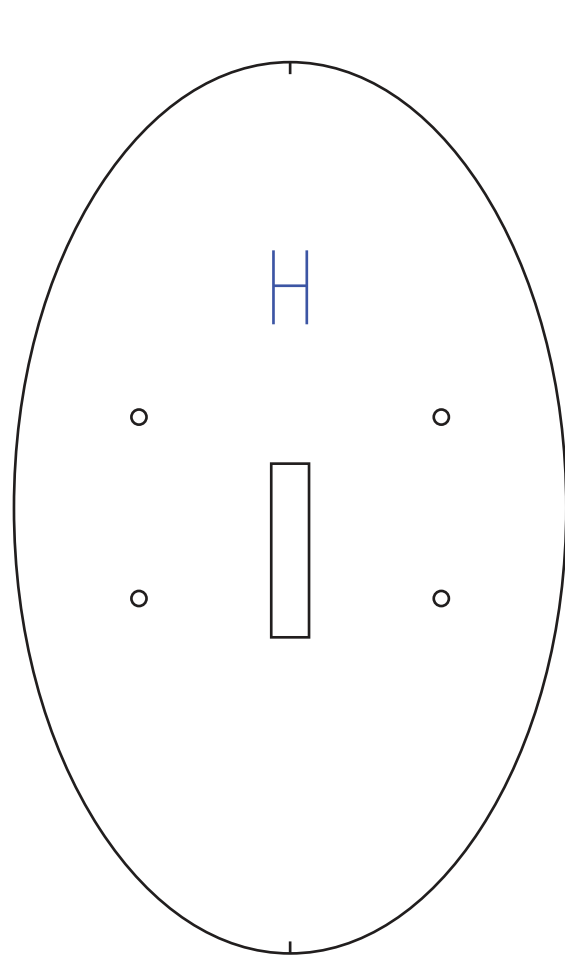
Center String Guide

A

H

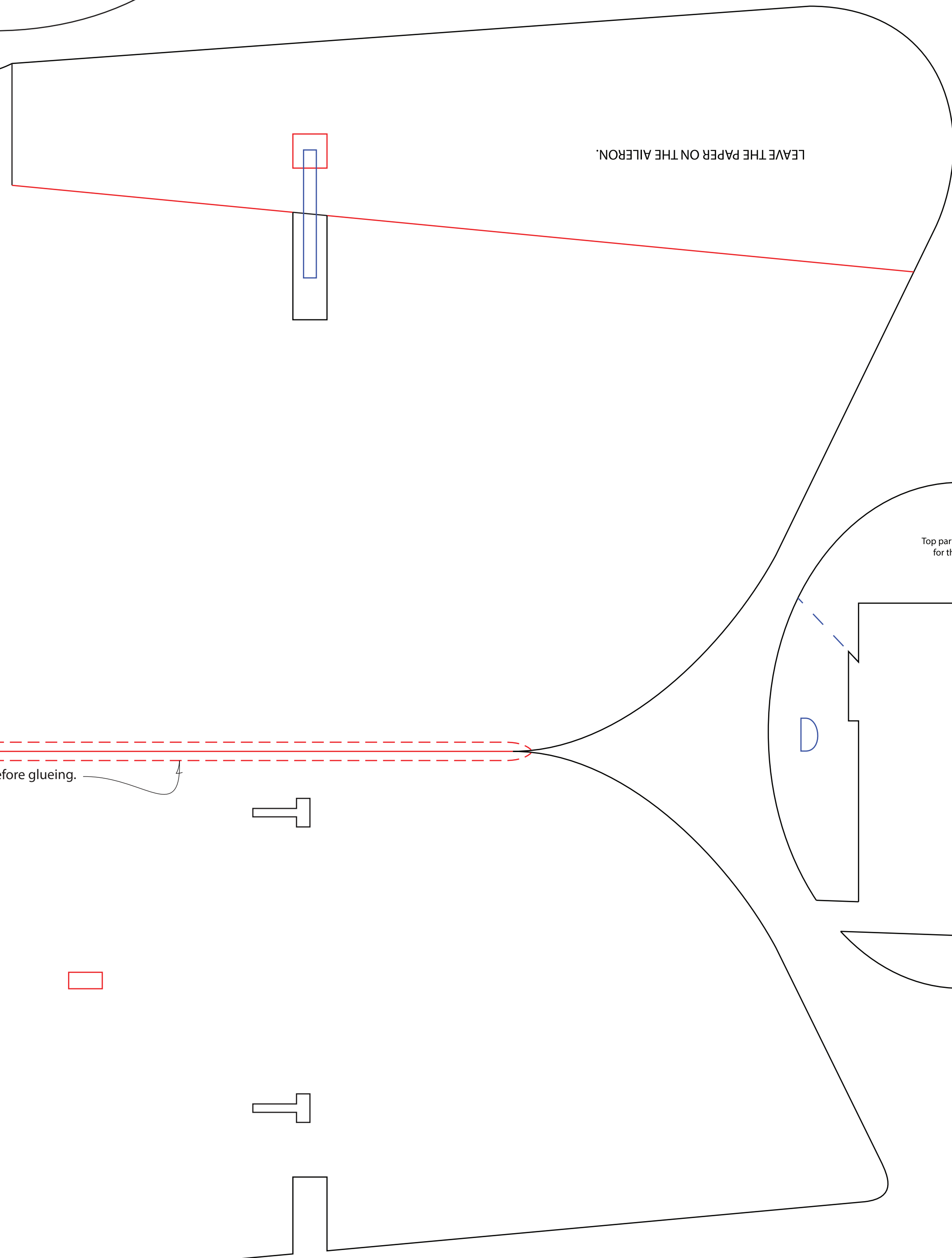
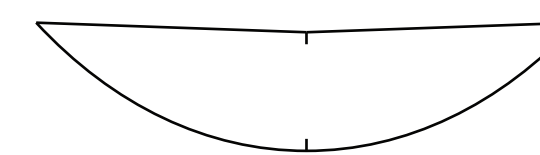
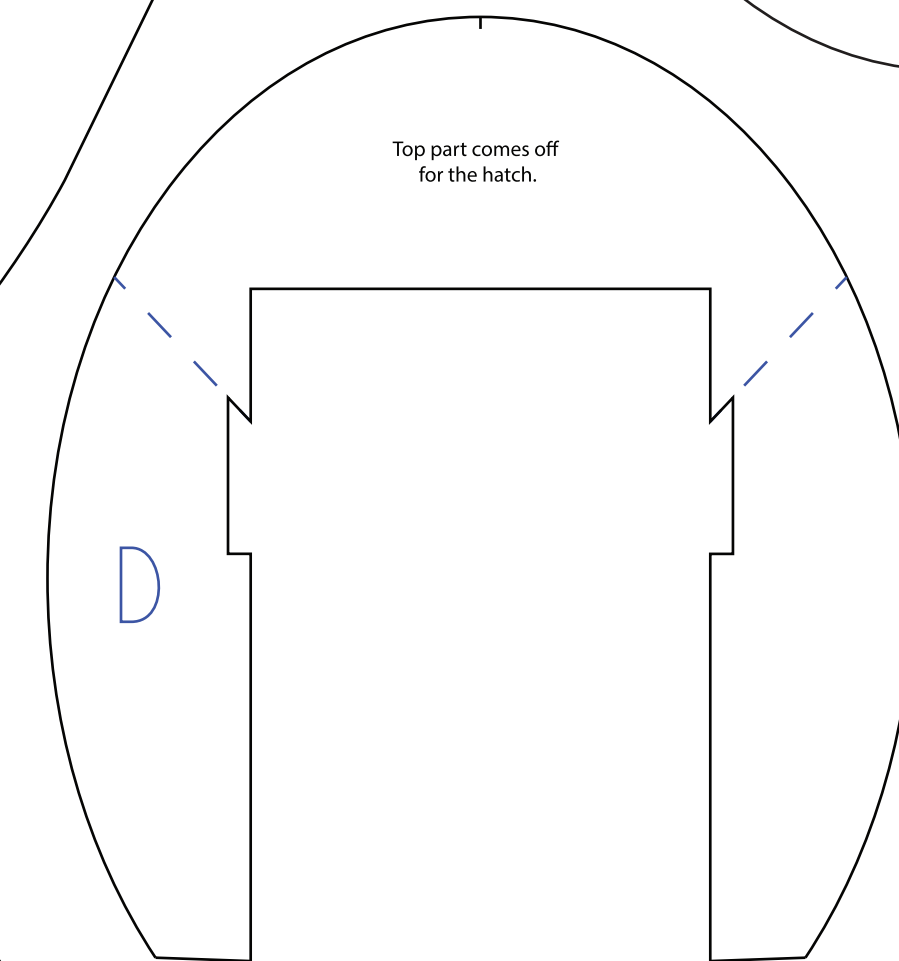
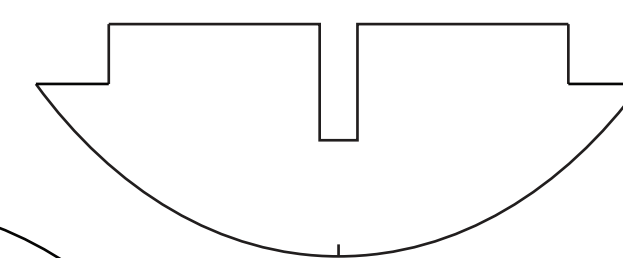
B





Space for Rear Landing Gear Mount

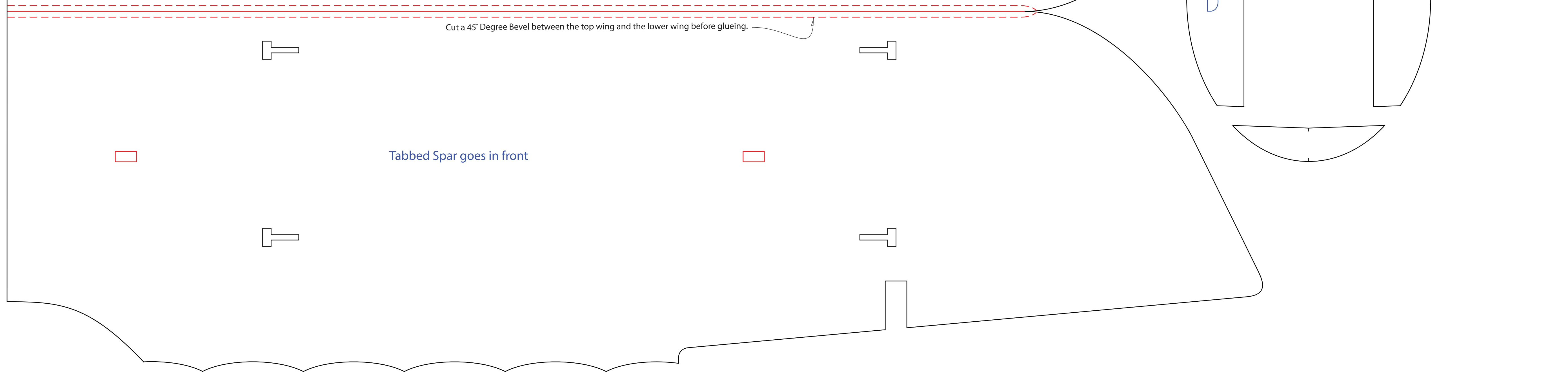
Space for Rear Landing Gear Mount

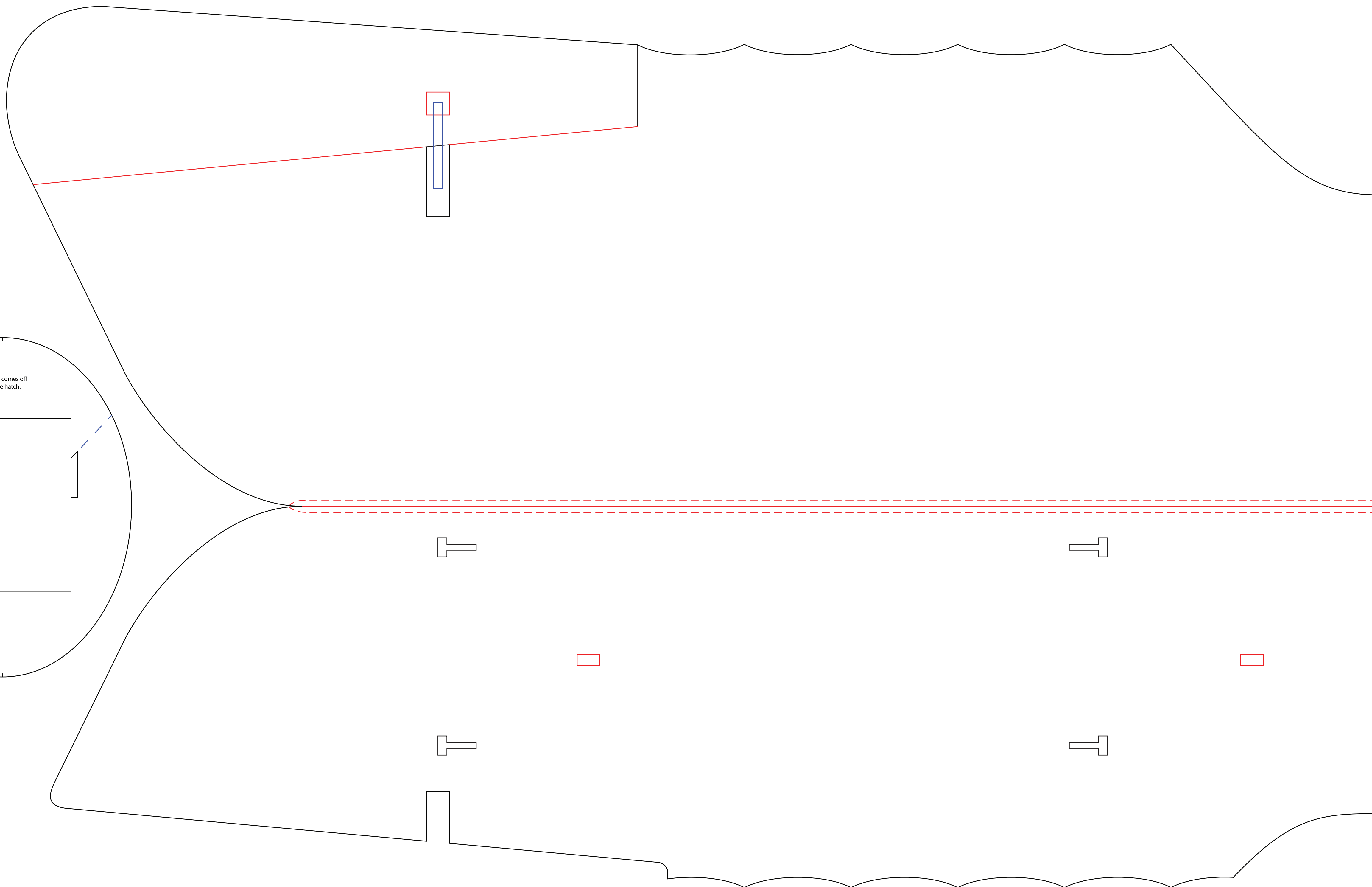
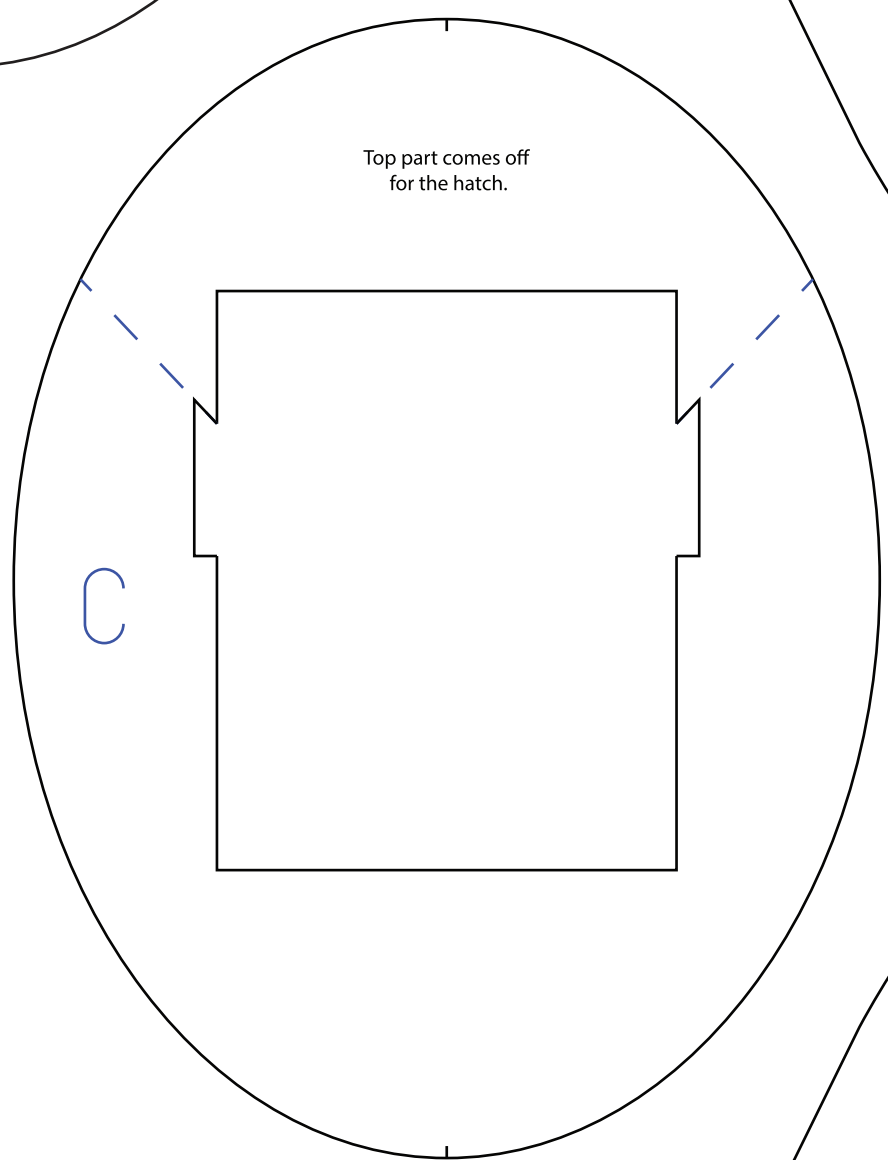
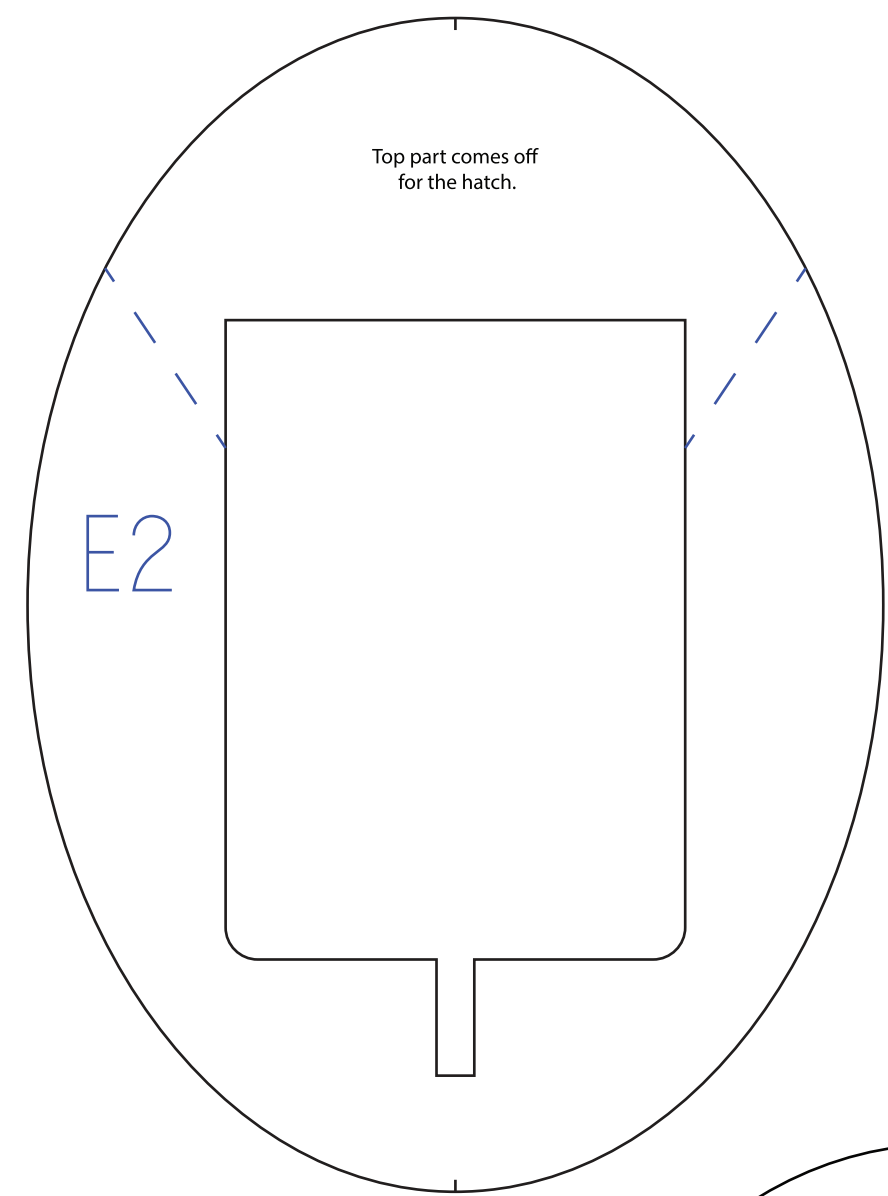


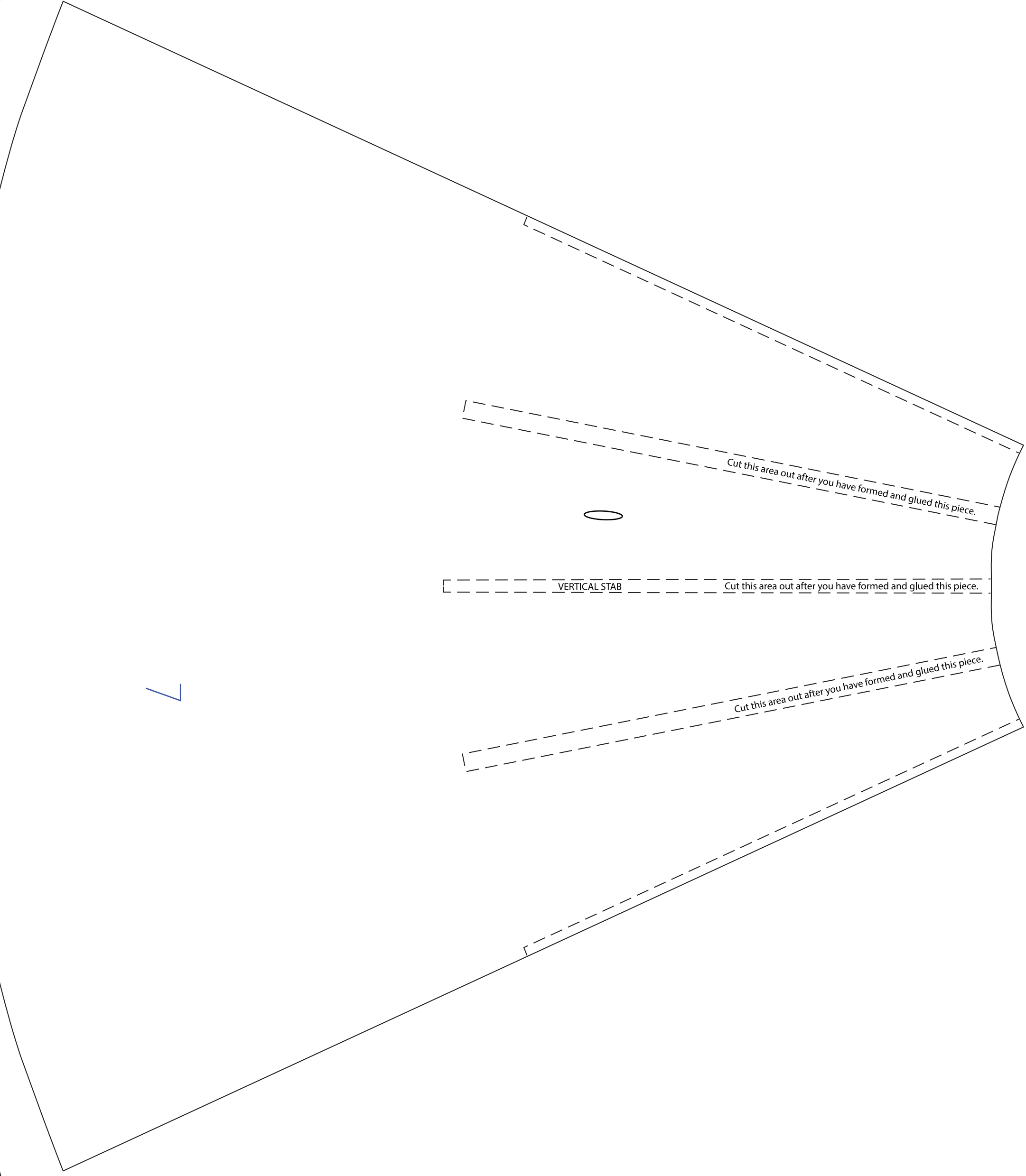
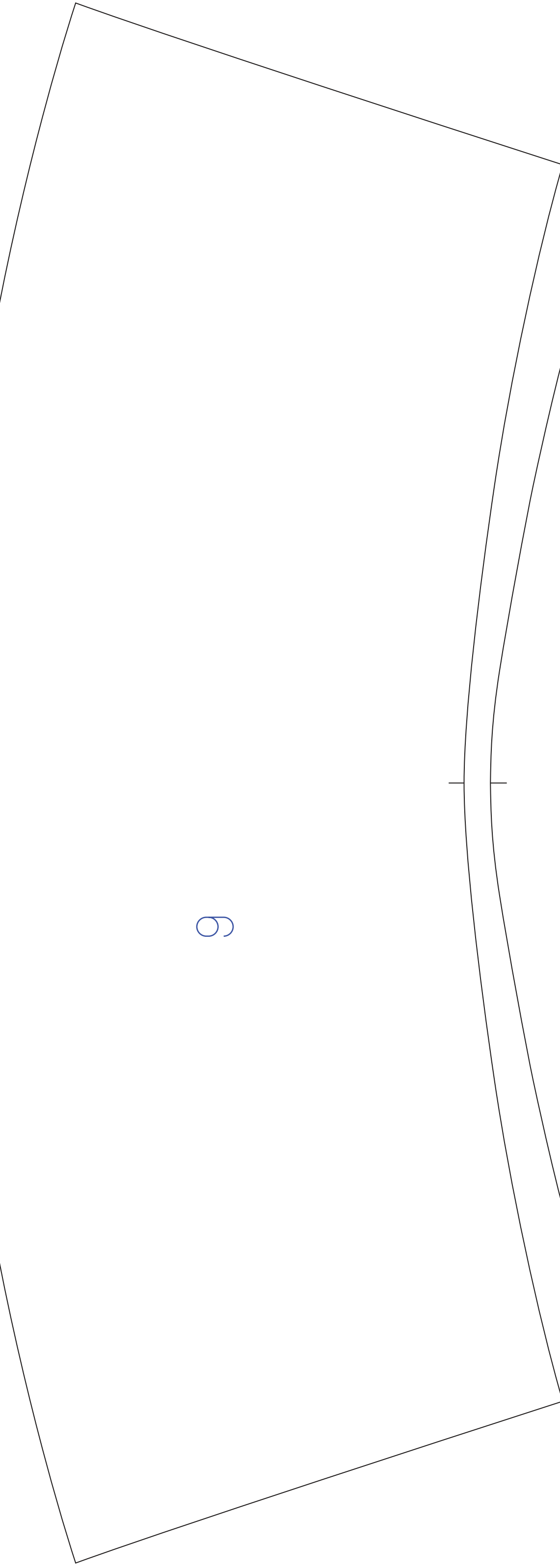
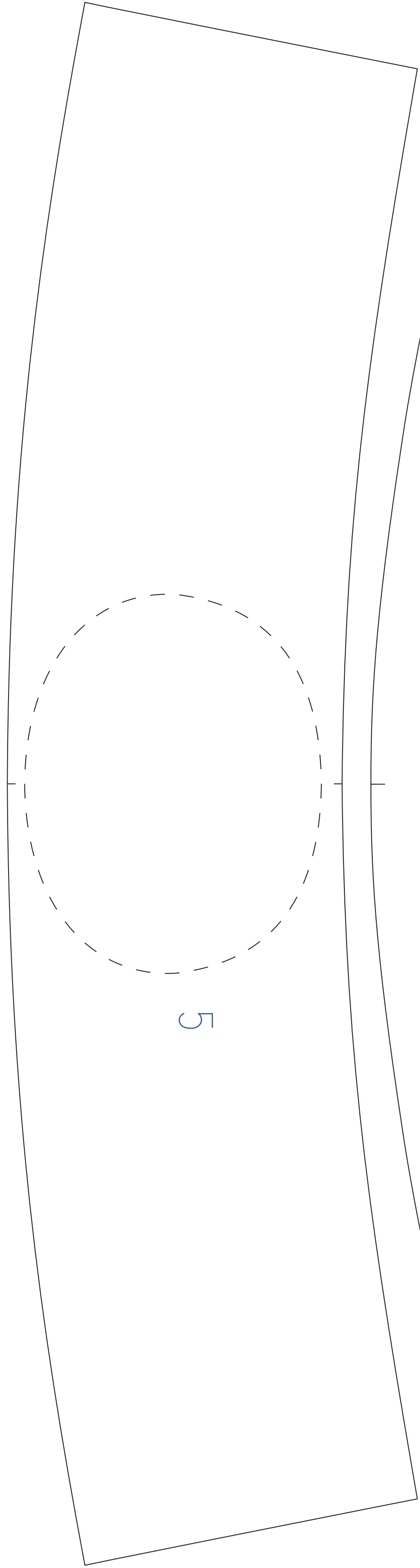
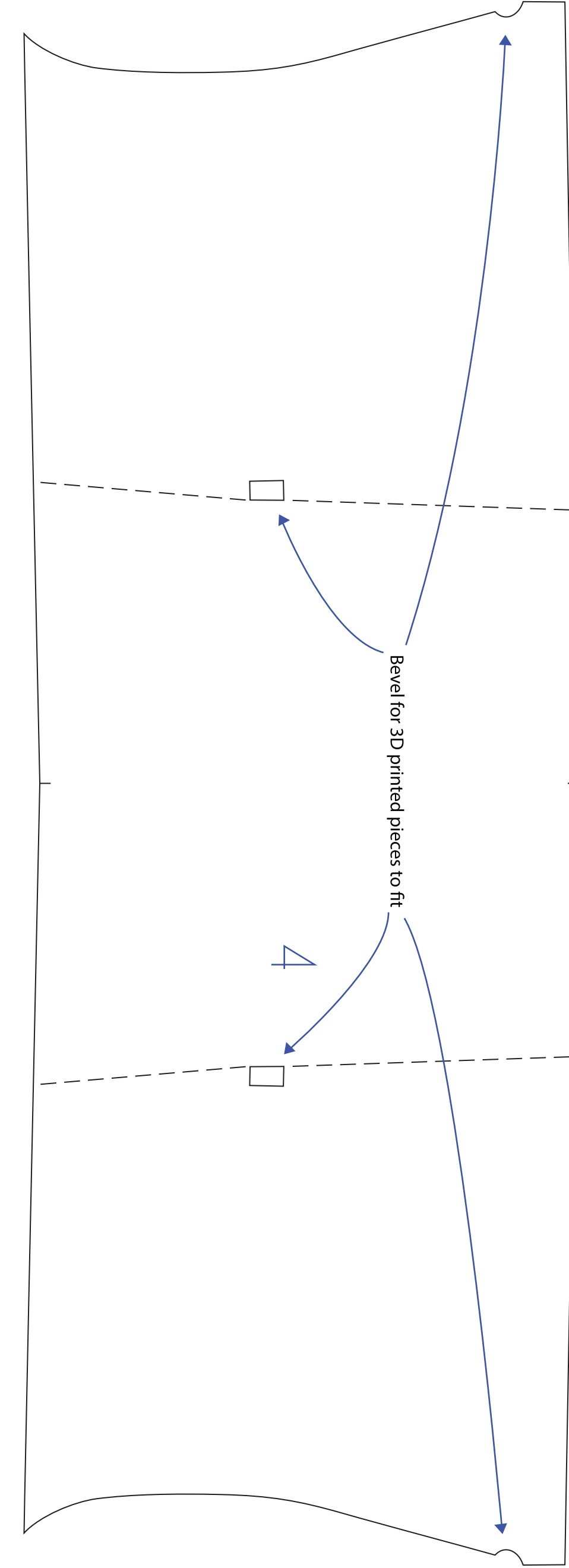
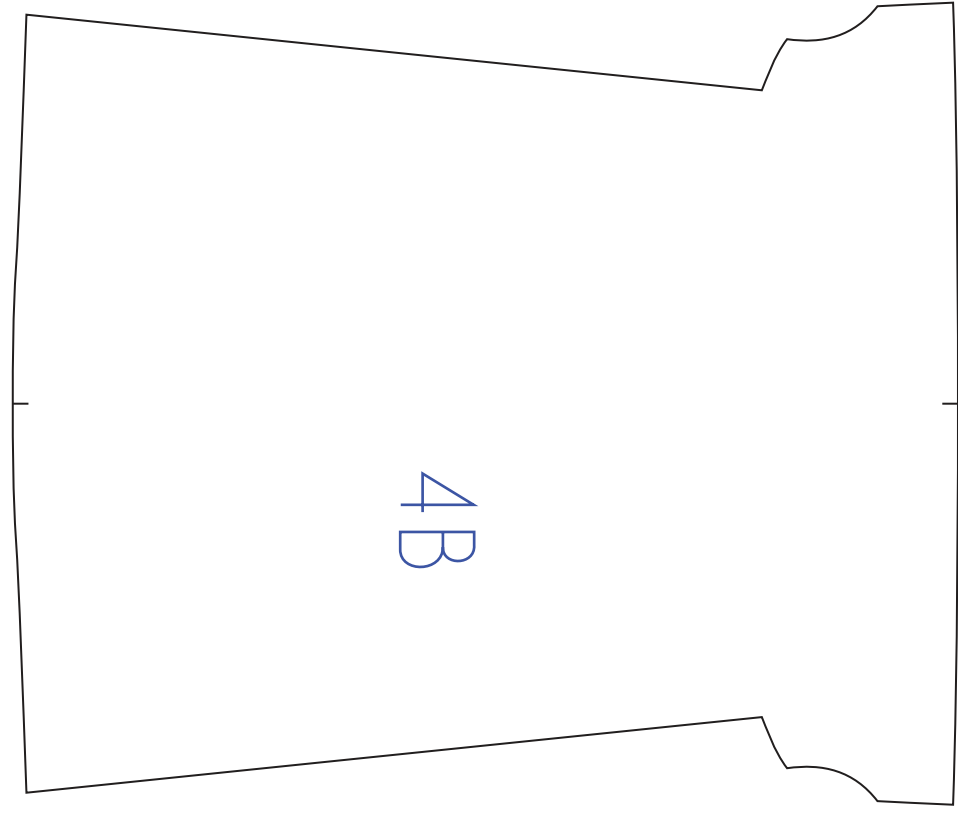
Peel off the paper here.

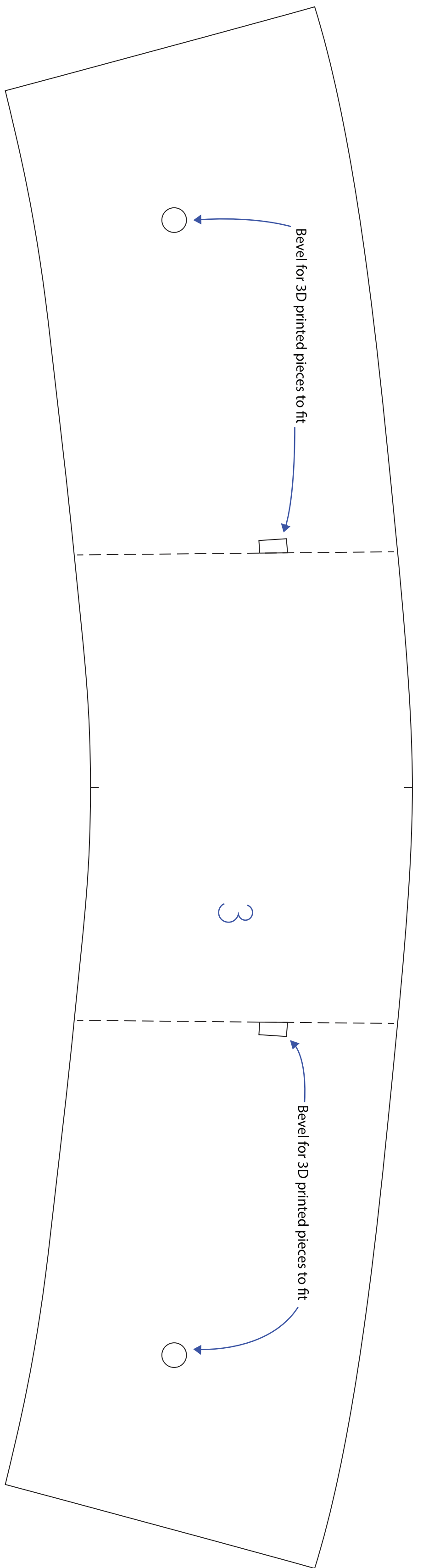
Cut a 45° Degree Bevel between the top wing and the lower wing before glueing.

Tabbed Spar goes in front









Holes on Molded Piece two are for Engine Cowling Flyby Wire Mount

