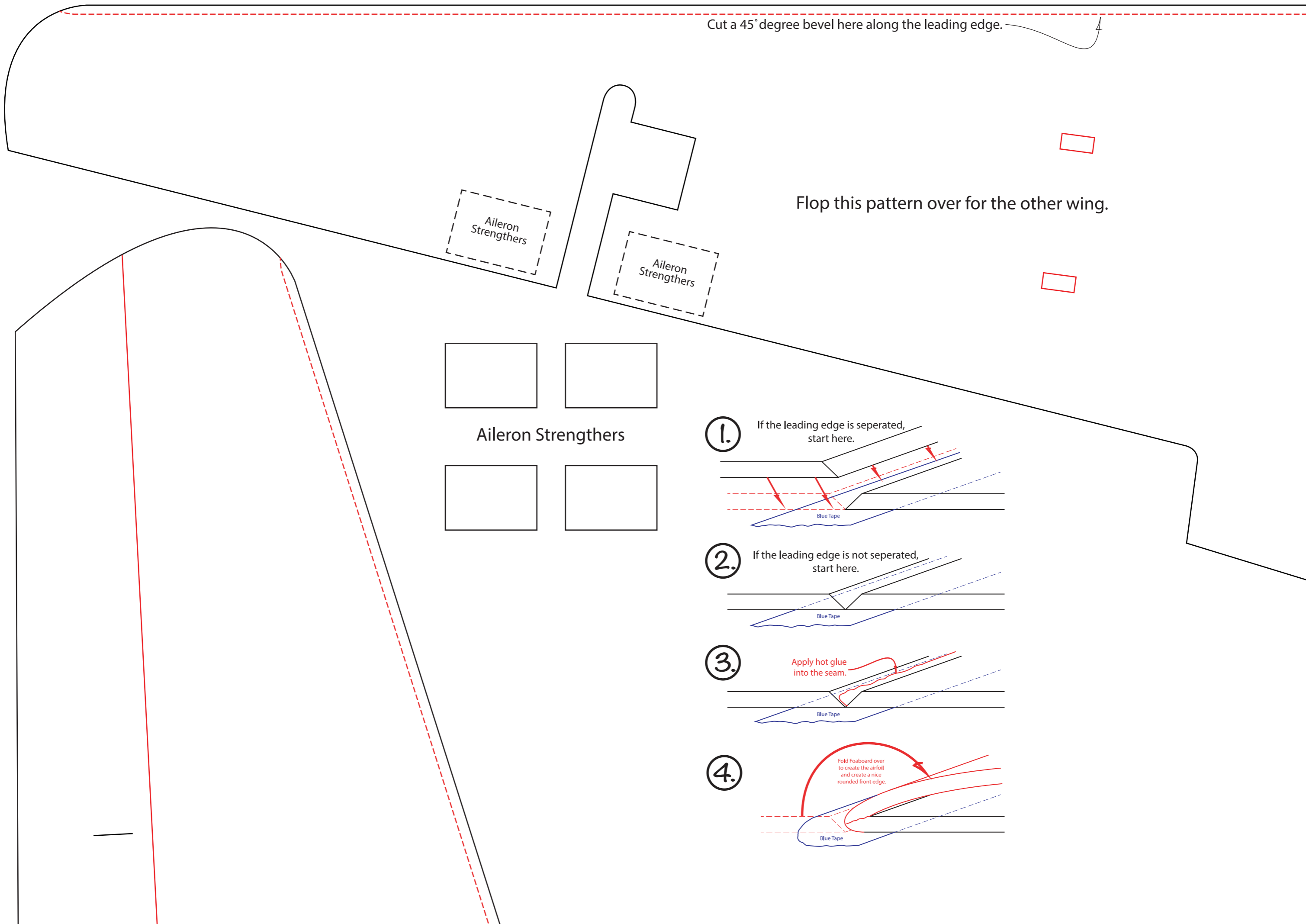


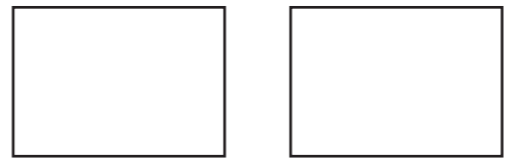
Cut a 45° degree bevel here along the leading edge.



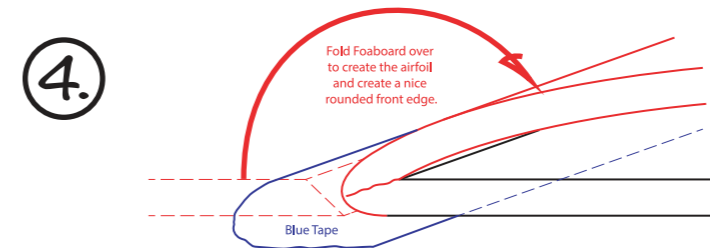
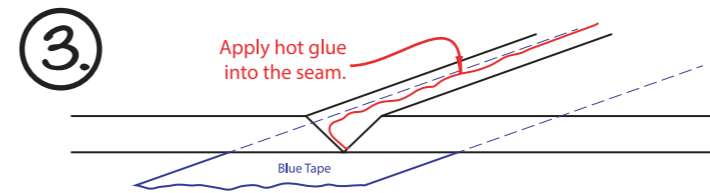
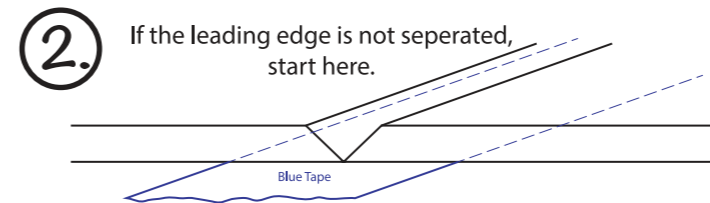
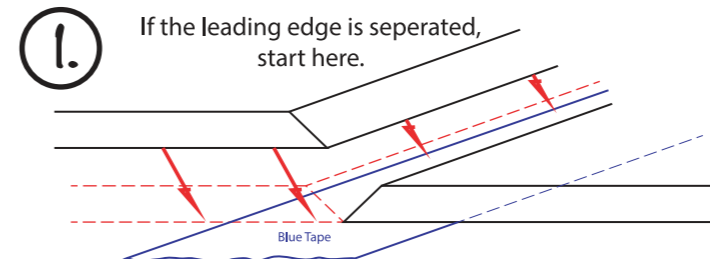
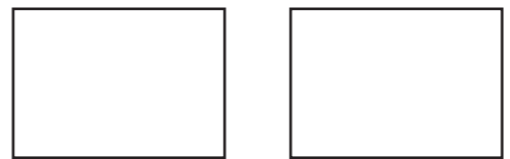
Aileron
Strengthers

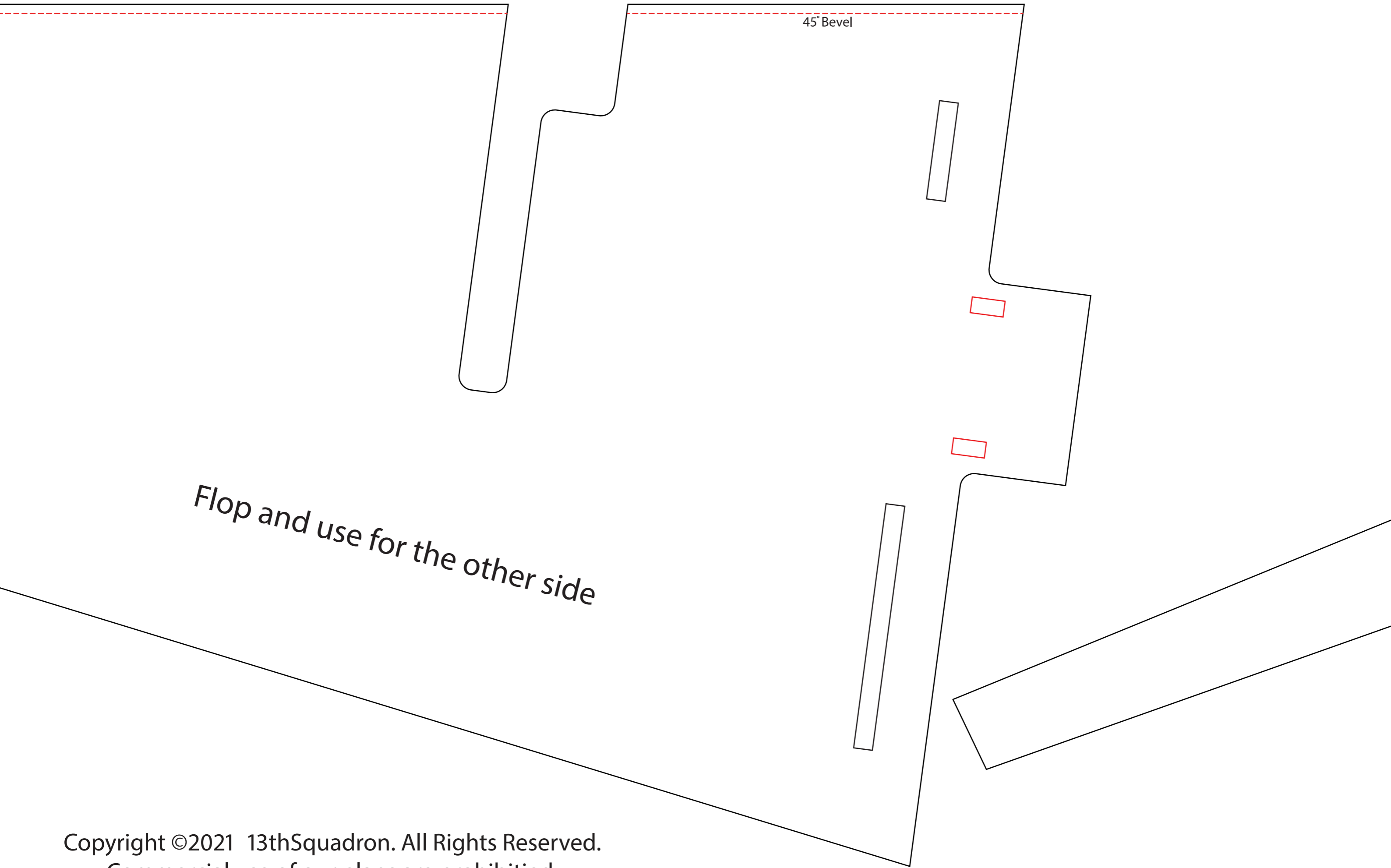
Aileron
Strengthers

Flop this pattern over for the other wing.



Aileron Strengthers



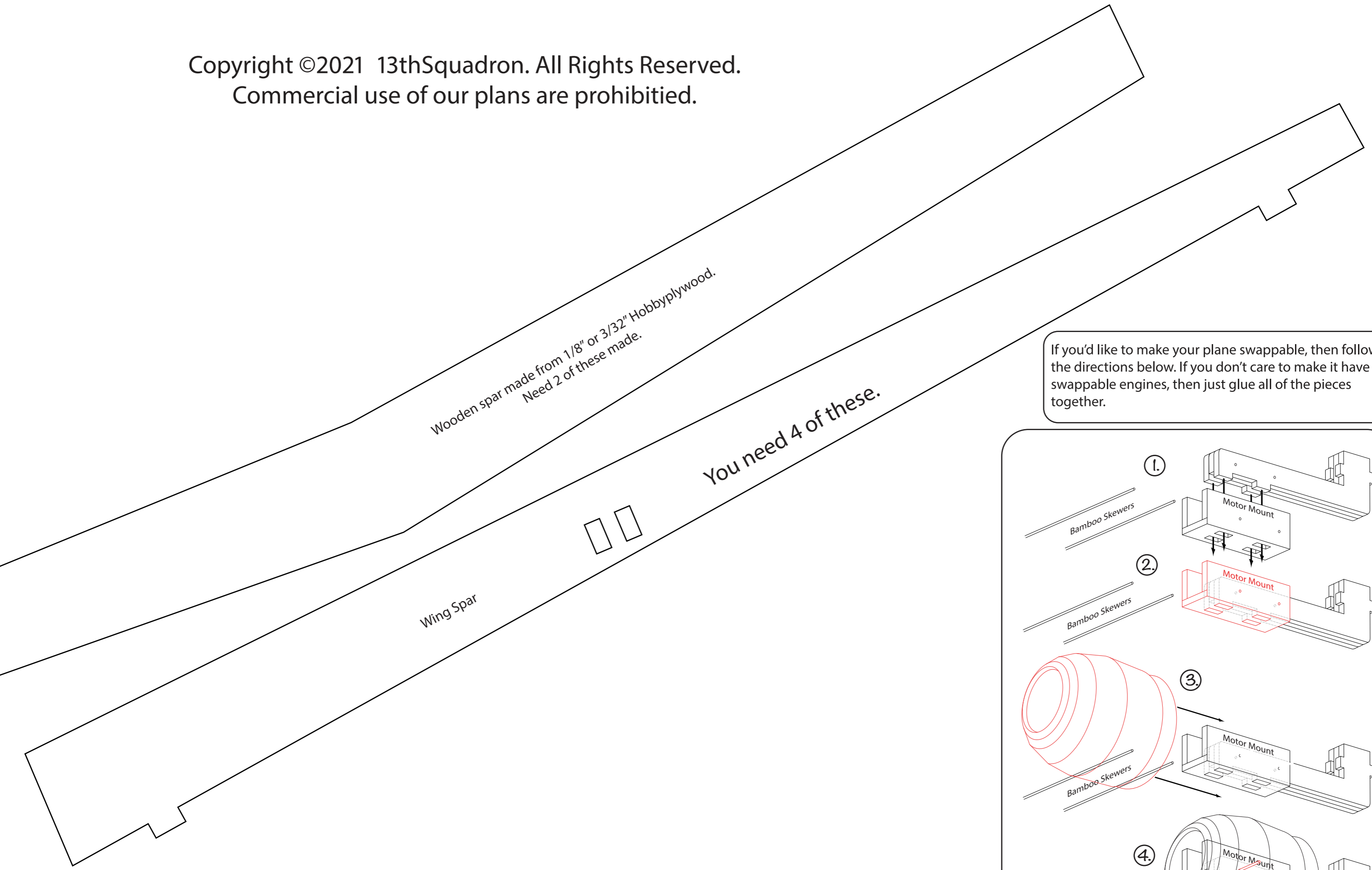


45° Bevel

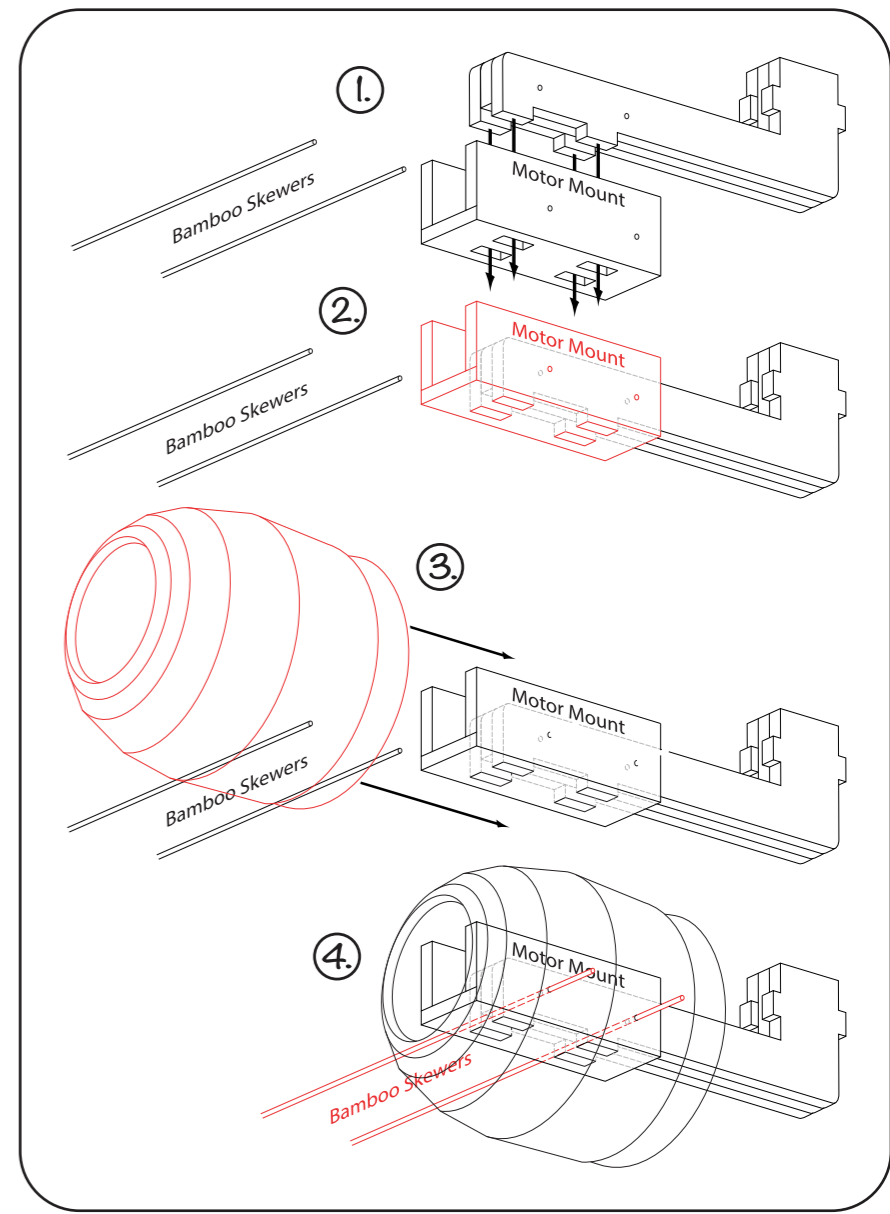
Flop and use for the other side

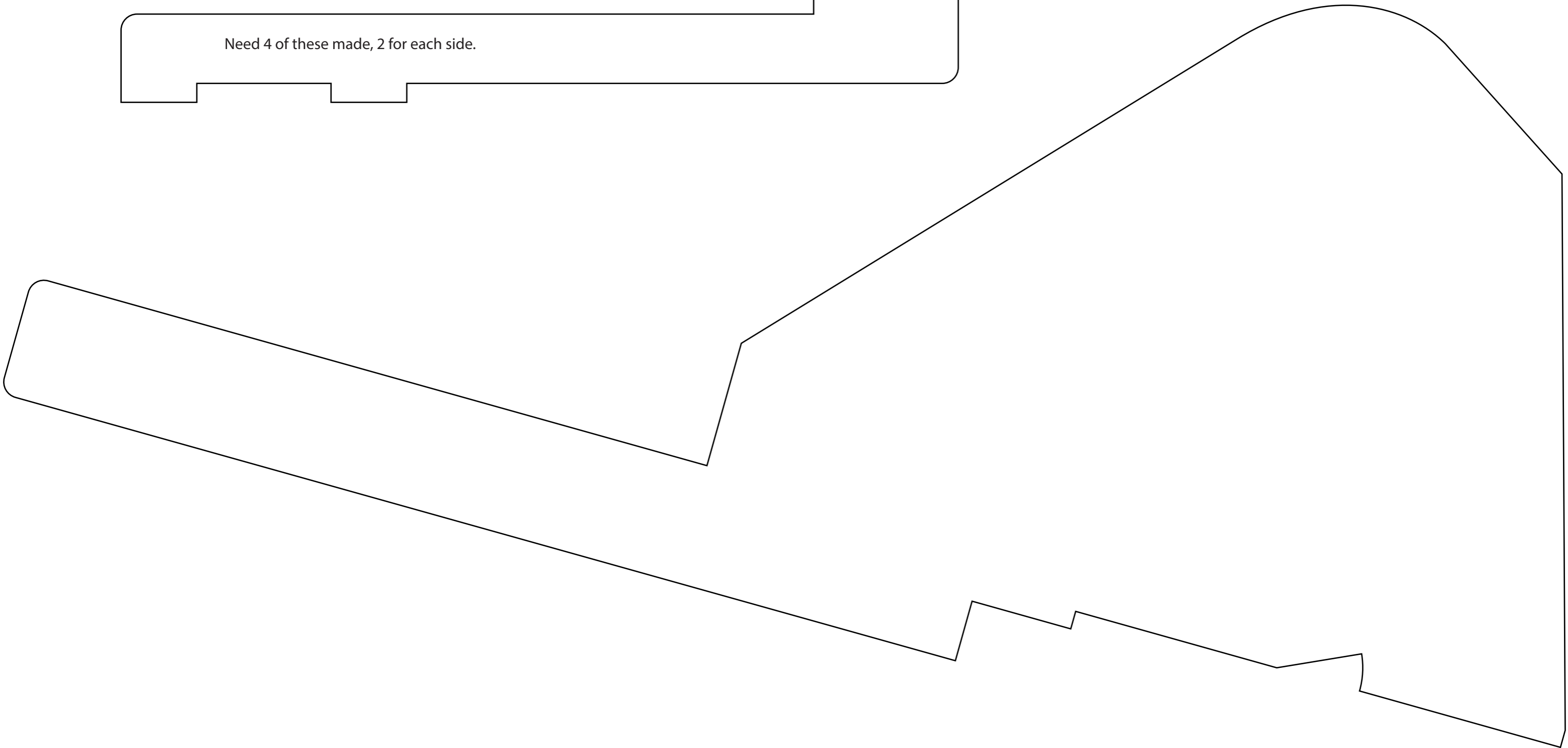
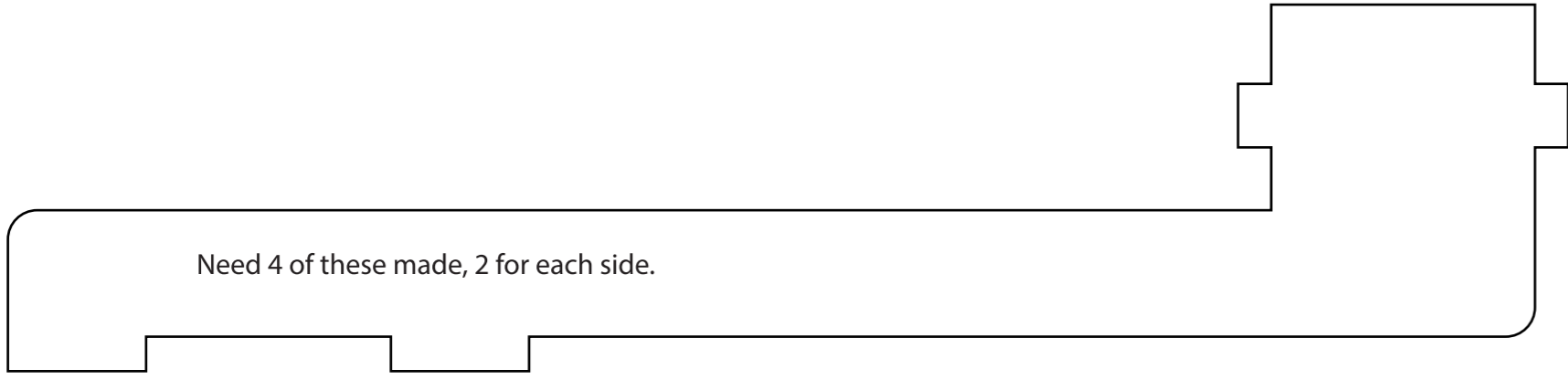
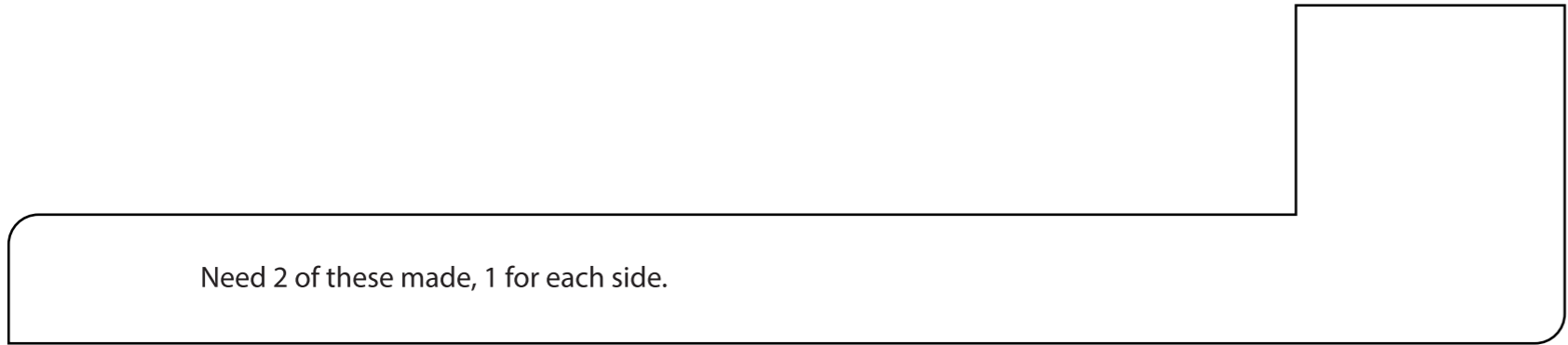
Copyright ©2021 13thSquadron. All Rights Reserved.
Commercial use of our plans are prohibited.

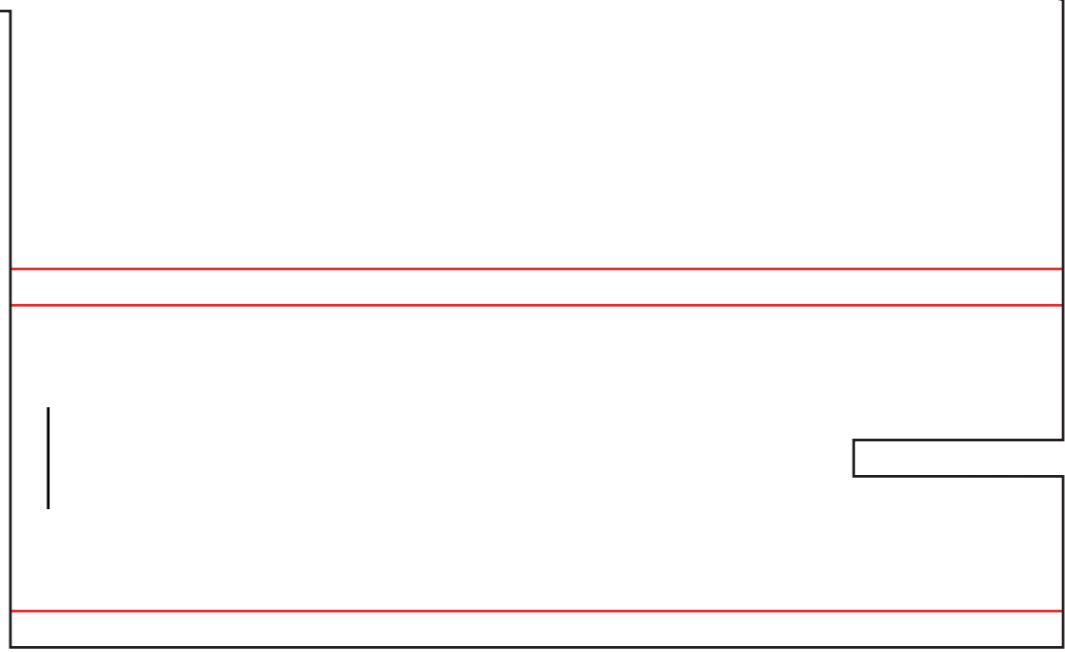
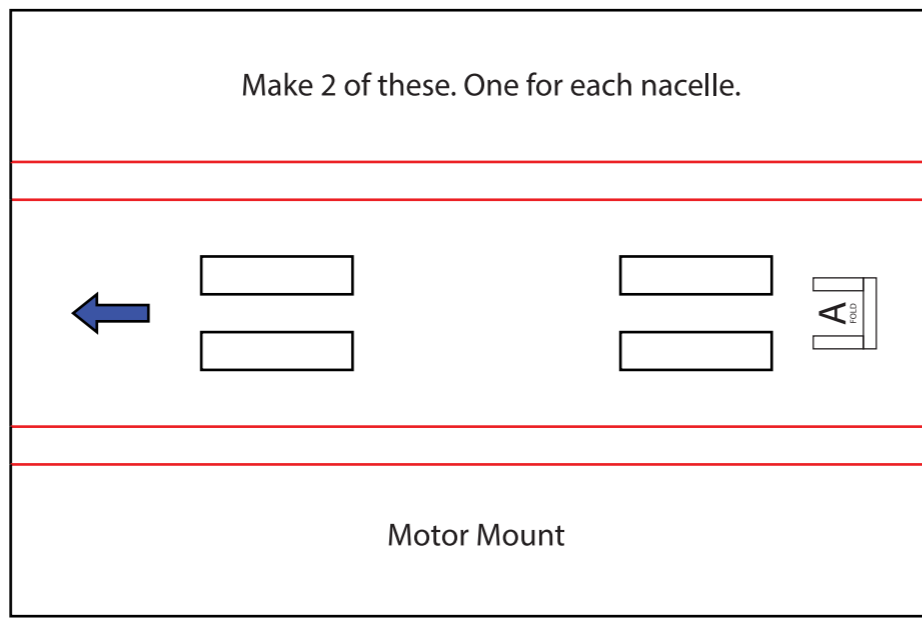
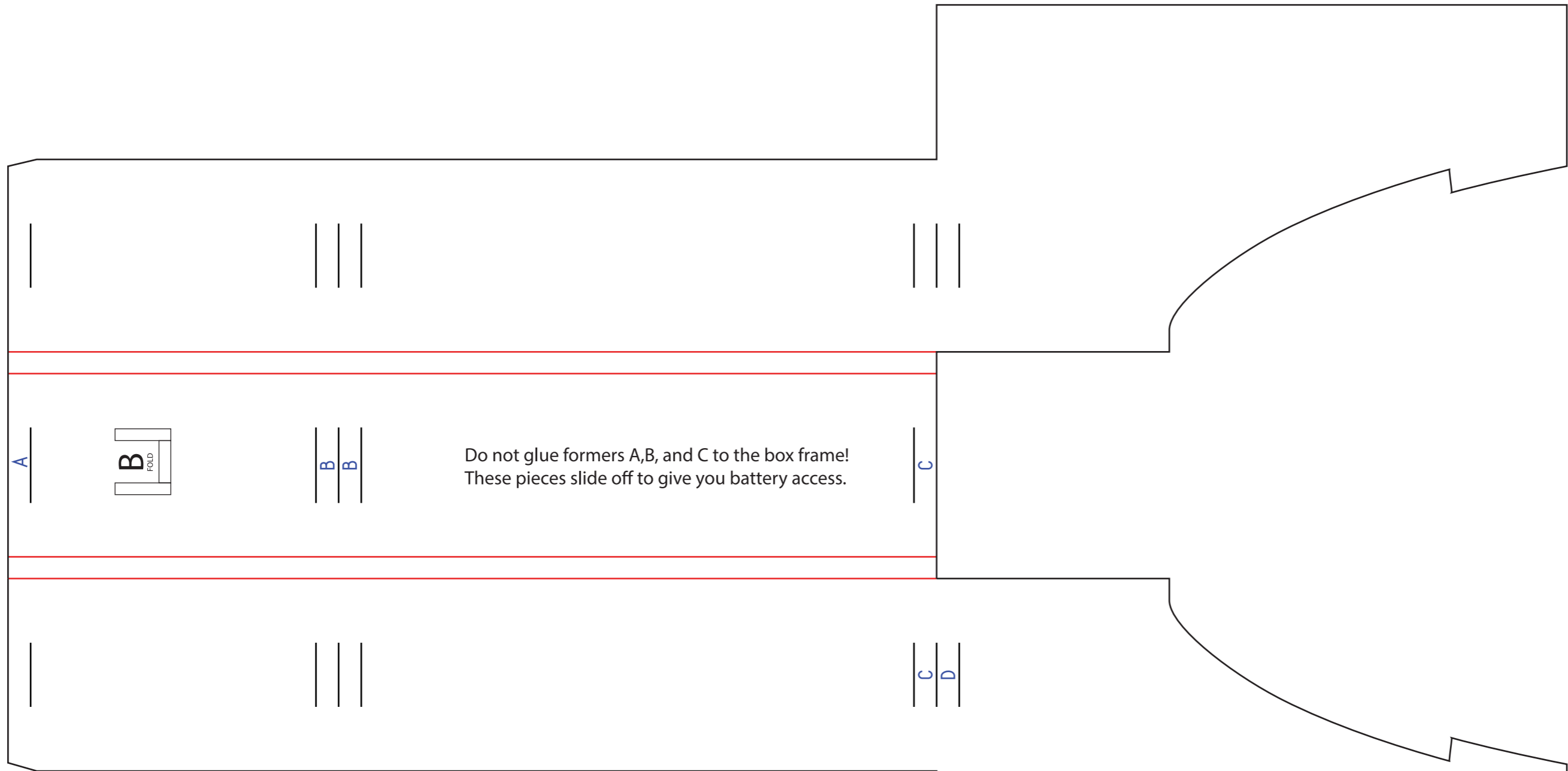
Copyright ©2021 13thSquadron. All Rights Reserved.
Commercial use of our plans are prohibited.

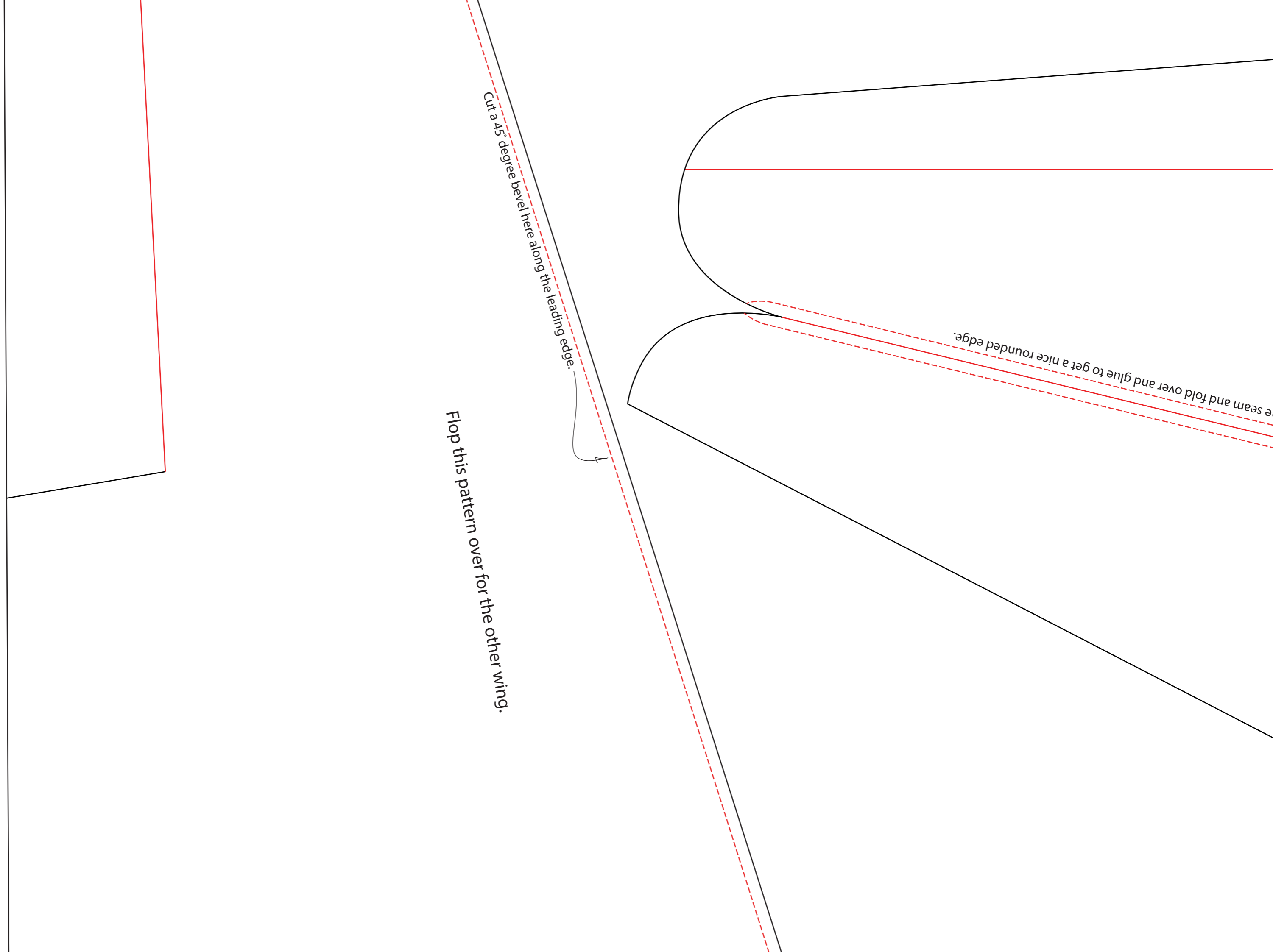


If you'd like to make your plane swappable, then follow the directions below. If you don't care to make it have swappable engines, then just glue all of the pieces together.





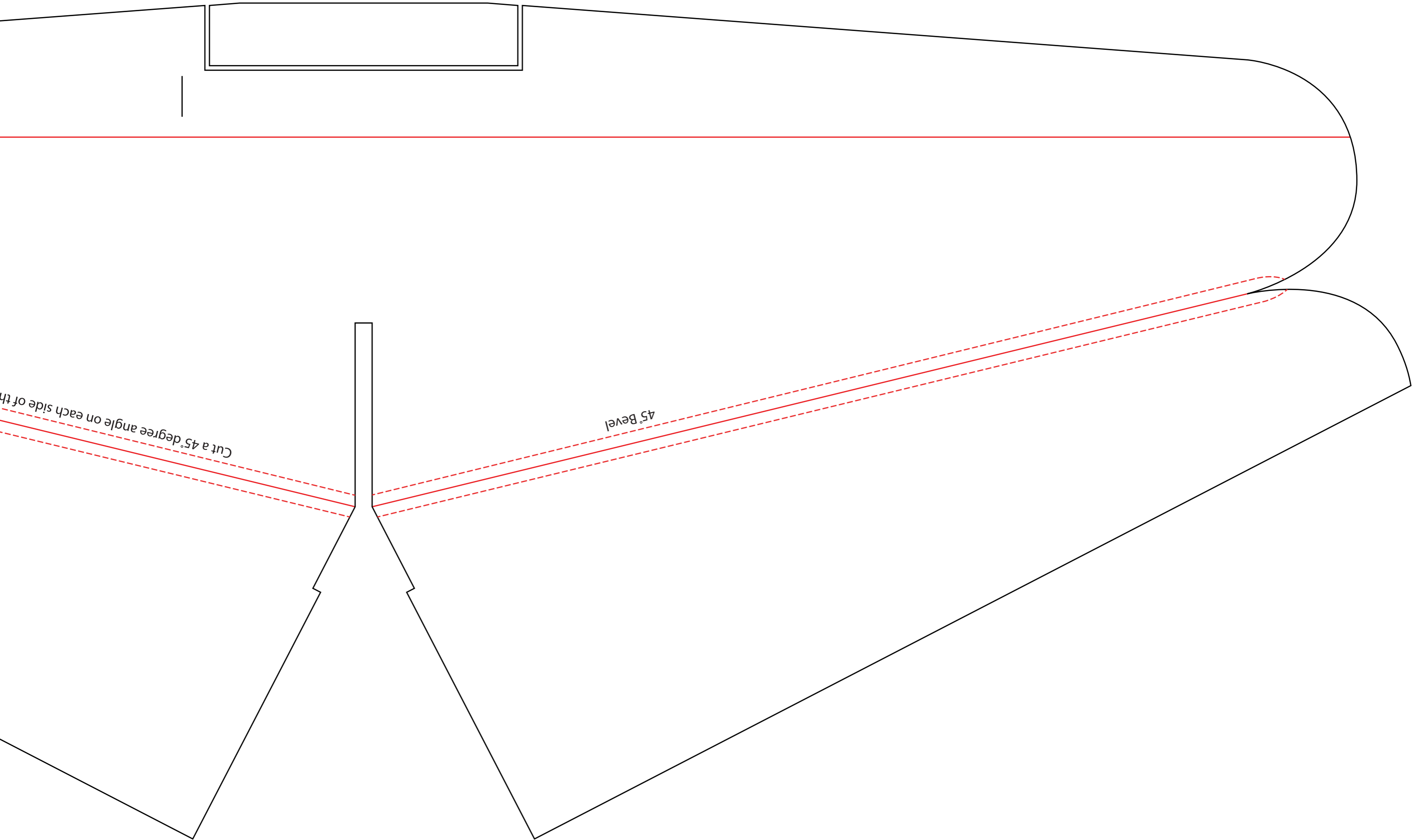


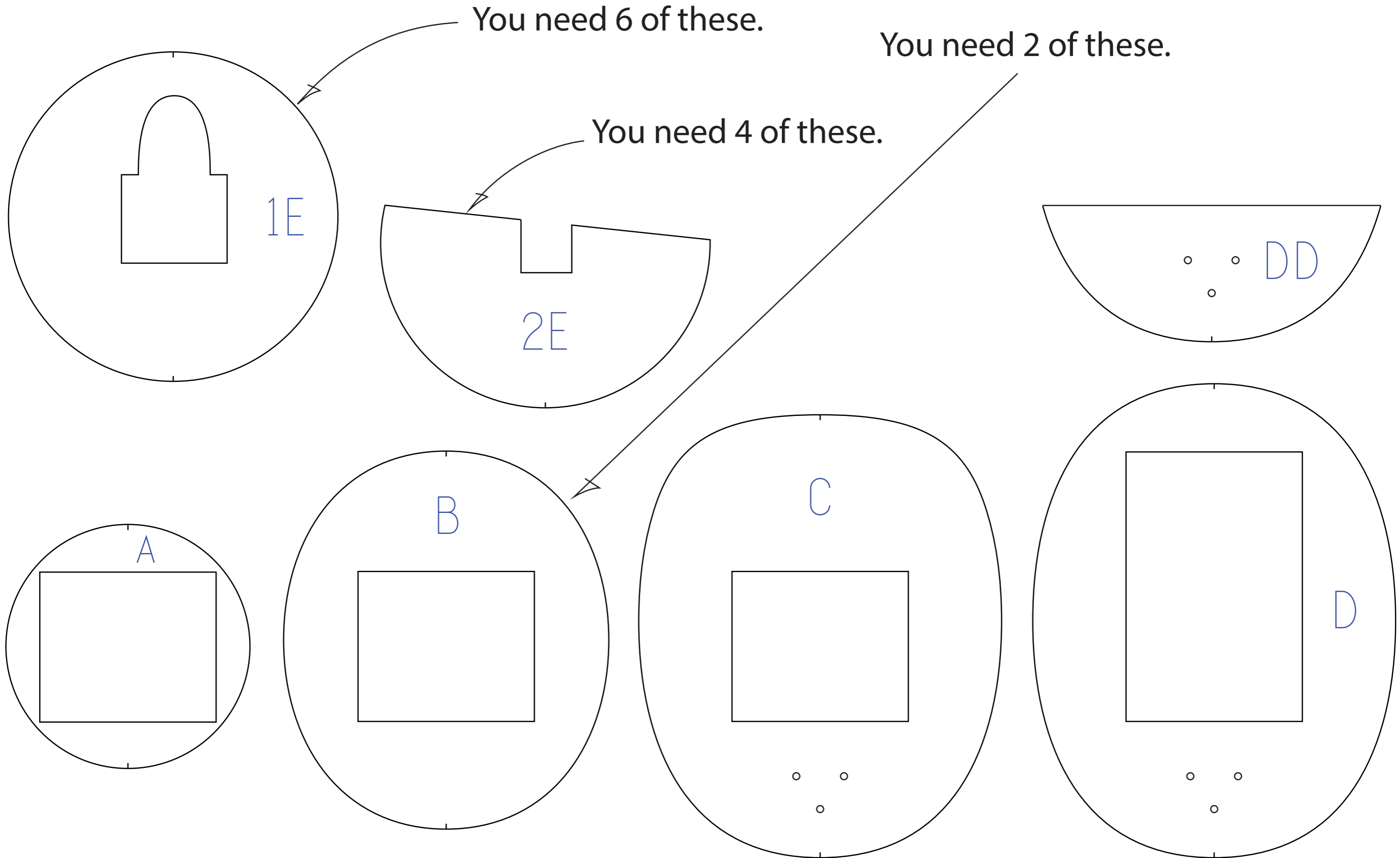


Cut a 45 degree bevel here along the leading edge.

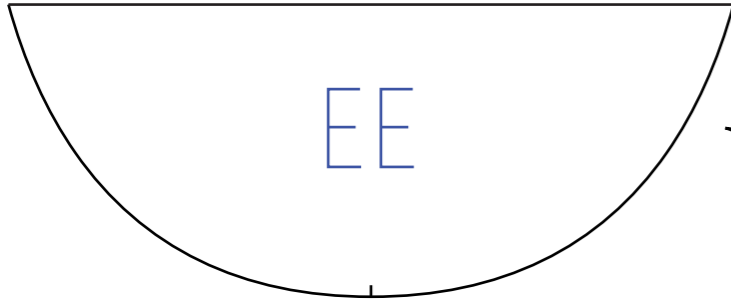
Flop this pattern over for the other wing.

seam and fold over and glue to get a nice rounded edge.

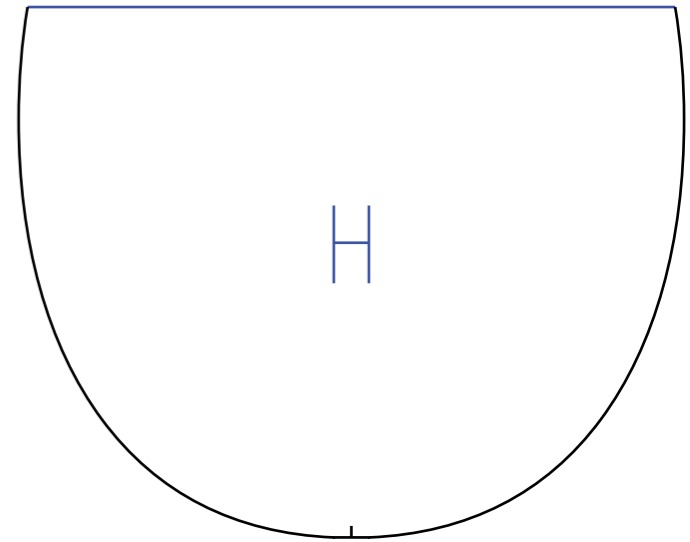
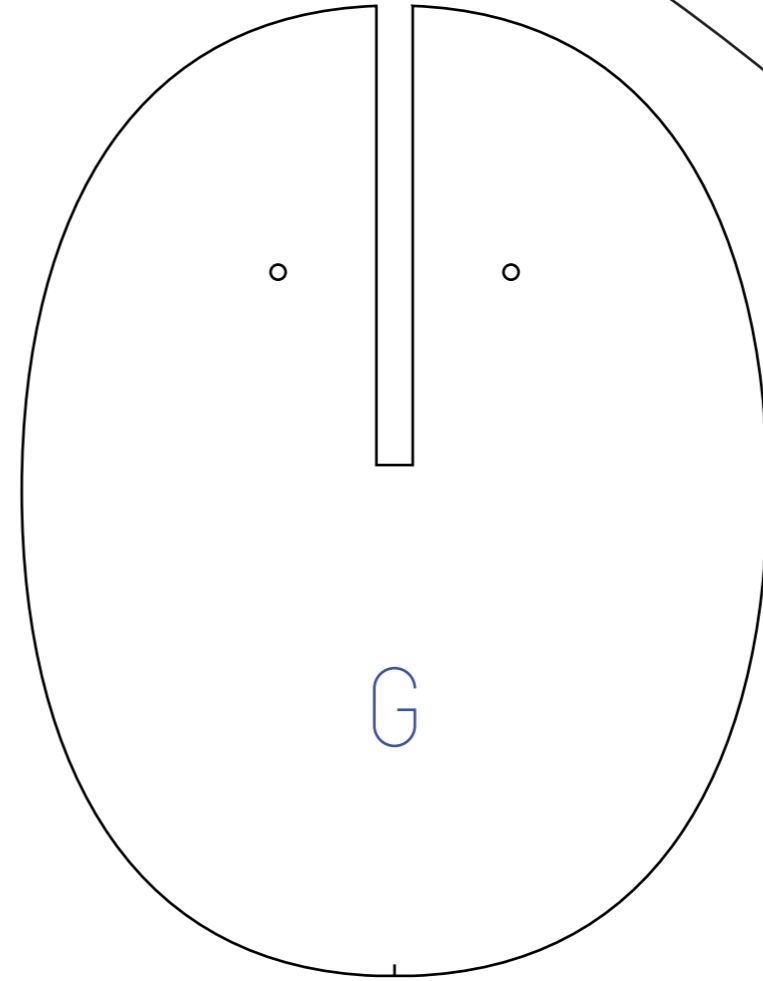
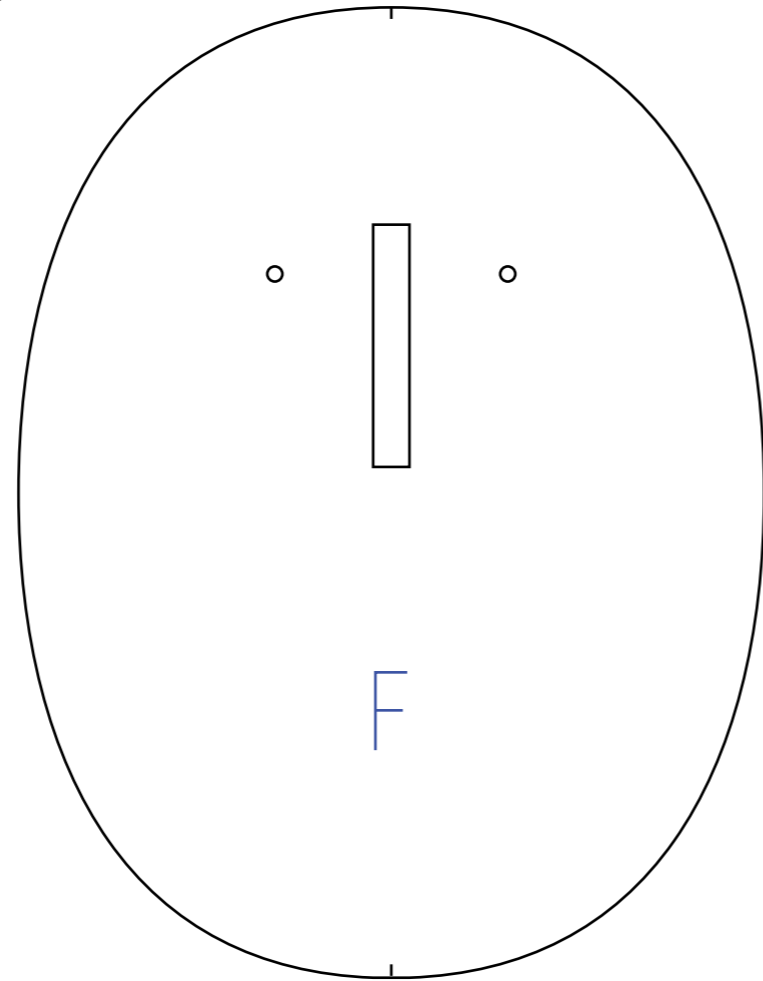
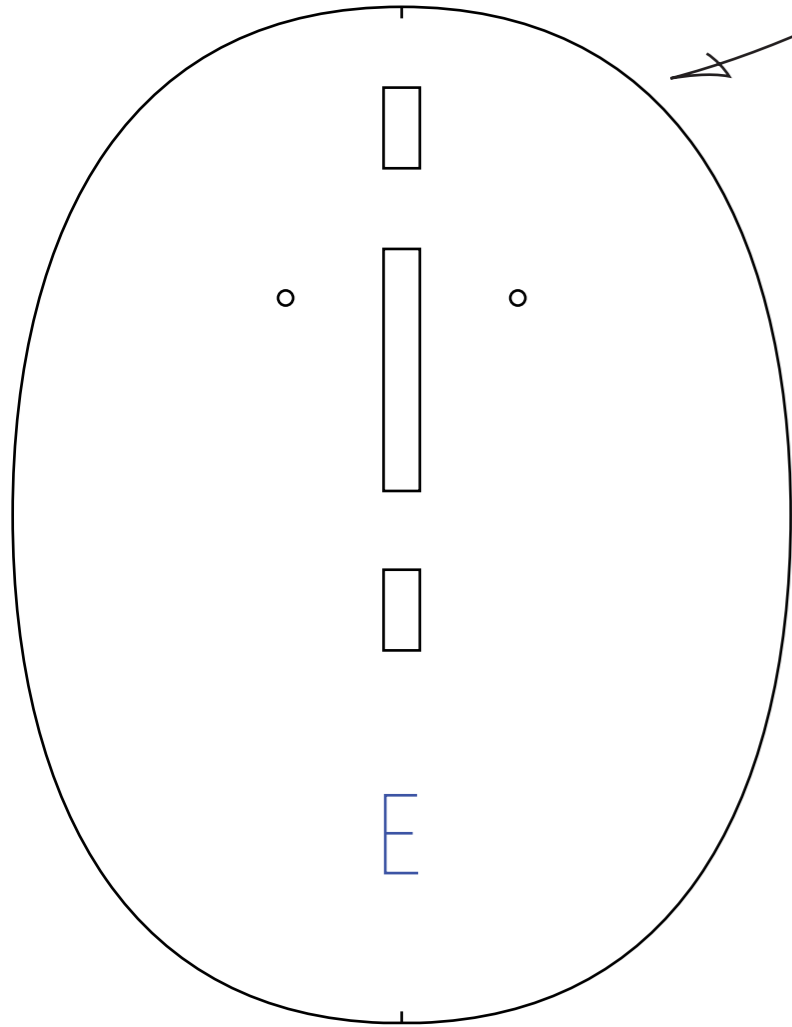
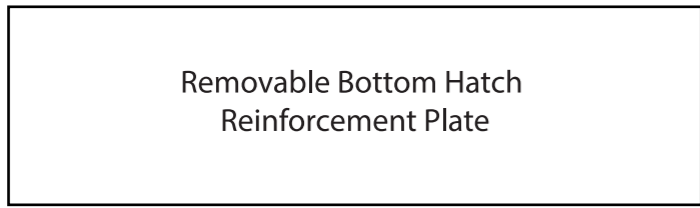
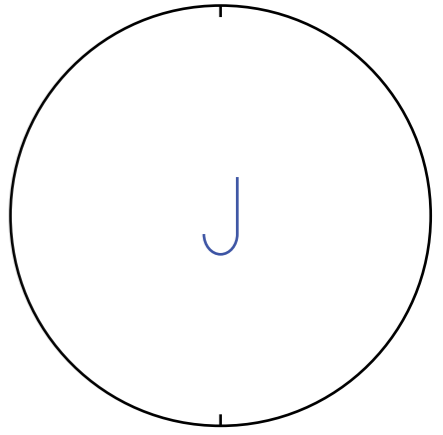
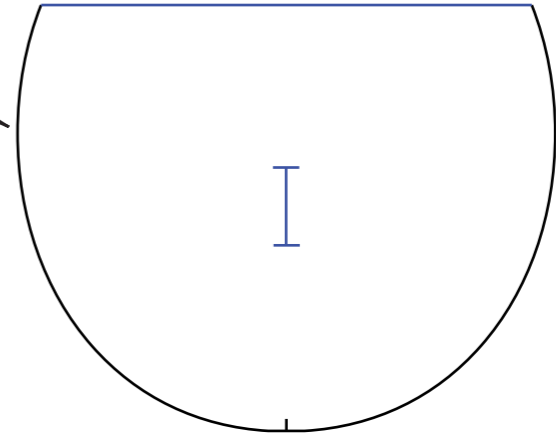


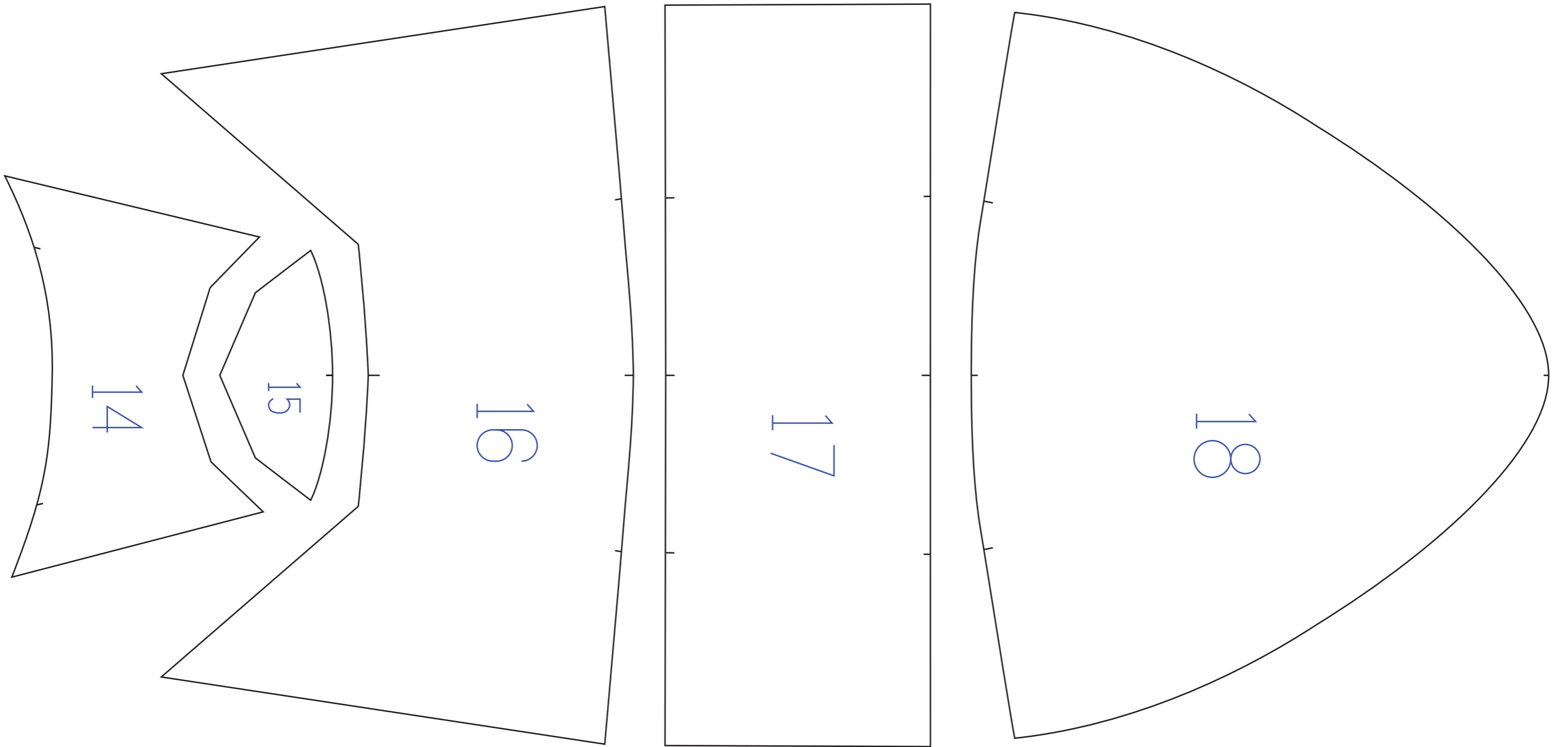


Do not glue these pieces, A, B, and C to the box frame because these are nosepieces that slide off the front of the plane so you have battery access.

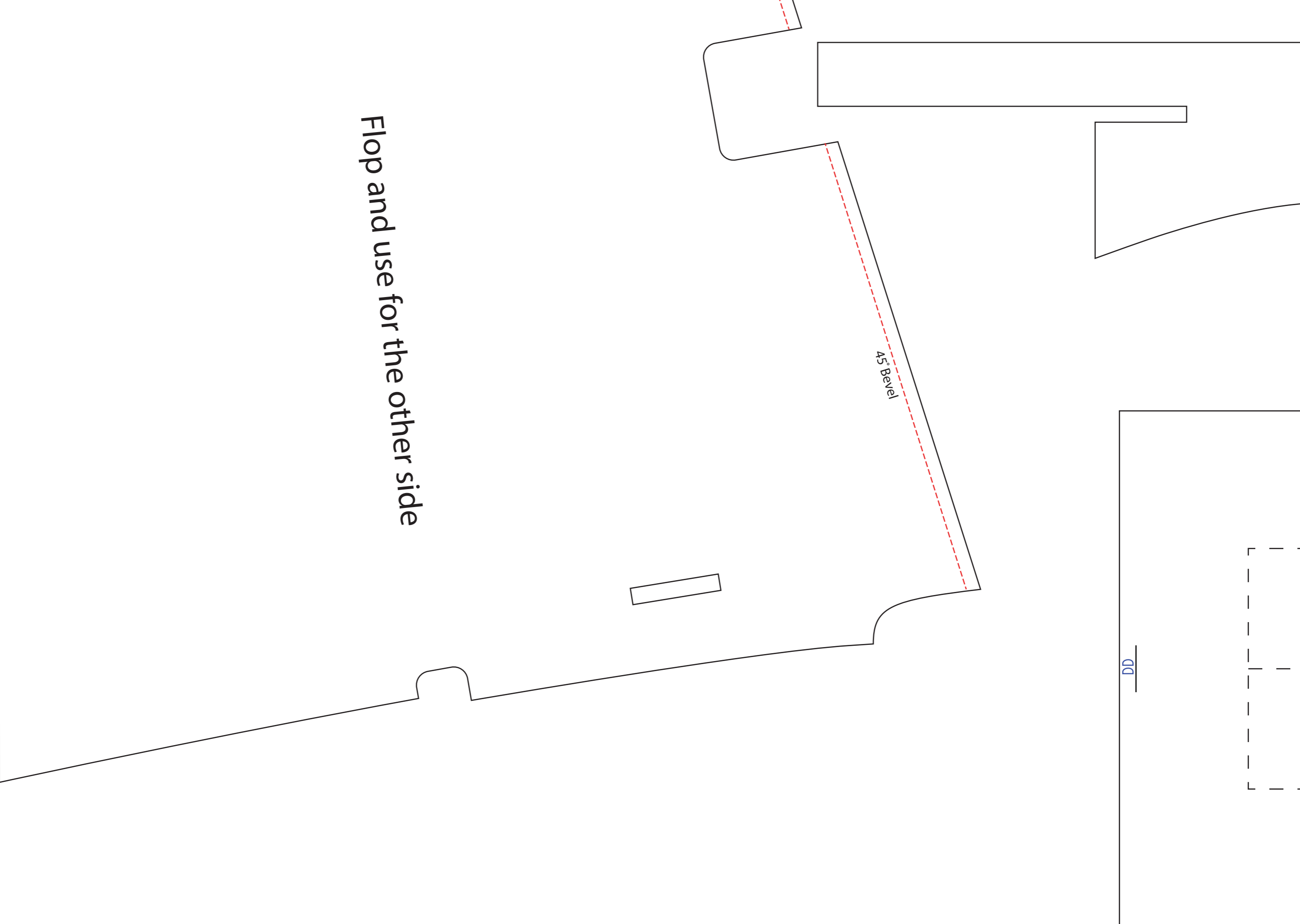


You need 2 of these.





Copyright ©2021 13thSquadron. All Rights Reserved.
Commercial use of our plans are prohibited.



Flop and use for the other side

45° Bevel

DD

Glue Servo for elevator here.
Glue upside down
so you have access
from hatch below.

Rudder piece gets inserted
and glued into this spot.

Removable Bottom Hatch
Reinforcement Plate
Placement

This piece can get removed for either a flat bottom or if you make it so you can drop an Ohka Bomb. So do not glue this piece to the body.

Bomb Bay

Ohka Bomb Bay

6B

Removable Bottom Hatch
Reinforcement Plate
Placement

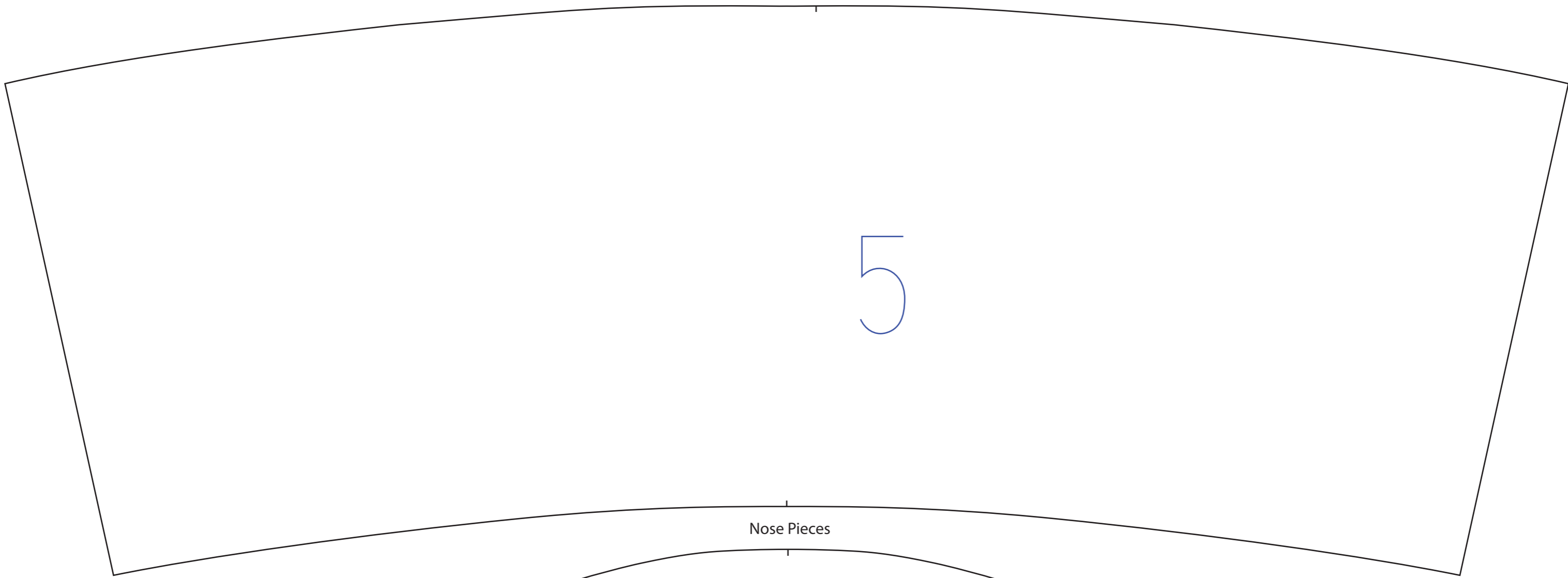
E

E

EE

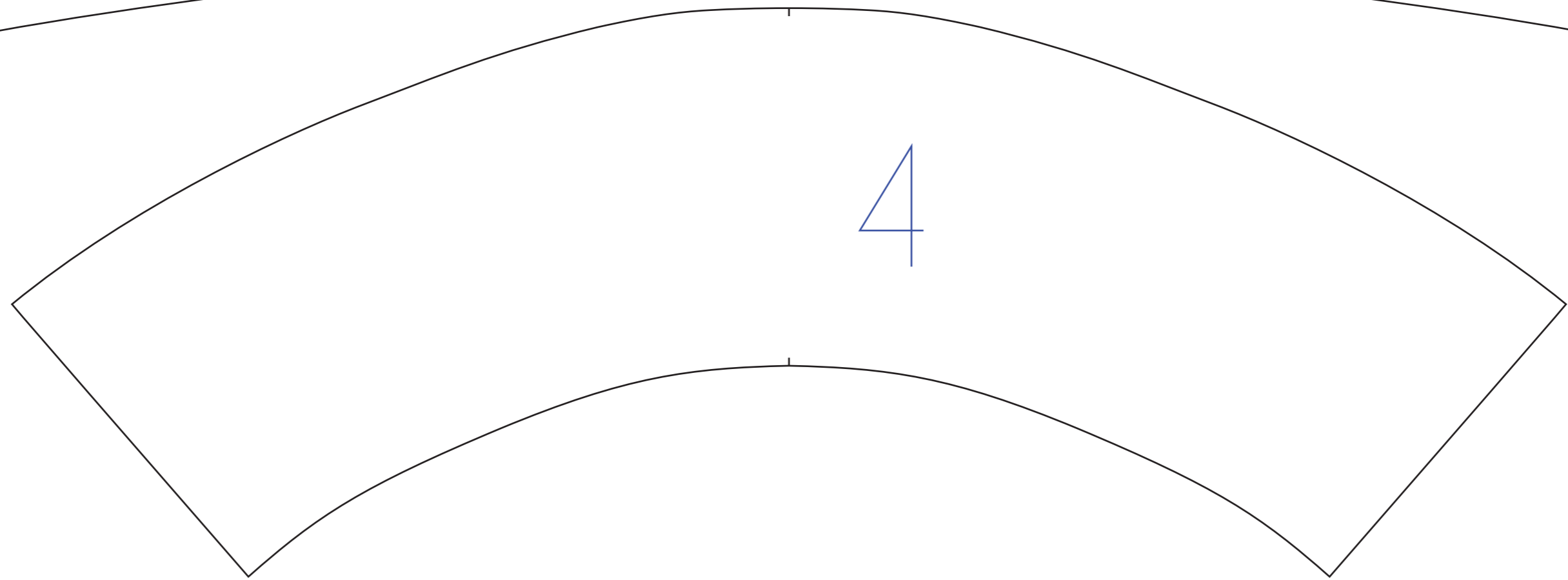
6A

You need 2 of these pieces
glued to each side here.

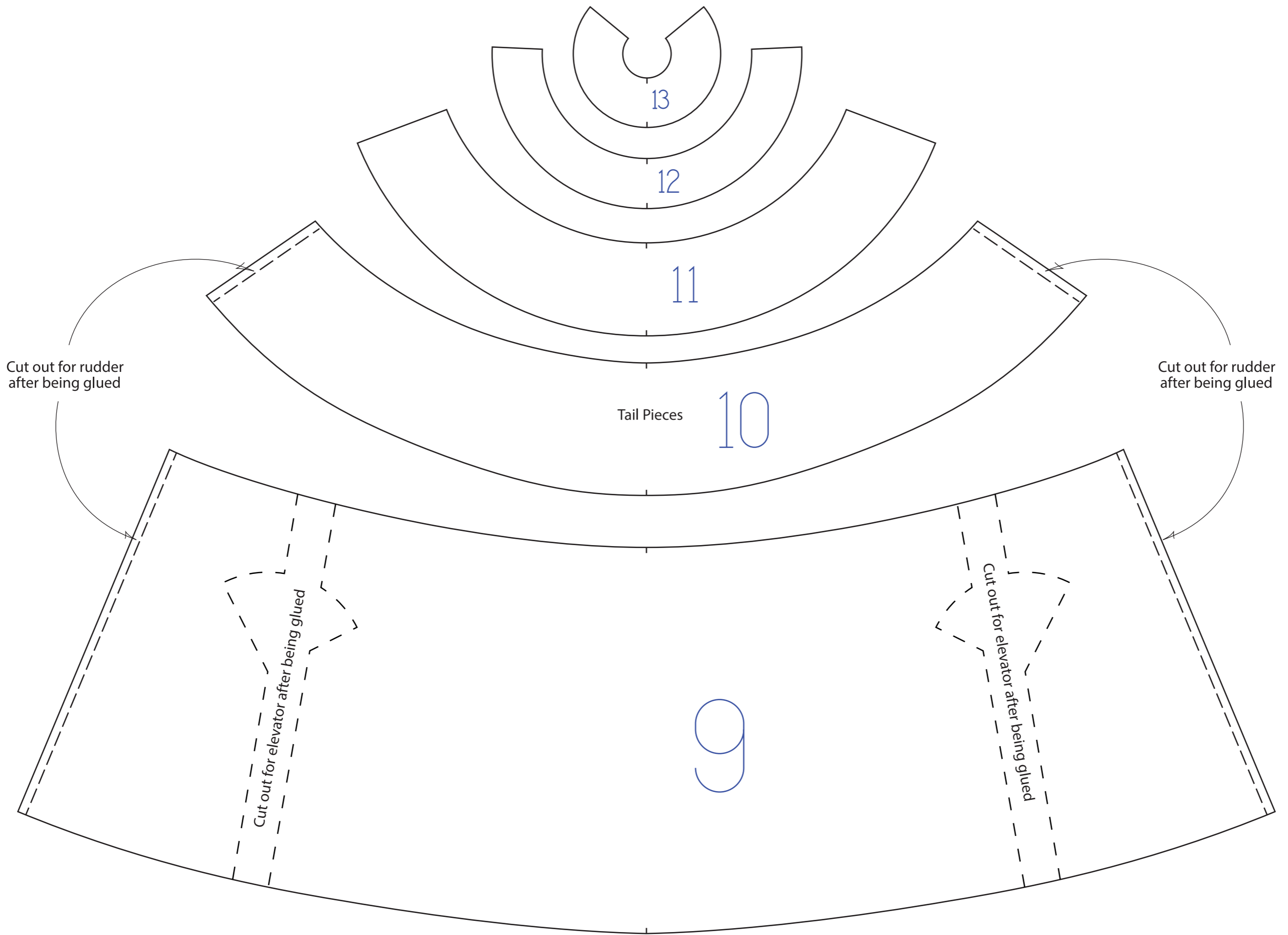


5

Nose Pieces



4



13

12

11

Tail Pieces

10

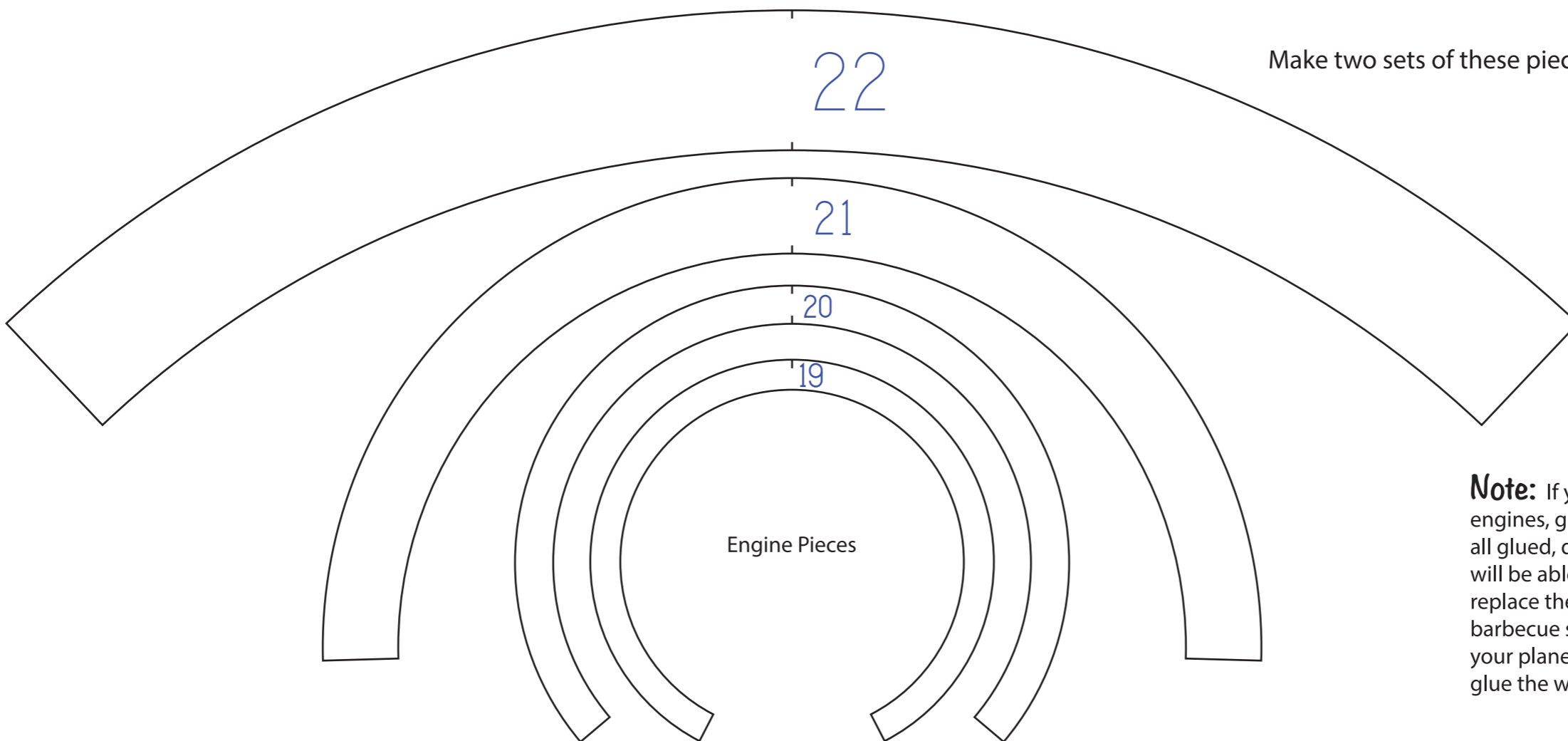
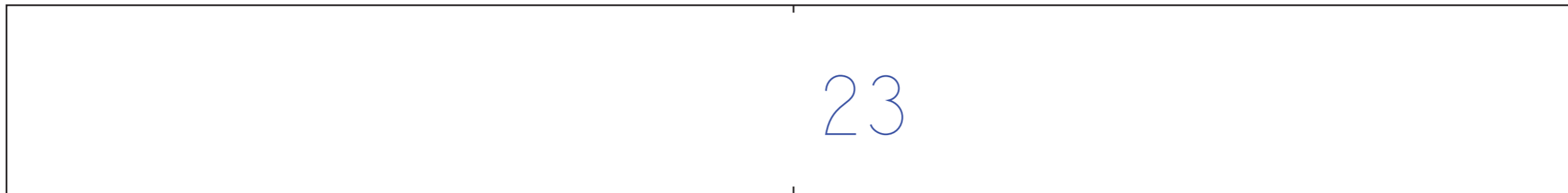
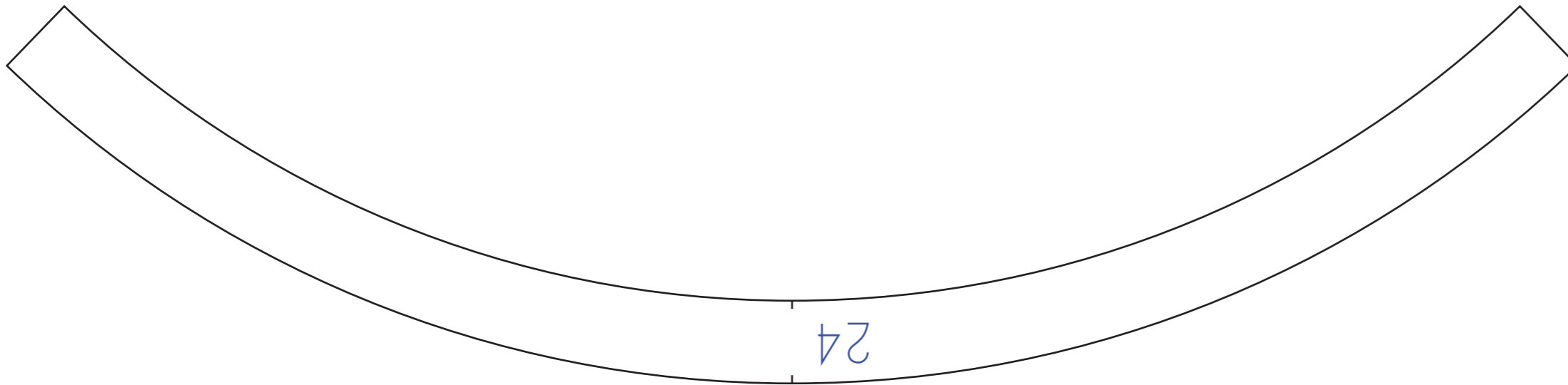
9

Cut out for rudder
after being glued

Cut out for rudder
after being glued

Cut out for elevator
after being glued

Cut out for elevator
after being glued



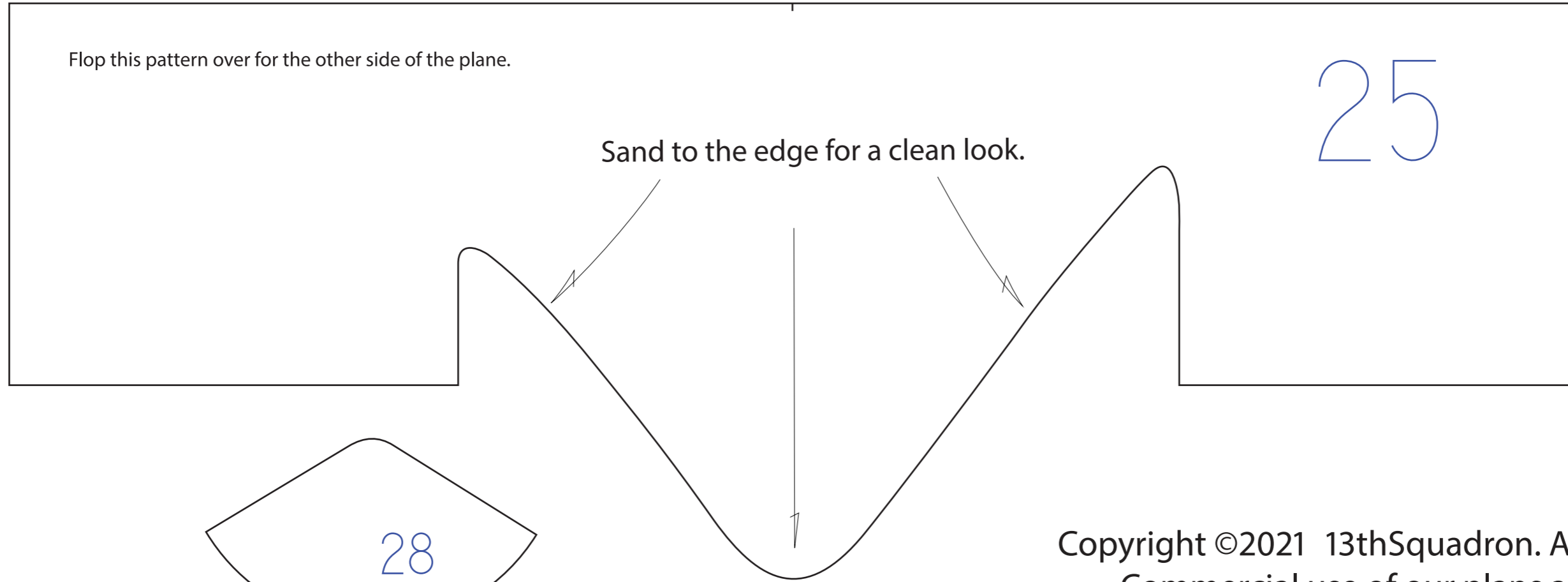
Make two sets of these pieces, one for each nacelle.

Note: If you are making your airplane to have swappable engines, glue all of these pieces together. Once they are all glued, do not glue them to the rest of the Nacelle. You will be able to take these cowlings off of each engine to replace the motors. These pieces will be attached by poking barbecue skewers through each side. If you aren't making your plane to have swappable engines, then go ahead and glue the whole engine nacelle together.

Flop this pattern over for the other side of the plane.

25

Sand to the edge for a clean look.



Copyright ©2021 13thSquadron. All Rights Reserved.
Commercial use of our plans are prohibited.

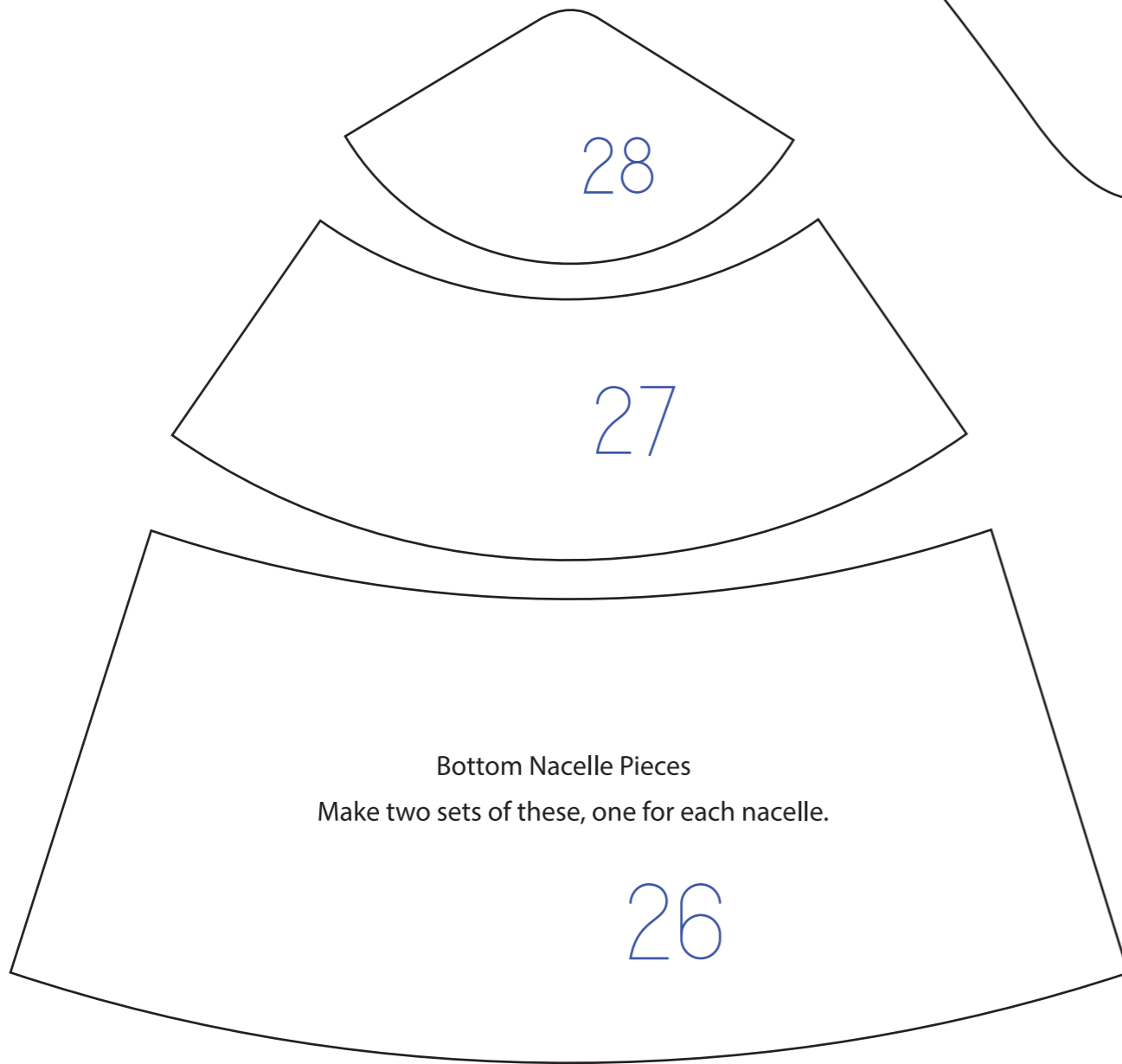
28

27

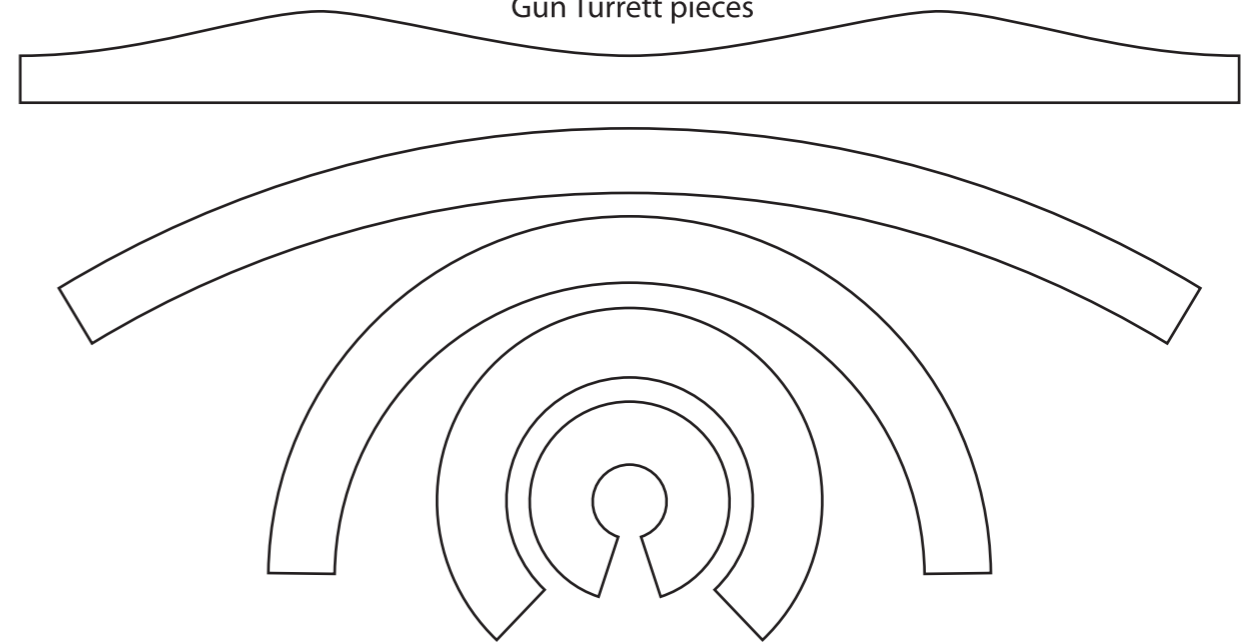
Bottom Nacelle Pieces

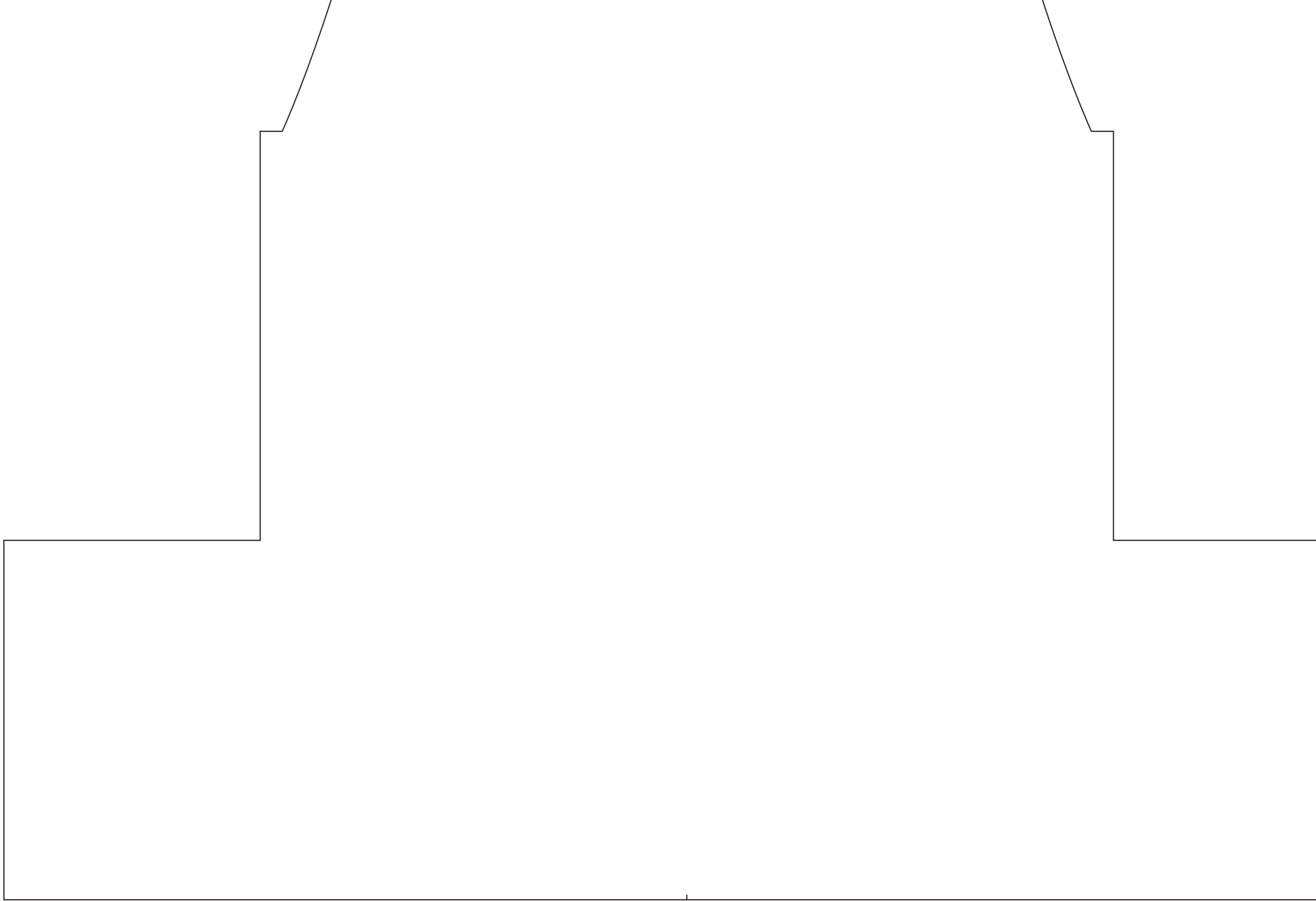
Make two sets of these, one for each nacelle.

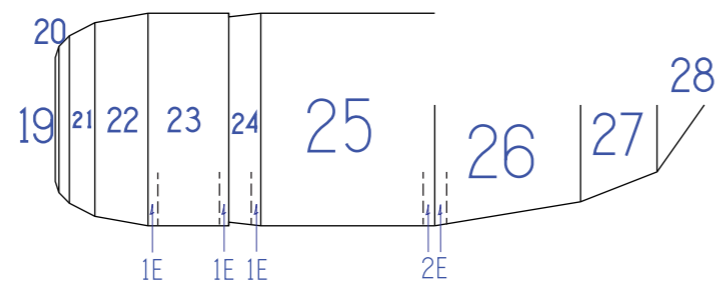
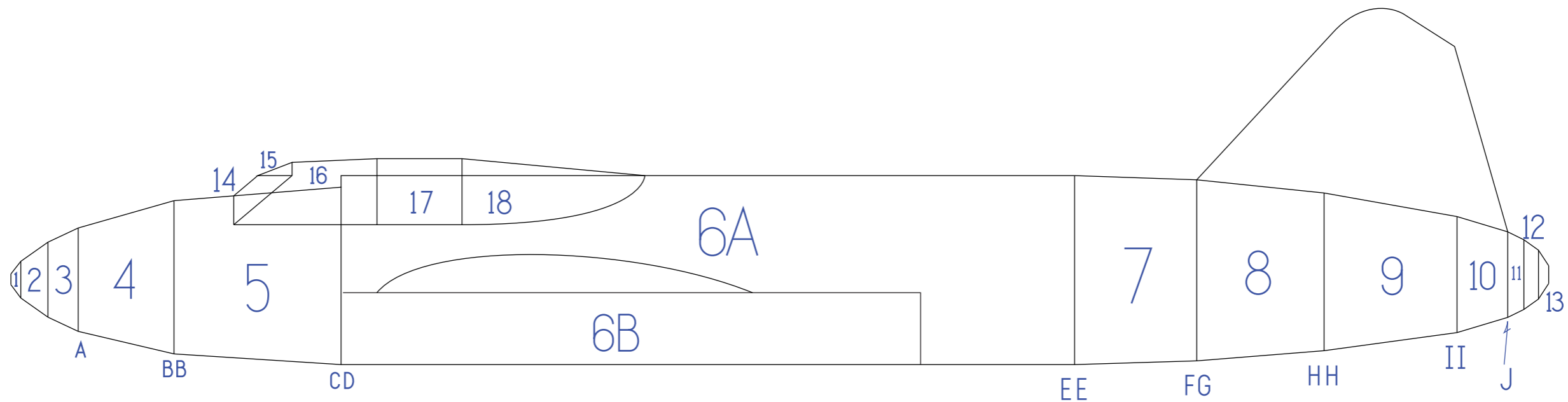
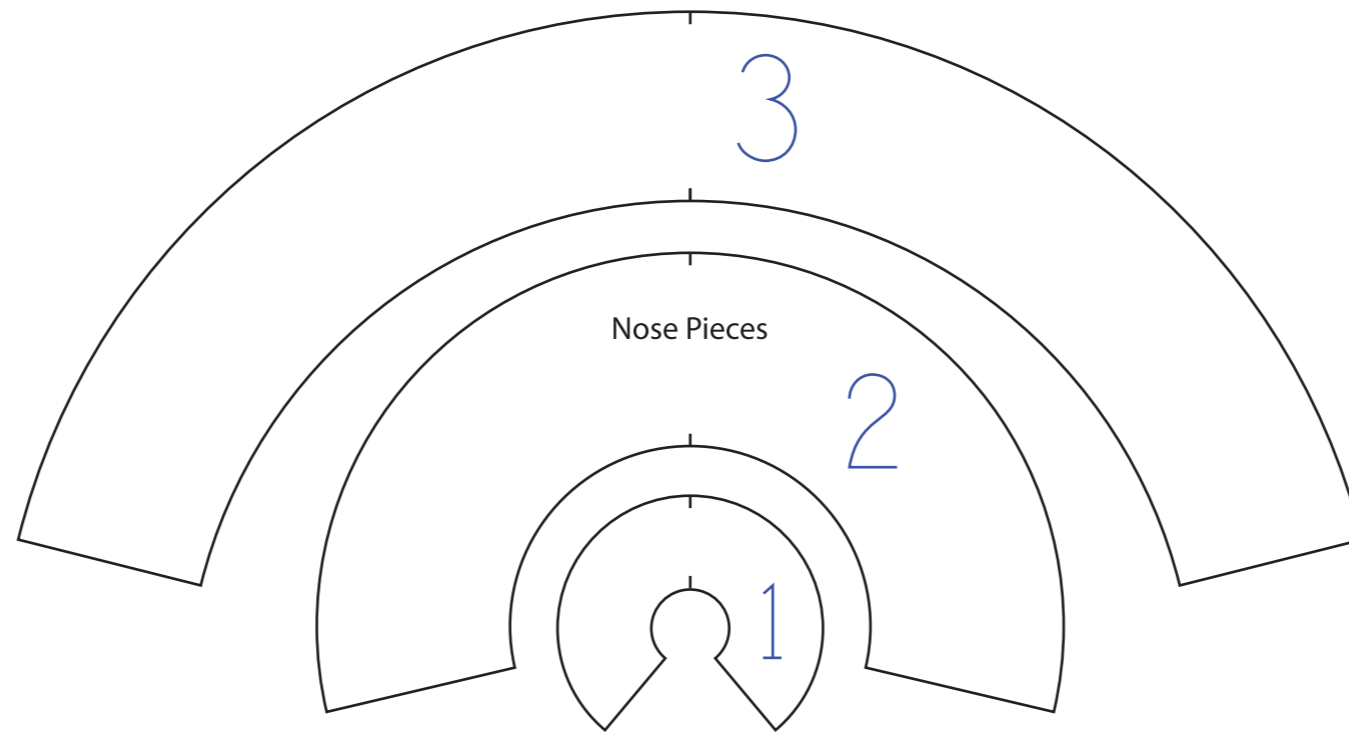
26



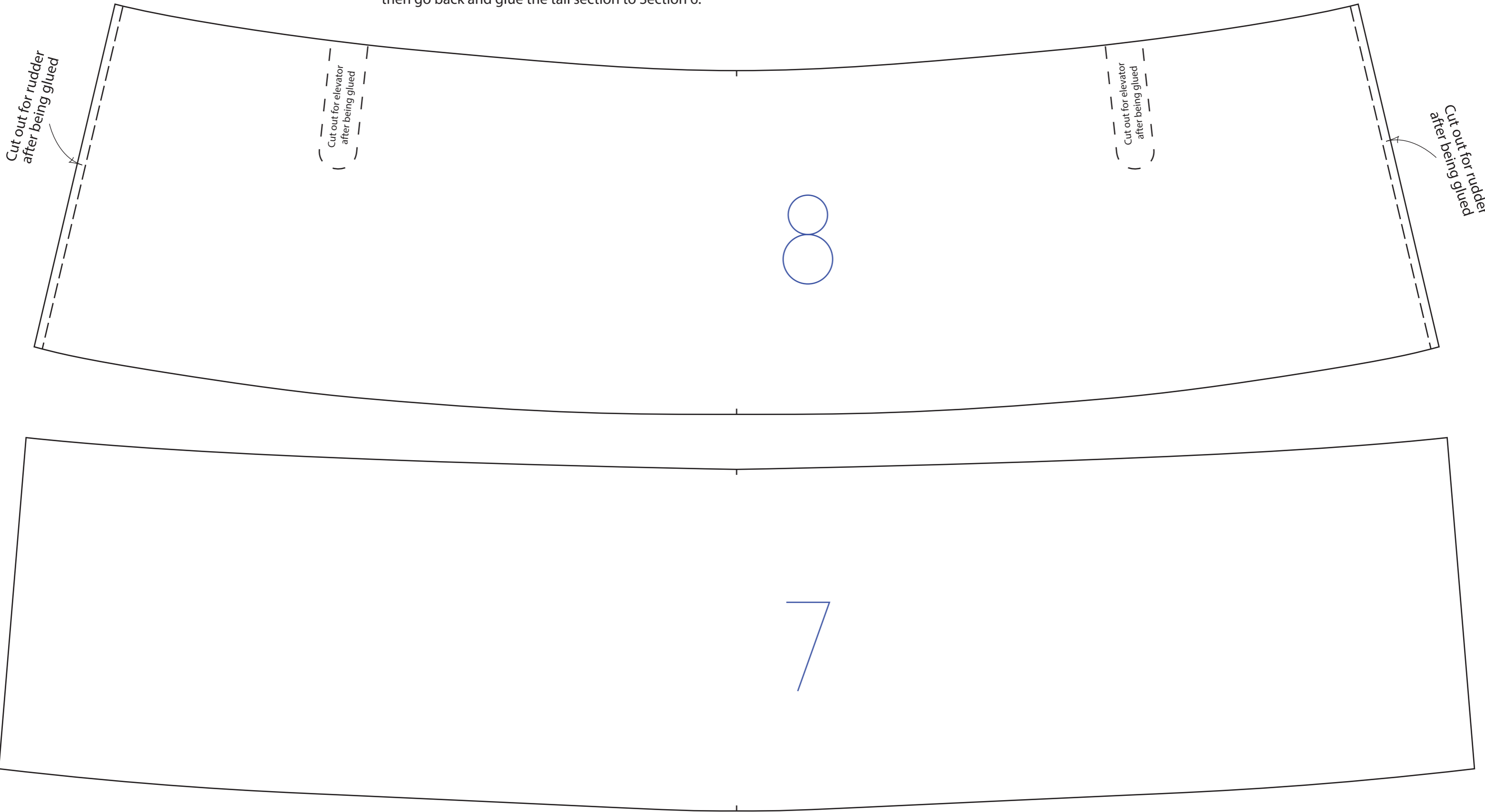
Gun Turrett pieces

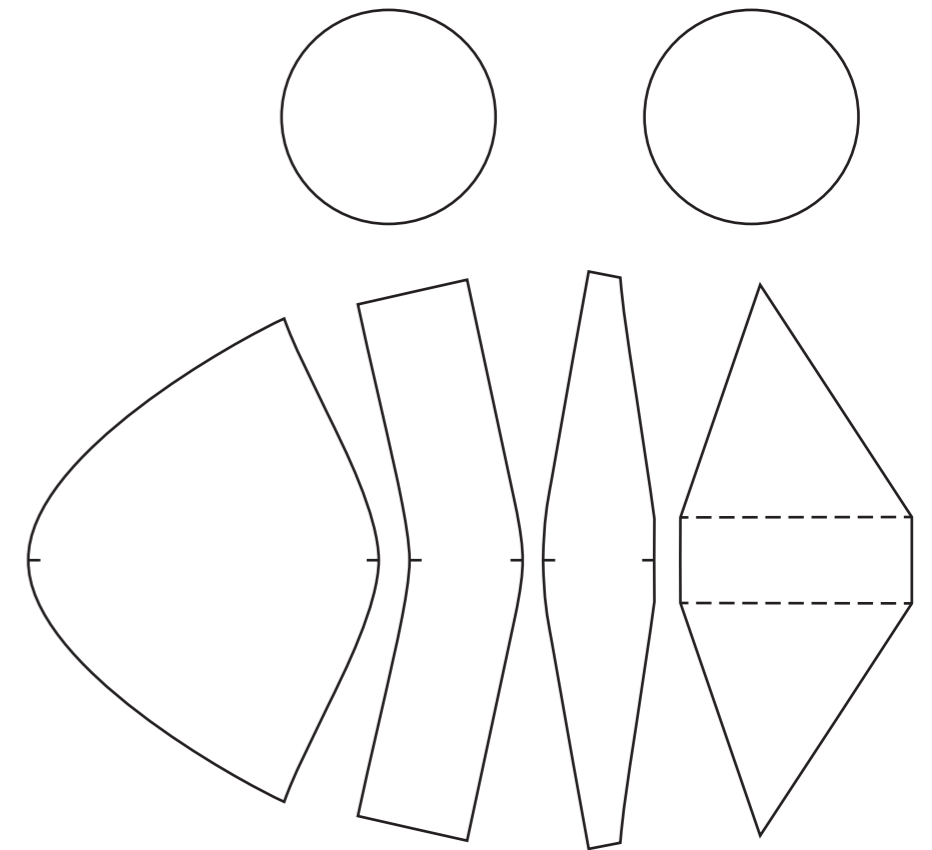
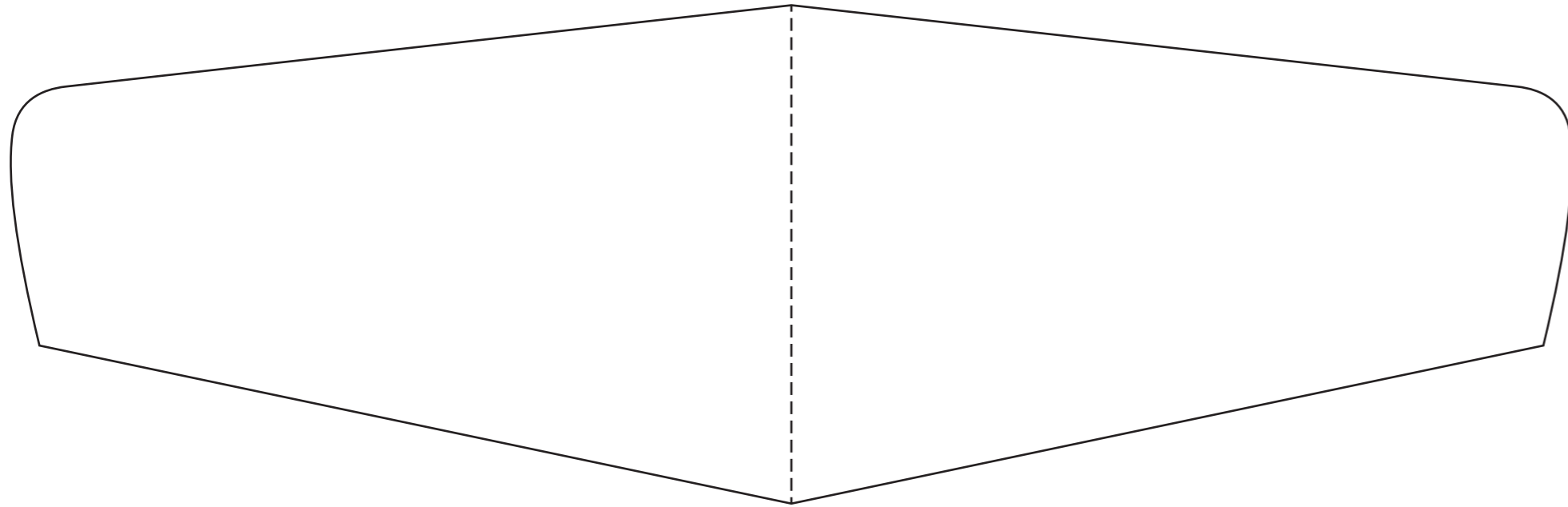
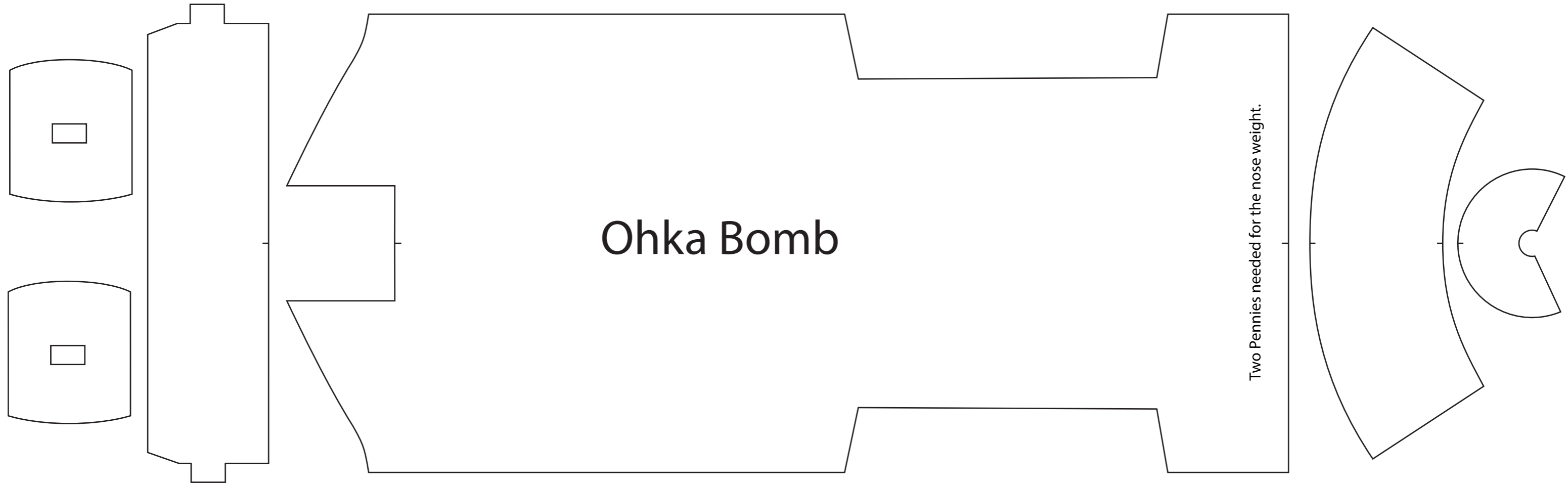


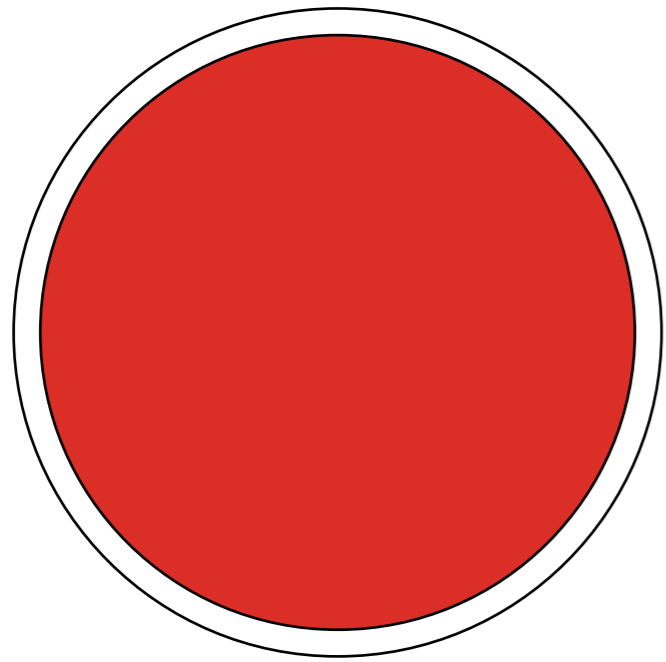




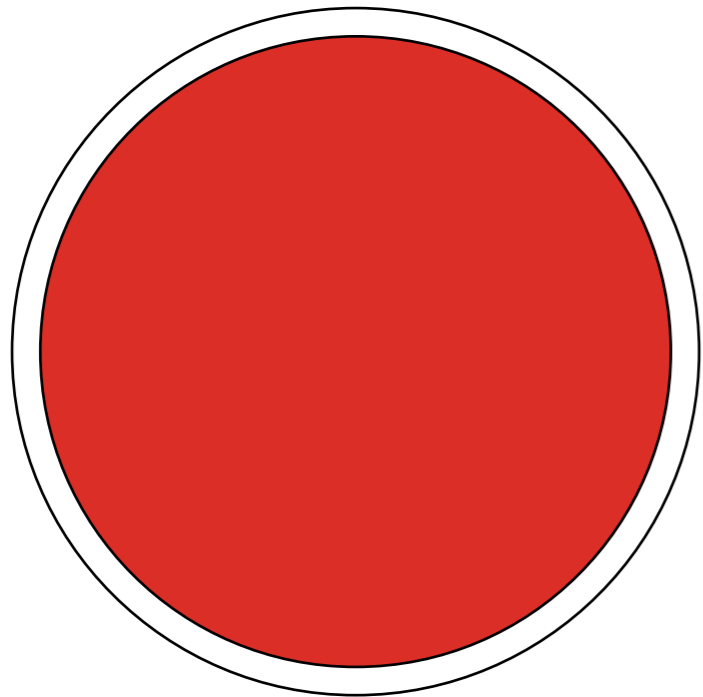
Make the tail section separately. Start from section 7 and go back to the tail end. Once you have finished making the tail section, then go back and glue the tail section to Section 6.





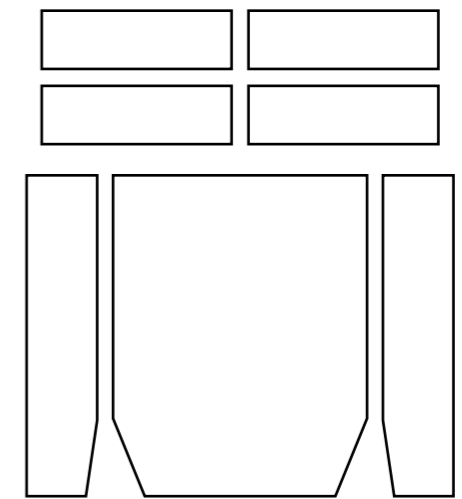


Wing Insignia



Fuselage Insignia

龍
13



Fuselage Window

