

S2

Aluminum Spar (1/16 x 1/2 x 42.5 in)

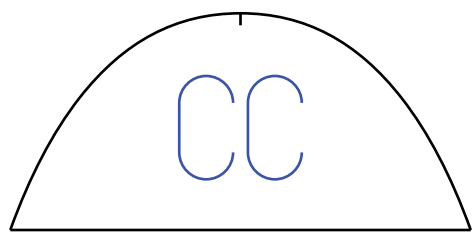
The order for the spars in order from front of the plane to the back goes:
Aluminum Spar, S1. then S2

20"

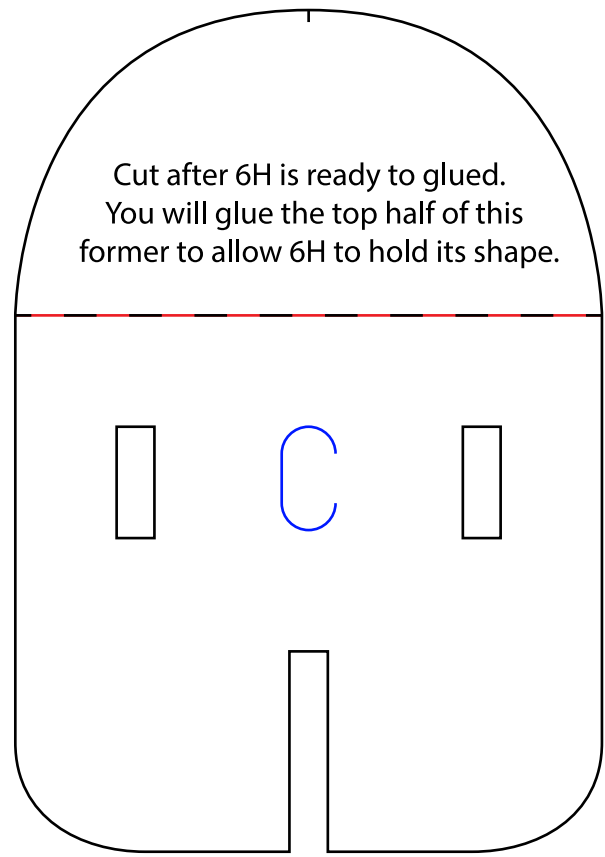


(Two of these)

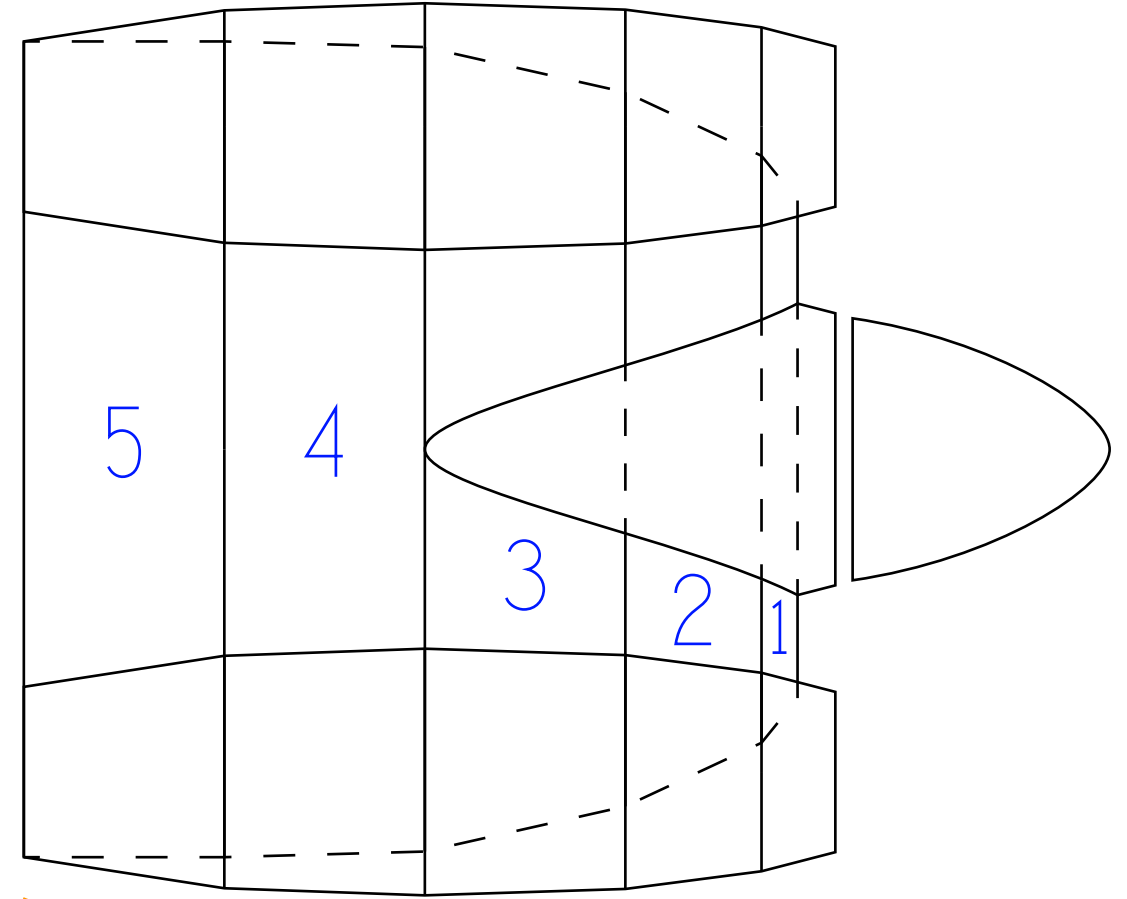
S1



Former for C5 piece to give the canopy it's shape.



Cut after 6H is ready to glued.
You will glue the top half of this former to allow 6H to hold its shape.



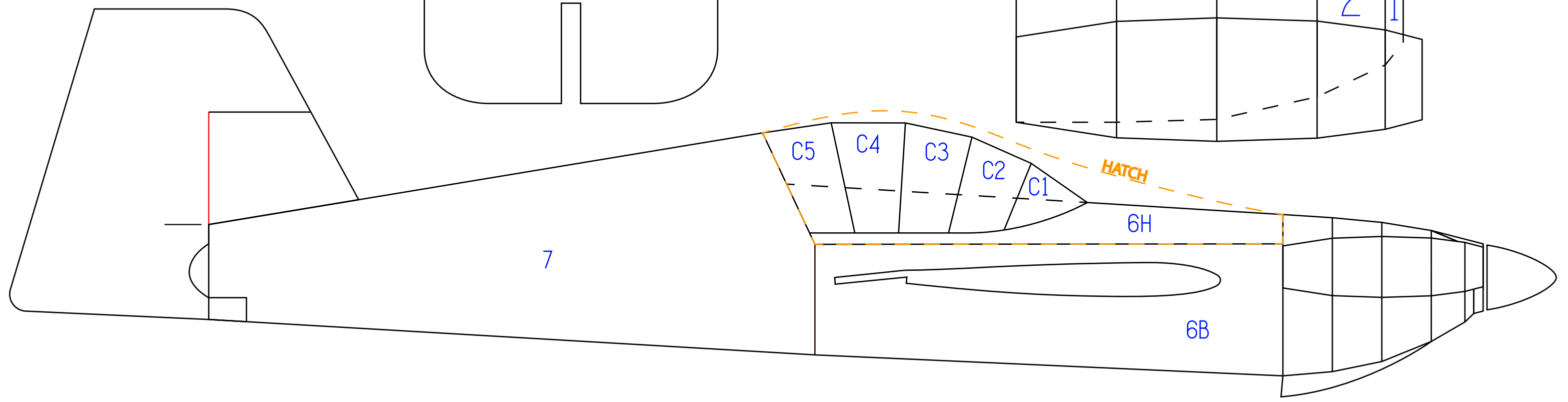
5

4

3

2

1



7

C5

C4

C3

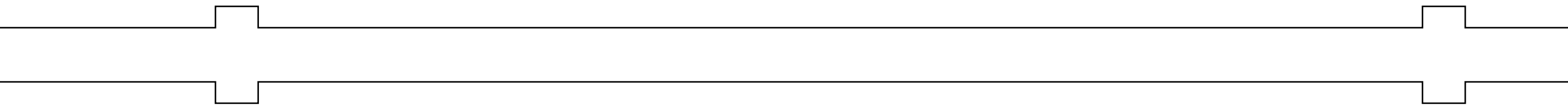
C2

C1

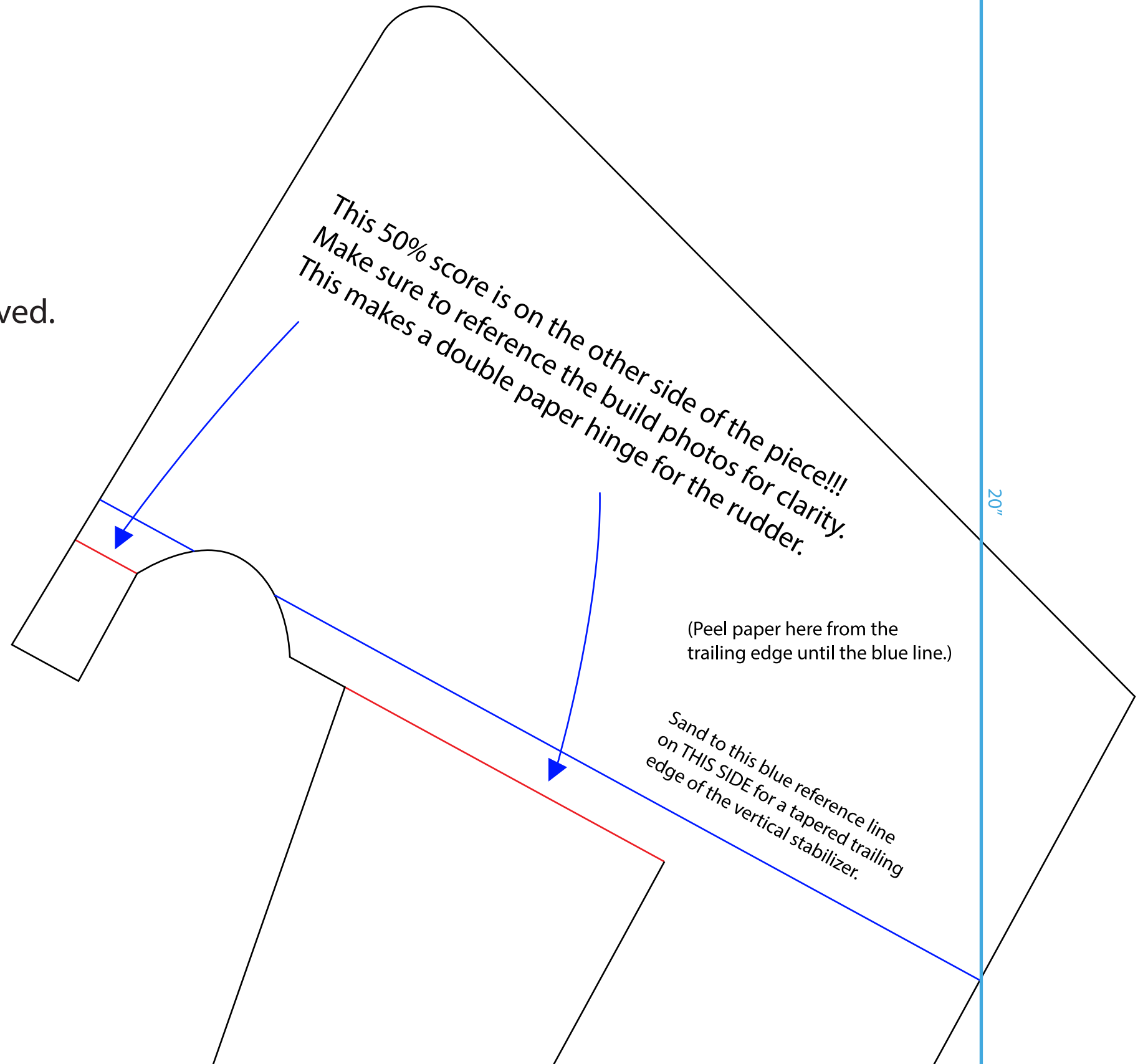
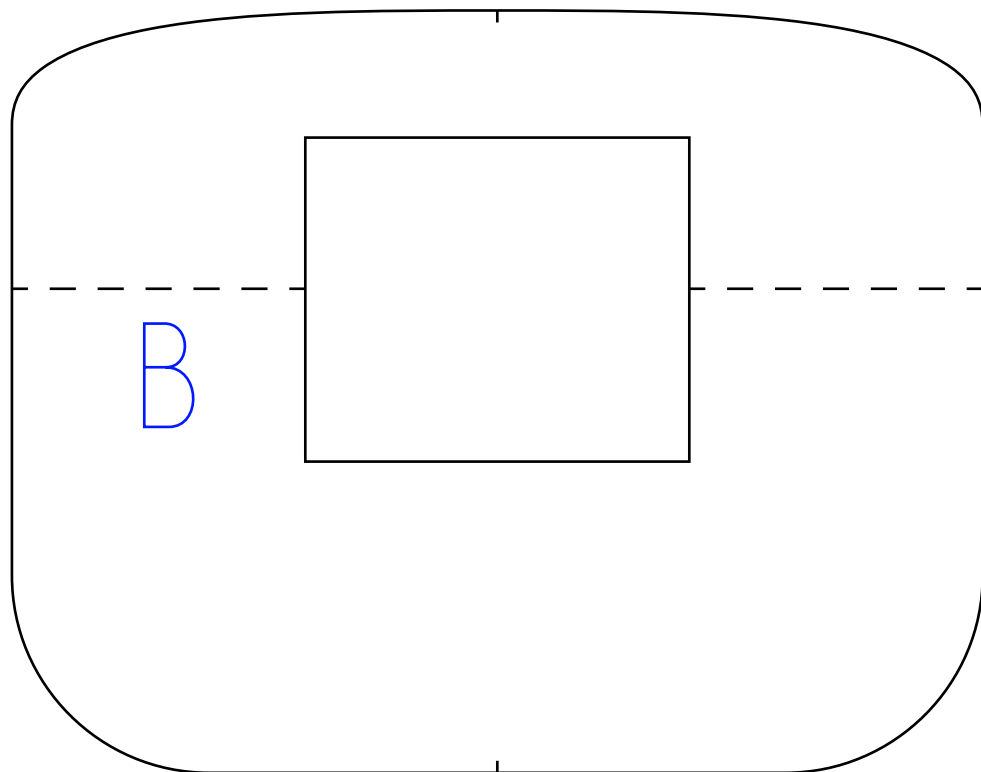
HATCH

6H

6B



Copyright ©2023 13thSquadron. All Rights Reserved.
Commercial use of our plans are prohibited.





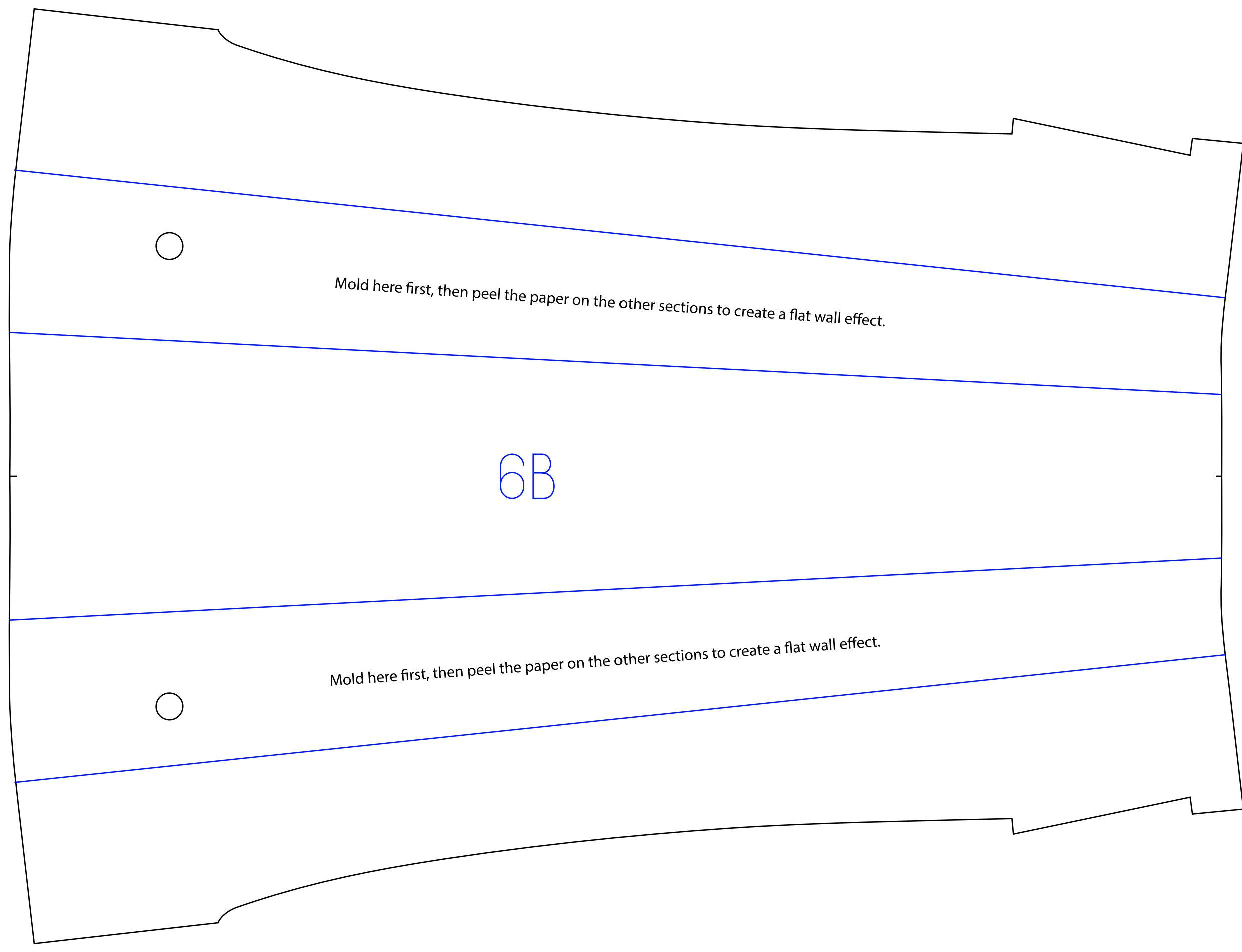
Peel all the paper off here.

20"



This blue/red reference line is for you to bevel to to allow more throw for the aileron and to make sure the bottom trailing edge lines up with. This makes sure that your wing is symmetrical and even on both sides.



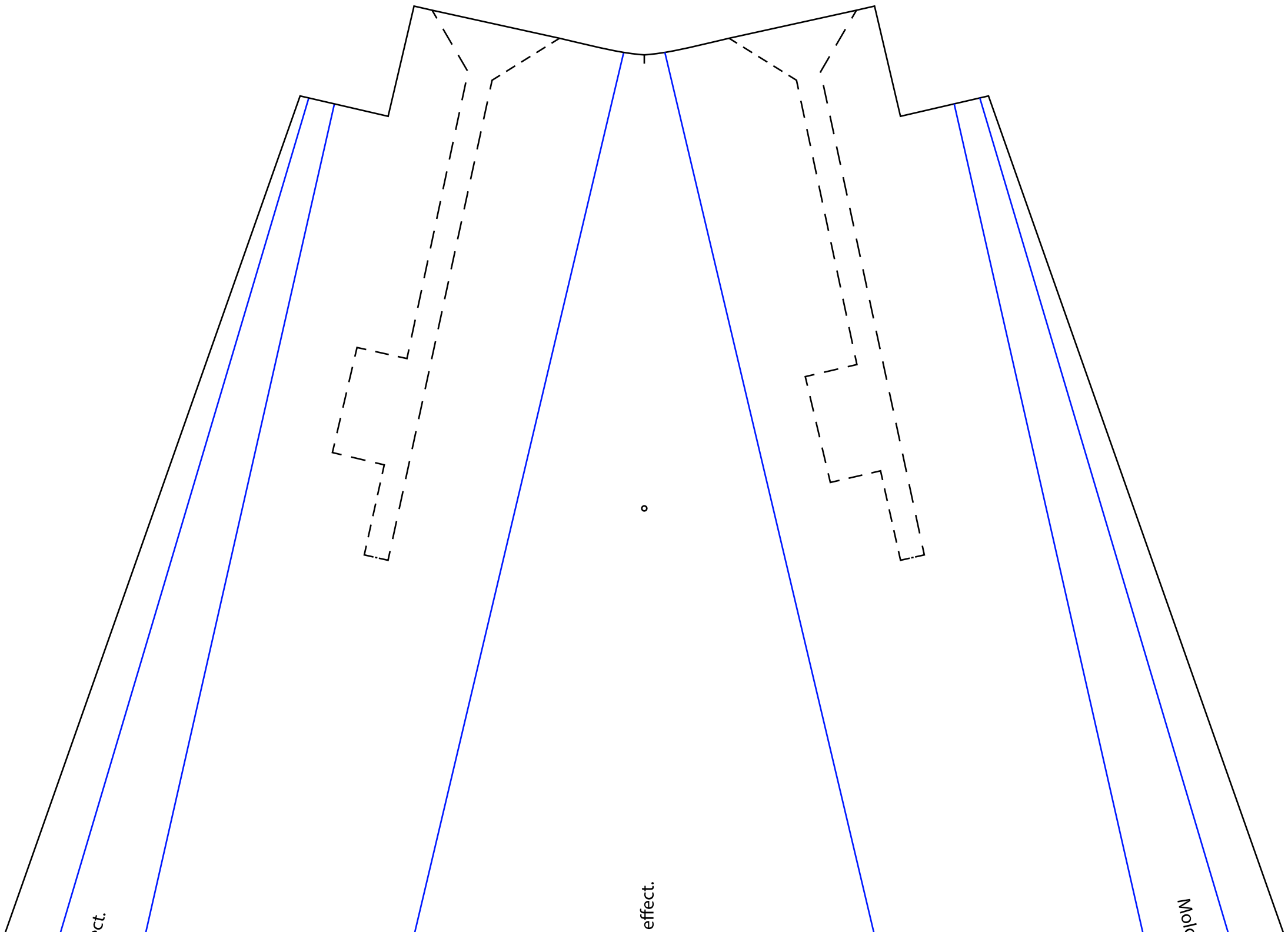


Mold here first, then peel the paper on the other sections to create a flat wall effect.

6B



Mold here first, then peel the paper on the other sections to create a flat wall effect.

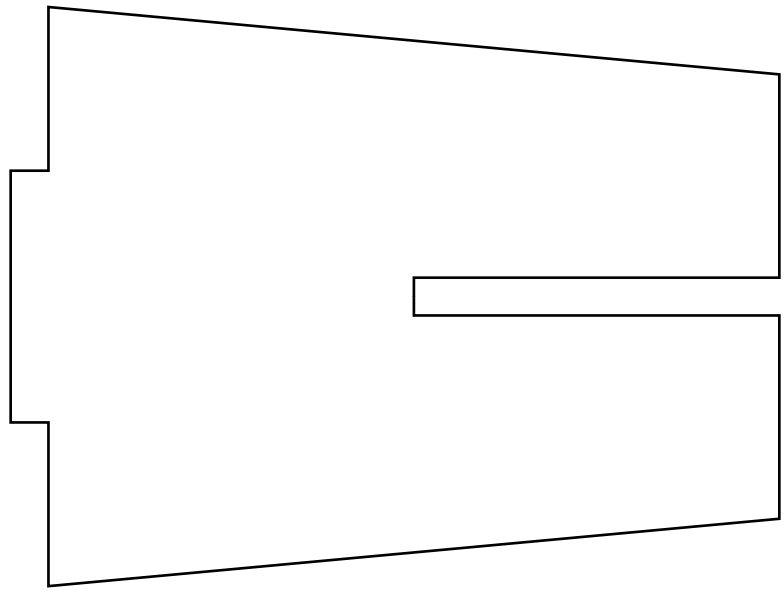


ct.

effect.

Molk

20"

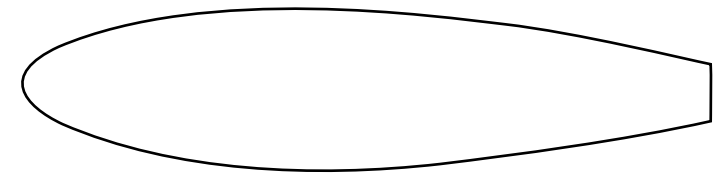


C

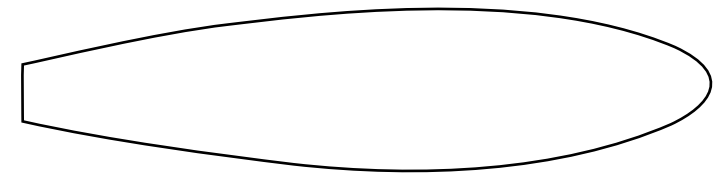


Landing Gear Mount Location

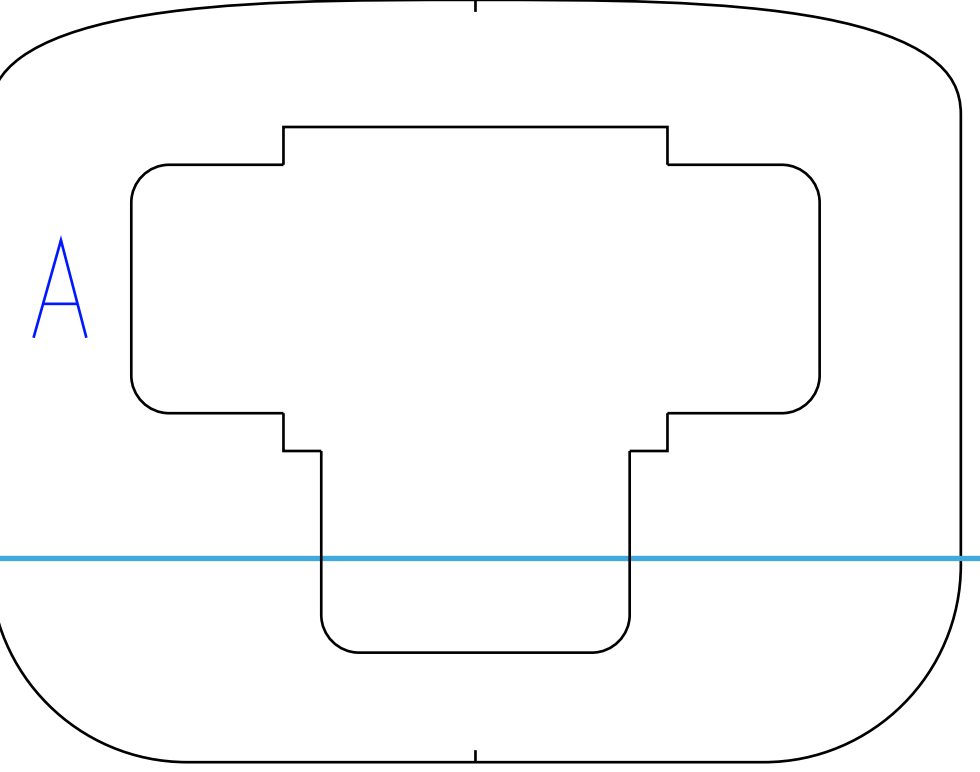
C



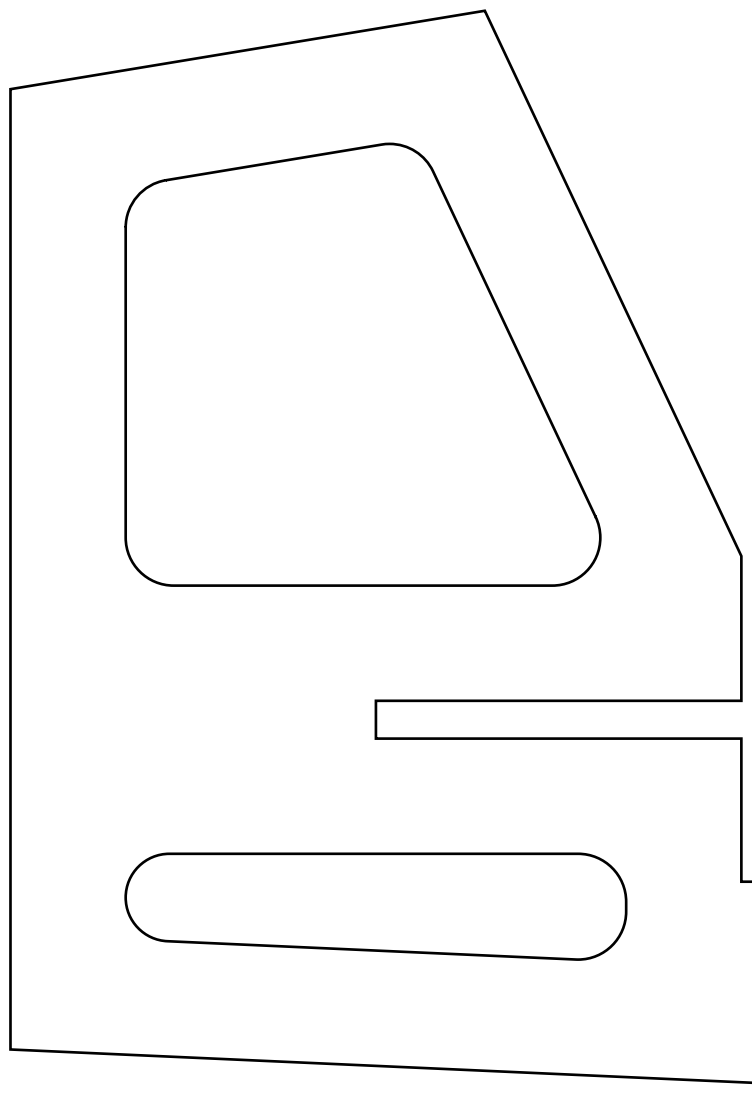
Wing Endplates (Posterboard)



20"



A



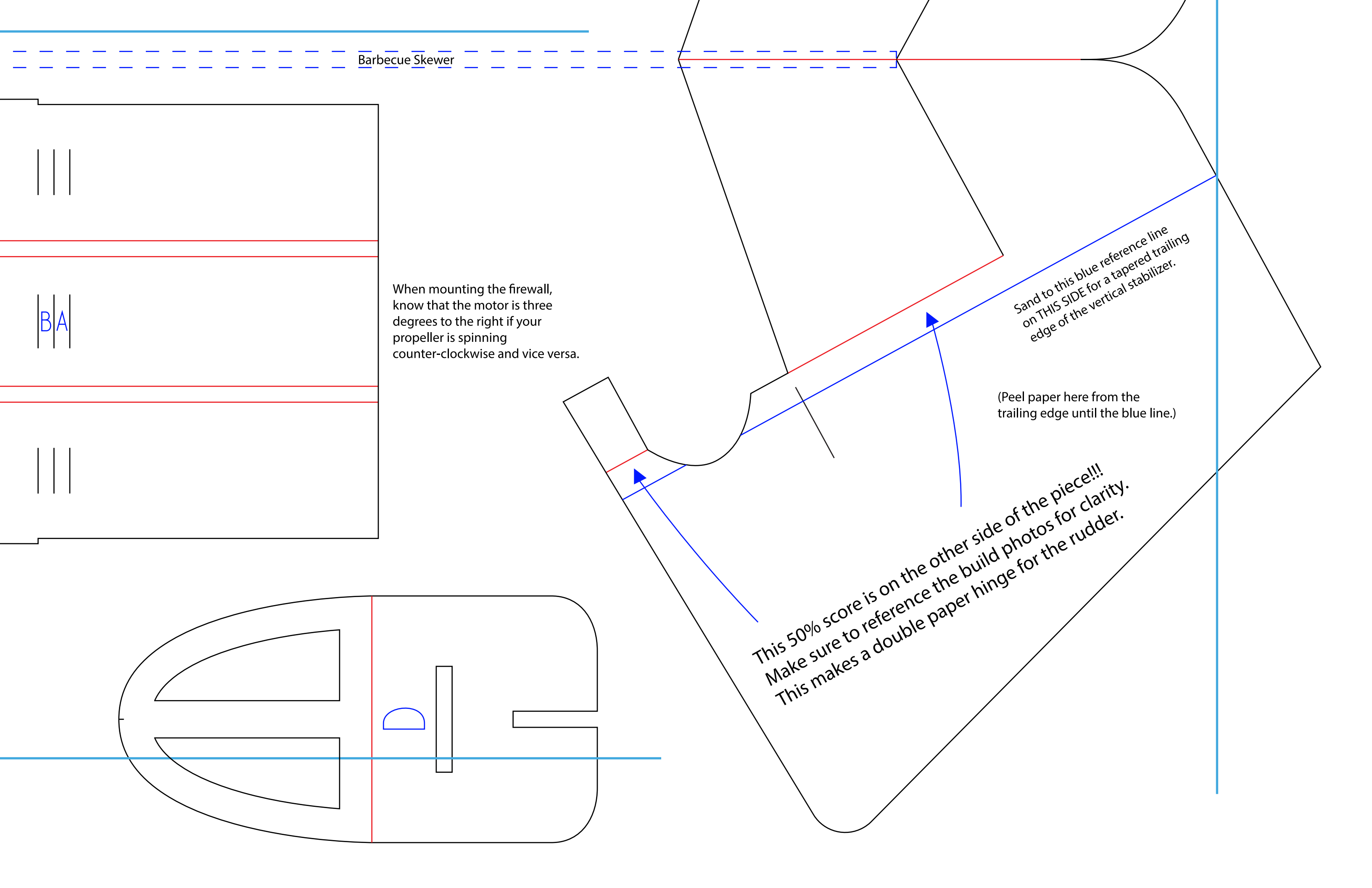
Barbecue Skewer

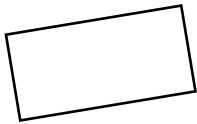
When mounting the firewall, know that the motor is three degrees to the right if your propeller is spinning counter-clockwise and vice versa.

Sand to this blue reference line on THIS SIDE for a tapered trailing edge of the vertical stabilizer.

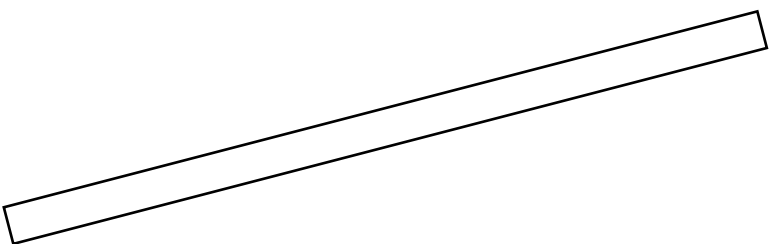
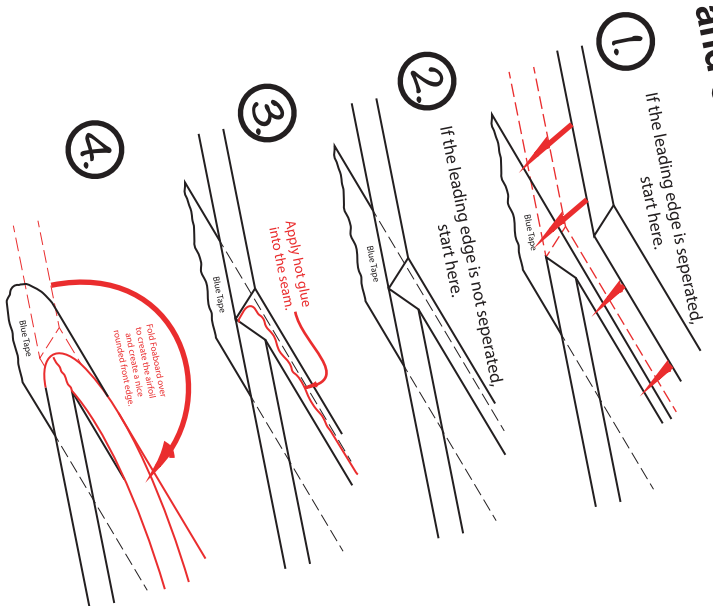
(Peel paper here from the trailing edge until the blue line.)

This 50% score is on the other side of the piece!!!
Make sure to reference the build photos for clarity.
This makes a double paper hinge for the rudder.



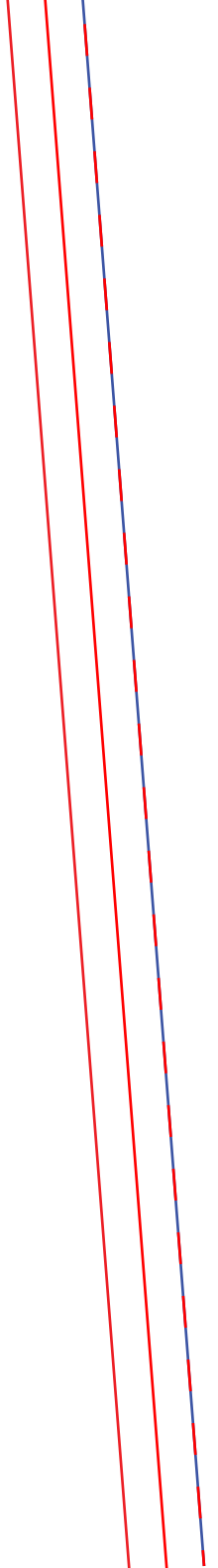


How to do the Leading Edges of the wings and elevator.

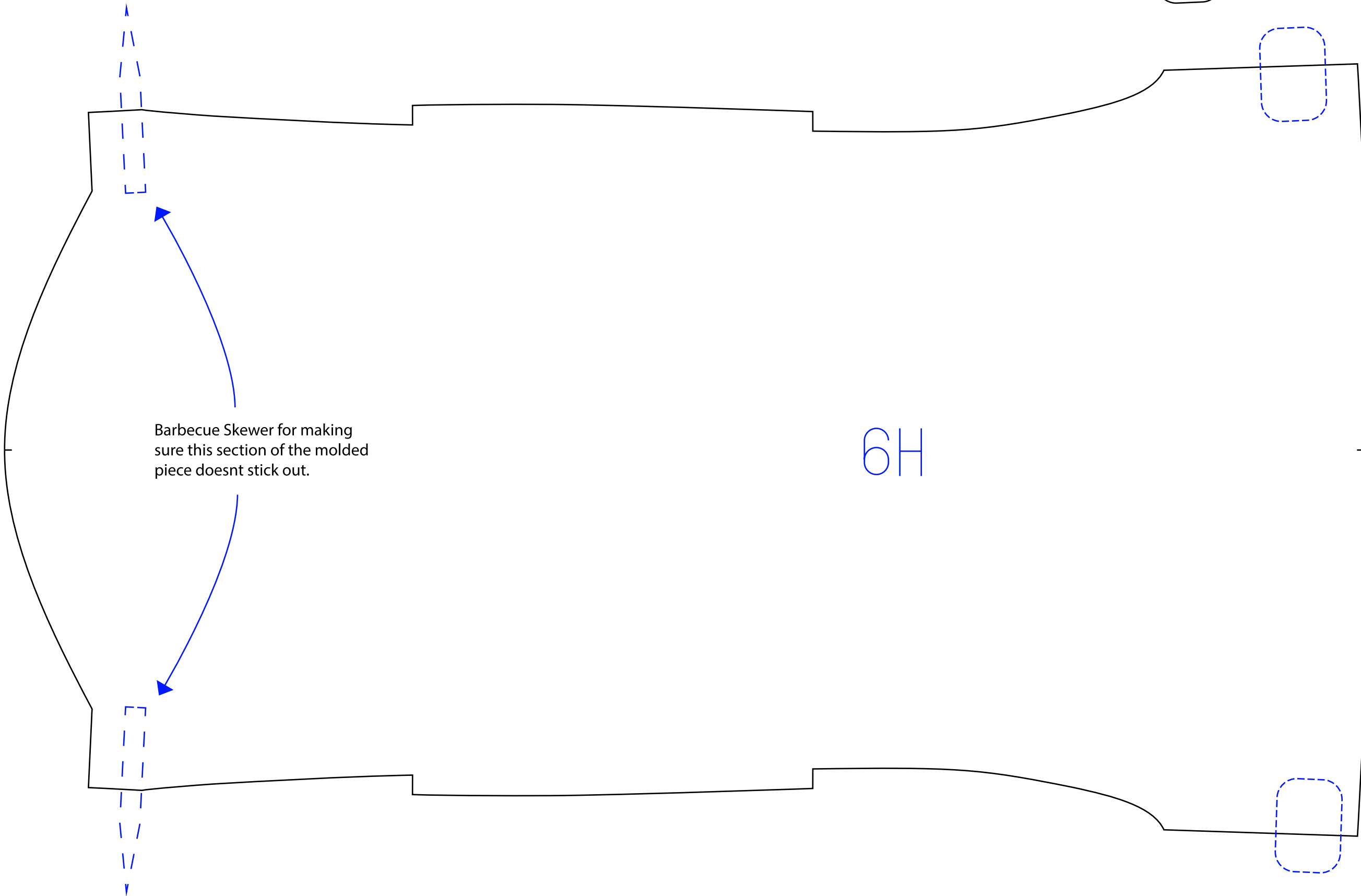
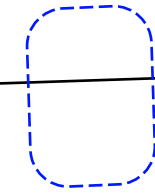
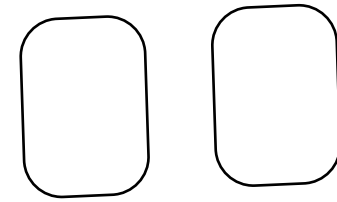


Peel paper up till this line.

(Leave paper here)



Copyright ©2023 13thSquadron. All Rights Reserved.
Commercial use of our plans are prohibited.



6H

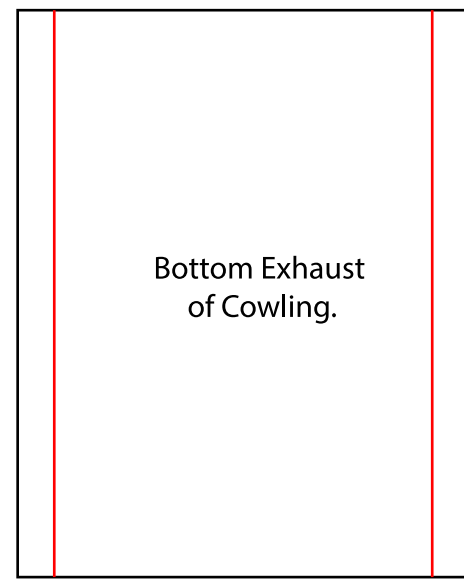
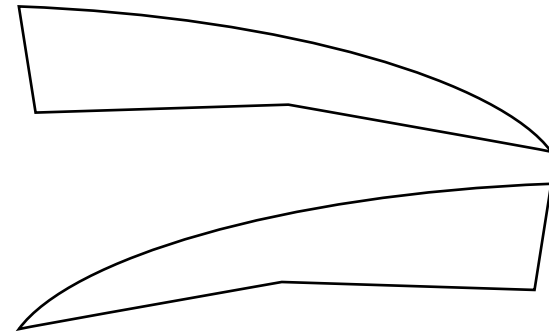
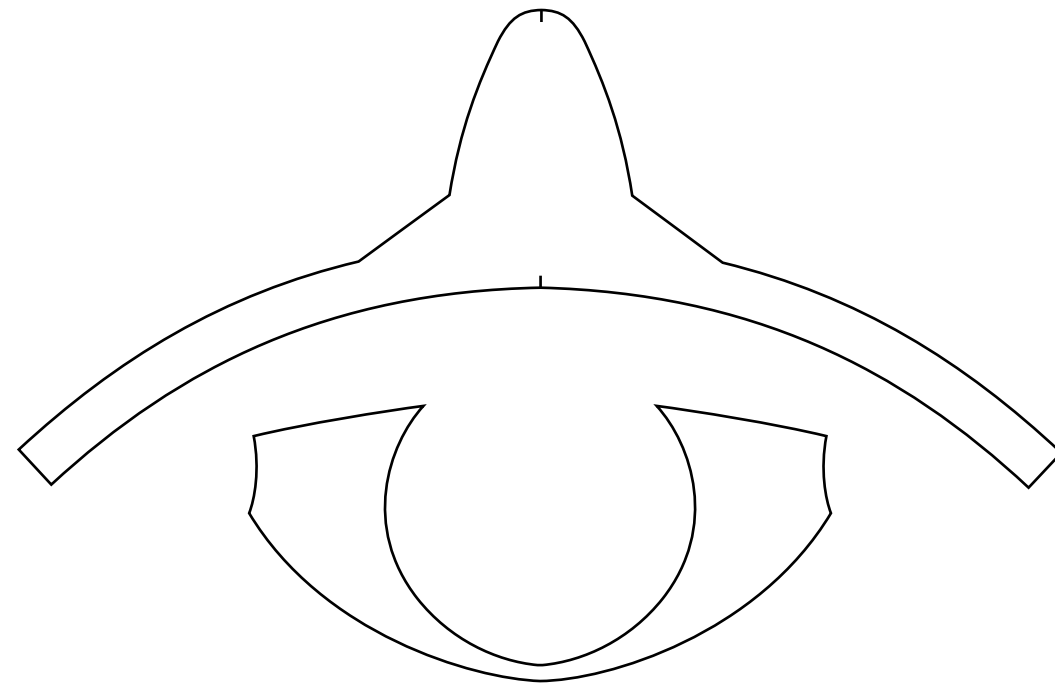
20"

Mold here first, then peel the paper on the other sections to create a flat wall effect.

Mold here first, then peel the paper on the other sections to create a flat wall

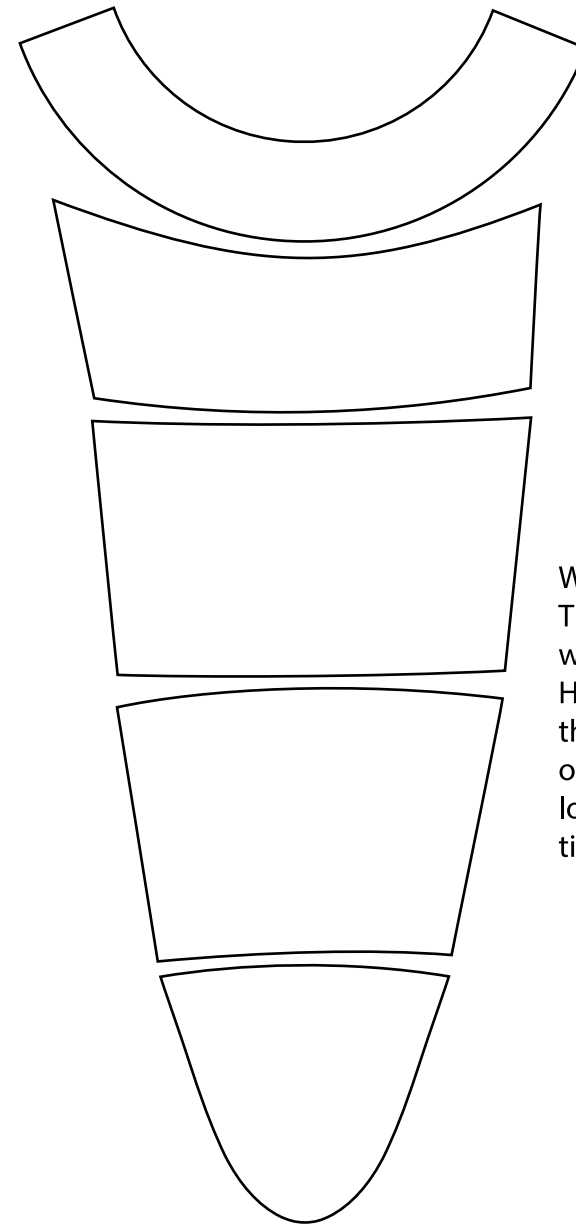
Mold here first, then peel the paper on the other sections to create a flat wall effect.

Copyright ©2023 13thSquadron. All Rights Reserved.
Commercial use of our plans are prohibited.

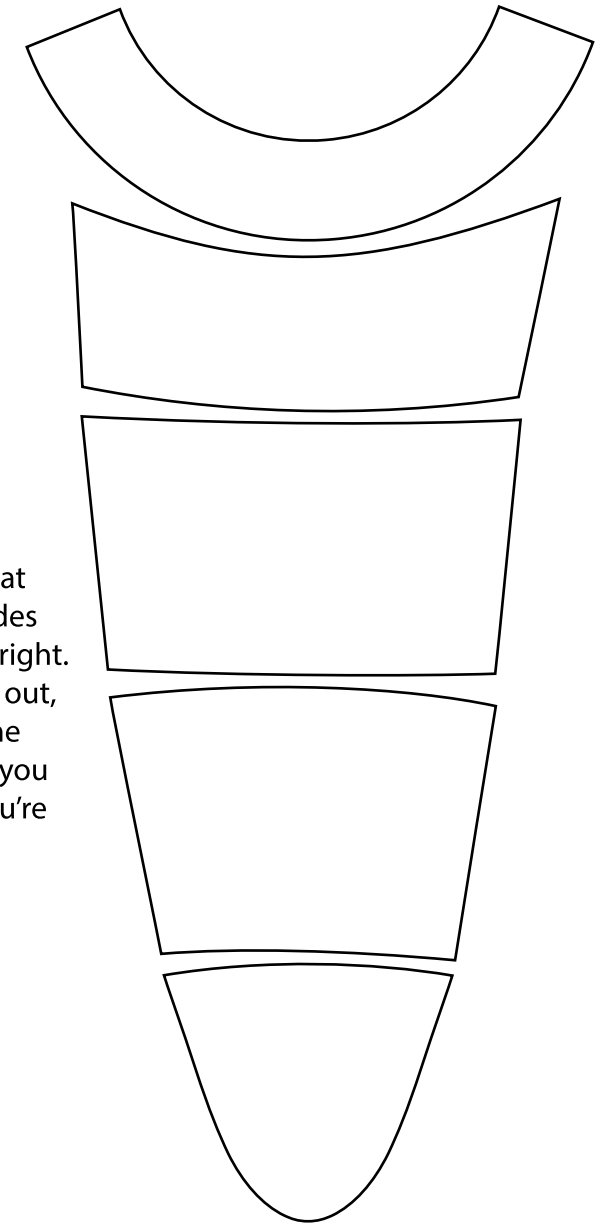


Bottom Exhaust
of Cowling.

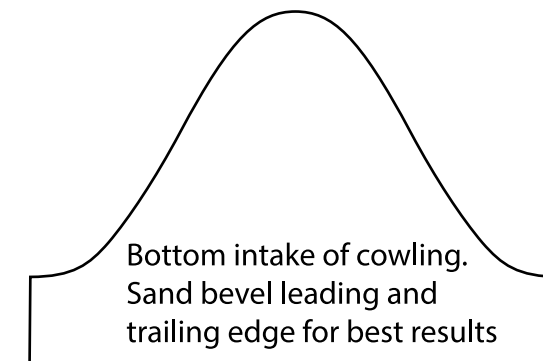
From the cockpits perspective
Left side



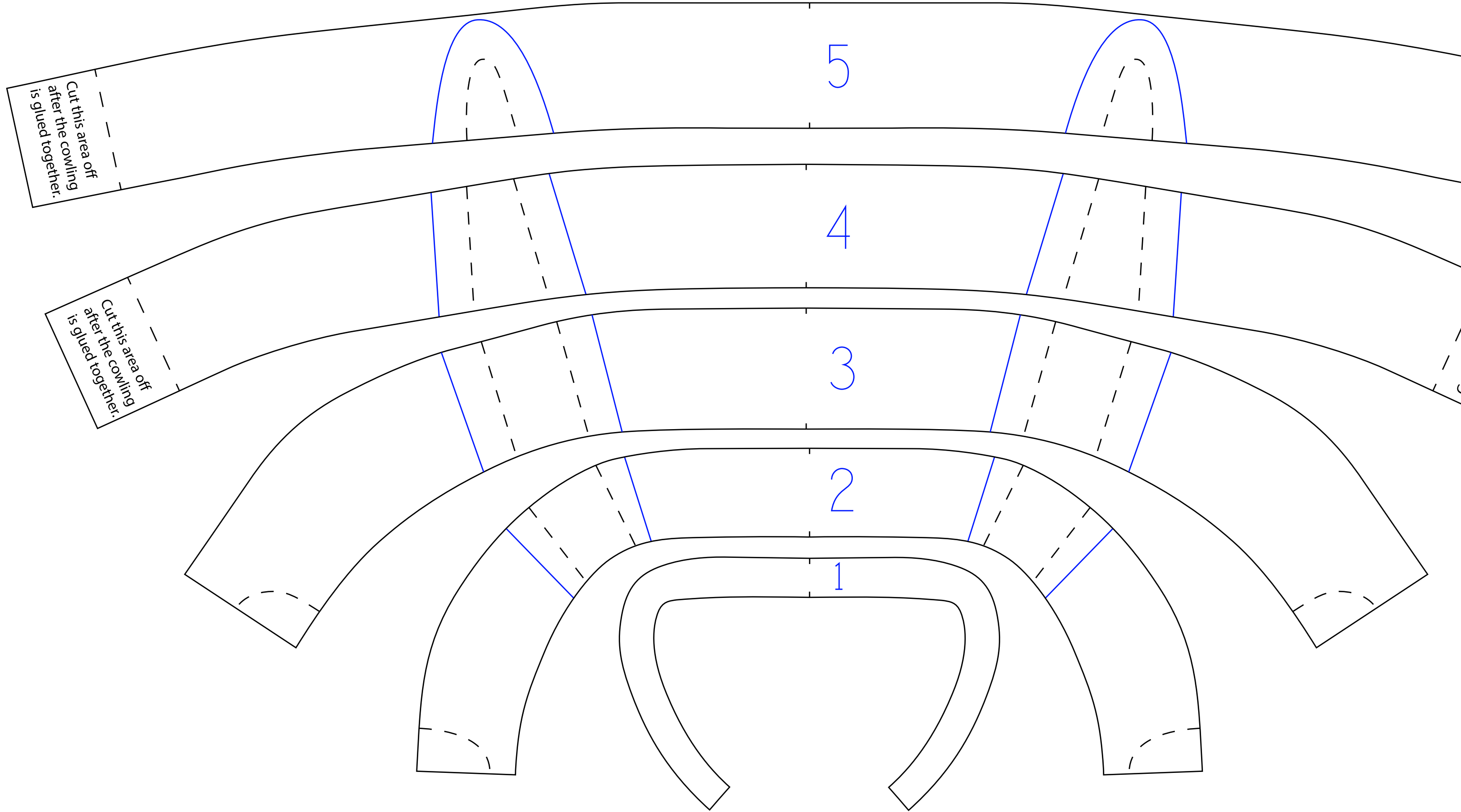
From the cockpits perspective
Right side



With these two side intakes, know that they are slightly different on each side which is why I labeled them left and right. However, when you cut these pieces out, these pieces get glued together in the orientation they are here. As long as you look at reference photos and take your time they will turn out beautiful.



Bottom intake of cowling.
Sand bevel leading and
trailing edge for best results



Cut this area off
after the cowling
is glued together.

Cut this area off
after the cowling
is glued together.

5

4

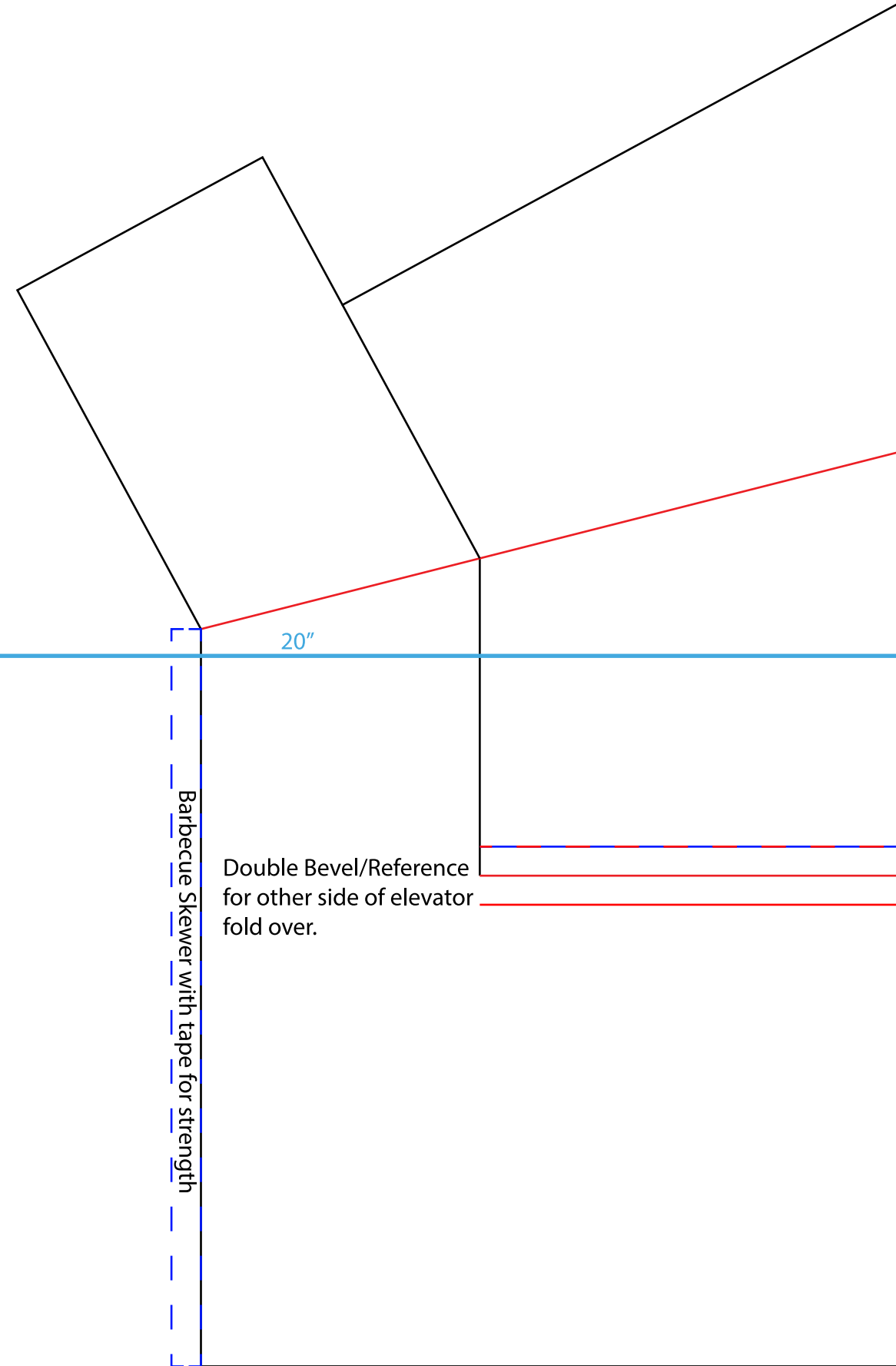
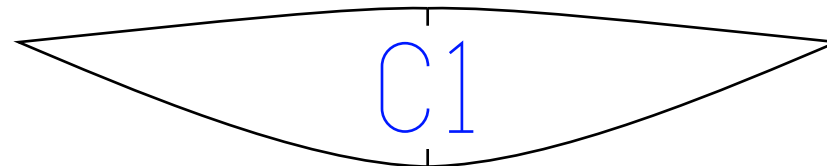
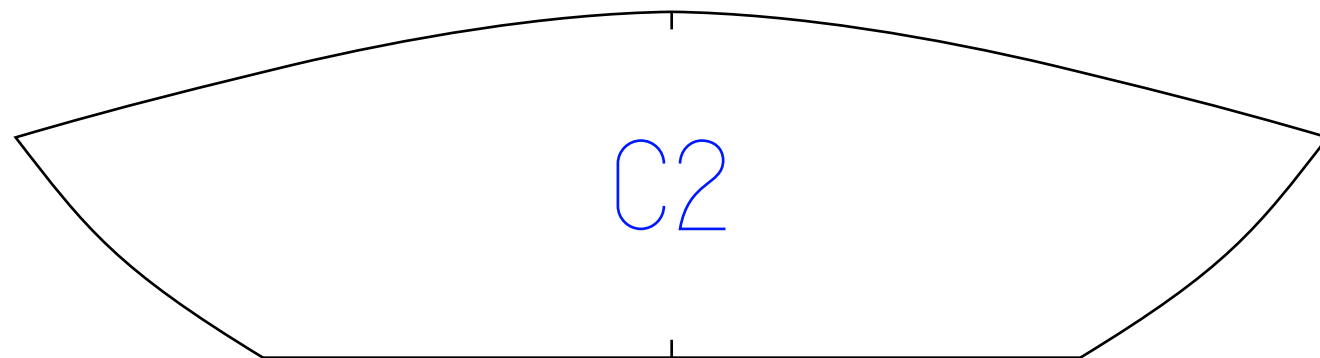
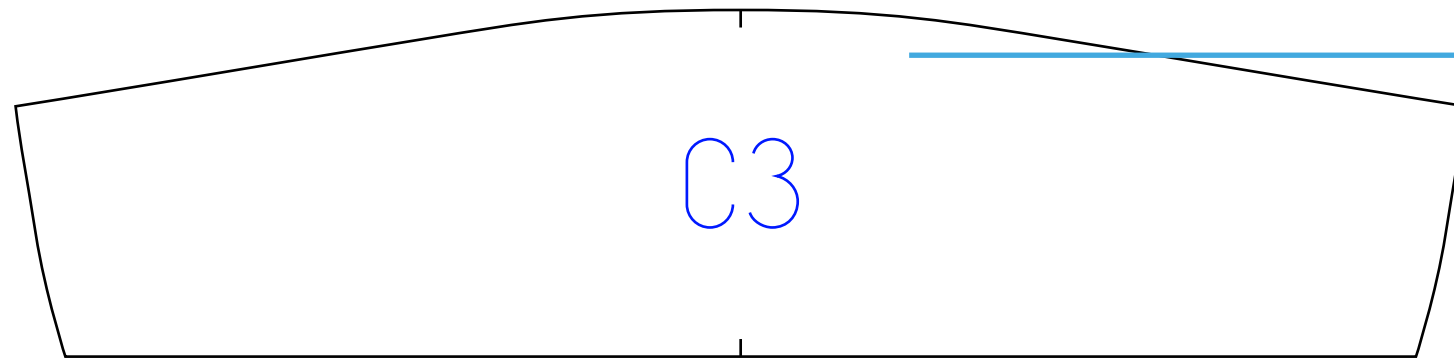
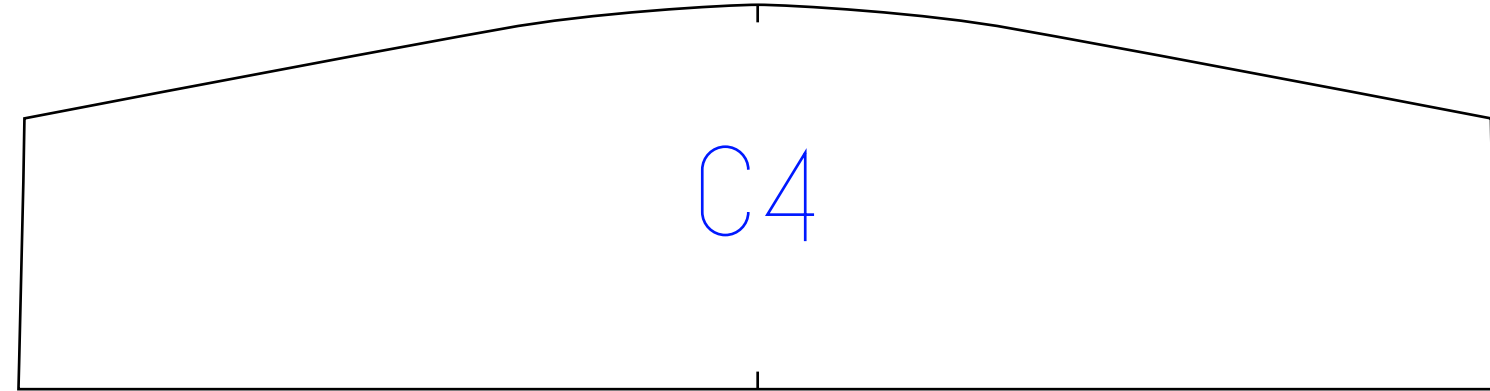
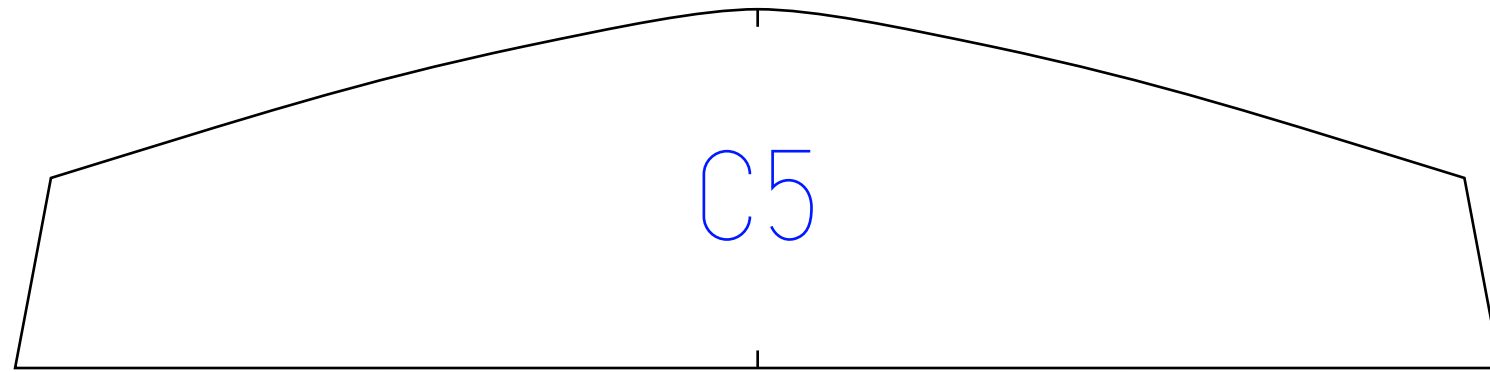
3

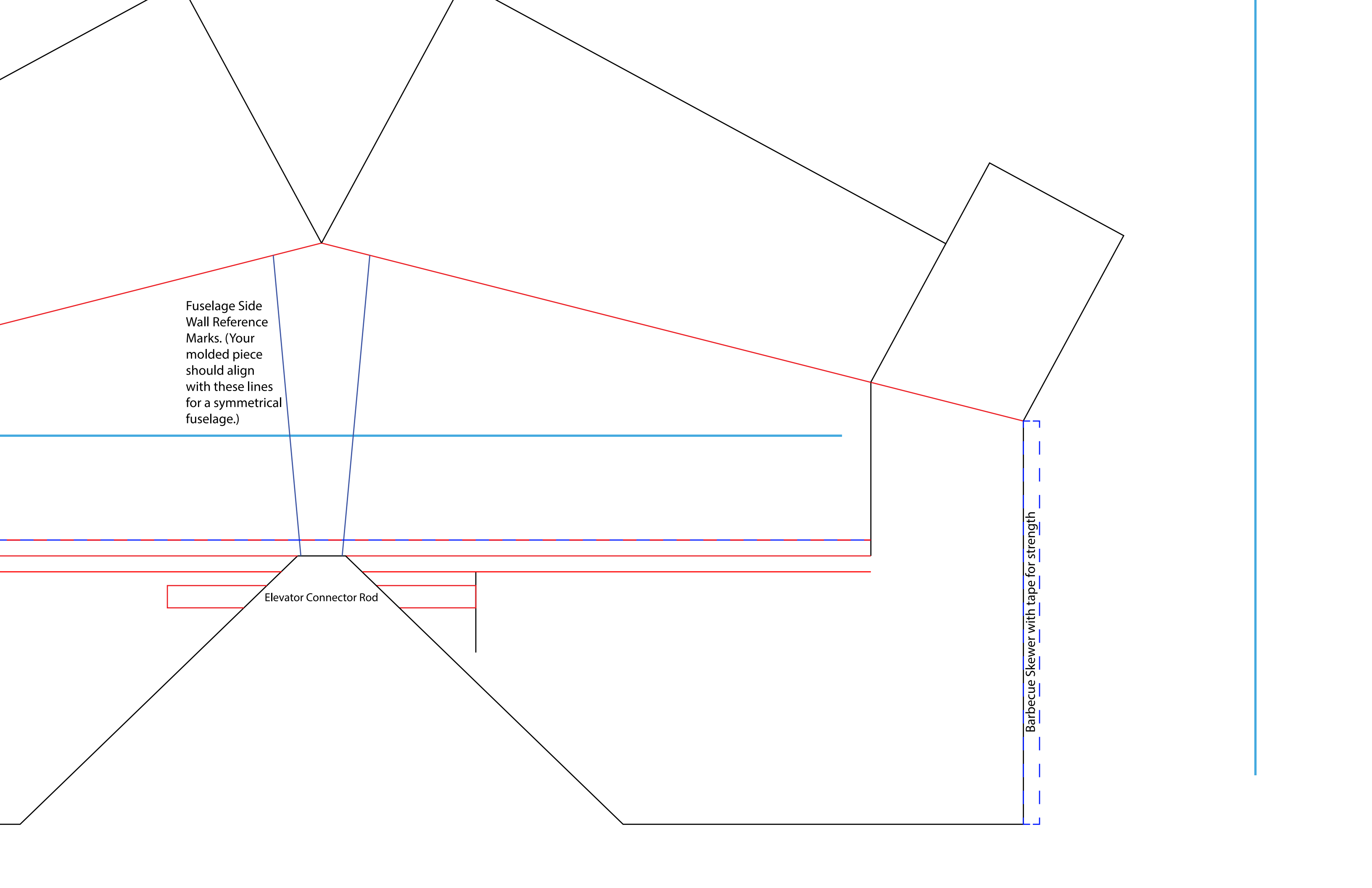
2

1

Cut this area off
after the cowling
is glued together.

Cut this area off
after the cowling
is glued together.





Fuselage Side Wall Reference Marks. (Your molded piece should align with these lines for a symmetrical fuselage.)

Elevator Connector Rod

Barbecue Skewer with tape for strength

Side Force Generators

