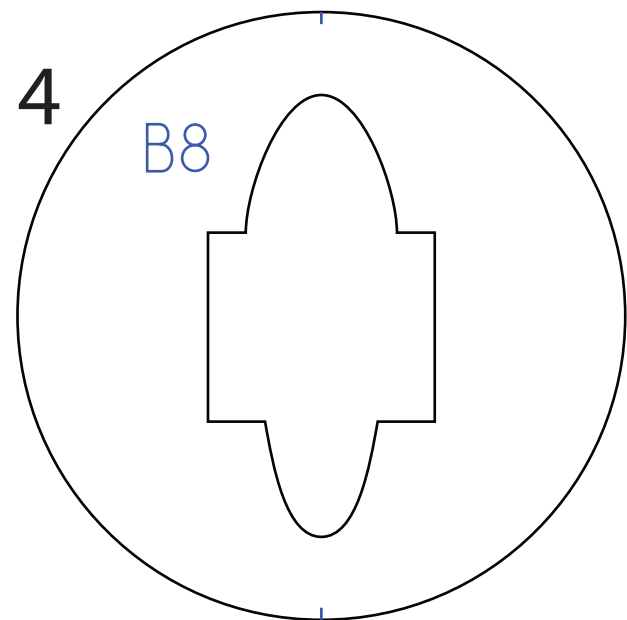
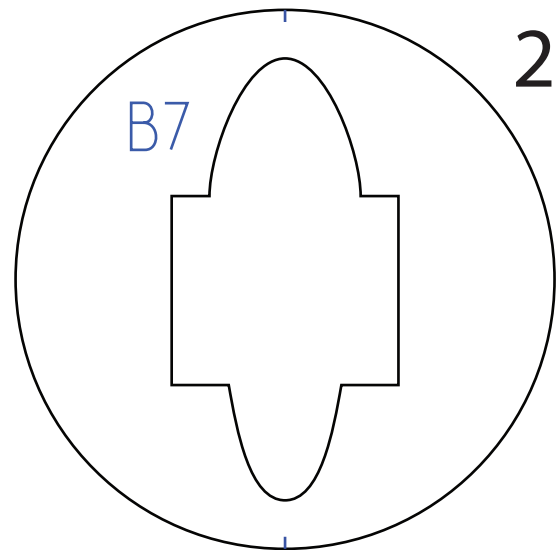
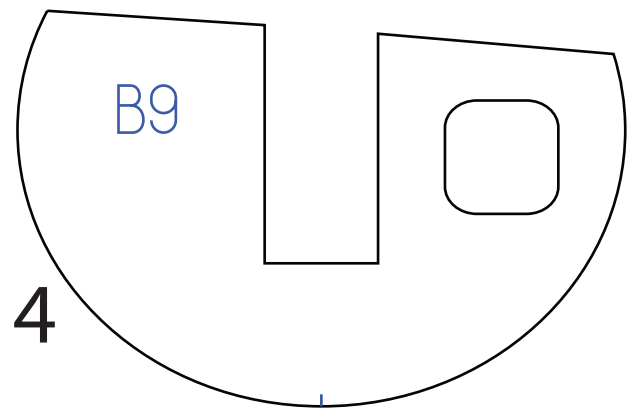
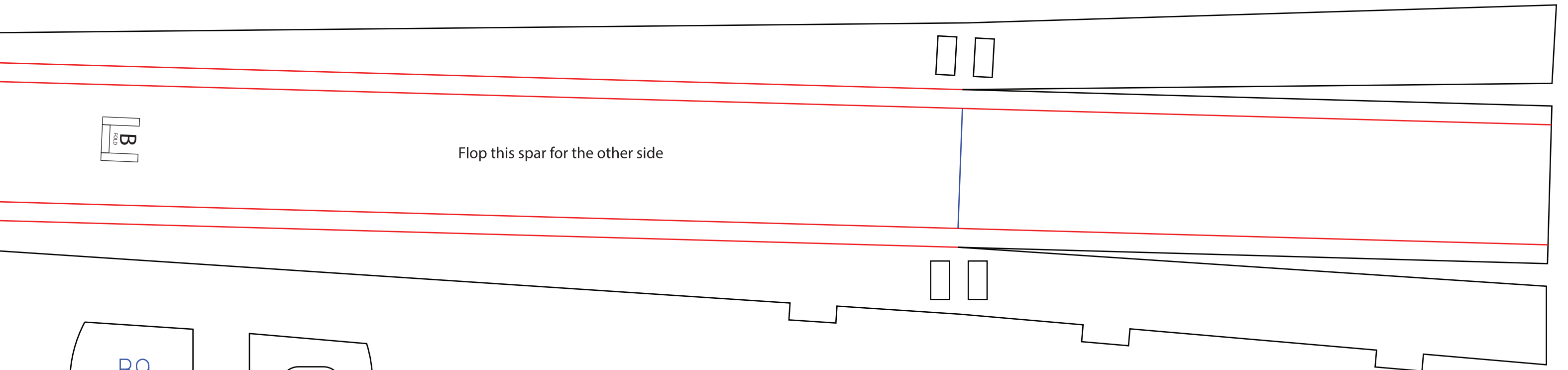


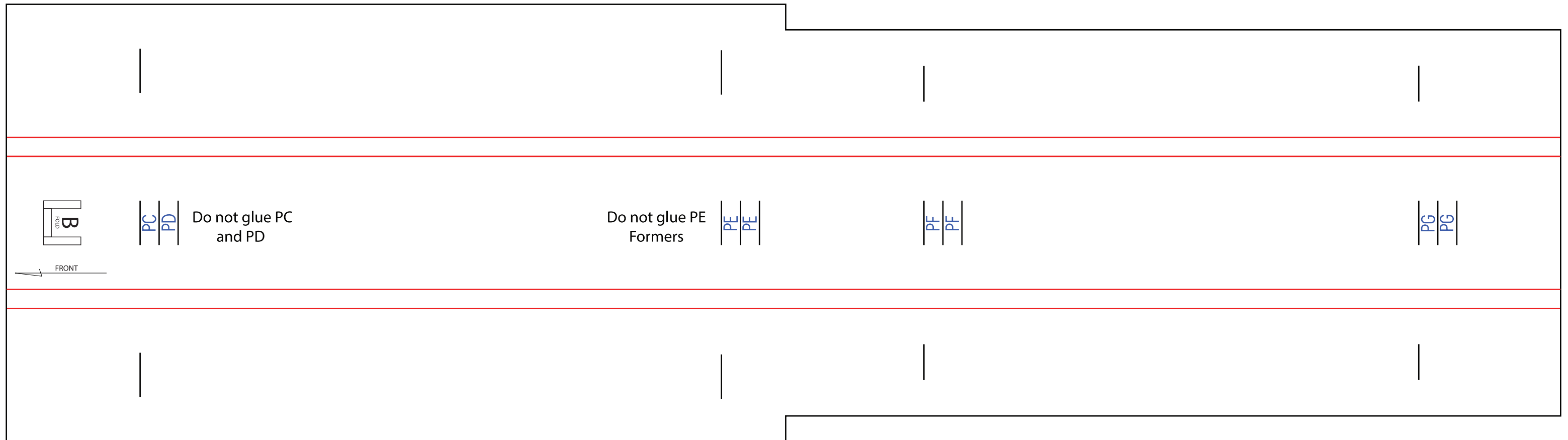
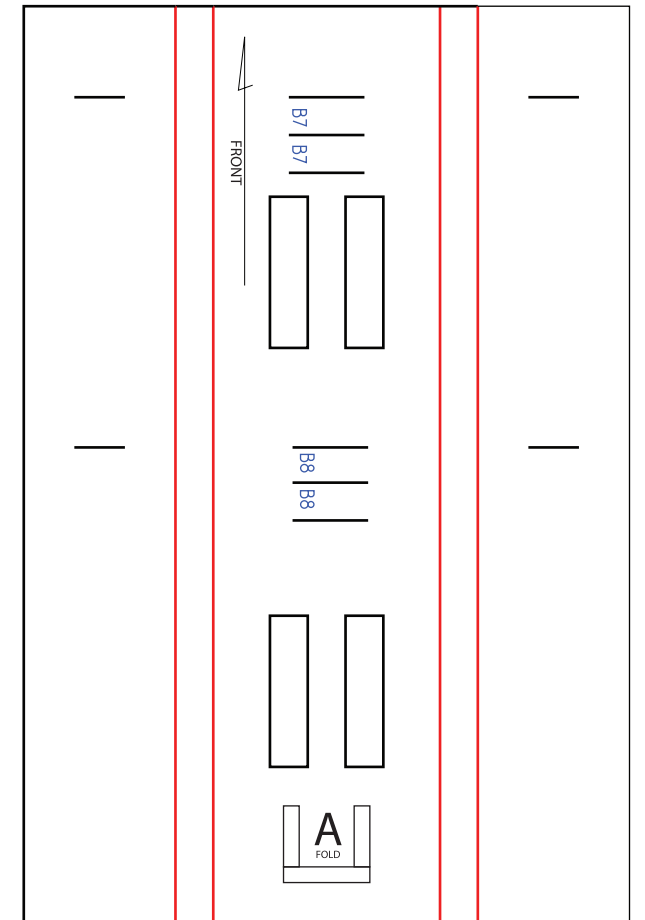
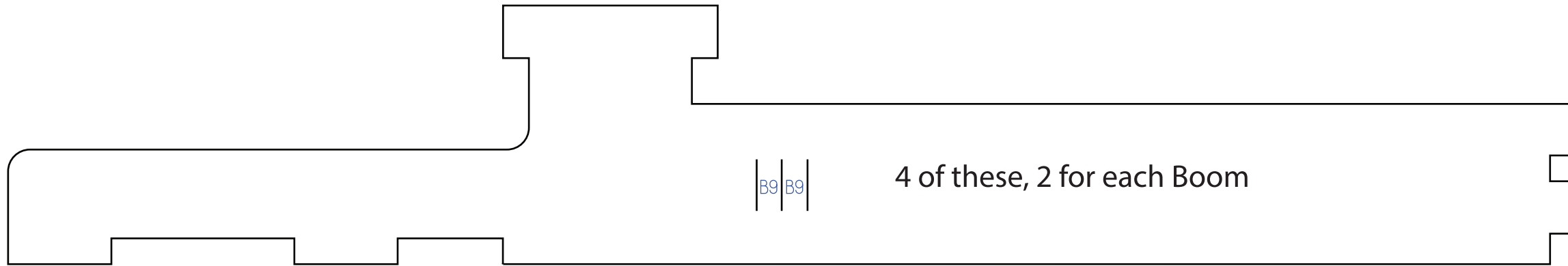
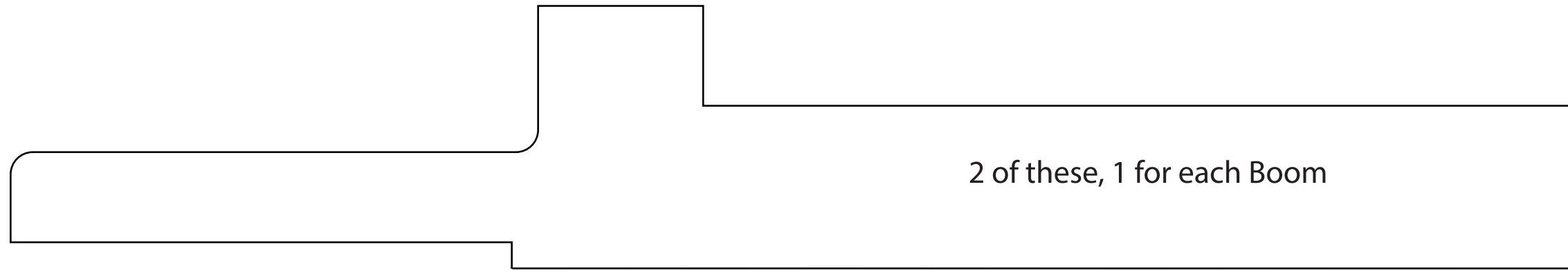
20 inches

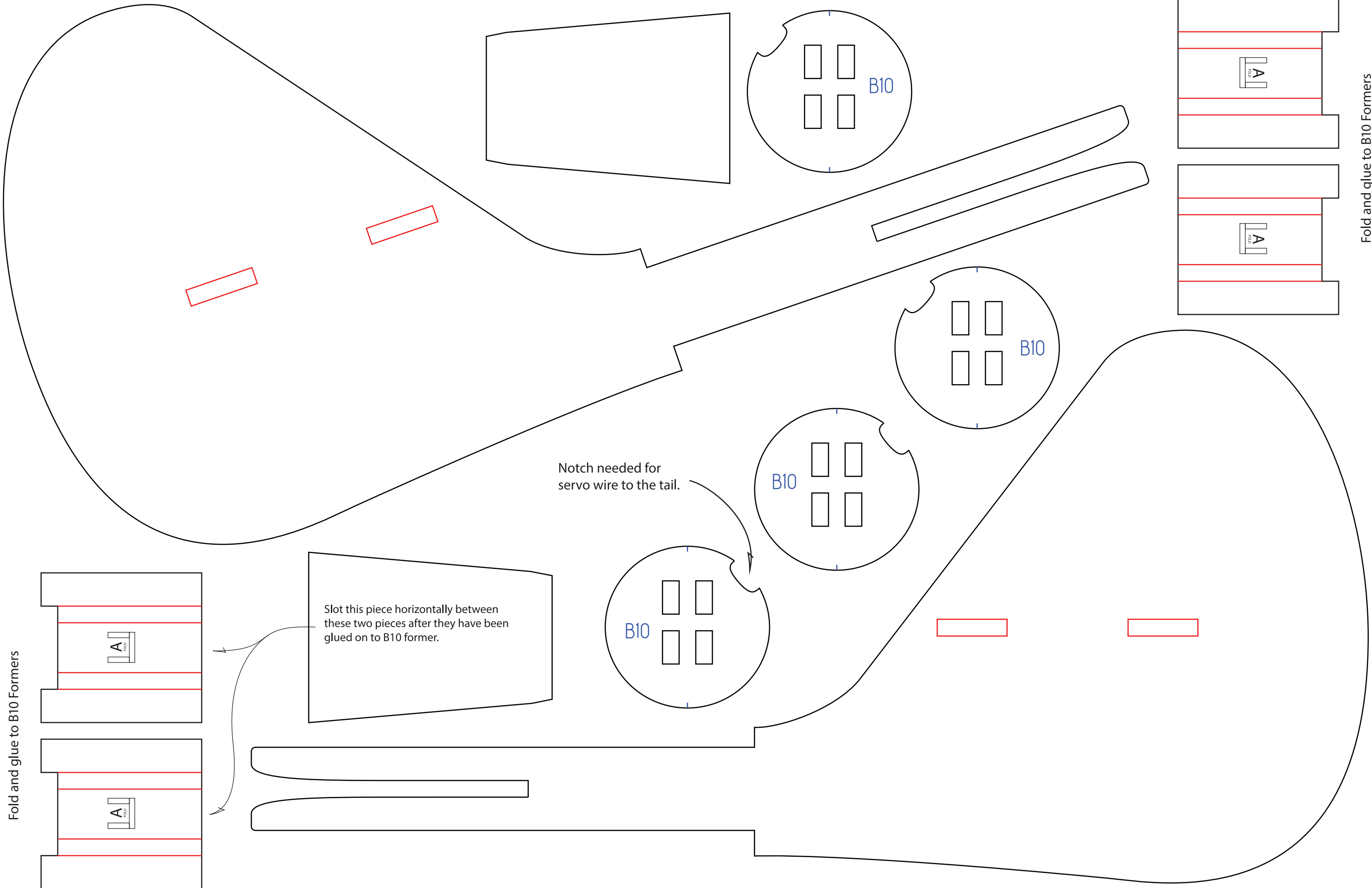
Flop this wing pattern for the other side.

21 inches



Copyright ©2020 13thSquadron. All Rights Reserved.  
Commercial use of our plans are prohibited.





Fold and glue to B10 Formers

Fold and glue to B10 Formers

Notch needed for servo wire to the tail.

Slot this piece horizontally between these two pieces after they have been glued on to B10 former.

B10

B10

B10

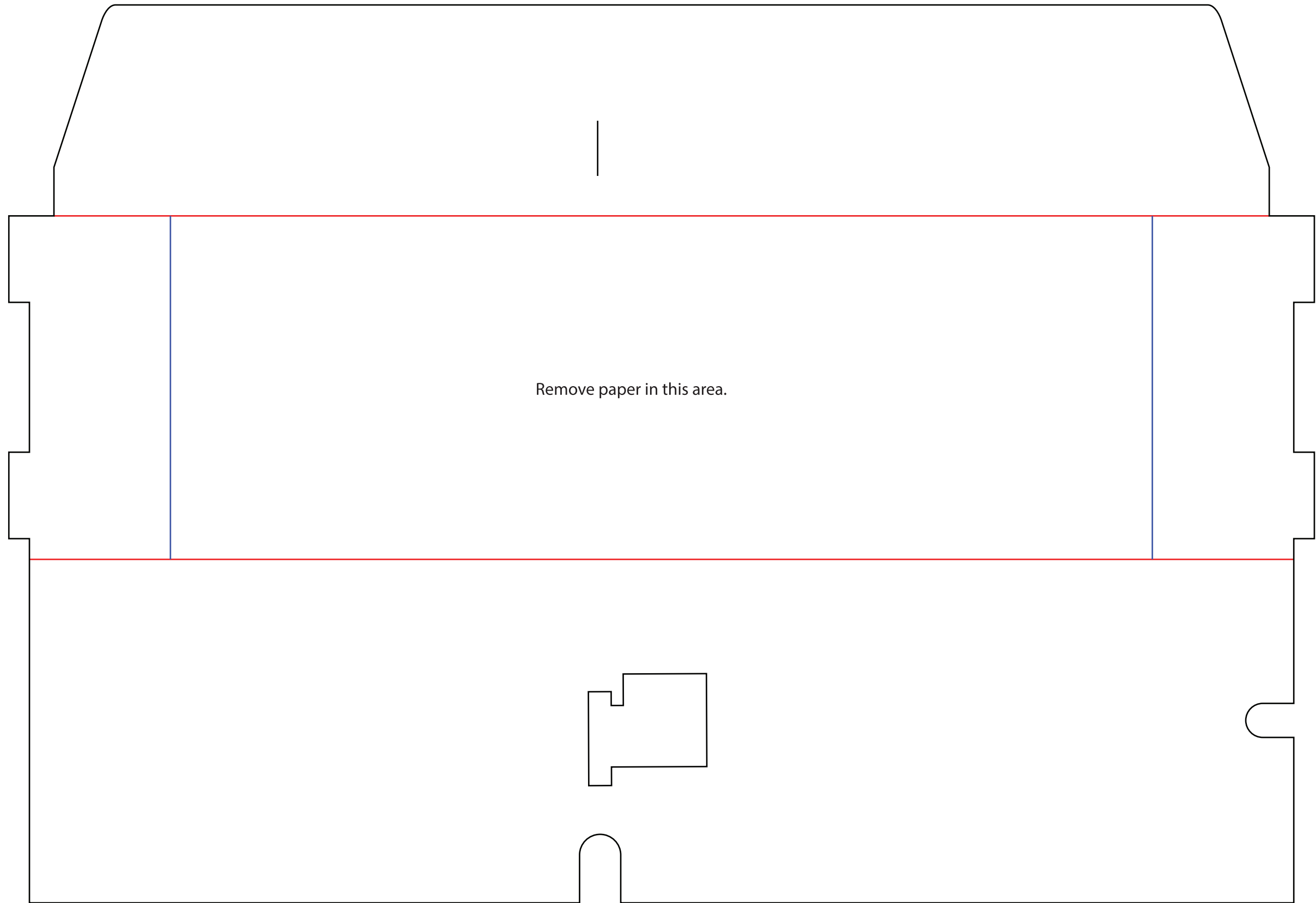
B10

A FOLD

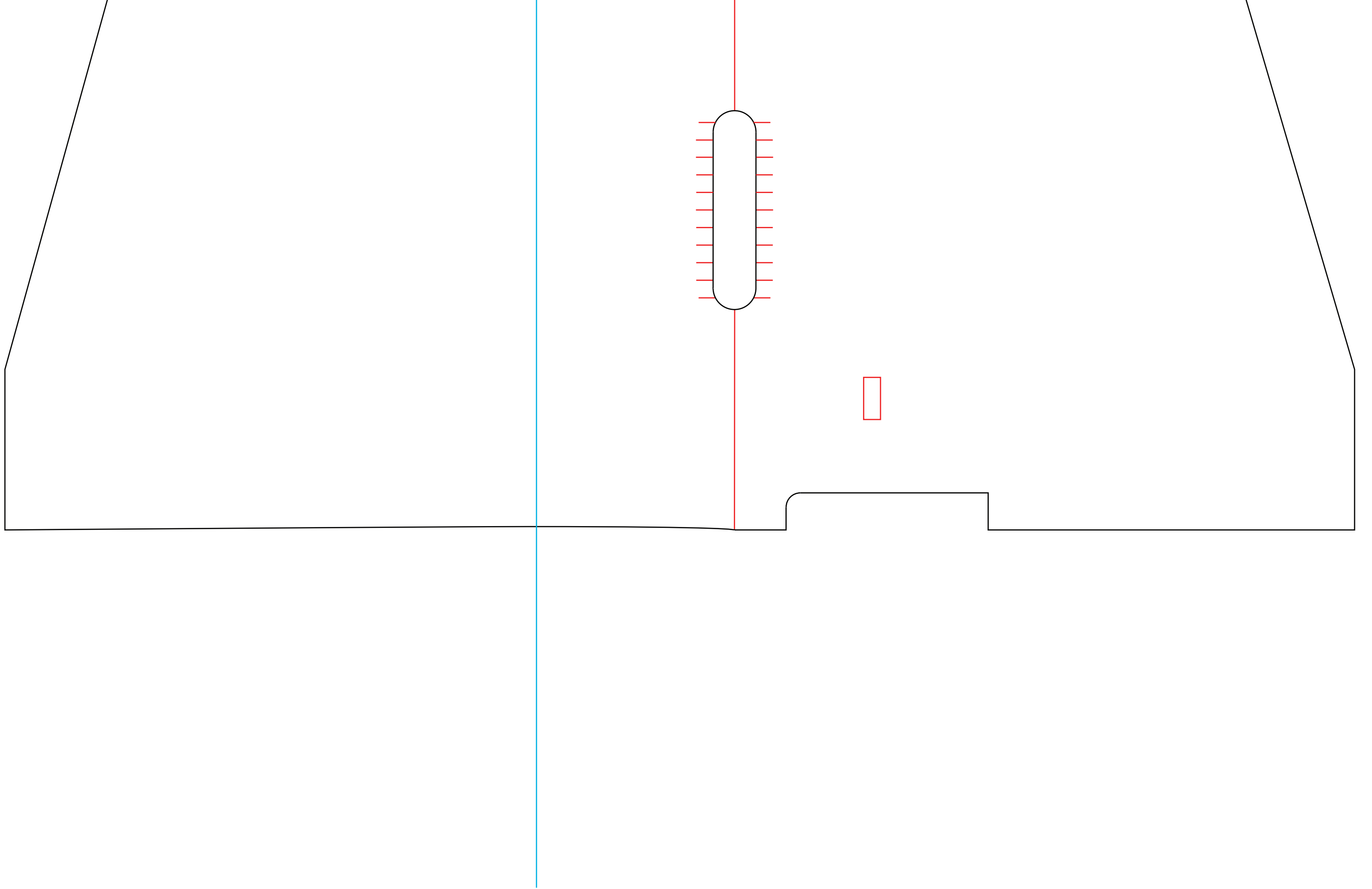
A FOLD

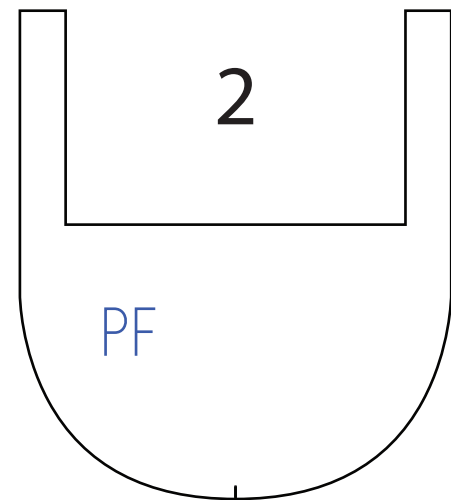
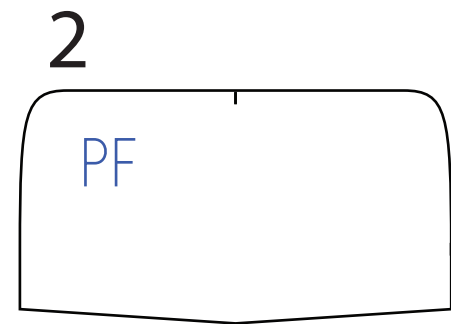
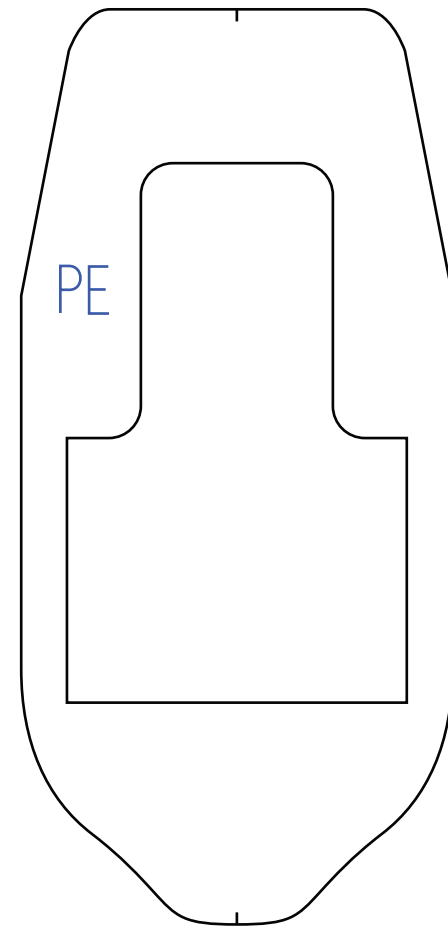
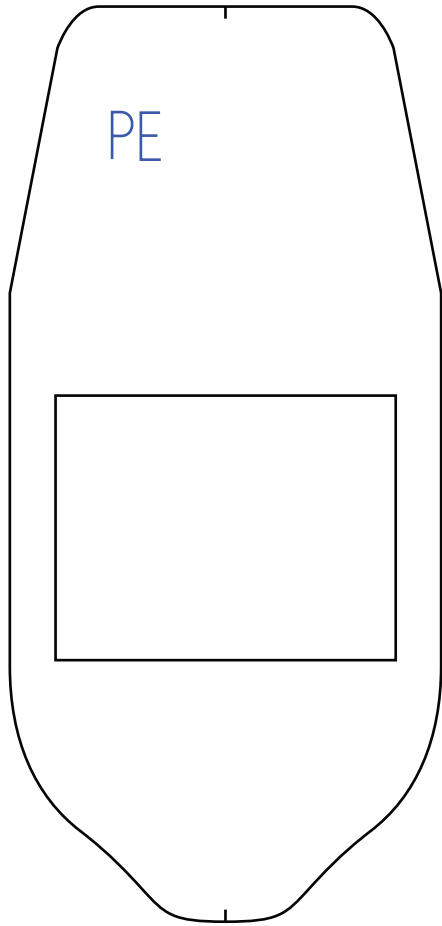
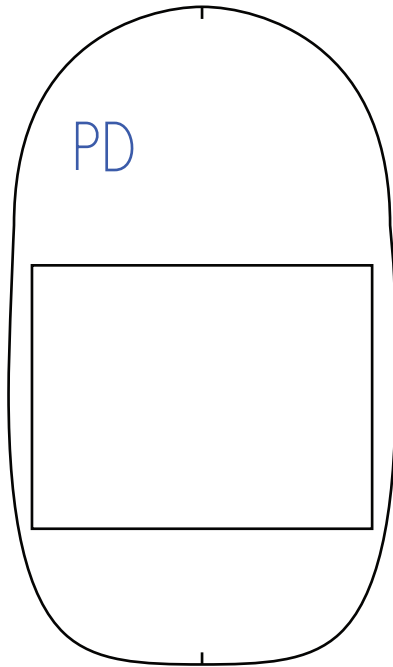
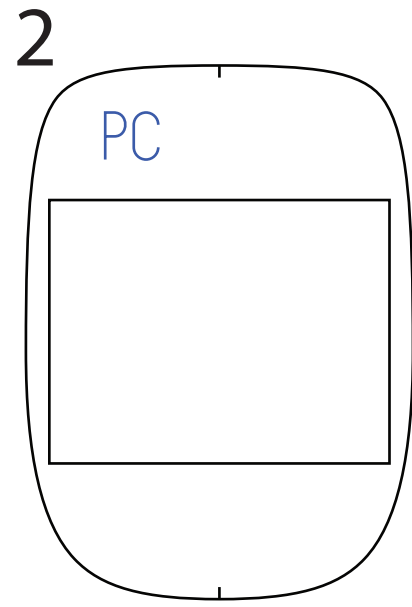
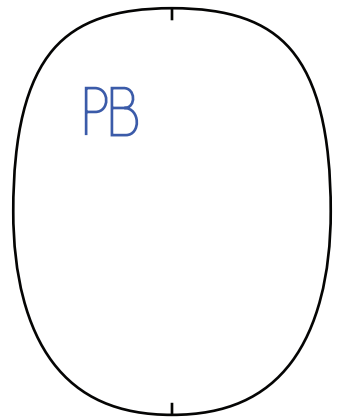
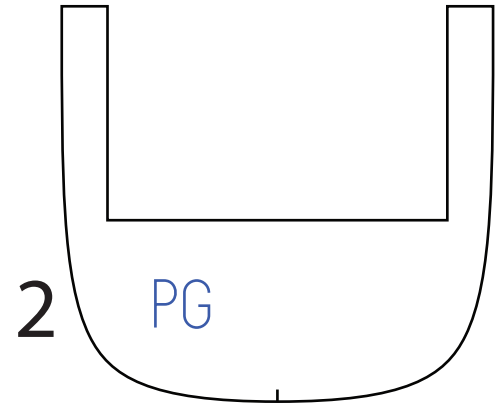
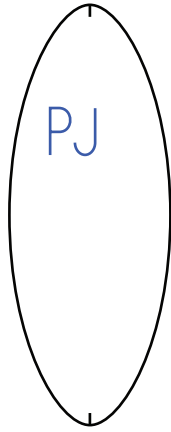
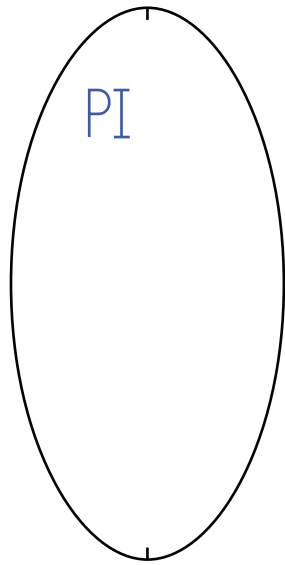
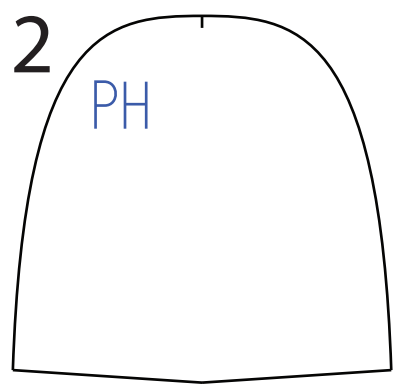
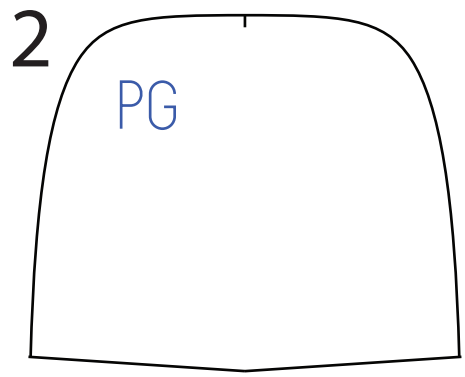
A FOLD

A FOLD

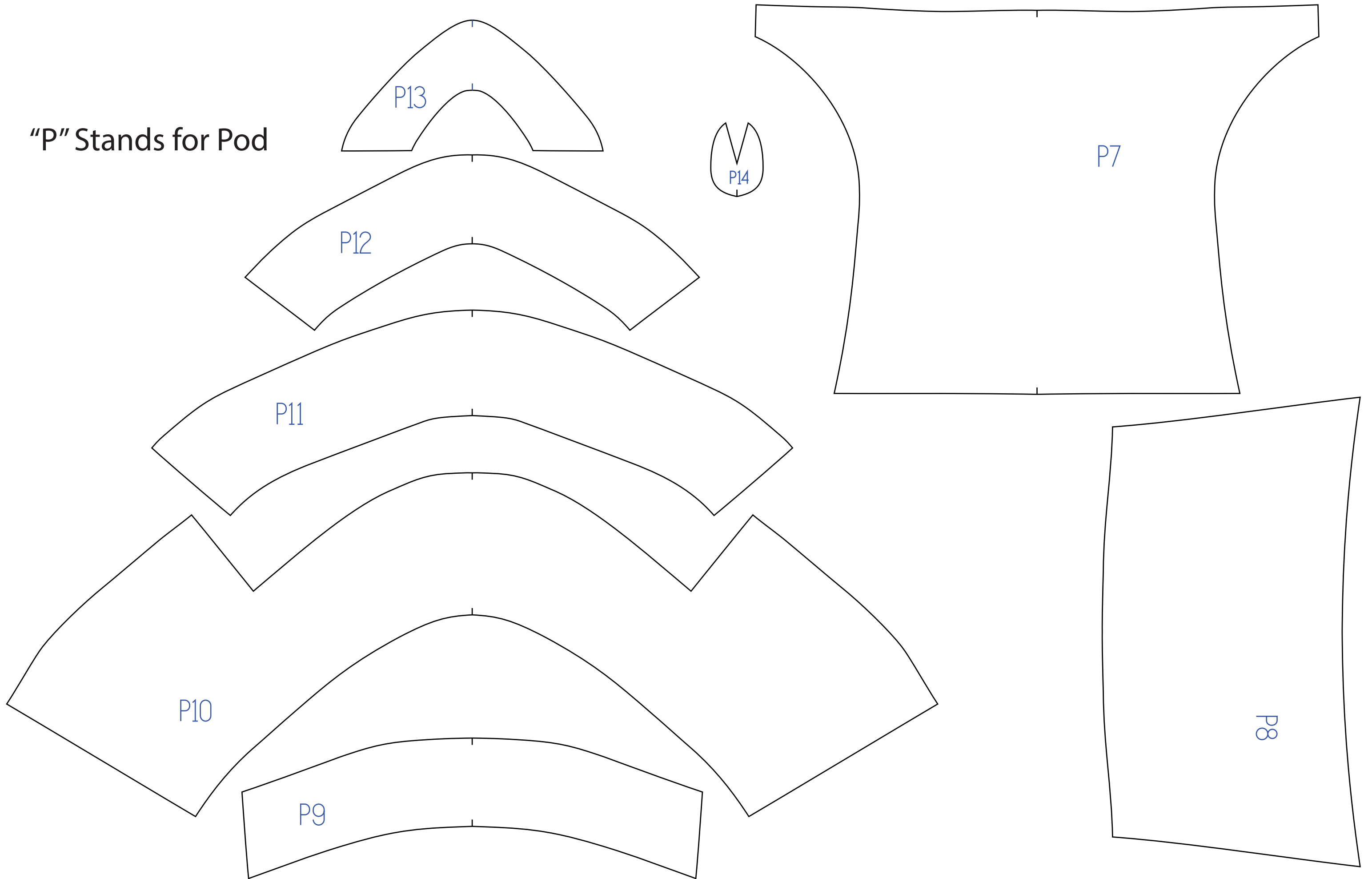


Remove paper in this area.

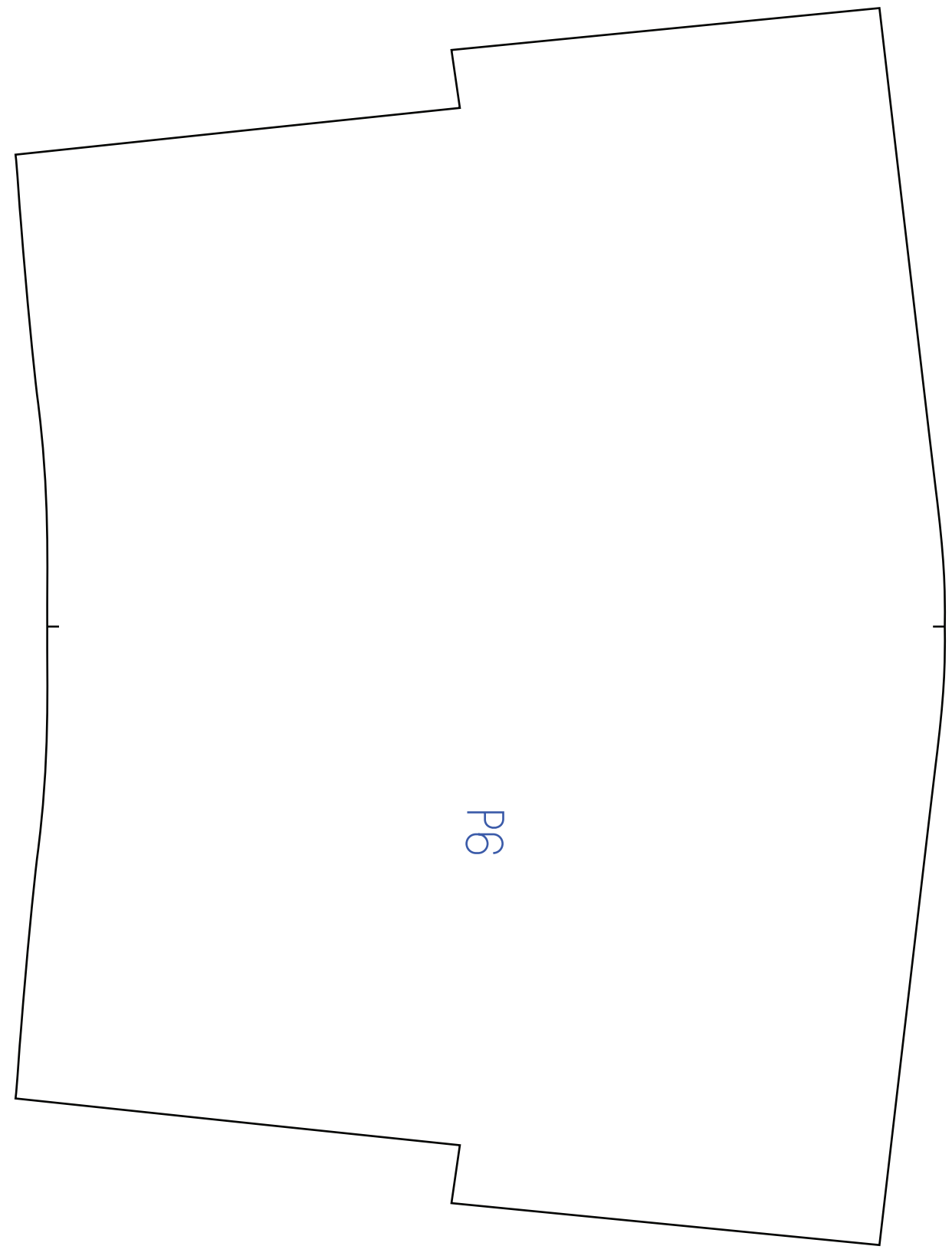
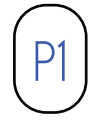
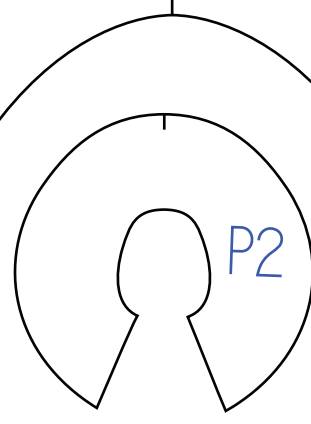
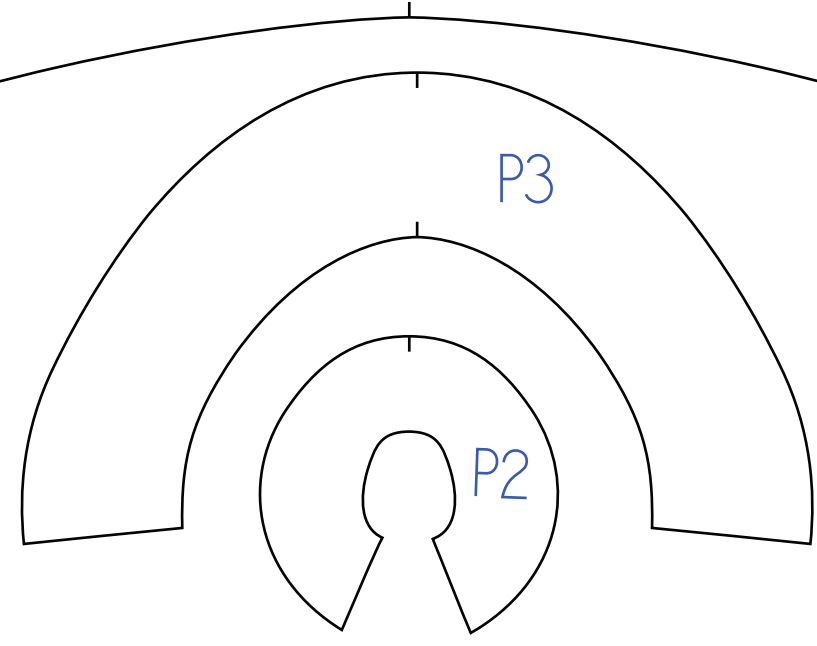
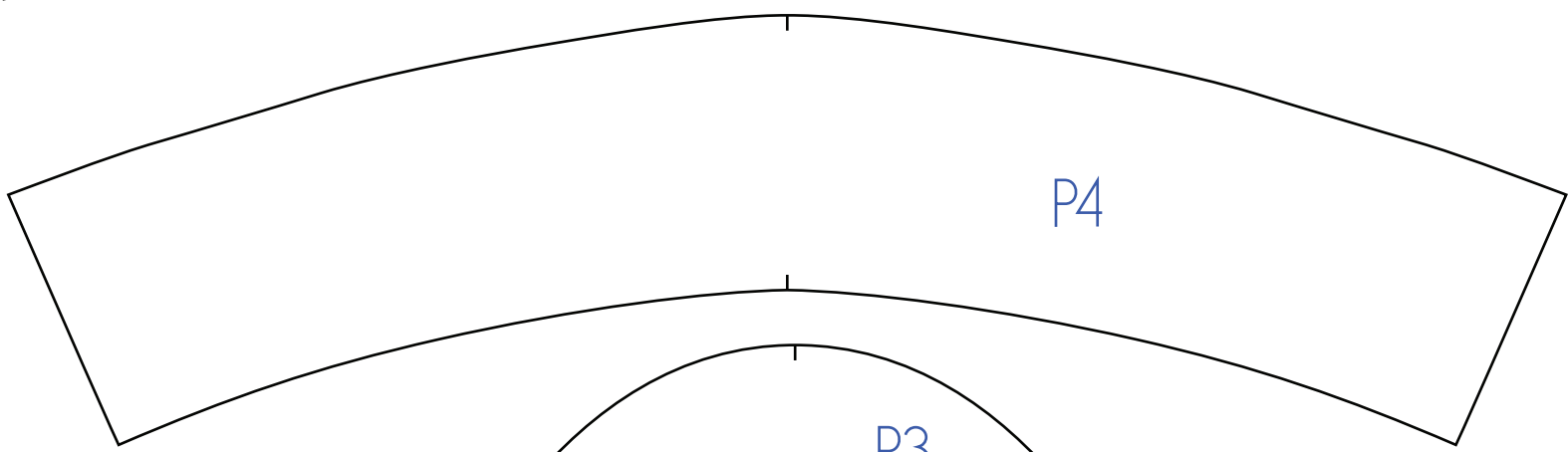
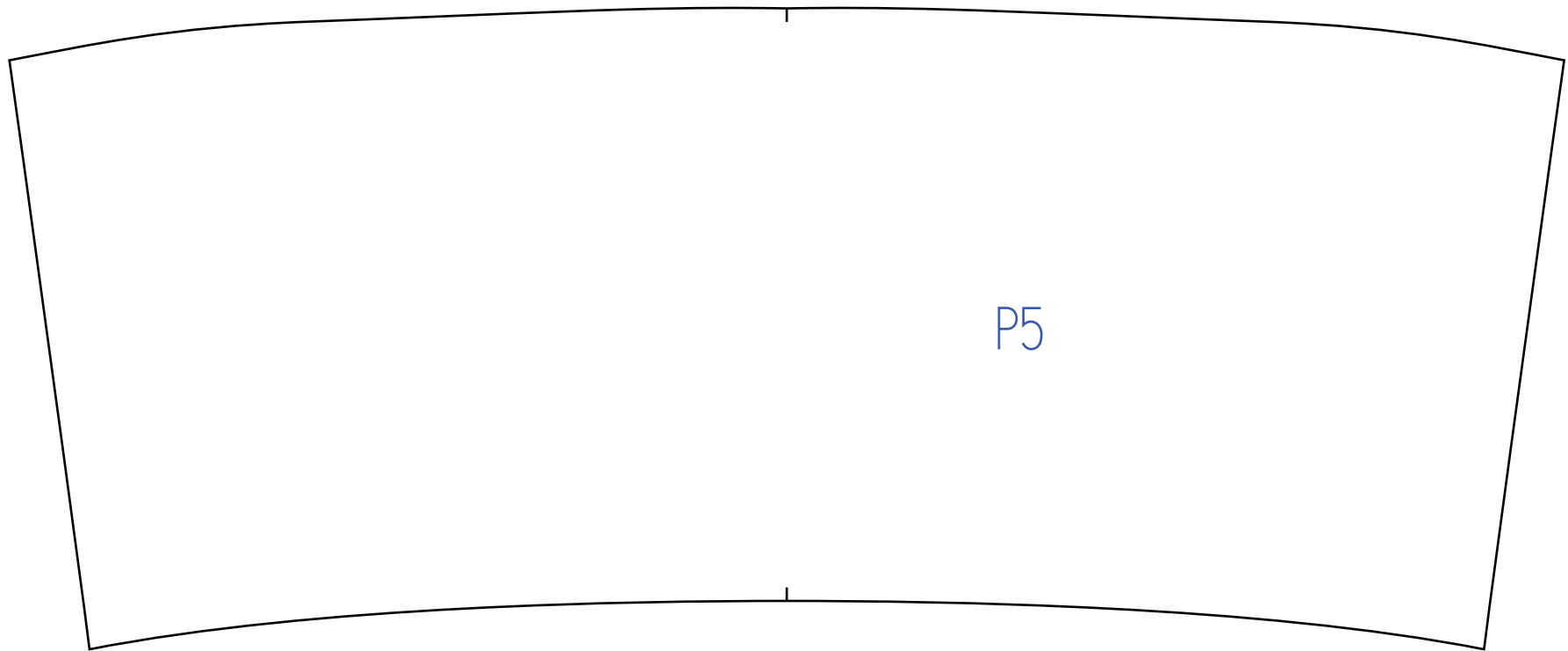




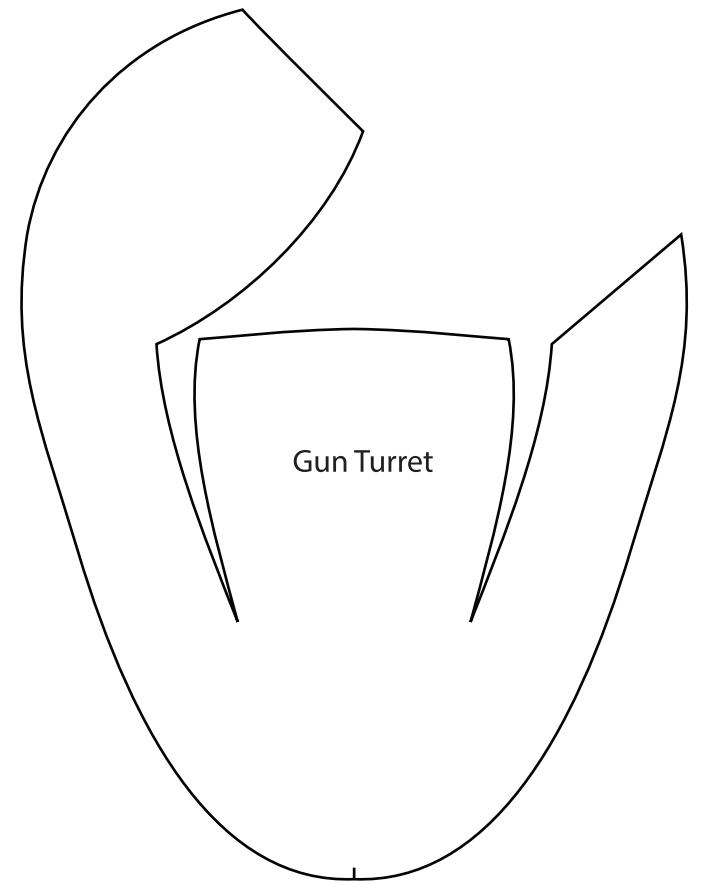
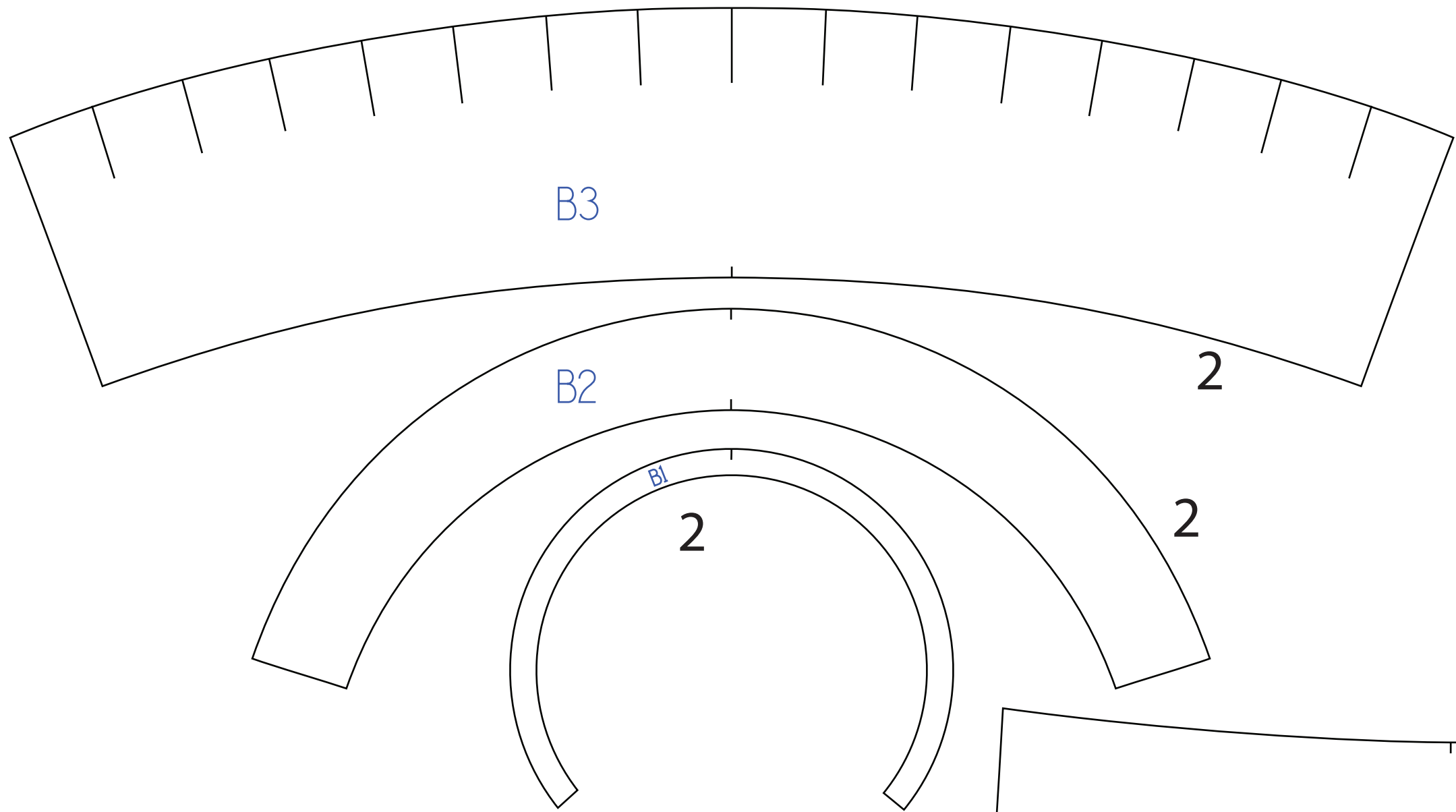
“P” Stands for Pod



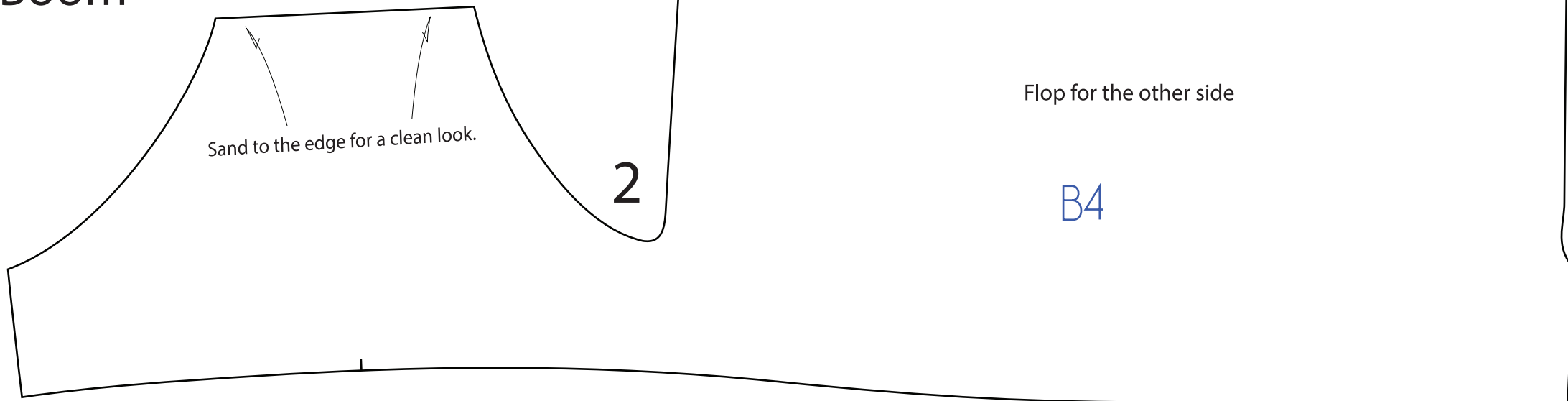


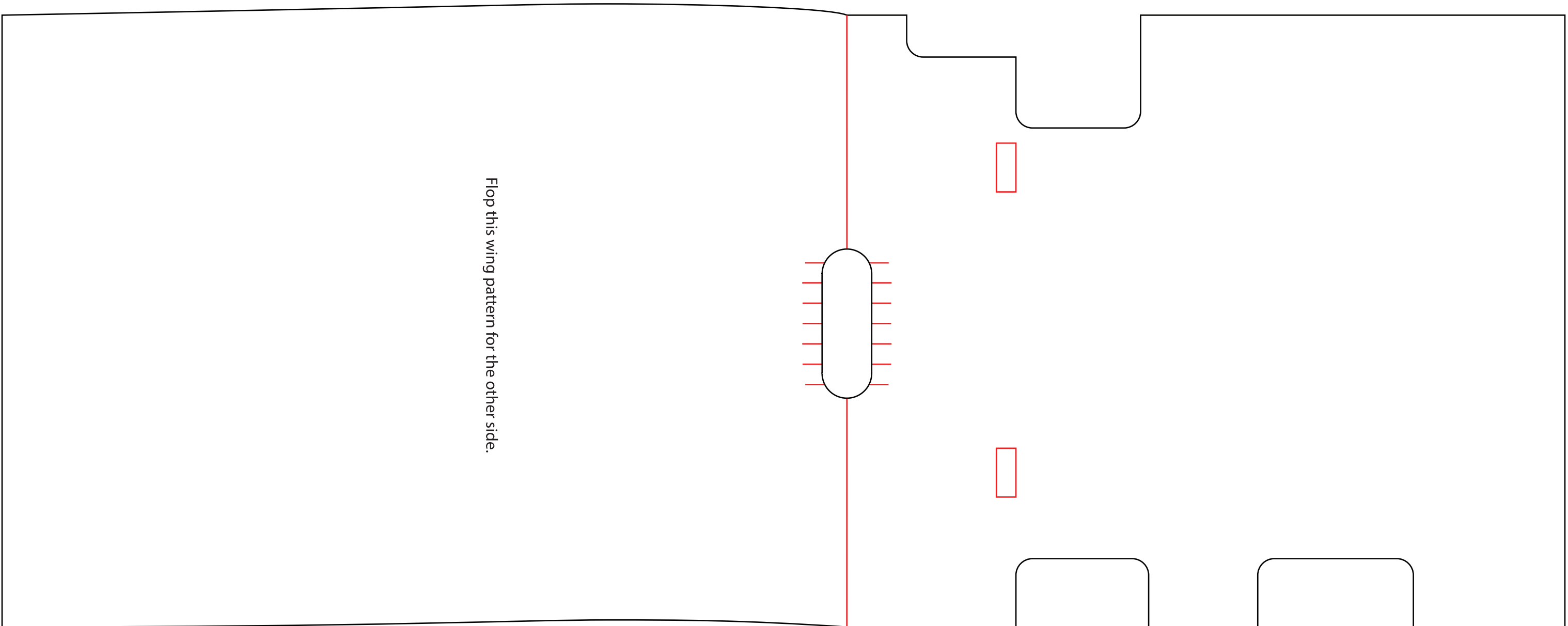


"P" Stands for Pod

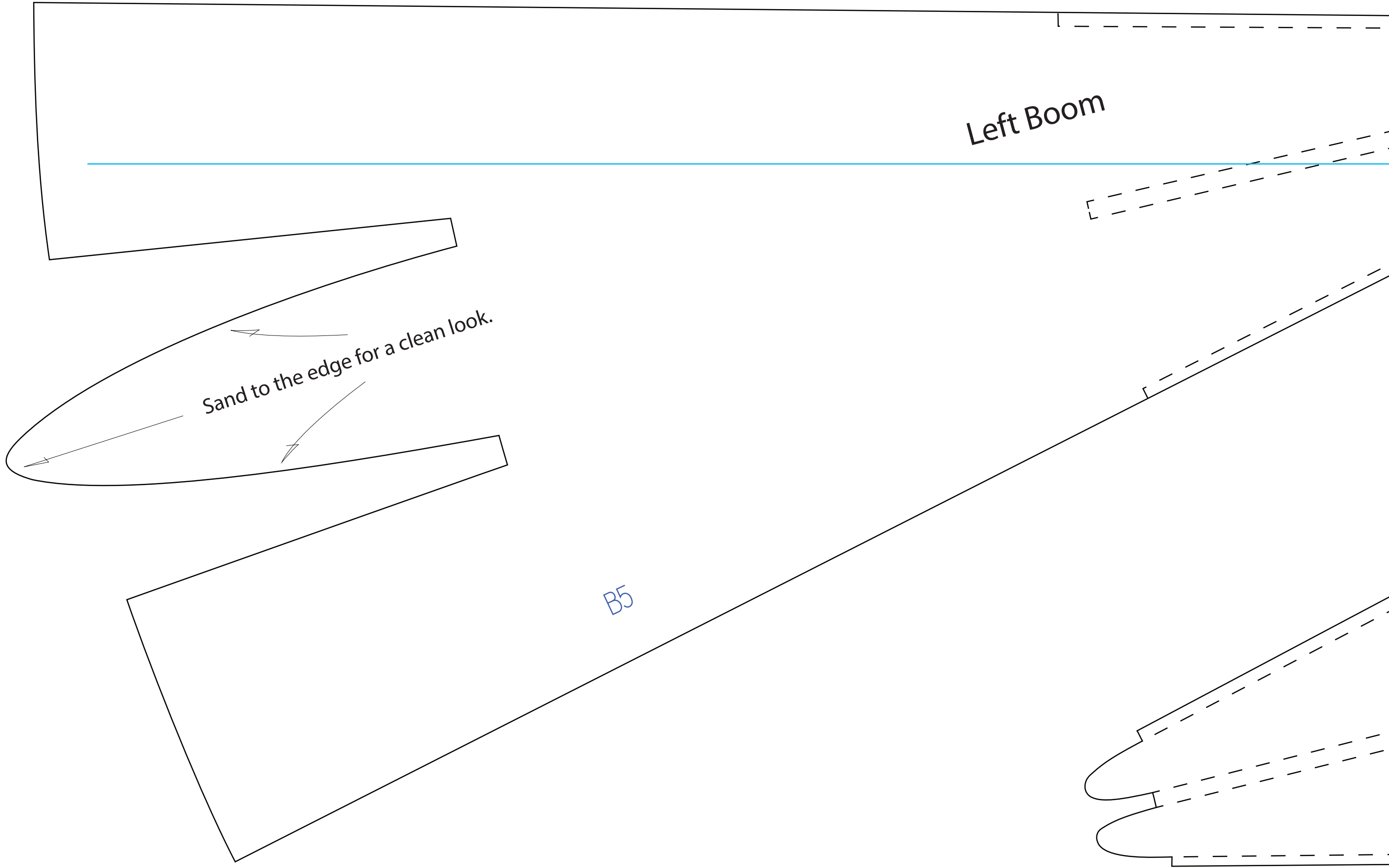


"B" Stands for Boom





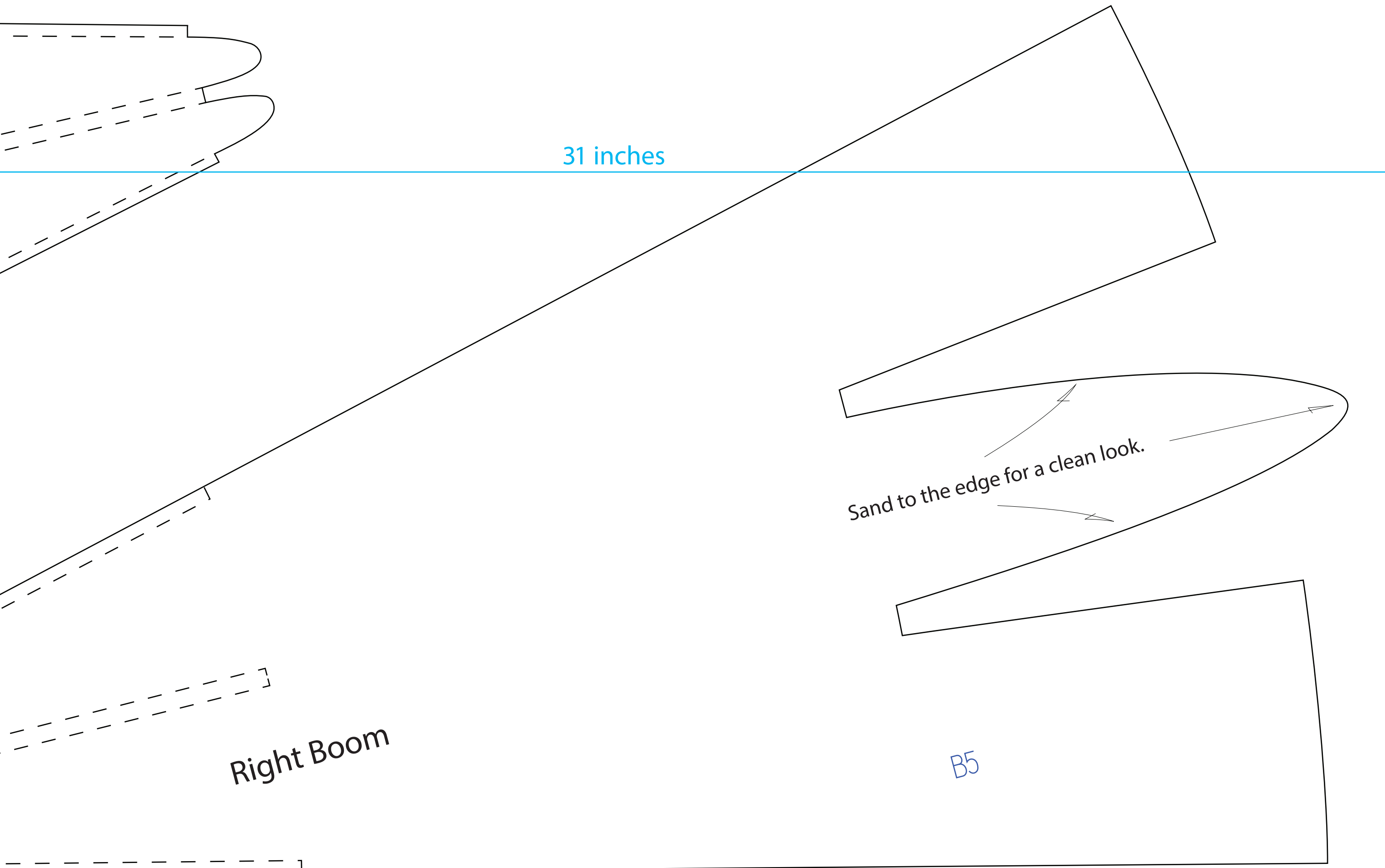
Flop this wing pattern for the other side.



Left Boom

Sand to the edge for a clean look.

B5



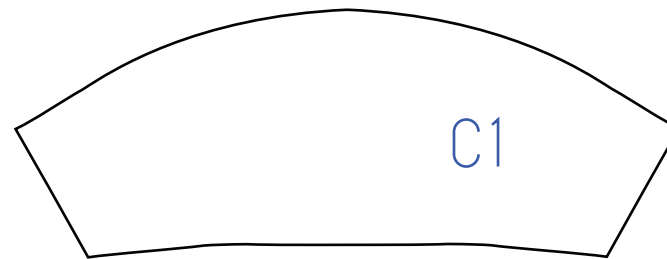
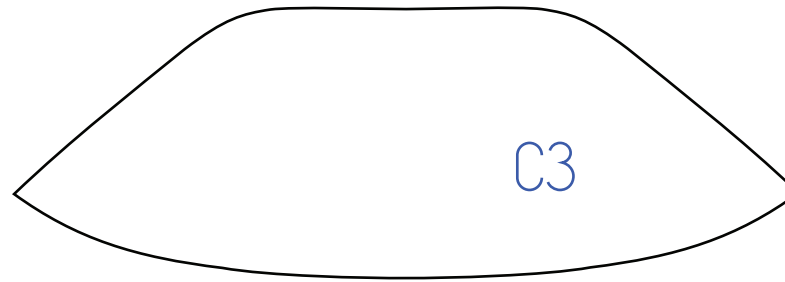
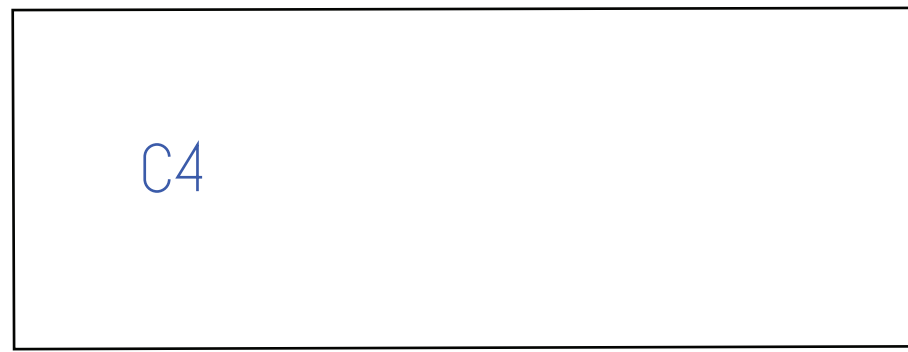
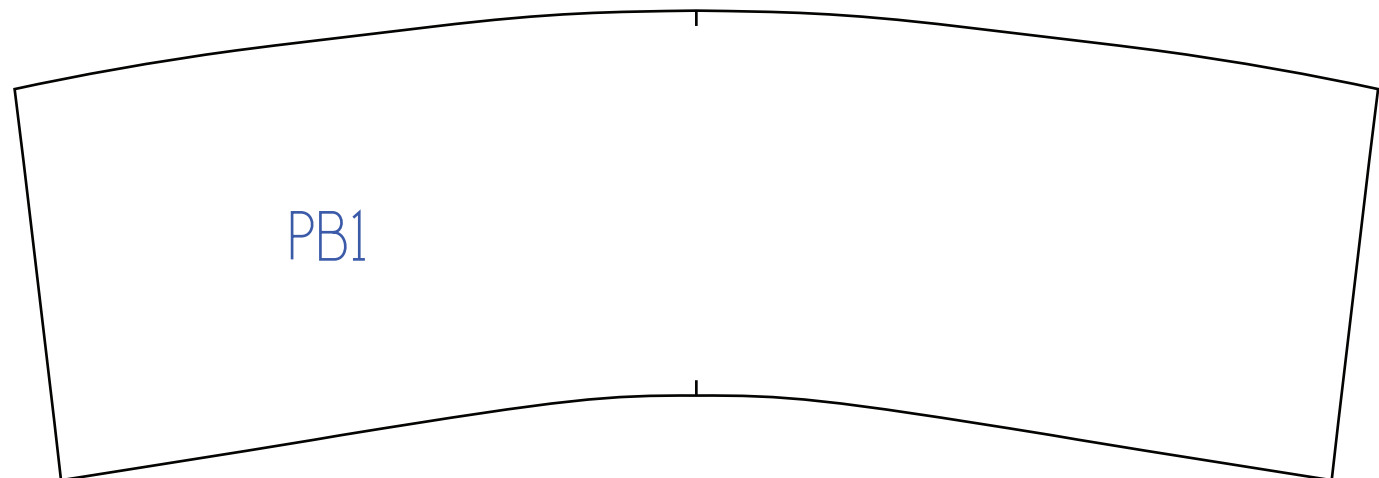
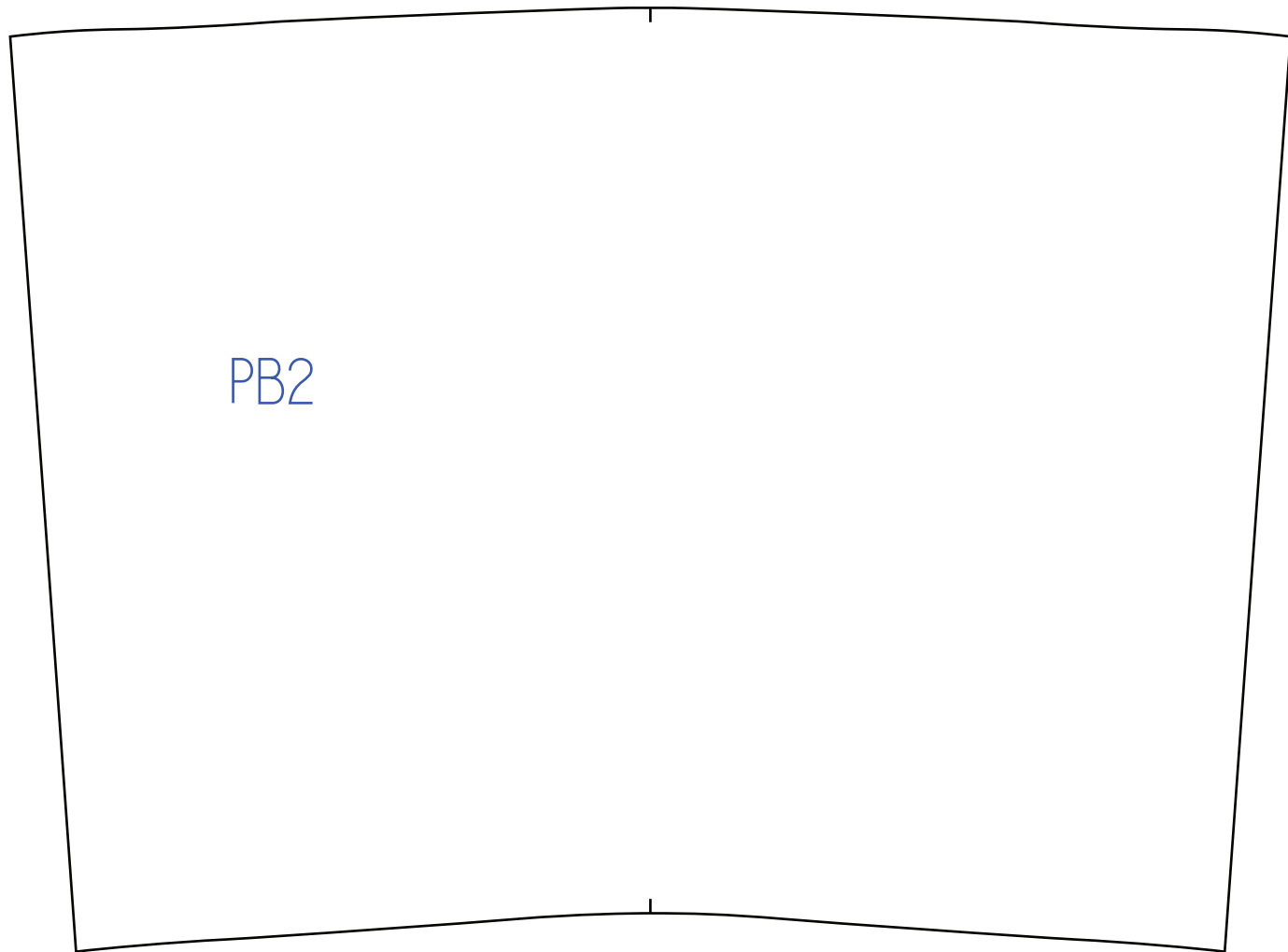
31 inches

Right Boom

B5

Sand to the edge for a clean look.

"P" Stands for Pod



"C" Stands for Cockpit

